



**THE
BURGESS HILL
ACADEMY**

Year 11

Your Choices

2024-2025

BELIEVE IN YOUR BEST

September 2024

Dear Student

Your Choices ~ 2024-25

As from September 2014, the law has changed so that all young people will be required to continue in education or training until their 18th birthday. This does not necessarily mean staying in school; young people will have a choice about how they continue in education or training post-16 which could be through:

- Full-time study in school, college or with a training provider;
- Full-time work or volunteering combined with part-time education or training;
- An apprenticeship or traineeship

This booklet provides you with information to help when choosing the most suitable path after leaving The Academy.

“Moving On” meetings will be arranged during the Autumn and Spring terms with our Independent Careers Advisor, Carl Jackson from Elev8Careers. At this meeting, Carl will look at the further education courses and if applicable, apprenticeship options that would best suit you.

All local Sixth Form and vocational colleges will be coming into the Academy as part of the assembly programme to talk about their colleges. They also have Open Evenings throughout the Autumn term, it is strongly recommended that you attend as many as possible to help you make appropriate decisions. Links to all the local colleges can be found on the TBHA website under [Careers and Work Placement - The Burgess Hill Academy](#)

In order to provide as much support as possible, once you have completed the online application for your chosen Post 16 provider, please email me at l.dorgan@theburgesshillacademy.org.uk with which college and which subjects. This will enable us to help and support you in making the best choices for you, thus avoiding you any additional stress or delays at a later stage. **Please ensure that the email address given on the application form is checked regularly as many colleges use this facility to notify students of interview dates.**

If you have any questions regarding the process, please contact me via email at l.dorgan@theburgesshillacademy.org.uk.

Please remember your success on results day and moving on to your chosen destination is dependent upon your attitude during the whole of Year 11. The more effort you put into your work, the greater the chance of success.

Good luck!

Yours sincerely

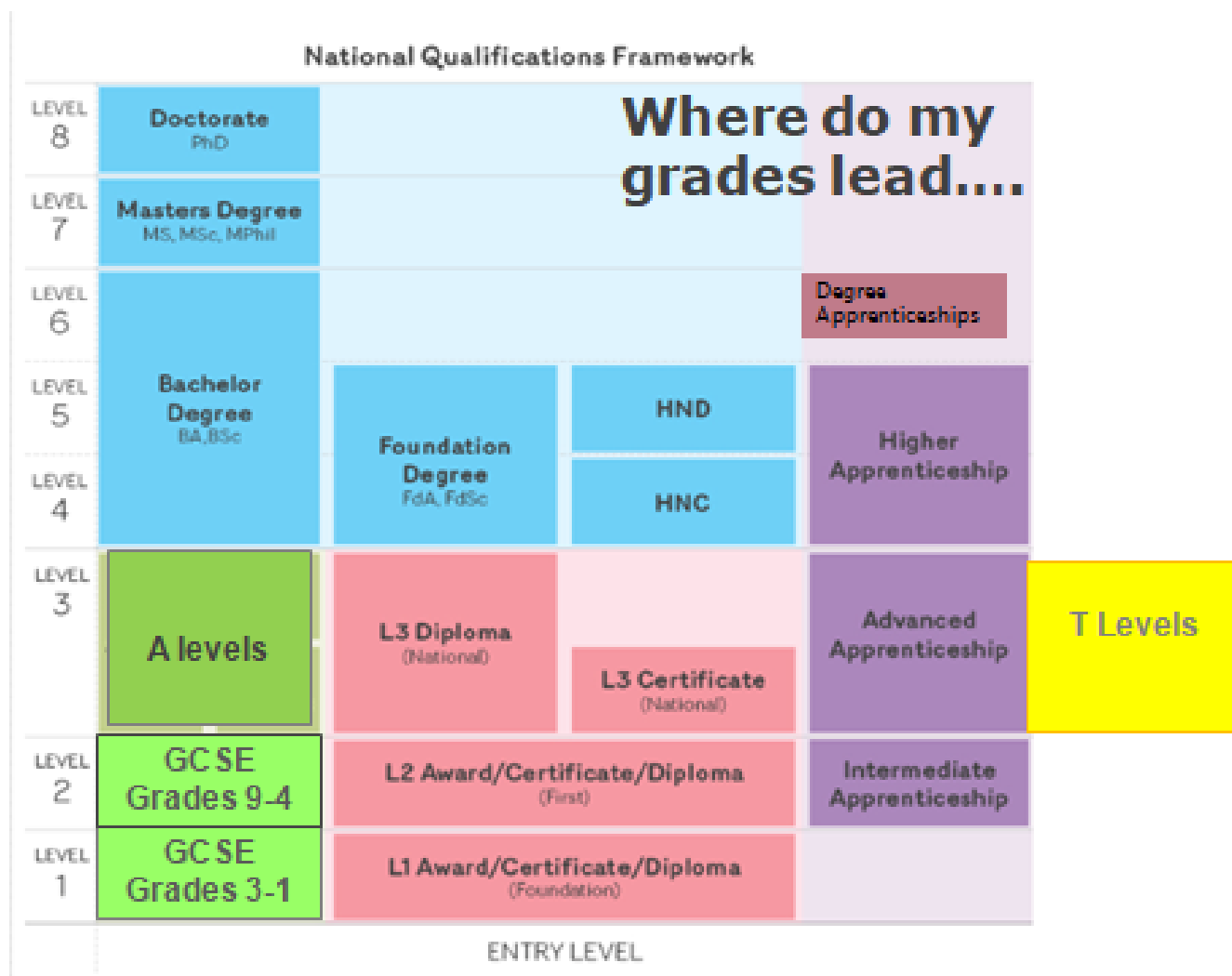


Mrs L. Dorgan
Careers Leader

THE RIGHT COURSE FOR YOU

You will be leaving The Academy with either **Level 1** GCSE grades 3- 1 or Cambridge National Level 1 Distinction, Merit or Pass or **Level 2** GCSE grades 9-4 or Cambridge National Level 2 Distinction, Merit, Pass qualifications. You will move on to study for the next level up in college in the vast majority of cases.

The level of the course gives an idea of how demanding the course is going to be – the higher the level, the more advanced the qualification. Every level contains different types of qualifications. Some are subject based, (eg A Levels) and some are vocational (work based) (eg BTECS, City and Guilds, Apprenticeships).



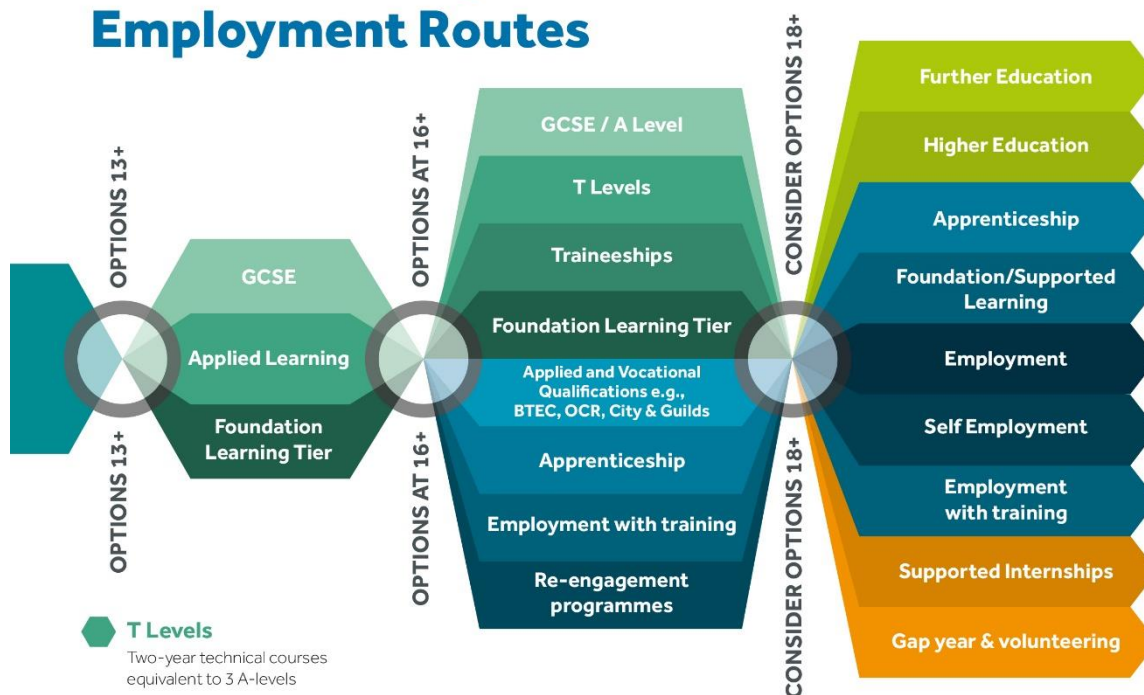
When considering the courses that you wish to take, you should ask the following questions:

- What level am I currently working at?
- What level will I achieve when I leave The Academy?
- What are the entry requirements for the qualifications/job I am interested in?
- If I want to go to university, what grades/results/qualifications/subjects will I need?
- Are the subject specific courses the same in different colleges?

ROUTES AVAILABLE TO YOU

13-19+ Learning and Employment Routes

Adapted from an original image from The CDI



T Levels

Two-year technical courses equivalent to 3 A-levels

Traineeships

A traineeship is a 6 month course that combines a work placement with maths, English and ICT.

Foundation Learning

Foundation learning courses combine practical and vocational experiences with maths, English and ICT for learners not ready for a full Level 2 course. It may include supported work based learning or volunteering, or developing skills for independent living and work.

Apprenticeship

Apprenticeships offer training for a job while working with an employer, alongside study for an associated qualification. You get paid while working.

Re-engagement programmes

Diverse programmes to support young people to have confidence and motivation to get back into learning or training.

Applied and Vocational

Qualifications with an emphasis on developing practical skills for employment which may allow access to Higher Education if taken at Level 3.

Supported Internships

For young people aged 16 - 24 with learning difficulties or learning disabilities, who want to get a job and need extra support to do this. (This would normally be through an EHCP).

A LEVEL (LEVEL 3)

The 'A' in A level stands for 'Advanced' and these qualifications are the next step up from GCSE Grade 9-4 (Level 2). A levels are two year courses with exams at the end.

Some colleges will allow students to take A levels alongside other qualifications such as BTECs, but some do not; you must check with the college if this is a route you wish to pursue. A levels are graded A* - E and score UCAS points which count towards university entrance or degree apprenticeship entrance. They may also allow you to enter the job market at a higher level than if you just had GCSEs.

Please check entry requirements for each subject at every college as they may vary.

GCSE

For students who achieve Level 1 grades at the Academy, there is the option to study a limited range of GCSEs at most sixth form colleges with a view to achieving grades 9-4. In most cases this will be a GCSE resit in Maths and English and occasionally Science combined with a Level 2 BTEC course.

What if my GCSE English and/or Maths is a 4 or below?

For students who have not yet achieved a grade 4 or above in English or Maths, some colleges offer the option of a GCSE resit. In most cases to sit a GCSE resit you will need to have achieved a grade 3 in your GCSE subject. If you achieved less than a grade 3 it is likely you will be put forward to do Functional Skills English and Maths before progressing to the GCSE. You will continue to do either Functional Skills or GCSE Maths and English until you achieve a grade 4 or Level 2 equivalent or until you are 18, whichever comes first. In most cases you will only be offered the chance to re-sit English and Maths GCSEs together with a level 2 BTEC course.

VOCATIONAL QUALIFICATIONS

These are workplace courses which are normally taken when you are working or training. Relating to around 900 occupations they recognise your ability to work well in the work place. These qualifications include NVQ, VRQ, City and Guilds Certificate, but there are a great many more available.

BTEC DIPLOMAS

This qualification is designed to provide specialist work related qualifications. They can be studied at Level 1, 2 and Level 3. At **Level- 2** (BTEC Firsts) there are three types of BTEC: Certificate, Extended Certificate and Diploma. These are usually equivalent to 2, 3 or 4 GCSEs.

At **Level 3** (BTEC Nationals) there are a range of types of BTEC. These BTECs can either be single, double or triple option as this will determine whether you study this subject alone or are able to mix with other A level/BTEC subjects. It is essential that you investigate which option is best for you.

BTECs are currently made up from a mixture of exam, course work and practical work. The % of exam will depend on the course; this could be anything from 25-45%. To take on a BTEC you will have the challenge of learning the theory required for A level standard as well as the practical application of your learning. BTECs are available in a range of industry related professions such as engineering, construction, business management, sports science, beauty, catering and many more. BTEC level 3 subjects also carry UCAS points for university entry or progression to Higher Apprenticeships and Sponsored degrees.

T LEVELS

T levels are a 2-year technical qualification which is equivalent to 3 A levels (therefore you will only study this subject). They entail 900 hours of study per academic year which includes 45 days of industry work experience across the two years of the course. It is a Pass to Distinction* grading system.

They are designed in collaboration with employers, so the content prepares students for entry into skilled employment or higher level Apprenticeships. Just like A Levels, they carry UCAS points and will allow progression into University. There are many courses available, with more being added every year. These are just a few;

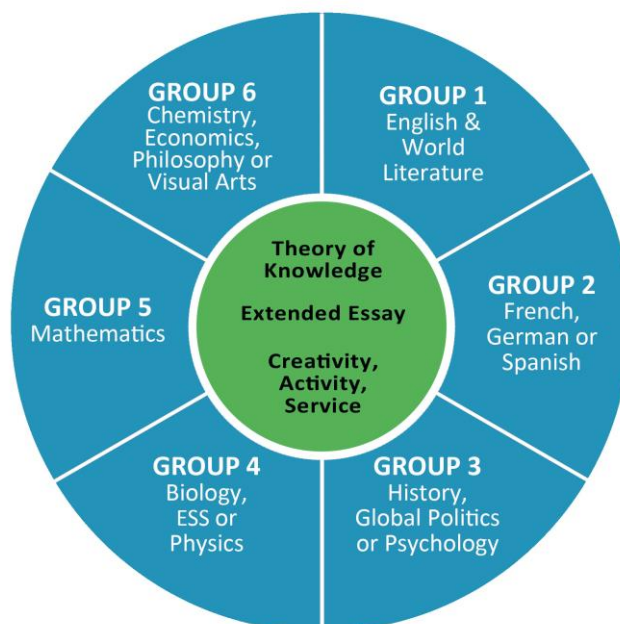
- Building Services Engineering for Construction - Crawley College
- Craft and Design - ESCG Lewes
- Design, Surveying and Planning for Construction - Crawley College
- Digital Production, Design and Development - Crawley College / Collyers / ESCG Lewes
- Education and Childcare - Haywards Heath / Crawley College / Collyers / ESCG Lewes
- Hairdressing - ESCG Lewes
- Health - Crawley College / ESCG Lewes
- Healthcare - Science Crawley College
- Maintenance, Installation and Repair for Engineering and Manufacturing - Crawley College
- Management and Administration - ESCG Lewes
- Media Broadcast and Production - ESCG Lewes
- Agriculture, Land Management and Production – Plumpton College
- Animal Care and Management – Plumpton College
- Maintenance, Installation and Repair for Engineering and Manufacturing – Plumpton College
- Education and Early Years – Varndean College

You can find out more information at: <https://www.tlevels.gov.uk/students> and college websites

INTERNATIONAL BACCALAUREATE DIPLOMA *(Only available at Varndean College)*

A challenging alternative to A Levels, which is taught worldwide and is internationally recognised and understood by universities and employers as an excellent preparation for further study and employment. The IB takes two years and is broadly equivalent to four A Levels. You will need to be organised, be interested in studying a broad range of subjects and should be expecting to achieve at least 6 GCSEs at Grades 9-6 including English and Maths.

Students study 6 elements plus an extended essay, Theory of Knowledge and Creativity, Action, Service. Students will study 3-4 elements at Higher level and the rest at Standard level. The IB is good for students who are not sure which path they want to follow.



Universities accept this qualification but students should check course requirements to ensure that the IB is accepted for the course they may wish to study. For some specialist degree courses such as medicine, A levels are preferred.

FOUNDATION LEARNING

Students who do not achieve Level 1 qualifications may wish to look at Foundation learning programmes. They are designed to promote progressions into Level 1 qualifications together with helping students to achieve nationally recognised qualifications at Entry Level and Level 1. The course includes:

- Vocational knowledge, skills and understanding
- Functional Skills (Maths, English, ICT)
- Personal and Social development
- Vocational subject based courses –e.g.: Land Studies, Cookery

APPRENTICESHIPS

Apprenticeships are available at 16, 18 or degree level. Some students will prefer to learn on the job and go to work instead of full-time college. Apprenticeships are available across a huge number of occupational areas. For school leavers they are also available at Level 2 and Level 3 with the opportunity to lead to higher apprenticeships at university degree level. Entry requirements vary; some require specific qualifications and some require an initial assessment. Apprenticeships are paid according to National Levels and usually take between 1-3 years to complete.

There are a wide range of Apprenticeships varying from office based such as Accountancy, IT, Customer Service or more practical Apprenticeships such as Engineering, Hairdressing, Beauty and Construction. The training will take place in a variety of ways; day release, block release, evenings or on-job training. Training accounts for 20% and work counts for 80%.

Any students interested in pursuing an apprenticeship should register via <https://www.gov.uk/apply-apprenticeship>. There is also a great deal of information available via <https://apprenticeships.gov.uk/influencers>

Students must have a job before they will be accepted onto an apprenticeship. Apprenticeships applications for Summer starts, will not begin until the Spring term. **Students should also apply to and secure a college as a backup** in case they are unable to find employment.

For further information, please contact Mrs Dorgan (l.dorgan@theburgesshillacademy.org.uk).

We will be holding an Apprenticeship Workshop for interested students in the Spring term. Students who are interested in an Apprenticeship should notify Mrs Dorgan to receive updates on local vacancies.

GENERAL ENTRY REQUIREMENTS

Entry requirements are listed in college prospectuses however, generally to study Level 3 courses of three full A levels / Level 3 BTEC equivalent to 3 A levels / T-Level, the college will require you to achieve grades 9-5 in 5 GCSEs (some will require 6 GCSEs at grade 9-5); they may also ask for anything up to grade 7/8 in the subject you wish to study. English and Maths will be a requirement for all Level 3 courses. For courses which the colleges deem more demanding such as English, Psychology and Maths etc., they may well ask for a level 6 in English and Maths GCSE. **It is essential you check each college's entry requirements as they may differ.** For creative courses, in addition to the academic grades you may also be required to produce a portfolio of your work or to attend an audition.

Colleges will also contact the Academy for a reference to give an indication of other factors such as attitude to learning, attendance and any extracurricular activities you may be involved in.

To study Level 2 courses – you will need 4 or more grade 3 GCSEs and where possible a grade 4 in either Maths or English, however this will not exclude you from a level 2 course.

Students should remember that you are entitled to up to three years funded further education as long as you are showing progress in your learning so students who do not reach these entry requirements can start on a Level 1 course and progress onto Level 2, or start on Level 2 courses and progress onto Level 3. Alternatively, students who have chosen to change their course at the end of their first year may be entitled to start again for an additional 2 years of study.

If you do not achieve a grade 4/5 in your English and Maths and are looking to resit or retake the course, you will need to check with the college whether they will offer this opportunity to you. In some cases, you may be offered the opportunity to take an equivalent course, not a GCSE. If you require any further guidance, please contact the college to which you are applying.

There are many course levels and qualifications available and choosing what is right for you can be confusing. If you are uncertain do seek help and advice from our Independent Careers Advisor, Carl Jackson –Mrs Dorgan is available to answer any queries or concerns.

THE GUIDANCE PROGRAMME

This year The Burgess Hill Academy offers advice and information in the following forms:

1. Post 16 Information Evening – Tuesday 1st October from 6.15pm
2. Sixth Form College prospectuses are available from Mrs Dorgan.
3. Every student will be given an appointment with Carl Jackson, our independent careers adviser. It is important that students check their emails regularly as this is the way that students will be notified of their appointment time. It is also important that students attend this appointment or, if there is a problem with the date, notify Mrs Dorgan asap so that the time can be changed. We can only offer one appointment.
4. Application Support – Mrs Dorgan is happy to help students to complete online college applications – requests for appointments should be emailed to l.dorgan@theburgesshillacademy.org.uk
5. College interviews will take place between November and March. **Students will need to take their personal statement, tutor statement, latest tracking sheet and mock results when available. We will provide a letter with grades for college applications in at the beginning of November to assist students in understanding their possible predicted grades.**

We recommend that **EVERY** student applies to AT LEAST **TWO** colleges (wherever possible). Plans change – it is always good to have a back-up.

For parents and students who are in great doubt and need further guidance, interviews with careers staff and/or senior staff may be arranged by request via Mrs Dorgan.

Please do not hesitate to contact me via email at l.dorgan@theburgesshillacademy.org.uk if you have any queries or concerns.

TRAVEL

Further Education is at present still free but parents/students have to pay travel costs.

Students travelling by rail can purchase the 16-17 rail card – [16-17 Saver | Half Price Travel | National Rail](#). This can give 50% discount on season tickets. The rail card costs £30 and is valid for one year. It will automatically expire on the students 18th birthday, although season tickets bought before that date, will continue to be valid. Buy the card on line via the website and it can be downloaded as a phone APP, or the rail card will be posted to you on the day of purchase. Cards should be purchased on-line via the website.

Compass Travel buses - Young people aged 16 to 19: In East Sussex, West Sussex and Brighton & Hove students may be entitled to discounted tickets. Details can be found here. [Fare deals for young people under 19 | Compass Travel \(compass-travel.co.uk\)](#) or <https://www.citizencard.com/>

Students with an EHCP may be eligible for free transport to College. Check out the information on the West Sussex website: [Post-16 and college transport for students with SEND - West Sussex County Council](#)

16 to 19 Bursary Fund

This provides help to pay for essential education-related costs if you're aged 16 to 19 and in further education or training. Unfortunately you can't apply if you're studying at university.

The Bursary Fund can help pay for costs like:

- equipment you might need for your course
- lunch
- transport to and from your school or college

Vulnerable student bursary – You could get up to £1,200 if at least one of the following applies:

- you're in or recently left local authority care
- you get Income Support or Universal Credit because you're financially supporting yourself
- you get Disability Living Allowance (DLA) in your name and either Employment and Support Allowance (ESA) or Universal Credit
- you get Personal Independence Payment (PIP) in your name and either ESA or Universal

Credit Discretionary bursary – You can apply for a discretionary bursary if you are not eligible for a vulnerable bursary but you need financial help to stay on in further education or training. Your school, college or training provider will have its own eligibility criteria as their funds are limited and they need to make sure it gets to the students who most need financial help to stay on in further education or training. The eligibility criteria might be based on your family's income, whether your parents receive benefits, or whether you have previously been entitled to free school meals. Payment of bursaries will depend on attendance, behaviour and standard of work.

You should make an application as soon as you have decided where you are going to study. The sooner you apply, the sooner you will start to receive support.

Students should contact the student support services of the college they are going to. For further information visit www.gov.uk/1619-bursary-fund

UNIVERSITY

If you are thinking of going to university, please note that you must have a grade 4 (or in some cases grade 5) in English Language and Maths. Most require that a student takes at least 3 subjects through to the full A level / level 3 BTEC equivalent or T Level equivalent. Some University subjects will require that the student has studied the same subject at A level.

If you are looking at a specific pathway such as medicine, please check with the university that the courses you are looking at will meet their entry requirements.

There are also university courses available for students who have not completed 3 A levels or a full level 3 BTEC. For further information on university courses and entrance requirements, please visit the UCAS website at [UCAS | At the heart of connecting people to higher education](#) or speak to Mrs Dorgan about all your university options.

THINGS TO CONSIDER WHEN CHOOSING A COLLEGE

Courses	The same course at different colleges may contain differing modules. Please ensure that you check the course details. In addition, check course requirements as some courses will require specific grades at GCSE to take the subject at A level.
Progression	If you wish to go onto Higher Education, your chosen subject area may have specific requirements at GCSE and A level.
Quality	Look at the individual subject pass rates to see which college is best for the subject you wish to take.
Travelling	Make sure that you know how you will get there every day and that you can afford it.
Talk to	Your subject teachers Careers Adviser Friends Parents Students currently at the college (when attending the Open Evening) - they will be able to provide practical information.

BHASVIC and Varndean Colleges operate a joint application form. Your application will only be received at your first-choice college as you CANNOT apply to both colleges.

CAREERS WEBSITES

National Careers Service – <https://nationalcareersservice.direct.gov.uk>

Provides lots of information on job profiles, how to write a CV, interview techniques. There is also the facility to speak to an adviser.

Barclays Lifeskills - <https://barclayslifeskills.com/>

Free to register and offers a wealth of information on interview techniques, CV writing, essential skills for work

Apprenticeships – www.apprenticeships.org.uk or www.apprenticeships-in-sussex.com

For information on Apprenticeships. Remember if you are choosing the Apprenticeship route, please apply to colleges as a backup if you are unable to secure employment with apprenticeship. [Guide to Apprenticeships](#)

Get Career Confident - <https://www.getcareerconfident.co.uk/>

[WHAT NEXT A5 BROCHURE Digital 2022.pdf \(getcareerconfident.co.uk\)](#)

Elev8careers - <http://www.elev8careers.org.uk/>

How2become - <https://www.how2become.com/>

What Uni - <https://www.whatuni.com/>

First Careers - <https://www.firstcareers.co.uk/>

UCAS - <https://www.ucas.com/>

Unifrog - [Unifrog - The universal destinations platform.](#)

Not Going To Uni - [NGTU | Home \(notgoingtouni.co.uk\)](http://notgoingtouni.co.uk) Online apprenticeship guide

Informed Choices - [Informed Choices | Informed Choices](#) A website aimed at helping you understand which subjects open up different degrees, very important for those looking at RussellGroup universities.

CareerMap - [Apprenticeships, Graduate Schemes & Jobs - Careermap](#)

Sussex at School - <https://successatschool.org/> Information on career pathways and CV writing and more.

Make the Future Yours - [Latest Issue of Make the Future Yours! — Make The Future Yours!](#)
Online magazine for parents and students

Careers in the NHS - [Health Careers |](#)

Tomorrow's Engineers [Inspiring Tomorrow's Engineers - Tomorrow's Engineers \(tomorrowsengineers.org.uk\)](#)

[Careers, jobs and skills training in film, TV, VFX, animation and games - ScreenSkills](#)

College Open Events 2024-25

Brighton Aldridge Community Academy (BACA) Brighton Aldridge Community Academy - BACA College Open Evening (baca-uk.org.uk)	17 th October 2024 6pm-8pm
BN1 Arts Open Days and Events (bn1arts.co.uk)	28 th September 10am-12pm
BHASVIC https://www.bhasvic.ac.uk/admissions/open-events	13 th and 14 th November 4-8pm
Brighton MET College Central Campus and East Campus Open Events Brighton MET	9 th October 4.30pm-7pm 23 rd November 10am-1pm
Northbrook College West Durrington, Broadwater And Shoreham Airport Campuses Open day Northbrook College	3 rd October 4.30pm-7pm 16 th November 10am-1pm
Brinsbury College Open Events Brinsbury College	12 th October 10am-1pm
Burgess Hill Girls School (Independent) https://burgesshillgirls.com/admissions/open-events	2 nd October 6pm-9pm
Cardinal Newman College Newman College Hove	9 th November 10am-1pm
Crawley College Open Events Crawley College	10 th October 4.30pm-7pm 9 th November 10am-1pm
Collyer's College, Horsham https://www.collyers.ac.uk/admissions/open-evenings	Check website for details
Dv8 Sussex Dv8 Sussex: Creative College and Education in Brighton and Bexhill	Check website for details
East Sussex College Lewes Campus https://www.escg.ac.uk/whats-on/open-events	17 th October and 14 th November (check website for times)
Haywards Heath College Open Events Haywards Heath College	21 st and 22 nd October 4.30pm-7pm
Hurstpierpoint College (Independent) https://www.hppc.co.uk/admissions/open-mornings-and-visits	5 th October (check website for times)
Plumpton College https://www.plumpton.ac.uk/news-events/calendar-of-events	25 th September 5pm-7.30pm 12 th October 9am-12pm 23 rd November 9am-12pm
Steve Willis Training (Apprenticeship provider) https://stevewillis.com/apprenticeships	Check website for details of Taster days

St Pauls Catholic College Sixth Form

<https://www.stpaulssixthform.co.uk>

10th October 6pm-8pm

Varndean College

<https://varndean.ac.uk/events>

28th September 11am-2pm

6th and 7th November 5pm-8pm

International Baccalaureate

Diploma Presentation – 8th October
6.30pm-7.45pm

PRIORITY APPLICATIONS DEADLINES

BHASVIC	6 th December
Varndean College	6 th December
Haywards Heath College	18 th December
St Pauls Sixth Form	20 th December
East Sussex College Group	20 th December
Plumpton College	End of January

Brighton MET/Northbrook College/Crawley College – will consider applications throughout the year but recommend early applications to ensure space is available on your chosen course.

These are the dates for the priority consideration. Applications received after these dates will still be considered once the priority applications have been interviewed.

We recommend that ALL students make their applications by the **end of November** to avoid unnecessary stress and apply to at least TWO colleges.

PLEASE REMEMBER: There is lots of information and things may feel overwhelming, but there is plenty of support at school. I am available in my office in B block every break and lunch time. You can email me at l.dorgan@theburgesshillacademy.org.uk. Your teachers, tutors and Pastoral Lead, Ms Ashbridge can also help you to understand your next steps. If you require an early careers meeting with Carl Jackson, please let me or your tutor know.

USEFUL ADDRESSES and TELEPHONE NUMBERS

West Sussex Education Department (Grants & Awards), County Hall, Chichester, PO1-1RF.
01243 777990

Northbrook MET College, Goring-by-Sea, Worthing, BN12 6NU.
01903 606060 www.northbrook.ac.uk

St. Paul's Catholic College, Jane Murray Way, Burgess Hill, RH15 8GA.
01444 873898 www.stpaulscatholiccollege.co.uk

Varndean College, Surrenden Road, Brighton, BN1 6QW.
01273 508011 www.varndean.ac.uk

Brighton MET College, Brighton & Hove, Pelham Street, Brighton, BN1 4FA.
01273 667788 [Greater Brighton Metropolitan College \(gbmc.ac.uk\)](http://Greater Brighton Metropolitan College (gbmc.ac.uk))

Brighton, Hove & Sussex Sixth Form College (BHASVIC), 205 Dyke Road, Hove, BN3 6EG.
01273 552200 www.bhasvic.ac.uk

East Sussex College - Lewes Sixth Form Centre, Mountfield Road, Lewes, BN 2XH
01273 483188 [Welcome | East Sussex College \(escg.ac.uk\)](http://Welcome | East Sussex College (escg.ac.uk))

Plumpton College, Ditchling Road, Plumpton, Nr Lewes, East Sussex, BN7 3AE.
01273 890454 www.plumpton.ac.uk

Burgess Hill Girls, Keymer Road, Burgess Hill, West Sussex, RH15 0EG
01444 241050 Independent School Sussex - Burgess Hill Girls

Hurstpierpoint College, College Lane, Hurstpierpoint, Hassocks, BN6 9JJ
01273 836937 www.hppc.co.uk

Crawley College, College Road, Crawley, RH10 1NR
01293 442200 www.crawley.ac.uk

The College of Richard Collyer, 82 Hurst Road, Horsham, RH12 2EJ
01403 210822 www.collyers.ac.uk

DV8, 12 Queen Square, Brighton, BN1 3FD
01273 550432 www.dv8sussex.com

Haywards Heath College, Harlands Rd, Haywards Heath RH16 1LT
01444 711900 <http://www.haywardsheath.ac.uk/>