

2024-2025

USD Budget Profile



NEWTON

PUBLIC SCHOOLS

Order of Contents

- Budget General Information (characteristics of district)
- Supplemental Information for Tables in *Summary of Expenditures*
- KSDE Website Information Available
- Summary of Expenditures (Sumexpen.xlsx)

2024-2025 Budget – General Information

USD #: 373

Introduction

Newton Unified School District 373 serves approximately 3,000 Pre-Kindergarten through 12th grade students in Harvey County. District attendance centers include an early education center, four elementary schools, a 5/6 grade center, one middle school one alternative school (7-12) and on high school. Newton USD 373 works cooperatively with St. Mary’s School to provide art, music and physical education, as well as media services, instructional support for English Language Learners and special education students, and reading support services. USD 373 is the sponsoring district for the Harvey County Special Education Cooperative, which serves over 900 special needs students in Newton, Halstead and Hesston. Some students receive educational services at Prairie View through contracted services.

Board Members

Melissa Schreiber, Board President
Andy Ortiz, Board Vice President
Ian Reid Anderson Long
Mallory Morton

Dayna Steinmetz
Ericia Stevens
Vacant Seat

Key Staff

Superintendent: Fred Van Ranken
Assistant Superintendent: Joseph Sample
Board Clerk: Joni Jantz
Director of Business &
Human Resources: Jane Nichols
Director of Special Education: Reagan Seidl
Director of Technology: Brenda Lampman Thompson
Director of Communications – Carly Stavola

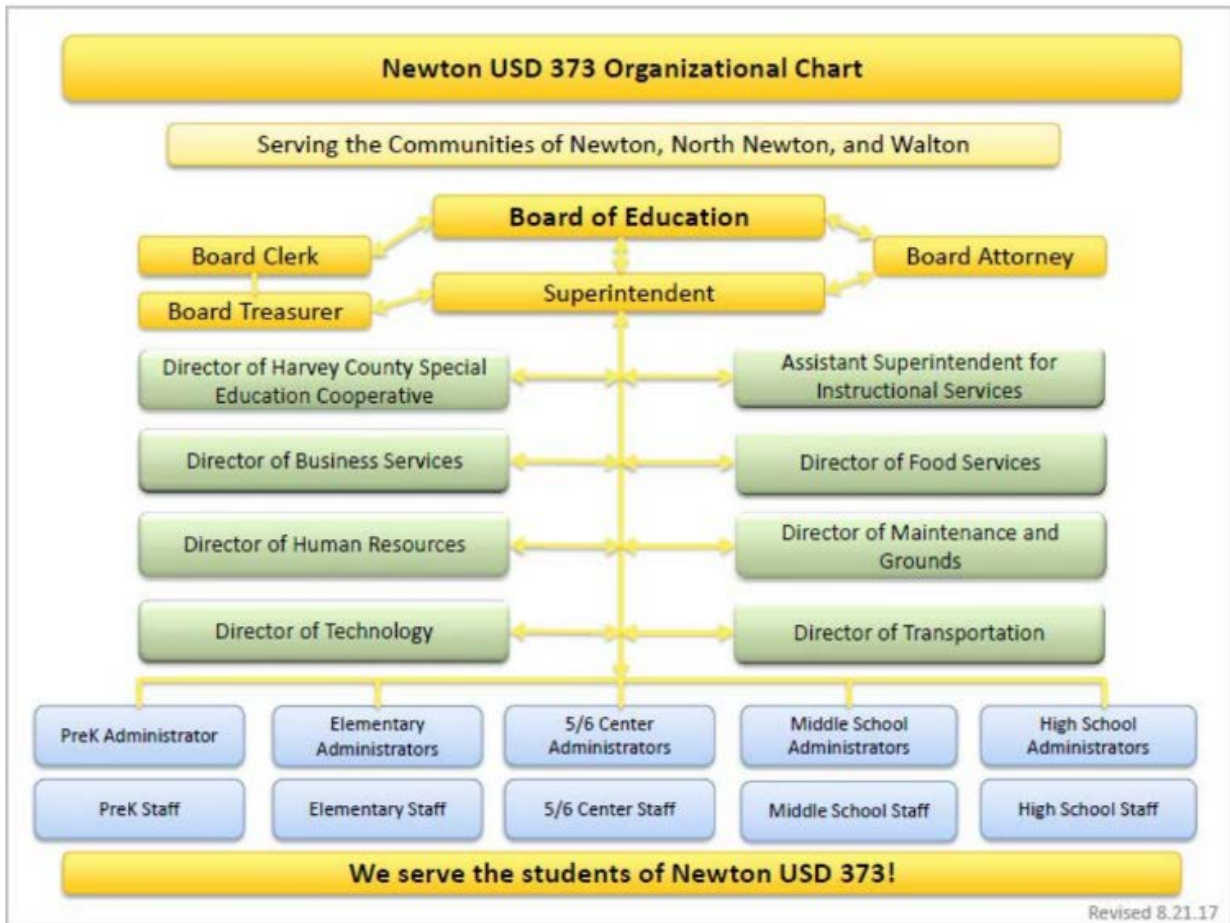
Newton USD Mission

The mission of the Newton School Community is to prepare and empower our students to be contributing participants in a changing world.

USD 373 District Belief Statement

We believe that:

- The educational needs of each student must be met.
- The needs of students must drive decision-making.
- Education is an active partnership involving students, families, schools and community.
- Motivation, opportunity and effort are critical to success.
- High expectations foster quality performance.
- The right to education conveys both privilege and responsibility.



The District's Accomplishments and Challenges

Accomplishments:

- Approximate 89% graduation rate
- Approximate 24 average ACT score
- Chad Nulik - 2024 Kansas Assistant Principal of the Year winner
- South Breeze Elementary school received the 2024 Kansas State Department of Education's "Challenge Award" for achievement and uncommon accomplishments based on Kansas Assessment results in math and reading, graduation rates, chronic absenteeism rates and the socio-economic status of those taking the test.
- All elementary school locations were honored with a "District Launch" award by Project Lead the Way in 2024.
- Newton High School student Anahi Sanchez was named a 2024 US Presidential Scholar. Sanchez was one of three students in Kansas to win the award, and the only public school student in Kansas.

Challenges:

- Staffing Shortages: Significant need for more qualified staff, including substitutes, social workers, counselors, and specialized positions like ELL and SPED educators.

- Aging Infrastructure: Issues with outdated facilities, water leak, and the need for more space, impacting the learning environment.
- Declining Enrollment: Declining enrollment across the district for the past four-plus years have led to challenges from a budgetary perspective to ensure we are competitive from a salary perspective while continuing to offer quality educational service (to include low student-to-teacher class sizes).
- Transportation Challenges: Need for more bus drivers, updated vehicles, and improved transportation strategies, particularly in high truancy areas.
- Academic Performance: Increased percentages of students in level 1 on state assessments reveal a core instructional problem that the district continues to try to address through strategic planning.

Supplemental Information for the Following Tables

1. Summary of Total Expenditures by Function (All Funds)
2. Summary of General Fund Expenditures by Function
3. Summary of Supplemental General Fund Expenditures by Function
4. Summary of General and Supplemental General Fund Expenditures by Function
5. Summary of Special Education Fund by Function
6. Instruction Expenditures (1000)
7. Student Support Expenditures (2100)
8. Instructional Support Expenditures (2200)
9. General Administration Expenditures (2300)
10. School Administration Expenditures (2400)
11. Central Services Expenditures (2500)
12. Operations and Maintenance Expenditures (2600)
13. Transportation Expenditures (2700)
14. Other Support Services Expenditures (2900)
15. Food Service Expenditures (3100)
16. Community Services Operations (3300)
17. Capital Improvements (4000)
18. Debt Services (5100)
19. Miscellaneous Information – Transfers (5200)
20. Miscellaneous Information Unencumbered Cash Balance by Fund
21. Reserve Funds Unencumbered Cash Balance
22. Other Information – Enrollment Information
23. Miscellaneous Information Mill Rates by Fund
24. Other Information – Assessed Valuation and Bonded Indebtedness

Note: FTE is the audited enrollment 9/20 and 2/20 (if applicable) and estimated for the budget year, which includes preschool-aged at-risk and virtual enrollment. Enrollment does not include non-funded preschool. Beginning 2017-2018, full-day Kindergarten is 1.0 FTE. Beginning 2021-2022, three-year-

old at-risk students were funded. This information is used for calculating Amount Per Pupil for Sumexpen.xlsx and Budget At A Glance (BAG).

KSDE Website Information Available

K-12 Statistics (Building, District or State Totals) Report Generator:

https://datacentral.ksde.org/report_gen.aspx

- Attendance / Enrollment Reports
- Staff Reports
- Graduates / Dropouts Reports
- Crime / Violence Reports

School Finance Reports (Data Central) website below:

<https://datacentral.ksde.org/default.aspx>

- Assessed Valuation
- Cash Balances
- Headcount Enrollment
- Mill Levies
- Personnel (Certified/Non-Certified)
- Salary Reports

Kansas Building Report Card website below:

<http://ksreportcard.ksde.org/>

- Attendance Rate
- Graduation Rate
- Dropout Rate
- School Violence
- Assessments
 - Reading
 - Mathematics
 - Writing
- Graduates Passing Adv. Science Courses
- Graduates Passing Adv. Math Courses

Accountability Reports website below:

<https://datacentral.ksde.org/accountability.aspx>

- Performance Accountability Reports
- Financial Accountability Reports
- Longitudinal Achievement Reports