



Emergent Bilingual Learner Program Evaluation

2024-2025

Emergent Bilingual Department

Michael Griffin, Ed.D.,
Assistant Superintendent for Curriculum and Instruction

Stephanie Espinosa, Ed.D.,
Executive Director for Teaching and Learning

Sunni Johnson, Ph.D.,
Director for Curriculum and Instruction

Mary Martin,
Language Acquisition Coordinator



Program Content & Design

Districts with 20+ EB students in any elementary grade across the district must offer bilingual education (PK-5).

- Clara Love, Roanoke, and Prairie View provide the one-way dual language model to satisfy the bilingual requirement.
- Transportation is provided for bilingual students.

ESL is required for EB students not in bilingual programs.

- At elementary ESL support is provided by ESL certified teachers and ESL Specialists through inclusion and pull-out.
- At secondary ESL support is provided by ESL certified ELA teachers through ELA courses and Sheltered ELA courses.



Program Procedures

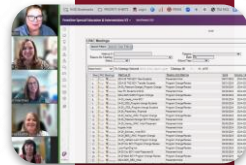
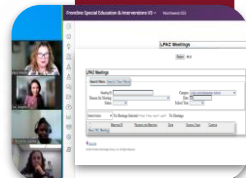
Identification, Placement, Review, & Reclassification

Texas Education Agency (TEA) Requires:

- **An LPAC:** Determines student identification, placement, review, and reclassification.
- **LPAC members:** ESL teacher, bilingual teacher, administrator, and parent.
- **TEA Developed Home Language Survey:** Identifies students needing language testing and support.

NISD Satisfies Requirements through:

- **District Centralized LPACs:** Scheduled via Zoom and in person to build capacity.
- **District LPAC Calendar:** Scheduled administrators, teachers, and parents ensuring compliance and minimizing time on task.
- **TEA Developed Home Language Survey:** Embedded within online registration.



Program Numbers

2019-2024
173.7%
Increase



Program Model	2020-21	2021-22	2022-23	2023-24	2024-25
ESL	1499	1830	2298	2579	3043
Bilingual	201	204	307	341	474
Total	1700	2034	2605	2920	3517*

**This is a preliminary number, official numbers will be available after the Snapshot date in October.*



Starting Early

	2020-21	2021-22	2022-23	2023-24	Current
Total PK Students	359	482	587	872	1062
ESL PK Students	124	143	193	206	380*
Dual Language PK Students	27	45	79	64	95*

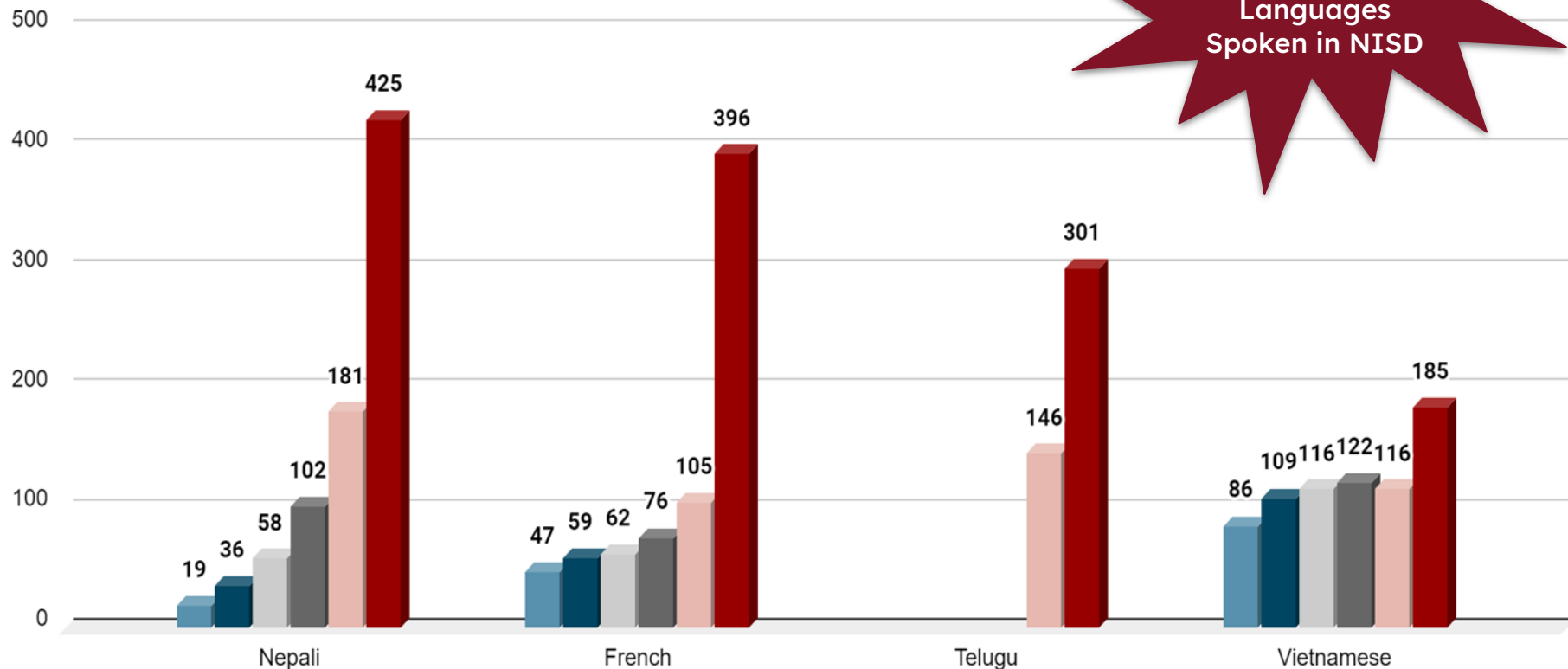


*These are preliminary numbers, official numbers will be available after the Snapshot date in October.



Top Languages in NISD

78
Languages
Spoken in NISD



Languages by Elementary Grades

	PRE-K		KG		1ST		2ND		3RD		4TH		5TH	
	2023	2024	2023	2024	2023	2024	2023	2024	2023	2024	2023	2024	2023	2024
SPANISH	72	202	101	141	97	141	93	171	90	166	99	167	107	172
NEPALI	29	74	34	37	30	39	19	34	10	39	16	28	6	34
TELUGU	26	53	19	25	15	24	9	34	6	22	9	21	9	21
FRENCH	9	28	12	26	7	8	4	27	2	23	4	26	8	33
VIETNAMESE	0	13	0	11	0	8	0	5	0	6	0	11	0	13

**This is a preliminary number, official numbers will be available after the Snapshot date in October.*



Top 5 in Texas: *1)Spanish 2)Vietnamese
3)Arabic 4)Urdu 5)Mandarin*



Languages by Secondary Grades

	6th	7th	8th	9th	10th	11th	12th
SPANISH	172	192	179	188	197	181	168
NEPALI	32	26	14	17	13	12	15
TELUGU	16	13	16	15	8	4	7
FRENCH	28	31	26	28	27	29	22
VIETNAMESE	15	17	12	15	17	20	16

**This is a preliminary number, official numbers will be available after the Snapshot date in October.*



**Top 5 in Texas: 1)Spanish 2)Vietnamese
3)Arabic 4)Urdu 5)Mandarin**



Student Enrichment

Language Academy (Grades K-1)

4 weeks in the summer

Newcomer Academy (Grades 2-10)

2 weeks in the summer

- Support social and academic language development
- Support literacy development
- Build background knowledge
- Provide students with opportunities to preview curriculum concepts
- Meet state requirements for bilingual/ ESL summer school in K-1
- Provide Title III supplemental opportunities for content and language development in grades 2-10



Professional Learning



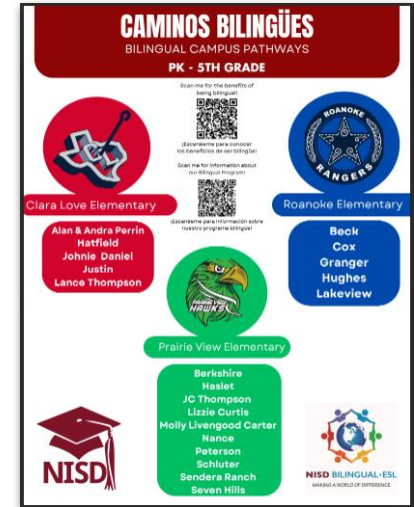
Supporting all teachers that have emergent bilingual students in their classrooms is critical. Here are a few learning opportunities we provided.

- ESL Supplemental Preparation Training and Coaching
- Getting Started with Emergent Bilinguals
- Next Steps to Supporting Emergent Bilinguals in the Classroom
- Dual Language Gómez and Gómez Institute
- Bilingual Learning Centers
- Stay Organized When I Have Multiple Students with Different Interventions, Accommodations, and Modifications!



Staffing & Program Support

- Hired 4 additional ESL Specialists for elementary EB students.
- Hired a Bilingual Intervention Specialist for Clara Love.
- Hired elementary and secondary ESL Teacher Support Specialists.
- Added Clara Love, a PK-2nd grade dual language campus.
- Designated sheltered ELA courses at the secondary to intentionally support the growing number of newcomer EB students.



Curriculum Support

- English Language Proficiency Standard (ELPS) embedded in revised curriculum documents
- Suggested accommodations highlighted in the curriculum
- Ongoing coach led PLCs at all levels to provide instructional support strategies for teaching language acquisition and content to EBs
- Instructional strategies and newsletters provided by ESL Specialists to support classroom teachers
- Instructional coach modeled lessons to support teachers in delivering lessons to EB students



Bilingual Exception & ESL Waiver

2022-2023

- We filed a bilingual exception for Spanish and Nepali
- We filed an ESL waiver for 29 teachers elementary through secondary

2023-2024

- We filed a bilingual exception for French, Nepali, and Telugu
- We filed an ESL waiver for 7 teachers at secondary

2024-2025

- We are projected to file a bilingual exception for French, Nepali, and Telugu
- We are not projected to file an ESL waiver

TELPAS Data

	Total # Tested (K-2)	Advanced High Composite Score (K-2)	Total # Tested 3-12)	Advanced High Composite Score (3-12)
2021	522	127	1035	225
2022	662	141	1378	310
2023*	868	20	1743	20
2024	1065	206	2172	461

**TELPAS 2-12 writing was combined with the reading assessment as an online assessment.*

2023
43 EBs
Reclassified



2024
349 EBs
Reclassified



State Assessment Data

Emergent Bilingual

	NISD			Region 11			State		
Grades 3-8	Approaches	Meets	Masters	Approaches	Meets	Masters	Approaches	Meets	Masters
All Subjects	73	41	13	64	33	10	65	36	12
Reading	72	40	14	63	33	10	65	35	13
Math	65	30	9	60	29	9	63	32	10
Science	51	21	5	49	19	5	52	23	6
Social Studies	51	21	7	38	13	4	40	14	5

State Assessment Data

Emergent Bilingual

	NISD			Region 11			State		
EOC	Approaches	Meets	Masters	Approaches	Meets	Masters	Approaches	Meets	Masters
All Subjects	68	33	7	66	31	6	65	31	7
Algebra 1	67	26	11	65	27	10	69	31	13
Biology	78	37	9	76	31	6	76	31	6
English 1	53	33	3	50	29	2	48	28	2
English 2	53	33	3	50	26	1	47	24	1
U.S. History	91	43	12	89	44	13	87	42	13

Challenges

- Rapid growth in our emergent bilingual population
- Providing transportation for our EBs in the dual language program
- Increase in Secondary EBs entering our district with higher academic need than elementary EBs
- Increase number of EBs at all levels are refugees/asylees with trauma or academic gaps
- Our emergent bilinguals have opportunity for improvement in the “Meets” and “Masters” testing areas in 3-8 Science, Algebra 1, and U.S. History
- Difficulty finding bilingual and ESL certified teachers



Celebrations

- Rapid growth in our emergent bilingual population
- A new dual language campus to serve our growing bilingual numbers
- Increased numbers of Pre-K students receiving early intervention
- Our emergent bilinguals outperform the state and region averages in all areas at the “Approaches” level
- Supplemental resources at all levels have been purchased through local and Title III funds to support instructional needs of EBs
- Adult ESL Classes hosted at 2 elementary schools serving approximately 125 EB families



Questions