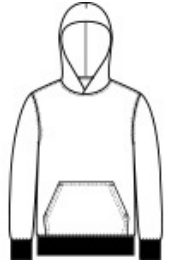


Cozy sweats in our core weight.

- 7.8-ounce, 50/50 cotton/poly fleece
- Air jet yarn for softness
- No draw cord at hood
- Removable tag for comfort and relabeling

CARE INSTRUCTIONS

Machine wash cold, inside out, with like colors. Only non-chlorine bleach when needed. Tumble dry medium. Medium-hot iron. Do not iron decoration.



front



back

HOW TO MEASURE



CHEST WIDTH

Measure under the arm and around the fullest part of the chest with arms down, keeping tape horizontal.

SIZE CHART

| | XS | S | M | L | XL |
|-------|-------|-------|-------|-------|-------|
| Size | 4 | 6/8 | 10/12 | 14/16 | 18/20 |
| Chest | 25-26 | 26-28 | 28-30 | 30-32 | 32-35 |

COLOR INFORMATION

Please note: PMS code information is shown only when an exact match is available.

| | | | | | | | | | | |
|----------------------------|---|----------------------------|----------------------------------|---------------------------|-------------------------------------|-------------------------|--------------------------------|-------------------------|--|---------------------------|
| | | | | | | | | | | |
| Ash PMS COOL GRAY 3C | Athletic Heather PMS COOL GRAY 7C | Carolina Blue PMS 7682C | Charcoal PMS COOL GRAY 11C | Coyote Brown PMS 2326C | Dark Chocolate Brown PMS 412C | Dark Green PMS 560C | Dark Heather Grey PMS 7540C | Gold PMS 137C | Graphite Heather PMS COOL GREY 10C | Heather Navy PMS 2379C |
| | | | | | | | | | | |
| Jet Black PMS BLACK C | Kelly Green PMS 340C | Lime PMS 367C | Maroon PMS 490C | Navy PMS 2380C | Neon Blue PMS 801C | Neon Green PMS 902C | Neon Pink PMS 926C | Neon Yellow PMS 379C | Olive Drab Green PMS 7771C | Orange PMS 172C |
| | | | | | | | | | | |
| Purple PMS 7672C | Red PMS 200C | Royal PMS 2133 C | Sangria PMS 2046C | Sapphire PMS 2185C | Team Purple PMS 669C | True Royal PMS 7687C | White | Woodland Brown | | |

SPORT-TEK®

Sport-Tek® Youth PosiCharge® Competitor™ Tee. YST350



Lightweight, roomy and highly breathable, these moisture-wicking, value-priced tees feature PosiCharge technology to lock in color and prevent logos from fading.

- 3.8-ounce, 100% polyester interlock with PosiCharge technology
- Removable tag for comfort and relabeling
- Set-in sleeves

Given the extreme heat required for sublimation, please consult with your decorator. It is highly recommended to sample test product by color before production.

CARE INSTRUCTIONS

Machine wash cold with like colors, non-chlorine bleach only if needed, do not use fabric softener, tumble dry low, remove promptly, cool iron if necessary, do not dry clean.

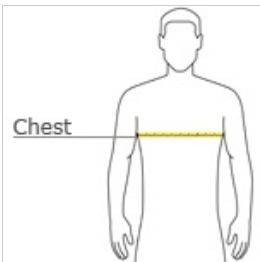


front



back

HOW TO MEASURE



CHEST WIDTH

Measure under the arm and around the fullest part of the chest with arms down, keeping tape horizontal.

SIZE CHART

| | XS | S | M | L | XL |
|-------|-------|-------|-------|-------|-------|
| Size | 4 | 6/8 | 10/12 | 14/16 | 18/20 |
| Chest | 25-26 | 26-28 | 28-30 | 30-32 | 32-35 |

COLOR INFORMATION

Please note: PMS code information is shown only when an exact match is available.

| | | | | | | | | | | |
|--|---|---|---|---|---|---|---|---|---|---|
|  |  |  |  |  |  |  |  |  |  |  |
| Atomic Blue PMS 2203C | Black PMS BLACK C | Cardinal PMS 7421C | Carolina Blue PMS 7454C | Deep Orange PMS 173C | Deep Red PMS 201C | Forest Green PMS 553C | Gold PMS 1235C | Grey Concrete PMS COOL GRAY 10C | Grey Concrete Heather PMS COOL GRAY 10C | Hot Coral |
|  |  |  |  |  |  |  |  |  |  |  |
| Iron Grey PMS 7540C | Iron Grey Heather PMS 7540C | Kelly Green PMS 341C | Lime Shock PMS 375C | Maroon PMS 504C | Neon Orange | Neon Pink PMS 806C | Neon Yellow | Pink Raspberry PMS 7425C | Purple PMS 7672C | Silver PMS 429C |
|  |  |  |  |  |  | | | | | |
| Texas Orange PMS 7584C | Tropic Blue PMS 7474C | True Navy PMS 533C | True Red PMS 200C | True Royal PMS 7686C | White | | | | | |