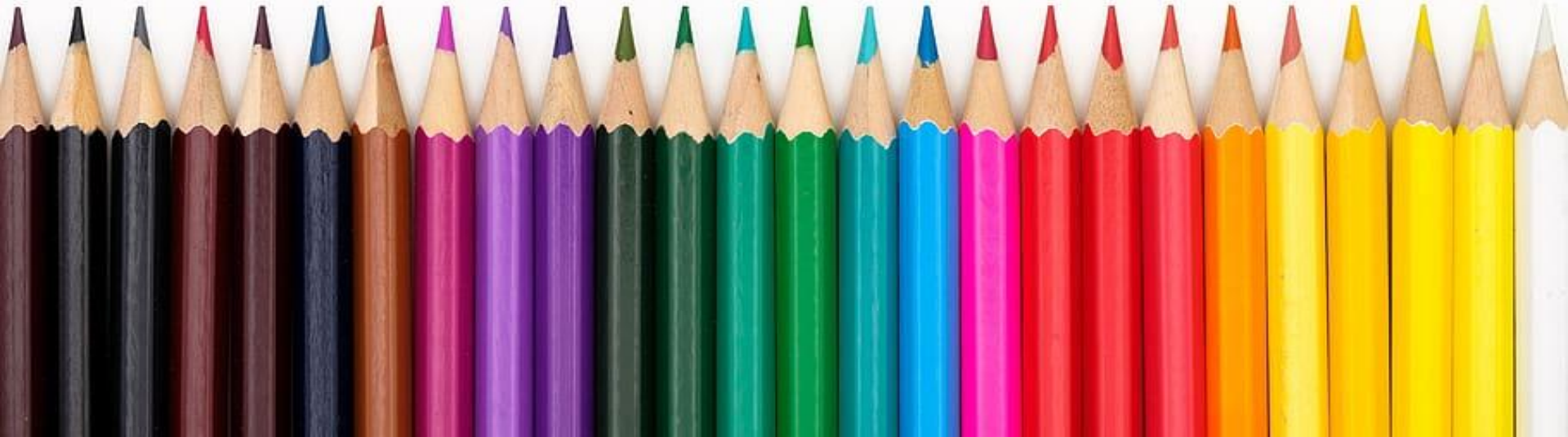


Project Before Preschool

Sayreville Public Schools

Audrey Burns

Director of Early Childhood Curriculum & Instruction



Agenda

1. Who are we?
2. Programs
3. Preschool Locations
4. Program Hours
5. School Times
6. Classroom Staff
7. Additional Staff
8. Tentative Daily Schedule
9. Curriculum
10. Typical Day
11. Screenings
12. Parents
13. Outside Activities
14. Parental involvement
15. Attendance
16. District Calendar
17. Before/After care
18. Additional Information



Project Before Preschool Program



The mission of Sayreville Public Schools is to educate today's learners to be tomorrow's leaders by providing all students with a high quality, challenging education that instills character and enables our students to compete successfully in the 21st century...

and it all begins in our awesome preschool program!

Play gives children a chance to practice what they are learning!

~Fred Rogers~

Programs

Project Before @ Cheesequake

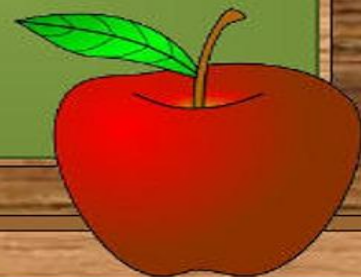
- ★ 18 Full Day Classes
- ★ 2 Self Contained
Classes

Project Before @ Selover

- ★ 16 Full Day Classes
- ★ 2 Self Contained Classes

Project Before @ Wilson

- ★ 2 Classes





Current Preschool Locations

*Acelero -Head Start
310 Augusta Street

*Garden Friends
3018 Bordentown Avenue

*The Peace Rose
3079 Bordentown Avenue

*Garden Friends on Main
172 Main Street

*Kidzland
777 Washington Road

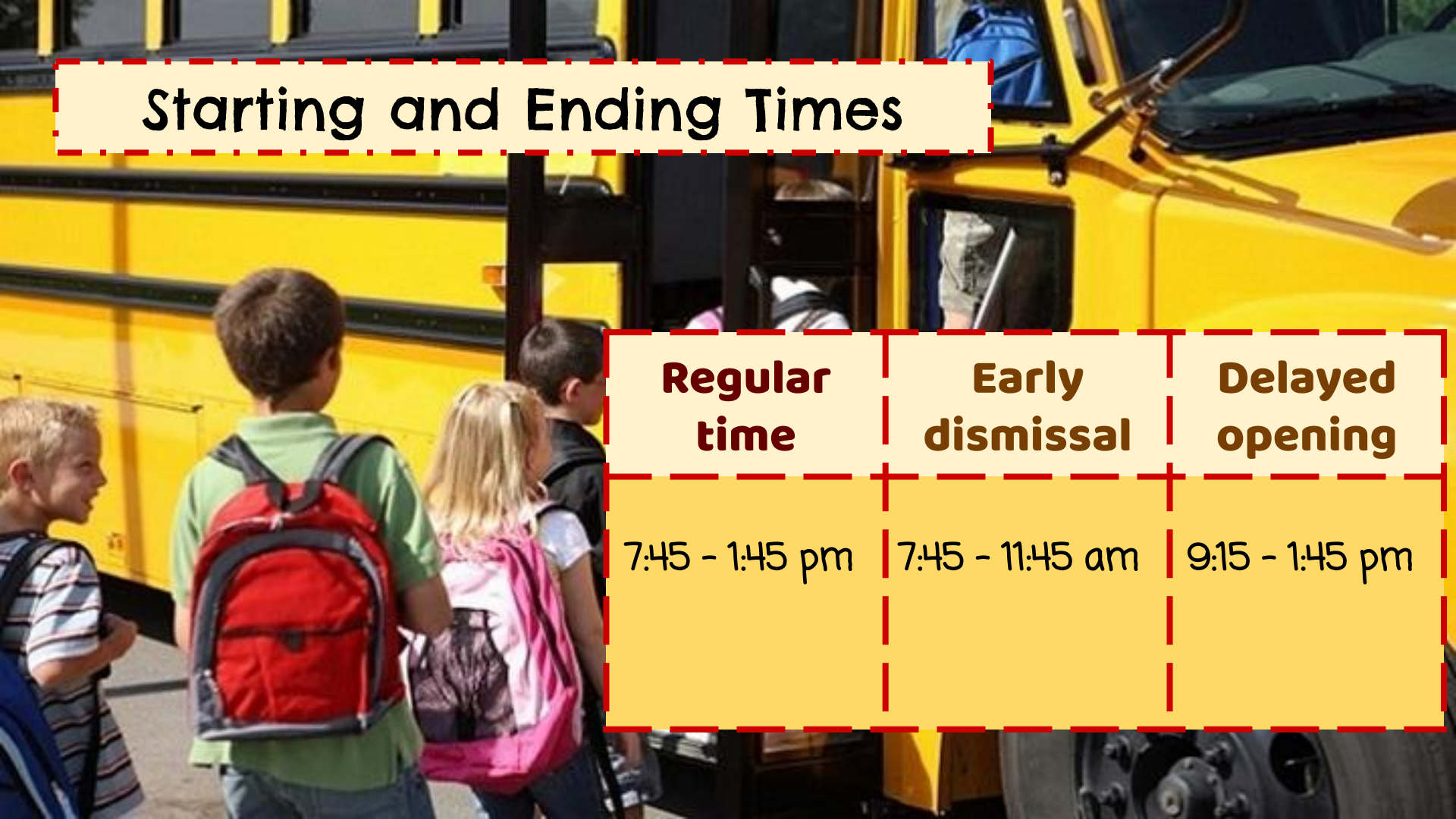


Program Operating Hours

7:45 am - 1:45 pm

- The Sayreville Early Childhood Program is a **full-time**, 6 hour-per-day program, as mandated by the NJDOE-DECE.
- The program follows the district calendar as much as possible, and operates when the public schools do.
 - This includes holidays and snow days



A yellow school bus is the background of the image. Several children with backpacks are standing near the open door of the bus, waiting to board. The scene is brightly lit, suggesting a sunny day.

Starting and Ending Times

**Regular
time**

**Early
dismissal**

**Delayed
opening**

7:45 - 1:45 pm

7:45 - 11:45 am

9:15 - 1:45 pm

Classroom Requirements & Support Staff

Each classroom has:

- One P-3 (Preschool-3rd grade) certified teacher
- 1 Paraprofessional
- Maximum of 15 Students

And is supported by:

- Preschool Instructional Coach (PIC)
PICs coach teachers on the development of pedagogy and practice to affect student outcomes.
- Preschool Intervention & Referral Team (PIRT)
PIRT members coach teachers on the development of social-emotional practice to affect student outcomes.



A green chalkboard on a wooden easel. The text 'Additional Support Staff Include' is written in black. To the left of the text are colorful letters 'A', 'B', and 'C'. To the right are colorful numbers '1', '2', and '3'.

**Additional
Support Staff
Include**

****Program Director**

****Principals**

****Supervisors of Early Childhood**

****Family Advocates**

****Community and Parent Involvement
Specialist**

****School Nurse**

****Child Study Team**

****OT/PT/Speech Therapists**

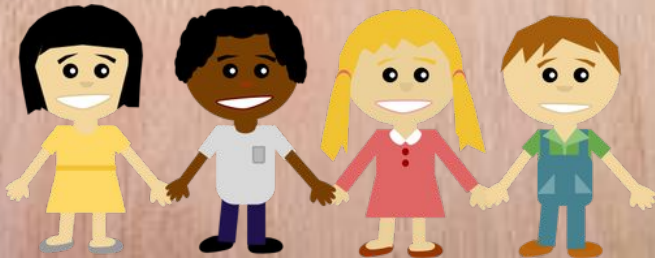
****School Social Worker**



Tentative Daily Schedule

7:45 Arrival/Free Choice/Breakfast
8:00 Opening Group
8:30 Play Planning & Make Believe Play
9:30 Am Snack
9:45 Small Group Literacy
10:00 Specials (STEAM, Music, Art)
10:40 Large Group Read Aloud
11:10 Lunch

11:40 Rest Time
12:25 Small Group Math/Science
12:45 Free Choice Play
1:00 Gross Motor (outdoor play)
1:30 Closing Group Activity
1:45 Dismissal





Program Curriculum: Tools of the Mind

CENTRAL FOCUS:

The development of cognition and social-emotional self-regulation.

CURRICULUM GOAL:

To help students acquire a set of mental tools that foster school readiness and enhance academic success by using small-group instruction to promote:

- Self-regulation
- Focused attention
- Deliberate memory
- Symbolic thinking
- Early literacy
- Early numeracy

Research-based program

One of four approved curricula recommended by the NJDOE-DECE

Differentiated instruction model allows teachers to provide challenges and/or support where needed to ensure classroom success of all learning abilities.

What does a typical day look like?

The typical preschool day contains a balance of small-group and large-group activities, including fine and gross motor skill development, while allowing time for routines, such as eating and toileting.

- The daily schedules contain the same basic components, but may vary in the sequence of the day so that everyone has access to the playground, outside areas and bathrooms without overcrowding.






Screenings and Assessments

Early Screening Inventory - 3

- ★ Children are screened with the ESI-3 upon entering the program and by the teacher.
- ★ This screening gauges several developmental domains and assists in identifying children in need of additional assistance.

Tools of the Mind Assessments

- ★ In a Tools classroom there are daily assessments, as well as assessments that occur once a month, and then three times a year--beginning, middle, and end of the year.
- 

How are parents informed of their child's progress?



- ❖ Screening information is shared with parents at Parent/teacher Conference.

- ❖ Parents may ask their child's teacher for information regarding the child's performance in the classroom at any time.

- ❖ As part of our effort to promote the home-school connection, 4 out of 5 Play Plans are sent home at the end of the week.


Do the students go outside?

It is very important for children at this age to be physically active and to develop their gross motor skills.

In accordance with the *Early Childhood Licensing* requirements, children go outside daily, unless there is active precipitation, extreme cold or extreme heat.

In the event the children do not get the opportunity to go outside, the teachers will conduct gross motor activities in the building's gym (if accessible), or in the classroom.

How can parents be involved in the program?

A woman with long brown hair, wearing a teal top, is smiling and looking down at a group of young children sitting around a table. The children are focused on an activity, possibly drawing or coloring. The background shows a colorful classroom environment with shelves and books.

Parents are encouraged to volunteer in their child's preschool classroom, or participate in special activities like reading a story, sharing their culture, or arts & craft activities. We also encourage you to get involved in our school's PTO.

Parent workshops are provided throughout the school year.

Attendance Counts and Matters!

Students are expected to attend school daily, unless they are ill. It is recommended that a doctor's note accompany their return if applicable.

- ★ NJDOE defines *Chronic Absenteeism* as being absent 10% of the total expected days of school. This equals 18 days and amounts to 108 hours of instruction lost.
- ★ **If a child is absent for 10 consecutive school days, your child may be removed from the program's enrollment.**
- ★ As your child nears certain milestones, you will receive notices to discuss attendance from the preschool leadership.
- ★ Lack of attendance will jeopardize your ability to participate in our program.

Please be cognizant of school calendar when planning vacations. These will be logged as absences and will be reflected on the student's school record. This will be an unexcused absence.



Sayreville Public Schools District Calendar 2024-2025

SAYREVILLE SCHOOL DISTRICT SCHOOL CALENDAR 2024-2025 *

September-24					
M	T	W	T	F	
2	3	4	5	6	
9	10	11	12	13	
16	17	18	19	20	
23	24	25	26	27	
30					

October-24					
M	T	W	T	F	
	1	2	3	4	
	8	9	10	11	
14	15	16	17	18	
21	22	23	24	25	
28	29	30	31		

November-24					
M	T	W	T	F	
				1	
4	5	6	7	8	
11	12	13	14	15	
18	19	20	21	22	
25	26	27	28	29	

December-24					
M	T	W	T	F	
2	3	4	5	6	
9	10	11	12	13	
16	17	18	19	20	
23	24	25	26	27	
30	31				

January-25					
M	T	W	T	F	
		1	2	3	
	7	8	9	10	
13	14	15	16	17	
20	21	22	23	24	
27	28	29	30	31	

September

- 2 School Closed - Labor Day
- 3-4 All Teachers Report - No students
- Early Dismissal - First Day - Students Report
- Early Dismissal

October

- 3 School Closed - Roshashana
- Early Dismissal for Students & GCN (2.5hrs) Staff

November

- 1 School Closed - Diwali
- 5 Staff In-Service Day - No Students
- 7-8 School Closed - N.J.E.A. Convention
- 11 School Closed - Veterans Day
- Early Dismissal - Thanksgiving Weekend
- 28-29 School Closed - Thanksgiving Break

December

- Early Dismissal for Students & PLC (2.5hrs) Staff
- Early Dismissal - Winter Recess
- School Closed - Christmas Eve, Christmas Day / Winter Recess

January

- 1 School Closed - New Year
- Early Dismissal for Students & PLC (2.5hrs) Staff
- 20 School Closed - Martin Luther King Day
- Early Dismissal - Parent Teacher Conferences

February

- Early Dismissal for Students & PLC (2.5hrs) Staff
- School Closed - Presidents' Day

March

- Early Dismissal for Students & PLC (2.5hrs) Staff
- School Closed - Eid al-Fitr *Subject to change

April

- 14-18 School Closed - Passover, Good Friday, Easter / Spring Recess

May

- Early Dismissal for Students & PLC (2.5hrs) Staff
- School Closed - Memorial Day

June

- 3 Staff In-Service Day - No Students
- 19 School Closed - Juneteenth
- Early Dismissal for Students
- Early Dismissal - Last day for Students
- 26 Last Day of School for Teachers

February-25					
M	T	W	T	F	
	4	5	6	7	
10	11	12	13	14	
17	18	19	20	21	
24	25	26	27	28	

March-25					
M	T	W	T	F	
	3	4	5	6	7
10	11	12	13	14	
17	18	19	20	21	
24	25	26	27	28	
31					

April-25					
M	T	W	T	F	
	1	2	3	4	
7	8	9	10	11	
14	15	16	17	18	
21	22	23	24	25	
28	29	30			

May-25					
M	T	W	T	F	
				1	2
				8	9
5	6	7	8	9	
12	13	14	15	16	
19	20	21	22	23	
26	27	28	29	30	

June-25					
M	T	W	T	F	
	2	3	4	5	6
9	10	11	12	13	
16	17	18	19	20	
27	28	29	30		

	Schools Closed
	Staff Report-No Students
	First day
	Last day
	Shortened day

* Please note Calendar dates may change due to emergency closings.

Note: (3) days have been built into the calendar in the event that schools are closed for any unanticipated reason. If they are not used they will be deducted from the last day of school. If there are additional closings for unanticipated reasons, calendar changes will be made in the following order: January 20th will be a half day for students, February 17th will be a full day for students, and full days for students will be taken from Spring Break beginning with April 14th and moving sequentially forward.

Number of possible days:
184 - Students
183 - Teachers

BOE Approved:
April 16, 2024

Before & After School Care



- Before and after school care is offered at all preschool locations.
- Once your child is assigned a classroom, the provider will contact you, during the summer, to fill out the paperwork and set up the care that you need.
- Leading Edge will be available at Cheesequake and Selover.

****Leading Edge information...**

For Additional Information



Mrs. Audrey Burns, *Director of Early Childhood Curriculum & Instruction*
(732)525-5200 x5260 audrey.burns@sayrevillek12.net

Ms. Linette Mercado, *Project Before Administrative Assistant*
(732)525-5200 ext.1401 linnette.mercado@sayrevillek12.net