



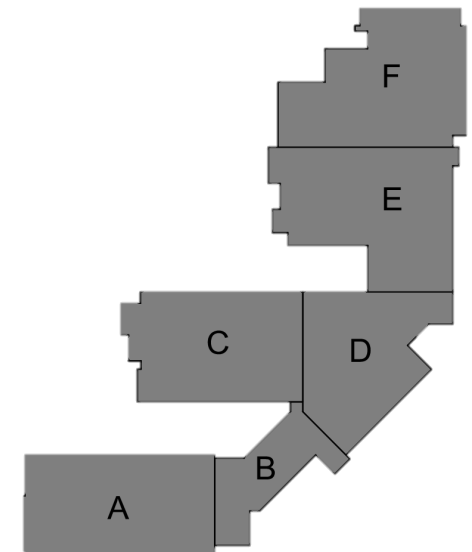
# Mary E. Britton Middle School

## ➤ **Completed/Work in Progress:**

- Installing Down Spout Leaders
- Complete Stair C1
- Continue MCM and Batten Seam Panels Area C and A
- Continue Exterior Furring at Area B
- Continue Sheet Air Barrier Area A and Area C
- Continue Window Frame Installation
- Finish Tile Area A2 and Continue Terrazzo Area A 2<sup>nd</sup> Floor to 95%
- Continue Installing Equipment at Area E
- Continue Electrical Rough In, Panel Make Up and Pulling Wire
- Continue Exterior Electrical Lighting and Conduits

## ➤ **Upcoming Look Ahead:**

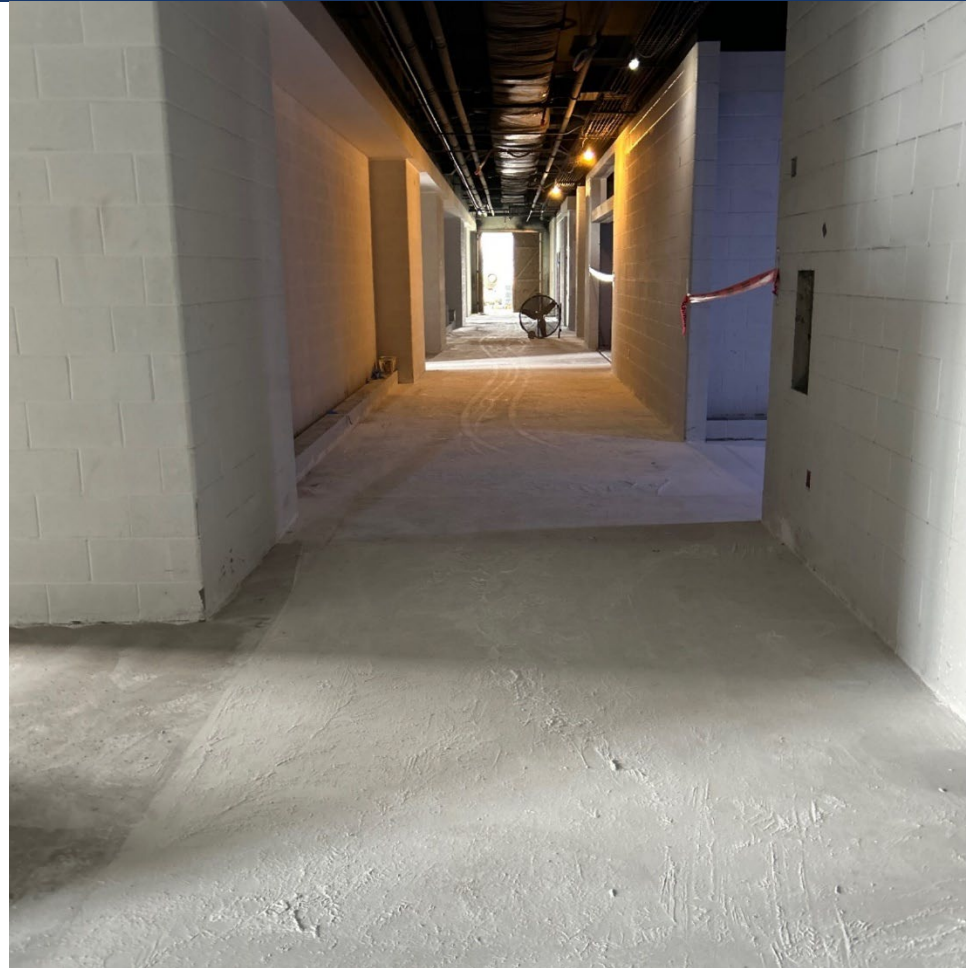
- Continue Stone Reservoir and Base for Permeable Paving
- Continue Prep for Mobilization 3 of Curb and Gutter
- Rough Grading at Entrance Slopes
- Receive Area B Stairs. Start Install
- Start Installing Curtain Wall windows Area A and C
- Continue MCM and Batten Seam Panels Area A
- Finish Hanging Sheetrock Area B
- Start Installing Ceiling Grid Area A First Floor
- Continue HVAC Room Drops



# Mary E. Britton Middle School



Area A – Prep Slab for Terrazzo on 2<sup>nd</sup> Floor



Week Ending September 6, 2024

# Mary E. Britton Middle School



## Area A – Window Frames in Brick



Week Ending September 6, 2024



# Mary E. Britton Middle School



Area B – Drywall is Beginning in the Corridor



# Mary E. Britton Middle School



## Area C- Elevator Machine Room Equipment Set





# Mary E. Britton Middle School

## Area C – Stair Install



Week Ending September 6, 2024



# Mary E. Britton Middle School

## Area C – Vertical Metal Panels Continue





# Mary E. Britton Middle School

Area D – Block Fill Complete in Strom Shelter



Week Ending September 6, 2024





# Mary E. Britton Middle School

## Area F – Kitchen Soffit Framing



Week Ending September 6, 2024