

BROWNS POINT ELEMENTARY SCHOOL

ARRIVAL AND DISMISSAL PLAN

LEGEND		GUIDELINES	
	Bus zone only - <i>No cars</i>		Drop-off & Pick-up line
	School crosswalks		No parking or waiting
	ADA parking only		Walker group crossings
	Do not enter driveway		Bicycle parking

FOLLOW THE LAW TO KEEP EVERYONE SAFE

Many families walk & roll to school! 🚶 Drive **20 mph or less** in the school zone and on all streets around Browns Point (RCW 46.61.440)

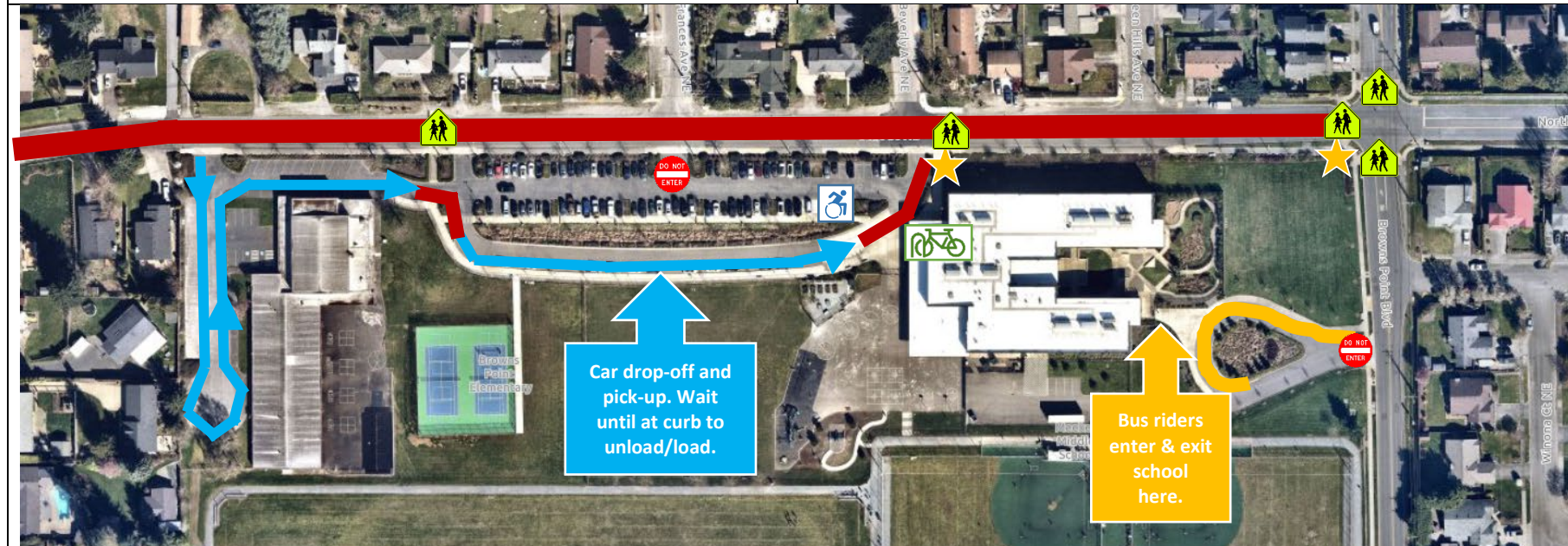
Stop for people trying to cross the street and watch for students walking and rolling (RCW 46.61.235).

Do not park within 30 ft of intersections, 20 ft of crosswalks, or block driveways when parking – even for a minute (RCW 46.61.570).

GUIDELINES

- **Arrival: Please do not bring your child to school before 8:50 AM (9:50 AM on Wednesdays).** There is no supervision for students beforehand. Students enter the playground gates at the front of the building unless they ride the bus.
- **Dismissal is at 3:30 PM.**
- **If driving your student to/from school, you may either:**
 1. Legally park in the neighborhood. Wait for your student to cross the street. Wait across the street from either Walker 1 (in front of the school) or Walker 2 (corner of 51st Street NE & Browns Pt. Blvd) crosswalks. ★
 2. Use the car line. If this line is full, you must park in the neighborhood and walk to pick up your student. **The line cannot extend past our driveway. Do not wait in the street, even in the center lane.**

Walk, bike, or scooter to school to reduce traffic congestion & improve air quality!



ARRIVAL & DISMISSAL: TIPS for DRIVERS



Drop-off & Pick-up

- Follow your school's arrival and dismissal plan and guidelines.
- Drive 20 mph or less in the school zone.
- Load and unload only in designated areas, not in the middle of the street.
- Help to keep air healthier around schools—do not idle your car while waiting.



Parking

- Follow street parking signage, including time-limited regulations.
- Do not park in a crosswalk or within 20 feet of a crosswalk.
- Do not double park or block driveways. Give driveways 5 feet on each side.
- Do not park within 30 feet of a stop sign or within 15 feet of a fire hydrant.



School Buses

- If the yellow or red lights are flashing and the arm is extended, all traffic must stop.
- The area 10 feet around a school bus is the most dangerous for children; stop far enough back to allow them space.
- Be alert. Children may be unpredictable when entering and exiting buses.



Pedestrians

- Stop for people crossing the street. Remember—every intersection is a crosswalk whether it is marked or not.
- Always follow a crossing guard's instructions. Stop when they hold up a flag.
- Never pass a vehicle stopped for people crossing the street.
- Yield to people walking when entering or exiting driveways.



Bicyclists

- When passing a person riding a bike, proceed slowly and leave a minimum of 3 feet between your vehicle and the bicyclist.
- Check your side mirrors or do the "Dutch Reach" before opening your door.
- Watch for people biking coming from driveways or behind parked cars.

Walk, bike, or carpool to reduce traffic and pollution around schools, or park a few blocks away and walk the short distance to school.

More tips available at: cityoftacoma.org/SRTS

