

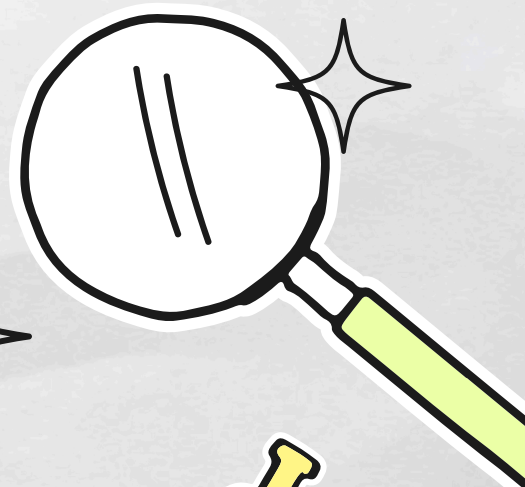
KRISLE ELEMENTARY SCHOOL PARENT & FAMILY ENGAGEMENT POLICY



KRISLE ELEMENTARY

Amanda Miglore, Principal
Danielle Holden, Assistant
Principal

6712 Highway 49 East
Springfield, -TN. 37172
(615)384-2596



FAMILY RESOURCE CENTER

700 Bransford Dr.
Springfield, TN. 37172
Open Monday-Friday
8:00 am- 4:00 pm

School Social Worker: Sara
Evans



When students, schools, families, and
communities come together - we CAN
achieve our goals!

SCHOOL PLAN FOR SHARED SCHOLAR ACHIEVEMENT

What is it?

This is a plan that describes how Krisle Elementary will provide opportunities to improve family engagement to support scholar learning. Krisle Elementary values the contributions and involvement of families to establish an equal partnership for the common goal of improving scholar achievement. This plan describes the different ways that Krisle Elementary will support family engagement and how families can help plan and participate in activities and events to promote student learning at school and at home.

WHO IS IT FOR?

All students participating in the Title I, Part A program, and their families are encouraged and invited to participate in the opportunities described in this plan. Krisle Elementary will provide full opportunity for the participation of parents and family members with limited English, with disabilities, and of migratory children.

WHERE IS IT AVAILABLE?

At the beginning of the year, the plan will be given to all students. The plan will also be posted on the school website and social media. Families can also retrieve a copy of the plan in the front office of the school.

HOW IS IT REVISED?

Krisle Elementary School invited families to attend our Annual Title I Parent meeting on October 29, 2024 to review and revise this parent and family engagement policy, as well as the school improvement plan, our school-parent compact, and the family engagement budget.

Additionally, family input and comments regarding this plan are welcome during the school year. The plan is posted on our school website for families to view and submit feedback throughout the year. All feedback received during the year will be used to revise the plan for the next school year.

We also distribute an annual survey online and on paper to ask parents for their suggestions on the plan and the use of funds for family engagement. Families can also give feedback during several meetings and activities during the school year.



SCHOOL GOALS

In the 2024-2025 school year, Krisle Elementary School will increase the percentage of students scoring "Met" or "Exceeded" in ELA and Math for all students and in each of the accountability subgroups, resulting in the achievement of school Success Rate AMOs.

Particularly, the percentage of third grade students who score "Met" or "Proficient" on ELA TCAP will increase from 27.8% to 32.29%.

·By supporting students physically, socially, emotionally, behaviorally, and culturally, Krisle Elementary School will increase the amount of time that students are receiving high-quality, classroom instruction by decreasing chronic absenteeism by 5% and reducing student incidents, including assignments of in-school and out-of-school suspension, in PowerSchool by 5%.

·Krisle Elementary School will retain 95% of teachers for the upcoming 2025-2026 school year.

DISTRICT GOALS

-In the 2024-2025 school year, Robertson County Schools will increase the percentage of students scoring "Met" or "Exceeded" in ELA and Math for all students and in each of the accountability subgroups, resulting in the achievement of district Success Rate AMOs.

Particularly, the percentage of third grade students who score "Met" or "Proficient" on ELA TCAP will increase from 30.3% to 34.8%.

-Robertson County Schools will meet or exceed the growth standard in reading and math for all students and for those in each of the accountability subgroups.

-The goal for 2024 - 2025 is to reduce that percentage to 21 percent of K-2 students scoring below the 25th percentile in reading (composite) and 14 percent of K-2 students below the 25th percentile in math.

·By supporting students physically, socially, emotionally, behaviorally, and culturally, Robertson County Schools will increase the amount of time that students are receiving high-quality, classroom instruction by decreasing chronic absenteeism by 5% and reducing student incidents, including assignments of in-school and out-of-school suspension, in PowerSchool by 5%.

PARENT & FAMILY ENGAGEMENT

Krisle Elementary believes that family engagement means the participation of parents and family members in regular two-way, and meaningful communication involving student academic learning and other school activities, including ensuring:

- That parents play an integral role in assisting their child's learning.
- That parents are encouraged to be actively involved in their child's education at school.
- That parents are full partners in their child's education and are included, as appropriate, in decision-making and on advisory committees to assist in the education of their child.

As part of this plan, Krisle Elementary and our families will develop a school-parent compact. A compact is a written agreement that families, teachers, and students jointly develop to explain how everyone will work together to ensure all students reach grade-level standards. The compact will be reviewed and updated annually based on feedback from families, students, and teachers during various events and the annual Title I Parent Meeting. The school-parent compacts are also displayed in each classroom, are shared with parents during parent-teacher conferences, are posted on our school website (<https://kes.rcstn.net/>) and extra copies are always available in the front office.

If you would like to provide feedback on the compact any time during the year, please contact Amanda Miglore at (615)384-2596 or amanda.miglore@rcstn.net

KRISLE ELEMENTARY WILL TAKE THE FOLLOWING MEASURES TO EMPOWER AND SUPPORT PARENTS AND FAMILY MEMBERS AS AN IMPORTANT FOUNDATION OF OUR SCHOOL TO STRENGTHEN THE SCHOOL AND REACH OUR GOALS

- TREAT ALL SCHOLARS IN A CARING AND RESPECTFUL MANNER.
- PROVIDE MEANINGFUL, EFFECTIVE LEARNING OPPORTUNITIES TO ALL SCHOLARS THROUGH HIGH QUALITY CURRICULUM AND INSTRUCTION.
- PROVIDE A SAFE AND SUPPORTIVE PLACE FOR CHILDREN AND ADULTS. COMMUNICATE ABOUT SCHOLAR PROGRESS THROUGHOUT THE YEAR USING CLASS DOJO, EMAILS, PHONE CALLS, NEWSLETTERS, AND POWERSCHOOL.
- INFORM PARENTS/GUARDIANS ABOUT CHANGES WITHIN THE SCHOOL.
- ENCOURAGE SCHOLARS TO REACH THEIR FULL POTENTIAL IN A POSITIVE WAY AND DISTRIBUTE HOUSE POINTS TO ENCOURAGE POSITIVE BEHAVIOR.
- ENSURE THAT ALL INFORMATION RELATED TO SCHOOL AND FAMILY PROGRAMS, MEETINGS, AND OTHER ACTIVITIES IS PUBLISHED IN BOTH ENGLISH AND SPANISH; POSTED ON THE SCHOOL WEBSITE; AND INCLUDED IN THE MONTHLY GRADE-LEVEL NEWSLETTERS FOR ALL FAMILIES.
- COMMUNICATE WITH ALL FAMILIES AND THE COMMUNITY ON A REGULAR BASIS REGARDING SCHOOLWIDE EVENTS AND ACTIVITIES, THROUGH PHONE MESSAGES, OUR WEBSITE, SOCIAL MEDIA, AND FLYERS.
- WORK WITH OUR FAMILIES TO DEVELOP RELEVANT TRAININGS AND HELPFUL PRESENTATIONS TO EDUCATE OUR STAFF ON THE IMPORTANCE OF PARENT AND FAMILY ENGAGEMENT AND HOW TO SUPPORT STUDENT LEARNING.
- PROVIDE NECESSARY MATERIALS AND HANDOUTS FOR PARENTS AT CONFERENCES, MEETINGS, AND ACTIVITIES TO HELP PARENTS WORK WITH THEIR CHILD TO IMPROVE THEIR CHILD'S ACHIEVEMENT.
- COLLECT FEEDBACK FROM PARENTS AND FAMILY MEMBERS AT ALL EVENTS



Krisle Elementary School will host the following events to build capacity for strong family engagement and support a partnership among the school, families, and the community to improve student academic achievement

- Krisle Family Cultural Activities: Quarterly activities to encourage a fun learning experience about other cultures.
- Annual Title 1 Meeting: October 29, 2024
- Quarterly PTO Meetings
- Parent Teacher Conferences: September 12, 2024 & Spring 2025
- Cookies with Claus: December 2024
- School Dance: Spring 2024

LET'S GET TOGETHER!



SCHOOL COMMUNITY TEAM

_____ Yes, I am interested and wish to join the School Community Team.

_____ Please contact me so I can learn more about joining the School Community Team.

_____ Please send me notifications about future meetings and updates.

Name: _____

Child's Name and Grade Level: _____

Address: _____

Phone Number: _____

Email Address: _____

SHARE YOUR THOUGHTS

We want to hear from you! If you have any suggestions or if there is any part of this policy that you feel is not satisfactory with the students' and the school's goals for academic achievement, please provide us with your comments in the space provided and leave this form in the front office:

Name (optional): Phone Number(optional):

Comments: