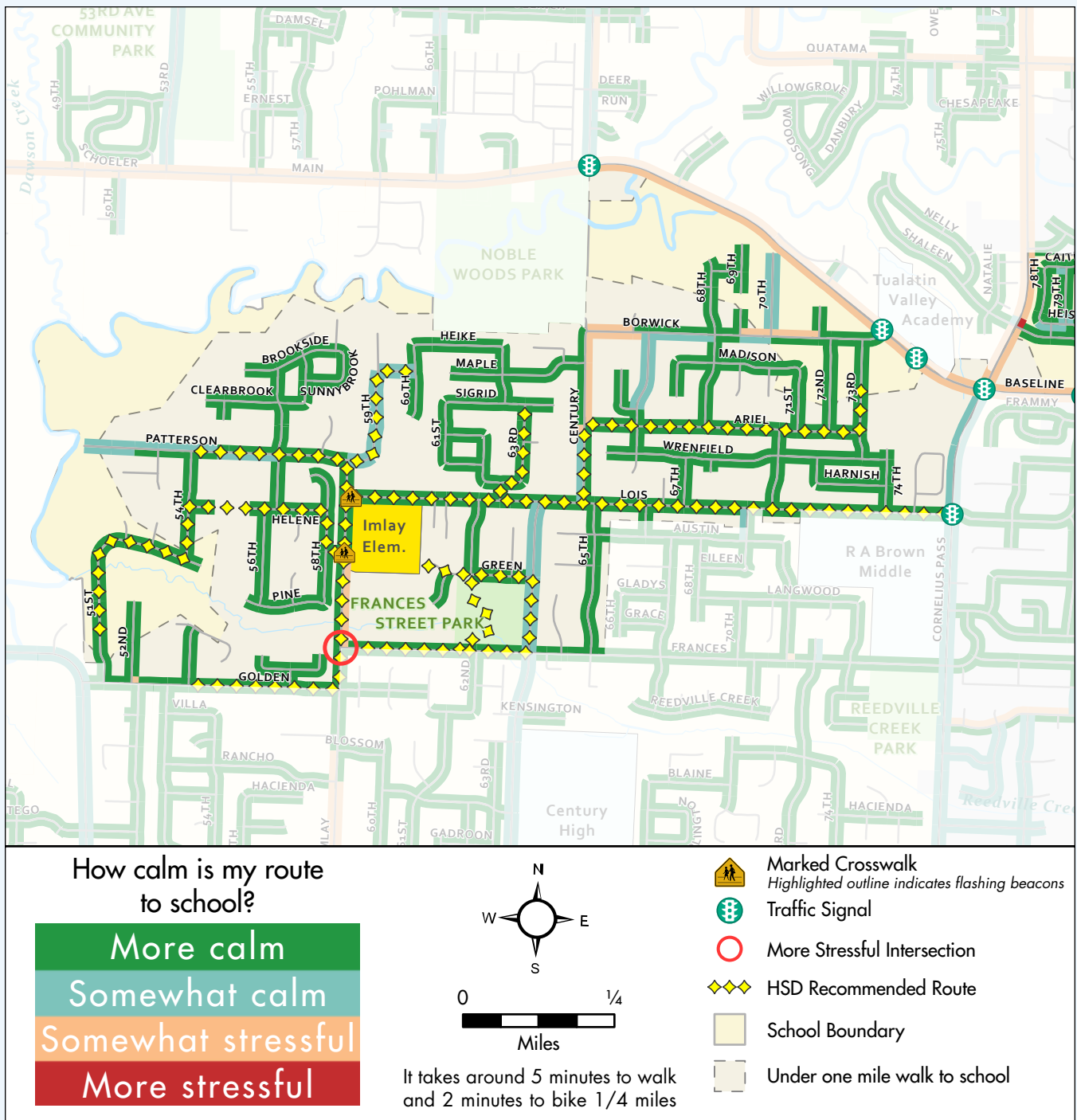


Imlay Elementary

School Map

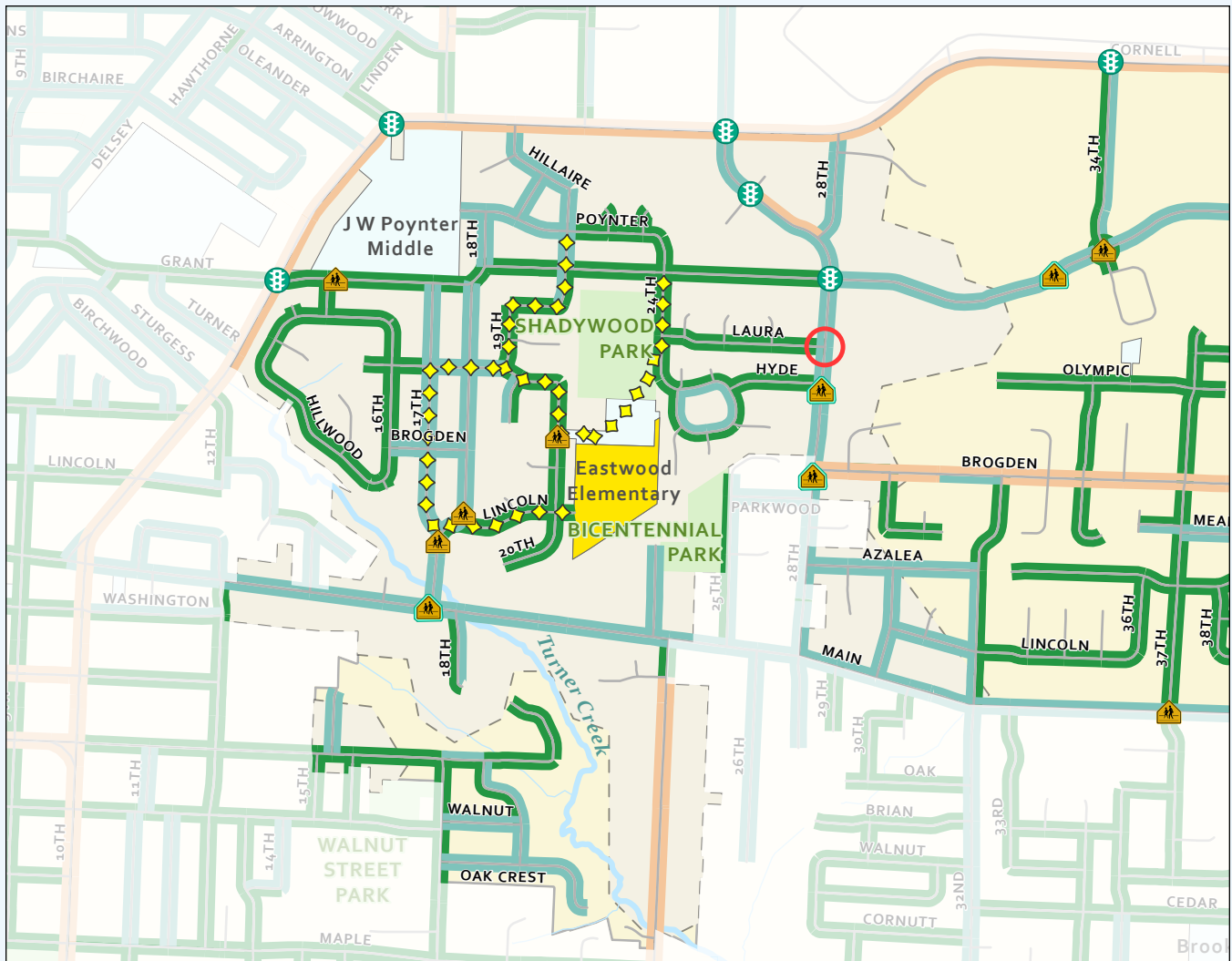


The information presented in this map is intended to support adults and students walking and rolling to school. This includes the Hillsboro School District (HSD) recommended routes. Adults are responsible for choosing the most appropriate route for their children. The calmness of a route is based on a combination of traffic volume and amount of sidewalk available along each street. The calmest route options have less vehicle traffic and more complete sidewalks. Some sidewalks may not have curb ramps. Please cross at signalized intersections and at marked crosswalks when available. For more information on route and intersection determination, please see our methodology summary on the main SRTS site.

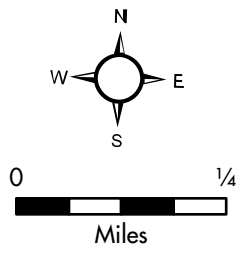
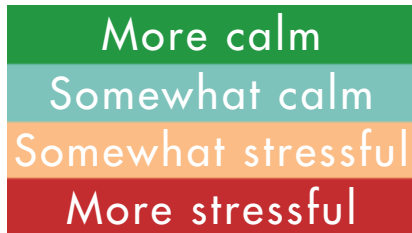


Eastwood Elementary

School Map



How calm is my route to school?



It takes around 5 minutes to walk and 2 minutes to bike 1/4 miles

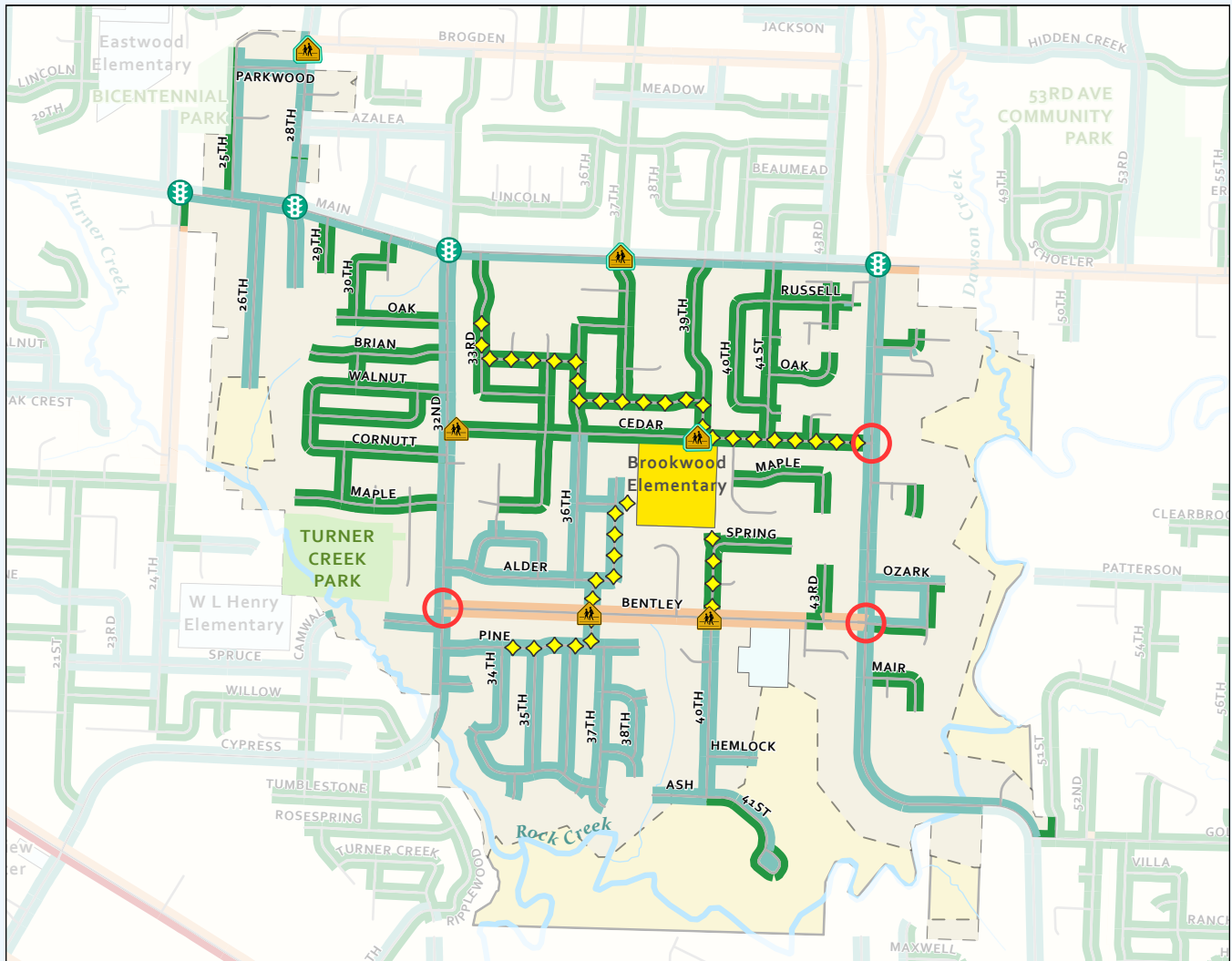
- Marked Crosswalk
Highlighted outline indicates flashing beacons
- Traffic Signal
- More Stressful Intersection
- HSD Recommended Route
- School Boundary
- Under one mile walk to school

The information presented in this map is intended to support adults and students walking and rolling to school. This includes the Hillsboro School District (HSD) recommended routes. Adults are responsible for choosing the most appropriate route for their children. The calmness of a route is based on a combination of traffic volume and amount of sidewalk available along each street. The calmest route options have less vehicle traffic and more complete sidewalks. Some sidewalks may not have curb ramps. Please cross at signalized intersections and at marked crosswalks when available. For more information on route and intersection determination, please see our methodology summary on the main SRTS site.

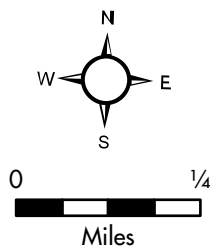
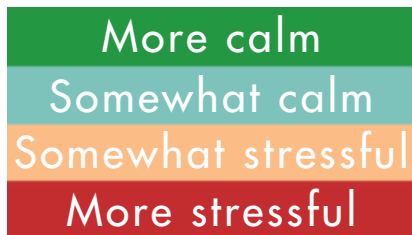


Brookwood Elementary

School Map



How calm is my route to school?



It takes around 5 minutes to walk and 2 minutes to bike 1/4 miles

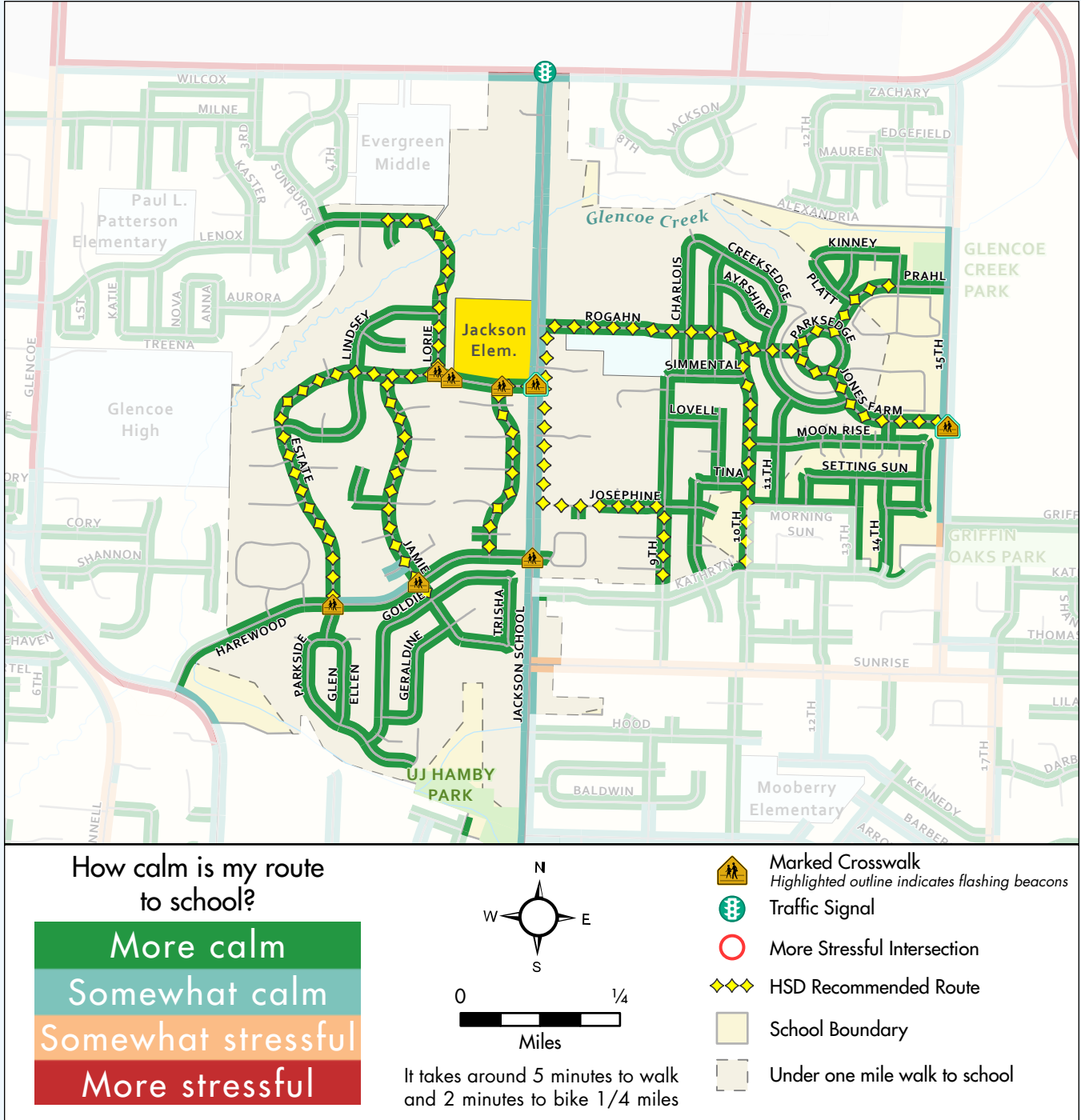
- Marked Crosswalk
Highlighted outline indicates flashing beacons
- Traffic Signal
- More Stressful Intersection
- HSD Recommended Route
- School Boundary
- Under one mile walk to school

The information presented in this map is intended to support adults and students walking and rolling to school. This includes the Hillsboro School District (HSD) recommended routes. Adults are responsible for choosing the most appropriate route for their children. The calmness of a route is based on a combination of traffic volume and amount of sidewalk available along each street. The calmest route options have less vehicle traffic and more complete sidewalks. Some sidewalks may not have curb ramps. Please cross at signalized intersections and at marked crosswalks when available. For more information on route and intersection determination, please see our methodology summary on the main SRTS site.



Jackson Elementary

School Map

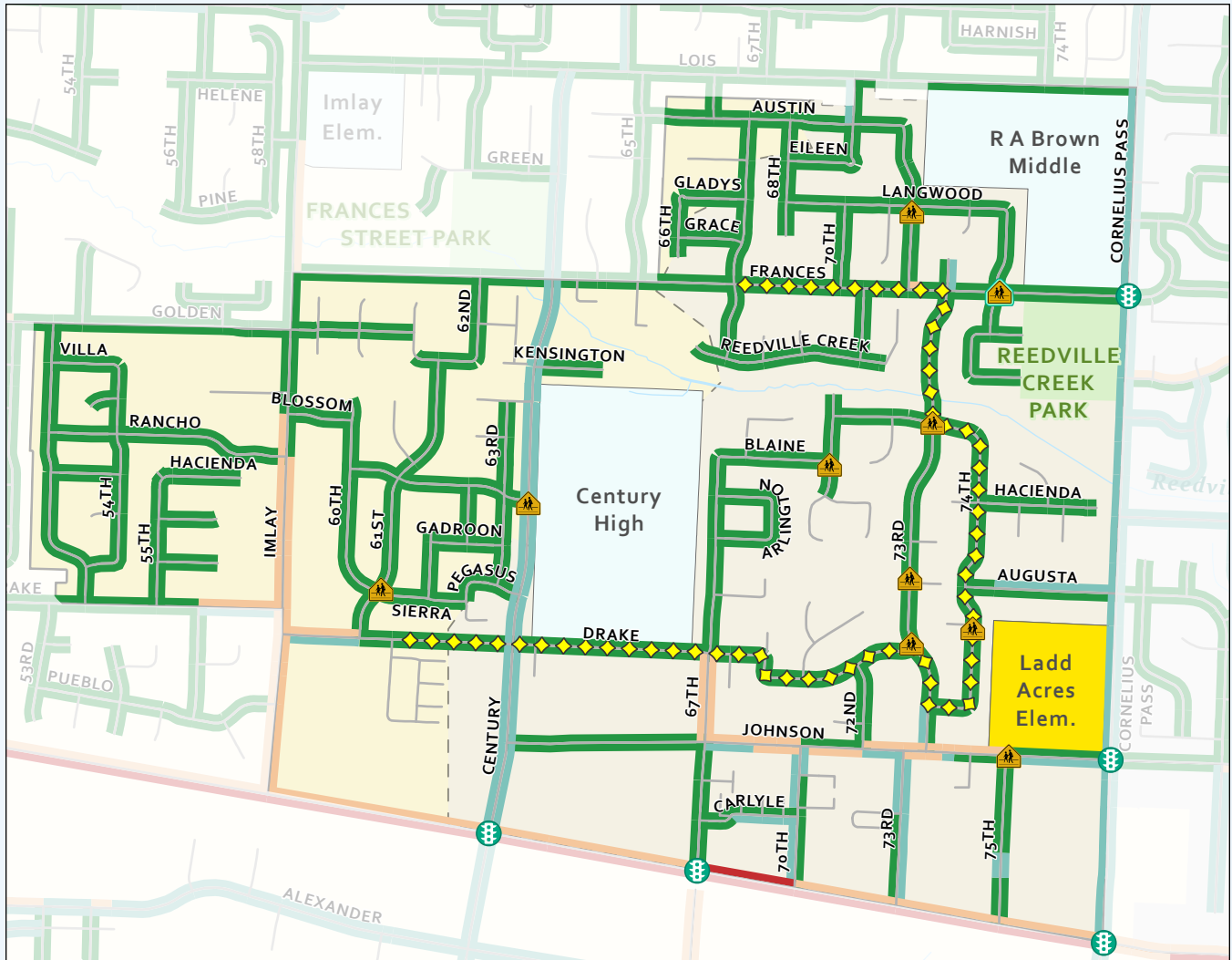


The information presented in this map is intended to support adults and students walking and rolling to school. This includes the Hillsboro School District (HSD) recommended routes. Adults are responsible for choosing the most appropriate route for their children. The calmness of a route is based on a combination of traffic volume and amount of sidewalk available along each street. The calmest route options have less vehicle traffic and more complete sidewalks. Some sidewalks may not have curb ramps. Please cross at signalized intersections and at marked crosswalks when available. For more information on route and intersection determination, please see our methodology summary on the main SRTS site.

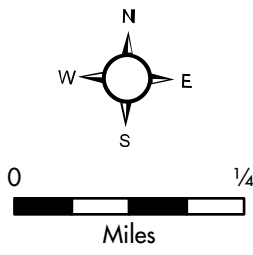
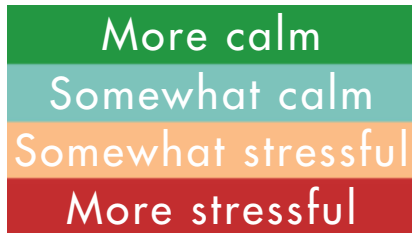


Ladd Acres Elementary

School Map



How calm is my route to school?



It takes around 5 minutes to walk and 2 minutes to bike 1/4 miles

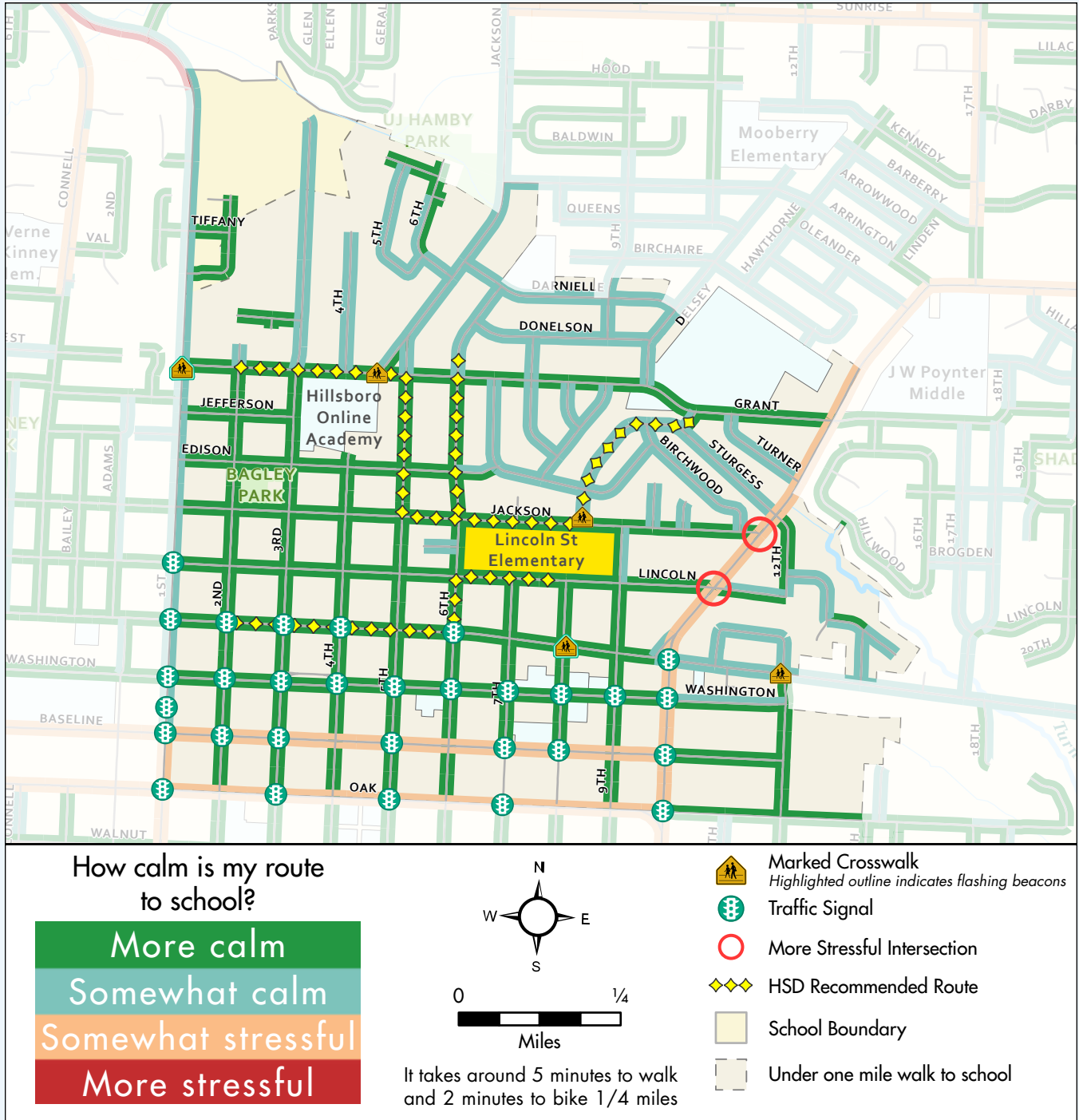
- Marked Crosswalk
Highlighted outline indicates flashing beacons
- Traffic Signal
- More Stressful Intersection
- HSD Recommended Route
- School Boundary
- Under one mile walk to school

The information presented in this map is intended to support adults and students walking and rolling to school. This includes the Hillsboro School District (HSD) recommended routes. Adults are responsible for choosing the most appropriate route for their children. The calmness of a route is based on a combination of traffic volume and amount of sidewalk available along each street. The calmest route options have less vehicle traffic and more complete sidewalks. Some sidewalks may not have curb ramps. Please cross at signalized intersections and at marked crosswalks when available. For more information on route and intersection determination, please see our methodology summary on the main SRTS site.



Lincoln Street Elementary

School Map

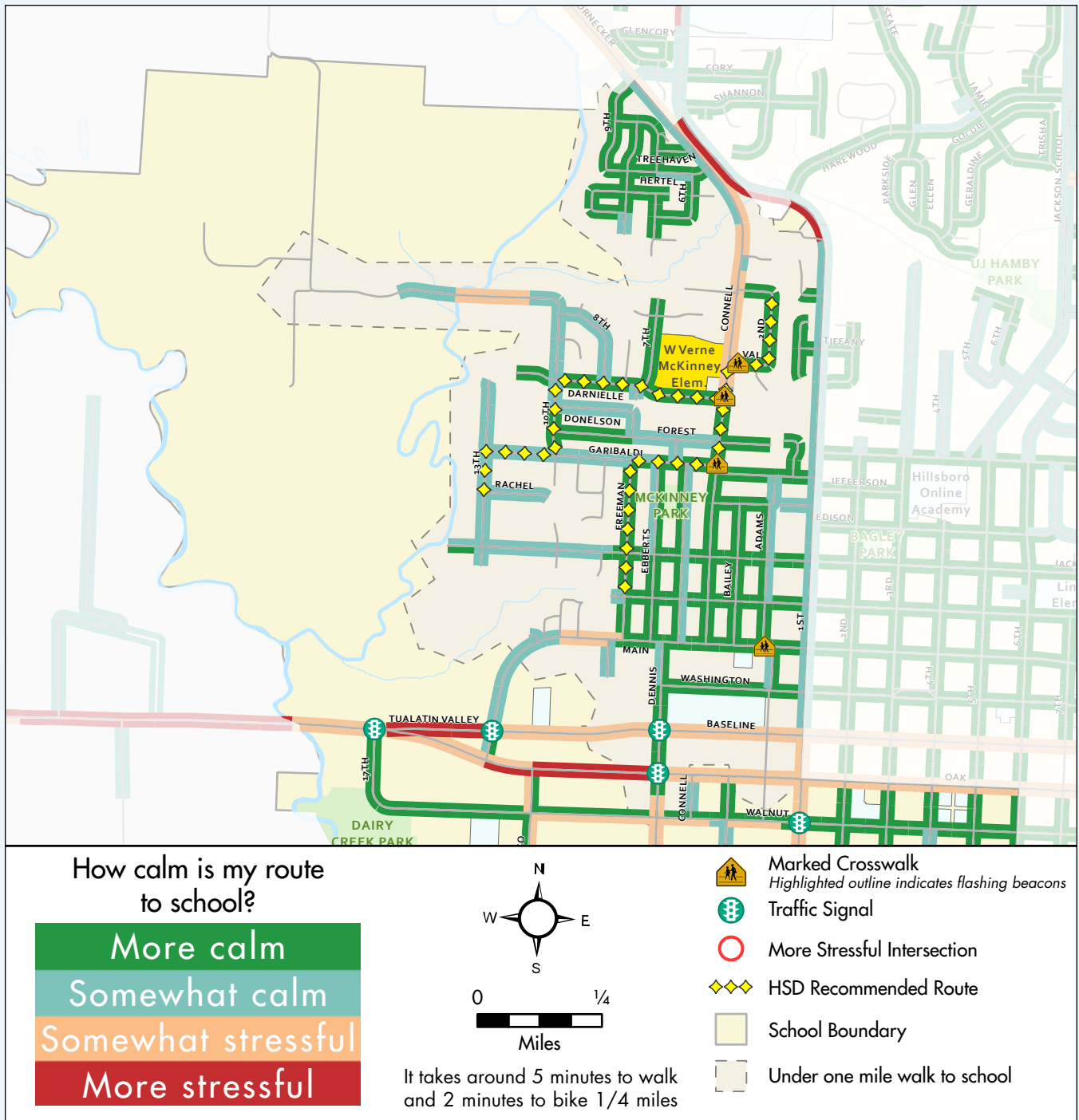


The information presented in this map is intended to support adults and students walking and rolling to school. This includes the Hillsboro School District (HSD) recommended routes. Adults are responsible for choosing the most appropriate route for their children. The calmness of a route is based on a combination of traffic volume and amount of sidewalk available along each street. The calmest route options have less vehicle traffic and more complete sidewalks. Some sidewalks may not have curb ramps. Please cross at signalized intersections and at marked crosswalks when available. For more information on route and intersection determination, please see our methodology summary on the main SRTS site.



W. Verne McKinney Elementary

School Map

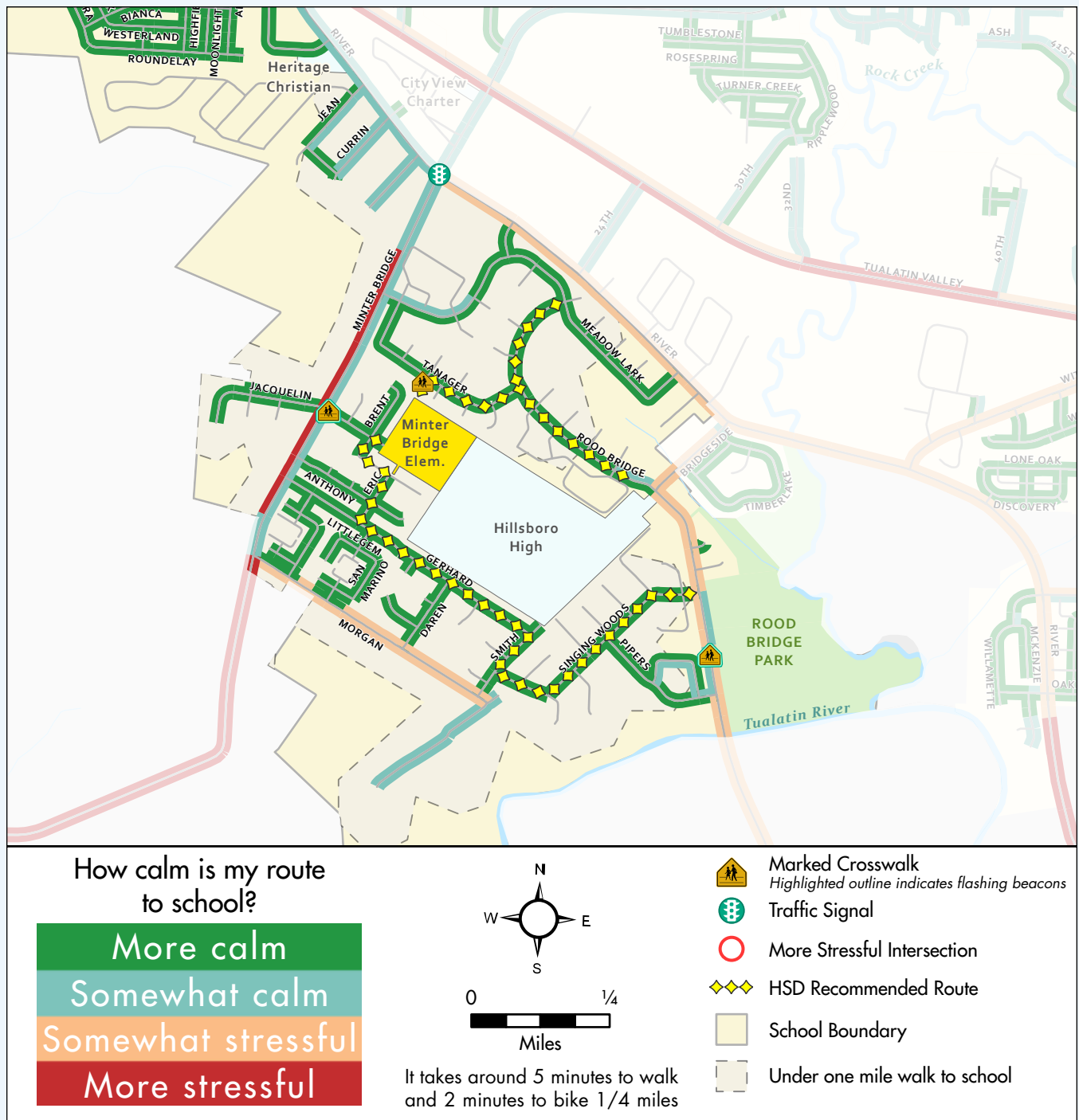


The information presented in this map is intended to support adults and students walking and rolling to school. This includes the Hillsboro School District (HSD) recommended routes. Adults are responsible for choosing the most appropriate route for their children. The calmness of a route is based on a combination of traffic volume and amount of sidewalk available along each street. The calmest route options have less vehicle traffic and more complete sidewalks. Some sidewalks may not have curb ramps. Please cross at signalized intersections and at marked crosswalks when available. For more information on route and intersection determination, please see our methodology summary on the main SRTS site.



Minter Bridge Elementary

School Map

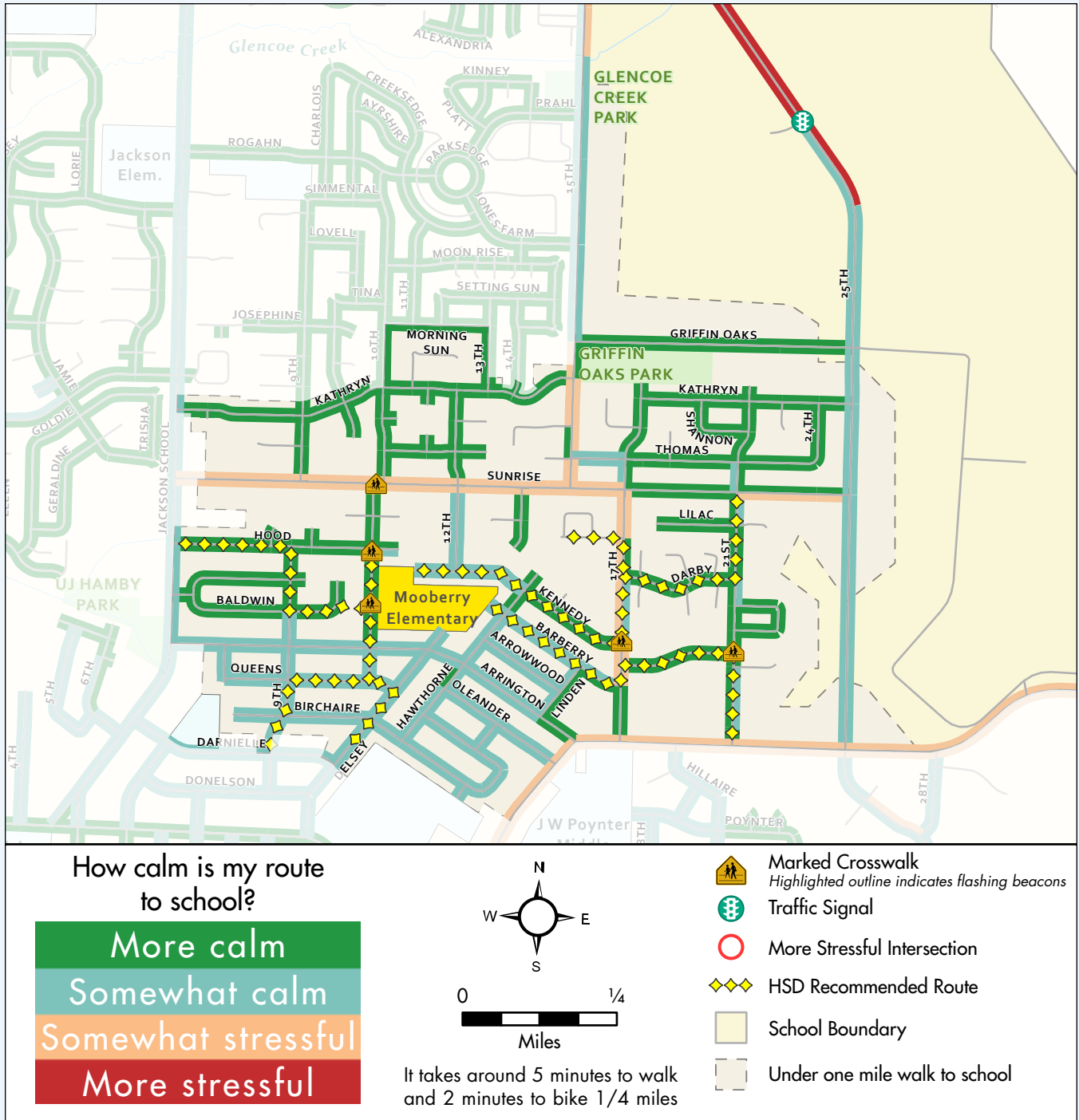


The information presented in this map is intended to support adults and students walking and rolling to school. This includes the Hillsboro School District (HSD) recommended routes. Adults are responsible for choosing the most appropriate route for their children. The calmness of a route is based on a combination of traffic volume and amount of sidewalk available along each street. The calmest route options have less vehicle traffic and more complete sidewalks. Some sidewalks may not have curb ramps. Please cross at signalized intersections and at marked crosswalks when available. For more information on route and intersection determination, please see our methodology summary on the main SRTS site.



Mooberry Elementary

School Map

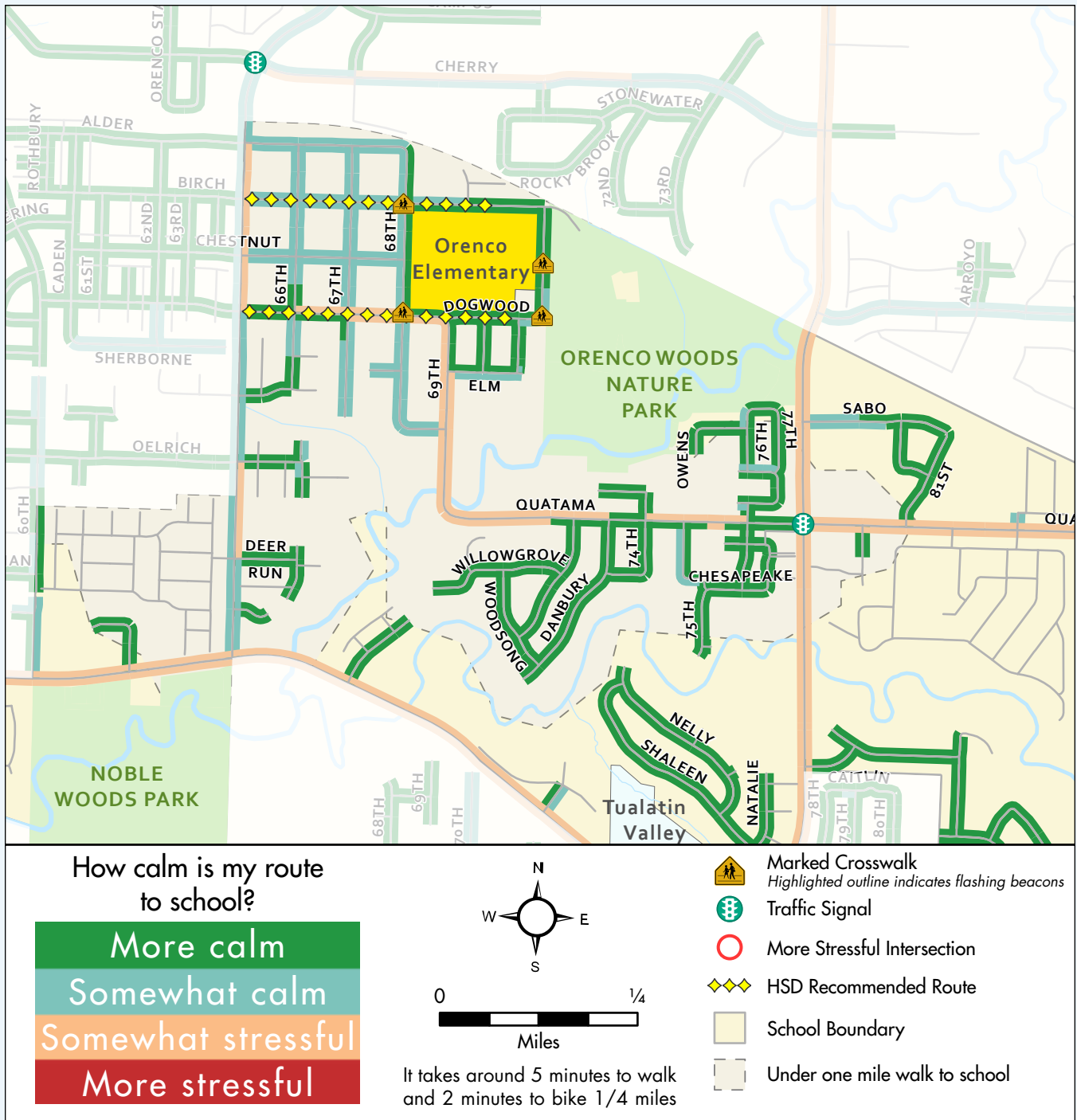


The information presented in this map is intended to support adults and students walking and rolling to school. This includes the Hillsboro School District (HSD) recommended routes. Adults are responsible for choosing the most appropriate route for their children. The calmness of a route is based on a combination of traffic volume and amount of sidewalk available along each street. The calmest route options have less vehicle traffic and more complete sidewalks. Some sidewalks may not have curb ramps. Please cross at signalized intersections and at marked crosswalks when available. For more information on route and intersection determination, please see our methodology summary on the main SRTS site.



Orengo Elementary

School Map

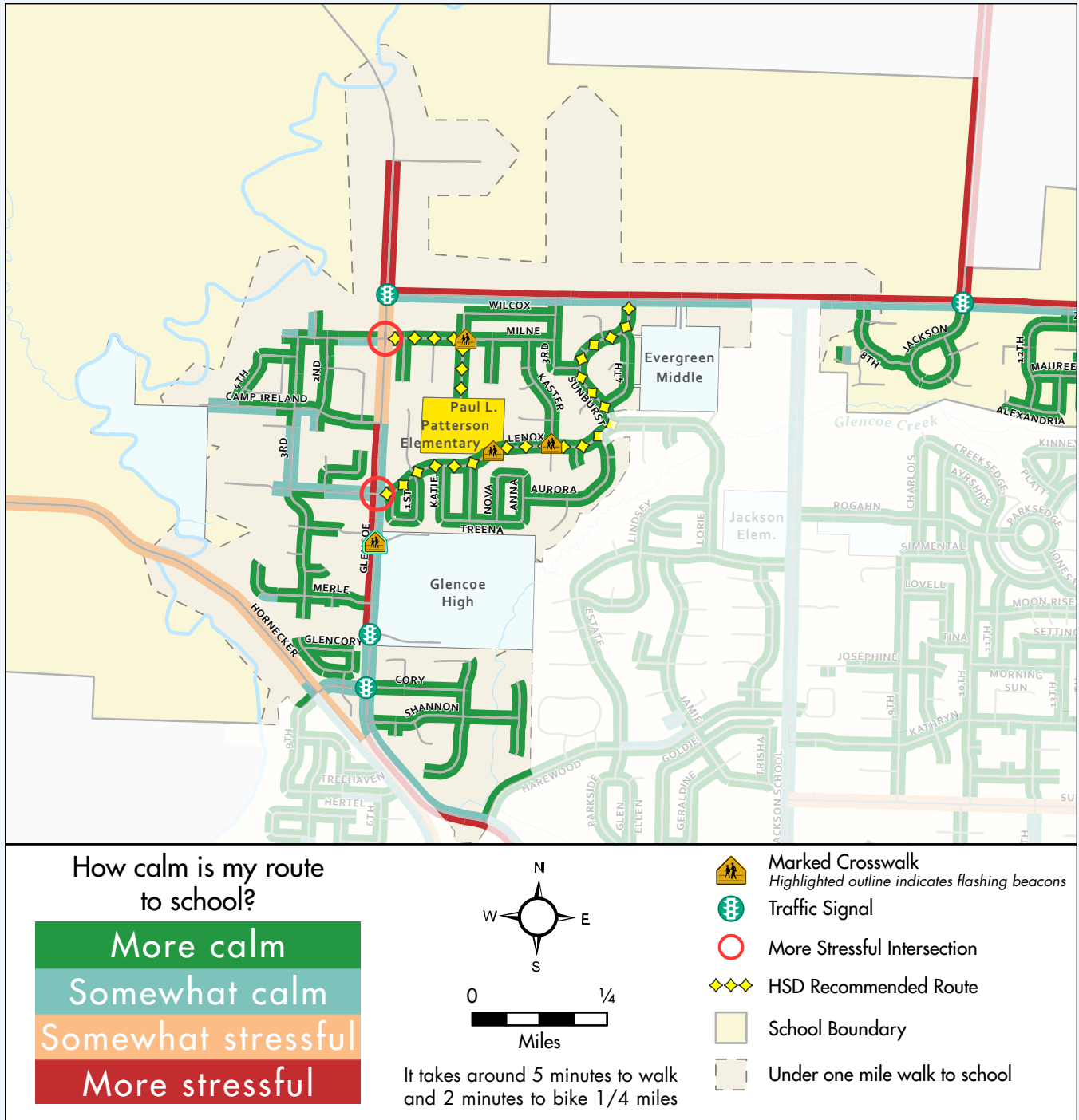


The information presented in this map is intended to support adults and students walking and rolling to school. This includes the Hillsboro School District (HSD) recommended routes. Adults are responsible for choosing the most appropriate route for their children. The calmness of a route is based on a combination of traffic volume and amount of sidewalk available along each street. The calmest route options have less vehicle traffic and more complete sidewalks. Some sidewalks may not have curb ramps. Please cross at signalized intersections and at marked crosswalks when available. For more information on route and intersection determination, please see our methodology summary on the main SRTS site.



Paul L. Patterson Elementary

School Map

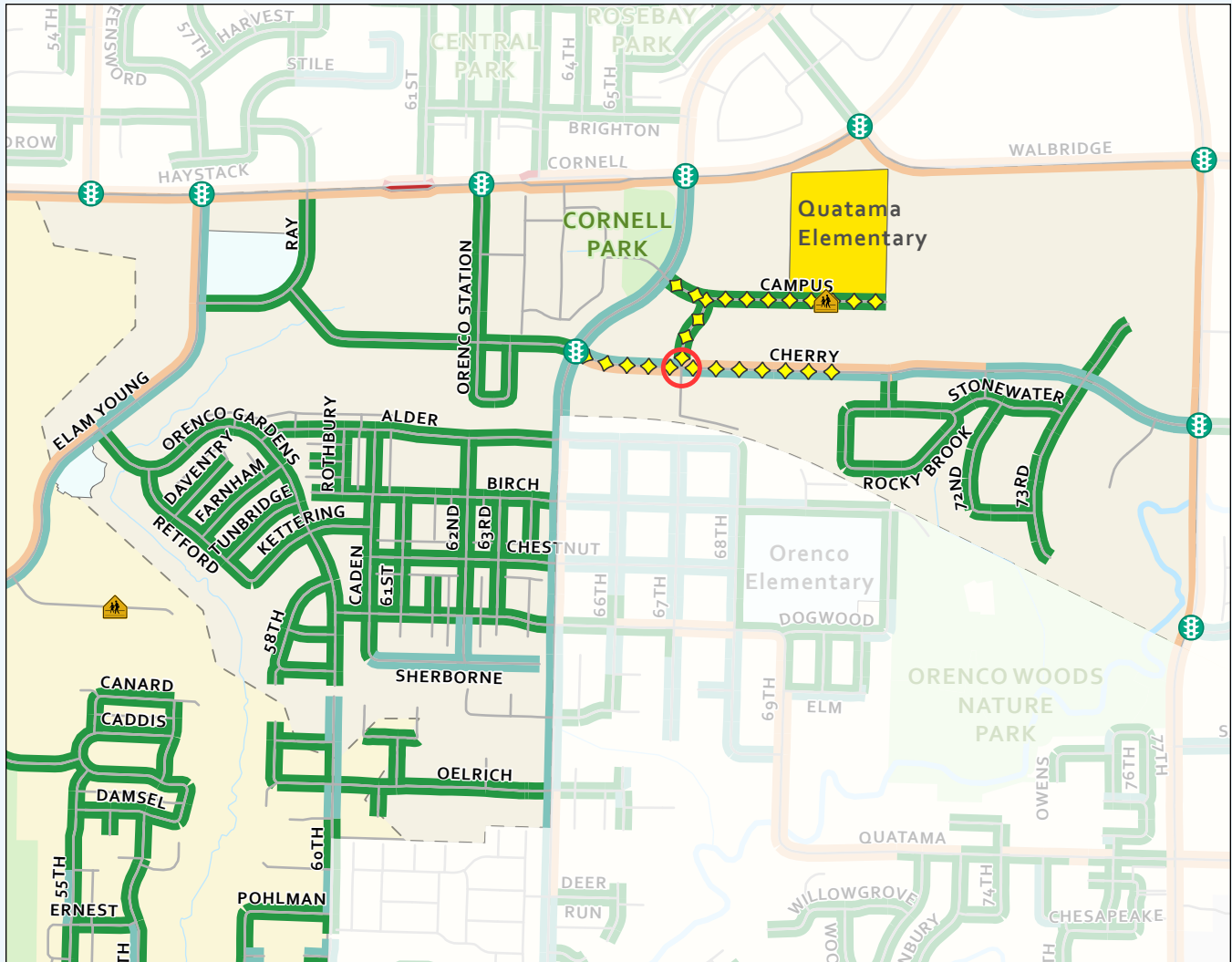


The information presented in this map is intended to support adults and students walking and rolling to school. This includes the Hillsboro School District (HSD) recommended routes. Adults are responsible for choosing the most appropriate route for their children. The calmness of a route is based on a combination of traffic volume and amount of sidewalk available along each street. The calmest route options have less vehicle traffic and more complete sidewalks. Some sidewalks may not have curb ramps. Please cross at signalized intersections and at marked crosswalks when available. For more information on route and intersection determination, please see our methodology summary on the main SRTS site.

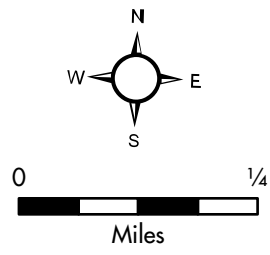
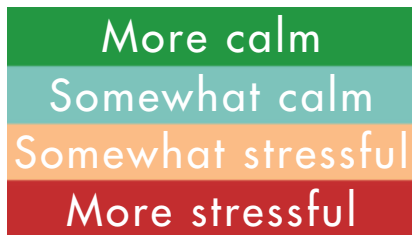


Quatama Elementary

School Map



How calm is my route to school?



It takes around 5 minutes to walk and 2 minutes to bike 1/4 miles

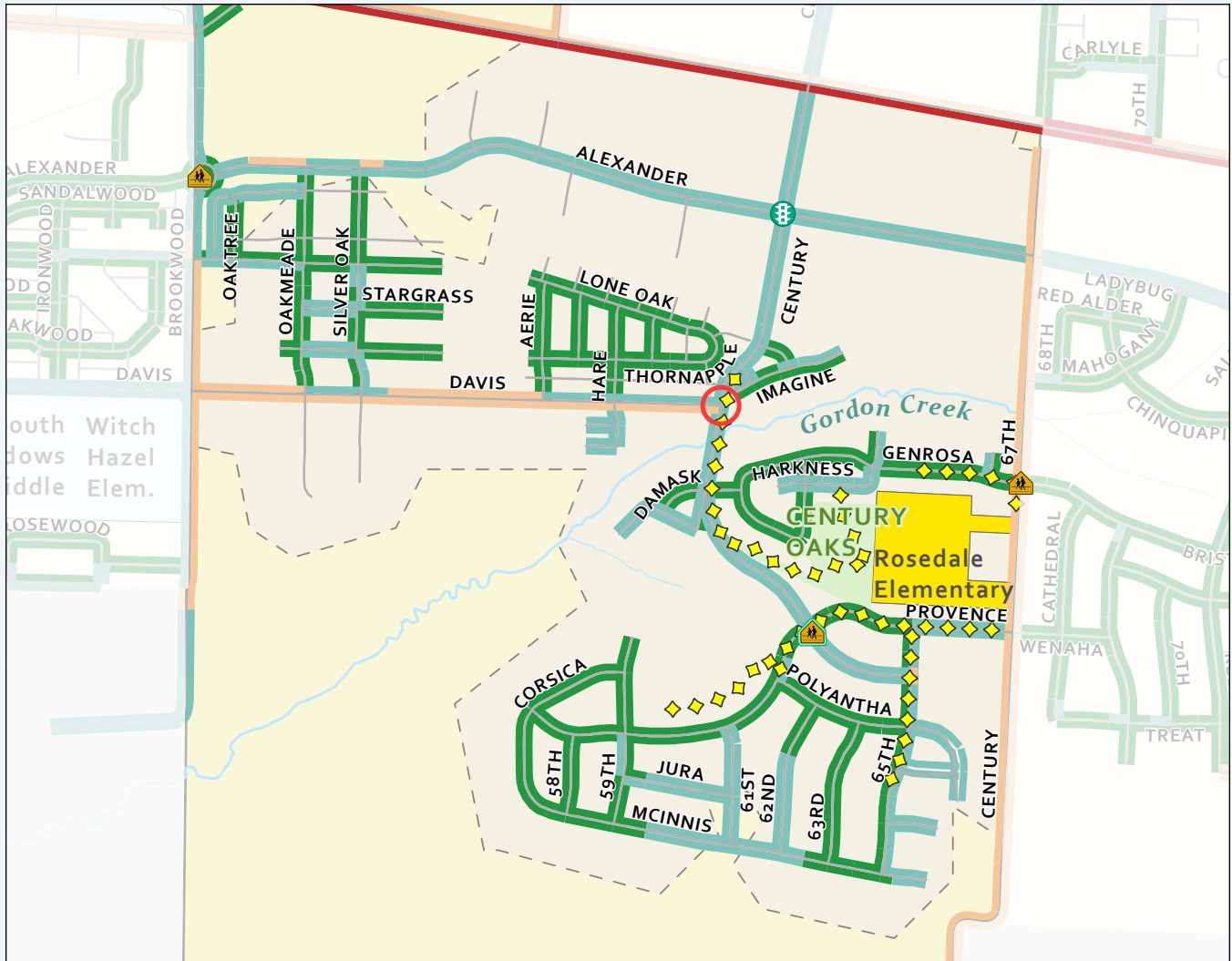
- Marked Crosswalk
Highlighted outline indicates flashing beacons
- Traffic Signal
- More Stressful Intersection
- HSD Recommended Route
- School Boundary
- Under one mile walk to school

The information presented in this map is intended to support adults and students walking and rolling to school. This includes the Hillsboro School District (HSD) recommended routes. Adults are responsible for choosing the most appropriate route for their children. The calmness of a route is based on a combination of traffic volume and amount of sidewalk available along each street. The calmest route options have less vehicle traffic and more complete sidewalks. Some sidewalks may not have curb ramps. Please cross at signalized intersections and at marked crosswalks when available. For more information on route and intersection determination, please see our methodology summary on the main SRTS site.

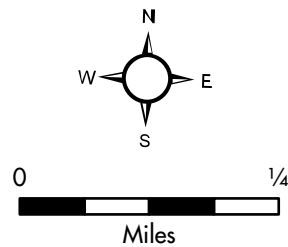
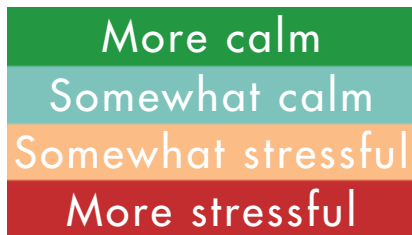


Rosedale Elementary

School Map



How calm is my route to school?



It takes around 5 minutes to walk and 2 minutes to bike 1/4 miles

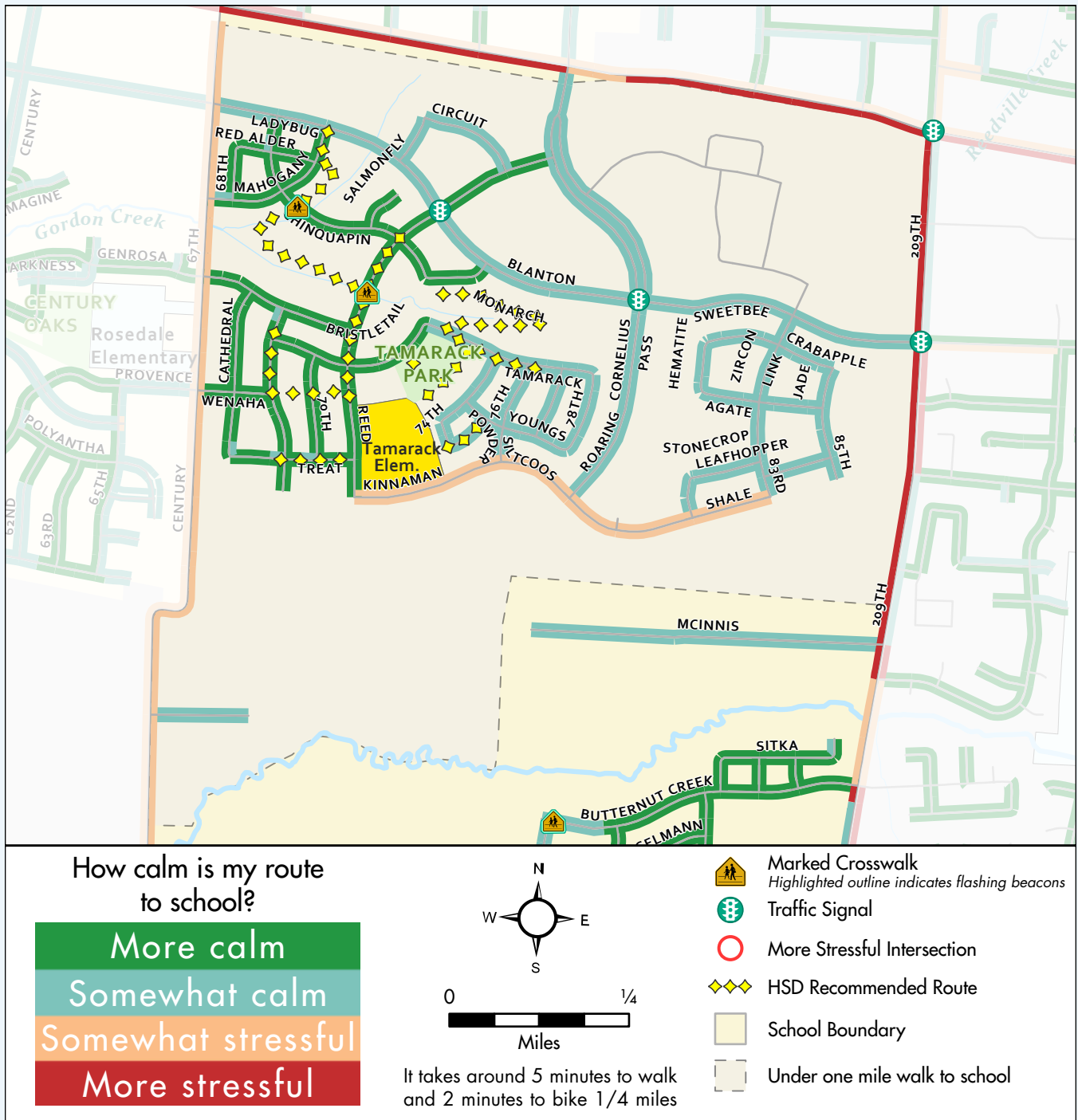
- Marked Crosswalk
Highlighted outline indicates flashing beacons
- Traffic Signal
- More Stressful Intersection
- HSD Recommended Route
- School Boundary
- Under one mile walk to school

The information presented in this map is intended to support adults and students walking and rolling to school. This includes the Hillsboro School District (HSD) recommended routes. Adults are responsible for choosing the most appropriate route for their children. The calmness of a route is based on a combination of traffic volume and amount of sidewalk available along each street. The calmest route options have less vehicle traffic and more complete sidewalks. Some sidewalks may not have curb ramps. Please cross at signalized intersections and at marked crosswalks when available. For more information on route and intersection determination, please see our methodology summary on the main SRTS site.



Tamarack Elementary

School Map

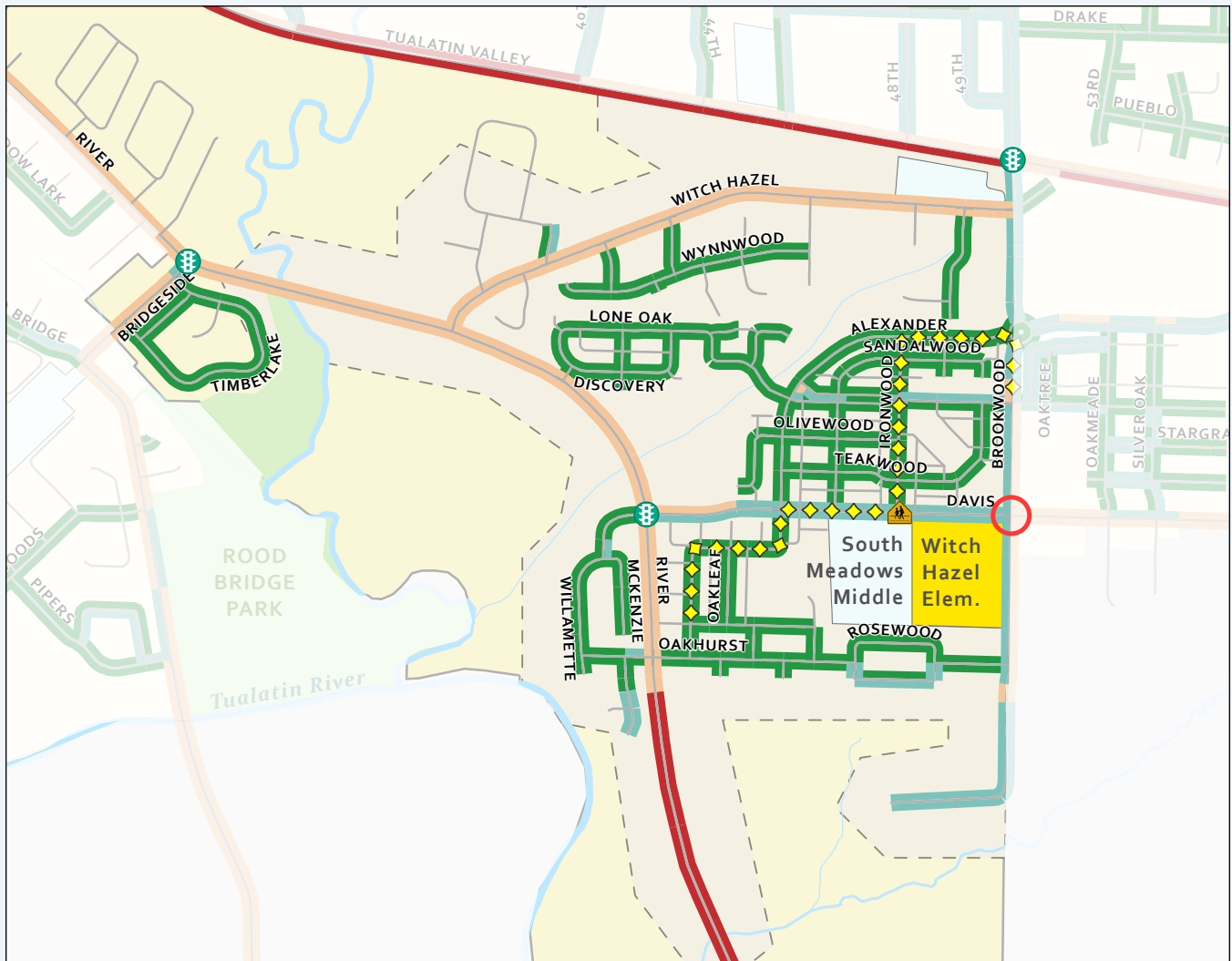


The information presented in this map is intended to support adults and students walking and rolling to school. This includes the Hillsboro School District (HSD) recommended routes. Adults are responsible for choosing the most appropriate route for their children. The calmness of a route is based on a combination of traffic volume and amount of sidewalk available along each street. The calmest route options have less vehicle traffic and more complete sidewalks. Some sidewalks may not have curb ramps. Please cross at signalized intersections and at marked crosswalks when available. For more information on route and intersection determination, please see our methodology summary on the main SRTS site.

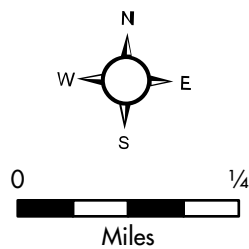


Witch Hazel Elementary

School Map



How calm is my route to school?



It takes around 5 minutes to walk and 2 minutes to bike 1/4 miles

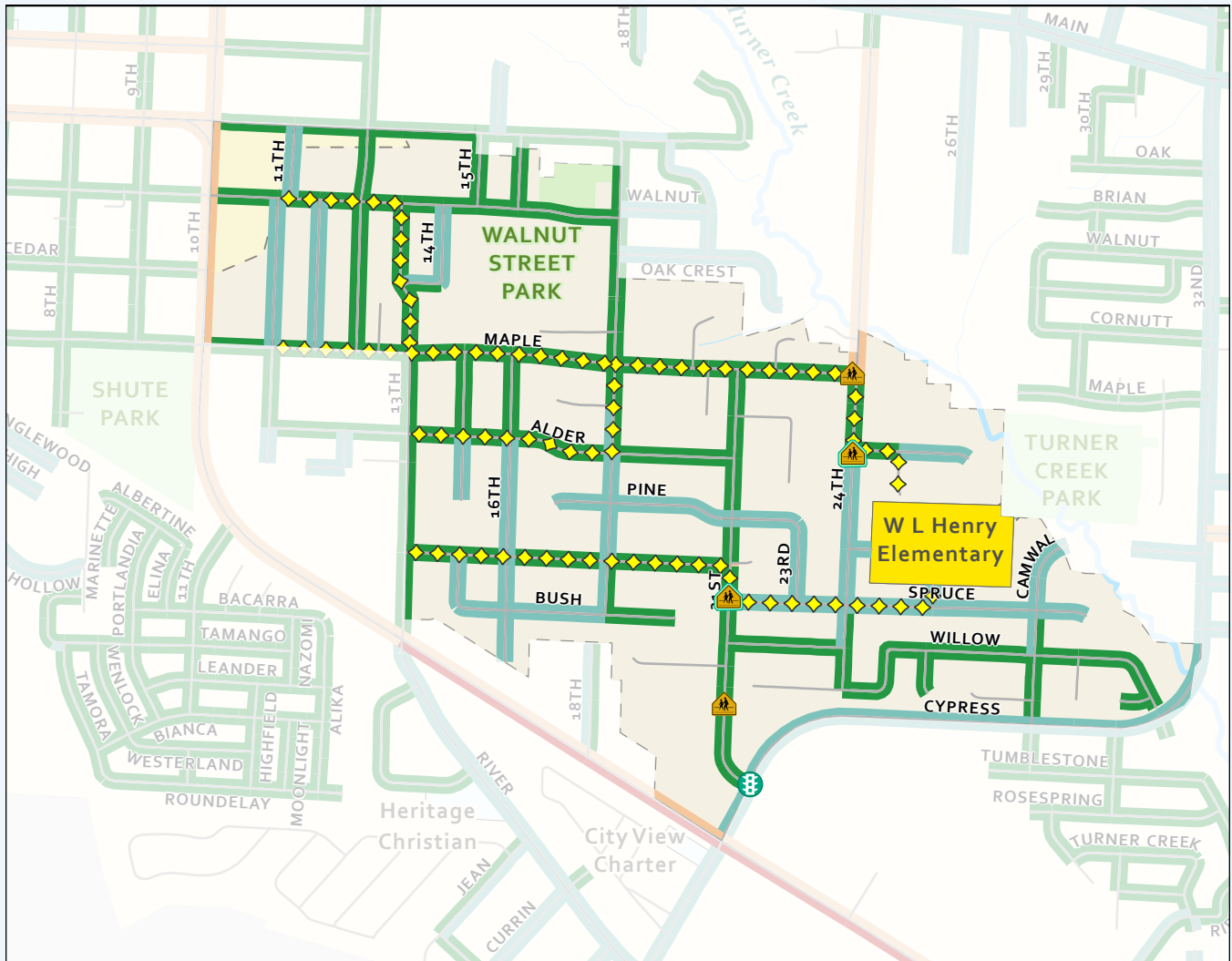
- Marked Crosswalk
Highlighted outline indicates flashing beacons
- Traffic Signal
- More Stressful Intersection
- HSD Recommended Route
- School Boundary
- Under one mile walk to school

The information presented in this map is intended to support adults and students walking and rolling to school. This includes the Hillsboro School District (HSD) recommended routes. Adults are responsible for choosing the most appropriate route for their children. The calmness of a route is based on a combination of traffic volume and amount of sidewalk available along each street. The calmest route options have less vehicle traffic and more complete sidewalks. Some sidewalks may not have curb ramps. Please cross at signalized intersections and at marked crosswalks when available. For more information on route and intersection determination, please see our methodology summary on the main SRTS site.

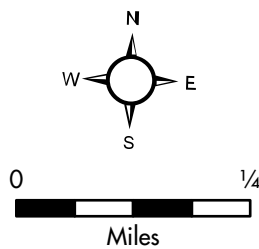


W.L. Henry Elementary

School Map



How calm is my route to school?



It takes around 5 minutes to walk and 2 minutes to bike 1/4 miles

- Marked Crosswalk
Highlighted outline indicates flashing beacons
- Traffic Signal
- More Stressful Intersection
- HSD Recommended Route
- School Boundary
- Under one mile walk to school

The information presented in this map is intended to support adults and students walking and rolling to school. This includes the Hillsboro School District (HSD) recommended routes. Adults are responsible for choosing the most appropriate route for their children. The calmness of a route is based on a combination of traffic volume and amount of sidewalk available along each street. The calmest route options have less vehicle traffic and more complete sidewalks. Some sidewalks may not have curb ramps. Please cross at signalized intersections and at marked crosswalks when available. For more information on route and intersection determination, please see our methodology summary on the main SRTS site.

