



ELMWOOD SCHOOL

Founded in 1915, Elmwood is one of the most innovative girls' schools in North America, ranking among Canada's top 25 private schools.

Acclaimed for academic excellence, a nurturing environment, and strong community, Elmwood equips students to excel and contribute meaningfully in their academic and personal pursuits. It's no wonder that Elmwood graduates can be found leading the way at some of the world's most influential higher education institutions.

BY THE NUMBERS

375

STUDENTS

Pre-Kindergarten to Grade 12

45

COUNTRIES

Represented

15

LEARNERS

Average Class Size

41

GRADUATES

Class of 2024

72

HOURS

Community Service on Average per Student

103

OPTIONS

for Co-curricular Programs

Including Duke of Edinburgh Program, Elmwood Theatre, DECA, Model UN, Improv, Robotics, Climate Crew, HOSA

67

PERCENT

of Senior School Students Play on a Team

With 17% competing in two or more sports teams

1:6

RATIO

Faculty to Student

40

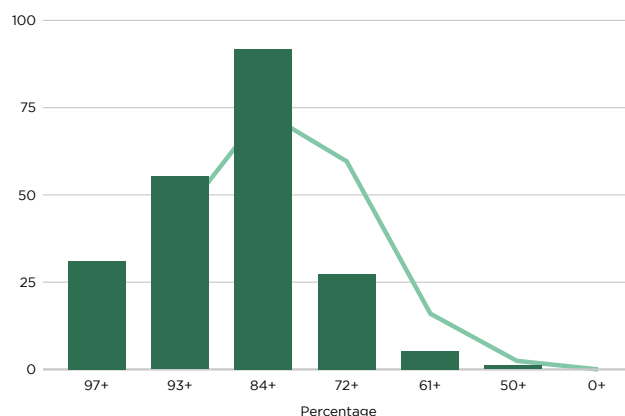
PERCENT

Faculty with
Advanced Degrees

ACADEMIC RESULTS

	2022	2023	2024
IB Average	35	35	36
Highest DP Point Average	40	40	43
OSSD Average	87.8	89.7	90.3
Highest OSSD Average	97.6	96.7	98.3
IBDP & OSSD Students			
IDBP	7	7	10
IB Certificate	22	19	33
OSSD	44	34	41

GRADE DISTRIBUTION



Compulsory Credits

The 18 compulsory credits are noted as follows, including courses that must be taken to fulfill each group noted:

- 4 credits in English (1 per grade)
- 3 credits in Mathematics (at least 1 in Grade 11 or 12)
- 3 credits for group 1, 2 and 3 courses (1 in each group)
- 2 credits in Science
- 1 credit in Canadian History
- 1 credit in Canadian Geography
- 1 credit in the Arts
- 1 credit in Health and Physical Education
- 1 credit in French as a Second Language
- 0.5 credit in Career Studios
- 0.5 credit in Civics

GROUP 1

English (including the Ontario Secondary School Literacy Course) or French as a Second Language, a Native Languages, First Nations, Métis, and Inuit Studies, a classical or an international language, Social Sciences and Humanities, Canadian and World Studies, Guidance and Career Education, Cooperative Education.

GROUP 2

Health and Physical Education, the Arts, Business Studies, French as a Second Language, Cooperative Education.

GROUP 3

Science (Grade 11 or 12), Technological Education, French as a Second Language, Computer Studies, Cooperative Education.

ADDITIONAL REQUIREMENTS

- Completion of 40 volunteer hours
- Successful completion of the Literacy Test

IBDP and OSSD Grade 11/12 Equivalent Courses Offered for Compulsory Credits

Groups & IBDP Courses

OSSD Subject Choice (& Equivalent)

GROUP 1: STUDIES IN LANGUAGE & LITERATURE

HL/SL Language A: Literature (Mandarin & French)
HL/SL

English Literature (ENG3U, ENG3U)
Self-Taught (Credit will vary, depending on the Language)

GROUP 2: INDIVIDUALS & SOCIETIES

HL/SL Economics, SL Environmental Systems & Societies,
HL/SL History (History of the Americas)

History (CHA3U, CHY4U), Economics (CIA3M, CIA4U),
Environmental Systems & Society (Ontario Credits, SVN3M, CGR4M)

GROUP 3: SCIENCES

HL/SL Biology, HL/SL Chemistry, HL/SL Physics

Biology (SBI3U, SBI4U), Chemistry (SCH3U, SCH4U), Physics (SPH3U, SPH4U), Environmental Systems & Society (SVN3M, CGR4M)

GROUP 4: LANGUAGE ACQUISITION

Language B: Language Acquisition (French, Spanish, Latin) comm
Language B: Ab Initio (French)

French (FSF3U, FSF4U OR FEF3U, FEF4U), Spanish (Ontario Credits, LSWSCU, LWSDU), Latin (Ontario Credits, LVLCU, LVLDU),
Mandarin (Ontario Credits, LKBCU, LKBDU)

GROUP 5: MATHEMATICS

HL/SL Mathematics Analysis & Approaches

Mathematics HL (MCR2U, MHFU, MCV4U, MDM4U),
Mathematics FL (MCR3U, MHF4U, MCV4U)

GROUP 6: ARTS (OR SECOND SUBJECT FROM GROUP 2, 3, OR 4)

HL/SL Music, HL/SL Visual Arts, HL/SL Theatre

History (CHA3U, CHY4U), Economics (CIE3M, CIA4U),
Environmental Studies & Society (Ontario Credits, SVN3M, CGR4M)

OUR GRADUATES

Our program is designed for comprehensive university readiness, so that our graduates can thrive at the higher education institution of their dreams. We equip them with superior language education so that they may communicate with deftness and integrity.



Academically accomplished

We emphasize research, lab, study and technology fundamentals to foster life-long learning.



Globally minded

Our students learn in a diverse community that promotes curiosity, empathy and discernment.



Well-rounded and community-oriented

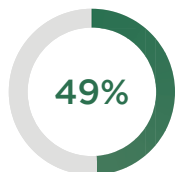
Outstanding writing, oration and community service builds strong leaders and contributors.



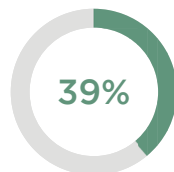
CLASS OF 2024

Program Breakdown

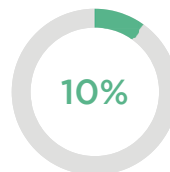
A percentage greater than 100 is a result of the students pursuing dual degrees.



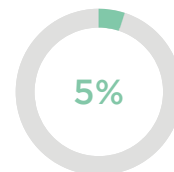
STEM



Arts, Humanities
and Social Sciences



Visual and
Creative Arts



Commerce and
Business

5-Year University Acceptance List

CANADA

Acadia University
Algonquin College
Bishops University
Brescia University College
Brock University
Carleton University
Concordia University
Dalhousie University
Huron University at Western
Institute of Technology
King's University College
Lakehead University
McGill University
McMaster University
Memorial University
Mount Allison University
Mount Saint Vincent
OCAD University
Queen's University
Quest University
Simon Fraser University
St. Francis Xavier University
St. Jerome's University
St. Mary's University
St. Paul's University
St. Thomas University
Toronto Metropolitan University
Trent University
University of Alberta
University of British Columbia
University of British Columbia - Sauder School of Business
University of Guelph
University of King's College
University of New Brunswick
University of Ontario

University of Ottawa
University of Prince Edward Island
University of Toronto
University of Victoria
University of Waterloo
University of Winnipeg
Université de Sherbrooke
Western University
Western University – Richard Ivey Business School
Wilfrid Laurier University
York University

UNITED STATES

Albion College
American University
American University of Cairo
Auburn College
Baylor University
Boston University
Bryn Mawr College
De Paul University
Emory and Henry College
Florida State University
Fordham University
George Washington University
Georgia Institute of Technology
Harvard University
Hawaii Pacific University
Hobart William Smith College
Houghton College
Kennesaw State University
Lebanese American University
Massachusetts College of Pharmacy and Health Science
Massachusetts Institute of Technology

Miami University Ohio
Mount Holyoke College
New School University
New York University
Northeastern University
NYU Tisch School of the Arts
Ohio State University
Penn State University
Pepperdine University
Plymouth State University
SUNY Potsdam
SUNY Stony Brook University
Salve Regina University
Savannah College of Art and Design
Seton Hall University
Skidmore College
Smith College
Southern Methodist University
St. Lawrence University
Sweet Briar College
Syracuse University
Temple University
Texas A&M University
UC Berkeley
UC Riverside
UC Santa Barbara
UC Santa Cruz
University Austin Texas
University Southern California
University of Alabama
UC Davis
UC San Diego
University of Cincinnati
University of Colorado Boulder
University of Connecticut
University of Delaware
University of Denver

University of Georgia, Athens
University of Kentucky
University of Massachusetts Amherst
University of Michigan
University of New Hampshire
University of North Carolina at Chapel Hill
University of Puget Sound
University of Rhode Island
University of Rochester
University of South Carolina – Columbia
University of South Florida – Main Campus
University of Vermont
University of Washington
University of Windsor
Wake Forest University
Wayne State University
Yale University

IRELAND & THE UK

Aston University
Birkbeck, University of London
Brunel University London
Cardiff University
City, University of London
Durham University
Groningen
Lancaster University
London School of Economics
Newcastle University
Royal College of Surgeons in Ireland
Royal Holloway, University of London
Royal Veterinary College, University of London
Trinity College of Dublin
University College London

University College of Dublin
University of Birmingham
University of Brighton
University of Bristol
University of Durham
University of Edinburgh
University of Exeter
University of Glasgow
University of Kent
University of King's College
University of Leeds
University of Manchester
University of Oxford
University of Southampton
University of St Andrews
University of Stirling
University of Surrey
University of Sussex
University of Warwick
University of Westminster
University of York

OTHER REGIONS

AMD (Academy of Fashion and Design) - Munich
École Supérieure de Commerce de Paris
Glon Institute of Higher Education
Gulf Medical University
Jönköping University
Leiden University
Maastricht University
Medical University of Bahrain
Royal College of Surgeons
Sciences Po
University of Amsterdam
Vrije University - Amsterdam



ELMWOOD
SCHOOL

Proud member of Canadian Independent School Counsellors (CISC) and the International Association for College Admission Counseling (IACAC)

Address 261 Buena Vista Road
Ottawa, Ontario, Canada
K1M 0V9

Phone (613) 749-6761

Key Contacts James Whitehouse
Head of School

Christina Schindler
Principal, Middle and Senior School

Alyson Bartlett
Director of University Counselling

Katie Fraser
Director of Student Success