

Welcome Back to School!!!



2024-25 School Year
Mrs. Pritchett

Who is new to NBC Middle School?

Mr. Corle - Tech Ed Teacher



Who should I know in the middle school/high school?



Mr. Beatty



Mrs. Pritchett



Mrs. Cherry



Mr. Cerully



Three Basic Expectations For Our Middle School

- Be On Time
- Be Prepared
- Be Respectful

These expectations apply to everyone.



PRIDE - School Wide Positive Behavior

- Positive
- Respectful
- Involved
- Dependable
- Excellent

Each and every student is important at NBC, and we want you ALL to do your best. Let's work together to make this school year the best we can!



What is bullying?

- Imbalance of Power: Kids who bully try to control or harm others.
- Repetition: Bully behaviors happen more than once.

Bullying is NOT cool. It is cowardly...done by someone who is trying to gain control in a wrong and disrespectful way.



Bullying

- We all have disagreements, but we can handle disagreements in a kind way.
- Bullying is extremely harmful to all involved.
- Let's work together to keep this out of our school.
- Remember number 1 of our 3 basic expectations - BE RESPECTFUL
- Bullying will not be tolerated and has serious consequences.

Bullying - Your Role



- We will not bully others.
- We will try to help students who are bullied.
- We will include students who are easily left out.
- When we know someone is being bullied, we will tell an adult at school or an adult at home.

Together let's prevent bullying at NBC!



- <https://www.safe2saypa.org/>

Taking Care of Our School

Gym Floor Expectations:

- Our gym floor was resurfaced a little over three years ago. The floor turned out great, and we want to do everything we can collectively to take care of the new surface.
- “Street” shoes are not permitted on the gym surface. Athletes and PE students must change into their clean, indoor athletic shoes before walking on the new surface.
- At no time should any student be unsupervised in the gymnasium.

Also, clothing must be hung in a locker for PE class and for practices/games. Be sure to clean up after yourself. **Nothing should be left on the locker room floor after you leave, and BE SURE YOU TAKE ALL OF YOUR CLOTHES WITH YOU.**

Cafeteria



Cafeteria Behavior

- 7th and 8th graders may not change seats when the sixth grade leaves.
- Talk in a normal tone.
- If you make a mess, clean it up.
- Keep your hands to yourself - off others' trays, food, and bodies.
- Push your chair in when returning your tray and at dismissal from the cafeteria.
- Put trays neatly on top of the previous tray.
- NO food or drink may be removed from the cafeteria – breakfast or lunch.
- Students that misbehave may receive an assigned seat and/or other discipline.

Breakfast/Homeroom

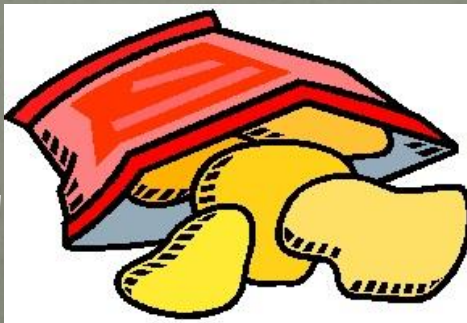
- IMPORTANT: Stop at your homeroom to sign the board before going to breakfast.
- Do not wait for friends.
- Remain in the cafeteria until dismissed by the supervisor to report to period 1.
- Pledge of Allegiance will occur at 7:59am each day.

Breakfast/Lunch



- Breakfast is FREE!
- Help your parents stay up to date on your cafeteria account.
- Must make ala carte purchases with cash only.

- Mrs. Over, Mrs. Miller, and Mr. E each day.



Mrs. Welsh, Mr. on lunch duty

Chromebooks



- Charging batteries
 - ~ Do this at home
 - ~ Keep your charger at home
- No labels or stickers - but **school labels and stickers must stay on the Chromebook/charger**
- Computer bags - You receive one. Take care of it.
- Computers should be carried in a computer case moving from class to class. Do not put anything in computer case other than laptop and agenda.
- Report malfunctioning or damaged computers to the office immediately.
- When a computer is damaged, a bill is sent home. If not paid, you will be on the Ineligibility list.
- Stolen computers must be reported immediately to the ***Middle School office*** and the police department by your parents.
- Replacement cost (estimated \$300.00)

Internet Safety for Students

When using electronic mail and other forms of direct electronic communications DO NOT:

- Go to unauthorized sites.
- Use or give personal identification information.

Name

Address

Phone Numbers

- 'Hack' or become involved in any other unlawful activities while online.



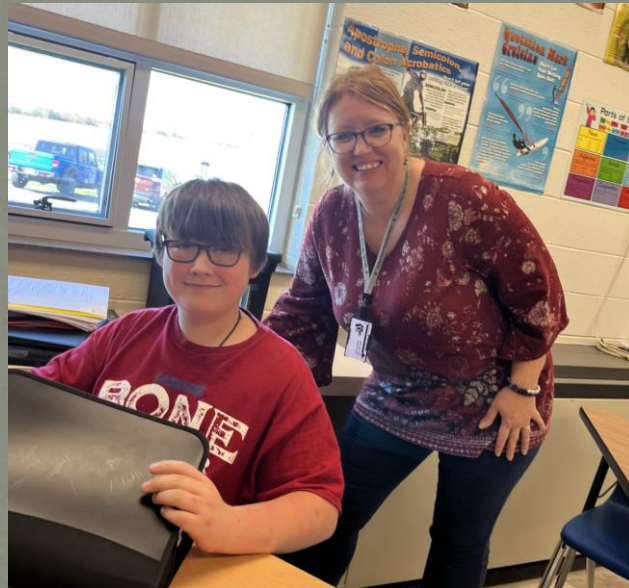
Substitute Teachers

~GUESTS IN OUR BUILDING!

~ Be on as good as or better behavior than you would be for your regular teacher.

Student expectations:

- Courteous
- Respectful
- Cooperative
- Helpful



Treat them with RESPECT!

School Bus Conduct

- Bus riding is a privilege.
- What is expected in school is also expected on the bus and bus stops.
- Do not do anything that distracts the driver. This is for the safety of you and all other passengers.
- Bus misconduct may result in your removal from the bus.



SAFETY



- ❖ Please do NOT open an outside door for anyone. This is against our school safety procedures.
- ❖ If you ever see a door propped open, report this to an adult as soon as possible.
- ❖ Run, Hide, Fight - Mr. Clark & Mrs. Clouse

School Counselor

Miss Patton - Middle School

Services Provided:

- Academic
- Personal / Social
- Career



Student Assistant Program (SAP)

Help students who may be experiencing certain difficulties including drug/alcohol, home, school, or personal problems that are affecting you at school.

If you know of someone in need of help, feel free to let any teacher know, and he/she can help you get in touch with a member of our SAP team.

Members:

Mrs. Cherry

Mrs. Brumbaugh

Mrs. Perry

Miss Patton

Mrs. Hetzer

Mrs. Over

Mrs. Klavuhn

Mrs. Pritchett

Mr. Miller

Nurse Sny

Mrs. Over

Mrs. Engla



Schedules



- Schedules are mandatory. You are expected to be present for everything that is on your schedule each day.
- Any needed schedule changes must take place within the first 6 day rotation of school. No changes can be made after the end of the first six-day cycle.
- You must follow your schedule that was originally given to you until you get a new schedule.

Visits to nurse



Students are not to visit the nurse during the first 10 minutes of class and the last 10 minutes of the class.

- Except during an emergency, students should not report to the Health Suite unannounced.
- The use of cell phones is strictly prohibited in the Health Suite without prior approval from the building nurse.
- Before coming to the Health Suite, ask yourself:
 - Is this something that needs attention at home?
 - Could I use the classroom's first aid kit?
 - Can I manage it on my own?
 - Is this a good reason to miss class?
 - Can it wait until recess/lunch/study hall?

~Ms. Snyder



Behavior in Stairwell

- Walk
- No skipping steps
- Do not pass other students
- Stay to the right so other students may pass in the opposite direction



Hallways

- QUIET ZONE - any time you are passing by high school classes
- Walk on the right side of the hallway. Do not cut corners.
- “Walk and Talk” so you are not late to class.
- Do not cause congestion in the hallways.
- If students are exiting your next classroom, wait patiently without blocking the doorway and/or hallway until students have exited.
- Do not pass people on the stairs.
- Keep your books, bags, hands, and feet to yourself.
- If you see trash, pick it up and throw it away.
- Do not slam your lockers.
- Bookbags stay in lockers.



Middle School Office



Office Expectations:

- Office Window

- Be respectful
- Be quiet
- Be patient
- Be kind



If you are absent from school...

- Check in with your teachers during (when possible) and after your absence.
- Email your teachers to find out your assignments.
- Complete all assignments provided by your teachers.



Attendance Policy



Doctor's List if...

- 5 absences during the first 45 days
- 10 absences after the 45th day of school

What does this mean?

- All future absences must have Drs. Excuse or the absence will be considered unexcused
- No EFTs approved
- Other field trips may be restricted
- We can accept up to 10 parent excuses, the rest need to come from a doctor.
- 10 absences INCLUDES unexcused days

Attendance Policy continued

Three Unexcused Absences:

- Letter sent home
- Attendance Improvement Plan is created & parent meeting is held

You may fail for the year if you are absent for 25 days or more.

Consequences for 3 or more unexcused tardies/early dismissals



Tardies/Early Dismissals

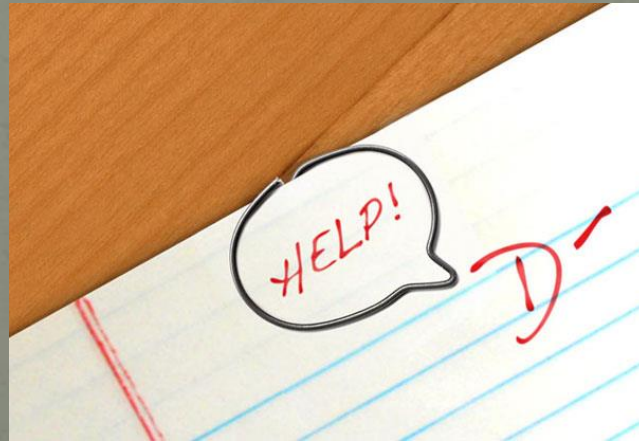
- Students must arrive at school before 11:30 AM to attend/participate in extra-curricular activities - practices or events.
- Students who are sent home from school early by the nurse or administration due to illness or other reasons may not participate or attend any extra-curricular activities.



Grading Periods



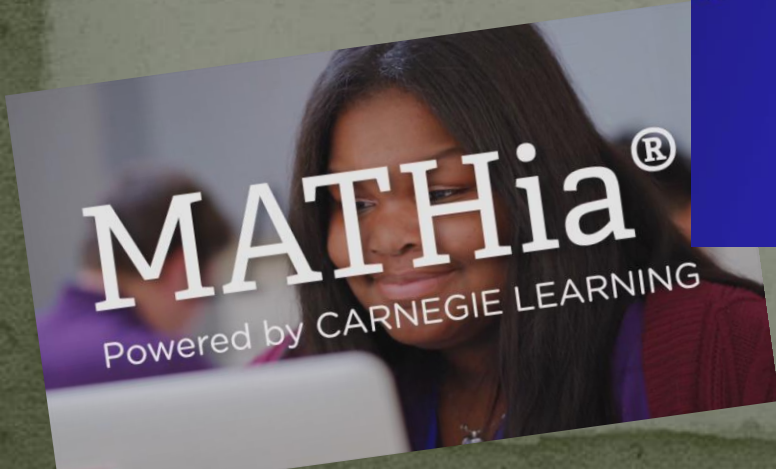
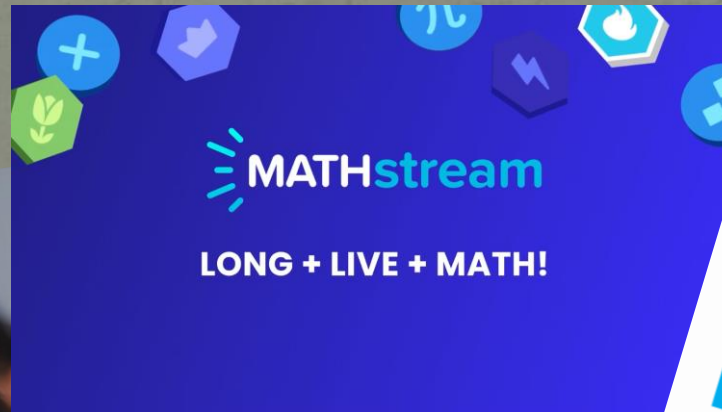
- Report Cards - four times per year.
- Interim Reports - midway through each marking period - earning less than an 80%. Will be sent home.



eMath



- This period will be dedicated to 3 programs this year. Your Math teacher will use these programs to support your Math development.
- All students are required to work on one of these 3 (tasks assigned by Math teacher) during this time.



Homework

- Complete your assignments in a timely manner and bring them to class.
- Grade 6—60 minutes
- Grade 7—70 minutes
- Grade 8—80 minutes

Homework is a part of your responsibility as a student and is assigned to provide you with extra practice or to show your teacher whether you understand a concept or not.



Eligibility Policy



You will be ineligible to participate in extracurricular activities if...

- You are failing 2 or more classes (weekly)
- You will be ineligible for 15 school days if you fail 2 or more classes on your report card
- Discipline—Several referrals in a marking period will cause you to be on the Ineligibility list.

If ineligible – you are not permitted to miss school to travel with the team or group to games, events or performances; not permitted to wear your uniform or jersey; not permitted to represent NBC in any way

Eligibility Policy



You will be ineligible to participate in extracurricular activities if...

- You are failing 2 or more classes (weekly)
- You will be ineligible for 15 school days if you fail 2 or more classes on your report card
- Discipline—Several referrals in a marking period will cause you to be on the Ineligibility list.

If ineligible – You will not be permitted to attend...

1. Fun activities outside of the school day such as our MS dance, Dance-a-Thon, and other exciting events
2. Field Trips for clubs and activities that take you away from class
3. Assemblies that take you away from class

Eligibility Policy

To sum it up...



“Work before play!”

We like to have a lot of fun in the middle school, but we ALL have a job to do first, and we must do it WELL if we want to be able to have fun too!



Dress Code



- Hair - Dyed hair must be of a natural color.
- Body piercing – tasteful ear piercings only. **Nose piercings are not permitted.**
- Shorts/skirts/dresses – finger tip rule
- Holes in clothes – finger tip rule
- No visible undergarments/bare midriffs
- No advertising alcohol/tobacco/...
- No “double meanings” or innuendos
- Clothing must be worn in the manner that it is designed.
- Disruptive to the educational process, then you will need to change.
- No oversized purses/bags are permitted in classrooms
- Straps for girls shirts must be at least one inch wide and cover all undergarments

● No flip phones in Tech Ed classes

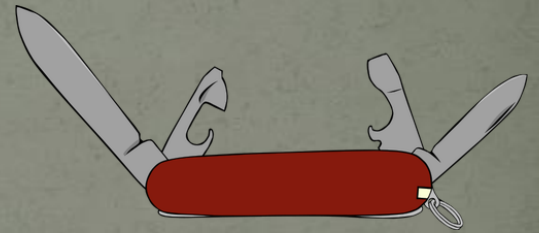
Physical Education (Gym)



- Phys. Ed. class - Appropriate athletic attire consists of t-shirts, hoodies and sweatshirts, long sleeve shirts, leggings, shorts, sweatpants, and sneakers that tie or velcro - all applying within the school dress code.
- If you are on a medical excuse for 2 weeks or less, you will continue to stay in regular physical education class and participate to the extent you are able.
- If you are excused for more than 2 weeks, you will be required to complete relevant written assignments each day you are scheduled for physical education.
- If you are medically excused from all activity for more than 4 weeks, you will be reassigned to study hall and will be required to make up the time missed due to the excuse.

Dangerous Objects/Weapons

- You are not permitted to possess items such as guns, knives, bow and arrows, air rifles/pistols/, etc. on school property. - THIS INCLUDES LOOK ALIKES SUCH AS TOYS.
- You may be expelled or sent to alternative education for violating the District Weapon Policy.
- Threats will be treated seriously.
- Be sure to notify a teacher or the office IMMEDIATELY if you have a pocket knife here accidentally.



Drugs/Alcohol/Tobacco



- Illegal Drugs/Alcohol
- Over-the-Counter Drugs/Medications
- Prescription Drugs/Medications
- You may be expelled or sent to alternative education for violating the District Drugs and Alcohol Policy
- Illegal to possess or use tobacco products or vapes on school property - THIS IS SERIOUS AND WILL BE REPORTED TO THE POLICE.
- Juuling, Vaping, e-cigarettes - Caffeine ingestion devices
- First offense - referred to “Saturday” school and to District Magistrate
- Second offense - referred to District Magistrate

Lockers



- Every student is assigned a specific locker. Only use the one assigned to you.
- School property - may be searched
- No locks unless you want to bring one of your own
- All locks can (and may) be cut off by administrator if you forget your key or combination and/or if your locker needs searched.
- Do not share lockers
- No items are permitted on top of lockers
- Leave your valuables and large sums of \$ at home.
- You are responsible for the condition of your locker.
- Lockers must be closed with no items sticking out of the locker.
- Report problems to the office immediately.

Locker Visits

You are permitted to visit your lockers after periods that allow 3 minutes to get to the next class.

- You are NOT permitted to stop after period 1. Take your materials to homeroom or breakfast.
- After periods 2, 5, 6, 8, 9, and 10
- Before and after lunch to take care of cell phone
- With teacher permission

NEVER get into another student's locker!



Early Arrivers



- If you arrive at school before 7:55 AM, have your parents drop you off at the FRONT of the school.
- If you're here before 7:45 you must go directly to the cafeteria. Do not go to your locker first.
- No students are permitted in the building before 7:30.

Cell Phones, Digital Cameras, iPods, and other electronic devices

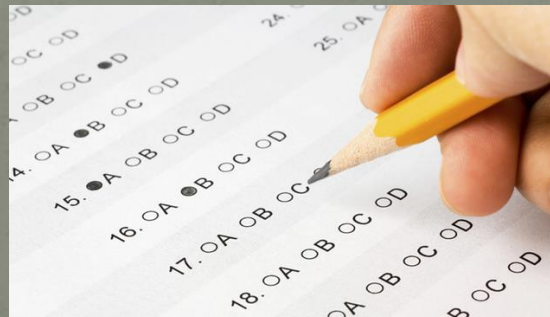
- Middle school students are not permitted to have a cell phone on their person during the school day aside from lunch.
- Cell phones and smart watches with texting features can be kept in the hallway lockers throughout the day.
- If you display or use it without teacher permission, you will be told to put it away. Put it away. Not complying with the teacher will make things worse.
 - 1st Time: Warning.
 - 2nd Time: Placed in the office until the end of the day.
 - 3rd Time: Placed in the office until a parent can pick it up, and may be referred to principal for disciplinary action.
 - 4+ Times: Disciplinary referrals with progressive discipline

Excessive or severe cell phone violations may result in cell phone suspension for that student.



PSSA & Keystone Testing Dates:

- April 22nd and 23rd: ELA PSSA (Grades 6-8)
- April 29th: Math PSSA (Grades 6-8)
- April 30th: Science PSSA (Grade 8)
- May 13 and 14: Algebra I Keystone (Grade 8)



This Photo by Unknown Author is licensed under [CC BY-NC-ND](https://creativecommons.org/licenses/by-nc-nd/4.0/)

Remember: Panthers have...

PRIDE

POSITIVE *

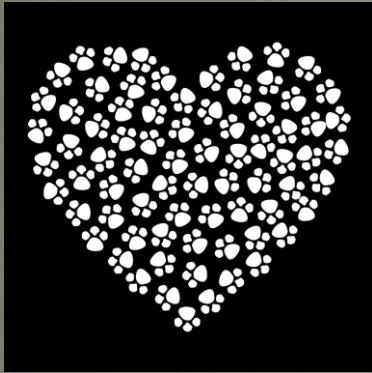
RESPECTFUL *

INVOLVED *

DEPENDABLE *

EXCELLENT

2024-25 is going to be a
GREAT school year!



GO PANTHERS!!!