

PORTRAIT OF A LEARNER



TUFS Mission Statement: Empower students to make informed choices and assume responsibility for their actions as they become self-directed, life-long learners, committed, and able contributors to a sustainable local and global society. In partnership with our diverse community, we promote continuous growth through active engagement in a personalized learning environment characterized by high expectations and academic rigor in a climate of collaboration and mutual respect.

Our Vision of Deep Learning

· Personal interest and intrinsic motivation · Hands-on, experiential learning processes · Positive attitude and success orientation · Mentorship, modeling, inspiration, and instructional support · Accurate, timely, and supportive communication and feedback · Adequate resources to support learning · Supportive, safe, culturally relevant, and encouraging learning environment

Foundational Concepts

Instruction for Deep Learning · Goals for Learning · Resource Deployment · Leadership Focus · Assessment and Management · Policy and Regulation · Community Engagement

SKILLS



Communication

We empower students to express themselves clearly, thoughtfully, and persuasively in written and spoken forms, fostering understanding of diverse perspectives.



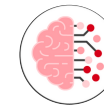
Creativity

We encourage students to think imaginatively, generate innovative ideas, and approach issues from fresh angles, cultivating open-mindedness and adaptability.



Executive Functioning

Students develop organization, time management, and problem-solving skills to navigate life's challenges and opportunities.



Critical Thinking

Students will evaluate information, analyze complex situations, and make informed decisions, inspiring intellectual curiosity and a commitment to lifelong learning.

DISPOSITIONS



Civic Mindedness

We cultivate a strong sense of civic responsibility, inspiring students to impact their community and promoting active engagement for the betterment of society.



Curiosity

We nurture a sense of wonder and inquisitiveness, motivating students to explore, question, and seek answers, propelling personal growth and a love of discovery.



Perseverance

Students learn to face adversity with determination and push forward to pursue goals, setting the stage for personal achievement and resilience.



Socio-Cultural Competence

Students engage respectfully and effectively with diverse individuals, fostering empathy, inclusivity, and a deeper understanding of global issues.

Priority Strategic Actions

1. Refine and connect the critical goal-setting, curriculum, and professional learning systems so there is alignment with and focus on the key learning goals of the district.
2. Create and deliver effective and timely communications to all stakeholders to support meaningful partnerships for inclusivity, achievement, and continuous student growth.
3. Create an aligned assessment infrastructure to guide all TUFS students through their journey to acquire the skills and dispositions of the Portrait of a Learner.