

**Tomahawk Elementary
School**
6301 W 78th St. Shawnee Mission
KS, 66204

CONSTRUCTION UPDATE 8/23/2024

OWNER: Shawnee Mission School
District

ARCHITECT: DLR Group

CM: JE DUNN

CURRENT PROGRESS

- Area B Exterior Stud Framing/Sheathing
- Area A Overhead MEP
- Area A Weatherproofing
- Gym Roof Install
- Gym Masonry Wall Install

2 WEEK LOOK AHEAD

- Area A/B Roof Install
- Area A Interior Framing
- Area B Overhead MEP
- Area B Weatherproofing
- Exterior Masonry Install

SHAWNEE MISSION SCHOOL DISTRICT
TOMAHAWK ELEMENTARY SCHOOL
OPENING FALL 2025



SHAWNEE MISSION
SCHOOL DISTRICT



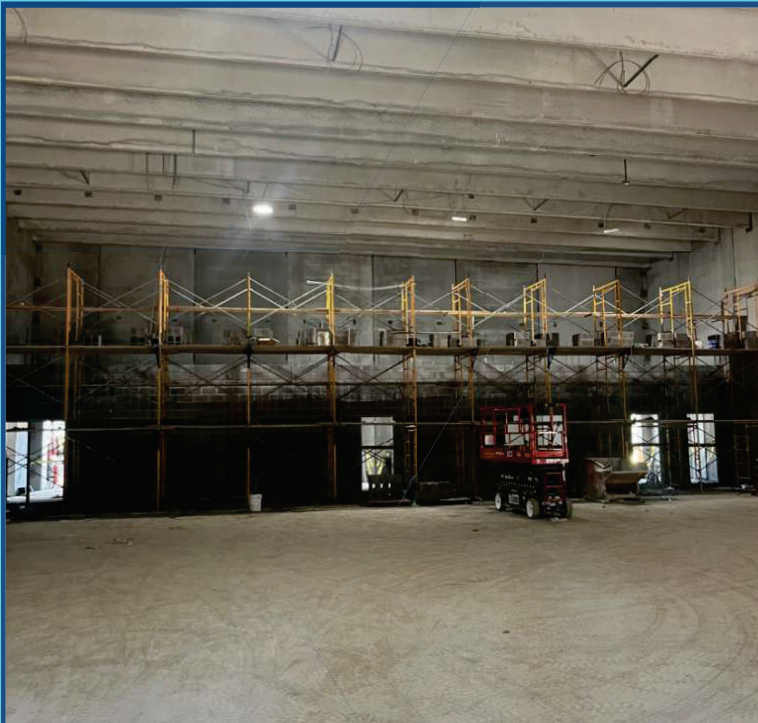
DLR Group
Architecture | Engineering | Planning | Interior



SMSD Tomahawk Elementary School



Tomahawk Elementary School
6301 W 78th St. Shawnee Mission KS, 66204

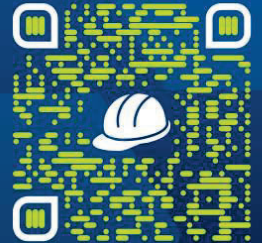


Gym CMU Wall Install



**BUILDING
THE FUTURE**

A K-12 CONSTRUCTION EDUCATION INITIATIVE OF JE DUNN



BUILDINGTHEFUTURE.JEDUNN.COM



South Radius Wall Progress



SMSD Tomahawk Elementary School



Tomahawk Elementary School
6301 W 78th St. Shawnee Mission KS,
66204



Overhead MEP Progress

SAFETY
EVERYONE.
EVERYWHERE.
ALL THE TIME.



Gym Roof Install



SMSD Tomahawk Elementary School



Tomahawk Elementary

School

6301 W 78th St. Shawnee Mission
KS, 66204

CONSTRUCTION UPDATE 7/05/2024

OWNER: Shawnee Mission School District

ARCHITECT: DLR Group

CM: JE DUNN

CURRENT PROGRESS

- Area A Structural Steel Detailing
- Slab On Grade Concrete Complete
- Light Pole Base Layout
- Area B Structural Steel Installation

2 WEEK LOOK AHEAD

- Area B Structural Steel Detailing
- Area A Slab On Metal Deck Concrete Floor
- Exterior Framing

SHAWNEE MISSION SCHOOL DISTRICT TOMAHAWK ELEMENTARY SCHOOL OPENING FALL 2025



SHAWNEE MISSION
SCHOOL DISTRICT



DLR Group
Architectural Engineering Planning Interior



SMSD Tomahawk Elementary School

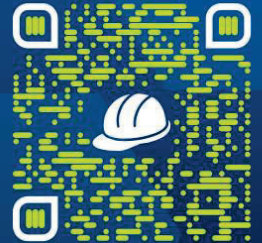


Tomahawk Elementary School

6301 W 78th St. Shawnee Mission KS, 66204



Area A Structural Steel Detailing



BUILDINGTHEFUTURE.JEDUNN.COM



Completed Concrete Slab



SMUSD Tomahawk Elementary School



Tomahawk Elementary School
6301 W 78th St. Shawnee Mission KS,
66204

SAFETY
EVERYONE.
EVERYWHERE.
ALL THE TIME.



Kitchen Structural Steel Erection



West Side Site View



SMSD Tomahawk Elementary School



Tomahawk Elementary

School

6301 W 78th St. Shawnee Mission
KS, 66204

CONSTRUCTION UPDATE 6/21/2024

OWNER: Shawnee Mission School District

ARCHITECT: DLR Group

CM: JE DUNN

CURRENT PROGRESS

- Area A Structural Steel Erection
- Kitchen/Gym Slab Install
- Underground MEP Completed

2 WEEK LOOK AHEAD

- Area A Structural Steel Detailing
- Slab On Grade Concrete Complete
- Light Pole Bases Install

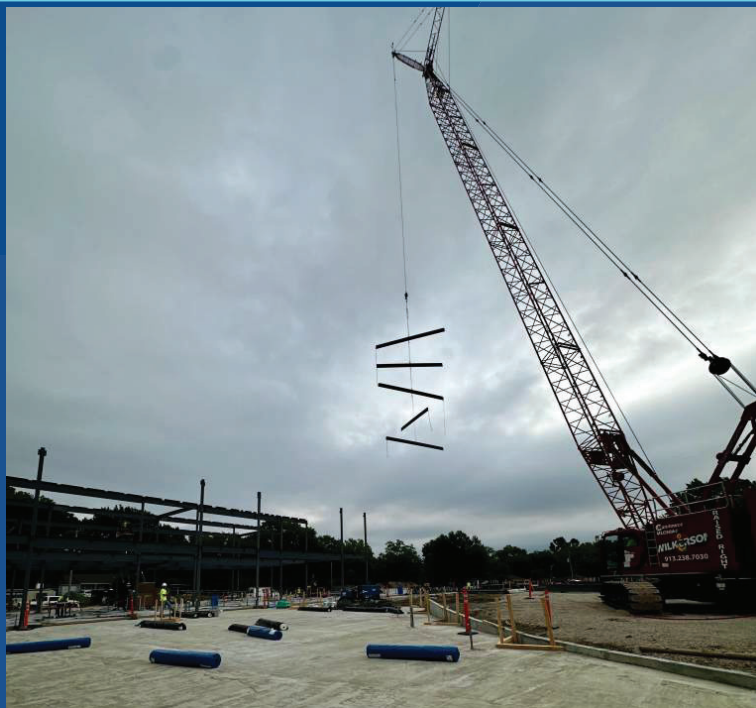
SHAWNEE MISSION SCHOOL DISTRICT
TOMAHAWK ELEMENTARY SCHOOL
OPENING FALL 2025



SMSD Tomahawk Elementary School



Tomahawk Elementary School
6301 W 78th St. Shawnee Mission KS, 66204

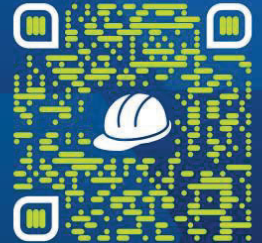


Area A Structural Steel Install



**BUILDING
THE FUTURE**

A K-12 CONSTRUCTION EDUCATION INITIATIVE OF JE DUNN



BUILDINGTHEFUTURE.JEDUNN.COM



Area A Steel



SMSD Tomahawk Elementary School



Tomahawk Elementary School
6301 W 78th St. Shawnee Mission KS,
66204

SAFETY
EVERYONE.
EVERYWHERE.
ALL THE TIME.



Kitchen Concrete Slab Preparation



North West Corner Site View



SMSD Tomahawk Elementary School



Tomahawk Elementary

School

6301 W 78th St. Shawnee Mission
KS, 66204

CONSTRUCTION UPDATE 6/7/2024

OWNER: Shawnee Mission School District

ARCHITECT: DLR Group

CM: JE DUNN

CURRENT PROGRESS

- Area A & B Recessed Slab Install
- Area B South Slab Install
- Kitchen Underground MEP
- Gym Underground MEP

2 WEEK LOOK AHEAD

- Kitchen Slab Install
- Gym Slab Install
- Area A Structural Steel Erection

SHAWNEE MISSION SCHOOL DISTRICT
TOMAHAWK ELEMENTARY SCHOOL
OPENING FALL 2025



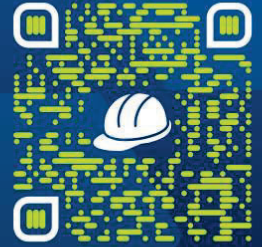
SMSD Tomahawk Elementary School



Tomahawk Elementary School
6301 W 78th St. Shawnee Mission KS, 66204



Area A Slab Install



BUILDINGTHEFUTURE.JEDUNN.COM



Cafeteria Slab Install



SMDS Tomahawk Elementary School



Tomahawk Elementary School
6301 W 78th St. Shawnee Mission KS,
66204



Completed FEMA Gym Install

SAFETY
EVERYONE.
EVERYWHERE.
ALL THE TIME.



Kitchen Underground MEP



SMSD Tomahawk Elementary School



**Tomahawk Elementary
School**
6301 W 78th St. Shawnee Mission
KS, 66204

CONSTRUCTION UPDATE 5/24/2024

OWNER: Shawnee Mission School
District

ARCHITECT: DLR Group

CM: JE DUNN

CURRENT PROGRESS

- Area A/B South Underground MEP
- Grouting of Pre-Cast Concrete

2 WEEK LOOK AHEAD

- Area B South Slab Install
- Structural Steel Delivers to Site
- Kitchen Underground MEP
- Gym Slab Install



SMSD Tomahawk Elementary School



Tomahawk Elementary School
6301 W 78th St. Shawnee Mission KS, 66204

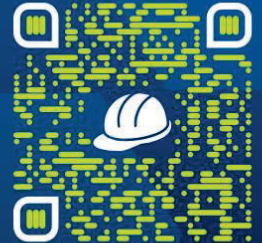


Ongoing Underground MEP



**BUILDING
THE FUTURE**

A K-12 CONSTRUCTION EDUCATION INITIATIVE OF JE DUNN



BUILDINGTHEFUTURE.JEDUNN.COM



Area B North Slab Install



SMSD Tomahawk Elementary School



Tomahawk Elementary School
6301 W 78th St. Shawnee Mission KS,
66204



Installed FEMA Gym

SAFETY
EVERYONE.
EVERYWHERE.
ALL THE TIME.



FEMA Gym Install



SMSD Tomahawk Elementary School



Tomahawk Elementary

School

6301 W 78th St. Shawnee Mission
KS, 66204

CONSTRUCTION UPDATE 4/19/2024

OWNER: Shawnee Mission School
District

ARCHITECT: DLR Group

CM: JE DUNN

CURRENT PROGRESS

- Area B Footing Install
- Area A Underground MEP Install
- Site Utility Install

2 WEEK LOOK AHEAD

- Area B Underground MEP Install
- Area A Concrete Slab Install

SHAWNEE MISSION SCHOOL DISTRICT TOMAHAWK ELEMENTARY SCHOOL OPENING FALL 2025



SMSD Tomahawk Elementary School



Tomahawk Elementary School
6301 W 78th St. Shawnee Mission KS, 66204

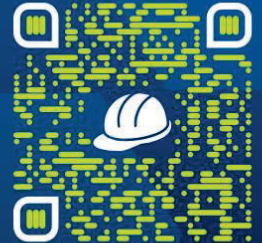


Retaining Wall Progress



**BUILDING
THE FUTURE**

A K-12 CONSTRUCTION EDUCATION INITIATIVE OF JE DUNN



BUILDINGTHEFUTURE.JEDUNN.COM



Underground MEP Area A



SMSD Tomahawk Elementary School



Tomahawk Elementary School
6301 W 78th St. Shawnee Mission KS,
66204

SAFETY
EVERYONE.
EVERYWHERE.
ALL THE TIME.



Area B Footing Install



Admin Area Concrete Install



SMSD Tomahawk Elementary School



**Tomahawk Elementary
School**
6301 W 78th St. Shawnee Mission
KS, 66204

CONSTRUCTION UPDATE 4/5/2024

OWNER: Shawnee Mission School
District

ARCHITECT: DLR Group

CM: JE DUNN

CURRENT PROGRESS

- Area A Footing Install
- Underground MEP Install
- Retaining Wall Install

2 WEEK LOOK AHEAD

- Area A Concrete Slab Install
- Area B Footings Install

SHAWNEE MISSION SCHOOL DISTRICT
TOMAHAWK ELEMENTARY SCHOOL
OPENING FALL 2025



SHAWNEE MISSION
SCHOOL DISTRICT



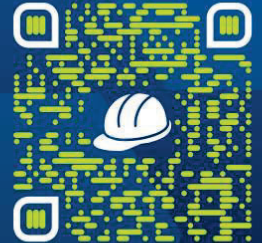
SMSD Tomahawk Elementary School



Tomahawk Elementary School
6301 W 78th St. Shawnee Mission KS, 66204



Retaining Wall Install



BUILDINGTHEFUTURE.JEDUNN.COM



Radius Storefront Footings



SMSD Tomahawk Elementary School



Tomahawk Elementary School
6301 W 78th St. Shawnee Mission KS,
66204



Gym Footing Install

SAFETY
EVERYONE.
EVERYWHERE.
ALL THE TIME.



Site Utilities Install



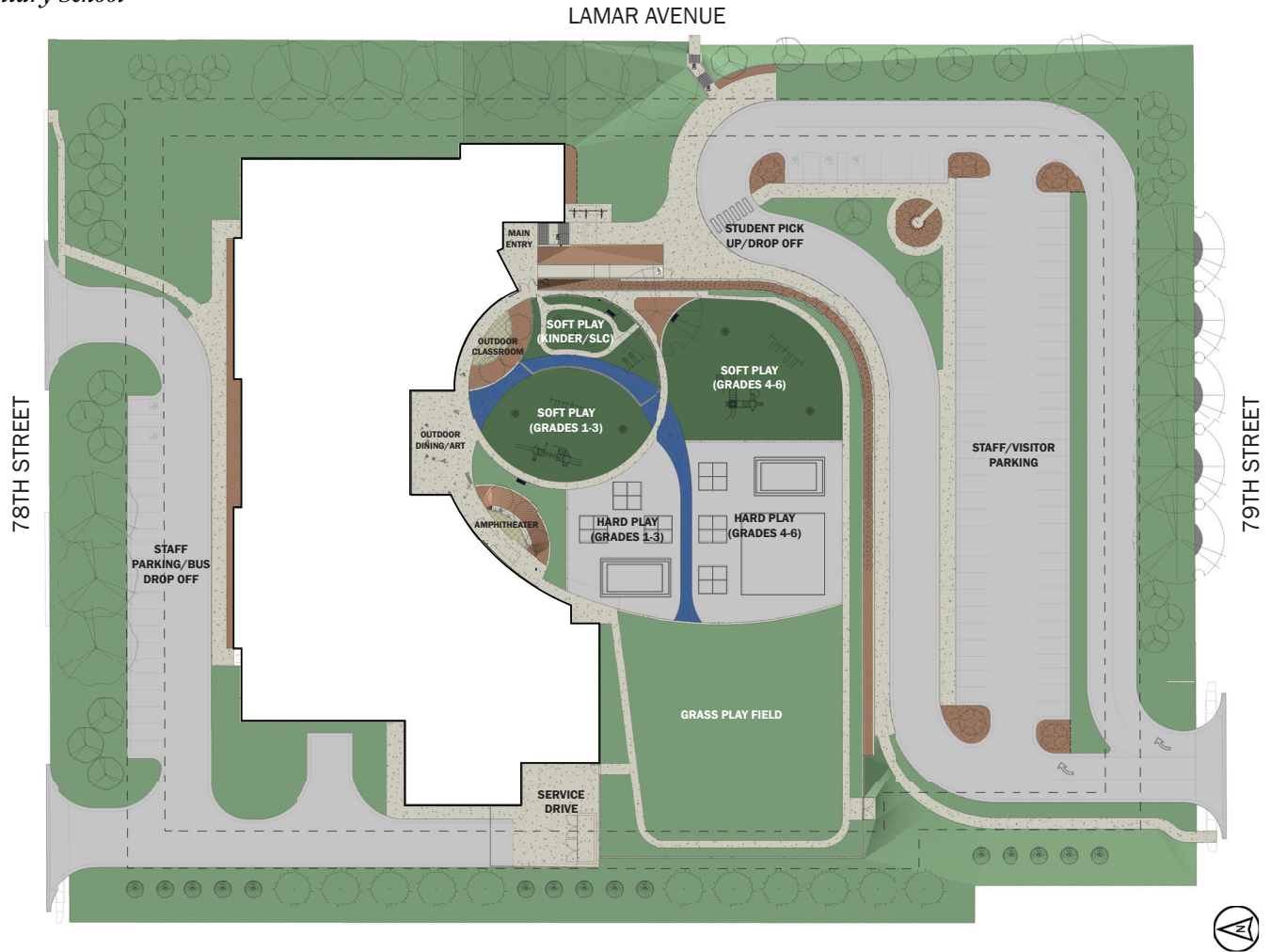
SMSD Tomahawk Elementary School



Tomahawk Elementary School
Media Center



Tomahawk Elementary School
Site Plan



TOMAHAWK ELEMENTARY SCHOOL
 05/18/2023 Town Hall Open House

DESIGN PHASE

PD SD **DD** CD

COPYRIGHT© 2023

THIS INFORMATION IS CONCEPTUAL IN NATURE
 AND IS SUBJECT TO ADJUSTMENTS PENDING
 FURTHER PROJECT DEVELOPMENT.



Tomahawk Elementary School
Floor Plan: Level 01



- ADMINISTRATION
- ATHLETICS
- MUSIC
- MEDIA CENTER
- SPECIAL LEARNING AREAS
- ART / MAKER SPACE
- COMMONS
- LEARNING STUDIO
- SERVICE



TOMAHAWK ELEMENTARY SCHOOL
 05/18/2023 Town Hall Open House

DESIGN PHASE
 PD SD **DD** CD

COPYRIGHT© 2023
 THIS INFORMATION IS CONFIDENTIAL IN NATURE
 AND IS SUBJECT TO ADJUSTMENTS PENDING
 FURTHER PROJECT DEVELOPMENT.



Tomahawk Elementary School
Floor Plan: Level 02



- | | | |
|----------------|------------------------|-------------------|
| ADMINISTRATION | ATHLETICS | MUSIC |
| MEDIA CENTER | SPECIAL LEARNING AREAS | ART / MAKER SPACE |
| COMMONS | LEARNING STUDIO | SERVICE |



TOMAHAWK ELEMENTARY SCHOOL
 05/18/2023 Town Hall Open House

DESIGN PHASE

PD SD **DD** CD

COPYRIGHT © 2023

THIS INFORMATION IS CONFIDENTIAL IN NATURE
 AND IS SUBJECT TO ADJUSTMENTS PENDING
 FURTHER PROJECT DEVELOPMENT.



Tomahawk Elementary School

Exterior - Looking Toward Commons



Tomahawk Elementary School

Exterior - Looking Toward Playgrounds



Tomahawk Elementary School
Main Entry



Tomahawk Elementary School
Dining Commons

