

**ETOWAH
ADMINISTRATION**

Principal

Mr. Robert Horn

Assistant Principals

Mr. Scott Bradley (A-Ci)

Ms. Janet Baggett (Cl-Gon)

Dr. Brett Pinckard (Goo-Lee)

Mr. Matthew Renney (Lef-Orz)

Dr. Curt Ashley (Os-Simz)

Ms. Kelly Flatt (Sin-Z)

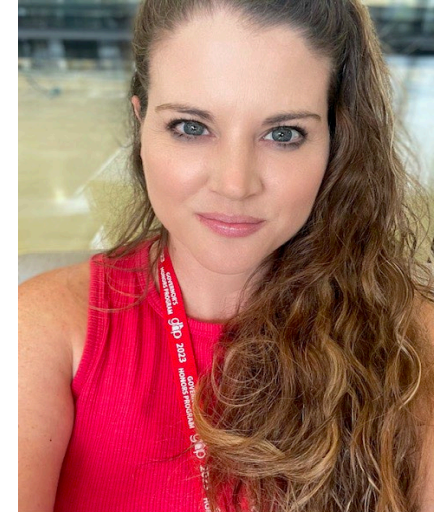
COUNSELING STAFF



Whitney Morberg
A-C



Alayna Petersen
D-Hog



Sharon Gustafson
Hol-Mit

COUNSELING STAFF



Taylor Herman
Mix-Rub



Lauren Watkins
Rud-Z

PLANNING INFORMATION

Counseling Office information

- **Make sure you accept your 2024 EHS Student Services Course on Canvas for important announcements.**

Post-secondary planning

- Gain knowledge in next steps toward post-secondary plans:
 - Military service
 - Workforce
 - Apprenticeships
 - College Admissions
 - Other

Senior night-lots of information you need for colleges, trades, and military Sept. 5th 6pm
Financial Aid Night October 16th 7pm Virtual

REQUIREMENTS FOR 2024 GRADUATES

Core Course Requirements



4 Units of Literature



4 Units of Math



4 Units of Science

Must include Biology, Physical Science or Physics, and Earth, Environmental, or Chemistry



3 Units of Social Studies

Elective Requirements

1 Unit of Health (.5) and Personal Fitness (.5)

3 Units of required electives

- World Language, Fine Arts and/or Career/Technical

4 Units of miscellaneous electives

TAA provides potential .5 credit Pass or Fail grade

23 total units are required for graduation

Honor Graduates: *cumulative weighted NGA of 90 or above*

INTERNATIONAL SKILLS DIPLOMA SEAL (ISDS)

- “The International Skills Diploma Seal is awarded to graduating high school students who complete an international education curriculum and engage in extracurricular activities and experiences that foster the achievement of global competencies.”
- “It is a signal to employers and higher education institutions that a student is prepared to participate in the global economy.”



PRELIMINARY SELECTION



Three years of the
same World
Language



4 units of
International Focus
courses

[ISDS Approved Course List](#)

- Total of World Language Units and International Focus Units must equal at least 8





Activities with Global Themes or in a Global Context

Examples:

- Exchange programs
- International and language clubs
- Travel abroad
- Science and social studies fairs
- Model UN
- Global classroom projects

4 EXTRACURRICULAR
ACTIVITIES OR EXPERIENCES



**20 HOURS OF
DOCUMENTED
GLOBAL
COMMUNITY
SERVICE**

Examples:

- Raising Money for Hands and Feet Ministries
- Providing activities for children of Spanish speaking parents that come to school for informational evening seminars
- Providing translation services in school-based events
- Any approved school-based cross cultural /global community service activity
- Faith-based mission trips
- Volunteering in Citizenship classes
- Volunteering in English classes
- Shoeboxes for Christmas



CAPSTONE PROJECT

The Capstone Project must include an international focus and demonstrate connections between the international course work, the extracurricular activities, the service project, and product developed during the senior project.

Product Log will include additional work composed of documentation of Global Community Service and Extracurricular Activities along with a written reflection

Contact Michelle.mcgowan@cherokeek12.net

To apply



It's fun! It's Easy!



“It is a signal to employers and higher education institutions that a student is prepared to participate in the creative economy.”



Honorees will receive a seal on their diploma, a cord to wear at graduation, and will be recognized at Honors Night.

FINE ARTS SKILLS DIPLOMA

PRELIMINARY SELECTION

You must have completed a Fine Arts Pathway and one more Fine Arts elective or CTAE elective.

**2 FINE ARTS RELATED
EXTRACURRICULAR
ACTIVITIES OR
EXPERIENCES:**

Activities that are fine arts related could be -

Examples:

- One Act Play
- School Musical
- Marching Band
- Jazz ensemble or other musical ensemble
- FFA or Agricultural competition
- Photography portfolio
- Fashion Design portfolio
- Interior Design project



**20 HOURS OF
DOCUMENTED
ARTS RELATED
COMMUNITY
SERVICE**

Examples:

Face painting at a school or community event

Preparing/participating in community haunted houses/zombie fests for charity

Caroling for cans (food drive)

Operation Graduation

Helping to re-design your neighbor's kitchen



A grayscale photograph of a hand holding a paintbrush, with the brush tip touching a canvas. The background is blurred, showing what appears to be a person's torso in a plaid shirt.

CAPSTONE
PROJECT

- Your Capstone Project should include a Fine Arts focus.



Please contact Joshua Saye or Lauren Watkins by email before October 1:

Joshua.saye@cherokee12.net

Lauren.Watkins@cherokee12.net

She will check your transcript and provide you with a packet needed for completion of the FADS expectations.

You will be required to complete all components and submit by: **March 1st**

INTERESTED IN FADS?

YOUR POST-SECONDARY GOAL?

Military service

Workforce

Technical College

Two-year college

Four-year college

Other

High school diploma critically important

- Very few spots are open for students without a high school diploma.
- To even be considered, recruits with a GED must have much higher scores on the ASVAB than recruits with diplomas.
- ASVAB testing at EHS is scheduled for December 6th, at 8:15 am in the Pod 2. Register online and email Ciarra.Malto@cherokeek12.net for questions. [Click here to register.](#)

For other requirements, see a recruiter from the branch of service in which you're interested.

ARMED FORCES

WORK FORCE

- What type of industry do you want to work in?
 - Do they have special training that's required for entry?
 - Is there a specific company you want to work for?
 - Do they have an application online?
 - Do they require a resume?
 - What is the long-term growth potential for this industry?
-
- Bureau of Labor Statistics Occupational Outlook handbook <https://www.bls.gov/ooh/>



WORK FORCE

Opportunities for Apprenticeships

Research trade jobs, manufacturing, and industries for benefits, training, and unions.

<https://www.apprenticeship.gov/career-seekers>

[**Paid Apprenticeships in Mechanical Trades**](#)



TYPES OF RESUMES

Chronological – Use when you have consistent career progression.

Functional – Use with little experience (less than 2 years), employment gaps, or *recent grads*. Focus on skills rather than lack of experience.

Hybrid – Use when you have more than 2 years of work experience, but less than 5, or are applying for a position in another industry.

<https://www.jobhero.com/resume/formats>



WORK FORCE: FUNCTIONAL RESUME

HIGH SCHOOL RESUME

135 Cherry St, Chicago, IL 60131 • (312) 994-7765 • your.name@gmail.com

OBJECTIVE

Driven high school student with a 3.8/4.0 GPA and excellent organizational and interpersonal skills. Seeking to apply my tutoring and mentorship skills to the Youth Development summer internship at [Company]. Possess proven communication skills and passion for advocacy that will support your organization's cause.

EDUCATION

West Ashley High School
Chicago, IL
Class of 2025

Relevant Coursework
Calculus
AP English

3.8 GPA, made Honor Roll Fall of 2022 & Spring of 2023
National Merit Scholarship Finalist

Extracurriculars
Mu Alpha Theta: Math Honor Society
Poetry Club

PROFESSIONAL EXPERIENCE

Virtual Math Tutor
EnCorps, Inc - Chicago, IL

Sep 2022 – Present

- Work with 3 students each semester to increase math comprehension through online study and tutoring sessions each lasting 2 hours
- Improved students' test scores by an average of 18% over the course of the semester
- Actively seek varied teaching methods to effectively cater to different learning styles, meeting each student where they are

Volunteer
The Academy Project - Chicago, IL

Jun 2021 – Aug 2022

- Volunteer twice weekly in reading remediation and mentoring programs, having worked with 15 foster children
- Assist children in reading and development of literacy skills, fostering a love of learning
- Provide support to children, serving as a source of stability in their daily lives

KEY SKILLS

- Mathematics
- Spanish and English
- Web and tech savvy, require little to no training
- Adaptability
- Self-motivation

<https://www.jobhero.com/resume/for/mats>

Prepare

Reflect a Job Posting's exact phrasing

Create an attention-grabbing objective statement or professional summary

List your Top Skills

List Work History in reverse chronological order

- <https://www.jobhero.com/resume/formats>

FUNCTIONAL RESUME ITEMS

GENERAL RESUME TIPS

Make your name and contact information stand out

Write an Impactful Objective

Keep it under 2 pages

Keep it professional

<https://www.jobhero.com/resume/formats>

TECHNICAL, 2 YEAR, OR 4-YEAR COLLEGE?

How do you decide which college is right for you?

- Who are you?
- What do you need to succeed?
- What's your admissions profile?
- How far from home do you want to be?
- How large a college do you want?
- What activities are available?
- What else is important to you?
- VISIT THE CAMPUS!

*Seniors can take two days for a college visit. The absences will be excused with a dated letter on letterhead from the college visited.

TECHNICAL, 2 YEAR, OR 4-YEAR COLLEGE?

Technical College:

- SAT/ACT not required.
 - Use Accuplacer exam to determine placement
- Qualifies for HOPE Grant
- Chattahoochee Tech is nearby

2 Year Community College:

- SAT/ACT may not be required: could use Accuplacer exam for placement
- School determines minimum GPA
- Nearby 2-year schools: Georgia Highlands & GSU Perimeter College

4 Year College:

Each college determines their minimum entrance requirements

Minimum GPA

ACT or SAT scores

Georgia 4-year colleges require:

- College Preparatory Curriculum requirements (2 years world language)
- Freshman Index requirement
- Minimum results on Test Scores

HOPE CAREER GRANT

Students interested in entering a field in which there are plenty of job openings can choose to enroll in one of **18 programs of study for which FREE TUITION is available!**

- Automotive Technology
- Certified Engineer Assistant
- Computer Programming
- Construction Technology
- Early Childhood Care and Education
- Health Science
- Logistics/Transportation Technology
- Practical Nursing
- Welding and Joining Technology
- Aviation Technology
- Commercial Truck Driving
- Computer Technology
- Diesel Equipment Technology
- Electrical Lineman Technology
- Industrial Maintenance
- Movie Production Set Design
- Precision Manufacturing
- Law Enforcement and Criminal Justice

*Must maintain a 2.0 once admitted

<https://tcsg.edu/free-tuition/>

Transferring to 4 Year Colleges: Georgia Perimeter to Georgia State University

Transition Students

If you're enrolled in an associate degree pathway at Georgia State's Perimeter College, we make it easy for you to move on to your bachelor's degree.

Once you complete 30 or more credit hours with at least a 2.0 grade point average at Perimeter College, you can seamlessly transition to the Atlanta Campus for access to the largest selection of bachelor's degree programs in the state. To be eligible, you'll need to submit a Transition Application.

<https://admissions.gsu.edu/bachelors-degree/apply/#transition>

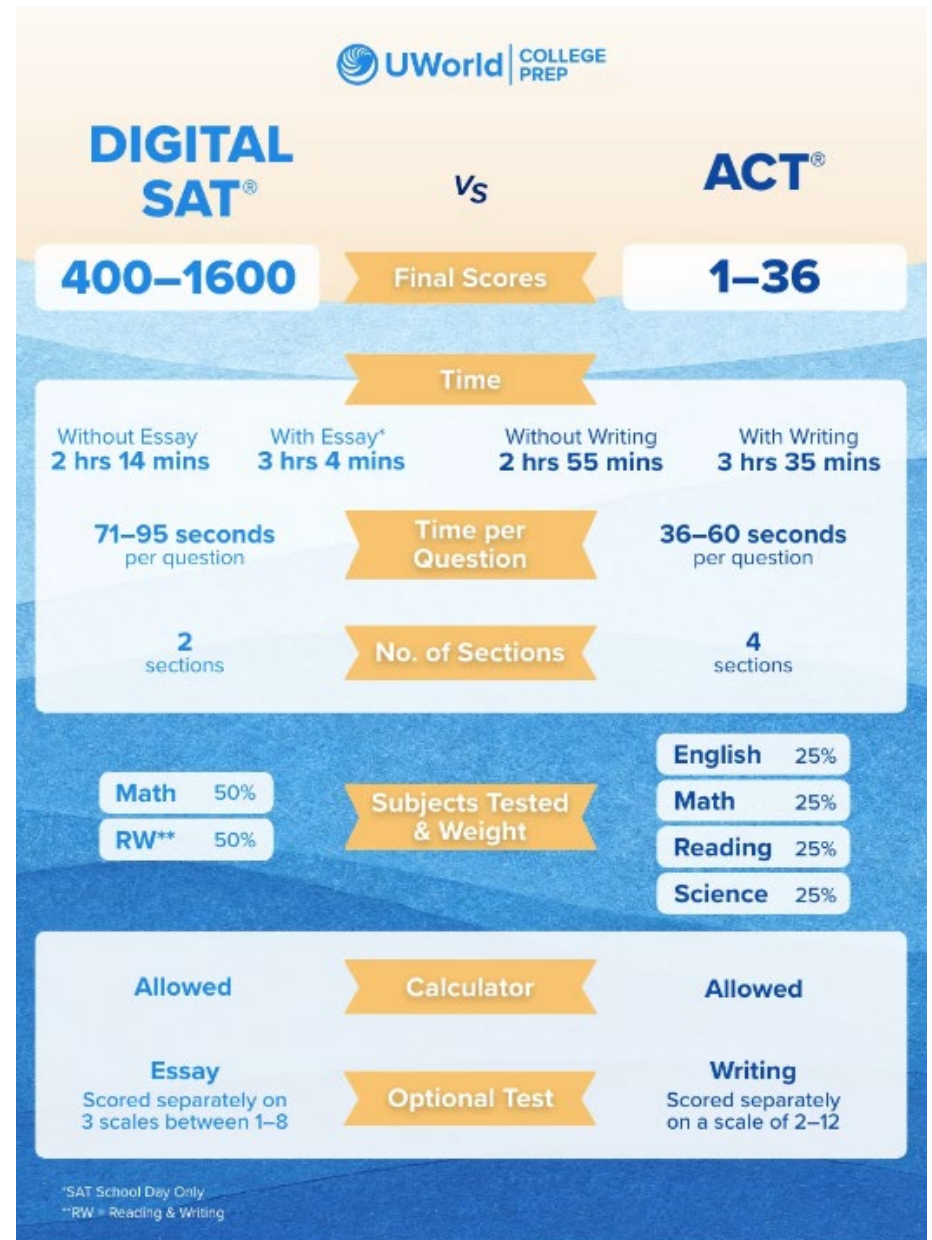
**2 YEAR
COLLEGES**

SAT/ACT can be taken multiple times

Usually required to apply to colleges and universities (not required for technical colleges)

College-bound Seniors should try to take fall semester, if possible, to meet application deadlines

SAT vs. ACT: both are recognized at MOST colleges and universities



ACT DATES

2024-2025 National Test Dates Schedule

Test Date	Regular Registration Deadline Late Fee Applies After This Date	Late Registration Deadline	Photo Upload and Standby Deadline
September 14, 2024	August 9	August 25	September 6
October 26, 2024	September 20	October 7	October 18
December 14, 2024	November 8	November 22	December 6
February 8, 2025	January 3	January 20	January 31
April 5, 2025	February 28	March 16	March 28
June 14, 2025	May 9	May 26	June 6
July 12, 2025*	June 6	June 20	July 4

EHS DATES

***9/14; *10/26; *2/8; *4/5**

SAT DATES

EHS DATES

10/30 School Day

SAT Test Date*	Registration Deadline	Deadline for Changes, Regular Cancellation, and Late Registration**
Aug 24, 2024	Aug 9, 2024	Aug 13, 2024
Oct 5, 2024	Sept 20, 2024 Register	Sept 24, 2024
Nov 2, 2024	Oct 18, 2024 Register	Oct 22, 2024
Dec 7, 2024	Nov 22, 2024 Register	Nov 26, 2024
Mar 8, 2025	Feb 21, 2025 Register	Feb 25, 2025
May 3, 2025	Apr 18, 2025 Register	April 22, 2025
June 7, 2025	May 22, 2025 Register	May 27, 2025

*Students [who need to borrow a device from College Board](#) will need to register and request their device earlier than the registration deadline—at least 30 days before test day.

**Late registration is available worldwide. [Additional fees apply.](#)

FREE TO ATTEND!

GEORGIA



College **Probe** **Fair**

SEPTEMBER 9TH

**CHEROKEE
HIGH
SCHOOL
NORTH CAFE &
NORTH GYM**

Your chance to speak to
the representatives from
75+ participating colleges

6:00-8:00 PM

**930 Marietta Hwy
Canton, GA 30114**

www.gaprobe.org



In-Person Sessions

(All times listed are in Eastern Time)

Suwanee – Tuesday, August 27: 6:00-8:00 p.m.

Athens – Thursday, August 29: 6:00-8:00 p.m.

Norcross – Tuesday, September 3: 6:00-8:00 p.m.

Atlanta – Thursday, September 5: 6:00-8:00 p.m.

Augusta – Thursday, September 5: 6:00-8:00 p.m.

Dublin – Tuesday, September 10: 6:00-8:00 p.m.

Savannah – Thursday, September 12: 6:00-8:00 p.m.

Valdosta – Thursday, September 12: 6:00-8:00 p.m.

Warner Robins – Tuesday, September 17: 6:00-8:00 p.m.

Griffin – Tuesday, September 17: 6:00-8:00 p.m.

Albany – Thursday, September 19: 6:00-8:00 p.m.

Douglas – Thursday, September 19: 6:00-8:00 p.m.

Rome – Tuesday, September 24: 6:00-8:00 p.m.

Columbus – Thursday, September 26: 6:00-8:00 p.m.

Mount Airy – Thursday, September 26: 6:00-8:00 p.m.

Georgia Virtual Sessions

(All times listed are in Eastern Time)

Wednesday, August 28: 6:00-7:00 p.m.

Wednesday, September 4: 6:00-7:00 p.m.

Wednesday, September 11: 6:00-7:00 p.m.

<http://www.peachstatetour.org/students.html>

SENIOR INFO NIGHT WITH COLLEGE FAIR AND FUTURE FAIR@ EHS!

Date – Thursday, September 5th

Time- 6pm Presentation; 6:30 Meet with
College and Career Reps

Colleges, Trade, and Apprenticeships

Apply for free/reduced lunch...it's not all about the lunch

I'VE GOT MY LIST OF COLLEGES — WHAT'S NEXT

(STRETCH SCHOOL, I
THINK I HAVE THIS
SCHOOL, IN THE BAG
SCHOOL)

Before you apply make sure you're eligible.

Have you taken the ACT or SAT?

- Register directly with the testing agencies!
www.collegeboard.org & www.actstudent.org
- Check with the colleges to which you are interested in applying to determine the final test date accepted for admissions.

Do you meet the grade requirements? What is your Academic GPA?

- Colleges individually decide how they calculate their admissions academic GPA.
- Typically, basis is English, Math, Science, Social Studies, and World Language courses.
- Most will calculate an unweighted GPA on a 4.0 scale
 - ❑ Determine the additional requirements of the application:
 - ❑ Counselor or Teacher recommendation?
 - ❑ Essay?

2024 FRESHMAN ADMITS

UGA Calculated Grade Point Average mid-range/average: 4.05 – 4.33 *Please remember this is not the GPA students see on their high school transcript, but rather the GPA that UGA recalculates for everyone based on the core academic courses taken in high school and looking at the actual grades posted on the transcripts. Roughly 91% of the HS core grades were A's, and 8+% were B's, thus showing the academic strength of the accepted group.*

AP/IB/Dual Enrollment course mid-range/average: 8-13 courses, average of 10+

• *We determine academic rigor based on all core classes a student has taken (CP, Honors, Advanced, AP, IB, DE, etc.) as compared to what is offered in the school/community. This is not based simply on the number of AP/IB/DE courses, but instead we look at the overall coursework over four years in the core areas and the progression of rigor over the years. The AP/IB/DE information is the most specific data I can give on it, but the numbers do not cover all of our curriculum review.*

SAT Total mid-range for students: 1270-1470

• *This data is based on admitted students where the SAT was the strongest score if both SAT and ACT were submitted or if the SAT was the only test taken and sent.*

ACT Composite mid-range for students: 29-34

• *Remember, UGA focuses on ACT E and M. For reporting purposes, we give out the best score overall ACT score, but the ACT E and M are very similar to the overall score.*

• *This data is based on admitted students where the ACT was the strongest score if both SAT and ACT were submitted or if the ACT was the only test taken and sent.*



UNIVERSITY OF GEORGIA

Undergraduate Admissions



Holistic Application Review

Academic Preparation	Contribution to Community	Personal Essays	
Letters of Recommendations	SAT/ACT Scores	Interview for Non-Native English Speakers	Institutional Fit



[Georgia Southern University Admissions Info](#)

[Georgia State University Admissions Info](#)

[Albany State University Admissions Info](#)

[Georgia Military College Admissions Info](#)



[Click here to find Georgia's College and University Admissions Requirements](#)

NOW APPLY!


The Common Application: Fill out one form for multiple participating colleges

- Check to see if your schools are available
- www.commonapp.org

Through GAfutures.org

Through the individual college website



A hand holding a pen is positioned over a keyboard and a document. The background is a blurred image of a person writing on a document.

YOU MAY BE ASKED TO...

Submit an essay:

- Not every college application requires an essay.
- Number one rule from college admissions officers – PROOFREAD and FOLLOW DIRECTIONS.
- Be yourself in your essay!

<https://www.collegeessayguy.com/college-essay-resources> **FREE ESSAY RESOURCES**



**YOU MAY
BE ASKED
TO...**

Submit a Transcript

Transcripts can be requested:

www.gafutures.org


- In-State participating schools only
- FREE!!!

www.parchment.com

- In or Out of State Colleges
- Around \$5.90 per request

Before submitting your
transcript check it for
accuracy. VERY
IMPORTANT FOR HOPE
ELIGIBILITY

Submit a Counselor Recommendation: Located on the Senior Canvas Page and Student Services Webpage



Not required for all college applications



Counselor Recommendation Request packets must be dropped off or emailed to your counselor two working weeks prior to due date.

**YOU MAY
BE ASKED
TO...**

There is a Counselor Recommendation Request packet under senior info on the EHS website that is required to be submitted to your counselor's email before a recommendation will/can be written.

Counselor Recommendation Form

List each application requiring a recommendation with due dates

- Make sure you link your counselor
- Need another recommendation later?

This is the only form you need to turn in again.

COLLEGE/UNIVERSITY or SCHOLARSHIP NAME:	DEADLINE:	Method to Submit Recommendation examples: common application, college website, coalition application, email, mail, etc.

COUNSELOR RECOMMENDATION

Self-Assessment Form (REQUIRED)

Answer questions and tell us all about yourself!

Use this information to create your resume

School Clubs and Activities

PLEASE spell out acronyms and describe what the club/activity represents

Club/Activity	Years of Participation	Main Duties/Accomplishments

COUNSELOR RECOMMENDATION

Parent Rating Form

RECOMMENDED, but will not delay recommendation if not turned in.
Parents can email the form directly to your school counselor.

1. Please describe your child in 3 or 4 adjectives and explain why you chose those words.
2. What are some significant ways in which your child has changed since entering high school?
3. Describe a characteristic or accomplishment that we might not know about - something that won't show up on your child's activity record.
4. How has your child overcome obstacles/adversity and demonstrated strength, courage, or resiliency?
5. What is something your child might not tell us, but you feel is important for us to know?

COUNSELOR RECOMMENDATION

To receive a teacher recommendation, you will need to ask a teacher who knows you well enough to write about you.

Deal directly with the teacher!

- Talk with the teacher to see what he/she requires from you in order to write a recommendation and let your teacher know that they will be receiving a link to upload your recommendation.
- Follow-up with a thank-you note!



TEACHER RECOMMENDATION

I'VE APPLIED. WHAT NOW?

Once you are notified of acceptance by letter or email to your dream college, you'll be expected to pay for it. The college will communicate with you directly on deadlines for housing, meal plans, financial aid and orientation.

Funding Sources:

- Federal - FAFSA: <https://studentaid.gov/>
 - Application for 25-26 is not open yet. It should open Dec. 1st.

Institutional

- Specific college Financial Aid website
- Departmental
- Business school, Music Department, etc.
- Private-Etowah High School/ Student Services/ Scholarships



FINANCIAL AID

Because your **financial aid package** is created for you and is based on the cost of attending a particular school, your aid amounts will vary from school to school.

Figuring Out Net Price

Follow these easy steps to figure out your **net price**, or net cost, for each school, and find out which school will be most affordable for you.

- First, find the cost of attendance for your program on the aid offer. If the school doesn't list the cost of attendance on the aid offer, ask the **financial aid office** for this figure. Make sure it includes amounts you will pay to the school directly (such as tuition and fees) as well as other costs (such as living expenses, books and supplies, and transportation).
- Next, subtract the grant and scholarship amounts on your aid offer from the cost of attendance amount. Also subtract any savings you have available to put toward your school costs for the school year. The **remaining amount** is your net or out-of-pocket cost.
- Compare the net costs for the schools you are considering. The net cost is the amount you will have to pay out of your pocket, using earnings from work or **loan** funds that you borrow.

<https://studentaid.gov/complete-aid-process/comparing-aid-offers>



Virtual Financial Aid Night

October 16th, 2024

A representative from the Georgia Student Finance Commission will answer questions related to FAFSA, HOPE, LOANS, GRANTS, etc.

Join on your computer, mobile app or room device

[Click here for Financial Aid Night on October 16th, 7PM](#)



FINANCIAL AID NIGHT

HOPE AND ZELL MILLER SCHOLARSHIP

SSN Verification:

- Social Security numbers are required to be in ASPEN for a student to be HOPE eligible.

Rigor Requirement

- 4 courses complete prior to graduation (examples: Advanced Algebra or higher, Chemistry, Physics, Astronomy, Zoology, 2nd year of Foreign Language or higher, AP Courses)

HOPE Scholarship:

- 3.0 academic GPA, covers The new rule states that HOPE will cover “100%” of tuition, but there are caveats.
- This is the information that was shared with us:
- HOPE will cover the current year at 100% of the *prior* year tuition amount. Example: the 2024 year of college gets covered at 2023 tuition rate under HOPE, the 2025 year gets covered at the 2024 rate. If the rates are the same from one year to the next, HOPE funds at 100%; if the rates change from one year to the next then HOPE only covers the amount equal to the *prior* year.

Zell Miller scholarship:

- 3.7 academic GPA—covers 100% of tuition
- SAT 1200 combined CR and Math or 25 ACT composite

www.GAFutures.org

HOPE AND ZELL MILLER SCHOLARSHIP

1. HOPE:

3.0 Core GPA (AP classes weighted +.5 up to 4.0)

Students must maintain a 3.0 GPA in college

HOPE GPA IS NOT ROUNDED!
2.9999 is ineligible!!!

To apply for HOPE/Zell, FAFSA or GSFAPP

*HOPE/Zell Application

2. Zell Miller:

- 3.7 Core GPA (add .5 weighting for AP courses up to 4.0)
- Students must maintain a 3.3 GPA in college
- Students who drop below the college 3.3 GPA can earn Regular HOPE if their college GPA remains above 3.0
- **NOT ROUNDED: 3.6999 will receive HOPE, not Zell Miller**
- You must submit your SAT or ACT scores to the GA Student Finance Commission for Zell

*Test Score Submission Information



HOPE Scholarship Rigor Requirements

Four of these courses required prior to graduation

Requirement	Examples
Advanced Math	Advanced Algebra, Adv. Financial Algebra, Statistical Reasoning, Pre-Calc, Calculus, Honors Multi Variable Calculus
Advanced Science	Chemistry, Physics, Forensics, Anatomy, Astronomy, Zoology
AP Core Courses	AP English, AP Math, AP Science, AP Social Studies, AP Computer Science, AP Psychology
Dual Core Courses	Various Courses
Advanced World Lang	Spanish, French, German, (2,3,4 and AP)



SCHOLARSHIPS

DON'T PAY TO SEARCH OR VIEW SCHOLARSHIPS

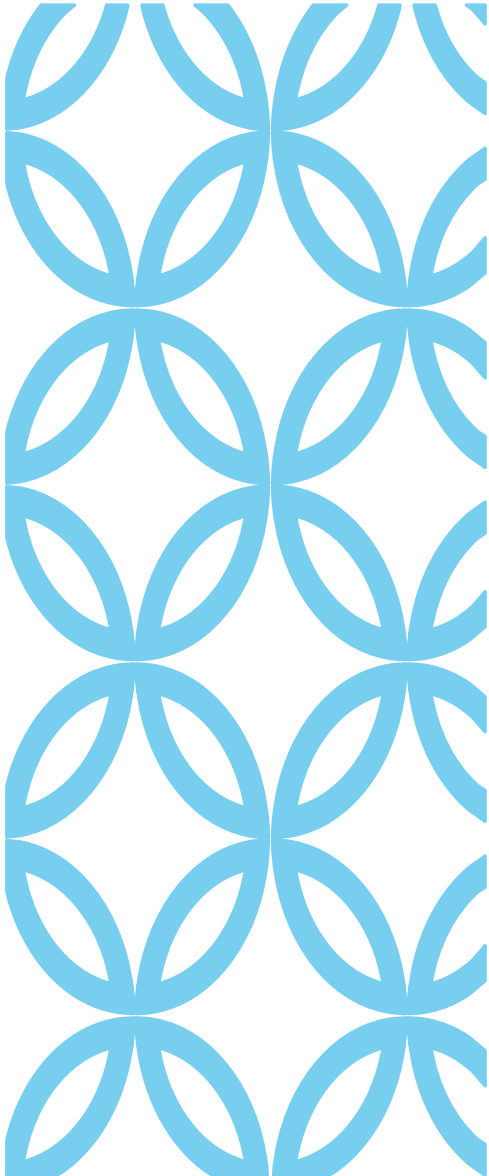
- www.fastweb.com
- www.collegescholarships.com
- www.gafutures.org
- and MANY OTHERS

The amount of scholarship money awarded is directly proportional to the amount of time spent searching and applying

fastweb!

GAfutures
Explore. Plan. Succeed.

 CollegeScholarships.com



Electronic Scholarship Library

[_Scholarships - 2024.xlsx](#)

Weekly student newsletter sent on Fridays through parent square

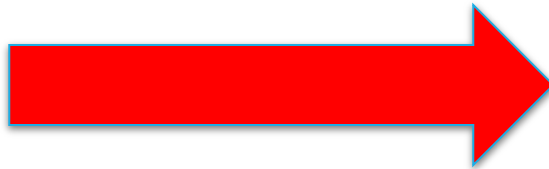
SCHOLARSHIPS

RESOURCES: EHS SENIOR INFO ON THE COUNSELOR CANVAS PAGE

A-Z Senior Reference Guide

Counselor Rec Packet

This classroom presentation



<https://bigfuture.collegeboard.org/>

[Georgia Match](#)



GRADUATION

TBD

First Baptist Church of
Woodstock

Ceremony live streamed
<https://fbcw.org/>



POST-TEST QUESTION # 1

You have finished high school with a core academic GPA of 3.2 and you have an SAT score of 1400 (combined Critical Reading and Math). You qualify for:

- A. The HOPE Scholarship
- B. The Zell Miller Scholarship
- C. The Robert Byrd Honors Scholarship
- D. National Merit Scholarship

POST-TEST QUESTION # 2

In order to complete your college application to Auburn University, you need to send an official transcript. You should:

- A. Send a copy of the one you received in TAA.
- B. Email your counselor to send your official transcript.
- C. Visit Gafutures.org to send your transcript.
- D. Visit parchment.com pay and \$5.65 to send it electronically to out of state colleges.

POST-TEST QUESTION # 3

How many credits do you need to graduate if you entered high school in 2021?

- A. 24
- B. 22
- C. 23
- D. 23, but 24 to graduate with distinction

POST-TEST QUESTION # 4

Which of the following is the correct method for calculating the HOPE GPA?

- A. Core subject classes and world language classes; 4.0 scale; un-weighted except for AP classes (given an additional .5 quality point, with the exception of A's).
- B. All classes; 4.0 scale, un-weighted except for AP classes (given an additional .5 quality point, with the exception of A's).
- C. Core classes; 5.0 scale, Honors and AP classes weighted with an additional .5 quality point.
- D. All classes; 4.0 scale; un-weighted except for AP classes (given an additional .5 quality point).

SMART MONEY CHOICES



[Student Loan Trouble](#)

[After College Loan Debt](#)

YOUR QUESTIONS?

