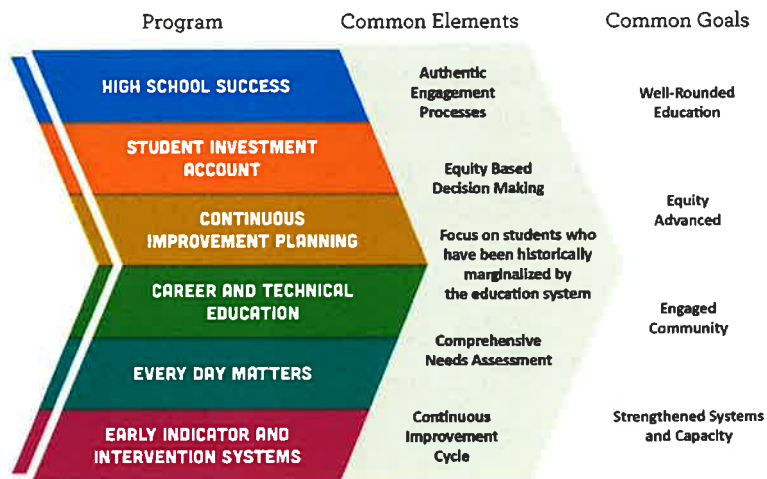


# Philomath School District 17J

## Integrated Guidance Grant

Philomath SD Board of Directors  
January 18, 2024

### What is Integrated Guidance?



## Integrated Guidance History

### 2022 - 2023

- ▶ Independent Applications
  - ▶ CTE (Career & Technical Education)
  - ▶ EIS (Early Indicator & Intervention Systems)
  - ▶ High School Success
  - ▶ SIA (Student Investment Account)

### 2023 - 2024

- ▶ Single, Integrated Application
  - ▶ CTE (Career & Technical Education)
  - ▶ EIS (Early Indicator & Intervention Systems)
  - ▶ Every Day Matters (Attendance)
  - ▶ High School Success
  - ▶ SIA (Student Investment Account)

## Presentation Purpose

- ▶ Share information about the Philomath School District Integrated Guidance activities and application.
- ▶ Provide an opportunity for Board member questions and public comment on the activities and application.
- ▶ Request Approval:
  - ▶ 2022-2023 Final Reporting
  - ▶ 2023-2024 Integrated Guidance Plan

## Integrated Guidance Outcomes 2022-2023

▶ Grant Totals:

Program	Amount
Early Indicator & Intervention Systems (EIS)	\$ 4,631.00
High School Success (HSS)	\$ 399,145.03 ** \$ 483,470.00
Student Investment Account (SIA)	\$1,078,036.37

\*\* Plus 2021-2022 Carry-Over of \$84K

## Key Activities

- ▶ Early Indicator and Intervention Systems
  - ▶ Synergy Student Information System (SIS)
  
- ▶ High School Success (Measure 98)
  - ▶ Career and Technical Education
  - ▶ Data Team Implementation
    - ▶ Teacher Collaboration Around Student Data
    - ▶ Systems to Support On-Time Graduation
    - ▶ Equitable Assignment to Advanced Courses
  - ▶ PLC (Professional Learning Communities) Professional Learning

## Key Activities

- ▶ Student Investment Account
  - ▶ Behavior/ Mental Health Support Staff (1.0 FTE Licensed and 2.0 FTE Classified)
  - ▶ District Projects/ School Improvement Specialist (1.0 FTE)
  - ▶ ELD (English Language Development) Support Staff (1.0 FTE Classified)
  - ▶ Instructional Assistant Support (4.0 FTE Classified)
  - ▶ Extra-Curricular Fee Reduction (Middle and High School)
  - ▶ Literacy Intervention Materials
  - ▶ PLC (Professional Learning Communities) Professional Learning (High School Focus)
  - ▶ Professional Learning (Equity, RTIi, SEL)
  - ▶ RTIi (Response to Instruction and Intervention) Specialists (3.0 FTE Licensed)
  - ▶ SEL (Social Emotional Learning) Instructional Materials
  - ▶ Student School Supplies and Fees

## Integrated Guidance Plan 2023-2024

- ▶ Grant written for the 2023-2025 biennium. (\$3,266,729.36)
  - ▶ Includes EIIS, HSS, and SIA: EDM activities assumed in these accounts.
    - ▶ 2023-2024: \$1,749,112.45
    - ▶ 2024-2025: \$1,517,616.91\*\*
  - ▶ Regional allocation for CTE, managed by Linn-Benton Community College.
  - ▶ KVCS Allocation: \$259,254.46 + \$221,074.28\*\* = \$480,328.74

\*\* 2024-2025 Amounts Not Yet Updated

## Integrated Guidance Plan 2023-2024 Progress Markers

- ▶ Community Engagement
- ▶ Equity Tools
- ▶ Data Teams
- ▶ Literacy Assessment Inventory
- ▶ Communication
- ▶ Student Voice
- ▶ Strengths-Based Intervention Systems
- ▶ Literacy Plans
- ▶ 9<sup>th</sup> Grade On-Track
- ▶ School Climate
- ▶ Community Partnerships
- ▶ Financial Stewardship
- ▶ Balance Student Assessment
- ▶ Address Systemic Barriers
- ▶ Welcoming & Safe Schools

## Proposed Activities and Budget

Investment/ Activity	Amount
RTIi Specialists (4.0 FTE Licensed)	\$407,700
ELD (English Language Development) Support Staff (1.0 FTE)	\$ 50,200
Instructional Assistant Support (6.5 FTE Classified)	\$145,000
CTE Coordinator (0.5 FTE)	\$ 55,000
CTE Services & Supplies (Printer, Clothing Closet, Food Handlers Cards, TB Testing for Health Occupations)	\$ 1,400
CTE Equipment (Manufacturing Technology)	\$ 7,327
Credit Recovery Support (1.0 Classified)	\$ 45,000
Career Day (Philomath Academy and Philomath Middle)	\$ 4,000
8 <sup>th</sup> Grade Success Coach (1.0 FTE Licensed)	\$ 84,000
Instructional Intervention Materials	\$ 5,000
Effective Instructional Programs Materials (Literacy & Math)	\$108,535
Reduce Extracurricular Fees (Athletics, Drama)	\$ 89,100

## Proposed Activities and Budget (cont.)

Investment/ Activity	Amount
Summer Bridge Program (8 <sup>th</sup> to 9 <sup>th</sup> Grade)	\$ 24,000
Freshman Success Class	\$ 35,000
School Supplies for Students	\$ 60,000
Data Management (Synergy and SmartPass)	\$ 4,165
School Improvement and District Projects	\$200,995
Student Technology (Chromebooks and ClearTouch Panels)	\$ 55,000
Philomath Academy Staff (1.5 FTE Licensed)	\$126,600
Student Assessment Fees (AP and SAT/ACT)	\$ 7,500
Equity of Student Outcomes and Opportunities	\$ 15,000
LBCC Tuition Support	\$ 10,000
High School Success (including CEL)	\$ 15,000
Equity Team Support	\$ 5,000

## Proposed Activities and Budget (cont.)

Investment/ Activity	Amount
SEL (Social Emotional Learning) Instructional Materials	\$ 7,500
Behavior/ Mental Health Support Staff	\$ 75,000
Family Support Liaison	\$ 25,000
School Psychologist	\$ 78,750

### CTE Supports:

You Science Career Aptitude and Interest Survey	Perkins Funding
Business Equipment and Supplies	Perkins Funding
Culinary Equipment and Supplies	Perkins Funding
Health Occupations Equipment and Supplies	Perkins Funding