

To check redistricting scenarios for your street address
please use the [Find Your School Website](#)



Stafford County Public Schools

Inspire | Empower | Excel

High School #6 Redistricting



Community Meeting#1
September 3 , 2024



Stafford County Public Schools

Inspire | Empower | Excel

Tonight's Objectives

- Background on HS#6
- Why is Redistricting Necessary?
- Redistricting Goals
- Factors to Consider
- “Initial” Boundary Scenarios
- Group Discussion / Q & A
- Next Steps and Feedback Process



VIEW IN MEDIA CENTER



Background on HS#6

- HS#6 opens August 2026
- Spans over 290,000 sq. ft.
- Provides **2,150 seats**
- Helps alleviate crowding



Stafford County Public Schools

Inspire | Empower | Excel

Why is Redistricting Necessary?

- Steady population growth and new housing developments
- An influx of students and crowded schools
- Balancing enrollment to better distribute student populations
- Make effective use of **new** and *existing seats*



VIEW IN DINING COMMONS



Stafford County Public Schools

Inspire | Empower | Excel

Redistricting Goals

Academic:

- High quality learning environment
- Improve instructional effectiveness

Social:

- Minimize disruption
- Keeping communities together

Transportation:

- Further optimize bus routes
- Reduce travel times



VIEW IN DINING COMMONS



Stafford County Public Schools

Inspire | Empower | Excel

Factors to Consider (per Policy 1403)

Any or all of these factors *may be* relevant in a redistricting process:



- Proximity of schools to student residences,
- Forecasted school enrollment and capacity,
- Walking distances,
- Busing times and costs,
- Walking and busing safety,
- Natural and man-made geographic features,
- Impact on neighborhoods, School feeder patterns,
- Contiguous school attendance areas,
- Capital Improvement Plan,
- Enrollment Accommodation Plan,
- Socioeconomic characteristics of school populations,
- Distribution of programs and resources,
- Overall impact on families and students,
- Comparative long-term costs,
- Parental input
- Frequency of previous changes for affected neighborhoods.



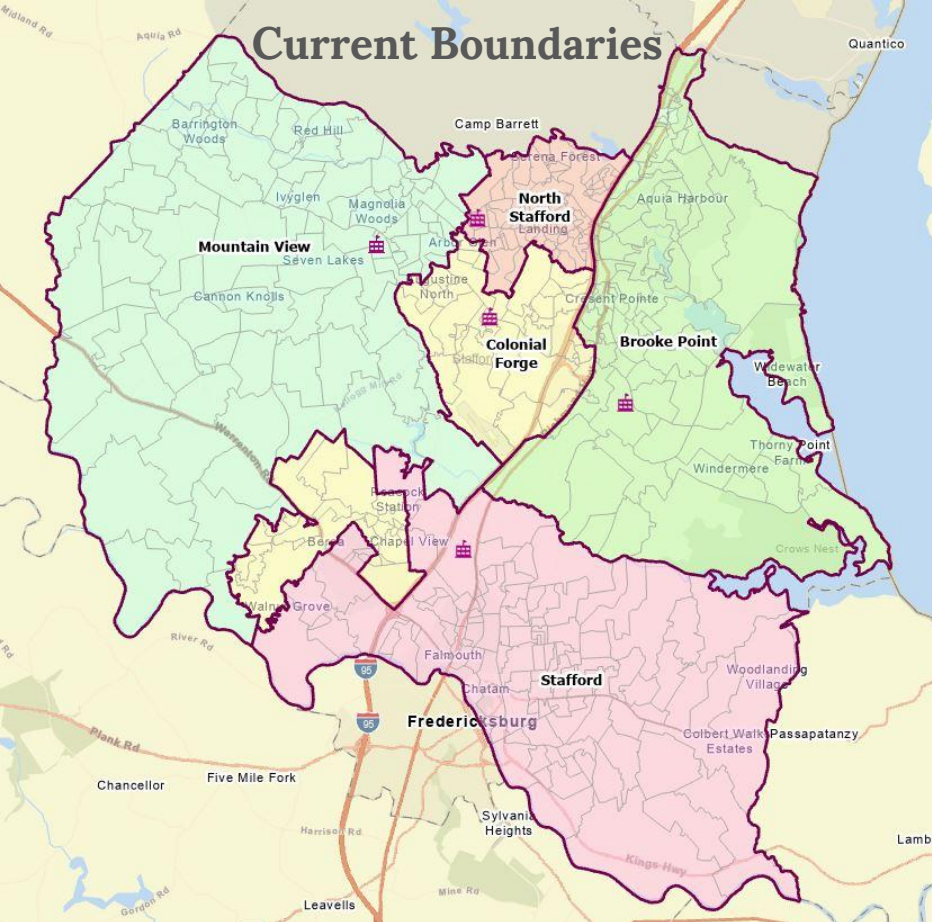
Initial Boundary Scenarios



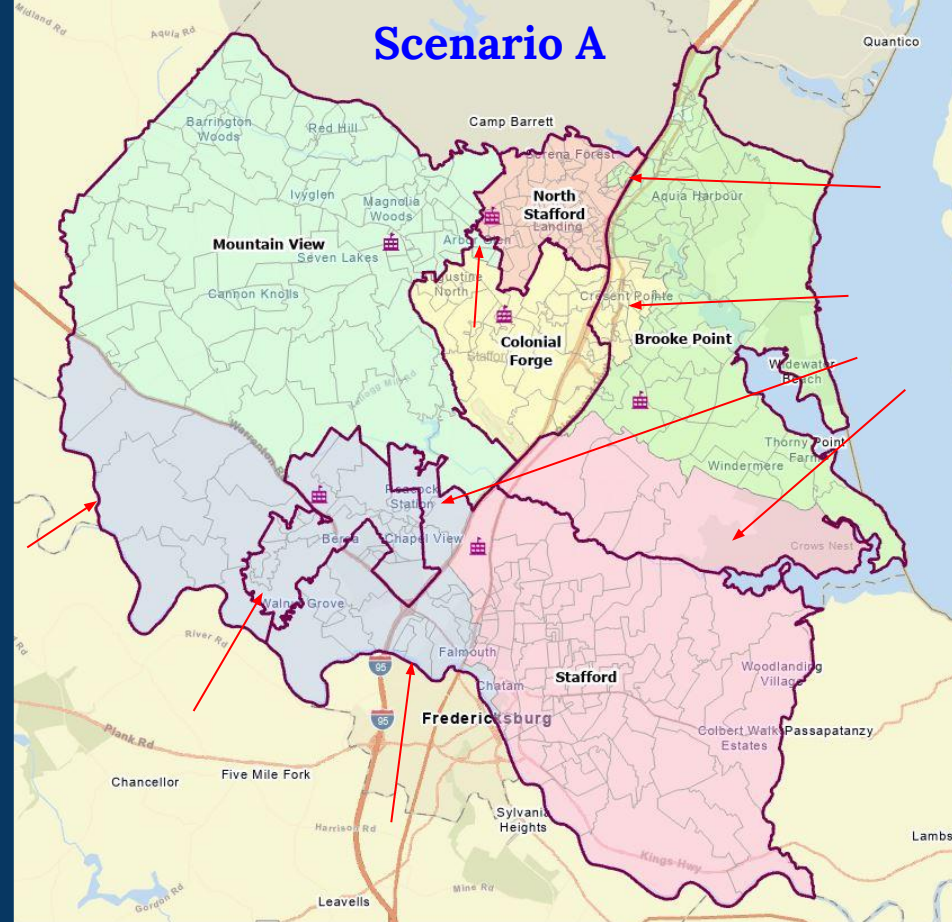
Stafford County Public Schools

Inspire | Empower | Excel

Current Boundaries



Scenario A



Stafford County Public Schools

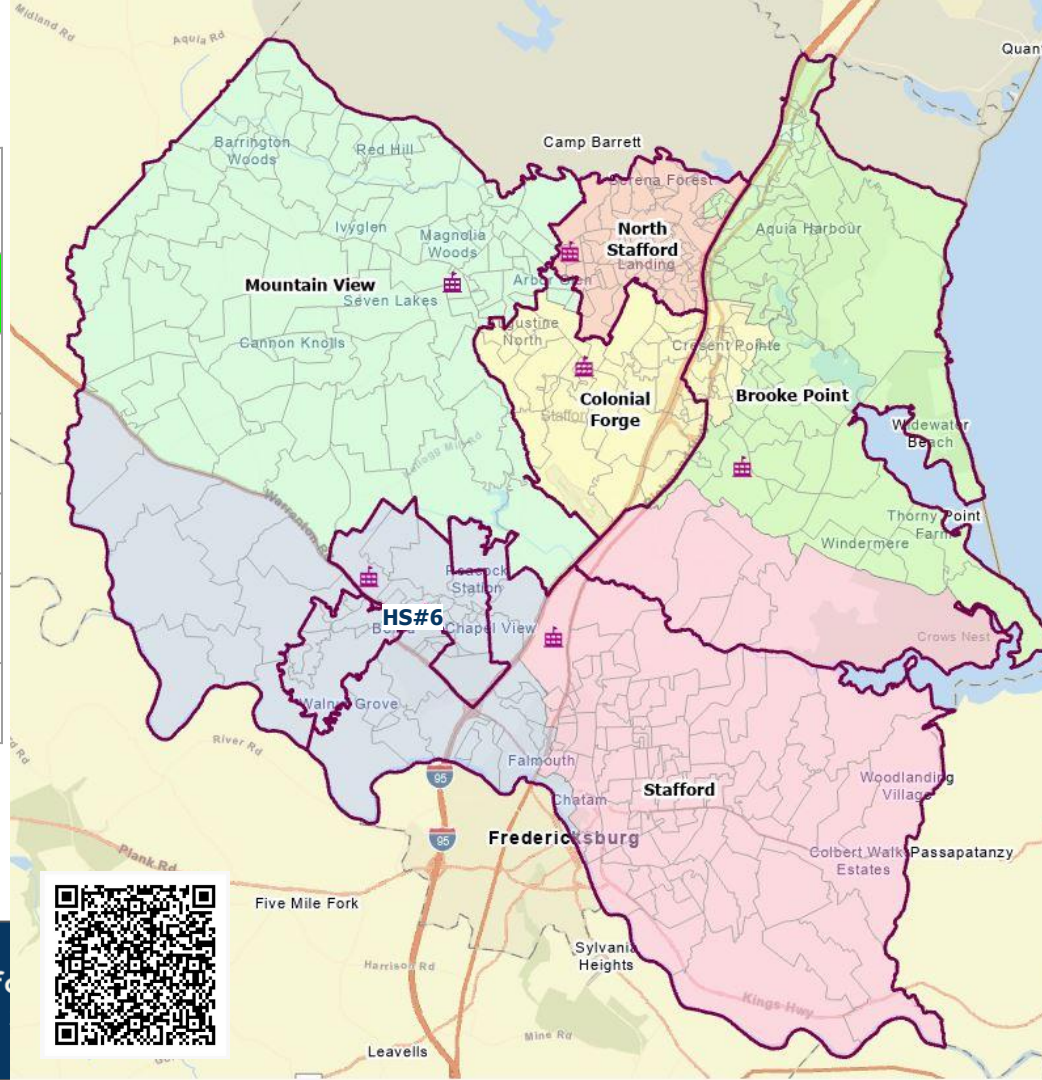
Inspire | Empower | Excel

Scenario A

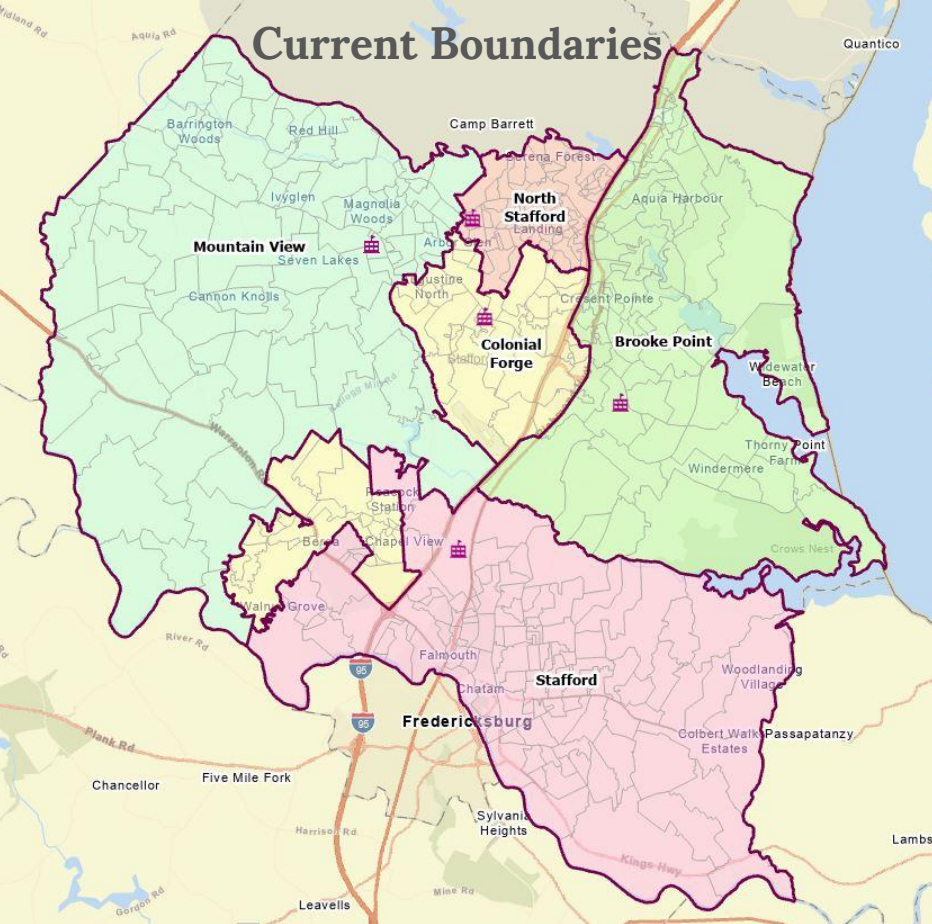
FRL = Free & Reduced Lunch
b/c = Boundary Change

High School	Capacity Before b/c 2026	Capacity After b/c 2026	Capacity After b/c 2029	Capacity After b/c 2032	FRL% Before b/c	FRL% After b/c
North Stafford	105%	85%	91%	105%	57%	56%
Brooke Point	108%	88%	94%	106%	51%	52%
Colonial Forge	98%	88%	90%	99%	37%	38%
Mountain View	99%	89%	91%	93%	37%	38%
Stafford	108%	90%	92%	98%	49%	46%
HS#6	N/A	77%	88%	100%	N/A	47%

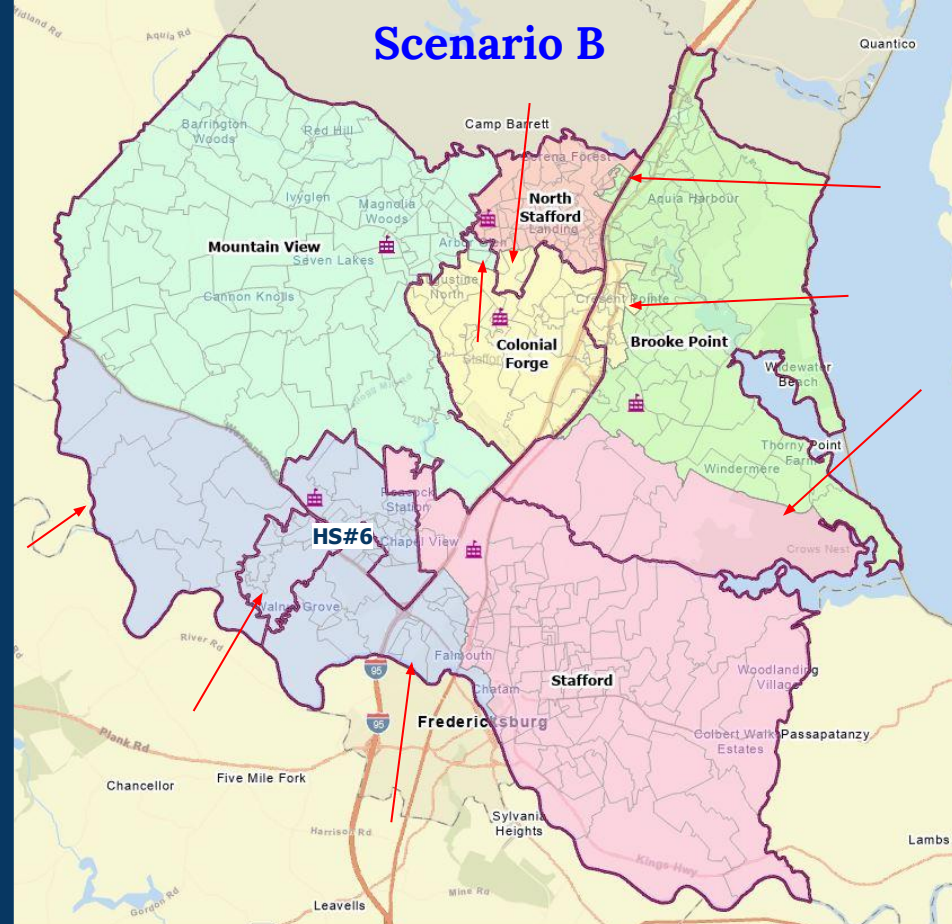
- 79% of planning units not reassigned (327)
- 21% of planning unit reassigned (89)
- 59 planning units reassigned to HS#6



Current Boundaries



Scenario B



Stafford County Public Schools

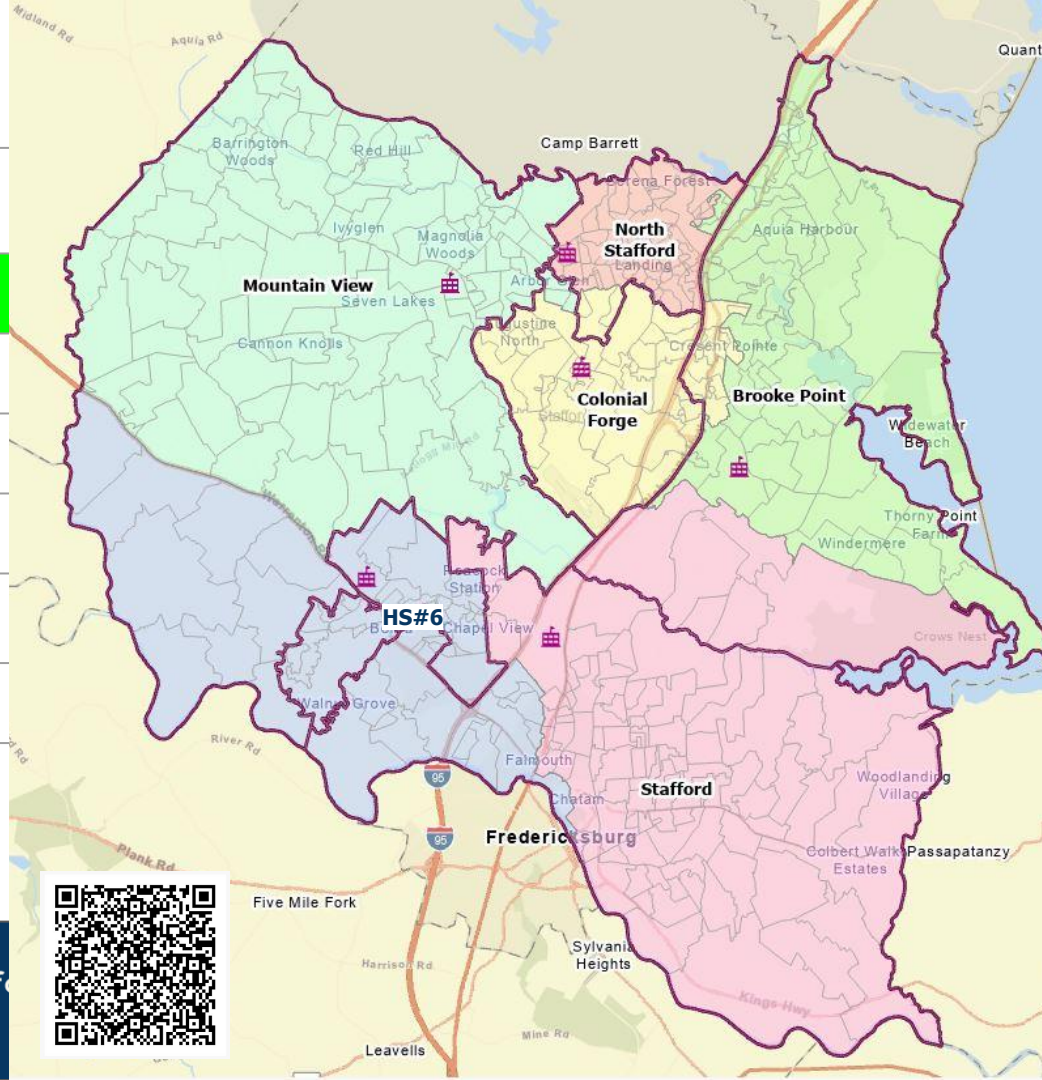
Inspire | Empower | Excel

Scenario B

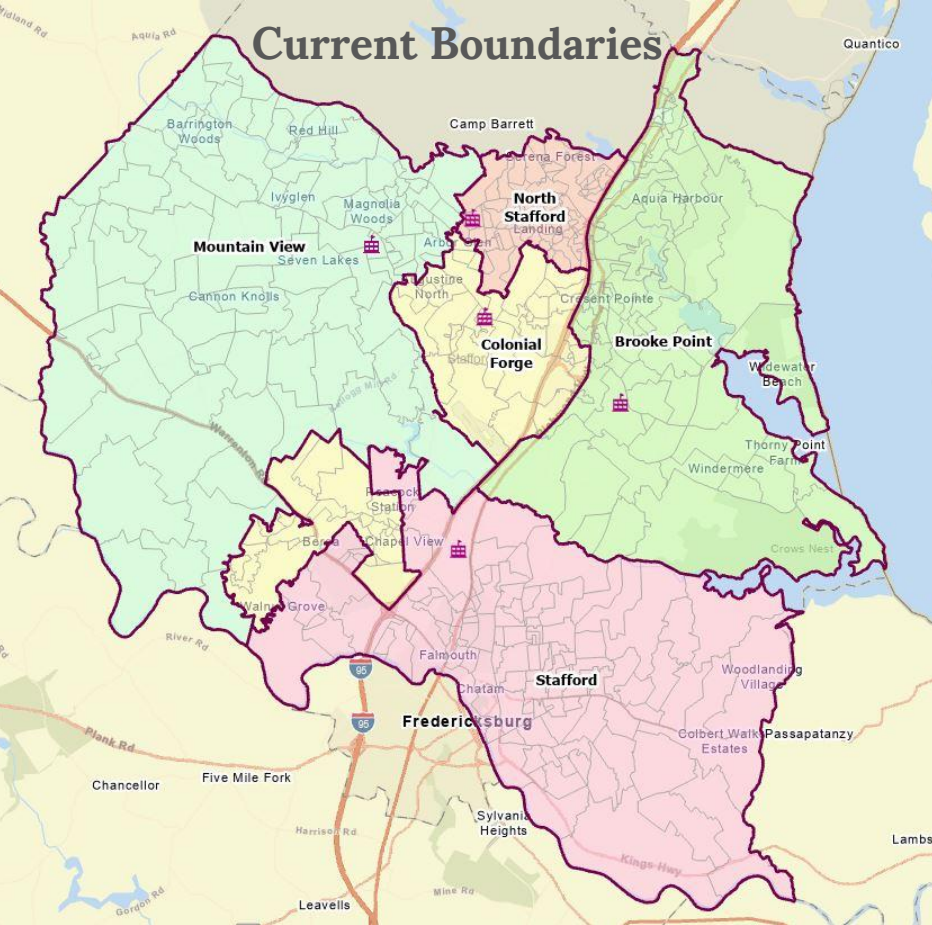
FRL = Free & Reduced Lunch
b/c = Boundary Change

High School	Capacity Before b/c 2026	Capacity After b/c 2026	Capacity After b/c 2029	Capacity After b/c 2032	FRL% Before	FRL% After
North Stafford	105%	88%	92%	107%	57%	59%
Brooke Point	108%	85%	93%	104%	51%	49%
Colonial Forge	98%	88%	91%	98%	37%	38%
Mountain View	99%	89%	91%	93%	37%	38%
Stafford	108%	92%	95%	101%	49%	46%
HS#6	N/A	75%	86%	96%	N/A	47%

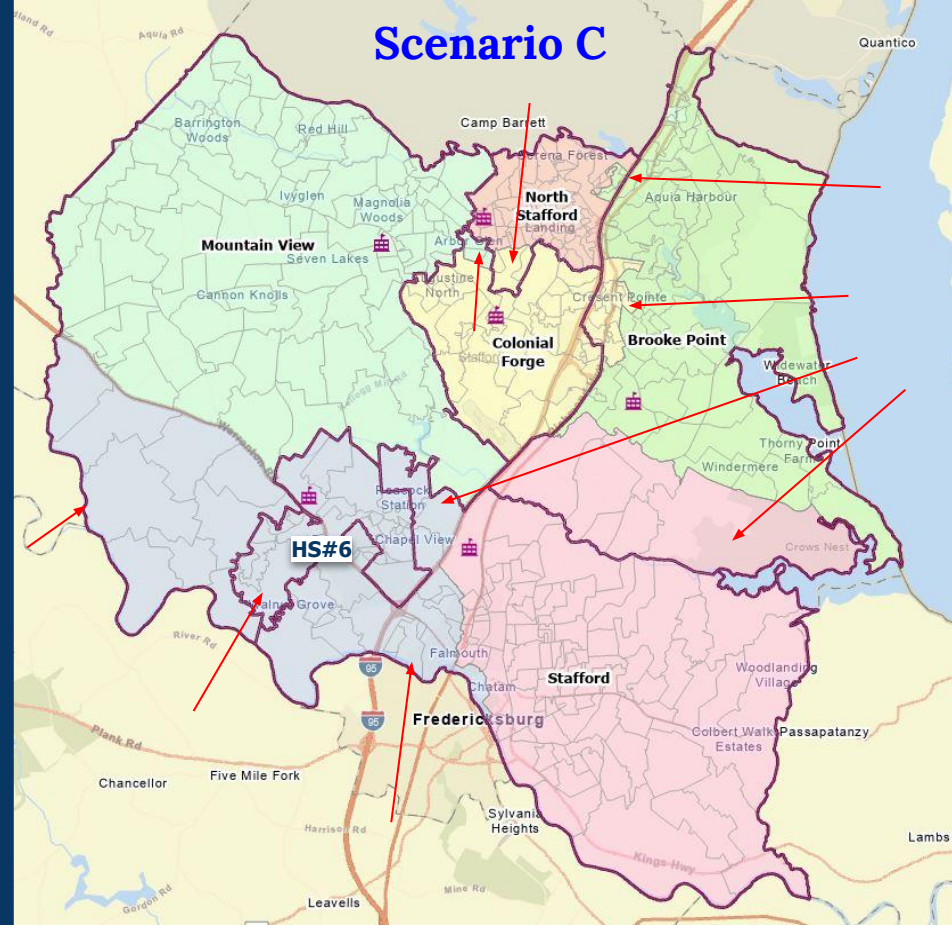
- 80% of planning units not reassigned (331)
- 20% of planning unit reassigned (85)
- 55 planning units reassigned to HS#6



Current Boundaries



Scenario C



Stafford County Public Schools

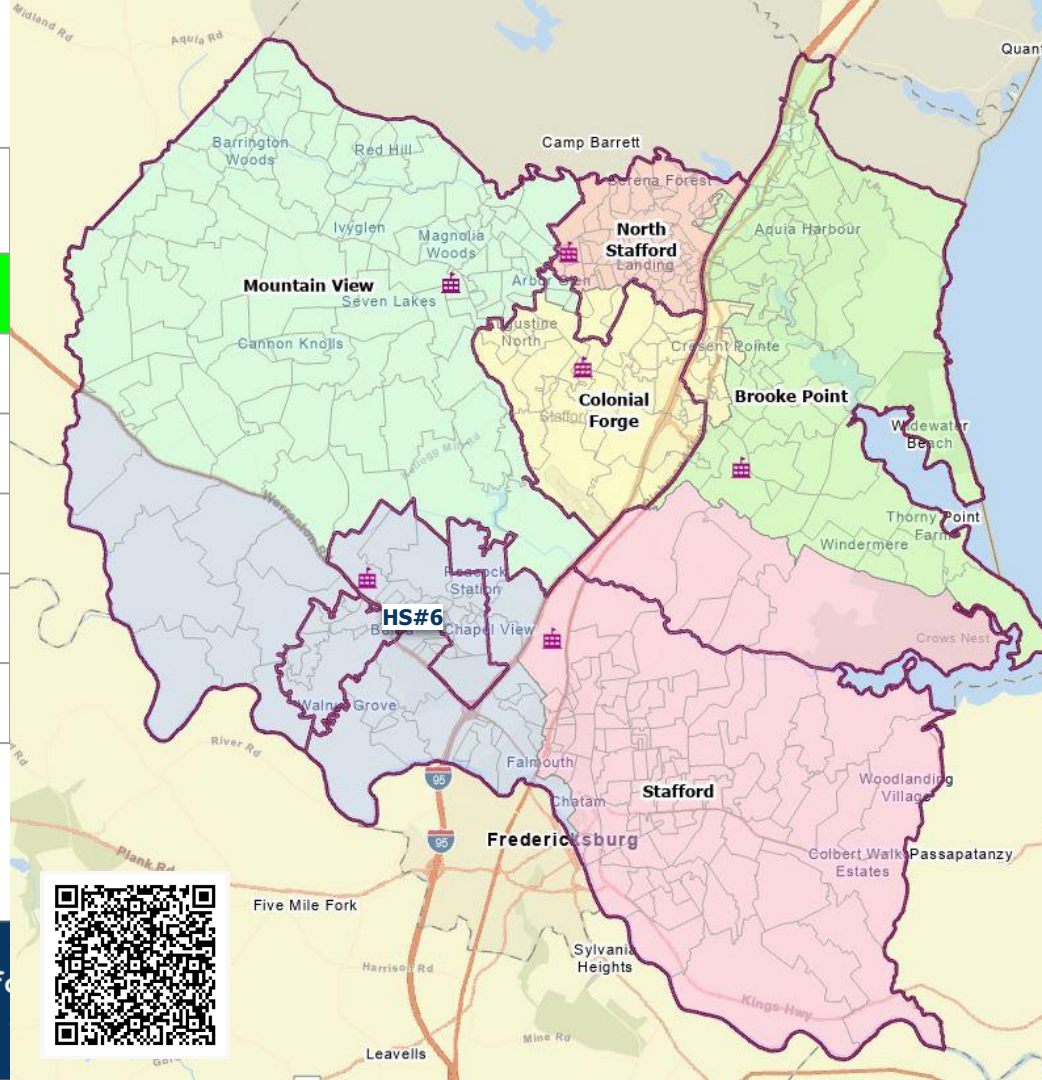
Inspire | Empower | Excel

Scenario C

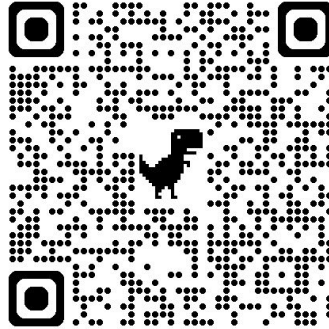
FRL = Free & Reduced Lunch
b/c = Boundary Change

High School (Scenario E2)	Capacity Before b/c 2026	Capacity After b/c 2026	Capacity After b/c 2029	Capacity After b/c 2032	FRL% Before	FRL% After
North Stafford	105%	88%	92%	107%	57%	59%
Brooke Point	108%	85%	93%	104%	51%	49%
Colonial Forge	98%	88%	91%	98%	37%	38%
Mountain View	99%	89%	91%	93%	37%	38%
Stafford	108%	91%	93%	99%	49%	46%
HS#6	N/A	77%	87%	98%	N/A	47%

- 79% of planning units not reassigned (328)
- 21% of planning unit reassigned (88)
- 58 planning units reassigned to HS#6



Feedback Form



Next Steps - Community Engagement Overview

Date / Time	Activity	Location	Time
September 3, 2024	Community Meeting #1	Colonial Forge HS	6pm
October 1, 2024	Community Meeting #2	Stafford HS	7pm
October 30, 2024	Community Meeting #3	Mountain View HS	6pm
November 12, 2024	School Board Information & Public Hearing	Bandy Complex	7pm
December 10, 2024	School Board Action - Board approves HS#6 boundaries	Bandy Complex	7pm
August 2026	New High School Boundaries Take Effect		



Contact Us:

Lionel White

Director of Facilities, Planning & GIS

Tel: 540-658-6743

Email: planning@staffordschools.net

To check redistricting scenarios with your street address please use the [Find Your School Website](#)



For general information visit our website:

<https://www.staffordschools.net/redistricting>



Stafford County Public Schools

Inspire | Empower | Excel

High School #6 Redistricting



Community Meeting#1
September 3 , 2024



Stafford County Public Schools

Inspire | Empower | Excel

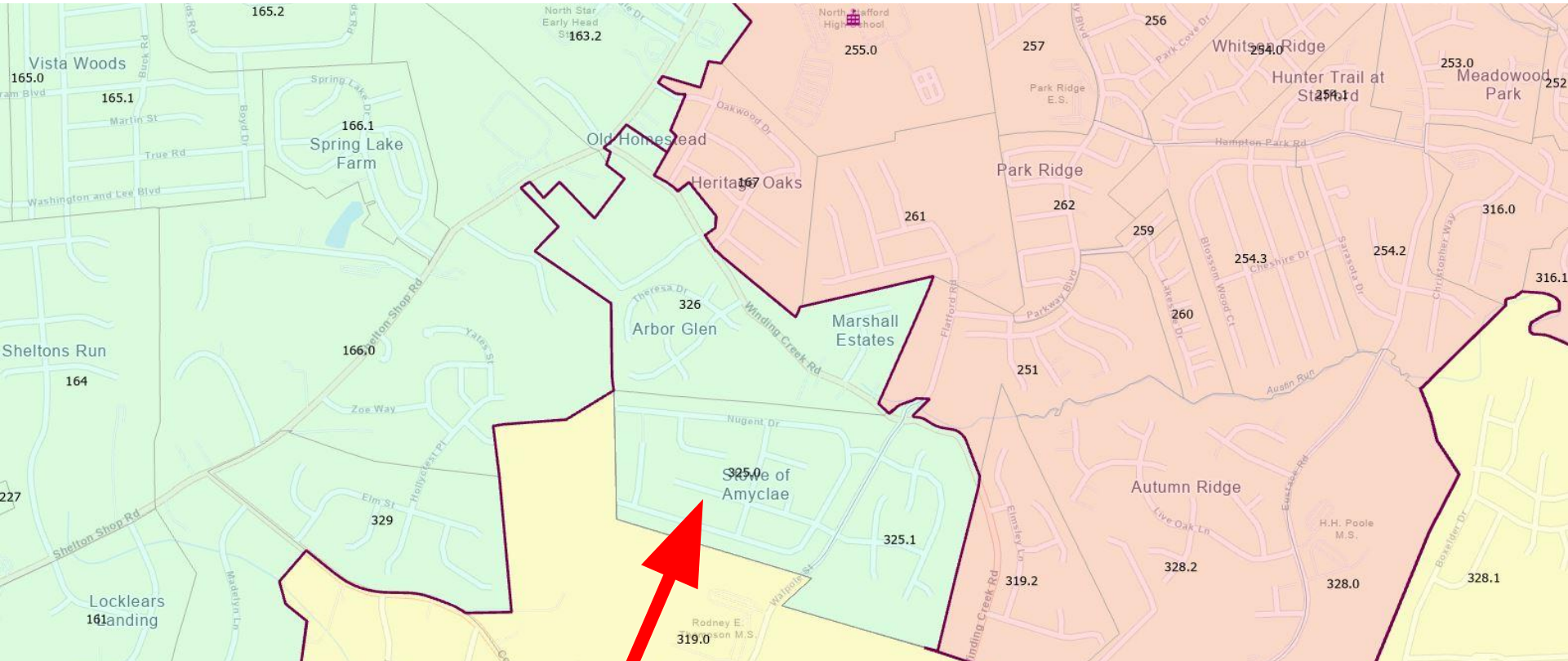
Detailed Maps



Stafford County Public Schools

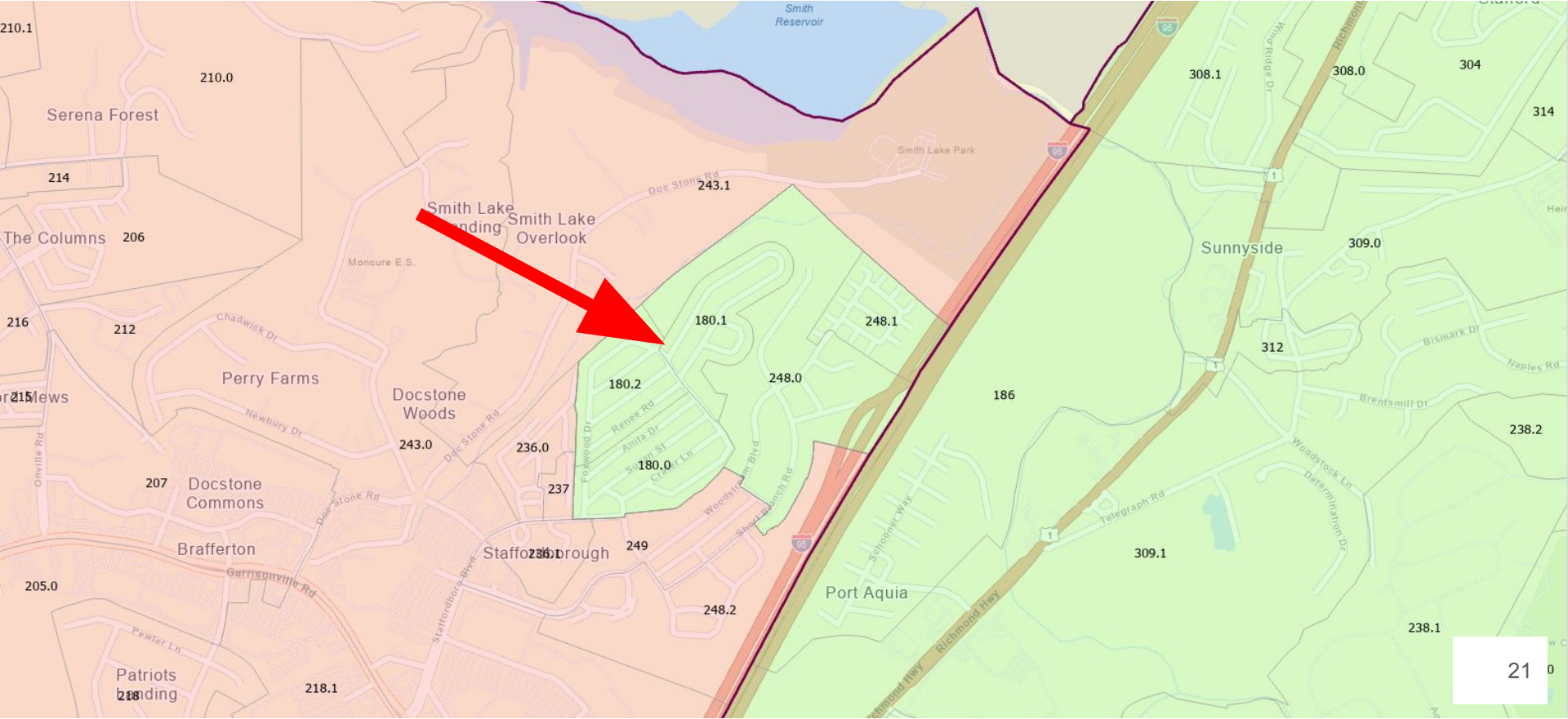
Inspire | Empower | Excel

Scenario A - From Colonial Forge HS to Mountain View HS

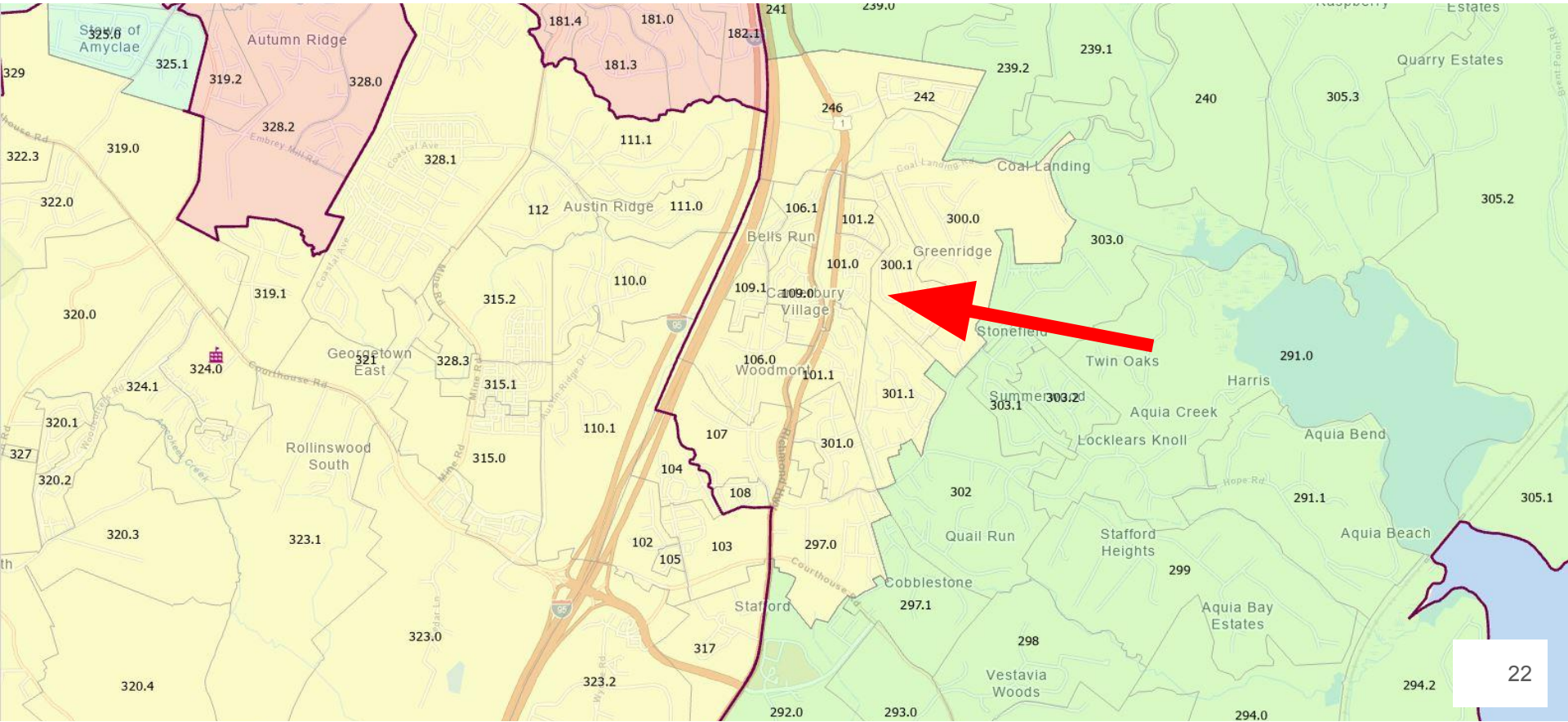


Note: The unique Planning Unit ID for each planning unit is shown. Planning units are the “building blocks” of an attendance boundary.

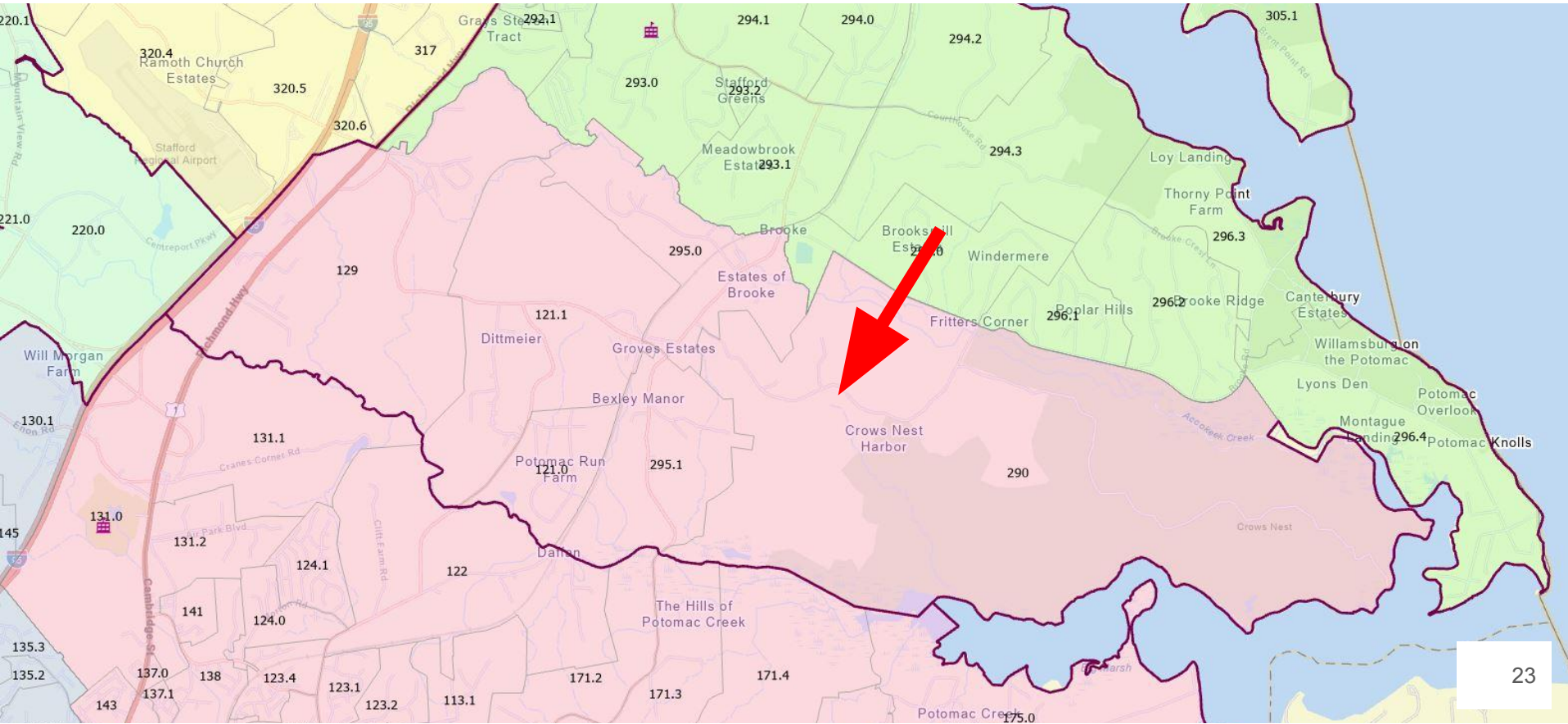
Scenario A - From North Stafford HS to Brooke Point HS



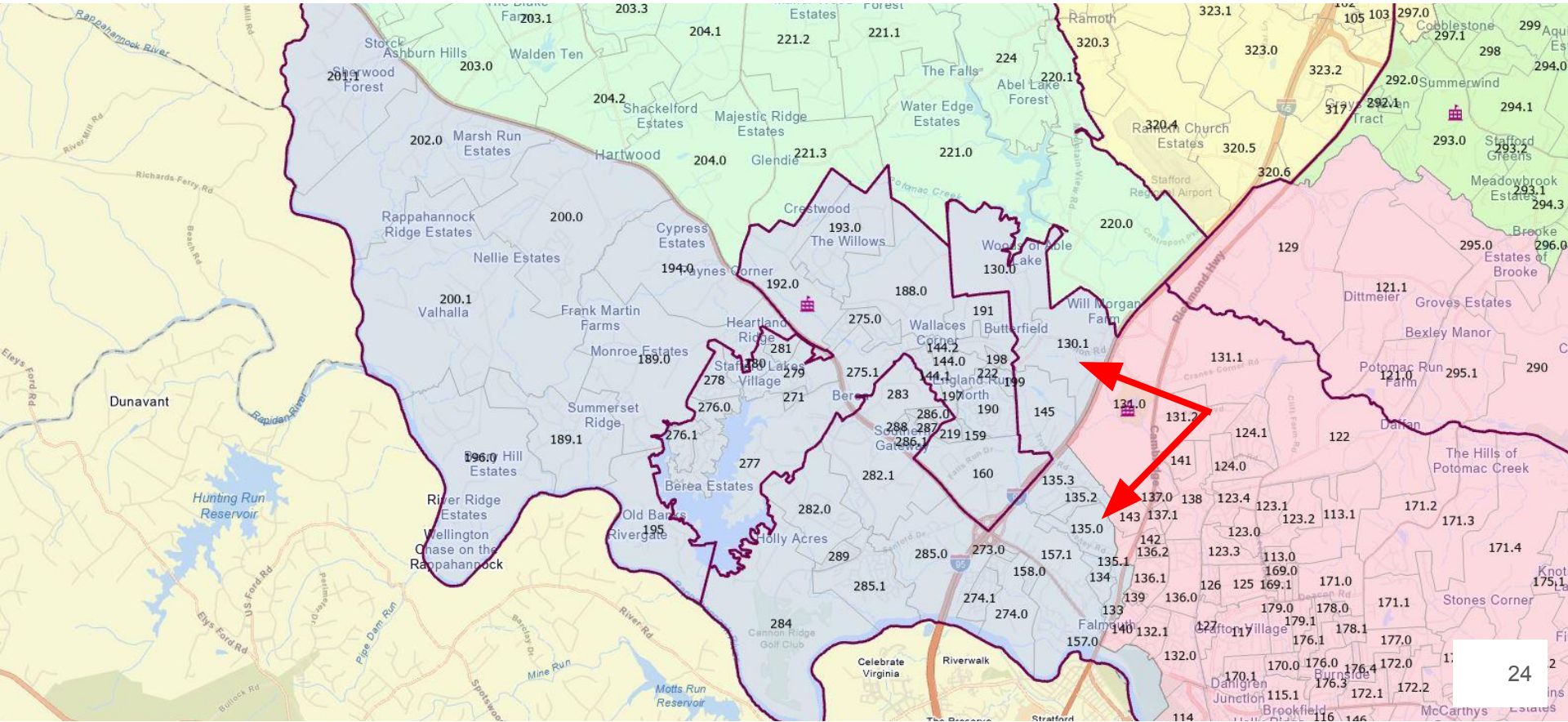
Scenario A - From Brooke Point HS to Colonial Forge HS



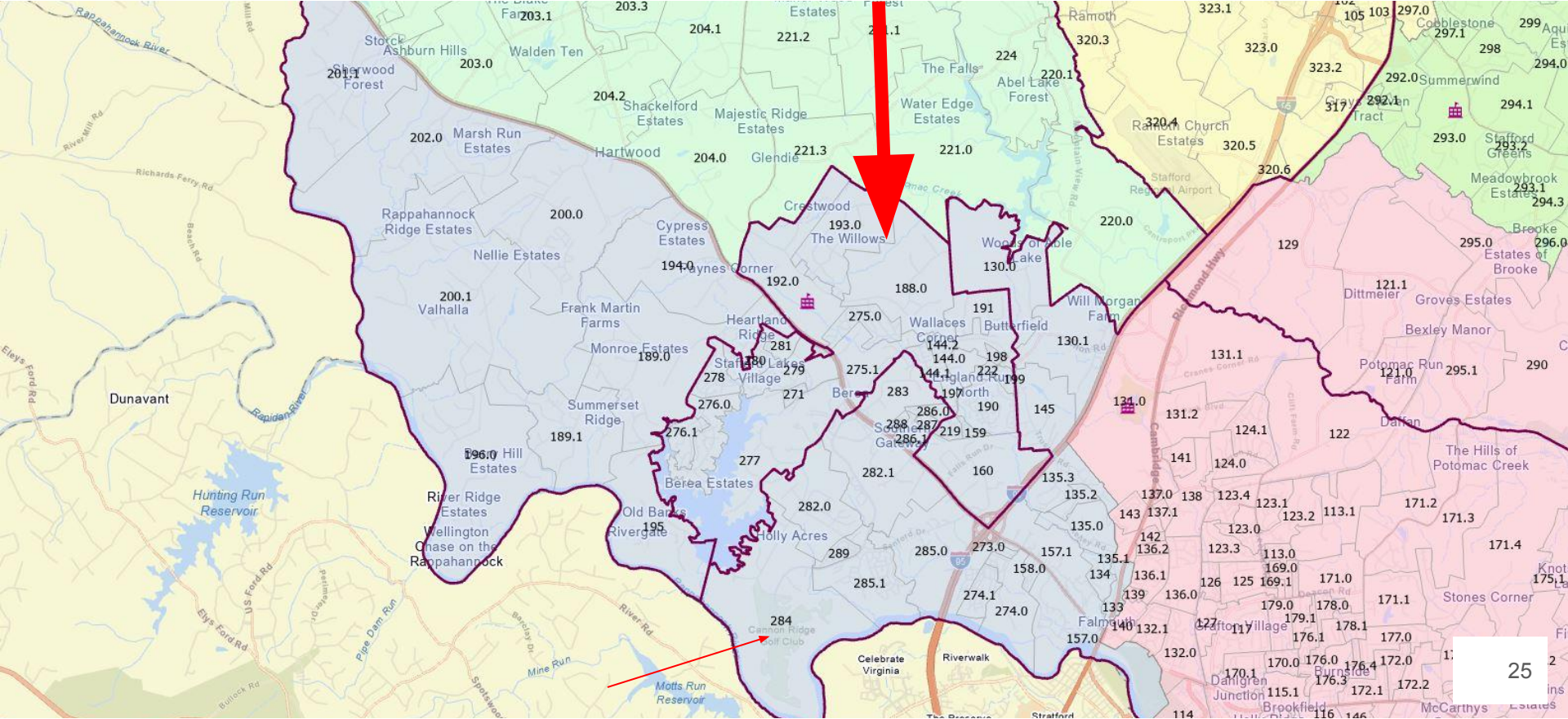
Scenario A - From Brooke Point HS to Stafford HS



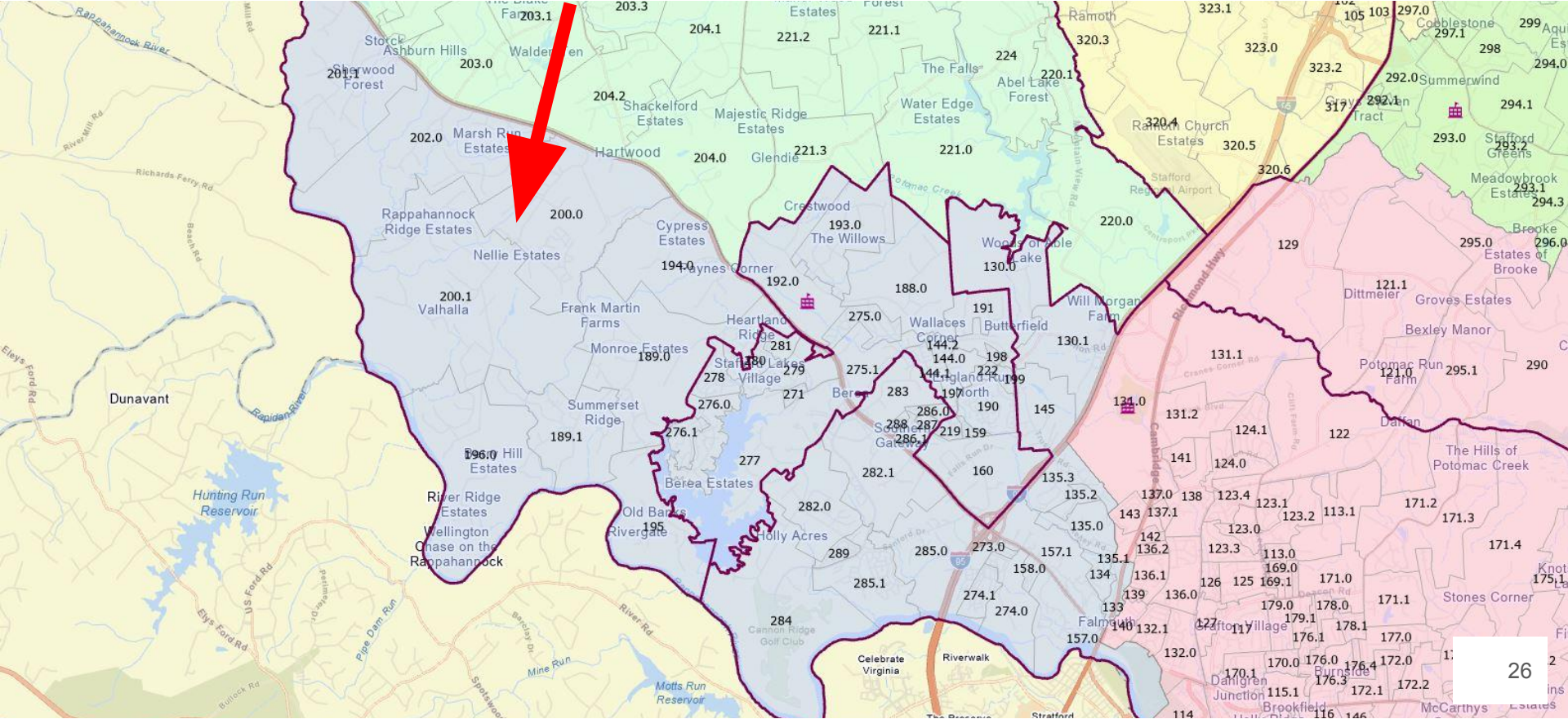
Scenario A - From Stafford HS to HS#6



Scenario A - From Colonial Forge HS to HS#6

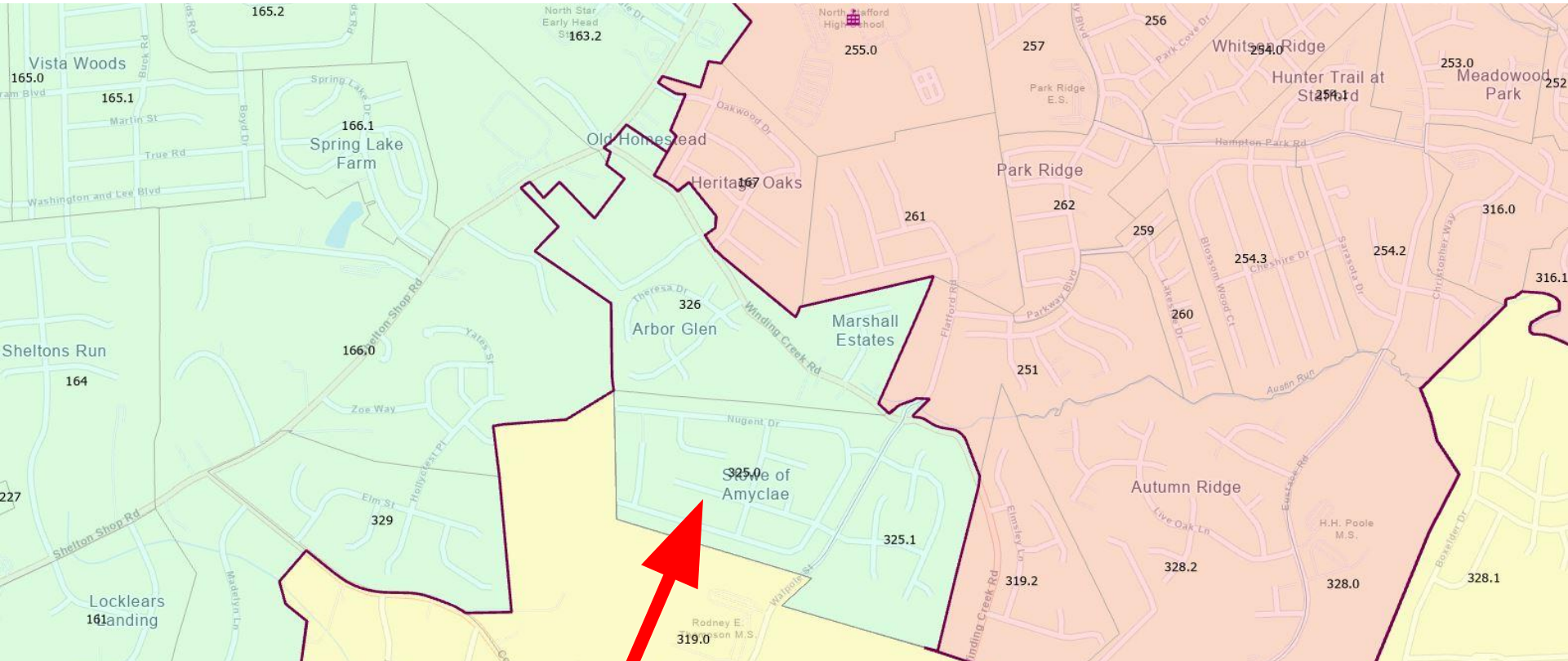


Scenario A - From Mountain View HS to HS#6



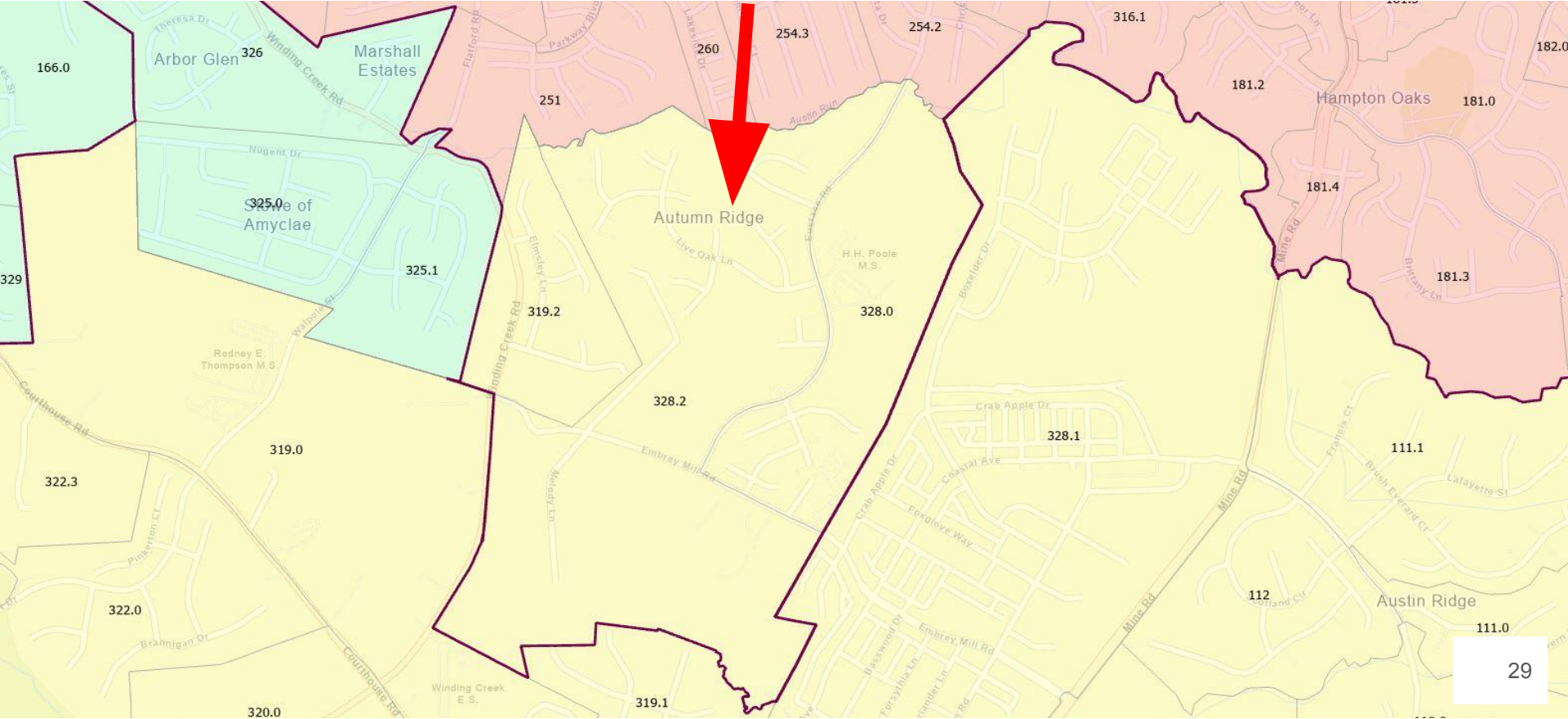
Scenario B

Scenario B - From Colonial Forge HS to Mountain View HS

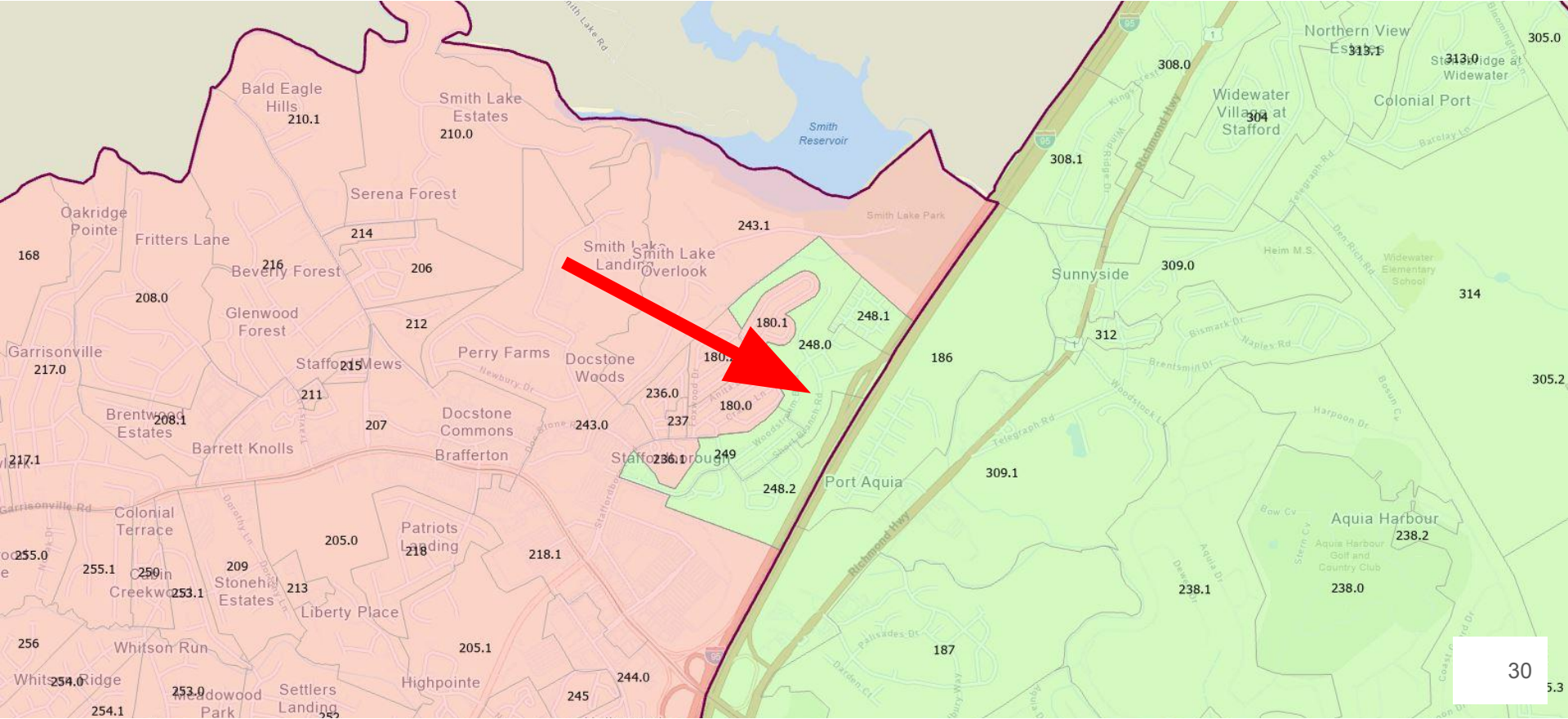


Note: The unique Planning Unit ID for each planning unit is shown. Planning units are the “building blocks” of an attendance boundary.

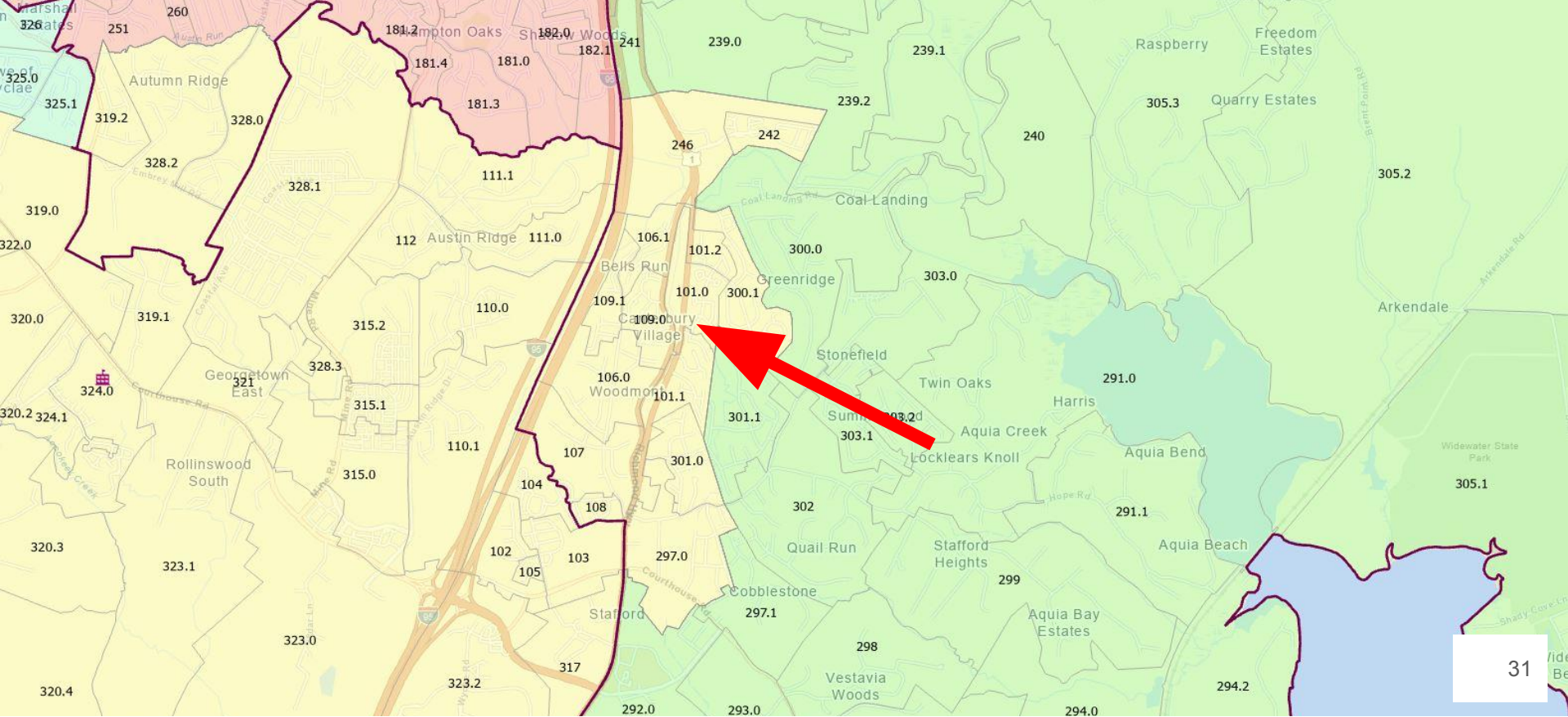
Scenario B - From North Stafford HS to Colonial Forge HS



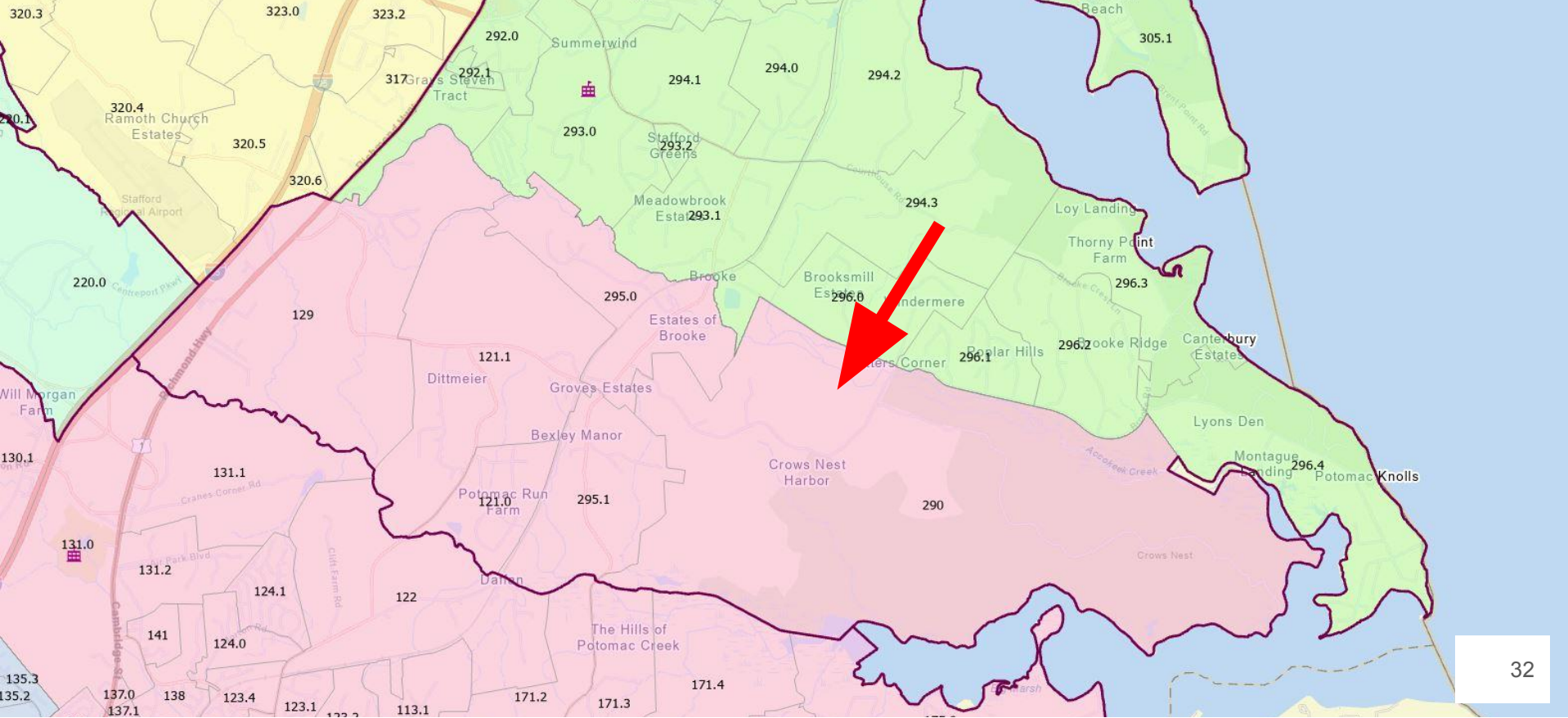
Scenario B - From North Stafford HS to Brooke Point HS



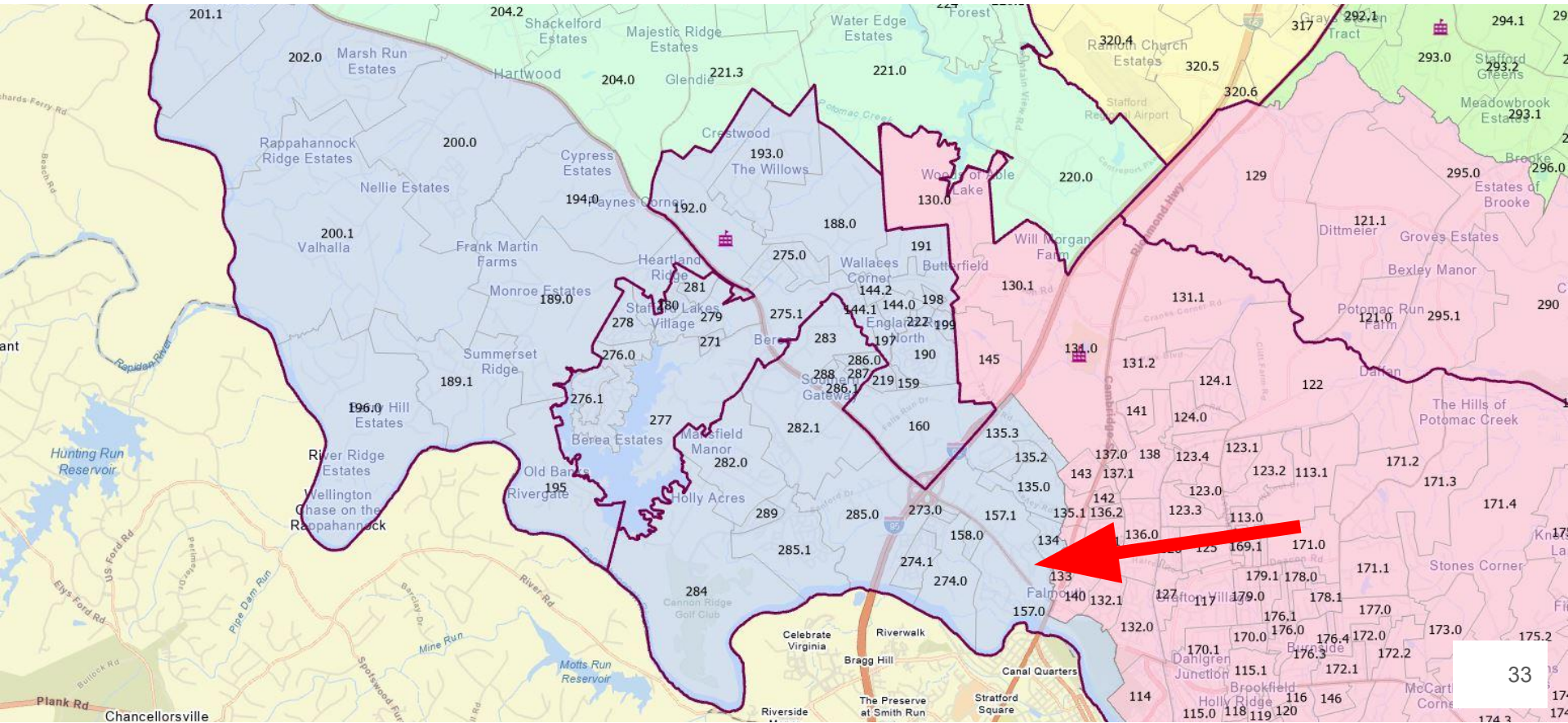
Scenario B - From Brooke Point HS to Colonial Forge HS



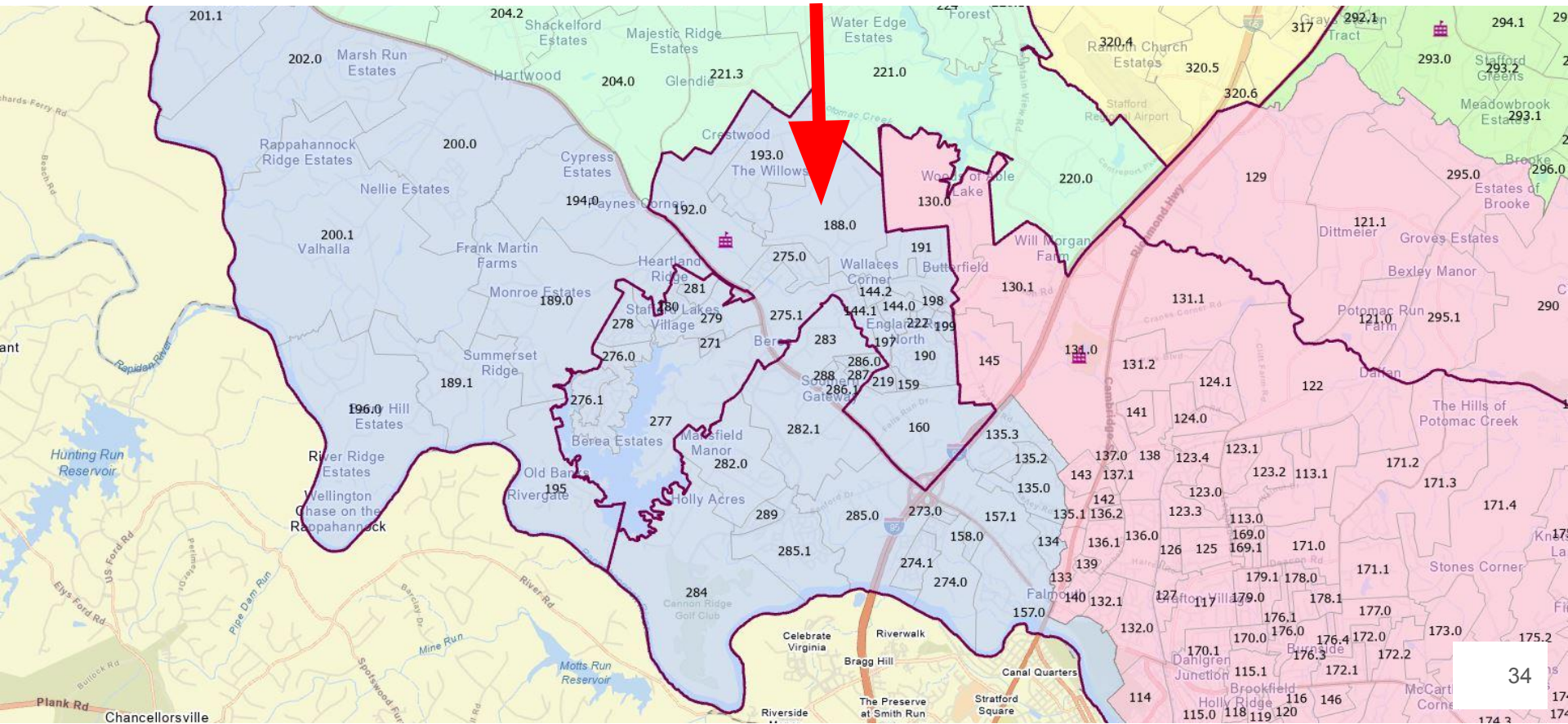
Scenario B - From Brooke Point HS to Stafford HS



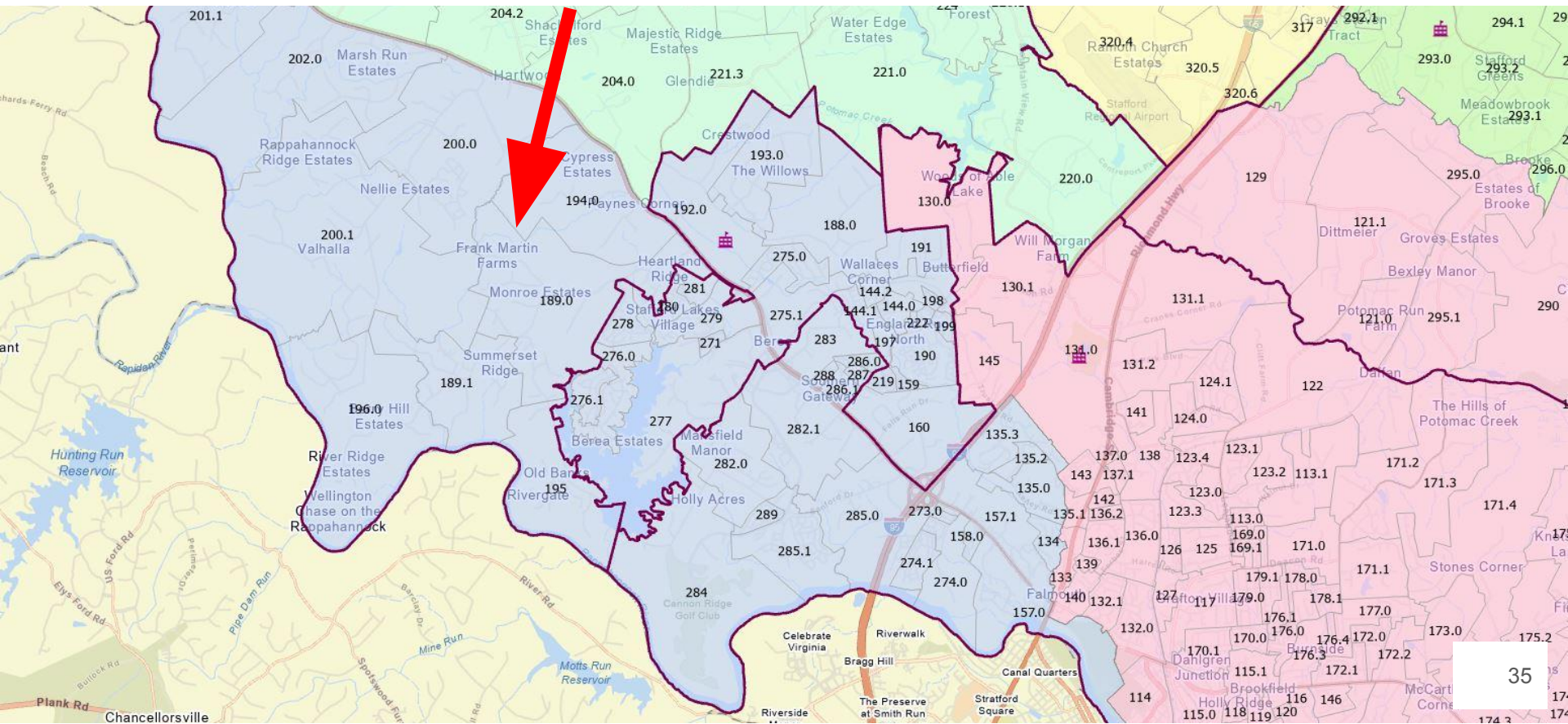
Scenario B - From Stafford HS to HS#6



Scenario B - From Colonial Forge HS to HS#6

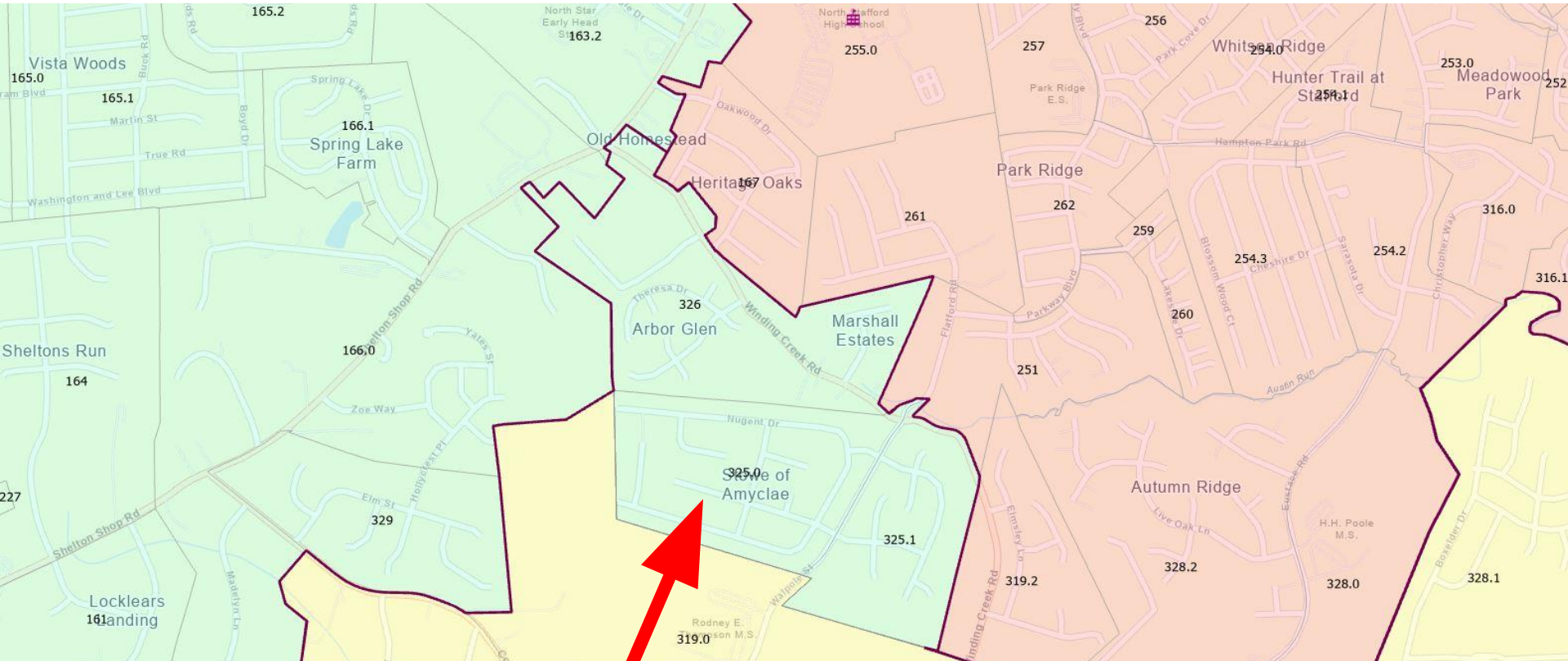


Scenario B - From Mountain View HS to HS#6



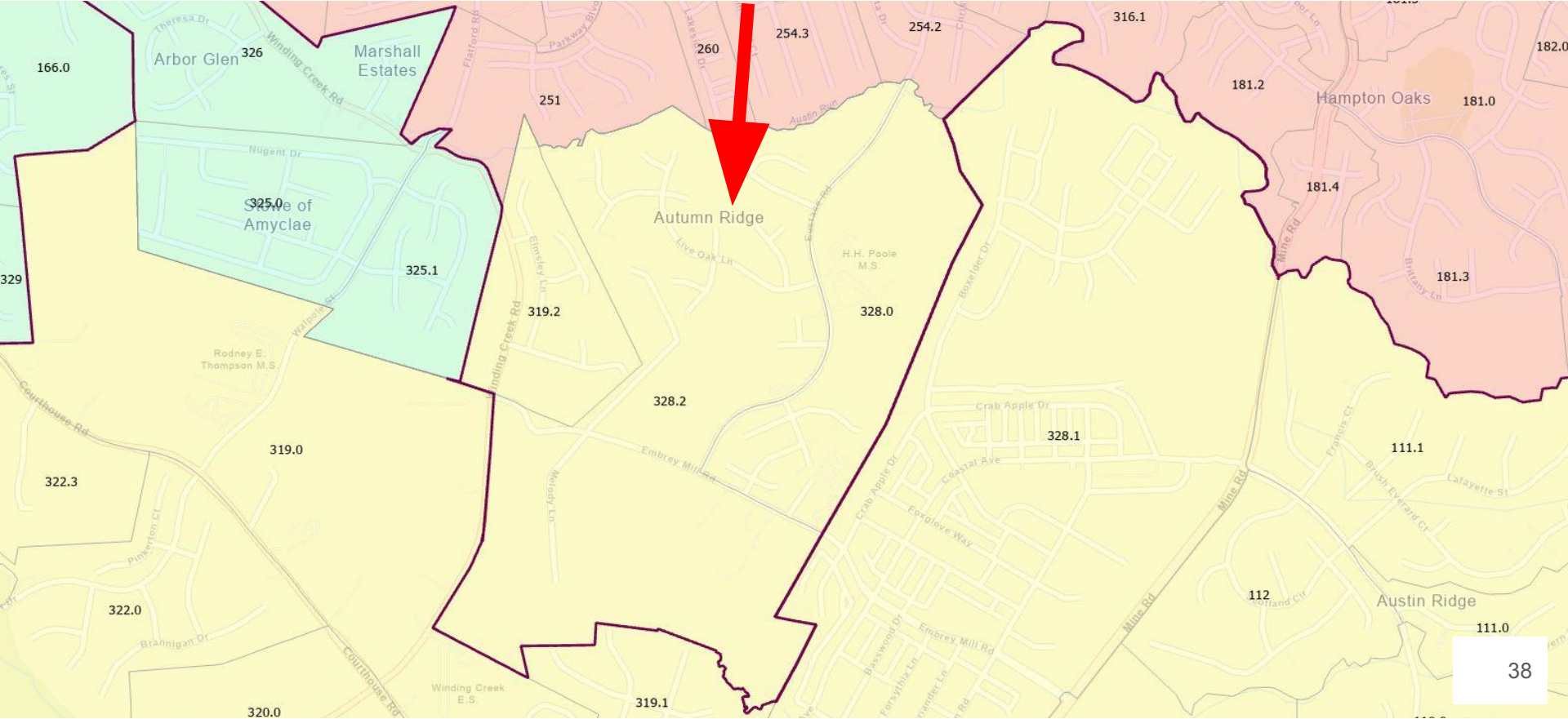
Scenario C

Scenario C - From Colonial Forge HS to Mountain View HS

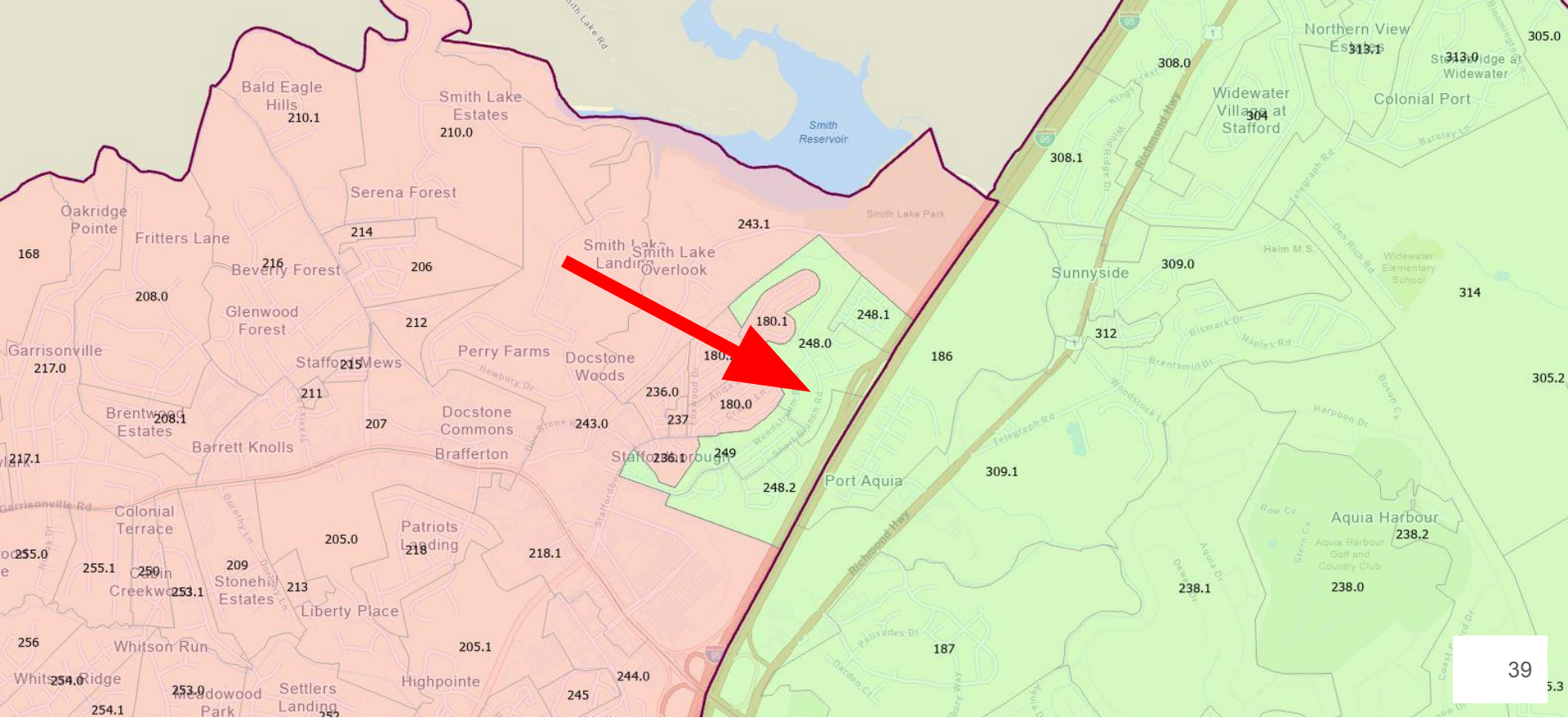


Note: The unique Planning Unit ID for each planning unit is shown. Planning units are the “building blocks” of an attendance boundary.

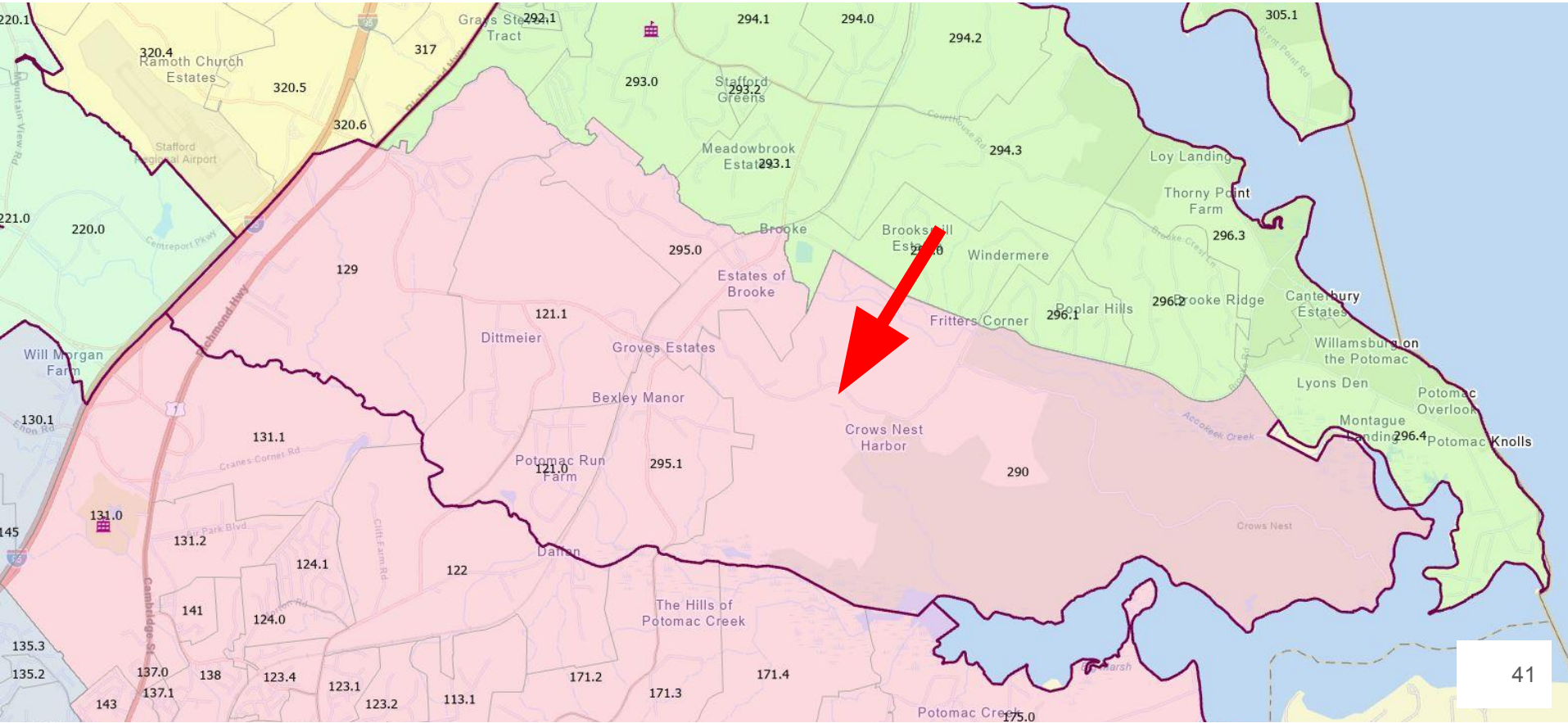
Scenario C - From North Stafford HS to Colonial Forge HS



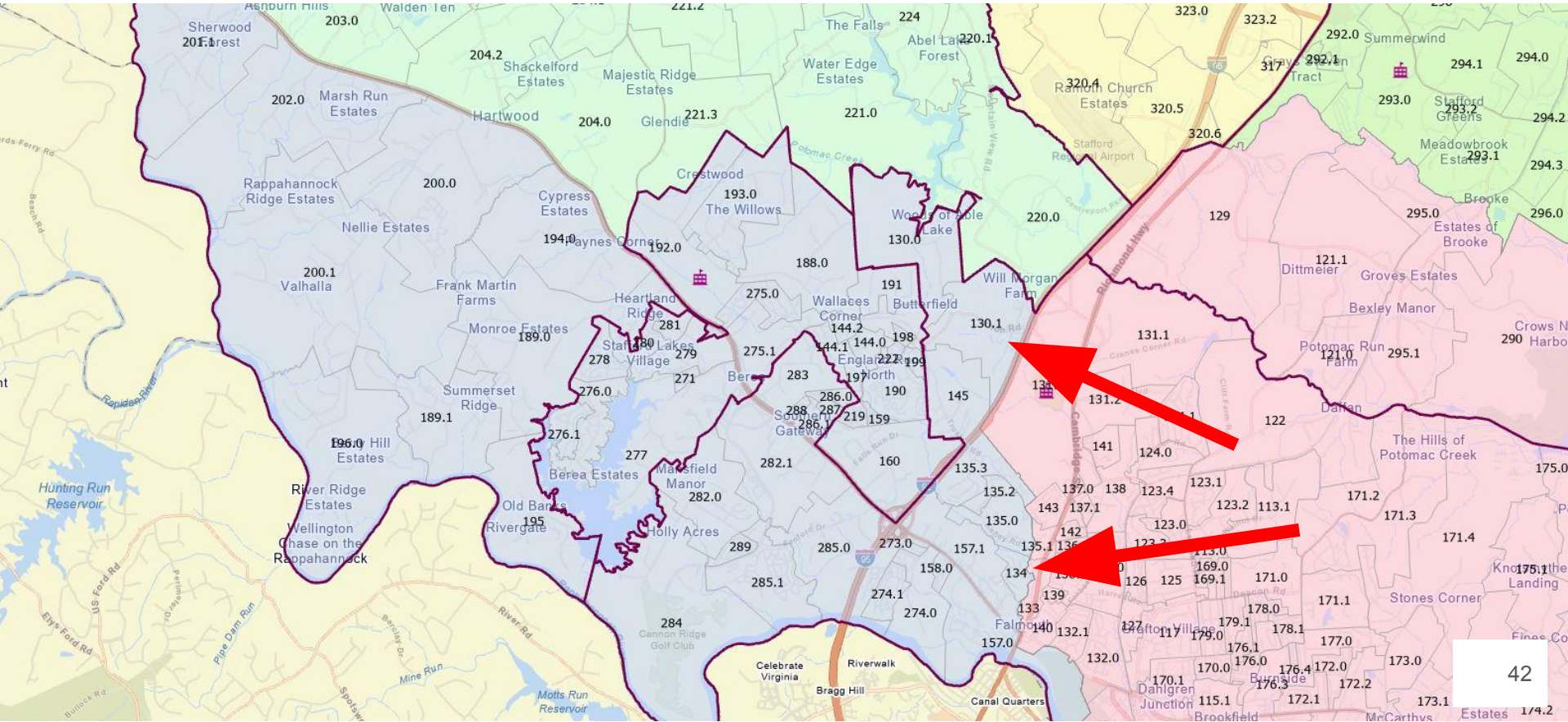
Scenario C - From North Stafford HS to Brooke Point HS



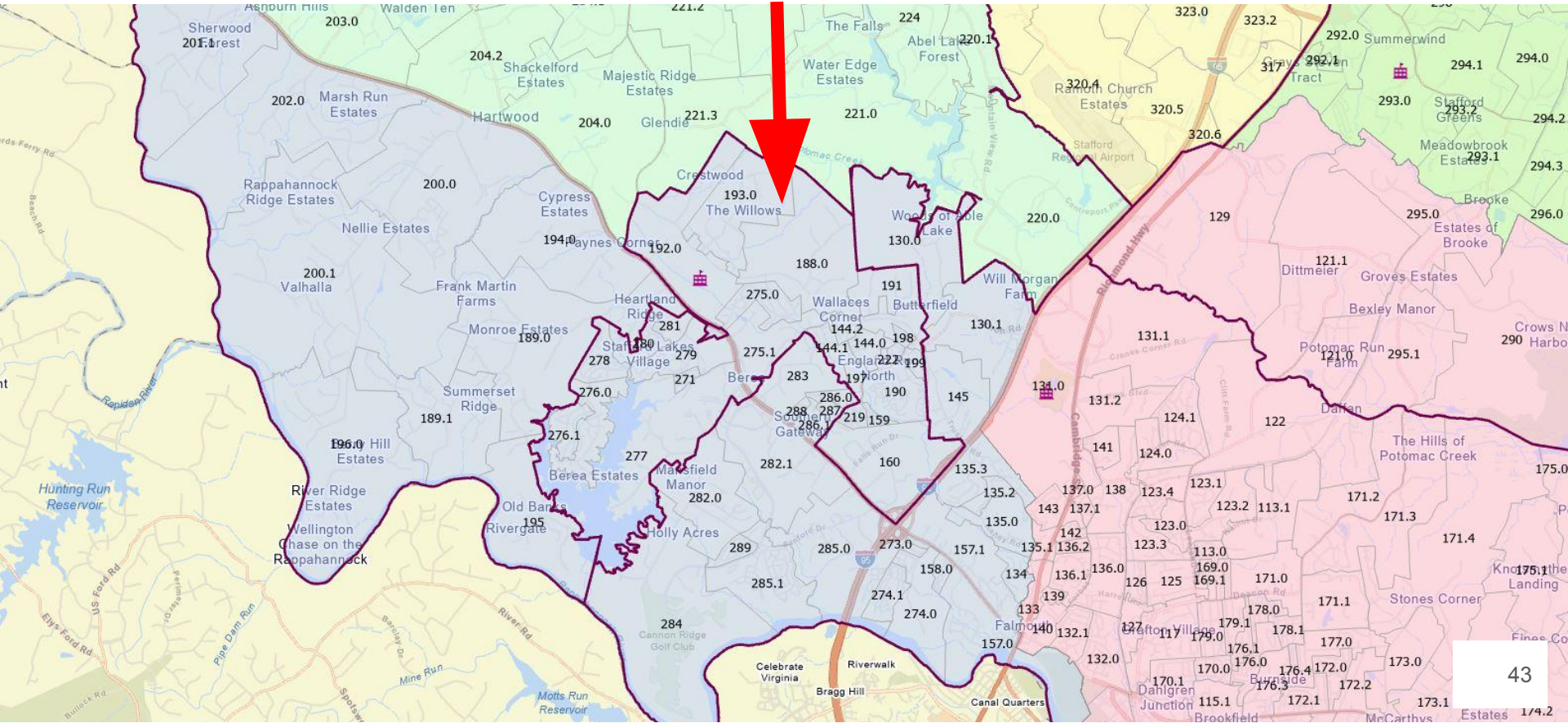
Scenario C - From Brooke Point HS to Stafford HS



Scenario C - From Stafford HS to HS#6



Scenario B - From Colonial Forge HS to HS#6



Scenario C - From Mountain View HS to HS#6

