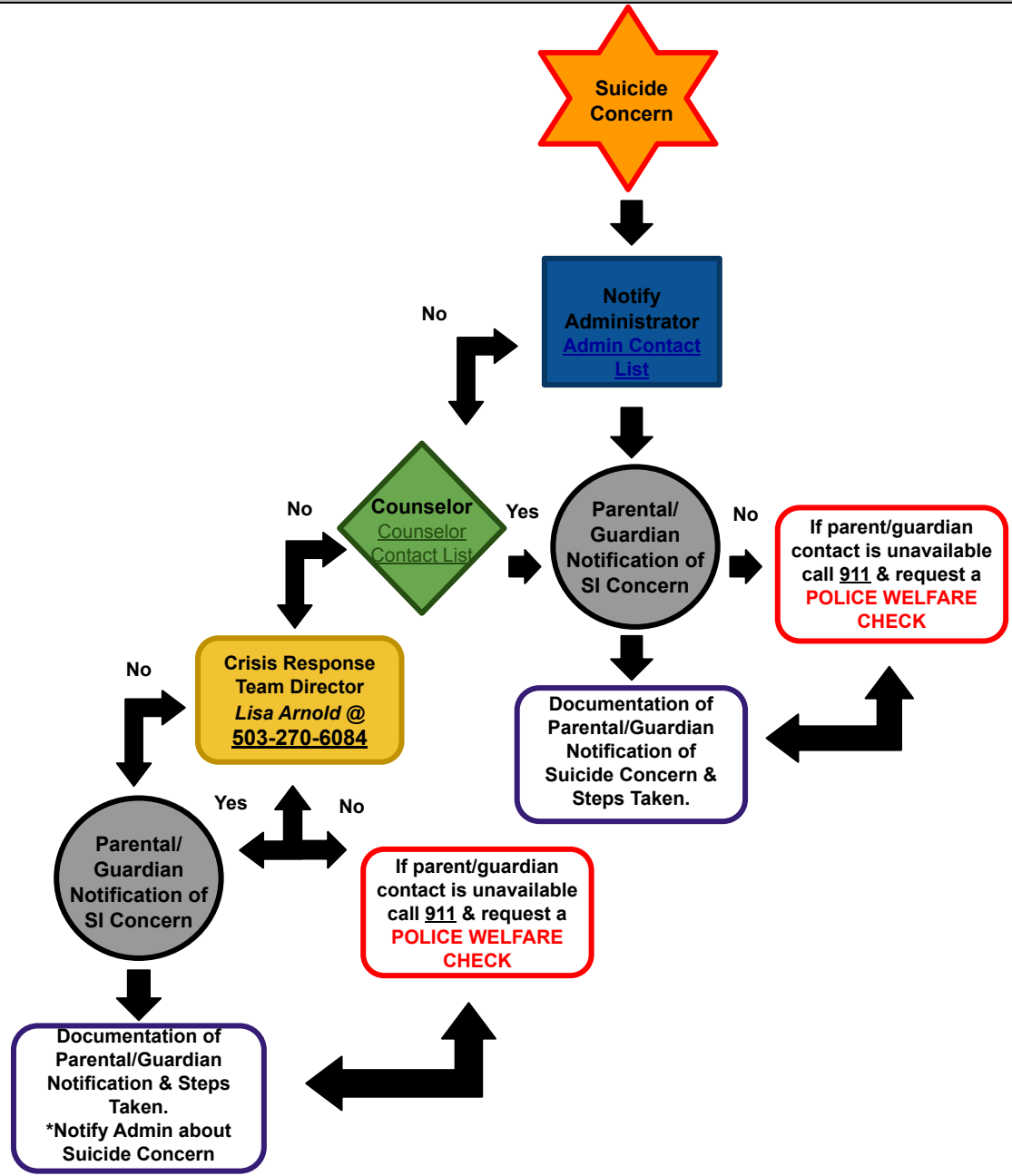


# OFF CAMPUS/AFTER SCHOOL HOURS/WEEKEND SUICIDE INTERVENTION PROTOCOL FLOWCHART

[Suicide Intervention Protocol Narrative](#)



★ Ensure you have read over the suicide intervention protocol flowchart narrative.

**Suicide Protocol Flowchart Narrative**

★ When following the flow sequence, **do not wait** for a callback.

★ If your contact doesn't answer the phone, leave a message and immediately proceed with next contact.

★ **A parent/guardian must always be notified of the suicide concern** & if they are unable to be reached, a **Police Welfare Check** must be requested.