



Crabtree, Rohrbaugh & Associates

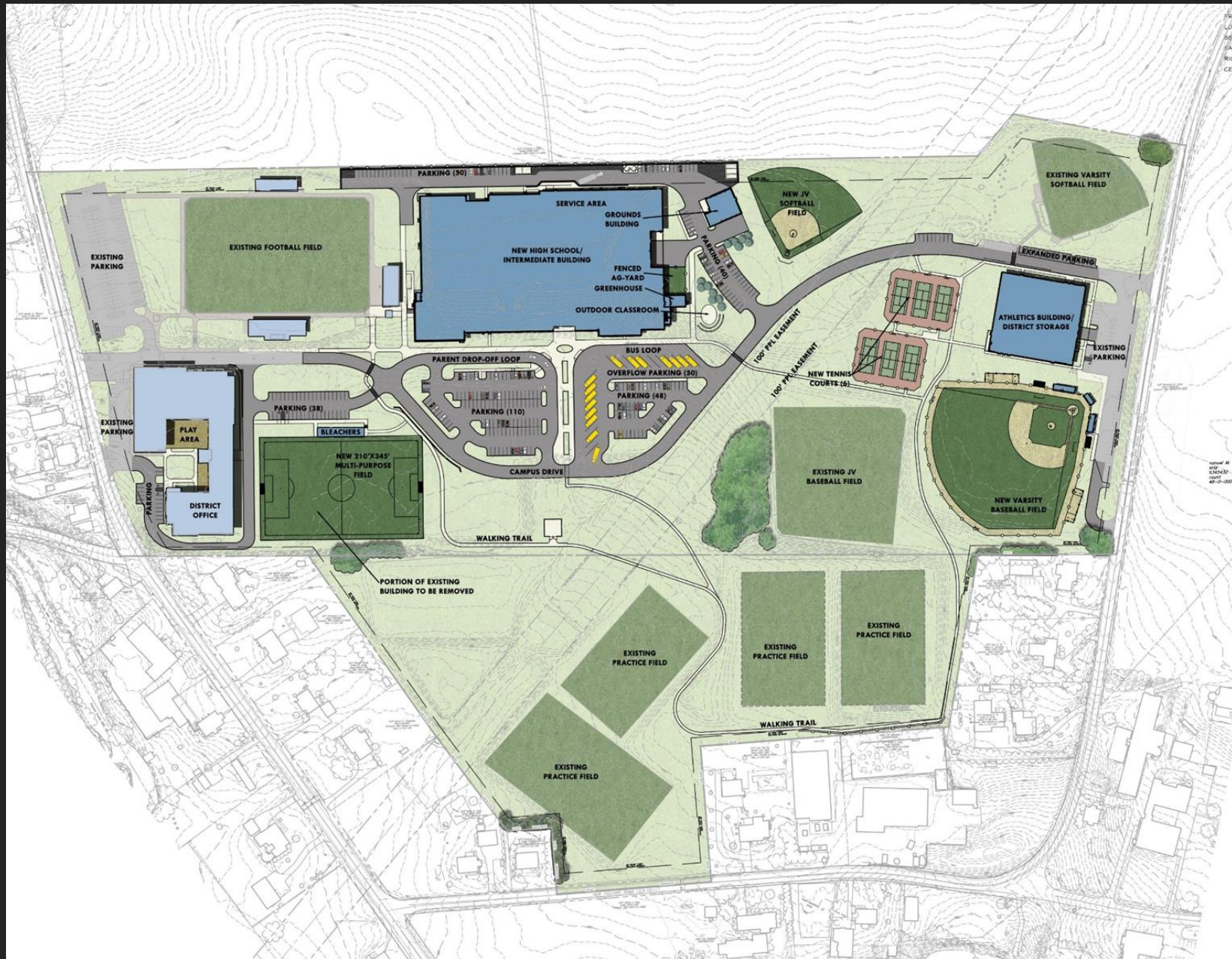
**PEQUEA VALLEY
SCHOOL DISTRICT
BOARD MEETING**

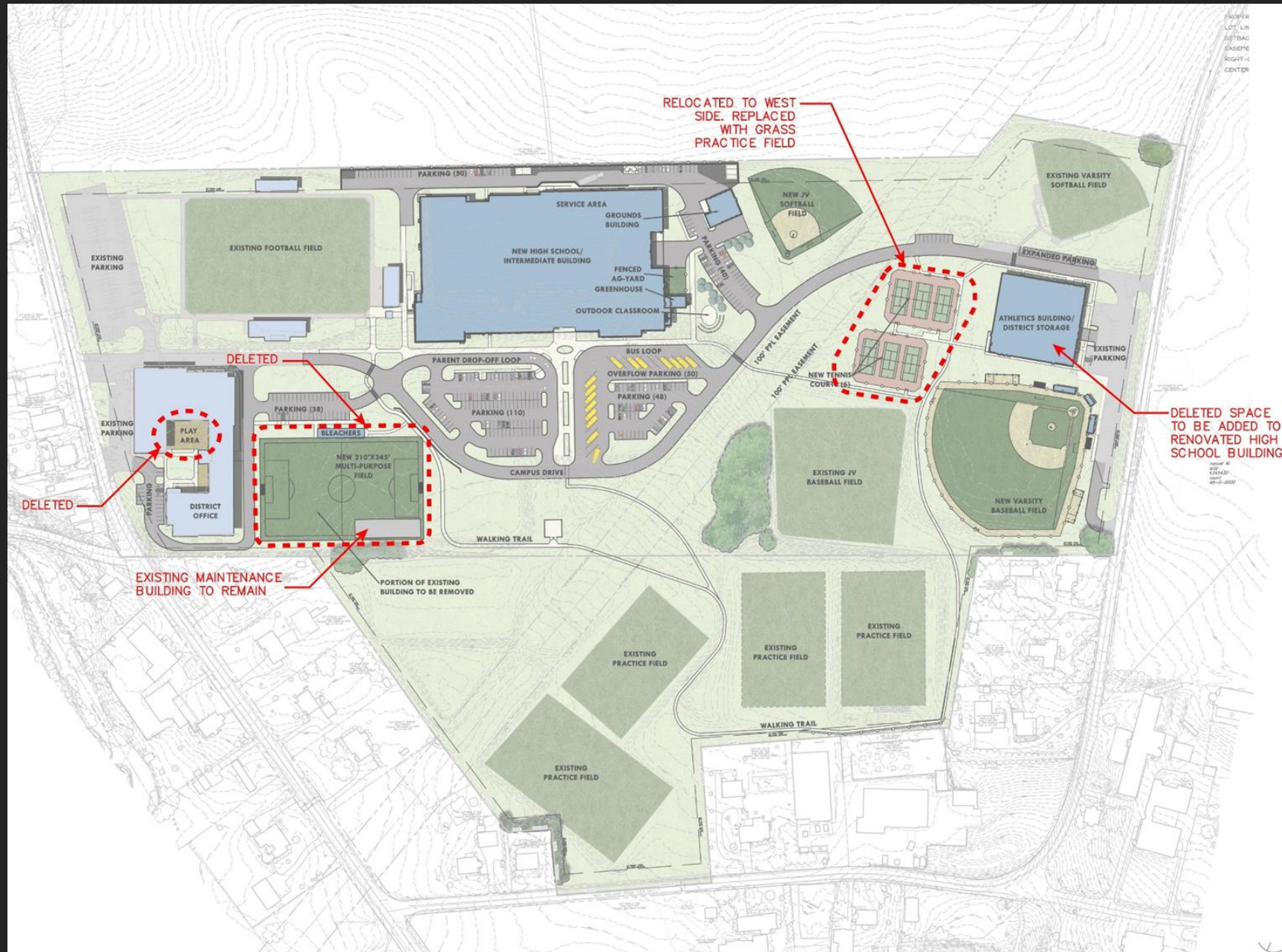
September 3, 2024

- **COORDINATION UPDATE**
- **SITE PLAN UPDATE**
- **FLOOR PLAN UPDATE**
- **SCHEDULE**

AGENDA

- **ONGOING COORDINATION MEETINGS WITH DISTRICT AND DESIGN TEAM**
- **D&E COORDINATION WITH TOWNSHIP AND NPDES REGARDING RESUBMISSION REQUIREMENTS**
 - **ENGINEER REVIEW: MODIFICATION TO EXISTING APPLICATION**
 - **NPDES REVISION HAS THE LONGEST REVIEW IN THE PLANNING PHASES OF THE PROJECT**
- **EVALUATING RECENTLY RECEIVED BIDS TO DETERMINE HOW CURRENT MARKET CONDITIONS ARE AFFECTING SIMILAR PROJECT TYPES**









FLOOR PLANS

HEALTHCARE SERVICE

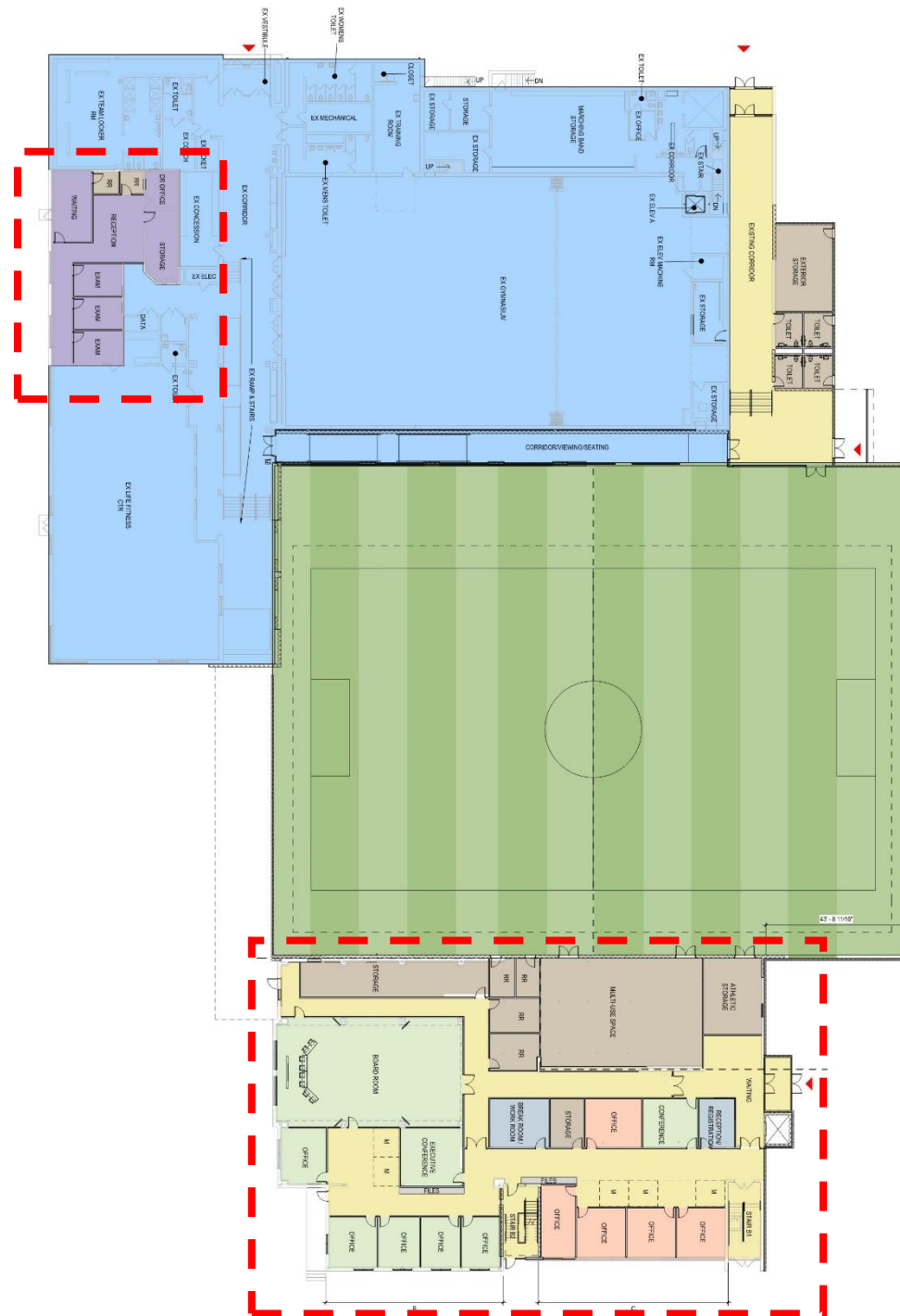
EXISTING FITNESS CENTER

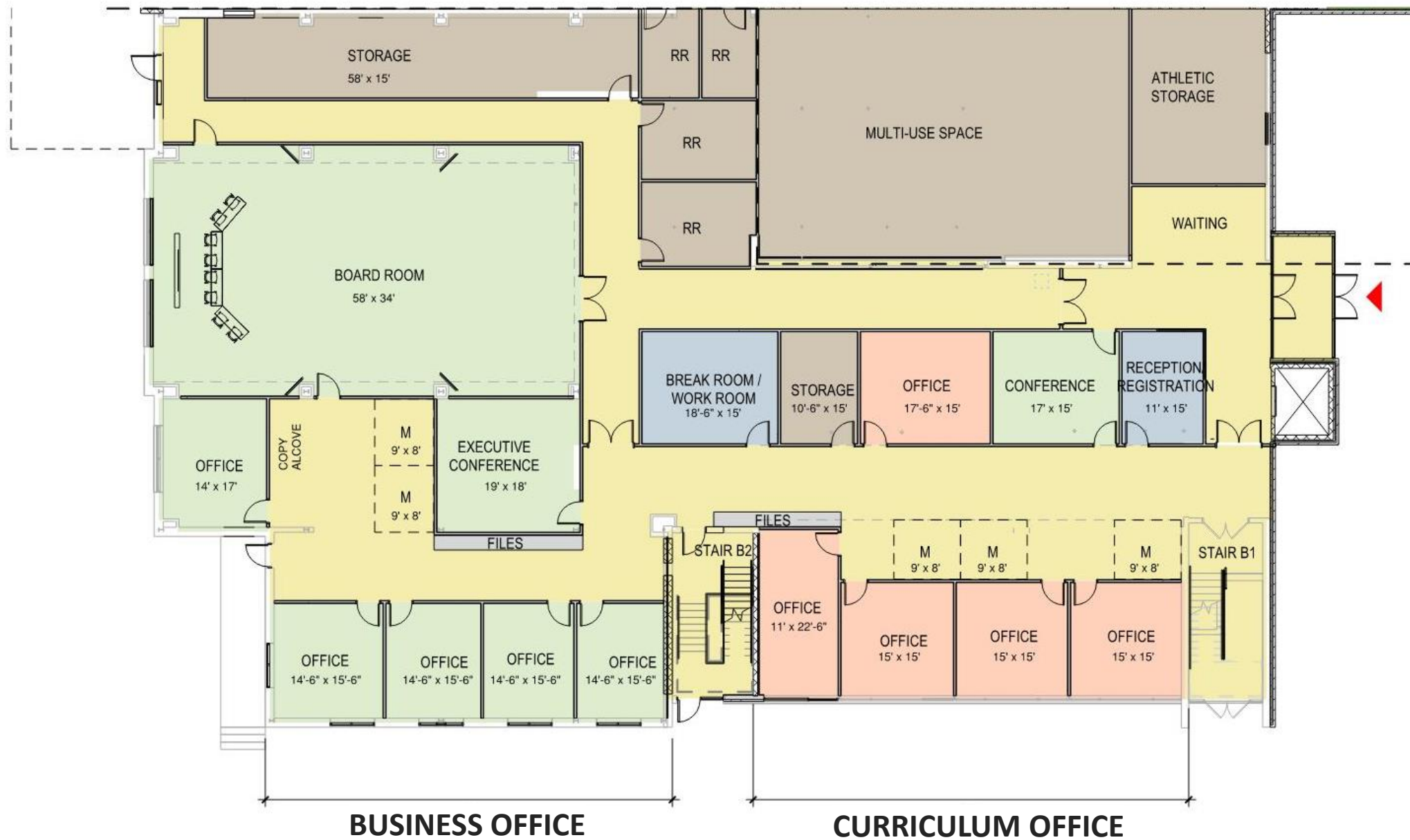
OUTDOOR STORAGE
OUTDOOR RESTROOMS
INDOOR RESTROOMS
EXISTING GYMNASIUM

INDOOR TURF PRACTICE FIELD

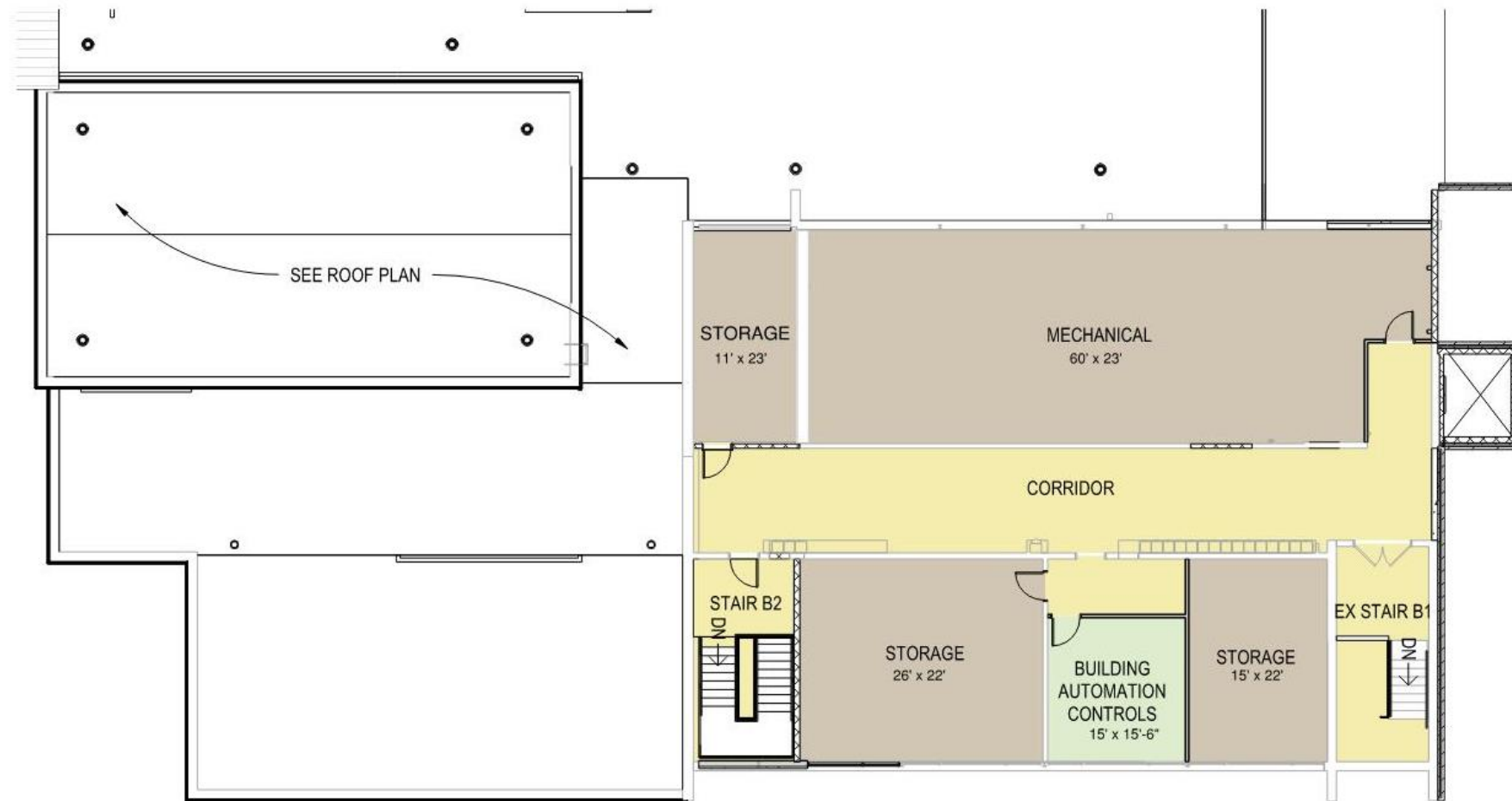
DISTRICT OFFICE
BOARD / TRAINING ROOM

FIRST FLOOR

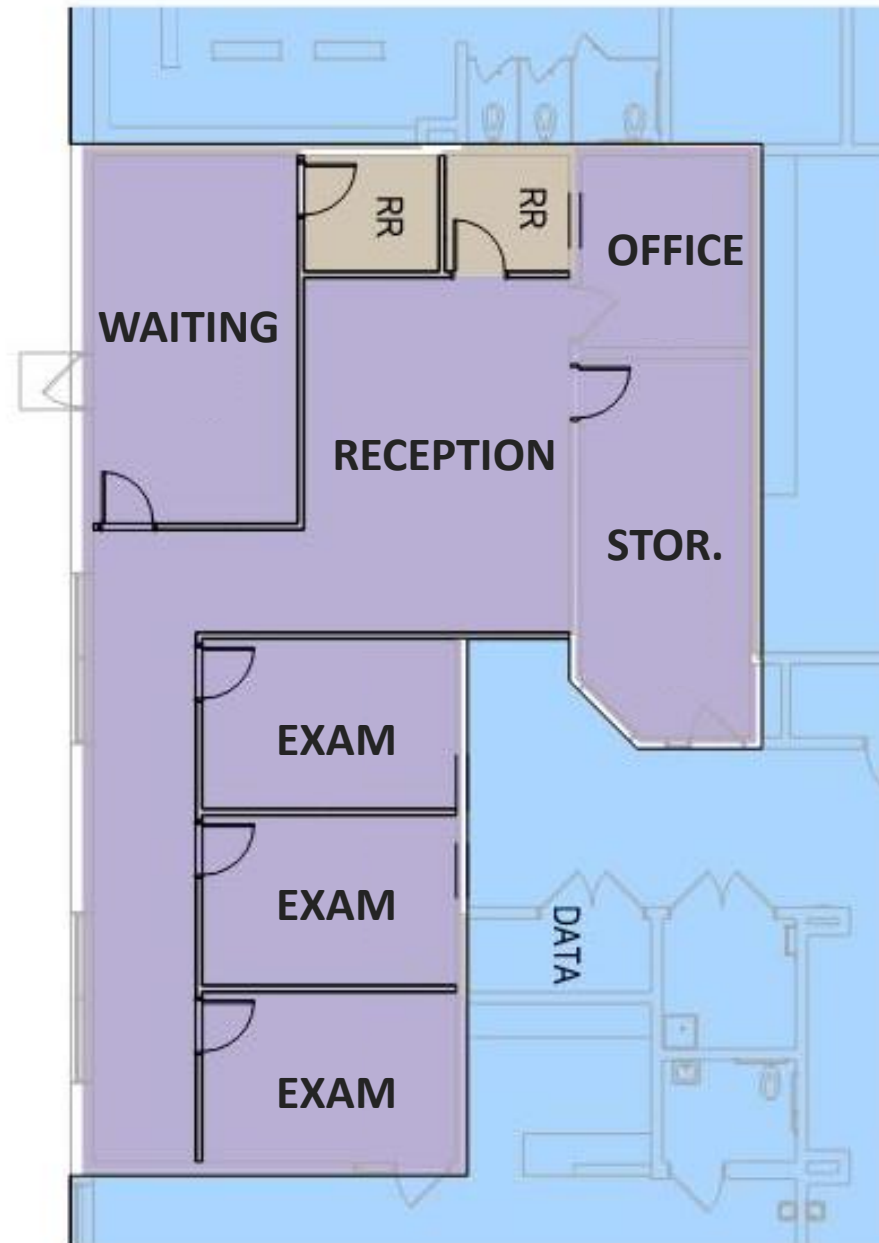




FIRST FLOOR – DISTRICT OFFICE

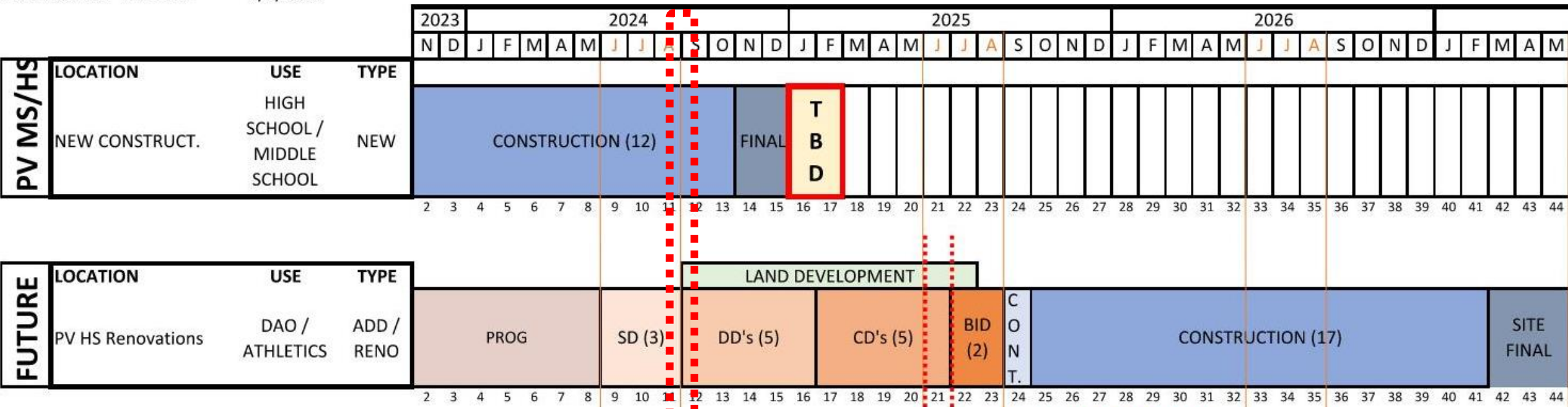


SECOND FLOOR – DISTRICT OFFICE



PEQUEA VALLEY CONSTRUCTION PROJECTS

PRELIMINARY TIMELINE 9/3/2024



LAND APPROVALS

Design Development plans	Sept – Oct. 2024	
Present revised Plan to Township Supervisors	October 20	
NPDES Renewal NOI Application for current permit	November	
Submit Plans for Township Engineering Review	December 20	
*Conservation District NPDES Submission	January 2025	
Township Engineering Approval	April 2025	
Conservation District Approval	July 2025	* Major modification of NPDES permit needed to address revisions

- **PROVIDE UPDATED PROPOSALS FOR PROFESSIONAL SERVICES**
- **PROCEED WITH LAND DEVELOPMENT REVISIONS**
- **DEVELOP CONSTRUCTION DRAWINGS**
- **UPDATE PROBABLE COST OF CONSTRUCTION**



Pequea Valley School District

Where Each Learner Counts



Crabtree, Rohrbaugh & Associates

www.cra-architects.com