

**TOWN OF ELLINGTON**  
**CONSTRUCTION/REPAIR ELLINGTON VOLUNTEER FIRE DEPARTMENT FLOORING**

Project Scope: To refinish 6 fire station bay floors and adjacent hallways with an epoxy type flooring material

The work is to be done in two phases.

Phase 1 will cover 3 large apparatus bays, the bay apron hallway, an entry way, hallway and storage closet. The 3 bays measure 54' x 42', the apron is 54' x 4' and the hallway, entry way and storage closet fit are in an 18' x 16' area.

Phase 2 addressing 3 smaller apparatus bays including the connected apron and a small entrance area. The entire area measures 46' x 33' and will require repairs to the existing floor and the edges of the drain system.

All work is to be completed and billed the 2024 calendar year.

**Specifications**

- The material should add about 1/8 inch to the existing floor height. The material when dried should be able to sustain parking and movement of apparatus weigh 75,000 lbs. directly on the material, no additional padding is to be required.
- Repairs will need to be made to the first phase area.
- Correct drain wall lip so that water easily flows into the drain.
- Install in each bay, a 3" wide yellow stripe for apparatus parking guidance. This will be near the right side of each bay based on where existing lines are located with the assistance from FD personnel. These lines shall be the full depth of 33', for the smaller bays and limited to 36' for the larger bays.
- The hallway connecting the 2 bays is raised one step on each end. Each end shall have a 4" x 6' safety stripe to identify the step down.
- Small entrance way for the first 3 bays is raised one step and will need to have a 4" x 3' safety stripe at the bay entrance.
- Any control or construction joints shall be recut and cleaned (2 full depth at 44')

The contractor's proposal shall document in detail the steps to be taken, time lines for each phase and proposed overall schedule for the project. The following steps at a minimum shall be included in the proposal.

- How all repairs are to be completed,
- Surface preparation including any actions being taken by the vendor to keep the area clean,
- Priming including material to be used,
- Any moisture and/or vapor barrier and their thickness,

- Any binder layers and thicknesses,
- Methodology of adding color to the floor.
- Identify all layers of material to be added and thicknesses when appropriate.

The vendor is to supply sample colors similar to existing floor colors and safety colors for the line and step edges.

The department is responsible for turning over the apparatus bay floor spaces broom clean, dry, and free of any non-fixed items.

Prices are to be broken down as follows:

- Each Bay Area for preparation and flooring coating.
- Cost for floor repair assuming 40 Sq Ft needing repair.
- Additional Per Square foot cost for repair.
- Cost for the apron area.

Proposal is to include at least 5 references where the floors are over 5 years old and support trucks over 75,000 lbs.

The vendor may supply alternative solutions.

**Smaller bay area pictures.**

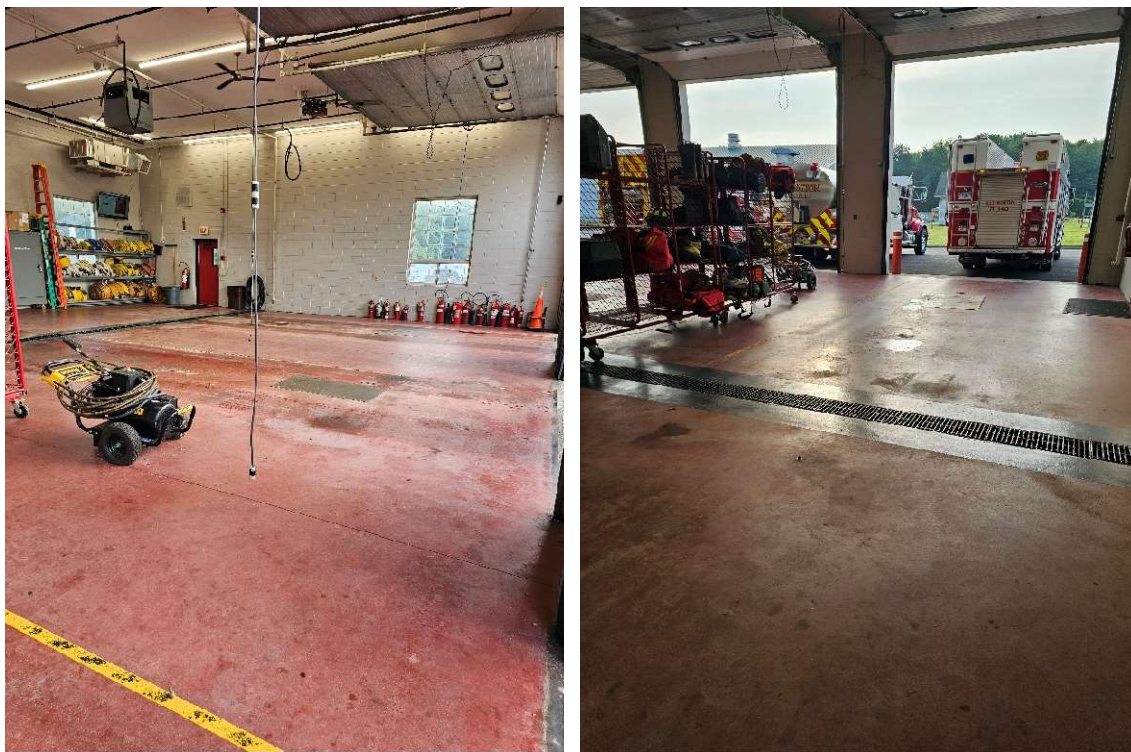


*Figure 1 Overall view of smaller 3 bay section.*

Most of the floor damage that needs to be repaired.



Larger 3 bay area, view of the far 2 bays and the first bay.



Apron area of the larger 3 bay area.

