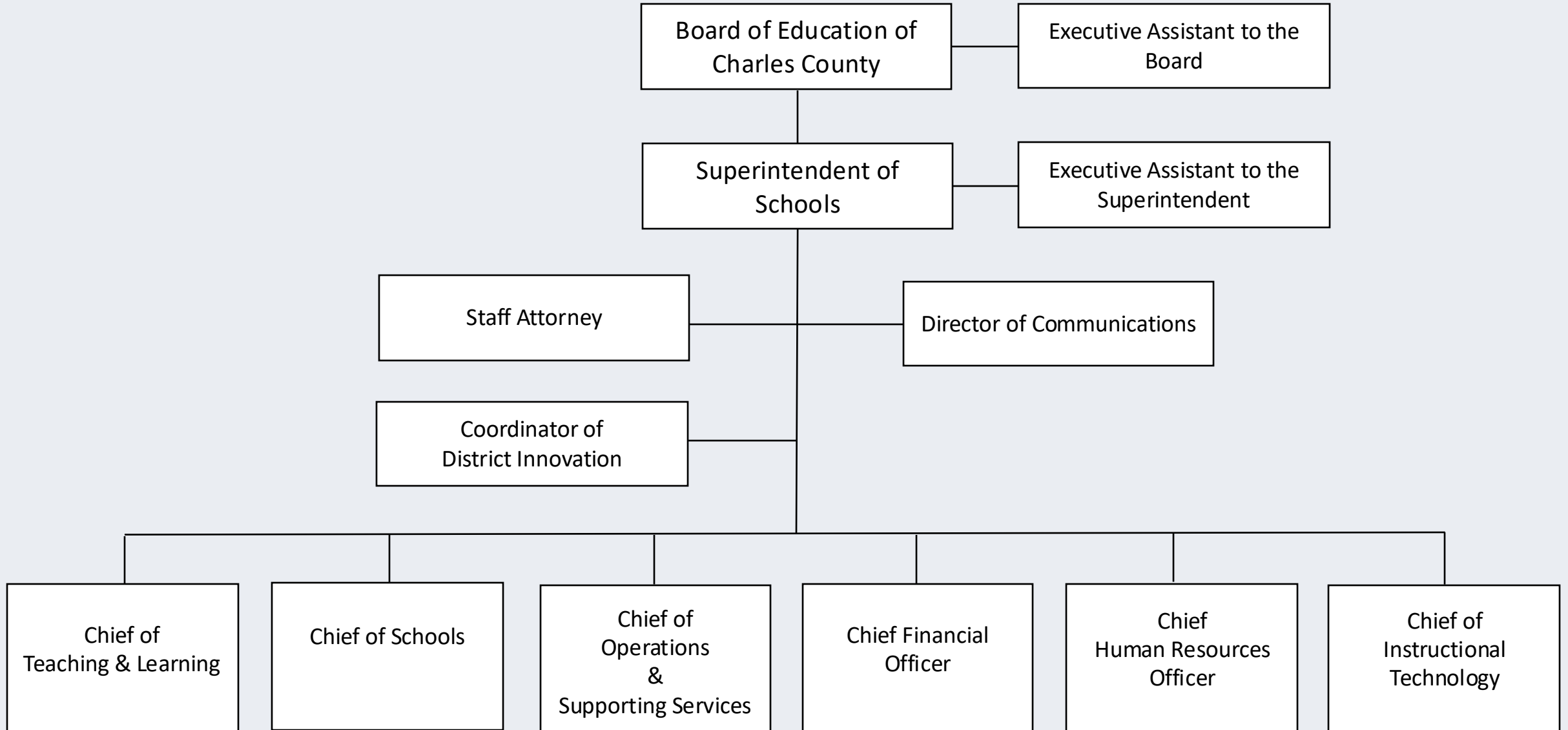


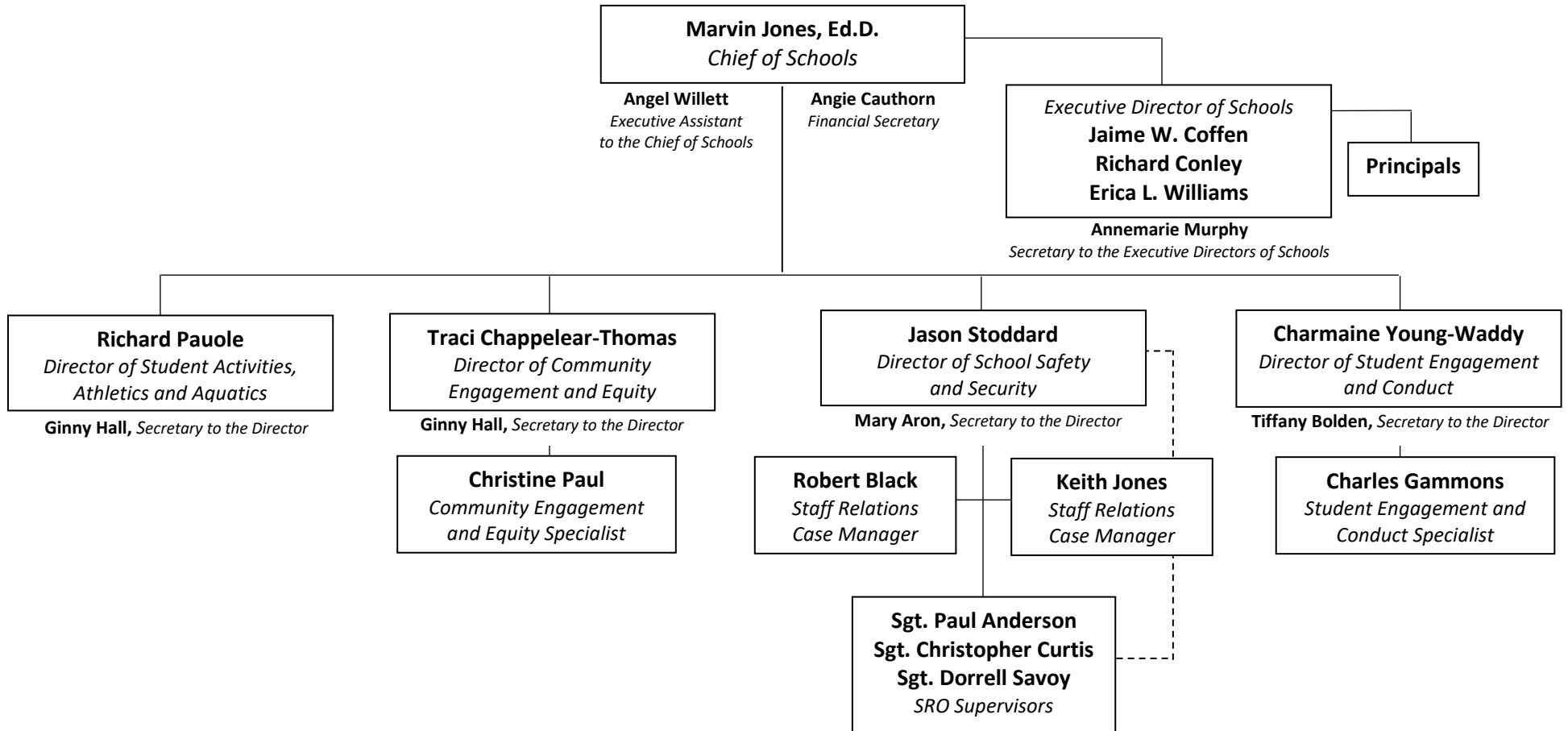


# Charles County Public Schools Organizational Chart

## SY 2024-2025



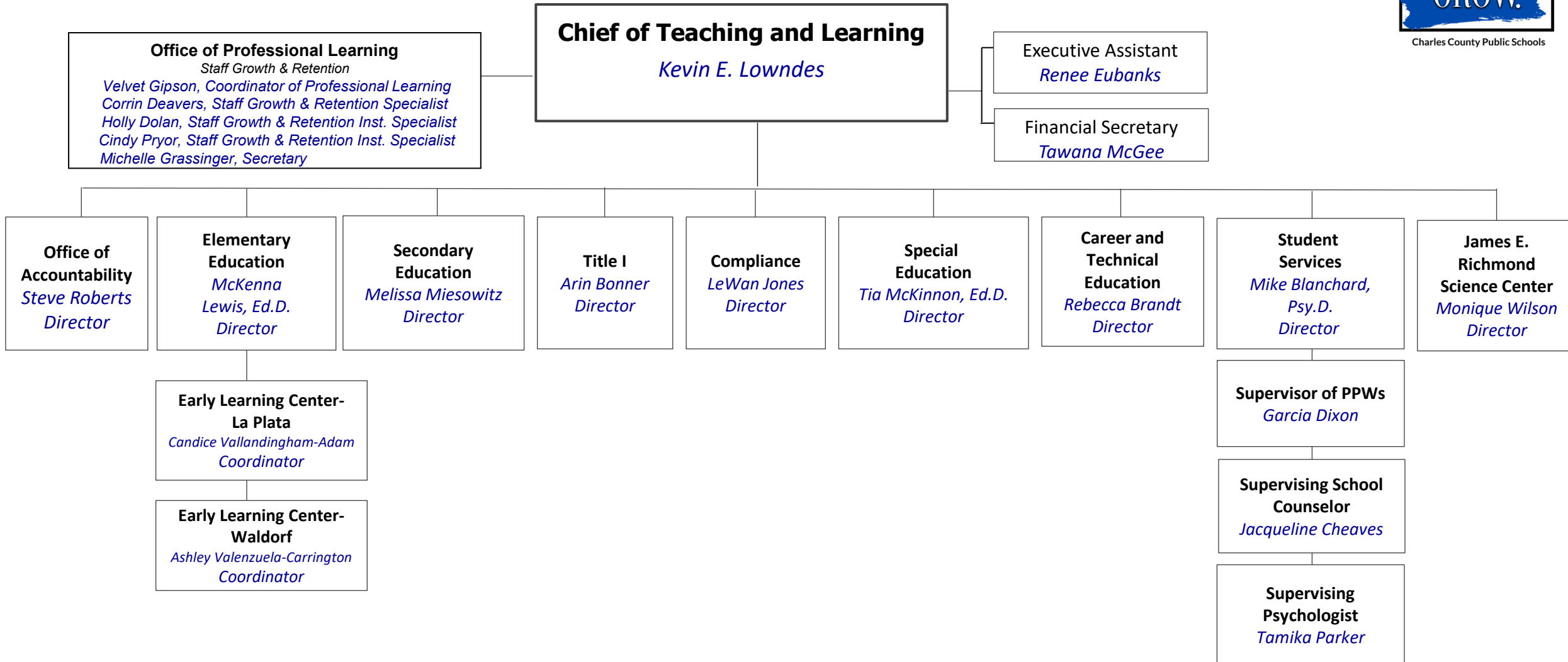
# Office of School Administration and Leadership



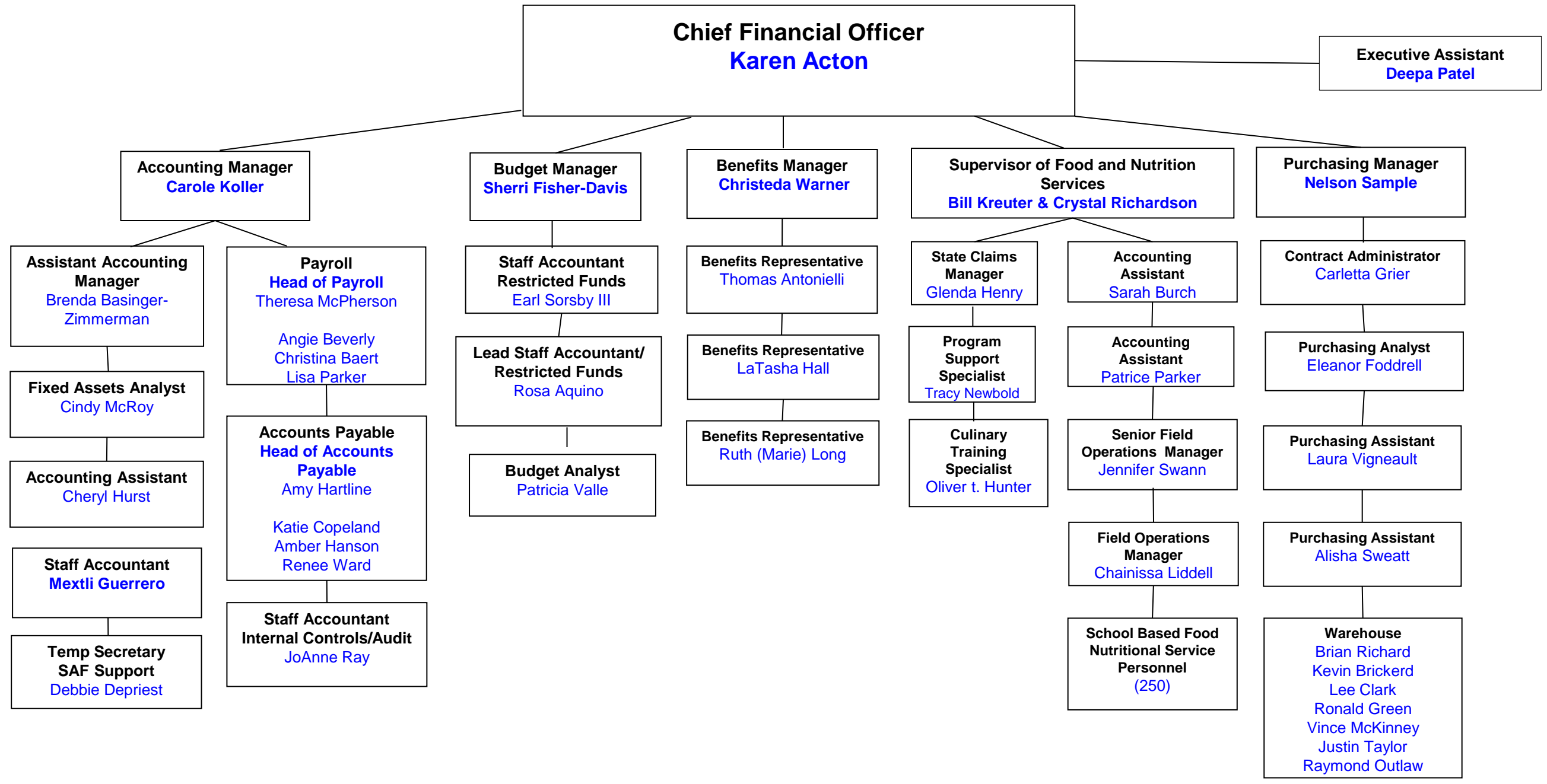
# OFFICE OF TEACHING AND LEARNING



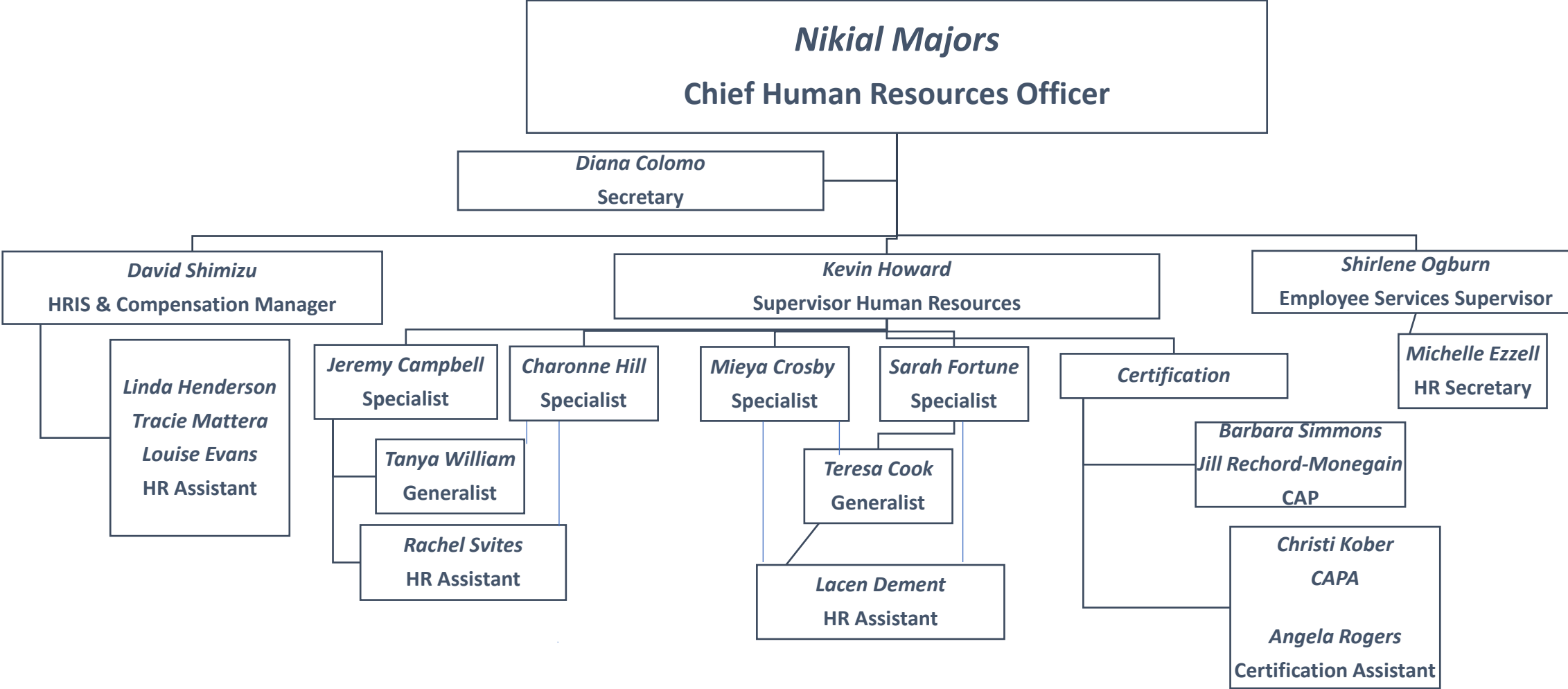
Charles County Public Schools



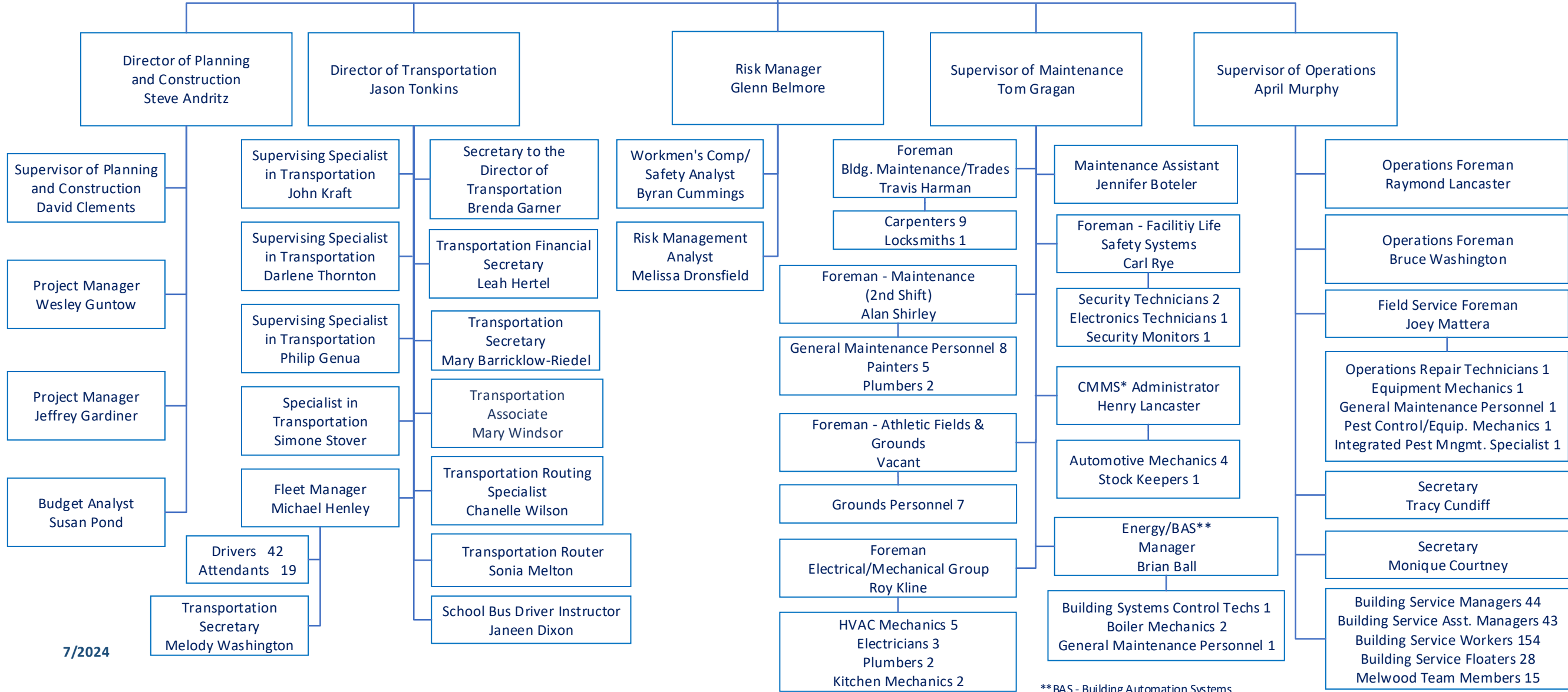
# OFFICE OF FISCAL SERVICES ORGANIZATIONAL CHART



# Office of Human Resources – Organizational Chart



# Charles County Public Schools - Operations & Supporting Services



7/2024

\*\*BAS - Building Automation Systems  
\*CMMS - Computerized Maintenance Management System



Charles County Public Schools

# Office of Technology

## Organizational Chart

