

DEDICATED TO EXCELLENCE IN EDUCATION

CENTRAL INTERMEDIATE UNIT 10 MENU OF SERVICES



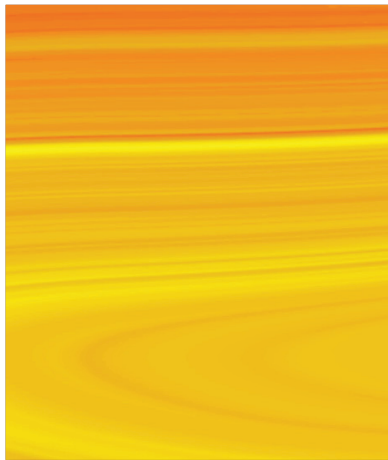
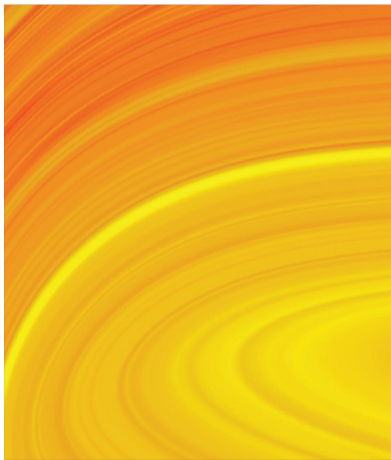
2024-2025

CENTRAL INTERMEDIATE UNIT

200 Shady Lane | Suite 100 | Philipsburg, PA 16866 | 814-342-0884 | info@ciu10.org

CENTRAL INTERMEDIATE UNIT 10

MENU OF SERVICES



DEDICATED TO EXCELLENCE IN EDUCATION

MISSION

The Central Intermediate Unit 10 provides innovative and engaging services which support equitable access to educational opportunities.

VISION

Strategic partnerships promoting equity, access, and innovation.

DEDICATED

TO EXCELLENCE IN EDUCATION



As the Executive Director of the Central Intermediate Unit 10 (CIU 10), I welcome you to our organization's Menu of Services document. The Central Intermediate Unit 10 was created by the Pennsylvania General Assembly in 1971 to serve the educational needs of public and non-public schools in Centre, Clearfield, and Clinton counties in the fields of student services, special education, education planning, and technology.

Over the years, the CIU 10 has expanded our services focusing on the unique needs of students, families, and educators in Centre, Clearfield, and Clinton counties and across the Commonwealth. Our highly skilled and dedicated staff support 12 school districts, four career and technology centers, four charter schools, and numerous non-public schools within the three county region.

As one of 29 intermediate units in the Commonwealth of Pennsylvania, we work collaboratively on the local, regional, and state level to support students and families. On behalf of our Board of Directors and staff, we are proud to be part of the work that is done in this region.

Francine Endler, Ed.D.

Executive Director
Central Intermediate Unit 10



TABLE OF CONTENTS

EXECUTIVE SERVICES

Welcome Message from CIU Executive Director Francine Endler.....	1
Chief School Administrator and Management Consultation	2
Chief School Administrators' Advisory Council.....	2
CIU Legislative Roundtable.....	2
Comprehensive Planning Process Support	2
Human Resources Services Support	2
State Mandates Newsletter	2

BUSINESS SERVICES

Message from Director Jon Rice	3
Annual Salary Survey.....	4
Central Repository of Contracts (CBAs, ACT 93, Superintendents, Business Managers)	4
CIU Joint Purchasing Annual Multipurpose Paper Bid.....	4
Educational Agency Business Office Services.....	4
School Business Officials Meeting.....	4

INFORMATION TECHNOLOGY SERVICES

Message from Director Lance Bunnell.....	5
Consortium-Based Pricing	5
Cyber Security	5
PA Media and Design Competition Regionals.....	5
Service Desk Offerings	5
Technology Meetings	5

CURRICULUM AND INNOVATION

Message from Director Dawn Hayes	6
Comprehensive Planning Leadership	6
Act 158 Graduation Pathways Consultation.....	7
Additional Targeted Support and Improvement (A-TSI).....	7
Classroom Diagnostic Tools (CDT)	7
CMU Computer Science (CS) Academy Training.....	7
Comprehensive Planning Process	8
Content Area Learning – Book Study Group.....	8
Continuing Professional Education (CPE)	8
Curriculum Collaborative.....	8
Customized Professional Learning	9
Cyber.org Cyber Security Training.....	9
Data Analysis.....	9
Data Analysis Services.....	9
Educator Evaluation	9

Equity Support	10
Engineering By Design	10
Engineering is Elementary	10
English Language Learner Networking.....	10
Galaxy Arts in Education.....	11
Generating Quality Science Tasks.....	11
Instructional Coaching Supports.....	11
Instructional Design	11
Librarians Networking.....	12
Master Scheduling Consultation.....	12
PA Value Added Assessment System (PVAAS) Support.....	12
Principal Network	13
Resource/Program Evaluation	13
Restorative Practices	13
Science Leadership Teams.....	13
Science Resource Review	14
Standards-Based Learning Workshops.....	14
STEM Networking	14
STEM Design Challenge	14
STEM Lending Library.....	14
STEM Supports	15
Strategic CSFORALL Resource and Implementation Tool (Script) Training	15
Student Events.....	15
Subject-Specific Curriculum Support for Teachers.....	16
Workshops and Professional Learning.....	16

PRESCHOOL EARLY INTERVENTION PROGRAM

Message from Director Roxann Emigh	17
Preschool Early Intervention Services.....	18
Local Interagency Coordinating Councils (LICC).....	18
Preschool Early Intervention Services Listing	18
Transition to Kindergarten	18

SPECIAL EDUCATION

Message from Director Erin Cernuska	19
Adaptive Physical Education	20
Assistive Technology.....	20
Audiology.....	20
Augmentative and Alternative Communication (AAC).....	20
Autism Consultation and Support.....	20
Autism Diagnostic Observation Schedule (ADOS)	21
BCBA Support	21
Blind/Vision Support Program	21

BrainSteps Consultation	21
Centre County Detention Center Education Programs	22
Centre and Clearfield County Incarcerated Youth Programs	22
Check & Connect	22
Clearfield Apartment Project	22
Counseling Services	22
Data Collection and Reporting System for Special Education	23
Deaf/Hard of Hearing (DHOH) Support Program	23
Enhanced Core Reading Instruction (ECRI).....	23
Equitable Participation (EP) Consultation and Training	25
Extended School Year (ESY).....	25
Functional Behavioral Assessments (FBA)	25
Gifted Network.....	25
Inclusive Technology Academy	26
Induction	26
Intensive Interagency Coordination.....	26
Interpreters.....	26
Language Essentials for Teachers of Reading and Spelling (LETRS)	27
Least Restrictive Environment (LRE)/ Inclusive Practices	27
Local Task Force	27
Multi-Tiered System of Supports (MTSS)/ Response to Intervention (RTI).....	28
Multi-Tiered System of Supports (MTSS)/ School-Wide/Positive Behavior Interventions and Supports (SWPBIS).....	28
Nonpublic School Program	28
Occupational Therapy	29
Orientation and Mobility (O&M)	29
Para-Conference.....	29
Paraeducator Highly Qualified	29
Personal Care Assistant	30
Physical Therapy.....	30
Pre-K Counts Evaluations.....	30
Psychological Services.....	30
Pulse: Principals Understanding How to Lead Special Education	31
Quality Indicators of Emotional Support Services and Programs (QIESP).....	31
Renew	31
Restorative Practices	31
Restorative Practices Justice Conferencing	32

Safety Care® Training	32
School-Based Access Program (SBAP)	32
Secondary Transition Services	32
Social Work Services	33
Special Education Supervision	33
Speech and Language Professional Development	33
Speech/Language Therapy Services	33
Supervision of Clinical Fellowship Year (CFY).....	34
Telepresence Robots Lending Library.....	34
Trauma Skills Training.....	34

NON-PUBLIC STUDENT SERVICES

Counseling Services	35
Deaf/Hard of Hearing (DHOH) Support Program	35
Enrichment	36
Equitable Participation (EP) Consultation and Training	36
Occupational Therapy	36
Psychological Services.....	36
Remedial Reading / Math.....	37
Social Work Services	37
Speech / Language Therapy Services	37
Standardized Testing and Scoring	38
Vision Support Program	38

ADULT EDUCATION

Message from Director Jenna Witherite	39
Business Services Team	39
Central Pennsylvania Workforce Development Board.....	40
Clearfield County Career and Technology Center Local Advisory Board	40
North Central Operator Consortium	40

SPECIAL PROJECTS

Central Intermediate Online Learning Association - CIOLA.....	41
Options for Every Learner	41
Benefits of CIOLA.....	41
Everything DISC® Workplace Trainings	42
Region 7 Safe Schools Conference.....	42
Safe Schools Training.....	42
Safe Schools Networking	42

APPENDIX

Program Contacts	44
------------------------	----

MESSAGE FROM

Francine Endler, Ed.D.

The Central Intermediate Unit Executive Services department provides administrative leadership for the organization by providing support to the other seven operational departments.

It fosters the relationships with the Intermediate Unit's school entities, the other 28 Intermediate Units, the PA Department of Education, and our business and community partners.

EXECUTIVE SERVICES

The Central Intermediate Unit (CIU) Executive Office leads the implementation of the organization's mission and vision. The CIU's mission is to support equal access to educational opportunities by providing innovative and engaging educational services for learners from birth to adult. Under the leadership of Executive Services, the Central Intermediate Unit is organized into seven departments:

1. **Business Services**
2. **Information Technology**
3. **Curriculum and Innovation Department**
4. **Preschool Early Intervention Program**
5. **Special Education and Non-Public Student Services**
6. **Adult Education**
7. **Special Projects**

The operation of Human Resources is connected to the Executive Services department. The Executive Services department serves as the conduit to the Board of Directors and provides collaborative leadership to the 12-member school districts, four career and technology centers, and four charter schools. In addition, Executive Services serves in the state-level organizations, such as the Pennsylvania Association of Intermediate Units (PAIU).



FOR
MORE
INFO

**Francine
Endler, Ed.D.**
Executive
Director

fendler@
ciu10.org |

814-342-0884
ext. 3031

EXECUTIVE SERVICES

CHIEF SCHOOL ADMINISTRATOR AND MANAGEMENT CONSULTATION

Francine Endler, Ed.D.
fendler@ciu10.org | 814-342-0884 ext. 3031

Complimentary

The Central Intermediate Unit can provide support and coaching to chief school administrators on a variety of topics faced by superintendents or Career Center directors.

CHIEF SCHOOL ADMINISTRATORS' ADVISORY COUNCIL

Francine Endler, Ed.D.
fendler@ciu10.org | 814-342-0884 ext. 3031

Complimentary

The Chief School Administrators' Advisory Council serves as a forum for chief school administrators to discuss informed practices of school leadership and solve problems of practice. The CIU Executive Director serves as the chairperson for the council and organizes activities such as: monthly business meetings, professional development opportunities, and networking.

CIU LEGISLATIVE ROUNDTABLE

Francine Endler, Ed.D.
fendler@ciu10.org | 814-342-0884 ext. 3031

Complimentary

The Central Intermediate Unit Legislative Roundtable provides annual opportunities for school entities to engage in a forum with members of the general assembly.

COMPREHENSIVE PLANNING PROCESS SUPPORT

Francine Endler, Ed.D.
fendler@ciu10.org
814-342-0884 ext. 3031

Complimentary or Fee for Service

Comprehensive Planning Process Support can assist school entities for all Future Ready Comprehensive Planning levels. The CIU has the latest state-level training for this process and can effectively provide leadership and targeted assistance to school entities.

HUMAN RESOURCES SERVICES SUPPORT

Laurie Castagnolo
lcastagnolo@ciu10.org
814-342-0884 ext. 3043

Complimentary or Fee for Service

The Human Resources department can assist school entities with HR processes and maximize current talent pools. Services include but are not limited to recruitment and staffing, new staff orientation, management of benefits and compensation plans, and professional development training.

STATE MANDATES

CENTRE, CLEARFIELD
AND CLINTON COUNTY
SCHOOL DISTRICTS

STATE MANDATES NEWSLETTER

Francine Endler, Ed.D.
fendler@ciu10.org
814-342-0884 ext. 3031

Complimentary

The CIU licenses a summary of educational mandates to serve as an informational tool for public school administrators and school directors. This document is a summary compilation of the majority of mandates required of Pennsylvania's public school districts. PA school districts are required to comply with federal, state, and local mandates, which outline in detail what school districts must do, how they must do it, and how much funding, if any, may be allocated for each mandate. Mandates come from several sources. The federal government articulates some of these requirements; however, most mandates come from state laws, regulations, and other types of guidance issued from Pennsylvania.

BUSINESS SERVICES



MESSAGE
FROM

FOR
MORE
INFO

Jon Rice, CPA
Director of
Business
Services

jrice@ciu10.org

814-342-0884
ext. 3046

The Business Services department has responsibility for the joint purchasing activities for the Central Intermediate Unit Joint Purchasing Consortium for multi-purpose paper. The joint purchasing program's goal is to obtain quality products and services at the lowest price.

Participating school districts and career and technology centers purchase paper supplies while eliminating the costs of the bid procedures. The program assists school districts by preparing specifications, advertising and analyzing bids, conducting bid openings, recommending bid awards, and notifying successful and unsuccessful bidders. In addition, participants save money because of volume purchasing.

DIRECTOR OF BUSINESS SERVICES

The Central Intermediate Unit provides services to internal and external clients. The department of Business Services directs the organization's financial operations; processes payroll, benefits, purchase orders, accounts payable, and accounts receivable; coordinates insurance policies; and has budgeting and financial reporting responsibility for all programs.

BUSINESS SERVICES



ANNUAL SALARY SURVEY

Jon Rice, CPA | jrice@ciu10.org
814-342-0884 ext. 3046

Complimentary

This annual survey captures each school district's salary information by position.

CENTRAL REPOSITORY OF CONTRACTS (CBAS, ACT 93, SUPERINTENDENTS, BUSINESS MANAGERS)

Jon Rice, CPA | jrice@ciu10.org
814-342-0884 ext. 3046

Complimentary

The repository for contracts, collective bargaining agreements, and compensation plans for every member district is maintained in a central location and can be accessed by any member district to use.



CIU JOINT PURCHASING ANNUAL MULTIPURPOSE PAPER BID

Joni Hayward
jhayward@ciu10.org
814-342-0884 ext. 3049

Complimentary

The CIU serves as the agent for the joint purchasing consortium for member districts to purchase multi-purpose paper. The CIU performs an annual review of bid documentation and required member district documentation, identifies participants, advertises and coordinates bidding, advises successful and unsuccessful bidders, and provides the successful vendor with the contact at each district to obtain contract documentation needed.



EDUCATIONAL AGENCY BUSINESS OFFICE SERVICES

Jon Rice, CPA | jrice@ciu10.org
814-342-0884 ext. 3046

Fee for Service

The CIU 10 has the ability to contract with local entities for assistance in Business Office services, such as payroll, during staffing transitions within local schools.

SCHOOL BUSINESS OFFICIALS MEETING

Jon Rice, CPA | jrice@ciu10.org
814-342-0884 ext. 3046

Complimentary

At the start of each school year, the CIU identifies scheduled dates and times for the participating school district Business Officials' meetings. Each meeting covers pertinent information with the Business Managers and provides an open forum for additional topics of interest.

INFORMATION TECHNOLOGY

MESSAGE FROM DIRECTOR

The CIU Information Technology department provides support to our member districts, private and non-public schools, as well as the employees of the Central Intermediate Unit. As a customer-focused department, we are always looking to add services that our member schools and districts may find valuable. For more information or to suggest a service that isn't listed, please contact us.

CONSORTIUM-BASED PRICING

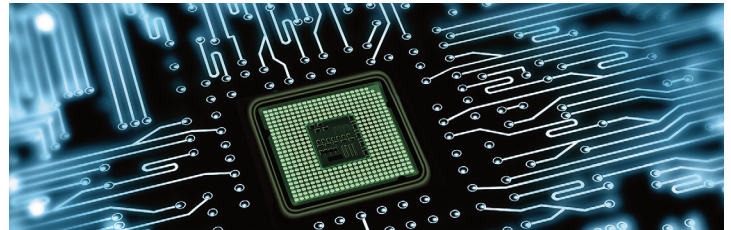
Complimentary

The Central Intermediate Unit currently offers consortium-based pricing for both hardware and software in conjunction with our business department. Our primary focus is to offer our partners the ability to leverage reduced pricing and centralized distribution by providing this consortium-based pricing upon state, federal, and local grants and initiatives.

CYBER SECURITY

Fee for Service

Internal and external scans, chief information security officer (CISO) as a service, device monitoring and incident response, change management and vulnerability management.



FOR ALL IT SERVICES

Lance Bunnell | lbunnell@ciu10.org | 814-342-0884 ext. 4151

PA MEDIA AND DESIGN COMPETITION REGIONALS

Complimentary

The PA Media and Design Competition is an annual event that highlights Pennsylvania students' application skills, creativity, and knowledge. Through this competition, students are able to unleash their creativity, learn how to convey information more dynamically, and enhance the learning process.

SERVICE DESK OFFERINGS

Fee for Service

The CIU 10 Technology Department offers helpdesk services, back up, supplemental and full manage services.

TECHNOLOGY MEETINGS

Complimentary

For nearly 15 years, CIU 10 has hosted centralized meetings for Technology Directors, Principals, Superintendents, and IT staff to discuss current and future technology initiatives, trends, and threats to educational technology.

FOR
MORE
INFO

Lance Bunnell
Director of
Information
Technology

lbunnell@
ciu10.org

814-342-0884
ext. 4151

CURRICULUM AND INNOVATION

The CIU Curriculum and Innovation department's primary goal is to advance the practice of teaching and learning for the schools and students we serve. Through innovative practice, we strive to be leading experts in curriculum services, operating as an integral part of our local, regional, and state education community. As a liaison between the Pennsylvania Department of Education (PDE) and our schools, we serve as a support for PDE initiatives and programs, while working with our schools to assist with implementation.

Our research-based effective professional development, workshops, and services provide opportunities for educators to continually advance their practice. Our Curriculum and Innovation Team is comprised of highly qualified and talented professionals, with years of experience in the field of education. Our staff provides a variety of services that are tailored to the unique needs of each of our schools. Through a multitude of resources, networks, and services, the CIU 10 Curriculum and Innovation Department looks forward to partnering with you to positively impact teaching and learning!



COMPREHENSIVE PLANNING LEADERSHIP

Dawn Hayes, Ed.D. | dhayes@ciu10.org | 814-342-0884 ext. 3036

Fee for Service

The CIU 10 Curriculum & Innovation Department is available to lead districts' Comprehensive Planning Process by assembling teams, facilitating planning meetings, assisting teams with writing and revising comprehensive plans, and providing targeted technical assistance.

MESSAGE
FROM

DIRECTOR OF CURRICULUM AND INNOVATION

On behalf of the Curriculum and Innovation department, I would like to thank you for taking the time to consider the services we offer.

Our department is staffed by highly-skilled professionals who are ready to work with you to provide innovative support and assist with crafting services to your specific needs.

FOR
MORE
INFO

**Dawn Hayes,
Ed.D.**

Director of
Curriculum and
Innovation

[dhayes@
ciu10.org](mailto:dhayes@ciu10.org)

814-342-0884
ext. 3036

ACT 158 GRADUATION PATHWAYS CONSULTATION

Dawn Hayes, Ed.D.
dhayes@ciu10.org | 814-342-0884 ext. 3036

Complimentary

The CIU 10 Curriculum & Innovation department offers individualized support to districts with Act 158 Graduation Pathways Implementation. The CIU team will meet with administrators and school counselors to clarify legislation, plan implementation and communication, and offer insight into tracking tools available for schools to use. Statewide trainings are also shared with administrators when they arise, and updates from the Pennsylvania Department of Education (PDE) will be clarified and communicated on an ongoing basis.

ADDITIONAL TARGETED SUPPORT AND IMPROVEMENT (A-TSI)

Dawn Hayes, Ed.D.
dhayes@ciu10.org | 814-342-0884 ext. 3036

Complimentary

The Pennsylvania Department of Education (PDE) designed the Targeted Support and Improvement (A-TSI and TSI) initiative to build the capacity of Local Education Agencies (LEAs) with schools designated for A-TSI and TSI to implement a cycle of improvement focused on improving systems, programs, and outcomes for one or more student groups. The CIU 10 will collaborate with A-TSI schools to develop technical assistance plans and to support their school improvement processes.

CLASSROOM DIAGNOSTIC TOOLS (CDT)

Dawn Hayes, Ed.D.
dhayes@ciu10.org | 814-342-0884 ext. 3036

Complimentary

The Classroom Diagnostic Tools (CDT) assessment suite offers teachers and administrators a method to assess student mastery of eligible content on a grade-level basis. Support offered includes planning and implementation consultations, CDT data analysis, data team meeting protocols and tools, technical assistance on accessing interactive reports, and utilizing CDT data as part of multiple measures of student data for Multi-Tiered System of Supports (MTSS) purposes.

CMU COMPUTER SCIENCE (CS) ACADEMY TRAINING

Melissa Duckworth, MS
mduckworth@ciu10.org | 814-342-0884 ext. 3054

Fee for Service

CMU Computer Science (CS) Academy is a free, online, interactive high school computer science curriculum. CS Academy provides a curriculum framework, teacher training, an online interactive textbook, and online technical support. The CIU 10 will establish teacher cohorts around programming with Python using CMU's CS Academy CS 1 Fundamentals curriculum as the driver. The CIU 10 will run a teacher cohort with a minimum of 10 educators participating in 12 hours of professional learning on CS Academy. Participating districts can plan to teach it starting in the fall of 2022 or in 2023 – whatever best matches the need for a CS course.



COMPREHENSIVE PLANNING PROCESS

Dawn Hayes, Ed.D.
dhayes@ciu10.org | 814-342-0884 ext. 3036

Complimentary

The CIU 10 Curriculum & Innovation department helps districts with their Comprehensive Planning Process by keeping track of due dates and extensions, serving on comprehensive planning collaborative teams, and providing technical assistance with the Future Ready Comprehensive Planning Portal.

CONTENT AREA LEARNING BOOK STUDY GROUPS

Dawn Hayes, Ed.D.
dhayes@ciu10.org | 814-342-0884 ext. 3036

Fee for Service

The CIU 10 Curriculum & Innovation supports teachers in their professional learning through our the Content All Stars series. The Content All Stars series includes monthly professional learning communities in the areas of English/Language Arts, Arts education, Science, Mathematics, STEM, Social-Emotional Wellness, and Social Studies. This series is organized to allow educators to collaborate virtually after school to share evidence-based practices across districts.

CONTINUING PROFESSIONAL EDUCATION (CPE)

Christinia Reifer
creifer@ciu10.org | 814-342-0884 ext. 3030

Fee for Service

The CIU 10 Curriculum & Innovation Department offers a multitude of PDE approved Continuing Professional Education (CPE) courses. Act 48 and CPE credit is awarded for completion through the CIU 10. A catalog of current offerings is available on the CIU 10 website and is updated monthly. Individuals may register through the online system.

CURRICULUM COLLABORATIVE

Dawn Hayes, Ed.D.
dhayes@ciu10.org | 814-342-0884 ext. 3036

Complimentary

The CIU Curriculum & Innovation Department hosts monthly meetings for all Curriculum Coordinators in Centre, Clinton, and Clearfield counties. These meetings are designed to support a network of educators who are responsible for curriculum development, assessment, and professional learning. The primary goal of the Council is to support teaching and learning in Centre, Clinton, and Clearfield County schools.



CUSTOMIZED PROFESSIONAL LEARNING

Dawn Hayes, Ed.D.
dhayes@ciu10.org
814-342-0884 ext. 3036

Fee for Service

The CIU 10 Curriculum & Innovation Department supports districts in creating customized professional development sessions to support teacher and staff learning within their districts. Sessions and learning series are designed with individual district's preferences for implementation in mind, and can be delivered in-person, synchronously, asynchronously, or in a blended format. Learning sessions model evidence-based practices and are constructed using adult learning theory.

CYBER.ORG CYBER SECURITY TRAINING

Melissa Duckworth, MS
mduckworth@ciu10.org
814-342-0884 ext. 3054

Fee for Service

Cybersecurity Basics at cyber.org is a free introductory course for students in grades K-12. This course introduces cybersecurity topics that affect our everyday life in plain, simple language ensuring it is approachable to beginners. The course can be taught in any order and by any teacher. This professional learning experience will provide an overview of the program and an introduction to the free resources provided by Cyber.org.

DATA ANALYSIS

Dawn Hayes, Ed.D.
dhayes@ciu10.org | 814-342-0884 ext. 3036

Complimentary

Through the ongoing system of support, data analysis services are offered to districts to assist with the interpretation of reports at the district, school, grade, classroom, or individual student level. Supports may include data team meeting support, data protocols and analysis tools, trend reporting, item analysis reporting, and crafting a robust data story for improved student outcomes.

DATA ANALYSIS SERVICES

Dawn Hayes, Ed.D.
dhayes@ciu10.org | 814-342-0884 ext. 3036

Fee for Service

The CIU 10 Curriculum & Innovation Department offers differentiated data analysis services to districts which can include the interpretation of assessment reports and data sources to create actionable recommendations for improved student outcomes.

EDUCATOR EVALUATION

Dawn Hayes, Ed.D.
dhayes@ciu10.org | 814-342-0884 ext. 3036

Fee For Service

The CIU 10 Curriculum & Innovation Department assists administrative teams to refine evaluation processes and protocols, define evaluation practices, and help prepare professional development sessions for teachers.

CURRICULUM & INNOVATION



EQUITY SUPPORT

Dawn Hayes, Ed.D.
dhayes@ciu10.org
814-342-0884 ext. 3036

Complimentary

Equity is a Multi-Tiered System of Supports (MTSS) Framework. This framework is offered to help districts conduct equity audits, identify curricular elements that need a shift to provide equitable access to all students, and share up-to-date research and professional development with teachers and administrators.

ENGINEERING BY DESIGN

Melissa Duckworth, MS
mduckworth@ciu10.org | 814-342-0884 ext. 3054

Fee for Service

Engineering by Design (EbD) is a comprehensive PreK-12 STEM resource that provides lesson plans, assessments, worksheets, and presentations. Downloads of the courses are free to PA educators and



are intended to be taught without any costly materials or STEM labs. EbD is aligned with national standards as well as the STEL standards, which are the foundation for the proposed technology and engineering standards in PA. Each course has an environmental theme aligning with the direction of STEM education in the state. The courses are also built around an inquiry-based, constructionist model which is research-supported pedagogy for accelerating student learning.

ENGINEERING IS ELEMENTARY

Melissa Duckworth, MS
mduckworth@ciu10.org | 814-342-0884 ext. 3054

Karen Woods
kwoods@ciu10.org | 814-342-0884 ext. 3037

Complimentary or Fee for Service

Learn about the key components of this program and how it can be utilized to support teachers implementing the PA STEELS standards in their classrooms.

ENGLISH LANGUAGE LEARNER NETWORK

Jordan Yarwood | jyarwood@ciu10.org | 814-342-0884 ext. 3045

Fee for Service

The CIU 10 Curriculum & Innovation department offers English as a Second Language (ESL) Program support services that assist schools with students from various cultural and linguistic backgrounds throughout the three counties. The CIU team collaborates closely with district personnel and content area teachers to provide networking opportunities that support multilingual learners across grade-level curricula and keep districts up-to-date and current regarding state-level program initiatives and mandates.

CURRICULUM & INNOVATION

GALAXY ARTS IN EDUCATION

Karen Woods
kwoods@ciu10.org
814-342-0884 ext. 3037

Fee for Service

The Central Intermediate Unit 10's Galaxy Arts in Education (AIE) Program is a partner organization of the Pennsylvania Council on the Arts (PCA). CIU 10's Galaxy Program is dedicated to ensuring opportunities for quality arts education services in Clearfield, Centre, Clinton, and Huntingdon counties.

The Galaxy Coordinator can assist schools and community organizations with planning residencies or artist-for-a-day services, as well as to help plan lessons that enrich content area learning.



GENERATING QUALITY SCIENCE TASKS

Melissa Duckworth, MS
mduckworth@ciu10.org | 814-342-0884 ext. 3054

Dawn Hayes, Ed.D.
dhayes@ciu10.org | 814-342-0884 ext. 3036

Complimentary or Fee for Service

It's important that assessments measure and signal what we value. With the instructional shifts that are a part of the shift in the PA STEELS standards, we use this session to explore the features of quality phenomenon/problem-driven, three-dimensional assessments.

INSTRUCTIONAL COACHING SUPPORTS

Dawn Hayes, Ed.D. | dhayes@ciu10.org | 814-342-0884 ext. 3036

Fee for Service

The CIU 10 Curriculum & Innovation Team supports schools in their implementation of instructional coaching as a form of evidence-based professional learning. The CIU 10 offers the Collaborative Coaching Network (CCN) as a monthly differentiated professional learning opportunity for instructional coaches and teacher leaders. This network allows for cross-district coaching support and learning. In addition, the CIU offers administrators support in maximizing instructional coaching within their systems and site-based instructional coaching and consultation.

INSTRUCTIONAL DESIGN

Dawn Hayes, Ed.D. | dhayes@ciu10.org | 814-342-0884 ext. 3036

Complimentary or Fee for Services

Instructional design services including the development of courses are offered through CIU Instructional Consultants. This service focuses on concepts such as gaining students' attention to get them ready for a lesson, sharing learning objectives, stimulating recall of prior information, presenting content, enhancing engagement, providing feedback, assessing performance, and much more.

LIBRARIANS NETWORKING

Melissa Duckworth, MS
mduckworth@ciu10.org | 814-342-0884 ext. 3054

Dawn Hayes, Ed.D.
dhayes@ciu10.org | 814-342-0884 ext. 3036

Fee for Service

Join a group of local district librarians for coordinated regular professional learning on topics of interest, sharing of best practices, and coordinating efforts such as group consortium rates for commonly used library resources.

MASTER SCHEDULING CONSULTATION

Dawn Hayes, Ed.D.
dhayes@ciu10.org | 814-342-0884 ext. 3036

Complimentary

The CIU 10 Curriculum & Innovation Department can assist districts as they examine their master schedules to identify possibilities for programming, interventions, and enrichment.

NGSX PLANS TRAINING

Melissa Duckworth, MS
mduckworth@ciu10.org | 814-342-0884 ext. 3054

Dawn Hayes, Ed.D.
dhayes@ciu10.org | 814-342-0884 ext. 3036

Fee for Service

Professional learning for district and school administrators, curriculum directors, special education administrators, instructional coaches, science leaders, and STEM teacher leaders across the region to build an understanding of shifts in science

education that can lead to more equitable, student-centered, rigorous science instruction. Instructional leadership and active support at the building and district level is an essential part of a successful outcome for teachers of science and for their students. This pathway experience will help building and district teams identify what needs to be in place to help this new vision for science education become a reality.

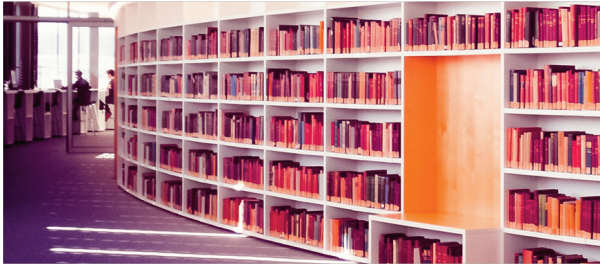
PA VALUE ADDED ASSESSMENT SYSTEM (PVAAS) SUPPORT

Dawn Hayes, Ed.D.
dhayes@ciu10.org
814-342-0884 ext. 3036

Complimentary

The PA Value Added Assessment System (PVAAS) Support offers teachers and administrators a method to assess student growth in relation to eligible content on a grade-level basis. Support offered includes planning and implementation consultations, PVAAS data analysis, data team meeting templates, technical assistance on accessing interactive reports, and utilizing PVAAS growth data as part of multiple measures of student data for Multi-Tiered System of Supports (MTSS) purposes.





PRINCIPAL NETWORK

Dawn Hayes, Ed.D.
dhayes@ciu10.org | 814-342-0884 ext. 3036

Complimentary

The CIU 10 Curriculum & Innovation Department collaborates with school leaders in a monthly networking series using an evidence-based learning approach that focuses on student achievement and problem-solving efforts. The network shares best practices, challenges, and issues that foster or inhibit individual leadership efforts. The network uses a collaborative model to discuss and solve challenges from individual buildings and districts. By creating a sense of community, increasing capacity, and implementing action, principal networks show strong trends of changing school cultures and improving student achievement.

RESOURCE/ PROGRAM EVALUATION

Dawn Hayes, Ed.D.
dhayes@ciu10.org
814-342-0884 ext. 3036

Complimentary

When considering the purchase of a tool or program, it is critical to evaluate and determine if it will meet the academic needs of students, instructional needs of teachers, alignment needs of districts, and security needs of all users. The CIU 10 Curriculum & Innovation Team can aid in evaluating potential tools and programs.



RESTORATIVE PRACTICES

Christine Sanker, M.Ed. | csanker@ciu10.org
814-342-0884 ext. 3032

Fee for Service

Restorative practices are used to build a team's fundamental theory and practices for engaging with students, staff, and parents in the school setting. Learn how to set high expectations that are supportive, provide direct feedback that fosters accountability, and the most effective methods to resolve common conflicts. Participants also learn how to facilitate circles, an essential process for creating a positive learning environment and school culture. Circles may be used to build social capital, resolve social problems, and respond when harm occurs.

SCIENCE LEADERSHIP TEAMS

Melissa Duckworth, MS
mduckworth@ciu10.org | 814-342-0884 ext. 3054

Dawn Hayes, Ed.D.
dhayes@ciu10.org | 814-342-0884 ext. 3036

Complimentary or Fee for Service

As schools journey along their implementation of the new PA STEELS standards, the science leadership team will meet together to discuss and learn about the best practices in the field and how they can best be implemented in your home district.

SCIENCE RESOURCE REVIEW

Melissa Duckworth, MS
mduckworth@ciu10.org
814-342-0884 ext. 3054

Dawn Hayes, Ed.D.
dhayes@ciu10.org
814-342-0884 ext. 3036

Complimentary or Fee for Service

High Quality Instructional materials help provide a strong foundation for science practice in schools. Explore the tools for evaluating, selecting, and modifying instructional materials that support the PA STEELS standards in your district.

STANDARDS-BASED LEARNING WORKSHOPS

Dawn Hayes, Ed.D.
dhayes@ciu10.org
814-342-0884 ext. 3036

Fee For Service

Standards-Based Learning Workshops are offered to help administrators and teachers prepare to implement newly approved standards and learning experiences. As the conduit between the Pennsylvania Department of Education (PDE) and Local Education Agencies (LEAs), the Curriculum & Innovation Team can differentiate professional development sessions tailored to the individual needs of districts and help a smooth transition to new learning opportunities.

STEM NETWORKING

Melissa Duckworth, MS
mduckworth@ciu10.org | 814-342-0884 ext. 3054

Complimentary

The CIU 10 STEM Collaborative is a countywide team of STEM educators who participate collaboratively in professional learning activities. The group meets to identify instructional practices that “unlock” STEM education for students and design learning experiences for classroom use. Teachers work to determine “fits” within the team to maximize collaboration and professional learning for the benefit of students.

STEM DESIGN CHALLENGE

Melissa Duckworth, MS
mduckworth@ciu10.org | 814-342-0884 ext. 3054

Fee for Service

The STEM Design Challenge is a competition for students in grades 4-8 in which they make a project out of K’NEX pieces and recyclable materials. Students work in teams of two to four to design and build their project. The process includes a design notebook, blueprint, and prototype presentation. The CIU holds regional competitions each spring in two divisions: Grades 4-6 and Grades 7-8.

STEM LENDING LIBRARY

Melissa Duckworth, MS
mduckworth@ciu10.org | 814-342-0884 ext. 3054

Fee for Service

The CIU 10 Curriculum & Innovation department provides available STEM and computer science-related equipment upon request by the Local Education Agency (LEA). LEAs may subscribe annually to the lending library for a fee of \$300 per LEA. Equipment is loaned in increments of two calendar weeks (“borrowing period”). Renewal periods may be available to the LEA based upon availability. Professional learning, STEM coaching, and tutorials are available upon request to library members. A complete list of available tools can be found on the CIU 10 website.

STEM SUPPORTS

Melissa Duckworth, MS
mduckworth@ciu10.org | 814-342-0884 ext. 3054

Complimentary

The Pennsylvania STEM Initiative vision is to increase and diversify the number of educators prepared to provide rigorous STEM educational experiences P-20 and increase and diversify the number of students included in building STEM skills/competencies from P-20 to the workforce.

STRATEGIC CSFORALL RESOURCE AND IMPLEMENTATION TOOL (SCRIPT) TRAINING

Melissa Duckworth, MS
mduckworth@ciu10.org | 814-342-0884 ext. 3054

Karen Woods
kwoods@ciu10.org | 814-342-0884 ext. 3037

Complimentary or Fee for Service

New Group Onboarding

The SCRIPT - the Strategic CSforALLResource and Implementation Tool (SCRIPT) is a framework to guide teams of district administrators, school leaders, and educators through a series of collaborative visioning, self-assessment, and goal-setting exercises to create or expand upon a computer science education implementation plan for their students (CSforALL).

Cohort Networking

Collaborate with a group of other participants that have taken part in the SCRIPT Training to discuss best practices for implementation and innovative ideas being utilized by groups.

STUDENT EVENTS

Dawn Hayes, Ed.D.
dhayes@ciu10.org
814-342-0884 ext. 3036

Fee for Service

The CIU 10 Curriculum & Innovation Team hosts a variety of student events to assist schools in offerings to enhance content and connect their learners to authentic education experiences. Schools can enroll individual students and teams in events such as: CIU 10 Elementary Reading Competition, Poetry Out Loud, CIU 10 Debate Competition, CIU 10 Poetry Competition, Math 24, K'Nex Challenge, Destination Imagination, National History Day, and the Governor's STEM Competition.



CURRICULUM & INNOVATION



SUBJECT-SPECIFIC CURRICULUM SUPPORT FOR TEACHERS

Dawn Hayes, Ed.D.
dhayes@ciu10.org
814-342-0884 ext. 3036

Complimentary

The CIU 10 Curriculum & Innovation Team provides curriculum support to schools within Centre, Clinton, and Clearfield counties. Teachers and administrators are assisted in assessing the instructional process by exploring the connection between classroom activities, their selected curriculum resources, and the PA Core standards. The team highlights how suggested lesson progressions integrate the big ideas/essential understandings of the standard(s) among other offerings. Our end goals are to help schools realize a closer look at their practices and suggest research-based professional learning pieces to help teachers effectively plan for instruction.



WORKSHOPS AND PROFESSIONAL LEARNING

Dawn Hayes, Ed.D.
dhayes@ciu10.org | 814-342-0884 ext. 3036

Fee for Service

Workshops and Professional Learning opportunities are available at various times throughout the year. Topics are varied to be relevant for paraprofessionals, teachers, administrators, and many others.

Opportunities are available to earn Act 48 and PIL hours in some instances, as well as professional development hours for the paraprofessional.

PRESCHOOL EARLY INTERVENTION PROGRAM

MESSAGE
FROM



FOR
MORE
INFO

**Roxann Emigh,
MS CCC-SLP/L**

**Director of
Preschool Early
Intervention
Services**

**remigh@
ciu10.org**

**814-422-4124
ext. 3024**

DIRECTOR OF PRESCHOOL EARLY INTERVENTION

The CIU Preschool Early Intervention Program is a year-round system that identifies and provides early intervention special education services to eligible, qualifying young children and families in Centre, Clearfield, and Clinton Counties.

Complimentary Early Intervention (EI) in Pennsylvania consists of services and supports designed to help families with children who have developmental delays or disabilities. Early Intervention builds upon the natural learning that occurs throughout a child's first few years and promotes collaboration among parents, service providers, and others significantly involved in a student's education.

PRESCHOOL EARLY INTERVENTION PROGRAM

PRESCHOOL EARLY INTERVENTION SERVICES

Roxann Emigh
remigh@ciu10.org
814-422-4124 ext. 3024

Complimentary

Early Intervention (EI) in Pennsylvania consists of services and supports designed to help families with children who have developmental delays or disabilities. Early Intervention builds upon the natural learning occurring in a child's first few years. It is a process that promotes collaboration among parents, service providers, and others significantly involved with your child.

LOCAL INTERAGENCY COORDINATING COUNCILS (LICC)

Preschool Early Intervention participates in each county Local Interagency Coordinating Council (LICC). LICC groups meet monthly during the school year to discuss local issues, receive updates from participating agencies, and plan local events for young children and their families.

PRESCHOOL EARLY INTERVENTION SERVICES MAY INCLUDE

- **Home-Based Teacher and/or Therapists**
Professional staff visit child at home to deliver IEP services
- **Itinerant Services at an Early Childhood Program**
Professional staff visit a preschool program, Head Start program, Pre-K Counts program, or child care facility to deliver IEP services to an enrolled child
- **Classroom-Based Services**
Early Childhood Special Education (ECSE) classes in each county for young children with significant needs
- **Transportation**
Transportation can be provided if necessary for the child to access their IEP services

TRANSITION TO KINDERGARTEN

Preschool Early Intervention staff supports children who are eligible to enroll in kindergarten. Family meetings are held with the district and information is shared among all parties.

- **Teacher of the Hearing Impaired Services**
Provided for children with identified hearing impairment
- **Teacher of the Visually Impaired Services**
Provided for children with identified visual impairment
- **Speech and Language Services**
This service is provided for children with communication needs
- **Occupational Therapy Educational Services**
This service is provided for children whose fine motor skills affect their educational performance
- **Physical Therapy Educational Services**
This service is provided for children whose gross motor skills affect their educational performance
- **Assistive Technology (AT) Services**
Provided for children who need AT devices for communication

NOTE:

To request a **FREE SCREENING** for your child ages 3 to 5 years old, please call 814-342-0884 Ext. 3060.

SPECIAL EDUCATION

MESSAGE FROM

The Special Education department of the CIU 10 offer a variety of individual-focused services for people with unique learning needs, and support research and development for those that work with people with special needs. The CIU provides Special Education products and services not only to public educational entities, but also non-public schools and community. This collaborative effort has allowed the CIU 10 to streamline support services directly to students, expand community reach, and support professional development needs for school-age students and educational personnel.

Explore the following pages to discover how the CIU 10 can serve you, perhaps in ways you have never imagined!

THE DIRECTOR

The CIU Special Education department offers a robust array of supportive services to improve the quality of life for any learner with unique experiences. A skilled team of professionals provides expertise to support the CIU's 12 public school districts, four charter schools, and numerous non-public schools, as well as education agencies, students, and families across Central Pennsylvania.



FOR
MORE
INFO

Erin Cernuska,
M.Ed.

Director of
Special
Education and
Non-Public
Student
Services

ecernuska@ciu
10.org

814-405-0063

ADAPTIVE PHYSICAL EDUCATION

Kaleena Selfridge, Ph.D.
ksselfridge@ciu10.org
814-422-4122

Fee for Service

Adaptive Physical Education (PE) classes support students of all ability levels. Activities include: bowling, hockey, basketball, yoga, and various social games. Health classes are also a part of our adaptive PE classes, emphasizing healthy eating, mental wellness, and play. Our Adaptive PE teacher provides assessments to local schools to help determine individual needs.

ASSISTIVE TECHNOLOGY

Stephanie King, MS CCC-SLP/L
sking@ciu10.org
814-422-4152

Complimentary

The CIU 10 provides training and consultation services for Assistive Technology (AT). AT in education is a tool or service that supports a student's access to the curriculum. AT tools range from no-tech to high-tech and include Augmentative and Alternative Communication, Academic and Learning Aids, Computer Access, Access Technology, and Access and Environmental Controls. In addition, AT consultants provide individual student consultations and various small- and large-scale professional development opportunities to support school districts. The CIU also has an AT Lending Library available for trialing tools during the consultation process.

AUDIOLOGY

Erin Cernuska, M.Ed. | ecernuska@ciu10.org | 814-405-0063
Brooke Walton, M.Ed. | bwalton@ciu10.org | 814-422-4107

Fee for Service

Through the CIU's Deaf and Hard of Hearing (DHOH) program, our educational audiologist provides support and recommendations to maximize the auditory access of DHOH learners and promotes communication access essential for classroom participation and learning. Audiology services include the assessment of auditory functioning; evaluations (including auditory processing disorder); selection, fitting, care, and maintenance of hearing assistive technology; training and consultation of regular and special educators regarding hearing loss and technology; and ongoing collaborations with Individualized Education Plan (IEP) team members, including the learner's clinical audiologist.

AUGMENTATIVE AND ALTERNATIVE COMMUNICATION (AAC)

Stephanie King, MS CCC-SLP/L | sking@ciu10.org | 814-422-4152

Complimentary

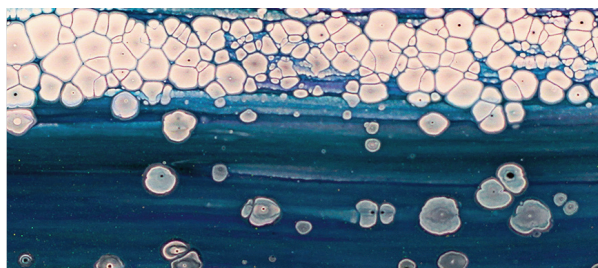
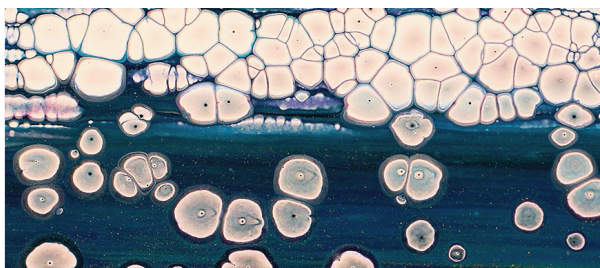
Augmentative and Alternative Communication (AAC) refers to any system, tool, or form of communication besides speech. Some individuals cannot effectively communicate and require AAC to supplement (augmentative) or replace (alternative) verbal speech. AAC is a subset of Assistive Technology (AT). The CIU 10 provides AAC support with training and consultation. In addition, individual student consultations offer specific suggestions for AAC tools to consider, implementation strategies, team support, training, and access to the AT Lending Library.

AUTISM CONSULTATION AND SUPPORT

Erin Cernuska, M.Ed. | ecernuska@ciu10.org | 814-405-0063

Complimentary

The Autism Consultants at CIU 10 provide training and consultation for working with students diagnosed with Autism. Services include: classroom and student observation, effective scheduling, classroom support roles, and evidence-based practices.



AUTISM DIAGNOSTIC OBSERVATION SCHEDULE (ADOS)

Erin Cernuska, M.Ed.
ecernuska@ciu10.org | 814-405-0063

Fee for Service

ADOS, an assessment tool designed with a series of semi-structured observations, including assessment of children's communication skills, social interaction, and imaginative use of materials in individuals who are suspected to have autism spectrum disorder

BCBA SUPPORT

Erin Cernuska, M.Ed.
ecernuska@ciu10.org | 814-405-0063

Fee for Service

BCBA Support actively participates in the development and implementation of programs, policies and practices relative to the management of students' problematic behaviors, including children with autistic spectrum disorder (ASD) and emotional disturbance (ED). The CIU provides training to staff on the implementation of appropriate instructional strategies, behavior management, behavior intervention plans, and 504 plans as appropriate.

BLIND/VISION SUPPORT PROGRAM

Erin Cernuska, M.Ed.
ecernuska@ciu10.org | 814-405-0063

Fee for Service

The CIU's Vision Support Team provides support and services to local districts for students whose vision adversely impacts their educational success. Specially designed instruction includes, but is not limited to, preparing braille and tactile materials, enlarged print, magnification devices, audiobooks, and Assistive Technology (AT). In addition to direct services provided by a Teacher of the Visually Impaired (TVI), the vision team offers AT evaluations/consultations, individualized instruction from the Expanded Core Curriculum and assist students with accessing the district's curriculum.

BRAINSTEPS CONSULTATION

Erin Cernuska, M.Ed.
ecernuska@ciu10.org | 814-405-0063

Complimentary

The CIU offers a Child & Adolescent Brain Injury School Re-entry Consultation and Training Program called BrainSTEPS (Strategies Teaching Educators, Parents, and Students). BrainSTEPS works to ensure that those who provide educational support to children with an acquired brain injury, including ongoing concussion symptoms, have a good understanding of brain injury, the resulting challenges, and supports and interventions that will help these students achieve educational success through graduation. BrainSTEPS consultation and training are available to any school district or nonpublic institution in Centre, Clinton, and Clearfield Counties.

CENTRE COUNTY DETENTION CENTER EDUCATION PROGRAMS

Kaleena Selfridge, Ph.D.
kselfridge@ciu10.org | 814-422-4145

Fee for Service

CIU10 provides regular and special education services to students in placement at the Centre County Youth Detention Center in Bellefonte. This education follows all laws and standards for K-12 education in Pennsylvania. All students are provided Free and Appropriate Public Education (FAPE) for the 180-day school year and can continue coursework towards graduation.

CENTRE AND CLEARFIELD COUNTY INCARCERATED YOUTH PROGRAMS

Kaleena Selfridge, Ph.D.
kselfridge@ciu10.org | 814-422-4122

Fee for Service

CIU10 provides regular and special education services to students in placement at the Centre and Clearfield County Prisons. This education follows all laws and standards for K-12 education in Pennsylvania. All students are provided Free and Appropriate Public Education (FAPE) for the 180-day school year and can continue coursework towards graduation.

CHECK & CONNECT

Christine Sanker, M.Ed.
csanker@ciu10.org | 814-342-0884 ext. 3032
Erin Cernuska, M.Ed.
ecernuska@ciu10.org | 814-405-0063

Complimentary

Check & Connect is a comprehensive intervention to engage students who are showing early warning signs of disengagement from school and learning or who are at risk of dropping out. This is typically a two-day training. Day one focuses on setting up an early warning system and program implementation, while day two consists of mentor training and relationships that are essential for student behavior change. Check & Connect is a relationship-based intervention.

CLEARFIELD APARTMENT PROJECT

Erin Chapman, M.Ed.
echapman@ciu10.org | (814) 422-4157

Erin Cernuska, M.Ed.
ecernuska@ciu10.org | 814-405-0063

Fee for Service

Access to a Clearfield County Apartment including kitchen, dining room area, living room, bedroom and bathroom. Space can be used to practice daily living and functional skills needed post secondary school.

COUNSELING SERVICES

Erin Cernuska, M.Ed.
ecernuska@ciu10.org | 814-405-0063

Fee for Service

Counseling Services occur within our nonpublic and public schools by request. Counselors and/or Case Managers collaborate with the student's family and provide educational and vocational counseling services to program participants.



DATA COLLECTION AND REPORTING SYSTEM FOR SPECIAL EDUCATION

Amber Brady
abrady@ciu10.org | 814-342-0884 ext. 3023

Complimentary

The CIU 10 collects regional special education data to meet state and federal reporting requirements. This data is maintained by each school district and charter school within Centre, Clearfield, and Clinton Counties. Data is collected by the CIU from the Local Education Agencies (LEAs) to complete all required reporting to the Pennsylvania Department of Education. In addition, the CIU provides support to LEAs to meet all state and federal reporting requirements.

DEAF/HARD OF HEARING (DHOH) SUPPORT PROGRAM

Erin Cernuska, M.Ed. | ecernuska@ciu10.org | 814-405-0063

Fee for Service

The Deaf/Hard of Hearing (DHOH) Support Program is part of CIU 10's itinerant teachers that provide support to local schools. The DHOH Support Program services learners ages 3-21, school staff, and families. In addition, DHOH teachers facilitate learning strategies for students throughout the county identified with hearing loss by collaborating with member school districts and educational programs.

DHOH professionals include Teachers of the Deaf/Hard of Hearing and an educational audiologist. These professionals strive to ensure all team members are familiar with hearing loss's educational and functional impact and the technology required to support the learner's ability to access communication.

ENHANCED CORE READING INSTRUCTION (ECRI)

Kaylyn Massafra, M.Ed
kmassafra@ciu10.org | 814-342-0084 ext. 3061

Jordan Yarwood
jarwood@ciu10.org | 814-342-0884 ext. 3045

Complimentary

Enhanced Core Reading Instruction (ECRI) is a multi-tiered program (Tier 1 and Tier 2) featuring a series of teaching routines designed to increase the efficiency and effectiveness of reading instruction in kindergarten, first and second grade. Six opportunities for learning and practice are provided .

Session A: Foundational Skills Training

This course will present information and research about evidence-based reading instruction, and describe and model how to use instructional routines to enhance the delivery of core reading instruction in a multi-tiered system of Tier 1 and Tier 2 support Systematic strategies and instructional routines

SPECIAL EDUCATION

designed to increase the efficiency and effectiveness of reading instruction in kindergarten, first and second grade will be described and practiced.

Session B: Foundational Skills Leadership Training

This course will present information and research about evidence-based reading instruction, and describe and model how to use instructional routines to enhance the delivery of core reading instruction in a multi-tiered system of support. This course will provide resources and guidance to build capacity to provide support for quality implementation of the Enhanced Core Reading Instruction (ECRI) foundational skills instruction.

Session C: Foundational Skills Coaching

This course will present information and research about evidence-based reading instruction, and describe and model how to use instructional routines to enhance the delivery of core reading instruction in a multi-tiered system of Tier 1 and Tier 2 support Systematic strategies and instructional routines designed to increase the efficiency and effectiveness of reading instruction in kindergarten, first and second grade will be described and practiced.



Session D: Vocabulary & Comprehension Training

This course will present information and research about evidence-based reading instruction, and describe and model how to use instructional routines to enhance the delivery of core reading instruction in the areas of vocabulary and comprehension. Systematic strategies and instructional routines designed to increase the efficiency and effectiveness of vocabulary and comprehension instruction in kindergarten, first and second grade will be described and practiced.

Session E: Vocabulary & Comprehension Leadership Training

This course will present information and research about evidence-based reading instruction, and describe and model how to use instructional routines to enhance

the delivery of core reading instruction in a multi-tiered system of Tier 1 and Tier 2 support Systematic strategies and instructional routines designed to increase the efficiency and effectiveness of reading instruction in kindergarten, first and second grade will be described and practiced

Session F: Vocabulary & Comprehension Coaching

This course will present information and research about evidence-based reading instruction, and describe and model how to use instructional routines to enhance the delivery of core reading instruction in a multi-tiered system of Tier 1 and Tier 2 support Systematic strategies and instructional routines designed to increase the efficiency and effectiveness of reading instruction in kindergarten, first and second grade will be described and practiced

SPECIAL EDUCATION

EQUITABLE PARTICIPATION (EP) CONSULTATION AND TRAINING

Erin Cernuska, M.Ed.
ecernuska@ciu10.org | 814-405-0063

Brooke Walton, M.Ed.
bwalton@ciu10.org | 814-422-4107

Complimentary

Through timely and meaningful consultation, the nonpublic school administrators of Centre, Clearfield, and Clinton Counties elect a consultative service model. A consultative model supports lending libraries, professional development, and staff consultations. Equitable Participation (EP) consultants provide teachers and administrators with technical assistance and professional development to enhance outcomes for children with disabilities. Services include but are not limited to, Assistive Technology (AT), Least Restrictive Environment/Inclusion, Secondary Transition Planning, Multi-tiered System of Support (MTSS): Literacy/Mathematics /Behavior, Youth Mental Health First Aid, Functional Behavior Assessments (FBAs), and Language Essentials for Teachers of Reading and Spelling (LETRS) training. Local nonpublic schools also have the ability to embrace a direct service model to students through a Special Education Teacher. These direct services are outlined through an Equitable Participation Service Plan for each student.

EXTENDED SCHOOL YEAR (ESY)

Erin Cernuska, M.Ed. | ecernuska@ciu10.org | 814-405-0063

Kaleena Selfridge, Ph.D.
kselfridge@ciu10.org | 814-422-4122

Fee for Service

CIU 10 offers Extended School Year (ESY) services to qualifying students, such as academic instruction and itinerant therapies. Services are delivered during the summer months to students ages 6-21. Individualized Education Plan (IEP) teams will determine specific individualized ESY service requirements.

FUNCTIONAL BEHAVIORAL ASSESSMENTS (FBA)

Erin Cernuska, M.Ed.
ecernuska@ciu10.org | 814-405-0063

Fee for Service

The Functional Behavioral Assessments (FBA) system is a process for identifying problem behaviors and developing interventions to improve or eliminate those behaviors. Certified consultants will observe student behaviors, antecedents, and consequences to collect data. A written report will summarize results and be shared with district staff and stakeholders.

GIFTED NETWORK

Erin Cernuska, M.Ed.
ecernuska@ciu10.org | 814-405-0063

Brooke Walton, M.Ed. | bwalton@ciu10.org | 814-422-4107

Complimentary

The CIU provides gifted education training and consultation, as well as opportunities for gifted education teachers and coordinators to participate in professional learning communities and professional

development. Through the Gifted Education Network, participants engage in training, consultation, collaboration, and discussion about current issues and trends in gifted education. Any school district or nonpublic institution in Centre, Clinton, or Clearfield county are invited to participate.

INCLUSIVE TECHNOLOGY ACADEMY

Stephanie King, M.S. CCC-SLP/L
sking@ciu10.org | 814-422-4152

Complimentary

The Assistive Technology (AT) initiatives from IU 10, IU 8, and IU 11 are excited to offer the “Inclusive Technology Academy” with Mike Marotta from Inclusive Technology Solutions, LLC to our district teams for the 23/24 school year. This year-long professional learning event is an interactive training program designed to build foundational competencies in the area of Assistive Technology. The goals of this academy include building local capacity in the understanding of Assistive Technology, Universal Design for Learning, and Accessible Educational Materials to improve learning outcomes for all students, including those with significant disabilities.

INDUCTION

Dawn Hayes, Ed.D.
dhayes@ciu10.org | 814-342-0884 ext. 3036

Fee for Service

The CIU 10 offers a PDE-approved induction program in order to qualify for an Instructional II certificate. Induction is meant to be a year-long activity in which mentees meet with their mentor at least 3 times throughout the year, attend monthly meetings via Zoom in different topic areas, and complete an asynchronous course. Upon completion of the course, participants will receive a letter of completion.

INTENSIVE INTERAGENCY COORDINATION

Erin Chapman, M.Ed.
echapman@ciu10.org | 814-422-4157

Complimentary

Intensive Interagency Coordination supports and assists students with disabilities whose school districts have determined that they cannot be appropriately educated in a public educational setting and who have waited more than 30 days for the provision of an appropriate educational placement. Intensive Interagency Coordination is designed for the rare situations when the local teams cannot arrange placements of students in the public educational setting

EDUCATIONAL INTERPRETERS

Erin Cernuska, M.Ed.
ecernuska@ciu10.org | 814-405-0063

Fee for Service

Educational Interpreters are certified professionals who provide sign language interpretation in order to allow students access to social and academic situations.



LANGUAGE ESSENTIALS FOR TEACHERS OF READING AND SPELLING (LETRS)

Stephanie King, MS CCC-SLP/L
sking@ciu10.org | 814-422-4152

Kaylyn Massafra, M.Ed.
kmassafra@ciu10.org | 814-342-0084 ext. 3061

Karen Woods
kwoods@ciu10.org | 814-342-0884 ext. 3037

Jordan Yarwood
jyarwood@ciu10.org | 814-342-0884 ext. 3045

Complimentary

Language Essentials for Teachers of Reading and Spelling (LETRS) is a professional development opportunity that empowers teachers to understand scientifically based reading instruction. The two-year program is offered in the formats of online webinars, face-to-face instruction and bridge to practice in the classroom activities for teachers to successfully integrate content learned. LETRS is critical for all students' success and enables teachers to gain a deep structural understanding of language and its connection to literacy. This course may be available for additional graduate credits.

LEAST RESTRICTIVE ENVIRONMENT (LRE)/ INCLUSIVE PRACTICES

Christine Sanker, M.Ed.
csanker@ciu10.org | 814-342-0884 ext. 3032

Kaleena Selfridge, Ph.D.
ksselfridge@ciu10.org | 814-422-4122

Complimentary

The Least Restrictive Environment (LRE) is identified in the Individuals with Disabilities Education Act (IDEA) as one of the principles governing students with disabilities and other special needs. By law, schools provide a free and appropriate public education (FAPE) in the least restrictive environment relevant to



individual students' needs. The CIU 10's Inclusive Practices/LRE Consultants provides training and consultation on effective strategies and techniques to promote and support inclusive practices, including the Framework for Access and Belonging (FAB) with Supplementary Aids and Services, Universal Design for Learning, compliance monitoring, procedural safeguards, co-teaching, and other related topics.

LOCAL TASK FORCE (LTF)

Erin Chapman, M.Ed.
echapman@ciu10.or | 814-422-4157

Complimentary

The Local Task Force (LTF) is a committee of concerned and active parents, consumers, schools, and representatives that work to ensure that all school-age children with disabilities in Centre, Clearfield, and Clinton Counties receive the support and services they need to succeed in the least restrictive environment. A significant purpose of the LTF is to propose recommendations that will improve, strengthen, and, when needed, expand services. The committee meets approximately every other month or more throughout the school year. Topics are relevant to supporting students with disabilities. Meetings are public and open to all.

SPECIAL EDUCATION

MULTI-TIERED SYSTEM OF SUPPORTS (MTSS)/ RESPONSE TO INTERVENTION (RTI)

Stephanie King, MS CCC-SLP/L
sking@ciu10.org | 814-422-4152

Kaylyn Massafra, M.Ed.
kmassafra@ciu10.org
814-342-0084 ext. 3061

Jordan Yarwood |
jyarwood@ciu10.org
814-342-0884 ext. 3045

Complimentary

Pennsylvania's Multi-Tiered System of Supports (MTSS) is a standards-aligned, comprehensive school improvement framework for enhancing academic, behavioral, and social-emotional outcomes for all students. Staff provides customized consultation to Local Education Agencies (LEAs) at all phases of the MTSS process, from establishing teams to using the Response to Intervention (RTI) / Specific Learning Disability (SLD) identification process as an alternative to an ability-achievement discrepancy. Areas of focus for RTI/SLD include reading, math, and writing.

MULTI-TIERED SYSTEM OF SUPPORTS FOR BEHAVIOR (MTSS) SCHOOL-WIDE/ POSITIVE BEHAVIOR INTERVENTIONS AND SUPPORTS (SWPBIS)

Christine Sanker, M.Ed. | csanker@ciu10.org
814-342-0884 ext. 3032

Jordan Yarwood | jyarwood@ciu10.org
814-342-0884 ext. 3045

Complimentary

School-Wide/Positive Behavior Interventions and Supports (SWPBIS) is a multi-tiered systems framework used to assist schools in aligning social, emotional, behavioral, and mental health supports necessary for establishing and enhancing effective learning environments. Training is provided to schools utilizing the Pennsylvania Positive Behavior Support (PAPBS) Network SWPBIS training framework. The framework supports exploring, installing, and implementing evidence-based, data-driven approaches to improving school climate and culture. Schools are supported through the facilitation of fidelity measures used to evaluate their processes and practices and inform continual progress and sustainability decisions.

NONPUBLIC SCHOOLS PROGRAM

Erin Cernuska, M.Ed.
ecernuska@ciu10.org | 814-405-0063

Brooke Walton, M.Ed.
bwalton@ciu10.org | 814-422-4107

Complimentary

Under Act 89 of Pennsylvania, the Nonpublic Schools Program (NPSP) provides auxiliary services, including school counseling, standardized testing, psychological services for exceptional children, remedial reading, remedial mathematics, speech-language support, services for English Learners, and other secular, neutral, non-ideological services of a supplementary and remedial nature. Act 89 is a state-funded service provided directly to the local Intermediate Unit to students enrolled in nonprofit private schools. CIU 10 leads this services program through meaningful and timely consultation with nonpublic school leaders. Services do not carry an individualized entitlement for students but, instead, are provided subject to limitations of state-appropriated funding.

OCCUPATIONAL THERAPY

Kaleena Selfridge, Ph.D.
kselfridge@ciu10.org | 814-422-4122

Fee for Service

CIU10 employs a team of Licensed Occupational Therapists and Certified Occupational Therapy Assistants that service students in the CIU10 footprint. Occupational Therapists can assist with evaluations, re-evaluations, IEP and classroom planning, and direct services for qualifying students and their support system.

SPECIAL EDUCATION

ORIENTATION AND MOBILITY (O&M)

Erin Cernuska, M.Ed.
ecernuska@ciu10.org
814-405-0063

Fee for Service

The Orientation and Mobility (O&M) service team teaches children, ages 3-21, with blindness or vision impairments critical concepts and skills to remain oriented within their environment. Mobility skills include cane techniques that enhance an individual's ability to independently navigate and travel safely under all environmental conditions and situations.

PARA-CONFERENCE

Kaleena Selfridge, Ph.D.
kselfridge@ciu10.org
814-422-4122

Fee for Services

The CIU 10 Para-Conference is an annual conference that offers professional development to paraeducators related to their specific position within a school district and provides an opportunity to network with peers from other districts in the region.

PARAEDUCATOR HIGHLY QUALIFIED

Christine Sanker, M.Ed.
csanker@ciu10.org | 814-342-0884 ext. 3032

Fee for Service

ParaEducator Highly Qualified is an online workshop consisting of seven online sessions. Participants will have three weeks (approximately 1 week for 2-3 topic areas) to complete the seven topic areas virtually prior to the review and testing. The topics areas will be presented in both an online learning platform and scheduled Zoom sessions. Sessions are a mix of self-paced online modules and scheduled virtual class time. Both the test review and exam will be administered via a virtual platform. Session topics are relevant to Special Education and Title 1 paraprofessionals. You will be considered Highly Qualified if a passing score is achieved.

Topics to be covered:

- Special Education 101 Overview
- Role of the Paraeducator
- Writing Skills for Paraprofessionals
- Essential Components of Reading Instruction
- Effective Instruction In Math
- Classroom Behavior Management
- Assistive Technology

PERSONAL CARE ASSISTANT

Erin Cernuska, M.Ed. | ecernuska@ciu10.org | 814-405-0063

Fee for Service

Students who require assistance with mobility, feeding, toileting, maintaining attention to task, or other needs may qualify for the services of a part-time or full-time Personal Care Assistant (PCA). The PCA carries out specific duties outlined in the Individualized Education Plan (IEP) to facilitate students' access across school environments throughout the school day.

PHYSICAL THERAPY

Kaleena Selfridge, Ph.D.
kselfridge@ciu10.org
814-422-4122

Fee for Service

Licensed Physical Therapists are available to assist with evaluations, re-evaluations, and may be able to provide consultative and direct services to qualifying students and their support systems. For a student to qualify for Physical Therapy (PT) in the school setting, a Physical Therapist will determine if there are school-specific PT needs, along with a documented medical need.

PRE-K COUNTS EVALUATIONS

Erin Cernuska, M.Ed.
ecernuska@ciu10.org
814-405-0063

Fee for Service

Pre-K Counts Evaluations are for Non-Tenured teachers looking to move from their Level I to Level II certification. Supervisors will conduct a pre-observation, observation of teaching, and post-observation per the Danielson framework model. In addition, paperwork can be completed to convert teachers from Instructional I to Instructional II once the teacher has completed all requirements, including six formal observations.

PSYCHOLOGICAL SERVICES

Erin Cernuska, M.Ed.
ecernuska@ciu10.org | 814-405-0063

Fee for Service

Psychological services are provided for any district needing psychological evaluations and report writing assistance. In addition, school psychologists assist in developing individual programs and supportive help for exceptional children, their parents, their teachers and other school personnel. In addition, school psychologists provide insight for administrative and teaching personnel concerning the effectiveness of the school and how it relates to non-exceptional children.

PULSE: PRINCIPALS UNDERSTANDING HOW TO LEAD SPECIAL EDUCATION

Erin Cernuska, M.Ed.
ecernuska@ciu10.org
814-405-0063

Dawn Hayes, Ed.D.
dhayes@ciu10.org
814-342-0884 ext. 3036

Complimentary

This 30-hour course aims to build upon principals' working knowledge and skill sets to successfully innovate and program for students with disabilities. The growing field of research at the intersection of principals and special education yields evidence-based practices that support outcomes for students with disabilities.





The three professional development days (followed by a half-day of project presentations) are titled as follows:

Day 1: Leading a Culture of Equity, Inclusion and Belonging

Day 2: Being an Instructional Leader

Day 3: Supporting Effective Behavioral Systems

Intended Audience:

Principals, Curriculum Directors, Superintendents

Please note: Each instructional day requires the completion of preceding activities/readings.

QUALITY INDICATORS OF EMOTIONAL SUPPORT SERVICES AND PROGRAMS (QIESSP)

Christine Sanker, M.Ed.
csanker@ciu10.org | 814-342-0884 ext. 3032

Complimentary

The Quality Indicators of Emotional Support Services and Programs (QIESSP) enables local educational agencies (LEAs) to examine the programs and services offered to students with emotional support needs. Using the QIESSP self-assessment tool, a district can reflect on their current systems and practices then develop action steps for improvement.

RENEW

Erin Chapman, M.Ed.
echapman@ciu10.org | 814-422-4157

Fee for Service

RENEW (Rehabilitation for Empowerment, Natural Supports, Education and Work) is a secondary transition intervention developed by the University of New Hampshire Institute on Disability. RENEW supports adolescents with emotional and behavioral challenges.

RESTORATIVE PRACTICES

RESTORATIVE PRACTICES TRAINERS,
INTERNATIONAL INSTITUTE OF RESTORATIVE PRACTICES (IIRP)

Christine Sanker, M.Ed.
csanker@ciu10.org | 814-342-0884 ext. 3032

Fee for Service

Restorative practices is an emerging social science that studies how to strengthen relationships between individuals, as well as within communities. The purpose of Restorative practices is to prevent conflict and wrongdoing and respond to wrongdoing after it occurs. The CIU 10 offers an introductory course to this social science.

RESTORATIVE PRACTICES JUSTICE CONFERCING

Christine Sanker, M.Ed.
csanker@ciu10.org | 814-342-0884 ext. 3032

Fee for Service

Restorative Justice Conferencing covers the fundamentals of facilitating a formal conference in response to an incident of wrongdoing or harm. You will then be able to utilize those skills to create deeper interpersonal understanding and repair relationships among those involved or affected by such an incident.

SPECIAL EDUCATION

SAFETY CARE® TRAINING

Erin Cernuska, M.Ed.
ecernuska@ciu10.org | 814-405-0063

Erin Chapman, M.Ed.
echapman@ciu10.org | 814-422-4157

Fee for Service

Safety Care® Crisis Prevention Training provides necessary skills to effectively prevent, minimize, and manage behavioral challenges with dignity, safety, and the possibility of change. Safety Care® delivers the tools you need to be safe when working with behaviorally challenging individuals. These strategies are appropriate for all individuals as well as those who have experienced psychological or sexual trauma. Safety Care® promotes a reinforcement-based approach to developing new skills, maintaining safety, and reducing or eliminating restrictive interventions such as restraint.

SCHOOL-BASED ACCESS PROGRAM (SBAP)

Erin Cernuska, M.Ed.
ecernuska@ciu10.org | 814-405-0063

Abby Danko
adanko@ciu10.org | 814-342-0884 ext. 3040

Fee for Service

The School-Based ACCESS Program (SBAP) allows Pennsylvania's Local Education Agencies (LEAs) to receive federal Medicaid reimbursement for providing Individualized Education Plan (IEP) health-related services to Medical Assistance-eligible children as part of their IEP. Critical components of SBAP payment include Direct Services and Special Transportation Claiming, Medicaid Administrative, Claiming (MAC), Random Moment Time Study (RMTS), and Annual Cost Reconciliation and Settlement.

SECONDARY TRANSITION SERVICES

Erin Chapman, M.Ed.
echapman@ciu10.org | 814-442-4157

Kaleena Selfridge, Ph.D.
kselfridge@ciu10.org | 814-422-4122

Complimentary

CIU10 provides multiple services to aid in the transition planning process including consultation and support for educators via individualized training. Transition planning encompasses the development of post-secondary outcomes in post-secondary education, employment, and independent living. These are developed by completing various assessments, courses, and activities. CIU10 can help clarify the transition assessment process, assist with improving transition goals for IEPs, transition curriculum, community agency connections, and more.

SOCIAL WORK SERVICES

Erin Cernuska, M.Ed.
ecernuska@ciu10.org
814-405-0063

Fee for Service

CIU 10's social workers provide services to students to support their emotional well-being and improve their academic performance. Social workers help students cope with



SPECIAL EDUCATION

personal and psychological issues that affect their school performance, attendance, behavior, and socialization. They participate in the identification and intervention of pre-school through secondary age students whose capacity to learn or to have a positive educational experience is significantly hindered by the presence of emotional and behavioral problems requiring multidisciplinary interventions. Social work services include working with the student and/or family in collaborative consultation with all school agency personnel to be directed toward the access of and benefit from the student's educational program.

SPECIAL EDUCATION SUPERVISION

Erin Cernuska, M.Ed. |
ecernuska@ciu10.org
814-405-0063

Brooke Walton, M.Ed. |
bwalton@ciu10.org
814-422-4107

Fee for Service

Special Education Supervision support is available for local school districts and charter schools. This service includes development of procedures and policies, evaluation of programming, cyclical monitoring, support of improvement plans, and other Special Education Supports as requested.

SPEECH AND LANGUAGE PROFESSIONAL DEVELOPMENT

Roxann Emigh, MS CCC-SLP/L
remigh@ciu10.org | 814-342-0884 ext. 3024

Stephanie King, MS CCC-SLP/L
sking@ciu10.org | 814-422-4152

Complimentary

CIU 10 provides Speech and Language Therapists with professional development opportunities throughout the school year, including instructional courses and/or networking opportunities. During these events, CIU 10 leads the sharing of best practices, discussions on assessment and intervention and related information.

SPEECH/ LANGUAGE THERAPY SERVICES

Roxann Emigh, MS CCC-SLP/L
remigh@ciu10.org | 814-342-0884 ext. 3024

Brooke Walton, M.Ed. | bwalton@ciu10.org | 814-422-4107

Fee for Service

The CIU 10 Speech and Language Program supports communication needs by providing services to students ages 3- 21 and therapeutic support to school staff and families. The Speech-Language Pathologist may plan, implement, consult, assess, and treat students with a wide variety of communication concerns. Areas of communication include speech (articulation, voice, resonance, fluency), language (receptive, expressive, pragmatic), cognition, augmentative/alternative communication (low-, mid-, high-tech Augmentative and Alternative Communication), and swallowing. Speech and language services occur in individual, group, or classroom-based settings.

SUPERVISION OF CLINICAL FELLOWSHIP YEAR (CFY)

Roxann Emigh, MS CCC-SLP/L
remigh@ciu10.org
814-342-0884 ext. 3024

Stephanie King, MS CCC-SLP/L
sking@ciu10.org
814-422-4152

Fee for Service

CIU 10 provides recent speech-language pathology graduates the opportunity to complete supervision requirements for the clinical fellowship year with schools located in Center, Clearfield and Clinton County. The clinical fellowship year is structured to provide guidance and support to recent graduates becoming independent service providers. The supervision of the clinical fellowship year includes evaluating the recent graduate's strengths/weaknesses, identifying the graduate's limitations, fostering skills for independence, and providing professional development opportunities. Clinical fellowship supervision complies with the expectations and regulations established by the American Speech-Language-Hearing Association (ASHA) and Pennsylvania's State Board of Examiners in Speech Language Pathology.

TELEPRESENCE ROBOTS LENDING LIBRARY

Stephanie King, MS CCC-SLP/L
sking@ciu10.org | 814-422-4152

Complimentary

The Telepresence Program benefits students receiving homebound instruction from public or nonpublic schools within the CIU 10 footprint. This program benefits students who are unable to attend school for an extended period of time as the result of a serious medical condition, including injuries from an accident, recovery from a medical procedure, serious illness or chronic illness; and satisfies the conditions for receipt of homebound instruction. The program provides access to current telepresence technology, enabling students to continue to receive rigorous academic instruction and social interaction while supporting technical needs and professional development for district teams.

TRAUMA SKILLS TRAINING

Erin Cernuska, M.Ed.
ecernuska@ciu10.org | 814-405-0063

Complimentary

Trauma Skills Training will enhance school culture and climate to ultimately create a safer school environment for all students and staff within the district. Prepare to lead through the Trauma-Skilled Schools Model process and support the success of all students, including those who are adversely affected by chronic stress and trauma.



NON-PUBLIC STUDENT SERVICES

FOR
MORE
INFO

Erin Cernuska,
M.Ed.
Director of
Special
Education and
Non-Public
Student
Services

ecernuska@
ciu10.org

814-405-0063

Brooke Walton,
M.Ed.

Principal of
Student
Services/
Supervisor of
Special
Education

bwalton@
ciu10.org

814-422-4107



COUNSELING SERVICES

Erin Cernuska, M.Ed.
ecernuska@ciu10.org
814-405-0063

Fee for Service

Counseling Services occur within our nonpublic and public schools by request. Counselors and/or Case Managers collaborate with the student's family and provide educational and vocational counseling services to program participants.

Under Act 89 of Pennsylvania, the Nonpublic Schools Program (NPSP) provides auxiliary services, including school counseling, standardized testing, psychological services for exceptional children, remedial reading, remedial mathematics, speech-language support, and other secular, neutral, non-ideological services of a supplementary and remedial nature. Act 89 is a state-funded service provided directly to the local Intermediate Unit to students enrolled in nonprofit private schools. CIU 10 leads this services program through meaningful and timely consultation with nonpublic school leaders. Services do not carry an individualized entitlement for students but, instead, are provided subject to limitations of state- appropriated funding.

DEAF/HARD OF HEARING (DHOH) SUPPORT PROGRAM

Erin Cernuska, M.Ed.
ecernuska@ciu10.org
814-405-0063

Fee for Service

The Deaf/Hard of Hearing (DHOH) Support Program is part of CIU 10's itinerant teachers that provide support to local schools. The DHOH Support Program services learners ages 3-21,

school staff, and families. In addition, DHOH teachers facilitate learning strategies for students throughout the county identified with hearing loss by collaborating with member school districts and educational programs.

DHOH professionals include Teachers of the Deaf/Hard of Hearing and an educational audiologist. These professionals strive to ensure all team members are familiar with hearing loss's educational and functional impact and the technology required to support the learner's ability to access communication.

ENRICHMENT

Brooke Walton, M.Ed. | bwalton@ciu10.org | 814-422-4107

Complimentary

Our Enrichment Service Program is designed to support the academic strengths of students enrolled in non-public schools by providing opportunities for students to discover and explore new areas of interest, engaging students with experiences and strategies that promote increased creativity and problem solving abilities, identifying students demonstrating exceptional ability in one or more areas and provide them with a range of enriching experiences beyond the classroom, supporting periodic opportunities to learn with like-minded peers, and encouraging social and emotional affirmation and support.

EQUITABLE PARTICIPATION (EP) CONSULTATION AND TRAINING

Erin Cernuska, M.Ed. | ecernuska@ciu10.org | 814-405-0063

Brooke Walton, M.Ed. | bwalton@ciu10.org | 814-422-4107

Complimentary

Through timely and meaningful consultation, the nonpublic school administrators of Centre, Clearfield, and Clinton Counties elect a consultative service model. A consultative model supports lending libraries, professional development, and staff consultations. Equitable Participation (EP) consultants provide teachers and administrators with technical assistance and professional development to enhance outcomes for children with disabilities. Services include but are not limited to, Assistive Technology (AT), Least Restrictive Environment/Inclusion, Secondary Transition Planning, Multi-tiered System of Support (MTSS):

Literacy/Mathematics /Behavior, Youth Mental Health First Aid, Functional Behavior Assessments (FBAs), and Language Essentials for Teachers of Reading and Spelling (LETRS) training. Local nonpublic schools also have the ability to embrace a direct service model to students through a Special Education Teacher. These direct services are outlined through an Equitable Participation Service Plan for each student.

OCCUPATIONAL THERAPY

Kaleena Selfridge, Ph.D.
kselfridge@ciu10.org
814-422-4122

Fee for Service

CIU10 employs a team of Licensed Occupational Therapists and Certified Occupational Therapy Assistants that service students in the CIU10 footprint. Occupational Therapists can assist with evaluations, re-evaluations, IEP and classroom planning, and direct services for qualifying students and their support system.

PSYCHOLOGICAL SERVICES

Erin Cernuska, M.Ed.
ecernuska@ciu10.org
814-405-0063

Fee for Service

Psychological services are provided for any district needing psychological evaluations and report writing assistance. In addition, school psychologists assist in developing individual programs and supportive help for exceptional children, their parents, their teachers and other school personnel. In addition, school psychologists provide insight for administrative and teaching personnel concerning the effectiveness of the school and how it relates to non-exceptional children.



REMEDIAL READING/MATH

Brooke Walton, M.Ed.
bwalton@ciu10.org | 814-422-4107

Complimentary

Remedial specialists employed by CIU 10 provide instruction in basic reading and/or math skills to students in non-public schools through a comprehensive program of referral, assessment, intervention, and instruction. Individualized instructional goals and objectives are designed to promote student success and progress. The remedial specialist continuously monitors student progress. Student progress in their regular class is carefully monitored by the remedial specialist and classroom teachers to assure success.

SOCIAL WORK SERVICES

Erin Cernuska, M.Ed.
ecernuska@ciu10.org | 814-405-0063

Fee for Service

CIU 10's social workers provide services to students to support their emotional well-being and improve their academic performance. Social workers help students cope with personal and psychological issues that affect their school performance, attendance, behavior, and socialization. They participate in the identification and intervention of pre-school through secondary age students whose capacity to learn or to have a positive educational experience is significantly hindered by the presence of emotional and behavioral problems requiring multidisciplinary interventions. Social work services include working with the student and/or family in collaborative consultation with all school agency personnel to be directed toward the access of and benefit from the student's educational program.

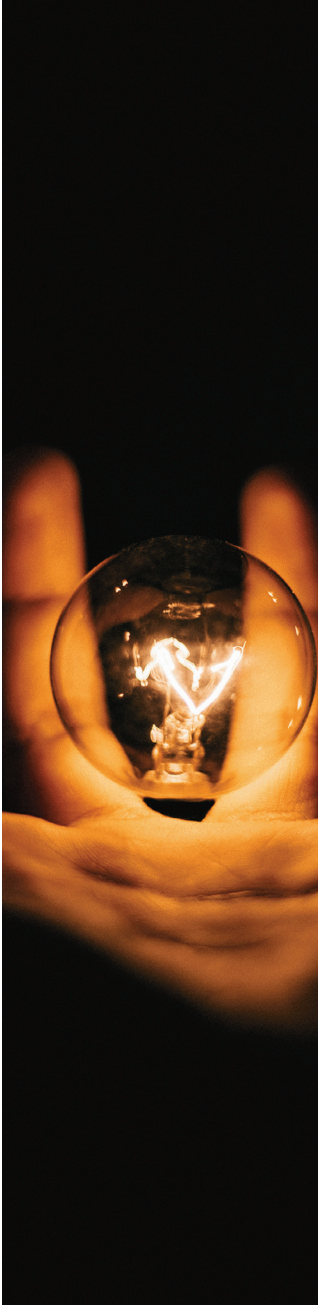
SPEECH/ LANGUAGE THERAPY SERVICES

Brooke Walton, M.Ed.
bwalton@ciu10.org | 814-422-4107

Fee for Service

The CIU 10 Act 89 Speech and Language service supports communication needs by providing services to students grades K-12 and therapeutic support to school staff and families. The Speech-Language Pathologist may plan, implement, consult, assess, and treat students with a wide variety of communication concerns. Areas of communication include speech (articulation, voice, resonance, fluency), language (receptive, expressive, pragmatic), cognition, augmentative/alternative communication (low-, mid-, high-tech Augmentative and Alternative Communication), and swallowing. Speech and language services occur in individual, group, or classroom-based settings.





STANDARDIZED TESTING AND SCORING

Brooke Walton, M.Ed.
bwalton@ciu10.org | 814-422-4107

Complimentary

This service is in place to provide comprehensive achievement/ability-based testing and reporting services to assist the nonpublic schools with the maintaining and reporting of student growth and curriculum planning. Act 89 administrators work with the nonpublic school administrators to purchase testing and scoring services in accordance with the needs for students in grades Kindergarten through twelve.

VISION SUPPORT PROGRAM

Erin Cernuska, M.Ed.
ecernuska@ciu10.org | 814-405-0063

Complimentary

The CIU's Vision Support Team provides support and services to non-public schools for students whose vision adversely impacts their educational success. Specially designed instruction includes, but is not limited to, preparing braille and tactile materials, enlarged print, magnification devices, audiobooks, and Assistive Technology (AT). In addition to direct services provided by a Teacher of the Visually Impaired (TVI), the vision team offers AT evaluations/consultations, individualized instruction from the Expanded Core Curriculum and assists students with accessing the district's curriculum.

NON-PUBLIC STUDENT SERVICES

ADULT EDUCATION

CIU's Adult Education Department offers free adult basic education and career readiness services in Centre, Clearfield, and Clinton Counties. The program offers a variety of instructional models including face-to-face and remote real-time classes, as well as classes at the county correctional facilities. Classes are designed to help learners improve their reading, writing, and math skills to prepare them for the Commonwealth Secondary School Diploma, also referred to as GED® and HiSET® exams. Students who already possess a GED® or diploma can attend classes for personal development or to prepare for post-secondary entrance exams and employment.

MESSAGE FROM DIRECTOR

The Adult Education Department is grant funded by the Department of Education, Division of Adult Education. Federal and state grant funds provide CIU 10 the opportunity to serve the adults in our local communities, including the county correctional facilities, free of charge. Adult learners are provided with small group instruction, technology, course materials, and all supplies needed in order to feel confident in meeting their next education goal. Whether a learner needs their Commonwealth Secondary School Diploma or would like to attend classes to brush up on basic skills, our instructors are equipped to help learners succeed.

BUSINESS SERVICES TEAM

Jenna Witherite
jwitherite@ciu10.org | 814-342-0884 ext. 3056

Complimentary

The Business Services Team is a group of volunteers from partnering agencies who discuss strategies regarding how various partners of the PA CareerLink® system can work together to best serve our regional employers. The committee is required to meet monthly to review labor market information, discuss business needs in the area, plan hiring events, and collaborate to meet the needs of employers. The Director of Adult Education is a part of this team.

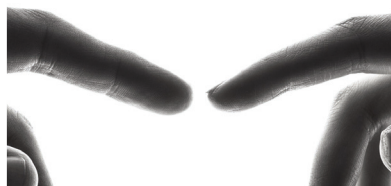
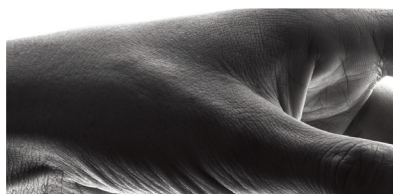


FOR
MORE
INFO

**Jenna
Witherite**
Director of
Adult Education
and Project
Development

jwitherite
@ciu10.org |
814-342-0884
ext. 3056

ADULT EDUCATION



CENTRAL PENNSYLVANIA WORKFORCE DEVELOPMENT BOARD

Jenna Witherite
jwitheriter@ciu10.org
814-342-0884 ext. 3056

Complimentary

Workforce Development Board (WDB) members represent the private sector, organized labor, educational institutions, government agencies, economic development, community organizations, and organizations that offer services through the PA CareerLink®.

WDB leaders are appointed by the Local Elected Official (LEO) Board to offer their insight and assist in creating a strong workforce. The strength of the Central Pennsylvania WDB is its ability to transform innovative and creative ideas into workforce solutions that support economic growth. The Director of Adult Education is a part of this team.

CLEARFIELD COUNTY CAREER AND TECHNOLOGY CENTER LOCAL ADVISORY BOARD

Jenna Witherite
jwitheriter@ciu10.org
814-342-0884 ext. 3056

Complimentary

Required by the Department of Education, the Clearfield County Career and Technology Center Local Advisory Board Committee is intended to strengthen the career and technical education program of a school or college. Local advisory committees are a vital link between the career and technical education program and business and industry. The committee provides valuable advice to the program while helping to plan, support, and promote the program in the community. The Director of Adult Education is a part of this team.

NORTH CENTRAL OPERATOR CONSORTIUM

Jenna Witherite
jwitheriter@ciu10.org
814-342-0884 ext. 3056

Complimentary

The North Central Operator Consortium coordinates the delivery of partner program services in the local service delivery system. The Operator Consortium ensures a seamless distribution of career services, training services, and other employment-related services provided by required and additional partner programs offered in the local area. To help ensure the coordination of program services, the operator is charged with the functional supervision of one-stop service locations, also known as PA CareerLink®. The Director of Adult Education is a part of this team.

The Pennsylvania Department of Education (PDE) does not discriminate in its educational programs, activities, or employment practices based on race, color, national origin, sex, sexual orientation, disability, age, religion, ancestry, union membership, or any other legally protected category.

SPECIAL PROJECTS

FOR MORE INFO

Francine Endler, Ed.D.
Executive Director, CIU

fendler@ciu10.org
814-342-0884 ext. 3031

Jenna Witherite
Director of Adult Education and Project Development

jwitherite@ciu10.org
814-342-0884 ext. 3056



CENTRAL INTERMEDIATE ONLINE LEARNING ASSOCIATION - CIOLA

Jenna Witherite | jwitherite@ciu10.org
814-342-0884 ext. 3056

Fee for Service

The Central Intermediate Online Learning Association (CIOLA) provides students with engaging, high-quality curriculum. The courses are customized to fit students' needs, while teaching valuable technology skills that are essential for success in the 21st century.

OPTIONS FOR EVERY LEARNER

The goal of CIOLA is to increase the options available to students. The administrative support of the Central Intermediate Unit 10 (CIU) and the quality, flexible nature, and diversity of available courses allows schools to offer programs that meet an extraordinary variety of student needs, including:

- Full-time online learning and single course options
- On-site or remote classes
- Unique STEM and foreign language courses
- Credit recovery, summer school, and advanced placement
- Option for half-day vocational or technical school students
- Choice for students with disabilities who can be served in an online environment
- Flexible schedules for students with jobs, family obligations, or children
- Instruction for students with health issues, etc. who may be missing significant class time

BENEFITS OF CIOLA

Retain and attract students – Offering expanded course selections, online learning opportunities, and a highly competitive full-time virtual school option is a cost-effective way to retain and even bring back students who might leave to attend other private or public schools.

Flexible learning options

CIOLA programs can adapt to fit individual student needs. Students can learn at the right pace for them, at the time and place they choose.

Highly engaging curriculum

CIOLA uses state-of-the-art curriculum designed to be engaging and fun while targeting multiple learning styles.

Provide rich opportunities

Choose from a wide variety of courses and electives designed to allow students to pursue their academic interests and develop a path for success after high school.

EVERYTHING DISC® WORKPLACE TRAININGS

Jenna Witherite | jwitherite@ciu10.org
814-342-0884 ext. 3056

Fee for Service

Everything DiSC® Workplace Trainings are half-day sessions in which participants learn to understand and appreciate the work styles of their colleagues. The result is more effective and productive working relationships. Participants receive a personalized assessment of their own DiSC® style. The assessments help to remove perceptual filters so each team member can see themselves more clearly. By understanding each of the four styles in the DiSC® model and by identifying individual styles, as well as colleague styles, the ability to avoid and move beyond personality clashes or misunderstandings is greatly enhanced.

Through the use of interactive exercises and video modules, participants learn about themselves and how they may tend to interact with others. A culminating activity includes learning how to identify different styles and strategies for adapting one's behavior to communicate with others more effectively.

The Everything DiSC® Workplace Profile can be used with anyone in an organization, regardless of title or role, to improve the quality of the workplace. DiSC® is most effective when it is introduced transparently throughout an organization with employees at different levels. A personal My Everything DiSC® Portal provides easy access for participants to generate Comparison Reports with their colleagues who also participate in a workshop. A Group Culture report is available to emphasize the value all styles bring to the workplace and to assist the group leader in gaining a deeper understanding of the role behavioral style plays in organizational culture.

REGION 7 SAFE SCHOOLS CONFERENCE

Francine Endler, Ed.D.
fendler@ciu10.org | 814-342-0884 ext. 3031

Complimentary

The Central Intermediate Unit 10 (CIU), in collaboration with Appalachia IU 8 and Tuscarora IU 11, sponsor an annual safe schools conference. Each year, the regional team identifies a topic relevant to safe schools, and provides the opportunity for educators from across Region 7 to attend.

SAFE SCHOOLS TRAINING

Francine Endler, Ed.D.
fendler@ciu10.org | 814-342-0884 ext. 3031

Fee for Service or Complimentary

In collaboration with educational partners, the CIU 10 develops and/or offers relevant safe schools training on a variety of topics.

SAFE SCHOOLS NETWORKING

Francine Endler, Ed.D.
fendler@ciu10.org | 814-342-0884 ext. 3031

Complimentary

The Central Intermediate Unit 10 (CIU) provides opportunities throughout the school year to member districts, charter schools, and non-public schools for networking opportunities surrounding safe schools topics. The CIU 10 also participates in state-wide safe schools meetings and shares information with stakeholders.

SPECIAL PROJECTS

PROGRAM CONTACT NAMES

Lance Bunnell	lbunnell@ciu10.org	Director of Information Technology	814-342-0884 ext. 3051
Laurie Castagnolo	lcastagnolo@ciu10.org	Human Resources Manager	814-342-0884 ext. 3043
Erin Cernuska, M.Ed.	ecernuska@ciu10.org	Director of Special Education and Non-Public Student Service	814-405-0063
Erin Chapman	echapman@ciu10.org	Educational Consultant	814-342-0884 ext. 3057
Melissa Duckworth, MS	mduckworth@ciu10.org	Educational Consultant	814-342-0884 ext. 3054
Francine Endler, Ed.D.	fendler@ciu10.org	Executive Director	814-342-0884 ext. 3031
Dawn Hayes, Ed.D.	dhayes@ciu10.org	Director of Curriculum and Innovation	814-342-0884 ext. 3036
Stephanie King, MS CCC-SLP/L	sking@ciu10.org	Educational Consultant	814-422-4152
Roxann Emigh, MS CCC-SLP/L	remigh@ciu10.org	Director of Preschool Early Intervention Services	814-422-4124 ext. 3024
Kaylyn Massafra	kmassafra@ciu10.org	Educational Consultant	814-342-0884 ext. 3061
Jonathan Rice, CPA	jrice@ciu10.org	Director of Business Services	814-342-0884 ext. 3046
Patti Ryver	pryver@ciu10.org	Assistant Business Manager	814-342-0884 ext. 3048
Christine Sanker, M.Ed.	csanker@ciu10.org	Educational Consultant	814-342-0884 ext. 3032
Kaleena Selfridge, Ph.D.	kselfridge@ciu10.org	Principal of Student Services/ Supervisor of Special Education	814-422-4122
Brooke Walton	bwalton@ciu10.org	Principal of Student Services/ Supervisor of Special Education	814-342-0884 ext. 3062
Jenna Witherite	jwitherite@ciu10.org	Director of Adult Education and Project Development	814-342-0884 ext. 3056
Karen Woods	kwoods@ciu10.org	Educational Consultant	814-342-0884 ext. 3037
Jordan Yarwood	jyarwood@ciu10.org	Educational Consultant	814-342-0884 ext. 3045

CENTRAL INTERMEDIATE UNIT 10

MENU OF SERVICES



CENTRAL INTERMEDIATE UNIT 10

2024-2025

CENTRAL INTERMEDIATE UNIT

200 Shady Lane | Suite 100 | Philipsburg, PA 16866 | 814-342-0884 | info@ciu10.org
