



A PARENT'S GUIDE TO

# Title I, Part A

## WHAT IS TITLE I, PART A

### What is Title I, Part A?

Title I, Part A is a federal program designed to improve students' academic achievement. Money granted is used for a variety of services which may include additional teachers and support staff, extra time for instruction, instructional materials and learning experiences, and additional training for staff.

### How are schools identified?

Schools qualify for funds based on economic need.

### Which students receive the benefits?

Wylie ISD utilizes a schoolwide program, which allows all children on the identified campuses to receive the benefits of Title I.

### Which campuses are Title I?

The needs are assessed each year. Currently, the following campuses receive additional support:

- Birmingham Elementary
- Cox Elementary
- Dodd Elementary
- Groves Elementary
- Hartman Elementary



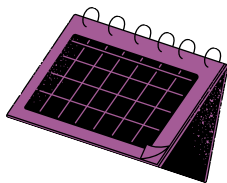
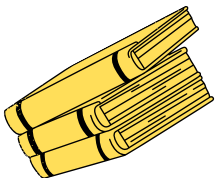
The research is clear and consistent.

Parent, family, and community involvement in education correlates with higher academic performance and school improvement.



# Title I, Part A Goals

- Increase academic achievement
- Provide direct instructional support to students
- Provide professional development to teachers
- Promote parent education and involvement



## How Can I support my child?

**Parent involvement is essential to each child's academic success! There are many ways for you to be actively involved in your child's education.**

### **Communicate**

**Stay informed and respond promptly to all communication from the school or district.**

### **Be an example**

**Show your child that education is important by reading, attending conferences, and attending school events.**

### **Volunteer**

**Volunteer at your child's school and help with extra-curricular activities. Participate and support parent involvement activities at school.**

### **Learn**

**Find ways to help your child with classwork, homework, and future education plans.**

### **Get involved**

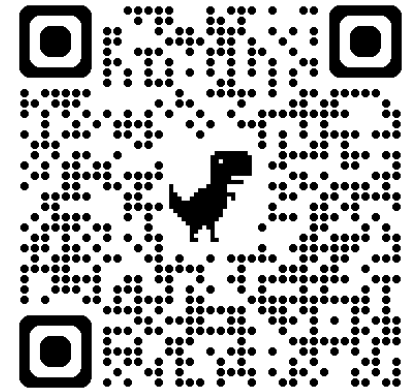
**Join school/parent organizations, school improvement teams, parent advisory councils, and other parent committees.**

**Collaborate with the community Participate in parent activities with other families.**

**Know and use the local community resources (e.g. public library, community center) to increase skills and talent.**



Scan the QR code below for the Parent and Family Connection Newsletter



For additional questions or program feedback contact

Jill Vasquez

Director of Special Services

972.429.2385

[jill.vasquez@wylieisd.net](mailto:jill.vasquez@wylieisd.net)