

# PLEASE KEEP ILL STUDENTS OUT OF SCHOOL

The list below gives school instructions not medical advice.  
Please contact your health care provider with health concerns.



## SYMPTOMS OF ILLNESS



## THE STUDENT MAY RETURN AFTER...

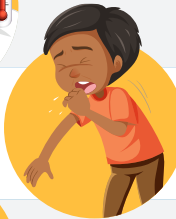
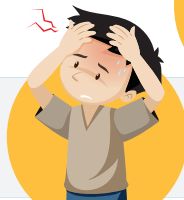
(The list below indicates the shortest time to stay home.  
A student may need to stay home longer for some illnesses.)

**Fever:** temperature of 100.4°F or greater



**Fever-free for 24 hours** without taking fever-reducing medicine.

New **cough** illness **OR** new **difficulty breathing**



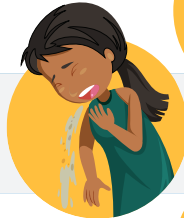
**Symptoms improving for 24 hours** (no cough or cough is well controlled and breathing comfortably). Urgent medical care may be needed.

**Headache** with stiff neck or with fever



**Symptom-free** **OR** with orders from doctor to school nurse. Follow fever instructions if fever is present. Urgent medical care may be needed.

**Diarrhea:** 3 loose or watery stools in a day or unable to control bowel movements



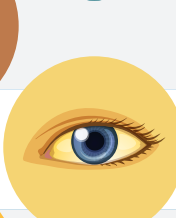
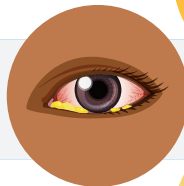
**Symptom-free for 24 hours** **OR** with orders from doctor to school nurse.

**Vomiting:** one or more episodes that are unexplained



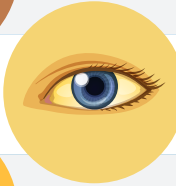
**Symptom-free for 24 hours** **OR** with orders from doctor to school nurse.

**Skin rash** or **open sores**



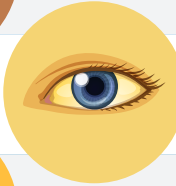
**Symptom-free**, which means rash is gone or sores are dry or can be completely covered by a bandage **OR** with orders from doctor to school nurse.

**Red eyes with eye discharge:** yellow or brown drainage from the eyes



**Symptom-free**, which means redness and discharge are gone **OR** with orders from doctor to school nurse.

**Jaundice:** new yellow color in eyes or skin



**After the school has orders** from doctor or local health authority to school nurse.

**Acting differently without a reason:** unusually sleepy, grumpy or confused



**Symptom-free**, which means return to normal behavior **OR** with orders from doctor to school nurse.

**Major health event**, like an illness lasting 2 or more weeks **OR** a hospital stay **OR** health condition requires more care than school staff can safely provide



**After the school has orders** from doctor to school nurse **AND** after measures are in place for student's safety. Please work with the school staff to address special health care needs so the student may attend safely.