



2024-25 SCHOOL YEAR CALENDAR

ALBEMARLE COUNTY PUBLIC SCHOOLS



ABOUT THIS CALENDAR

The Albemarle County Public Schools 2024-25 School Year Calendar celebrates the creativity and talents of our students. The art featured in this calendar* was created by Albemarle County students during the previous school year, and at least one original piece of artwork from every school is included.



For more information about our Fine Arts programming in Albemarle County Public Schools, please speak with an art teacher at your child’s school or visit k12albemarle.org/FineArts.

In an effort to make all of our communications more accessible to everyone in our community, you may see a number of QR codes scattered throughout the informational sections of this calendar. By scanning these codes with the camera of a smart phone, you are able to easily access web pages referenced in this publication, which can be translated to six different languages as well as browsed with accessibility assistants like screen readers.

**Photographs of artwork featured in this calendar may have been cropped to fit available space and/or printing dimensions.*

FRONT COVER ARTWORK | BRYSON JOHNSON / MURRAY
BACK COVER ARTWORK | FAITH BARRETT / JOURNEY



BAELIN DUNCAN / ALBEMARLE

TABLE OF CONTENTS

- 3** Welcome from the Superintendent & School Board Chair
- 4** School Board Information
- 5** Superintendent’s Cabinet
- 6** Strategic Plan: *Learning for All*
- 7** Policy Statements
- 8-33** 13-Month Calendar
- 34** Important Dates
- 35** Test Schedules
- 36** Inclement Weather Policy
- 37** School Lunch Information
- 38** Department Directory
- 39** School Directory
- 41** Key Advisory Groups
- 42** Keep in Touch
- 43** At-a-Glance School Calendar

WELCOME!

Dear Albemarle County Public Schools Community Members,

In June 2022, students from Monticello High School's National Art Honor Society worked with students at Mountain View Elementary School to create a mural for the school's fourth-grade hallway.

At the time, MVES fourth-graders had just moved to classrooms upstairs and their teachers noticed how empty the stairwell to the second floor seemed. So, working with the NAHS, they designed and painted a mural inspired by Salvadoran artist Fernando Llort to bring life and color to the stairwell.

Since then, MoHS and MVES students and teachers have worked together each year to expand the mural throughout the entire stairwell. This year, elementary students drew birds that mimic Llort's distinctive style and high school students helped transfer those drawings to the wall, which MVES students were then able to fill in with their favorite colors.

According to Mountain View student Julianna Martinez, the birds represent the students themselves, preparing to spread their wings and reach greater heights. Also like the students, every bird is different and unique in their own ways, as was noted by Mountain View student Mila Macasek.

You may have noticed some of these birds floating around the first few pages of our calendar. We thought it would be fun to celebrate this wonderful project, which highlights impact, teamwork, and art, by sharing the birds with our larger community. There are 17 birds throughout our calendar — can you find them all?

Sincerely,
Dr. Matthew S. Haas, Superintendent

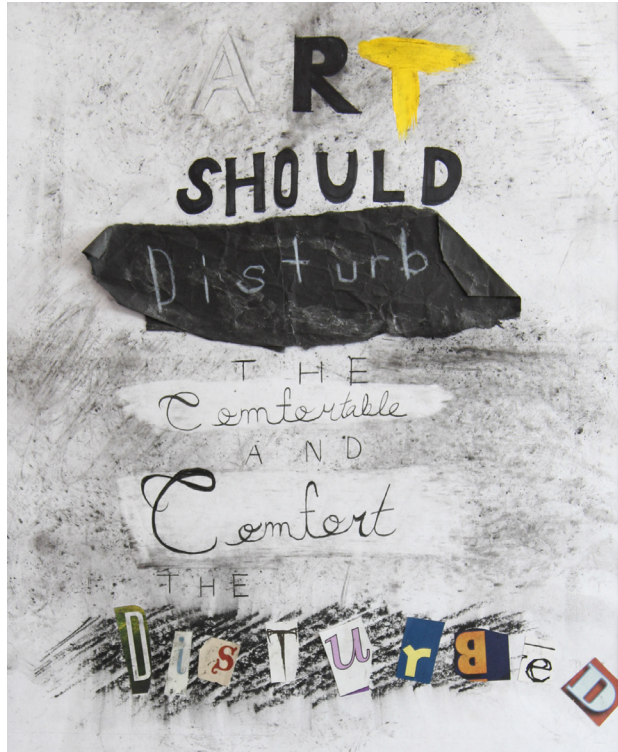
Dear ACPS Community Members,

As we embark on another exciting school year here in Albemarle County, I am honored to welcome you to our yearly calendar! Each year, I eagerly await this publication as I find such joy in showcasing the incredible creativity and talent of the young artists across our division.

This initiative also represents our commitment to fostering an environment where students can express themselves and thrive. The artwork featured in this calendar illustrates the profound impact of art education and the power of creative expression. Each piece tells a story and invites us to see our world through the eyes of our students.

We hope that as you flip through the pages of this calendar, you will be inspired by the creativity and dedication of our students. Their art serves as a testament to their hard work and the nurturing environment we strive to provide in our schools. Let us all take a moment to appreciate these beautiful creations and celebrate the vibrant community we are fortunate to be a part of.

Sincerely,
Judy Le, School Board Chair



ABOVE: ENDER ADAMS | MONTICELLO
BELOW: DAVIS KAUFFMANN | WESTERN ALBEMARLE



SCHOOL BOARD INFORMATION

ABOUT THE BOARD



The Albemarle County School Board and the Superintendent of Schools are bound in a partnership of mutual trust and vision. The school board and the superintendent are responsible for selecting the results that the school system should be pursuing. Together, the school board and the superintendent take primary responsibility for ensuring that Albemarle County Public

Schools is an effective school system. The school board governs Albemarle County Public Schools as a corporate body according to law. Members are elected by the citizens of the county and serve staggered four-year terms. There are seven members; six representing each of our magisterial districts and one at-large member.

SCHOOL BOARD POLICIES



The school board develops policies to govern the operation of the school system. These policies cover instructional programs, fiscal management, personnel, students, school and community relations, facility maintenance, and many other areas. Copies of our policies are available online through our ElectronicSchoolBoard website and copies that can be translated can be found on our School Board Policies web page. Community members can also access policies at school division offices and each of our county schools.

SCHOOL BOARD MEETINGS

The school board meets regularly throughout the school year, typically on the second and fourth Thursday of each month. The board meets at 6:30 p.m. in Lane Auditorium in the County Office Building at 401 McIntire Road. Board meetings are open to the public. Community members can visit the School Board web page at k12albemarle.org/board to access meeting livestreams and recordings; sign up to provide public comment; and view meeting schedules, agendas and minutes.

CONTACT THE BOARD

Contact information for school board members is provided on the right side of this page and also on our School Board Members web page. Community members may email the entire board at SchoolBoard@k12albemarle.org. If you are unsure who your school board representative is, you can reference a map of the county's magisterial districts on the school board's Magisterial Districts web page. If you have questions or would like more information about the board, please contact the School Board Clerk at (434) 296-5893.



JACK JOUETT DISTRICT

Kate Acuff, J.D., Ph.D., Vice-Chair
(434) 979-6333
kacuff@k12albemarle.org
Term expires: 12/31/2025



RIO DISTRICT

Charles Pace
(434) 999-4342
cpace@k12albemarle.org
Term expires: 12/31/2024



RIVANNA DISTRICT

Judy Le, Chair
(434) 326-8315
jle@k12albemarle.org
Term expires: 12/31/2027



SAMUEL MILLER DISTRICT

Graham Paige
(434) 286-3639
gp Paige@k12albemarle.org
Term expires: 12/31/2025



SCOTTSVILLE DISTRICT

Ellen Osborne
(434) 249-3295
eosborne@k12albemarle.org
Term expires: 12/31/2027



WHITE HALL DISTRICT

Rebecca Berlin
(434) 296-5820
rberlin@k12albemarle.org
Term expires: 12/31/2027



AT-LARGE REP.

Allison Spillman
(434) 999-3221
aspillman@k12albemarle.org
Term expires: 12/31/2027

VIEW DISTRICT MAP



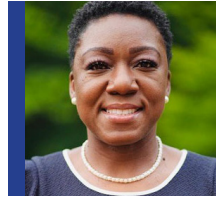
SEYLI
PADILLA
ROSALES
ALBEMARLE

SUPERINTENDENT'S CABINET



Dr. Matthew S. Haas
Superintendent of Schools
SuperintendentOffice@
k12albemarle.org

(434) 296-5826



Dr. Chandra Hayes
Assistant Superintendent for
Instruction

(434) 296-5820



Dr. Clare Keiser
Assistant Superintendent for
Organizational Development and
Human Resource Leadership

(434) 296-5820



Dr. Daphne Keiser
Assistant Superintendent for School
Community Engagement

(434) 296-5820



Patrick McLaughlin
Assistant Superintendent for
Strategic Planning

(434) 296-5820



Rosalyn Schmitt
Chief Operating Officer

(434) 296-5820



Dr. Christine Diggs
Chief Technology Officer

(434) 872-4569



Josiah Black
School Division Counsel

(434) 296-5820



Helen Dunn
Public Affairs and Strategic
Communications Officer

(434) 249-8379



LEFT: CHLOE FRENCH / COMMUNITY LAB; MIDDLE: WILLA GERLACH / COMMUNITY LAB; RIGHT: AYANSH JAMDHADE / BAKER-BUTLER

LEARNING FOR ALL

VISION

Our learners are engaged in authentic, challenging and relevant learning experiences, becoming lifelong contributors and leaders in our dynamic and diverse society.

MISSION

Working together as a team, we will end the predictive value of race, class, gender, and special capacities for our children’s success through high-quality teaching and learning for all. We seek to build relationships with families and communities to ensure that every student succeeds.

We will know every student.

VALUES

- » **Equity:** We will provide every student with the level of support necessary to thrive.
- » **Excellence:** We will mitigate barriers and provide opportunities for every student to be academically successful.
- » **Family and Community:** We will engage with and share the responsibility for student success with families and community partners.
- » **Wellness:** We will support the physical and emotional health of our students and staff.



GOALS

THRIVING STUDENTS

ACPS will facilitate learning experiences grounded in high expectations, networks of care, and student curiosity to ensure academic and social-emotional development for all students while eliminating opportunity, access, and achievement gaps.

AFFIRMING AND EMPOWERING COMMUNITIES

ACPS commits to developing a culturally-responsive environment that will respect and champion the diversity of life experiences of all stakeholders and supports the physical and mental health of our students, staff, and families so they are actively empowered to engage in our school community.

EQUITABLE, TRANSFORMATIVE RESOURCES

ACPS will attract, develop, and retain the highest quality staff; develop sustainable and modern facilities, infrastructure, and equipment; and distribute all resources in an equitable manner to transform learning experiences and opportunities.



FROM LEFT: ANNA BALLIF / ALBEMARLE; ALEXI GREGORIA / ALBEMARLE; RAINA OTTO / WESTERN ALBEMARLE; LIBBY GOOD / WALTON

POLICY STATEMENTS

ANTI-RACISM

The Albemarle County School Board and Albemarle County Public Schools reject all forms of racism as destructive to the school division's mission, vision, values and goals. The board is committed to the following principles:



1. Establishing and sustaining a school community that shares the collective responsibility to address, eliminate and prevent actions, decisions and outcomes that result from and perpetuate racism.
2. Eliminating inequitable practices and cultivating the unique gifts, talents and interests of every child to end the predictive value of social or cultural factors such as race, class or gender on student success.
3. Respecting and championing the diversity and life experiences of all community members to support the school division's mission, vision, values, goals and objectives.
4. Acknowledging that racism is often compounded by other forms of discrimination, including, but not limited to, those protective classes referenced in School Board Policy AC, *Nondiscrimination*.



NONDISCRIMINATION

Albemarle County Public Schools does not discriminate on the basis of sex, gender, race, color, national origin, disability, religion, ancestry, age, marital status, genetic information or any other characteristic protected by law in its programs and activities, and provides equal access to the Boy Scouts of America, the Girl Scouts of the USA, and other designated youth groups.



Students who have questions or concerns regarding compliance with the school division's Nondiscrimination Policy should contact:

Executive Director of Special Education & Student Services
401 McIntire Road, 3rd Floor, Charlottesville, VA 22902
(434) 296-5885

Employees who have questions or concerns regarding compliance with the school division's Nondiscrimination Policy should contact:

Director of Human Resources
401 McIntire Road, 1st Floor, Charlottesville, VA 22902
(434) 296-5827



ABOVE:
CHRISTAL
RUIZ
CARRERO
STONY POINT

LEFT: CORA
DAVIDSON
STONE-
ROBINSON



08



AUGUST 2024

LEFT: MADDOX MCINTYRE
COMMUNITY LAB
RIGHT: OLIVIA JENNINGS WOOD
MONTICELLO

SUN	MON	TUES	WEDS	THURS	FRI	SAT
28	29	30	31	1	2	3
4	5 New Teacher Academy (Aug. 5-9)	6	7	8 Regular School Board Meeting 6:30 p.m. Lane Auditorium	9	10
11	12 Teacher Workday/ Professional Development (PD) Day	13 Full Day of PD	14 Teacher Workday/ PD Day	15 Teacher Workday/ PD Day	16 Full Day of PD	17
18	19 Teacher Workday/ PD Day	20 Teacher Workday/ PD Day	21 First Day of School!	22	23	24
25	26	27	28	29	30	31

NOTES

Schools host Open House events prior to the first day of school. Please visit our Important Dates webpage at k12albemarle.org/dates for more information.

JULY 2024

S	M	T	W	T	F	S
	1	2	3	4	5	6
7	8	9	10	11	12	13
14	15	16	17	18	19	20
21	22	23	24	25	26	27
28	29	30	31			

SEPTEMBER 2024

S	M	T	W	T	F	S
1	2	3	4	5	6	7
8	9	10	11	12	13	14
15	16	17	18	19	20	21
22	23	24	25	26	27	28
29	30					



SUN	MON	TUES	WEDS	THURS	FRI	SAT
1	2 Labor Day Holiday	3	4	5	6	7
8 <i>National Arts in Education Week (Sept. 8 to Sept. 14)</i>	9	10 SEAC Meeting 7 p.m. to 9 p.m.	11	12 Regular School Board Meeting 6:30 p.m. Lane Auditorium	13	14
15	16	17	18 Family Council Meeting 6:30 p.m.	19	20	21
22 <i>First Day of Autumn</i>	23 Reserved for Mandatory Training, Teacher Work Time, Division or School-Based PD (No School)	24	25	26 Regular School Board Meeting 6:30 p.m. Lane Auditorium	27	28
29	30	1	2	3	4	5

NOTES

National Hispanic Heritage Month is observed Sept. 15 to Oct. 15.

Individual schools will share information for Back-to-School Dates.

Please visit our Important Dates webpage at k12albamarle.org/dates for more information.


AUGUST 2024

S	M	T	W	T	F	S
				1	2	3
4	5	6	7	8	9	10
11	12	13	14	15	16	17
18	19	20	21	22	23	24
25	26	27	28	29	30	31

OCTOBER 2024

S	M	T	W	T	F	S
		1	2	3	4	5
6	7	8	9	10	11	12
13	14	15	16	17	18	19
20	21	22	23	24	25	26
27	28	29	30	31		



SUN	MON	TUES	WEDS	THURS	FRI	SAT
29	30	1	2 <i>National Custodian Day</i>	3	4	5
6	7	8 SEAC Meeting 7 p.m. to 9 p.m.	9 SHAB Meeting 6:30 p.m. to 8:30 p.m. <i>Walk & Roll to School Day</i>	10 Regular School Board Meeting 6:30 p.m. Lane Auditorium	11	12
13	14* <i>Digital Citizenship Week (Oct. 14 to Oct. 18)</i> <i>National School Lunch Week (Oct. 14 to Oct. 18)</i>	15	16 Family Council Meeting 6:30 p.m.	17	18	19
20	21 <i>National School Bus Safety Week (Oct. 21 to Oct. 25)</i>	22	23 <i>End of First Quarter</i> <i>School Bus Transportation Employees Appreciation Day</i>	24 Reserved for Mandatory Training, Teacher Work Time, Division or School-Based PD (No School) Regular School Board Meeting 6:30 p.m., Lane Auditorium	25 Teacher Workday (No School)	26
27 <i>National Mentoring Day</i>	28	29	30	31	1	2 

NOTES

National Hispanic Heritage Month is observed Sept. 15 to Oct. 15.

October is National Bullying

Prevention Month, National Principals

Month, and National Learning

Disabilities Awareness Month.

*Indigenous Peoples' Day is also celebrated on October 14!

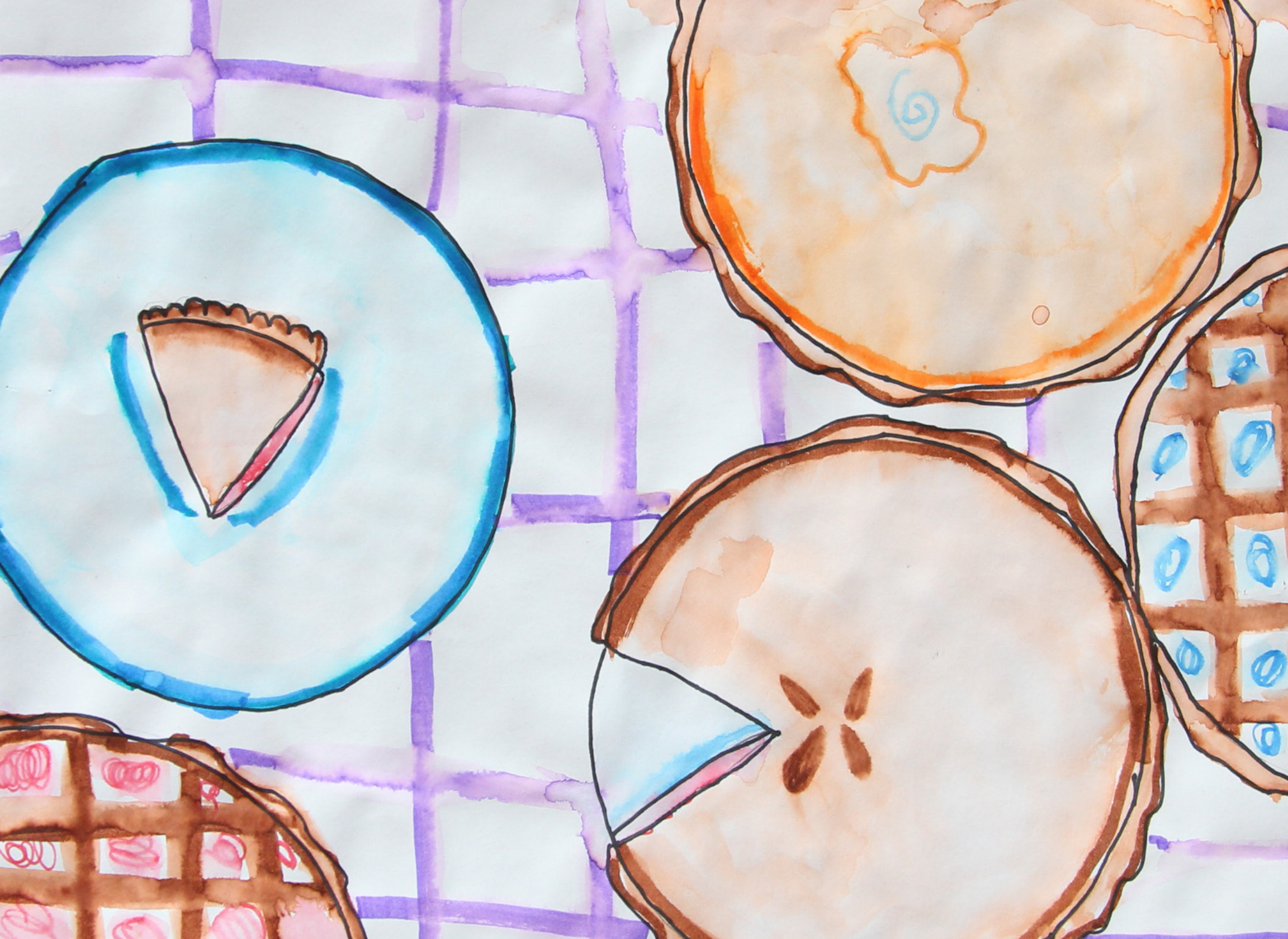
Schools hold fall parent conferences in October and November. Please visit our Important Dates webpage at k12albemarle.org/dates for more.

SEPTEMBER 2024

S	M	T	W	T	F	S
1	2	3	4	5	6	7
8	9	10	11	12	13	14
15	16	17	18	19	20	21
22	23	24	25	26	27	28
29	30					

NOVEMBER 2024

S	M	T	W	T	F	S
					1	2
3	4	5	6	7	8	9
10	11	12	13	14	15	16
17	18	19	20	21	22	23
24	25	26	27	28	29	30





NOVEMBER 2023

SUN	MON	TUES	WEDS	THURS	FRI	SAT
27	28	29	30	31	1	2
3 <i>Daylight Saving Time Ends (Set clocks back 1 hour)</i>	4 Full Day of PD (No school)	5 <i>Election Day (No school)</i> Day reserved for Parent Conferences	6	7	8	9
10	11 <i>Veterans Day</i>	12 SEAC Meeting 7 p.m. to 9 p.m.	13	14 Regular School Board Meeting 6:30 p.m. Lane Auditorium	15	16
17	18 <i>American Education Week (Nov. 18 to Nov.22)</i>	19	20 Family Council Meeting 6:30 p.m. <i>Education Support Professionals Day</i>	21	22 <i>Substitute Educators Day</i>	23
24	25	26	27 <i>Thanksgiving Holiday (Nov. 27 to Nov. 29)</i>	28	29	30

NOTES

November is Family Engagement in Education Month.

Schools hold fall parent conferences in October and November. Please

visit our Important Dates webpage at k12albemarle.org/dates for more information.

OCTOBER 2024

S	M	T	W	T	F	S
		1	2	3	4	5
6	7	8	9	10	11	12
13	14	15	16	17	18	19
20	21	22	23	24	25	26
27	28	29	30	31		

DECEMBER 2024

S	M	T	W	T	F	S
1	2	3	4	5	6	7
8	9	10	11	12	13	14
15	16	17	18	19	20	21
22	23	24	25	26	27	28
29	30	31				



SUN	MON	TUES	WEDS	THURS	FRI	SAT
1	2 <i>National Special Education Day</i>	3	4	5 <i>International Volunteer Day</i>	6	7
8	9 <i>Computer Science Education Week and Hour of Code (Dec. 9 to Dec. 15)</i>	10 SEAC Meeting 7 p.m. to 9 p.m.	11 SHAB Meeting 6:30 p.m. to 8:30 p.m.	12 Regular School Board Meeting 6:30 p.m. Lane Auditorium	13	14
15	16	17	18	19	20	21 <i>First Day of Winter</i>
22	23 Winter Break (Dec. 23 - Jan. 3)	24	25	26	27	28
29	30	31	1	2	3	4

NOTES

NOVEMBER 2024

S	M	T	W	T	F	S
					1	2
3	4	5	6	7	8	9
10	11	12	13	14	15	16
17	18	19	20	21	22	23
24	25	26	27	28	29	30

JANUARY 2025

S	M	T	W	T	F	S
			1	2	3	4
5	6	7	8	9	10	11
12	13	14	15	16	17	18
19	20	21	22	23	24	25
26	27	28	29	30	31	



JANUARY 2025

LEFT: ALLISON MEMBRENO QUINTEROS
 BAKER-BUTLER
 RIGHT: HAYES COSTELLO
 ALBEMARLE

SUN	MON	TUES	WEDS	THURS	FRI	SAT
29	30	31	1 New Year's Day Holiday Winter Break (Dec. 23 - Jan. 3)	2	3	4
5	6 Reserved for Mandatory Training, Teacher Work Time, Division or School- Based PD (No School)	7	8	9	10	11
12	13	14 SEAC Meeting 7 p.m. to 9 p.m.	15 Family Council Meeting 6:30 p.m.	16 End of Second Quarter	17 Teacher Workday (No School)	18
19	20 Martin Luther King, Jr. Day Holiday	21	22	23	24	25
26	27	28	29	30	31	1

NOTES

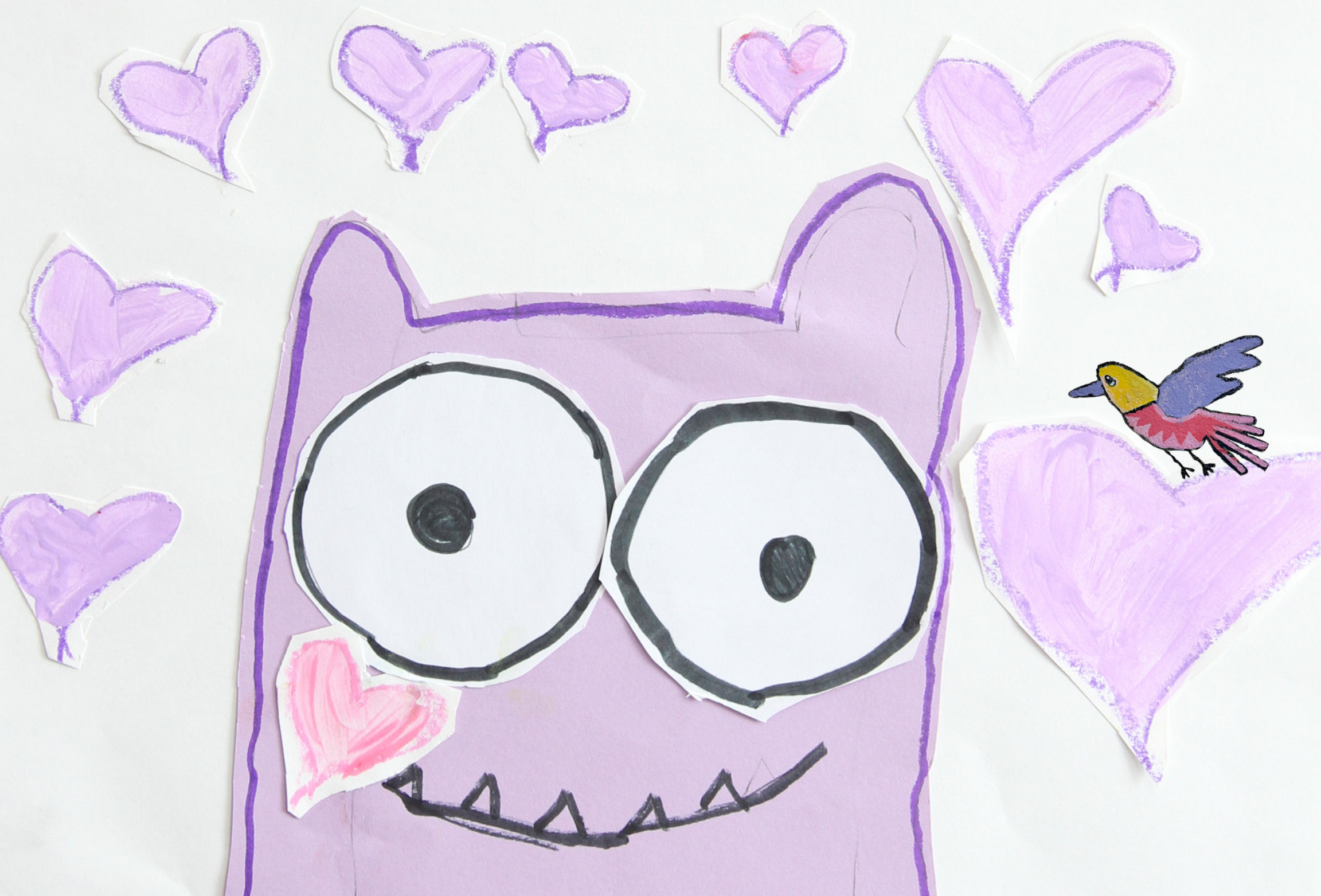
Please visit esb.k12albemarle.org for
 School Board meeting dates for 2024.

DECEMBER 2024

S	M	T	W	T	F	S
1	2	3	4	5	6	7
8	9	10	11	12	13	14
15	16	17	18	19	20	21
22	23	24	25	26	27	28
29	30	31				

FEBRUARY 2025

S	M	T	W	T	F	S
						1
2	3	4	5	6	7	8
9	10	11	12	13	14	15
16	17	18	19	20	21	22
23	24	25	26	27	28	



FEBRUARY 2025

SUN	MON	TUES	WEDS	THURS	FRI	SAT
26	27	28	29	30	31	1
2	3 <i>National School Counseling Week (Feb. 3 to Feb. 7)</i>	4	5	6	7	8
9	10	11 <i>SEAC Meeting 7 p.m. to 9 p.m.</i>	12 <i>SHAB Meeting 6:30 p.m. to 8:30 p.m.</i>	13 <i>Digital Learning Day</i>	14	15
16	17 <i>Reserved for Mandatory Training, Teacher Work Time, Division or School-Based PD (No School)</i>	18	19 <i>Family Council Meeting 6:30 p.m.</i>	20	21	22
23	24	25	26	27	28	1

NOTES

February is Black History Month and Career and Technical Education Month. Schools hold spring parent conferences in February and March. Please visit our Important Dates webpage at k12albemarle.org/dates for more information.

JANUARY 2025

S	M	T	W	T	F	S
			1	2	3	4
5	6	7	8	9	10	11
12	13	14	15	16	17	18
19	20	21	22	23	24	25
26	27	28	29	30	31	

MARCH 2025

S	M	T	W	T	F	S
						1
2	3	4	5	6	7	8
9	10	11	12	13	14	15
16	17	18	19	20	21	22
23	24	25	26	27	28	29
30	31					



MARCH 2025

SUN	MON	TUES	WEDS	THURS	FRI	SAT
23	24	25	26	27	28	1
2 <i>NEA's Read Across America</i>	3 <i>National School Breakfast Week (March 3 to March 7)</i>	4	5	6	7	8
9 <i>Daylight Saving Time Begins (Set clocks back 1 hour)</i>	10	11 <i>SEAC Meeting 7 p.m. to 9 p.m.</i>	12	13	14	15
16 	17 <i>Reserved for Mandatory Training, Teacher Work Time, Division or School-Based PD (No School)</i>	18	19 <i>Family Council Meeting 6:30 p.m.</i>	20 <i>First Day of Spring</i>	21	22
23 30	24 31 <i>Spring Break (Mar. 31 - Apr. 4)</i>	25	26	27 <i>End of Third Quarter</i>	28 <i>Teacher Workday (No School)</i>	29

NOTES

March is VSBA Students and Schools in Challenging Environments Month, Music in Our Schools Month, Women's History Month, Youth in Art Month, and Developmental Disabilities Awareness Month. Schools hold spring parent conferences in February and March. Please visit our Important Dates webpage at k12albemarle.org/dates for more information.

FEBRUARY 2025

S	M	T	W	T	F	S
						1
2	3	4	5	6	7	8
9	10	11	12	13	14	15
16	17	18	19	20	21	22
23	24	25	26	27	28	

APRIL 2025

S	M	T	W	T	F	S
		1	2	3	4	5
6	7	8	9	10	11	12
13	14	15	16	17	18	19
20	21	22	23	24	25	26
27	28	29	30			



APRIL 2025

LEFT: LYLA NOFFSINGER

AGNOR

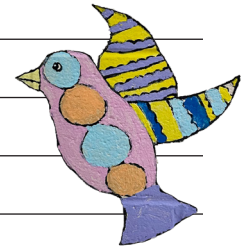
RIGHT: LUIS HEREDIA-SANTIAGO

SCOTTSVILLE

SUN	MON	TUES	WEDS	THURS	FRI	SAT
30	31 Spring Break (March 31 to April 4)	1 National Assistant Principals Week (April 1 to April 4)	2	3	4	5
6 National Library Week (April 6 to April 12)	7	8 SEAC Meeting 7 p.m. to 9 p.m.	9	10	11	12
13	14	15	16 Family Council Meeting 6:30 p.m.	17 Purple Up! For Military Kids Day	18	19
20	21 Public School Volunteer Week (April 21 to April 25)	22 National Student Leadership Week (April 22 to April 26)	23 Administrative Professionals Day	24	25	26
27	28 Reserved for Mandatory Training, Teacher Work Time, Division or School-Based PD (No School)	29	30	1	2	3

NOTES

April is School Library Month and Month of the Military Child.



MARCH 2025

S	M	T	W	T	F	S
						1
2	3	4	5	6	7	8
9	10	11	12	13	14	15
16	17	18	19	20	21	22
23	24	25	26	27	28	29
30	31					

MAY 2025

S	M	T	W	T	F	S
				1	2	3
4	5	6	7	8	9	10
11	12	13	14	15	16	17
18	19	20	21	22	23	24
25	26	27	28	29	30	31



SUN	MON	TUES	WEDS	THURS	FRI	SAT
27	28	29	30	1 <i>National School Principals' Day</i> <i>National PE & Sport Week (May 1 to May 7)</i>	2 <i>School Lunch Hero Day</i>	3
4	5 <i>National Teacher Appreciation Week (May 5 to May 9)</i>	6 <i>National Teacher Day</i>	7 <i>National School Nurse Day</i>	8	9 <i>School Communicators Day</i>	10
11	12	13 <i>SEAC Meeting 7 p.m. to 9 p.m.</i>	14 <i>SHAB Meeting 6:30 p.m. to 8:30 p.m.</i>	15	16	17
18	19	20	21 <i>Family Council Meeting 6:30 p.m.</i>	22	23	24
25	26 <i>Memorial Day Holiday</i>	27	28	29	30	31

NOTES

May is Asian American, Native

Hawaiian, and Pacific Islander

Heritage Month and Mental Health

Awareness Month.

APRIL 2025

S	M	T	W	T	F	S
		1	2	3	4	5
6	7	8	9	10	11	12
13	14	15	16	17	18	19
20	21	22	23	24	25	26
27	28	29	30			

JUNE 2025

S	M	T	W	T	F	S
1	2	3	4	5	6	7
8	9	10	11	12	13	14
15	16	17	18	19	20	21
22	23	24	25	26	27	28
29	30					



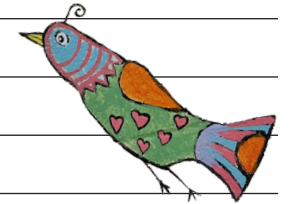
JUNE 2025

TOP LEFT: NORA NEATHERY
 TOP RIGHT: LILY ZOVKO
 BOTTOM LEFT: ABI LOWES
 BOTTOM RIGHT: CAMERON HUYNH
 HENLEY

SUN	MON	TUES	WEDS	THURS	FRI	SAT
1	2	3	4	5	6 Last Day of School (Half-Day) End of Fourth Quarter Afternoon Reserved for Teacher Workday	7
8	9 Teacher Workday Last Day of Work for Teachers	10	11	12	13	14
15	16	17	18	19 Juneteenth Holiday	20 First Day of Summer	21
22	23	24	25	26	27	28
29	30	1	2	3	4	5

NOTES

June is Lesbian, Gay, Bisexual, Transgender, and Queer Pride Month.



MAY 2025

S	M	T	W	T	F	S
				1	2	3
4	5	6	7	8	9	10
11	12	13	14	15	16	17
18	19	20	21	22	23	24
25	26	27	28	29	30	31

JULY 2025

S	M	T	W	T	F	S
		1	2	3	4	5
6	7	8	9	10	11	12
13	14	15	16	17	18	19
20	21	22	23	24	25	26
27	28	29	30	31		



07



JULY 2025

MAZIE WISEMAN
WESTERN ALBEMARLE

SUN	MON	TUES	WEDS	THURS	FRI	SAT
29	30	1	2	3	4 Independence Day Holiday	5
6	7	8	9	10	11	12
13	14	15	16	17	18	19
20	21	22	23	24	25	26
27	28	29	30	31	1	2

NOTES

JUNE 2025

S	M	T	W	T	F	S
1	2	3	4	5	6	7
8	9	10	11	12	13	14
15	16	17	18	19	20	21
22	23	24	25	26	27	28
29	30					

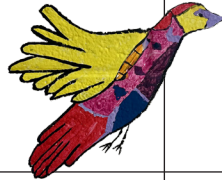
AUGUST 2025

S	M	T	W	T	F	S
					1	2
3	4	5	6	7	8	9
10	11	12	13	14	15	16
17	18	19	20	21	22	23
24	25	26	27	28	29	30
31						

Maverick



SUN	MON	TUES	WEDS	THURS	FRI	SAT
27	28	29	30	31	1	2
3	4	5	6	7	8	9
10	11	12	13	14	15	16
17	18	19	20	21	22	23
24	25	26	27	28	29	30
31						



NOTES

JULY 2025

S	M	T	W	T	F	S
		1	2	3	4	5
6	7	8	9	10	11	12
13	14	15	16	17	18	19
20	21	22	23	24	25	26
27	28	29	30	31		

SEPTEMBER 2025

S	M	T	W	T	F	S
	1	2	3	4	5	6
7	8	9	10	11	12	13
14	15	16	17	18	19	20
21	22	23	24	25	26	27
28	29	30				



MADDIE RASMUSSEN / WALTON



NEVIN DURAN / WOODBROOK

TESTING SCHEDULES

VIRGINIA STANDARDS OF LEARNING

During the course of the school year, students in grades 3 through 8 and some in grades 9 through 12 will participate in required state academic testing. The Standards of Learning (SOL) for Virginia Public Schools establish minimum expectations for student learning and achievement.



Students in grades 3 through 8 take SOL tests in reading, writing, and math. In addition, students in grades 5 and 8 take SOL tests in science and history/social studies. High school students take end-of-course SOL exams in all four subject areas.

2024-25 SOL TESTING WINDOWS

- Fall 2024 SOL Writing test Window: October 21 through November 8
- Fall 2024 Non-Writing Test Window: December 1 through January 16
- Spring 2025 SOL Writing Test Window: March 3 through April 4
- Spring 2025 SOL Non-Writing Test Window: May 5 through June 2

SAT & SAT SUBJECT TESTS

The SAT and SAT Subject Tests are designed to assess students' academic readiness for college. The SAT is a college entrance exam that measures skills in reading, writing and math. Most students take the SAT during their junior or senior year of high school.



SAT Subject tests are content-based tests that allow students to showcase their achievement in specific subject areas. Registration and testing dates for the SAT and SAT Subject Tests can be found at sat.org.



PSAT/NMSQT

The Preliminary SAT/National Merit Scholarship Qualifying Test (PSAT/NMSQT) measures critical reading skills, writing skills and math problem-solving skills, and provides first-hand practice for college entrance exams, such as the SAT. Taking the test can qualify students for scholarships and other honors. Typically, students take the test as sophomores and juniors, though some take it earlier.



Please check with your school counselor for the date of the PSAT/NMSQT. The official testing window runs from **October 1, 2024 to October 31, 2024**.

ADVANCED PLACEMENT EXAMS

The Advanced Placement (AP) Examinations are administered each year in May and represent the culmination of college-level work in a given discipline in a secondary school setting. Rigorously developed by committees of college and AP high school faculty, the AP Exams test students' ability to perform at a college level. Students who perform well can receive college credit and/or advanced standing at thousands of universities worldwide. For more information, visit apstudents.org.



2024-25 AP EXAM SCHEDULE

Week 1	Morning (8 a.m.) Local Time	Afternoon (12 noon) Local Time
Monday, May 5, 2025	Biology Latin	European History Microeconomics
Tuesday, May 6, 2025	Chemistry Human Geography	United States Government and Politics
Wednesday, May 7, 2025	English Literature and Composition	Comparative Government and Politics Computer Science A
Thursday, May 8, 2025	African American Studies Statistics	Japanese Language and Culture World History: Modern
Friday, May 9, 2025	Italian Language and Culture United States History	Chinese Language and Culture Macroeconomics
Week 2	Morning (8 a.m.) Local Time	Afternoon (12 noon) Local Time
Monday, May 12, 2025	Calculus AB Calculus BC	Music Theory Seminar
Tuesday, May 13, 2025	French Language and Culture Precalculus	Environmental Science Physics 2: Algebra-Based
Wednesday, May 14, 2025	English Language and Composition German Language and Culture	Physics C: Mechanics
Thursday, May 15, 2025	Art History Spanish Language and Culture	Computer Science Principles Physics C: Electricity and Magnetism
Friday, May 16, 2025	Physics 1: Algebra-Based Spanish Literature and Culture	Psychology

Art and Design: Friday, May 9, 2025, at 8p.m. is the deadline for AP Art and Design students to submit their three portfolio components as final in the AP Digital Portfolio.



POLINA SALERNO | MOUNTAIN VIEW

INCLEMENT WEATHER DECISIONS

ACPS approaches inclement weather decisions with the safety of our students, staff, and other members of our community as our primary concern. We consider information from several sources to help us reach each decision, including:



- Road conditions within the entire county for bus travel and student and staff drivers;
- Weather forecasts; and
- Assessments by law enforcement, the Virginia Department of Transportation (VDOT), and other localities.

FIND OUT ABOUT SCHEDULE CHANGES

Families and community members can learn the division's school schedule status during inclement weather in several ways:

SCHOOL SCHEDULE HOTLINE

Community members may call (434) 296-5886 to listen to a prerecorded message about school operations for the day. The recording is updated by 5:30 a.m.

Para español, llame al (434) 975-9332.

ELECTRONIC ALERT: PHONE, EMAIL AND/OR TEXT

Parents and guardians are provided an opportunity at the start of each school year to enroll in the Electronic School Notification System to receive notifications from the school division by phone (landline or cellphone), email and/or text. Parents or guardians may also enroll at any time or change their preferences by contacting their child's school.

ALBEMARLE COUNTY PUBLIC SCHOOLS WEBSITE

The division will activate our web alert system to help communicate school schedule changes. The system uses pop-up messages to alert website visitors to important information.

SOCIAL MEDIA

Like us on Facebook at [facebook.com/k12albemarle](https://www.facebook.com/k12albemarle) or follow us on X at x.com/k12albemarle for inclement weather updates.

LOCAL MEDIA OUTLETS

School schedule changes are broadcast on several local radio and television stations, as well as local media websites.

For more information about school schedule changes due to inclement weather, including decision and communication timelines, visit [k12albemarle.org/closings](https://www.k12albemarle.org/closings).

SCHOOL MEALS

The purpose of the Child Nutrition Program, in partnership with our school community, is to provide healthy and balanced meals by offering excellent service while promoting nutrition and wellness. Visit us online at k12albemarle.org/ChildNutrition to access menus, nutritional standards, the Application for Free and Reduced Price Meals, income guidelines and more. Or, call (434) 295-0566.



BREAKFAST AND LUNCH

Breakfast is available at all schools and provides students with the energy and nutrients needed to keep on task throughout the school day. All elementary, middle and comprehensive high schools in Albemarle County offer school lunch as part of the United States Department of Agriculture (USDA) National School Lunch Program.

MENUS

Albemarle County Public Schools menus are planned by a nutritionist and follow the regulations set forth in the Healthy, Hunger-Free Kids Act of 2010. In accordance with regulations, students must choose a serving of either fruit or vegetables to qualify their meal as a school breakfast or lunch. Each day, a variety of entree choices, featured salads, fresh fruit and vegetables, and whole grains are offered. A la carte items, such as yogurt, fresh fruit and reduced-fat snacks, are available as well. Menus can be viewed on our website at k12albemarle.org/ChildNutrition. Students have choices in the food they select. Come join us for a meal and see the great choices we offer!

FREE AND REDUCED PRICE MEALS

Families may apply for free and reduced meal benefits online. The process is safe, secure, private and available any time. Your data is transmitted to the Child Nutrition Office the same day you apply, allowing for faster processing so you can receive benefits more quickly. Additionally, an Application for Free and Reduced Price Meals is included in every student's annual school registration packet and available at each school office. The form is also available at k12albemarle.org/ChildNutrition. For those interested in applying, **a new application should be completed each school year.**

Families are encouraged to complete the application if they believe they may be eligible for free or reduced price meals. Eligibility status is completely confidential and applications are accepted at any time.

2024-25 MEAL PRICES

	Full Price	Reduced
Student Breakfast	\$1.85	Waived
Student Lunch, Elementary	\$3.35	Waived
Student Lunch, Middle & High	\$3.55	Waived
Adult Breakfast	a la carte	
Adult Lunch	a la carte	

**Student breakfast and lunch prices were unavailable as of publication. Please see k12albemarle.org/our-departments/nutrition/pricing for school meal pricing information.*

PAYMENT

Individual student accounts allow all students to prepay for meals, which helps speed up the lunch lines. When they reach the end of the lunch line, students simply enter a five-digit PIN into a keypad, and the cost of their meal is deducted from their balance.



Students in need of a meal who have no funds available will be provided with a qualified USDA meal and their parent or guardian will be responsible for those charges. Parents or guardians are responsible for keeping up-to-date with their child's meal account balance.

Any amount of money can be deposited into an account using cash or check. With this option, please be sure to write the student's full name and PIN on the check or envelope containing the money. We encourage all parents or guardians to set up an account at mySchoolBucks.com. There is no cost to set up an account, which allows parents or guardians to view and manage their child's transactions and even set up low-balance notifications. The mySchoolBucks site also offers an online credit card payment option, with a convenience fee. Visit mySchoolBucks.com for details.



TOP: ANISSA JONES | JOURNEY
BOTTOM: FRANCES MURRAY | BROADUS WOOD

SERVICE DIRECTORY

Included below are many of the most requested phone numbers for our services. For a more extensive list of services, including contact names and web page links, please visit our Directories web page at k12albemarle.org/directories. For assistance locating the information you need, please call (434) 296-5820.

A-B

Adult Education	(434) 296-3872
Albemarle County Parent Resource Center	(434) 296-5885
Albemarle Foundation for Education	(434) 284-0354
Assessment (Testing)	(434) 296-5820
Athletics	(434) 296-5820
Attendance Areas	(434) 973-5716
Building Services (Custodial Services, Maintenance)	(434) 975-9340
Bullying Prevention	(434) 296-5820
Bus Routes	(434) 973-5716
Business and Community Partnerships	(434) 296-5820

C-D

Capital Project Planning (Facilities Planning)	(434) 296-5829
Child Nutrition Program (School Meals)	(434) 295-0566
Communications	(434) 975-9452
Community Education: Open Doors	(434) 975-9450
Community Engagement	(434) 296-5820
Community Usage Hotline	(434) 975-9331
Culturally Responsive Teaching	(434) 296-5820
Donations	(434) 296-5829
Driver Education	(434) 975-9450

E-G

Early Childhood Special Education	(434) 296-5885
Elementary Education (Pre-K through 5th Grade)	(434) 296-5820
Environmental Management	(434) 975-9340
Equity Education	(434) 296-5820
Extended Day Enrichment Programs (EDEP)	(434) 296-5840
Facility Rental	(434) 975-9340
Families in Crisis Program	(434) 296-3872
Family Support Program (Social Services Partnership)	(434) 972-4010
Fiscal Services (Budget, School Finance)	(434) 296-5829
Freedom of Information Act (FOIA) Requests	(434) 975-9452
Gold Card Club	(434) 296-5820

H-N

Homeschool	(434) 296-6517
Human Resources	(434) 296-5827
International Welcome Center	(434) 296-6517
Media Relations.....	(434) 975-9452
Mental Health and Wellness	(434) 296-5820
Migrant Education	(434) 296-3872
Motorcycle Safety	(434) 975-9450
Newcomer Learning Community	(434) 978-3475

P-R

Policies	(434) 296-5820
Preschool	(434) 296-5820
Professional Development.....	(434) 296-5820
Research and Survey Requests	(434) 296-5820

S

Safety and Security	(434) 296-5820
School Board Information	(434) 972-4055
School Counseling	(434) 296-5820
School Health Services	(434) 296-5820
School Schedule Hotline (English)	(434) 296-5886
School Schedule Hotline (español)	(434) 975-9332
Secondary Education (Grades 6 through 12)	(434) 296-5820
Social Media and Website Services	(434) 296-5820
Special Education	(434) 296-5885
Strategic Planning	(434) 296-5820
Student Registration	(434) 296-5820
Superintendent's Office	(434) 296-5826

T-W

Technology Support.....	(434) 872-4569
Technology Support (Service Desk)	(434) 975-9444
Transportation Services	(434) 973-5716
Volunteer & Business Partnerships	(434) 296-5820
Work-Based Learning & Internships	(434) 296-5820

SCHOOL DIRECTORY

SCHOOL/ACADEMY/CENTER	ADDRESS	PHONE	PRINCIPAL/DIRECTOR
Agnor Elementary School (formerly Agnor-Hurt)	3201 Berkmar Dr., Charlottesville, VA 22901	(434) 973-5211	Michael Irani
Baker-Butler Elementary School	2740 Proffit Rd., Charlottesville, VA 22911	(434) 974-7777	Bradley Handrich
Broadus Wood Elementary School	185 Buck Mountain Rd., Earlysville, VA 22936	(434) 973-3865	Amy Morris
Brownsville Elementary School	5870 Rockfish Gap Tpke., Crozet, VA 22932	(434) 823-4658	Jim Kyner
Crozet Elementary School	1407 Crozet Ave., Crozet, VA 22932	(434) 823-4800	Staci England
Greer Elementary School	190 Lambs Ln., Charlottesville, VA 22901	(434) 973-8371	Steve Saunders
Hollymead Elementary School	2775 Powell Creek Dr., Charlottesville, VA 22911	(434) 973-8301	Joe McCauley
Ivy Elementary School	1610 Owensville Rd., Charlottesville, VA 22901	(434) 293-9304	Jennifer Underwood
Mountain View Elementary School	1757 Avon St. Extended, Charlottesville, VA 22902	(434) 293-7455	Seth Kennard
Murray Elementary School	3251 Morgantown Rd., Charlottesville, VA 22903	(434) 977-4599	Wendy Eckerle
Red Hill Elementary School	3901 Red Hill School Rd., North Garden, VA 22959	(434) 293-5332	Nancy McCullen
Scottsville Elementary School	7868 Scottsville Rd., Scottsville, VA 24590	(434) 286-2441	Cyndi Wells
Stone-Robinson Elementary School	958 North Milton Rd., Charlottesville, VA 22911	(434) 296-3754	Leslie Wills-Taylor
Stony Point Elementary School	3893 Stony Point Rd., Keswick, VA 22947	(434) 973-6405	Maureen Jensen
Woodbrook Elementary School	100 Woodbrook Dr., Charlottesville, VA 22901	(434) 973-6600	Principal Search Underway
Burley Middle School	901 Rose Hill Dr., Charlottesville, VA 22903	(434) 295-5101	Kasaundra Blount
Henley Middle School	5880 Rockfish Gap Tpke., Crozet, VA 22932	(434) 823-4393	Rick Vrhovac, Substitute
Journey Middle School	210 Lambs Ln., Charlottesville, VA 22901	(434) 975-9320	Ashby Johnson
Lakeside Middle School	2801 Powell Creek Dr., Charlottesville, VA 22911	(434) 975-0599	Michael Craddock
Walton Middle School	4217 Red Hill Rd., Charlottesville, VA 22903	(434) 977-5615	Josh Walton
Albemarle High School	2775 Hydraulic Rd., Charlottesville, VA 22901	(434) 975-9300	Damean Barfield
Monticello High School	1400 Independence Way, Charlottesville, VA 22902	(434) 244-3100	Beth Costa
Western Albemarle High School	5941 Rockfish Gap Tpke., Crozet, VA 22932	(434) 823-8700	Jennifer Sublette
Community Lab School (grades 6-12)	1200 Forest St., Charlottesville, VA 22903	(434) 296-3090	Chad Ratliff
Center for Learning & Growth	225 Lambs Ln., Charlottesville, VA 22901	(434) 974-8070	Kevin Kirst
Center I	1180 Seminole Trl., Ste. 225, Charlottesville, VA 22901	(434) 244-8900	Jeff Prillaman
Post High	915 Henry Ave., Charlottesville, VA 22903	(434) 977-4610	Emily Blase
Charlottesville Area Technical Education Center (CATEC)	1000 East Rio Rd., Charlottesville, VA 22901	(434) 973-4461	Stacy Heltz
Ivy Creek School	227 Lambs Ln., Charlottesville, VA 22901	(434) 975-9420	Gary Wintersgill
Piedmont Regional Education Program	227 Lambs Ln., Charlottesville, VA 22901	(434) 975-9400	Angela Neely

*Please visit k12albemarle.org/our-schools for the most up-to-date information on leadership.



LEFT: LUCIEN DURETTE | GREER
 TOP: ABBIGAIL GIBBS | CROZET
 BOTTOM: KEILAH ELENA ZOMETA | LAKESIDE

KEY ADVISORY GROUPS

Family and community partner advisory groups offer a broad range of opportunities for community engagement with public education. If you are interested in serving on one (or more) of the advisory groups listed below, please visit our website at k12albemarle.org/advisory for advisory group contacts and information on meetings. ACPS encourages and seeks active engagement/involvement from families and community partners to contribute to our work.



ADVISORY COMMITTEE FOR ENVIRONMENTAL SUSTAINABILITY (ACES)

Informs and advises the Superintendent and School Board concerning measures to help the division develop and reach sustainability goals and foster an integrated series of tools and knowledge for the growth of environmental awareness.

ATHLETIC ADVISORY COUNCIL

Serves as a forum for families, students, and school officials to share ideas and exchange information to further advance the quality of the athletic student experience with their school. The Athletic Advisory Council meets regularly at each individual school and is led by the school Athletic Director.

BUDGET ADVISORY COMMITTEE

Analyzes, evaluates, and advises the Superintendent and division staff regarding budgeting practices and priorities from a business perspective. The committee is composed of business professionals with significant budgeting experience. The Budget Advisory Committee meeting quarterly.

CHARTER SCHOOLS REVIEW COMMITTEE

Reviews charter school applications, conducts applicant interviews and makes recommendations to the School Board. The committee convenes upon receipt of charter school applications and meets as necessary to carry out the responsibilities designated in School Board Policy LC, *Albemarle County Charter Schools*.

COUNTY STUDENT ADVISORY COUNCIL

Represents the opinions of students in an advisory capacity to the School Board. Council members aim to better share and exchange ideas and solutions to common problems across schools and work to better the school system and the surrounding community. The County Student Advisory Council meets monthly.

CAREER AND TECHNICAL EDUCATION (CTE) ADVISORY COMMITTEE

Represents business and industry, education, labor organizations, special populations, community, government, students, parents and teachers. This committee provides recommendations to the School Board on current job needs and the relevancy of career and technical education programs offered and assists in the development, implementation, and evaluation of the local plan and application.

EQUITY AND DIVERSITY COMMITTEE

Advises the division on adopting and modifying policies and practices to address equity and opportunity gaps to improve student achievement. Committee members serve two-year terms. The Equity & Diversity Advisory Committee meets monthly.

FAMILY COUNCIL

Serves as a forum for families, educators, and school officials to share ideas and exchange information to further advance the quality of the public education system within Albemarle County. Family Council meets monthly. Families interested in serving as a school representative or attending Family Council Meetings must inform their school's Principal of their interest.

LONG-RANGE PLANNING ADVISORY COMMITTEE (LRPAC)

Informs and advises the Superintendent and School Board in the development of comprehensive, long-term plans for facilities needs most effectively and efficiently in support of the school division's strategic plan. LRPAC meets quarterly.

REDISTRICTING ADVISORY COMMITTEE (RAC)

When convened, works in cooperation with staff to analyze relevant data and redistricting options to present to the superintendent. The RAC meets as needed.

SCHOOL HEALTH ADVISORY BOARD (SHAB)

Assists with developing health policy in the division and evaluating the status of school health, health education, the school environment, and Health Services. SHAB meets quarterly, but also by special session at the request of the Superintendent or School Board.

SCHOOL SAFETY ADVISORY COMMITTEE

Provides valuable perspectives regarding issues and concerns related to school safety and security. Committee members include ACPS employees, community members, mental health professionals, and local law enforcement representatives who work together to provide recommendations to the Superintendent's Cabinet on issues related to school safety and security. The School Safety Advisory Committee meets quarterly.

SPECIAL EDUCATION ADVISORY COMMITTEE (SEAC)

Comprised of parents of students who require special education services, educators in the field, and community members who have an interest in special education. The committee provides advice concerning the needs of children with disabilities receiving special education services and assists in the formation and development of long-range plans for these children. SEAC meets monthly.

TALENT DEVELOPMENT ADVISORY COMMITTEE

Oversees the implementation of the *Local Plan for the Education of the Gifted*, including participating in the biennial review and revision of the Local Plan and reporting to the School Board through the superintendent about the needs of gifted learners in our county. The Talent Development Advisory Committee meets quarterly.

TEACHER ADVISORY COMMITTEE (TAC)

Group of teachers, including a representative from each school, who meet with central office staff to discuss items of interest to teachers and give feedback on county initiatives and programs. TAC meets quarterly throughout the school year.

TITLE I PARENT ADVISORY

Provides feedback and suggestions for ways Albemarle County can improve our Title I program. The Title I Parent Advisory meets twice a year.

OUTREACH

One of the main goals of ACPS is to ensure that our community stays informed about the goings-on within the division. We use many channels to send information to parents, staff and students.



SARAH WANDER | WOODBROOK

OPT IN TO TEXT MESSAGES FROM ACPS!

Would you like to begin receiving text messages from Albemarle County Public Schools? You can opt in to text messaging at any time by sending the word "Yes" to the short code 87569. Once you opt in, you will receive a confirmation message from BrightArrow, our mass messaging system.

Please note: To receive text messages, your mobile phone number must also be listed as one of your child's electronic notification system contact numbers. If you need to update your contact preferences, please call your child's school.

ACPS WEBSITE

An essential communications tool, the Albemarle County Public Schools website helps the division meet the diverse communication needs of our school communities and increases opportunities for meaningful engagement. Our website supports mobile-first design and meets accessibility requirements of the Americans with Disabilities Act (ADA). Find our website at k12albemarle.org.

CONNECTIONS: DIVISION NEWSLETTER

Our monthly newsletter, *Connections*, is a way to connect with our community on a monthly basis and share positive and important news with our stakeholders. Designed to be visually pleasing and dynamic, *Connections* is sent to all staff, parents and secondary students on the last Friday of each month.



Connections contains a short message from the superintendent each month, a parent perspective on current events in the division, upcoming events and opportunities, and much more!

PORTRAITS OF A DIVISION

Our Portraits of a Division aim to highlight the amazing staff and students we know are scattered all throughout our division. We post two types of features here: Portrait of an ACPS Student, which highlights students from across our division, and Portrait of an ACPS Staff Member, which highlights our amazing employees.



SOCIAL MEDIA

The division virtually shares information and collaborates with our community and larger audiences through multiple social media channels, including Facebook, Twitter and YouTube. Social media posts may include text, photos and/or videos.



VIDEOS

Video is just one way the Communications team works with schools and departments across the division to promote the work we are doing in our division to facilitate high-quality teaching and learning. Members of the public can visit our ACPS Videos page to watch a featured video and preview other recent videos. All ACPS videos are available through our YouTube channel.

¿OPTAR POR LA MENSAJERÍA DE TEXTO!

¿Le gustaría comenzar a recibir mensajes de texto de las Escuelas Públicas del Condado de Albemarle? Puede optar por recibir mensajes de texto en cualquier momento enviando la palabra "Sí" al código corto 87569. Una vez que se haya suscrito, recibirá un mensaje de confirmación de BrightArrow, nuestro sistema de mensajería masiva.

Tenga en cuenta: Para recibir mensajes de texto, su número de teléfono móvil también debe figurar como uno de los números de contacto del sistema de notificación electrónica de su hijo. Si necesita actualizar sus preferencias de contacto, comuníquese con la escuela de su hijo.

2024-25 CALENDAR-AT-A-GLANCE

JULY 2024

S	M	T	W	T	F	S
	1	2	3	4	5	6
7	8	9	10	11	12	13
14	15	16	17	18	19	20
21	22	23	24	25	26	27
28	29	30	31			

AUGUST

S	M	T	W	T	F	S
				1	2	3
4	5	6	7	8	9	10
11	12	13	14	15	16	17
18	19	20	21	22	23	24
25	26	27	28	29	30	31

SEPTEMBER

S	M	T	W	T	F	S
1	2	3	4	5	6	7
8	9	10	11	12	13	14
15	16	17	18	19	20	21
22	23	24	25	26	27	28
29	30					

OCTOBER

S	M	T	W	T	F	S
		1	2	3	4	5
6	7	8	9	10	11	12
13	14	15	16	17	18	19
20	21	22	23	24	25	26
27	28	29	30	31		

NOVEMBER

S	M	T	W	T	F	S
					1	2
3	4	5	6	7	8	9
10	11	12	13	14	15	16
17	18	19	20	21	22	23
24	25	26	27	28	29	30

DECEMBER

S	M	T	W	T	F	S
1	2	3	4	5	6	7
8	9	10	11	12	13	14
15	16	17	18	19	20	21
22	23	24	25	26	27	28
29	30	31				

JANUARY 2025

S	M	T	W	T	F	S
			1	2	3	4
5	6	7	8	9	10	11
12	13	14	15	16	17	18
19	20	21	22	23	24	25
26	27	28	29	30	31	

FEBRUARY

S	M	T	W	T	F	S
						1
2	3	4	5	6	7	8
9	10	11	12	13	14	15
16	17	18	19	20	21	22
23	24	25	26	27	28	

MARCH

S	M	T	W	T	F	S
						1
2	3	4	5	6	7	8
9	10	11	12	13	14	15
16	17	18	19	20	21	22
23	24	25	26	27	28	29
30	31					

APRIL

S	M	T	W	T	F	S
		1	2	3	4	5
6	7	8	9	10	11	12
13	14	15	16	17	18	19
20	21	22	23	24	25	26
27	28	29	30			

MAY

S	M	T	W	T	F	S
				1	2	3
4	5	6	7	8	9	10
11	12	13	14	15	16	17
18	19	20	21	22	23	24
25	26	27	28	29	30	31

JUNE

S	M	T	W	T	F	S
1	2	3	4	5	6	7
8	9	10	11	12	13	14
15	16	17	18	19	20	21
22	23	24	25	26	27	28
29	30					

Quarter 1 = 44 days

Quarter 2 = 43 days

Quarter 3 = 46 days

Quarter 4 = 43 days

Calendar approved January 25, 2024.
Dates subject to change due to inclement weather. Visit our Calendars web page for the most up-to-date information.

Note: Calendar includes 195 contract days for teachers.



CALENDAR KEY

Holiday: July 4; Sept 2; Nov 27-29; Dec 23 – Jan 3; Jan 20; March 31 – April 4; May 26; June 19

New Teacher Academy: Aug 5-9

Combination Teacher Workday/Professional Development (PD) Day: Aug 12, 14, 15, 19 & 20

PD Day: Aug 13 & 16

First Day of School for Students: Aug 21

Reserved for a combination of mandatory training, teacher work time, and division or school-based PD (no school for students): Sept 23; Oct 24; Jan 6; Feb 17; March 17; April 28

End of Quarter: Oct 23; Jan 16; March 27; June 6

Full-Day Teacher Workday (no school for students): Oct 25; Jan 17; March 28; June 9

"Making Connections" Division-wide PD Day (no school for students): Nov 4

Reserved for Parent Conferences (no school for students): Nov 5

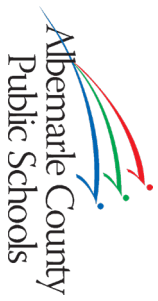
Last Day of School (half-day for students); afternoon reserved for Teacher Workday: June 6

Last Day of Work for Teachers: June 9

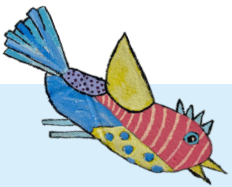
Note: If schools close an unusually high number of days due to inclement weather, there may be remote learning days, or one or more non-student days in the spring may be converted to instructional days.

Approved January 25, 2024

**CONNECT
WITH US!**



k12albemarle.org



Albemarle County Public Schools
401 McIntire Road, 3rd Floor
Charlottesville, VA 22902-4596

NON-PROFIT ORG.
U.S. POSTAGE

PAID

CHARLOTTESVILLE, VA
PERMIT NO. 216

