

# ParentView Self-Guided Tools

Registering to track  
your route with GPS



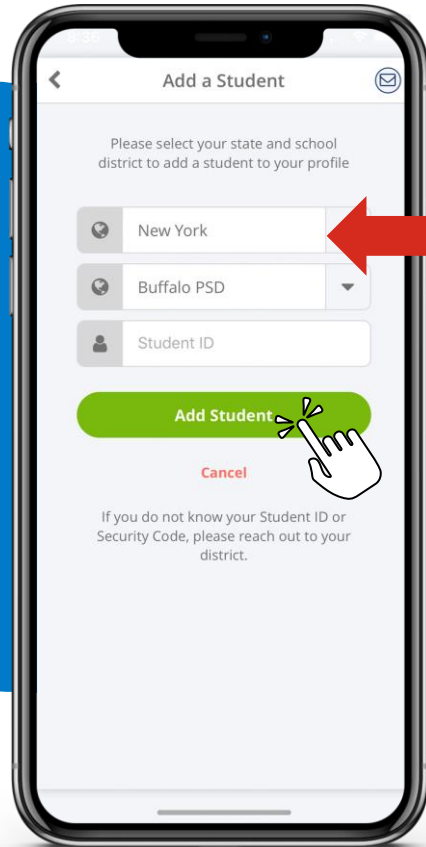
**Step 1:**  
Download app<sup>1</sup>, Register/Confirm  
your account, & Log-In<sup>2</sup>



1. You can also access the app at [web.firstviewapp.com](http://web.firstviewapp.com)
2. Users must enter their First Name, Last Name, Phone Number, Email Address, State, School District, and Choose a Password. By registering for and using a FirstView account, you also consent to our terms of use and our privacy policy.

# ParentView Self-Guided Tools

Registering to track your route



## Step 2: Register

- Select your state and school district from the drop down
- Add your code(s)\*

C5JL



\*If you do not know the code(s) required to add your student, please contact your school district.

# ParentView Self-Guided Tools

## Registering to track your route



### Step 3: Search AM | MID | PM

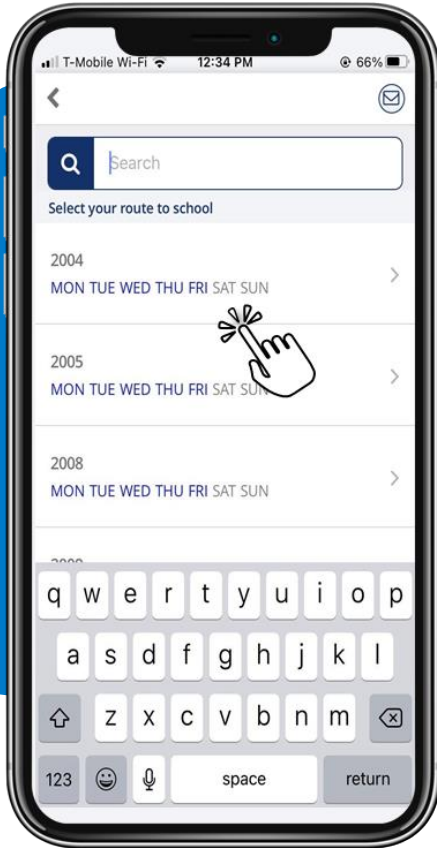
- Search for your student's assigned Route\*.
- You will need to add your morning route, midday, and afternoon route separately



\*If you do not know the code(s) required to add your student, please contact your school district.

# ParentView Self-Guided Tools

Registering to track your route



## Step 4: Add Route

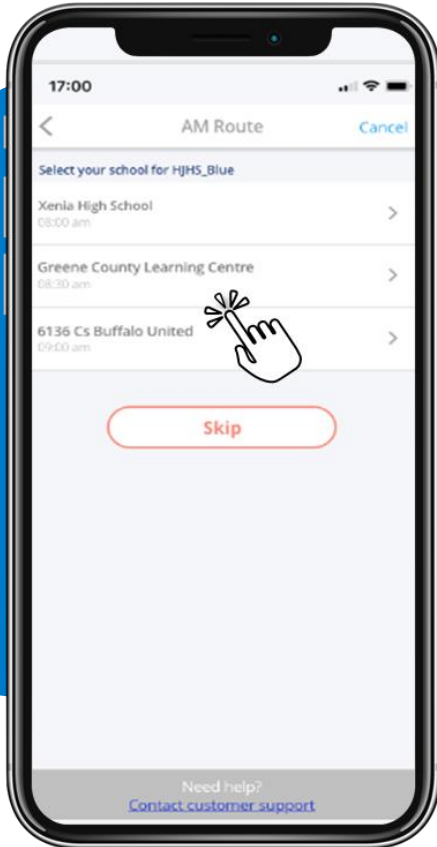
- Search and select for your student's assigned route
- You can see days of the week the route operates in blue



\*If you do not know your student's assigned route, please contact your local First Student Office or your district

# ParentView Self-Guided Tools

Registering to track your route



## Step 5: Add School

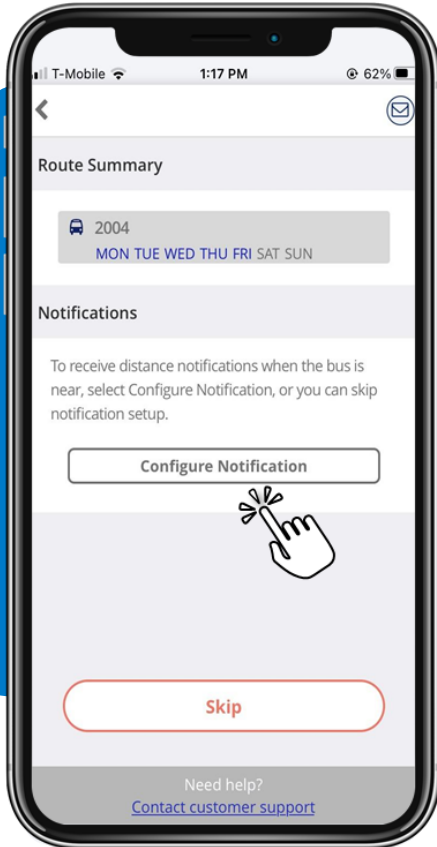
- If applicable, select your student's school to track the bus to/from school
- Or you can skip this step\*



\*If schools are not available to track, you will be automatically redirected to the next registration step. If your school isn't available to select, skip this step

# ParentView Self-Guided Tools

## Registering to track your route



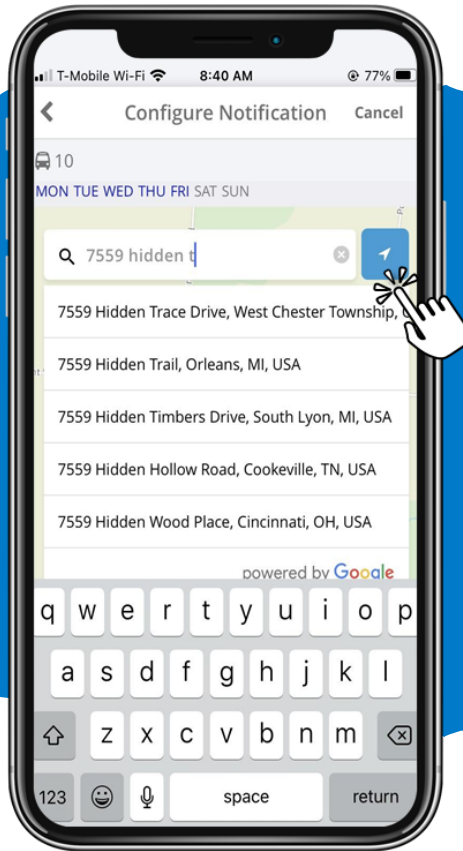
## Step 6: Configure Notification

- Select configure notification to receive an alert when the bus is near your student's stop location
- Skip if you don't want to add a stop location for notifications and just want to track the bus on the map



# ParentView Self-Guided Tools

Registering to track your route



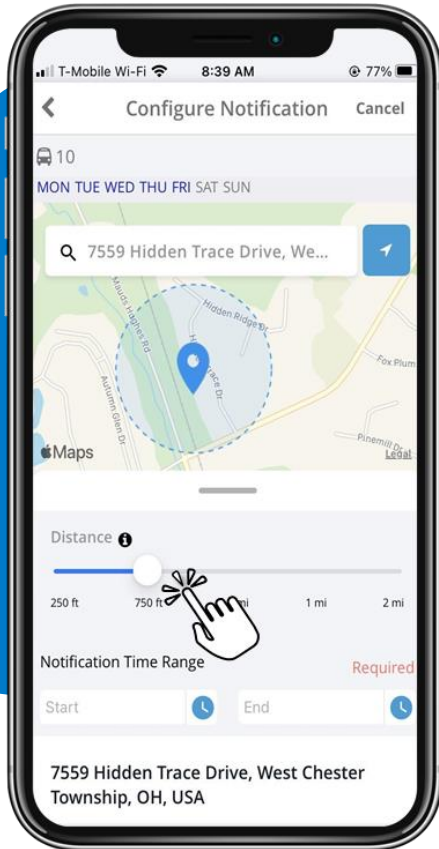
## Step 7: Add Your Stop Location

- Enter and select the address where your student gets on and off the bus
- Or use location services to drop a pin on the map at your current location



# ParentView Self-Guided Tools

Registering to track your route



## Step 8: Create Geofence

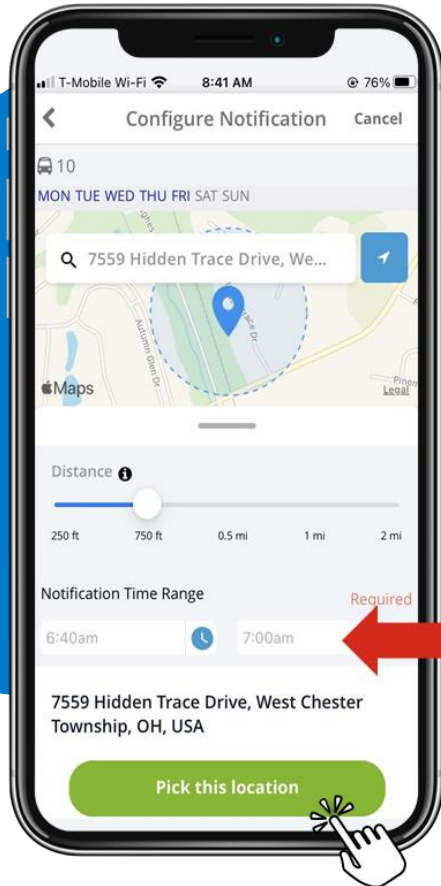
- Use the distance slider to define a radius (geofence) around your stop. When the bus crosses into that radius, you'll get a notification the bus is near





# ParentView Self-Guided Tools

Registering to track your route



## Step 9: Enter Notification Time

- Enter your notification time range, so you're only notified if the bus enters your radius (geofence) around your student's scheduled stop time
- When done, select "Pick this location"



# ParentView Self-Guided Tools

Registering to track your route



## Step 10: Add Additional Routes

Add additional routes to follow

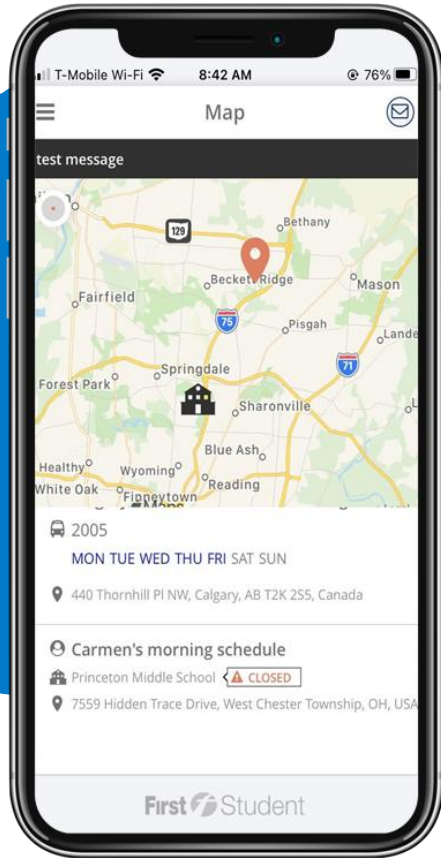
When done adding your student's routes to track for the AM, MID, and/or PM, select Done\*



\*You can also edit your notification (select the edit icon) and/or delete the route and notification completely by selecting the X

# ParentView Self-Guided Tools

Registering to track your route



## Step 11: Start Tracking

- You're all set to track!
- See the bus location on the map in near real-time and get your distance notifications\*



\*You can add and edit notifications, add new students to track, and add additional routes to follow in your Profile