



WheresTheBus APP & SCANNER

BRANDYWINE SCHOOL DISTRICT TRANSPORTATION OFFICE
(302)762-7181 • www.brandywineschools.org/Transportation

INSTRUCTIONS FOR NEW WHERESTHEBUS APP USERS

Families with students who are eligible for transportation can also download the Wheres The Bus app for real-time updates on their bus location. The app can be downloaded on Apple or Android devices and lets families know exactly when their bus will be arriving at their child's bus stop for BOTH morning pick and the



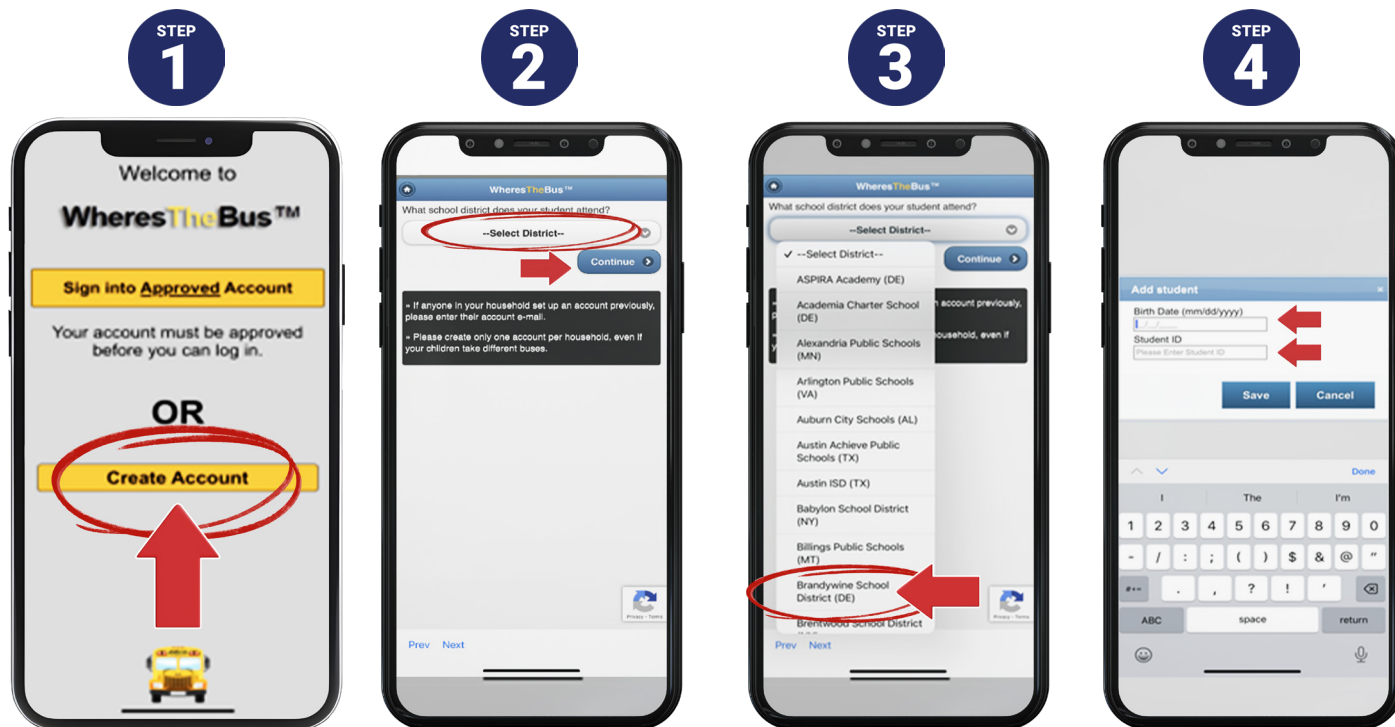
IOS/APPLE USERS

1. Visit the Apple App Store
2. Search for Whers The Bus App
3. Select and download Wheres The Bus App



ANDROID USERS

1. Visit the Google Play App Store
2. Search for Whers The Bus App
3. Select and download Wheres The Bus App



After proper user information is entered you are now able to see your child's bus location.

Wheres The Bus App location information updates every 15 seconds.

Unfortunately, BSD Transportation does not have rights to the Wheres The Bus software. For all questions or concerns about the app please contact Wheres The Bus by email at support@wheresthebus.com



WheresTheBus APP & SCANNER

BRANDYWINE SCHOOL DISTRICT TRANSPORTATION OFFICE

(302)762-7181 • www.brandywineschools.org/Transportation

BUS SCANNER

Brandywine School District buses are equipped with the WheresTheBus Barcode Combo Reader, featuring a fast automatic student ID barcode reader and a keypad backup. This system requires students to enter or scan their student ID upon entering the bus, ensuring consistent identification at all times, whether they have their ID card with them or not. Additionally, parents can receive an immediate push notification when their child boards the bus.



When a student enters a bus, they can:

- Place their barcode ID below the reader
- Manually type their Student ID# into the keypad and click Enter

Once the ID is received, this information is sent in real-time to the driver's tablet on the bus, the dispatch software for transportation, and the WheresTheBus Parent App so the parent will get an update when their student boards the bus.



The Driver will receive a notification on their tablet confirming the receipt of a student scan.

Drivers are notified when students scan on the wrong stop or wrong route. The student's correct assignment is listed, so the driver can notify the student of their assigned bus or stop.



- Records are kept each time a student boards and exits the bus.
- The system ensures that students are arriving at and departing from the correct bus stop.
- Parents can track their student boarding and departing from the bus.

For questions, please contact the Brandywine School District Transportation Office

(302)762-7181 • www.brandywineschools.org/Transportation