

About Audiological Services

The CES audiology professional provides prevention, identification, diagnosis, and evidence-based treatment of hearing, balance, and other auditory disorders for school-aged children. The audiologist works collaboratively with the student's educational team and family, lending a unique expertise that allows them to contribute to the overall success of a student's Individualized Education Program (IEP).

Susan Clarke, M.S., CCC-A

Audiologist

clarkes@cestrumbull.org

CES Audiological Services is located in the CES Special Education facility at 25 Oakview Drive, Trumbull, CT 06611

It is the policy of CES that no person shall be excluded from participation in, denied the benefits of, or otherwise discriminated against under any service or program on account of race, color, religious creed, age, marital or civil union status, national origin, sex, sexual orientation, gender identity or expression, ancestry, residence, veteran status, victim of domestic violence, present or past history of mental disorder, mental retardation, learning disability or physical disability including, but not limited to, blindness, or pregnancy and provides equal access to the Boy Scouts and other designated youth groups. Inquiries regarding CES nondiscrimination policies should be directed to the Associate Executive Director's office, CES, 40 Lindeman Drive Trumbull, CT 06611; 203-365-8831.

About CES

Cooperative Educational Services is a public educational authority pursuant to Connecticut General Statute 10-66 and is one of six Regional Educational Service Centers in the state.

The agency is governed by a Representative Council made up of Board of Education members from the 16 Fairfield County school districts served by CES: Bridgeport, Darien, Easton/Redding/Region 9, Fairfield, Greenwich, Monroe, New Canaan, Norwalk, Ridgefield, Shelton, Stamford, Stratford, Trumbull, Weston, Westport, and Wilton.

The CES main office is located at 40 Lindeman Drive in Trumbull.

Cooperative Educational Services

40 Lindeman Drive

Trumbull, CT 06611

203-365-8840

www.cestrumbull.org/specialeducation

Dr. Mike McGrath

Director of Special Education

203-365-8837

mcgrathm@cestrumbull.org



Audiological Services at CES

Evaluations, Training and Consultations



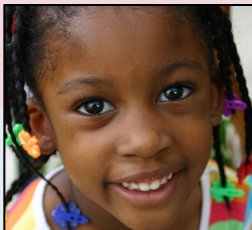
An alternative approach to helping school districts meet students' needs



Facts and Figures

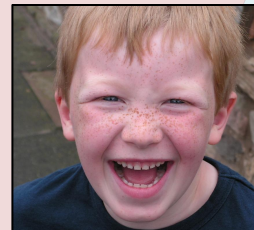
- Approximately 3 in 1,000 babies are born with permanent hearing loss, making hearing loss one of the most common birth defects in America.
- The majority of children with hearing loss are born into families who have little or no experience with hearing loss.
- Almost half the children with hearing loss in the U.S. are from racial/ethnic minority populations.
- Late identification of hearing loss or lack of early intervention services can negatively impact speech and language development, academic achievement, and social-emotional development.
- Approximately 2.5 million (5.4%), of all school-age children have mild or unilateral hearing loss.
- More than a third of these children are projected to fail at least one grade and/or will require additional educational support.
- Children with mild or unilateral hearing loss can benefit from early intervention services. Left undetected, mild or unilateral hearing loss can result in delayed speech and language acquisition, social-emotional or behavioral problems, and lags in academic achievement.

— Source: American Speech-Language-Hearing Association, www.asha.org/uploadedFiles/EHDI-Phase-II-Talking-Points.pdf



Services Provided

- Comprehensive audiological evaluation and reevaluation for children preschool through age 21 conducted at our Oakview Drive audiology suite.
- Central Auditory Processing Evaluation.
- Collaboration with educators regarding communication management, educational implications of hearing loss, educational programming, classroom acoustics, and large-area amplification systems for children with hearing loss.
- Consultation about accessibility for persons with hearing loss in public and private buildings, programs, and services.
- Participation in the Planning and Placement Team meeting.
- Classroom observation to assist in determining a child's individual audiological needs.
- Training for school personnel and families regarding the use and benefit of personal hearing aids, personal FM systems and classroom amplification systems.
- Maintenance and troubleshooting of minor equipment problems.
- Provision of backup equipment and components including custom ear molds.



The CES Approach

Cooperative Educational Services (CES) audiology is a contract service offering a qualified and dedicated audiologist to districts at reasonable costs. CES can tailor its services to best fit the needs of clients, and for far less money than districts would be forced to pay for independent services. CES places its audiologist throughout the region to districts seeking effective solutions to meeting the educational needs of their students. Our audiologist is expertly trained to work with students, teachers, and families to understand the needs of each child they serve. CES draws upon a field of enthusiastic and educated professionals with cutting-edge knowledge of effective practices.

Benefits of the service

- Service rates that are more cost-effective than independent contractors.
- Placement services that can be tailored to specific commitment needs of districts.
- High-quality, well-prepared professional who adheres to CES's rigorous expectations for special education and related services.
- CES guarantees that the CES audiologist will provide excellent service to clients.

