

Cohasset High School

School Profile 2024-2025



Our Community:

Cohasset is a small community that covers a nine square mile area and is home to approximately 8,500 residents. It is a charming seaside community in close proximity to Boston with various modes of accessible transport, such as the commuter railway and ferry boats. All these qualities make it a convenient location to both live and visit.

Our Mission:

Cohasset Public Schools places students first. We provide an optimal teaching and learning environment by cultivating empathy, global citizenship, agency, inclusivity, and community engagement to empower students to realize continuous personal growth and achievement.

Our Vision:

Empower students to improve communities.

School Enrollment:

Grade 9 – 85

Grade 10 – 94

Grade 11 – 107

Grade 12 – 99

Cohasset High School
143 Pond Street
Cohasset, MA 02025
781.383.6100
www.cohassetk12.org

Brian Scott
Principal

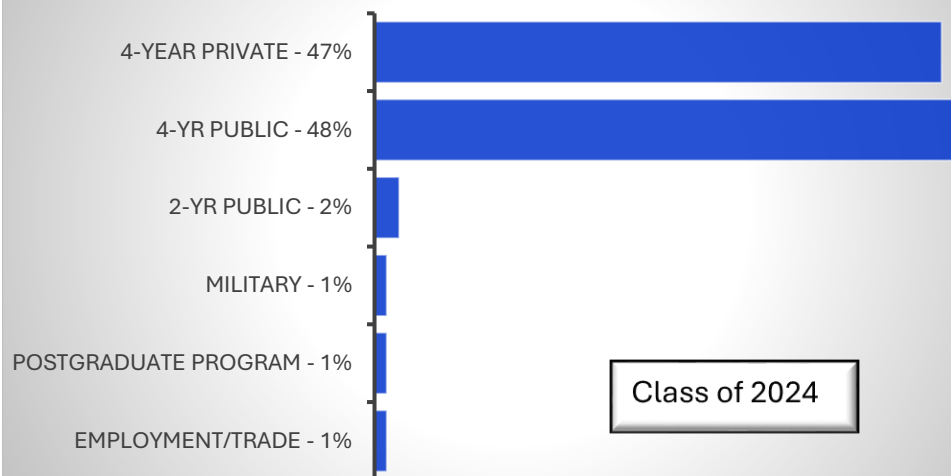
Tara Noyes
Assistant Principal

Counselors

Laura Struzziery
Kevin McGowan
Allison Battista

CEEB: 220635

Post-Secondary Plans



Block Schedule Information:

Cohasset High School utilizes a block schedule format. Most academic courses are one semester in length. Courses meet on a rotating basis four out of five days per week, and therefore are equivalent to full year courses at a traditional high school. There are some exceptions as Grades 9 and 10 English as well as AP courses run a full year. The block schedule allows students to take more courses on average than in a traditional schedule and provides them with the opportunity to move among levels based on their academic development. As a result of the block schedule, students finish a majority of the core curriculum during freshman and sophomore years. This flexibility allows them the opportunity to individualize their schedule and pursue personal interests and academic goals. Due to the nature of the block schedule, the maximum amount of AP courses taken by a student in any given year is four. It is also important to note that students may not take every discipline during junior and/or senior year due to interest, availability, and or individual schedule customization.

COURSE LEGEND: WEIGHTED COURSES

CP—College Preparatory AC—Accelerated AP—Advanced Placement

Credits are awarded according to the length of the course

1 Term = 2.5 2 Terms = 5.0 4 Terms = 10.0

Students are required to earn a minimum of 175.0 credits to graduate.

English	Levels	Science	Levels	World Language	Levels
English 9	CP, AC	Introduction to Chemistry	AC	French II	CP/AC
English 10	CP, AC	Introduction to Physics	AC	French III	CP/AC
English 11	CP, AC	Biology*	CP, AC, AP	French IV	AC
English 12	CP, AC	Chemistry*	AC, AP	French V	AC
AP Language & Comp.	AP	Chemistry in the Community	CP	Spanish I	CP
AP Literature & Comp.	AP	Physics*	AC, AP	Spanish II	CP, AC
Creative Writing	CP, AC	Anatomy & Physiology	AC	Spanish III	CP, AC
		Environmental Science	AC	Spanish IV	AC
		Marine Science	CP	Spanish V	AC
		Biodiversity & Ecology	CP	Spanish Language & Culture	AP
		Genetics & Biotechnology	AC		
Math	Levels	Social Studies	Levels	Fine Arts	Levels
Algebra I	CP	World History	CP, AC	Advanced Chorus	AC
Geometry	CP, AC	US History I & II	CP, AC, AP	Art Major	AC
Algebra II	CP, AC	Introduction to Law	CP, AC	Jazz Ensemble	AC
Integrated Math	CP	Holocaust Human Behavior	CP, AC	Portfolio Art	AC
Trigonometry	CP, AC	Economics	CP, AC	Advanced Band	AC
Pre-Calculus	CP, AC	Conspiracy Theory	CP, AC		
Calculus	AP	European History	AP		
Statistics	CP, AP	Psychology	CP, AC, AP		
Principles of Finance	CP	Sociology	CP, AC		
Differential Calculus	AC	Global Studies	CP, AC		
Economics	CP, AC	Macroeconomics	AP		
Accounting	AC	Microeconomics	AP		
				Computer Science	Levels
				Intro to Computer Science	AC
				<i>*Indicates AP Courses that are not offered every year.</i>	

CLASS RANK AND GRADE POINT AVERAGE INFORMATION

The grade point average is based on a **weighted 5.0 system** and is calculated at the end of every year from Grade 9 through Grade 12. This information is readily available, and students are advised to check their GPA periodically to improve upon past performance and to assess their potential college admission. Grade point average is computed according to course and grade level. The three levels of difficulty are: Advanced Placement, Accelerated, and College Preparatory. Non-Academic electives have no weight and therefore are not included in Grade Point Average. Cohasset High School does not maintain class rank.

COURSE WEIGHTING SCALE

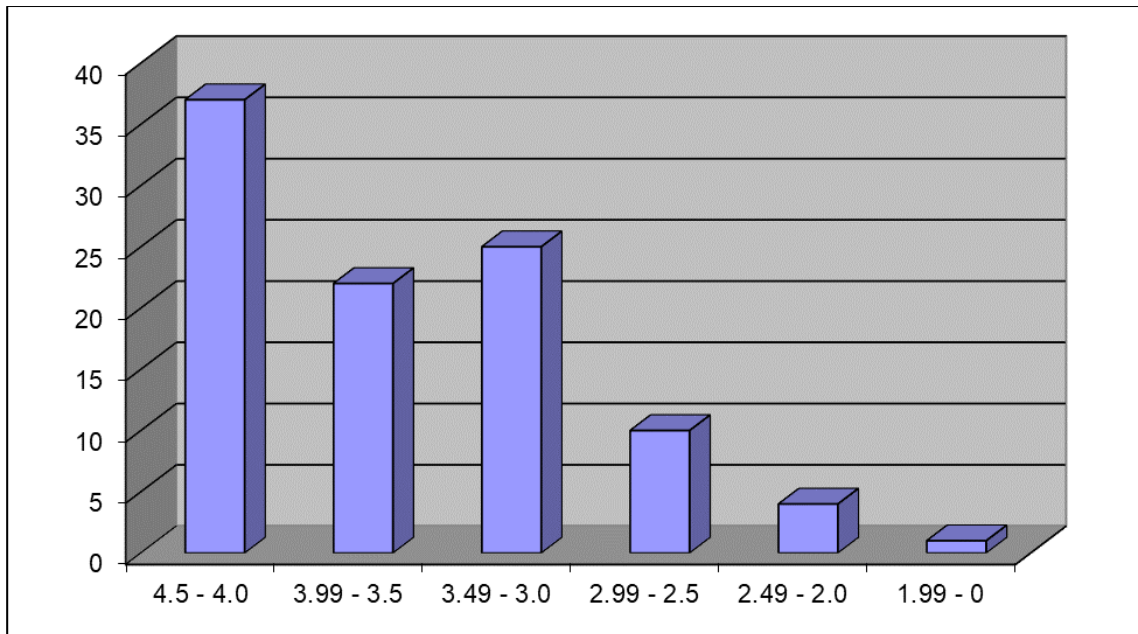
	A	A-	B+	B	B-	C+	C	C-	D+	D	D-
Advanced Placement	5.00	4.67	4.33	4.00	3.67	3.33	3.00	2.67	2.33	2.00	1.67
Accelerated	4.33	4.00	3.67	3.33	3.00	2.67	2.33	2.00	1.67	1.33	1.00
College Preparatory	4.00	3.67	3.33	3.00	2.67	2.33	2.00	1.67	1.33	1.00	0.67

GRADING SYSTEM

A = 93-100	B - = 80-82	D+ = 67-69
A - = 90-92	C+ = 77-79	D = 63-66
B+ = 87-89	C = 73-76	D - = 60-62
B = 83-86	C - = 70-72	F = Below 60

This chart profiles the Class of 2025 at the end of Grade 11.

GPA is calculated for all students who have been at Cohasset High School for two semesters or more. Only grades earned at CHS are included.



GRADUATION REQUIREMENTS

A student needs 175 credits to be eligible for a diploma and must complete the equivalent of six major courses (12 terms of study) per year. In addition, students must meet the following:

- Each student must achieve a passing grade in English each year for four years, and accrue at least thirty (30) credits;
- Each student must achieve a passing grade in four courses of mathematics, accruing at least twenty (20) credits. Of these four courses, one must be Algebra II;
- Each student must achieve a passing grade in four courses of science, accruing at least seventeen and one half (17.5) credits;
- Each student must achieve a passing grade in four courses of social studies, accruing at least twenty (20) credits (note: AP US History could count as both US I and US II). Of these four courses, students must pass World History or AP European History, and United States History I and II or AP U.S. History.
- Each student must achieve a passing grade in the equivalent of three courses in World Language, accruing the equivalent of fifteen (15) credits;
- Each student must achieve a passing grade in the equivalent of three quarters of physical education/wellness and two quarters of health education, accruing at least twelve and one half (12.5) credits;
- Each student must achieve a passing grade in three courses in visual and performing arts, accruing at least seven and one half (7.5) credits.

ADVANCED PLACEMENT GRADE DISTRIBUTION BY EXAM

Tests with four (4) or more test takers in the 2023-2024 Academic Year

Subject	% of test takers earning a score of 3 or higher
Biology	100%
Calculus AB	80%
Chemistry	88%
Computer Science A	100%
English Language and Composition	67%
English Literature and Composition	76%
European History	86%
Macroeconomics	82%
Microeconomics	87%
Psychology	8%
Spanish Language and Culture	84%
Statistics	90%
United States History	100%

COLLEGE ACCEPTANCES – CLASS OF 2024

Aberystwyth University	University of Florida	Morehouse College	University of South Carolina
Alabama A & M University	Fordham University	New England Institute of Technology	University of Southern Maine
The American University of Paris	University of Georgia	University of New England	Southern Methodist University
Arizona State University	Gettysburg College	University of New Hampshire	Spelman College
University of Arizona	Goldsmiths University of London	University of New Haven	Springfield College
Auburn University	Hampshire College	New York School of Interior Design	St. John's University-New York
Bates College	High Point University	New York University	St. Lawrence University
Bentley University	Hobart William Smith Colleges	North Carolina A & T State University	Stonehill College
Boston College	College of the Holy Cross	University of North Carolina at Asheville	Stony Brook University
Brandeis University	Howard University	University of North Carolina-Chapel Hill	Suffolk University
Bridgewater College	Indiana University-Bloomington	University of North Carolina-Wilmington	SUNY College
Bridgewater State University	Indiana University Indianapolis	Northeastern University	Syracuse University
Bryant University	University of Iowa	Northeastern University London	The University of Tampa
Bucknell University	Ithaca College	Norwich University	The University of Tennessee
Cal Poly	James Madison University	Pennsylvania State University	Texas Christian University
University of California-Santa Barbara	Johnson & Wales University	University of Pittsburgh	The George Washington University
Champlain College	University of Kansas	Plymouth State University	The New School
College of Charleston	Keene State College	Pratt Institute-Main	Ohio State University
Clark Atlanta University	Kenyon College	Princeton University	University of Toronto
Clark University	Lafayette College	Providence College	Trinity College
Clemson University	Lake Forest College	Purdue University	Trinity College Dublin
Coastal Carolina University	Lehigh University	Quinnipiac University	Tufts University
Colby-Sawyer College	Louisiana State University	Regis College	Tulane University of Louisiana
University of Colorado Boulder	Loyola Marymount University	Rensselaer Polytechnic Institute	Union College
Colorado College	Loyola University Chicago	University of Rhode Island	United States Coast Guard Academy
Colorado State University	Loyola University Maryland	University of Richmond	University of Brighton
Connecticut College	University of Maine	Rochester Institute of Technology	University of East London
University of Connecticut	Marist College	University of Rochester	University of Edinburgh
Curry College	Marquette University	Roger Williams University	University of Oregon
Dartmouth College	University of Maryland-Baltimore	Rollins College	University of St Andrews
University of Delaware	University of Maryland-College Park	Sacred Heart University	University of Stirling
University of Denver	Massachusetts College of Art and Design	Saint Anselm College	University of Vermont
DePaul University	University of Massachusetts-Dartmouth	Saint Michael's College	Villanova University
Design Institute of San Diego	Massachusetts Maritime Academy	Salem State University	Virginia Tech
Drexel University	University of Massachusetts-Amherst	Salve Regina University	Wake Forest University
Eastern Nazarene College	University of Massachusetts-Boston	San Diego State University	University of Washington-Seattle
Eckerd College	University of Massachusetts-Lowell	University of San Diego	University of Waterloo
Elon University	Merrimack College	Santa Clara University	Wellesley College
Emmanuel College	Miami University-Oxford	Sarah Lawrence College	Wentworth Institute of Technology
Emory University	University of Miami	Savannah College of Art and Design	Wheaton College
Endicott College	Michigan State University	School of Visual Arts	William & Mary
Fairfield University	University of Michigan-Ann Arbor	The University of the South	University of Wisconsin-Madison
Fisher College	Middlebury College	Simmons University	Xavier University of Louisiana
Fitchburg State University	Montana State University	Skidmore College	