

A large, light-brown rectangular sign with a dark brown border stands in a grassy field. The sign features a central banner with a blue background, a yellow sun, and white clouds. The word 'SUMMER' is written in large, bold, green letters, and 'PROGRAMMING' is written in smaller, black, uppercase letters below it. Below the banner, a red rounded rectangle contains the dates 'June 24 - July 19, 2024' in white, italicized text. The background of the entire image is a vibrant, cartoon-style landscape with a light blue sky, white clouds, green trees, and a campsite with a tent and a campfire.

SUMMER PROGRAMMING

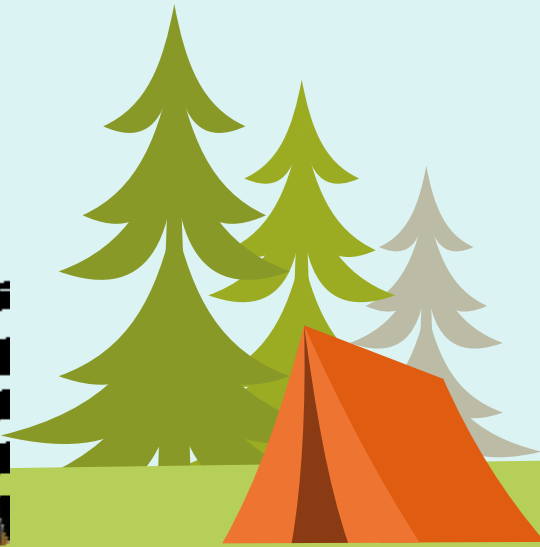
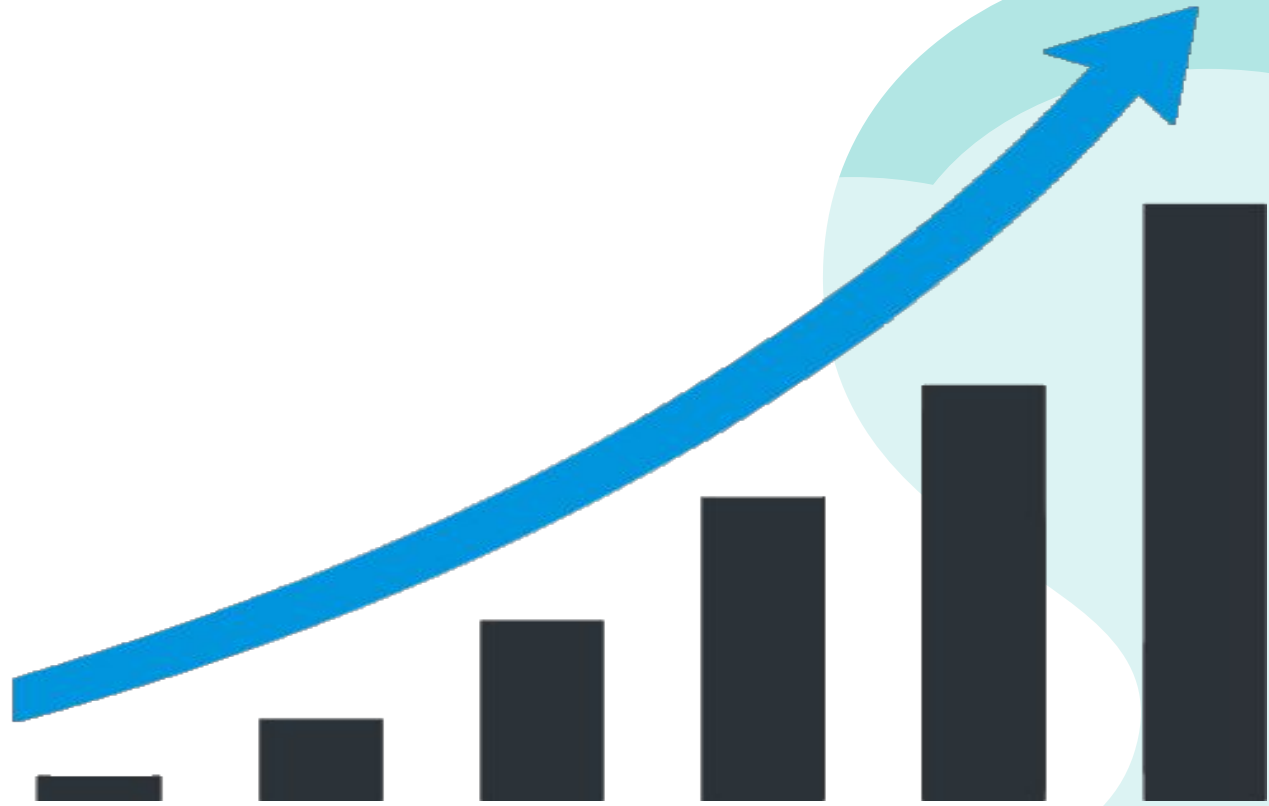
June 24 - July 19, 2024



Focus

To increase English language proficiency (Spanish language proficiency for DLI students) by integrating **oral**, written and reading skills across content areas.

A LOT CAN HAPPEN IN 19 DAYS!



Summer Language Academy 2024

Instructional Hours

8:30 AM - 2:00 PM

Students

144

Classes

- Two of each (1st-3rd)
- One of each (4th-6th)
- Three DLI Classes (1st-3rd)

Meals

Breakfast & Lunch served free for all (ELO-P funding)

After Care

Right at School on campus until 5:30, free of charge to students

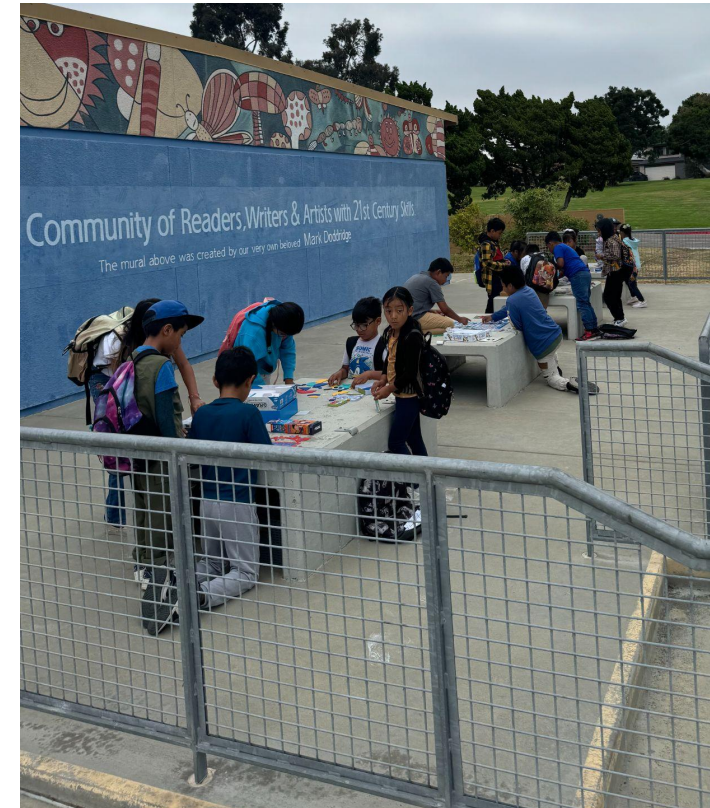
Instructional Staff

- 1 Site Administrator
- 12 Classroom Teachers
- 9 Instructional Assistants
- Reader's Theatre & Art Teacher, P.E. Teacher, Library Media Assistant, 3 Noon Supervisors



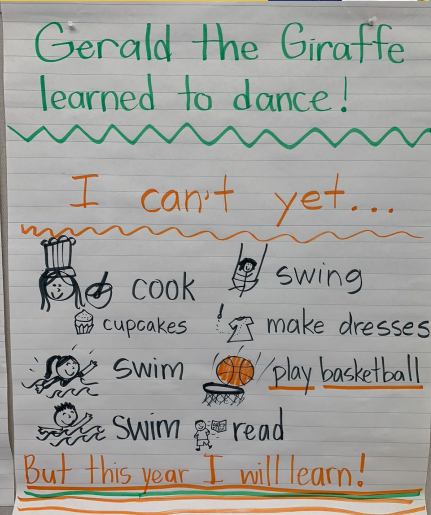
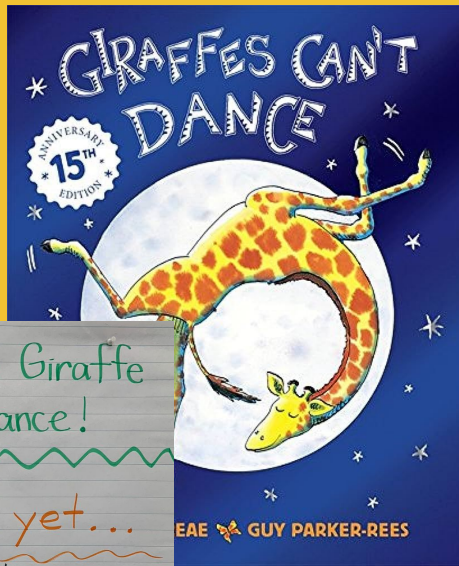
It takes a village!

7:30 - 8:30 Supervision
Thanks Educational Services Team!

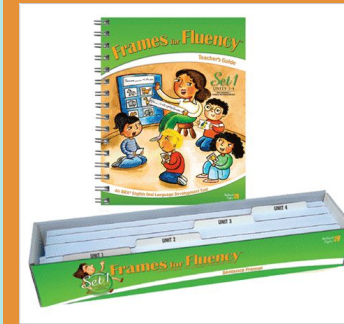
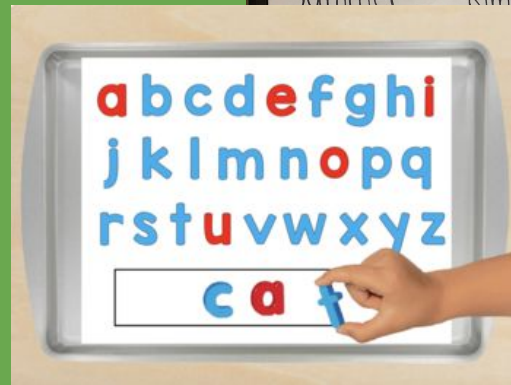
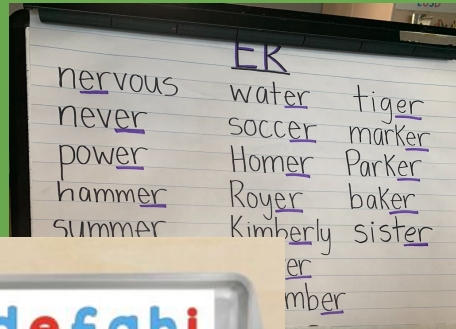


LitCamp

LitCamp is a summer literacy program that combines reading and writing lessons through an engaging and interactive summer camp approach. Lessons revolve around one piece of children's literature.

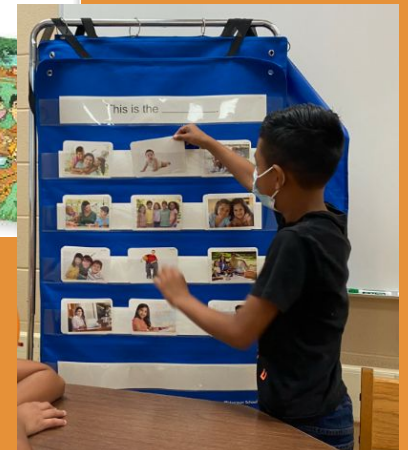


UFLI Foundations is an explicit and systematic program that teaches students the foundational skills necessary for proficient reading. It follows a carefully developed scope and sequence designed to ensure that students systematically acquire each skill needed and learn to apply each skill with automaticity and confidence.



Ballard & Tighe

Frames for Fluency is an oral language development tool designed to increase oral fluency of English learners. The sentence frames provide English learners with targeted scaffolds to achieve grammatical accuracy and oral fluency in a meaningful and authentic context through the use of thematic vocabulary.

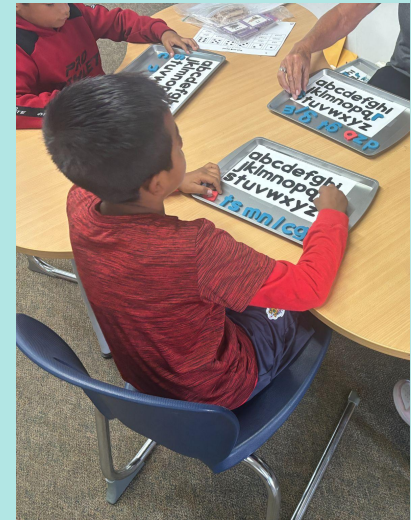


CURRICULUM

86% of students assessed at the end of the program showed growth in early foundational Literacy skills.

Main Areas of Growth

- Identification of Letter Names and Sounds
- Blending
 - Consonant Vowel Consonant Words (“c-a-t”)
 - Multisyllabic Words (“unless” and “admire”)
 - Words with R-controlled vowels (“dirt” and “surf”)



Culminating Activities



Reader's Theatre Performance
Great use of AI!



Summer Fun
"Water Day Rotations"



A "fancy" breakfast to practice
mealtime vocabulary

JOY.



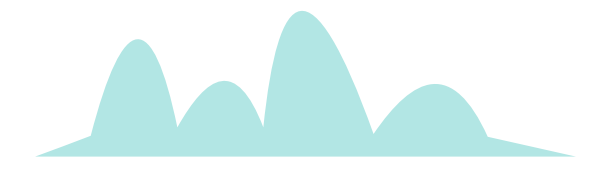
NOW WHAT?

- ★ **Assessment data** will be provided to teachers and MTSS ToSA's to use for further support and instruction.
- ★ **Anecdotal notes** have been entered in Branching Minds for this year's teacher to review.

IDEA FOR NEXT YEAR:

- ★ Create **Language Development assessments** to match the instruction and language goals in the Frames for Fluency curriculum.





Extended School Year (ESY)

2024

ESY Focus

To supports students with special needs in maintaining their skills to minimize regression & to support their recoupment of skills after the summer break.

ESY WEBSITE

<https://sites.google.com/eusd.net/eusdesy2024/home>



Extended School Year 2024

Instructional Hours

8:15 AM - 11:45 AM

Staff Hours

Teachers & Services

7:45-12:00

Instructional Aides

8:00-12:00

Summer Olympics

Thursday, June 18

Students

65

Staff

- 8 Teachers
- 36 IAs
- Speech, OT, APE, & TRAC
- School Nurse
- Behavior Assistant

Meals - Free
breakfast & lunch



Curriculum/Collaboration

Student IEP Goals

- Case managers and related service providers provide input prior to ESY on essential skill areas that require maintenance to prevent regression
- ESY teachers and ESY related service providers utilize adapted and research based curriculum to target areas of need.
- At the end of ESY, teachers and related service providers input progress notes for ALL students to communicate to the school year team the progress each student has made on identified goal areas.



Related Services

All classes received weekly sessions with the related services providers aligned to their IEP goals including;

- Speech & Language
- Occupational Therapy
- Adaptive PE

In addition, all classes received TRAC lessons supporting social-emotional learning.



Inclusion Opportunities



READING BUDDIES

ESY & SLA teachers collaborated to provide weekly reading buddy activities, where SLA students practiced their oral reading skills and ESY students practiced their social skills.



Inclusion Opportunities



LIBRARY

Librarian, Breon Gonzalez, welcomed ESY & SLA students to her daily read aloud and language activities, and welcomed all to the open library at lunch recess.



Culminating Event

ESY Annual Olympics

- Held every year in honor of past EUSD APE teacher, Lori Miller, who started the event 24 years ago.
- Invited Families and friends to join! Students from SLA joined to cheer on the Olympic athletes during the opening ceremony.
- Invited community media outlets to share in the festivities - published article in the Encinitas Advocate



ESY Annual Olympics



Thank You for supporting ESY!



QUESTIONS?