

# Safety. Growth. Preparing all students for their futures.

A school construction bond will be on the Nov. 5, 2024, ballot to continue the district's commitment to update aging school buildings with schools built to today's safety standards, equipped to prepare all students for their futures.



**BOND ELECTION NOV. 5, 2024**



**BUILT IN 1992**

## Glenwood Elementary School

- Modernization and expansion
- Classrooms do not have doors
- Roofing, heating, ventilation, plumbing and fire protection systems are failing



**BUILT IN 1992**

## Skyline Elementary School

- Modernization and expansion
- Classrooms do not have doors
- Roofing, heating, ventilation, plumbing and fire protection systems are failing



**BUILT IN 1961**

## Lake Stevens Middle School

- Modernization and expansion
- Heating, ventilation, plumbing and fire protection systems are failing
- Career and Technical Education classrooms are not current



## NEW!

- New elementary school
- Secondary Innovative Learning Center
- District central kitchen



## Special Education classrooms and support spaces

- Improvements at eight schools
- Modeled after spaces at our newest schools



## Updated fields and new gyms for school and community use

- Artificial turf and lights at Lake Stevens Middle School
- Field improvements and lights at North Lake Middle School
- New gymnasiums at five schools

## Why a bond?

The 2024 Construction Bond replaces the fully-paid bond that our community approved in 2005 to address aging facilities, modernize schools, and provide safety updates. The 2024 bond will continue the work of the expiring bond to ensure our schools meet the needs of all of our students and employees.

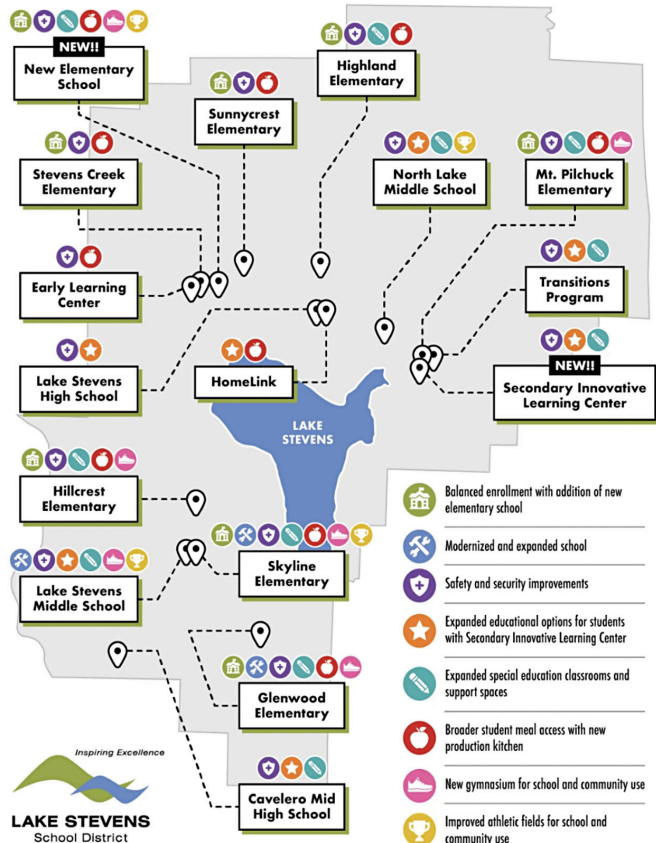
Washington state does not provide funding for school construction projects, which is why districts like ours rely on bonds. A bond requires 60% approval from our community to pass.

## What will the bond cost?

The proposed \$314 million school construction bond would fund improvements across all schools with a slightly increased cost to the average Lake Stevens homeowner — approximately \$29 per month or \$350 per year. This is an investment of about \$1 a day for a home valued at \$625,000, the median assessed value in our district as determined by Snohomish County. The projects maximize approximately \$60 million in state construction assistance funds to minimize the costs to our taxpayers.

The proposed bond would fund essential updates across the district and **replaces the bond** that our community approved in 2005.

## 2024 SCHOOL CONSTRUCTION REPLACEMENT BOND



## Enhanced safety and security

Safety at nine school campuses will be enhanced with fencing, secure receptions and electronic locks on portable classrooms — similar to Lake Stevens High School and Stevens Creek Elementary School.



## Planning for growth

More than 30 portables currently serve as temporary classrooms for more than 800 elementary students. An additional 14 are used for music, PE and support services. Building, modernizing, and expanding schools will provide permanent classroom spaces for current and future students. Many middle school students are also taught in portables.



## Replacing failing systems

In January, frozen pipes burst at Glenwood and Skyline Elementary Schools, causing extensive water damage in classrooms — as seen in this photo. Building systems, such as roofing, heating, ventilation, plumbing, and fire protection, are approaching the end of their usable life.



## New gyms at five schools

New gymnasiums at Glenwood, Hillcrest, Mt. Pilchuck and Skyline Elementary Schools will accommodate all students, providing dedicated spaces for PE and lunch, and enhancing scheduling flexibility and recreational opportunities. The existing gyms are insufficient for assemblies and other school activities. Lake Stevens Middle School will also have a new gym as part of its modernization and expansion.



See what else the replacement Construction Bond will fund at [www.lkstevens.wednet.edu/bond](http://www.lkstevens.wednet.edu/bond)

