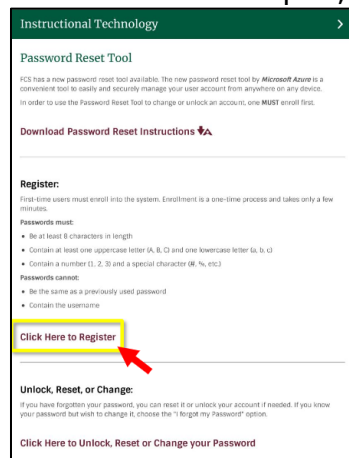


iPad Password Reset Instructions

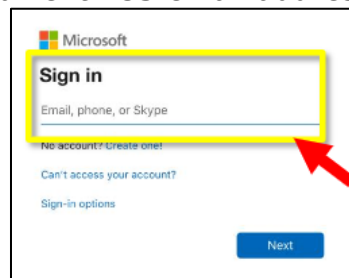
Step 1. Enroll in the password reset tool



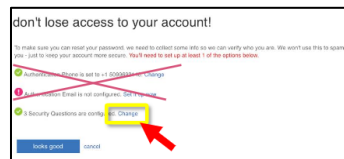
- From the home screen, click on the Password Reset tool -
- With the Password Reset Tool open, click "Click Here to Register."



- Enter your current FCS email address and password, i.e. studentid@fcstu.org.



- Add security questions by clicking "Change" next to Security Questions are configure. **Important:** Do not select "Authentication Phone is set to ..." or "Authentication Email is not configured..."



- Once you have completed your questions & answers, click "Save Answers."

Please select questions to answer below. Your admin requires you to set up 3 questions, and answers must be at least 3 characters long.

Security question 1
What school did you attend for sixth grade?
[text input field]
[password input field] [Select a new question](#)

Security question 2
What is your favorite food?
[text input field]
[password input field] [Select a new question](#)

Security question 3
What was the name of your first pet? [dropdown menu]
Rover [clear] [checkmark]

save answers [red arrow pointing to button]
back

- After completing one or more verification processes, click "Looks good" or "Finish."

don't lose access to your account!

To make sure you can reset your password, we need to collect some info so we can verify who you are. We won't use this to spam you - just to keep your account more secure. **You'll need to set up at least 1 of the options below.**

- ✓ Authentication Phone is set to +1 5099693140. [Change](#)
- ✗ Authentication Email is not configured. [Set it up now](#)
- ✓ 3 Security Questions are configured. [Change](#)

looks good [red arrow pointing to button] [cancel](#)

Step 2. Change your password from the tool

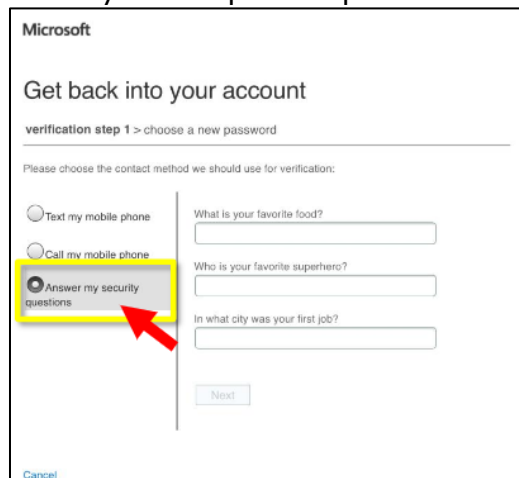


- From the home screen, click on the Password Reset tool -
- With the Password Reset Tool open, click "Click Here to Unlock, Reset or Change your Password."

- Enter your current FCS email address and password, i.e. studentid@fctu.org. Click "Next."

- Select "I forgot my password."

- Select "Answer my security questions." **Important:** These are the questions/answers you setup in Step 1. Click "Next."



Microsoft

Get back into your account

verification step 1 > choose a new password

Please choose the contact method we should use for verification:

Text my mobile phone

Call my mobile phone

Answer my security questions

What is your favorite food?

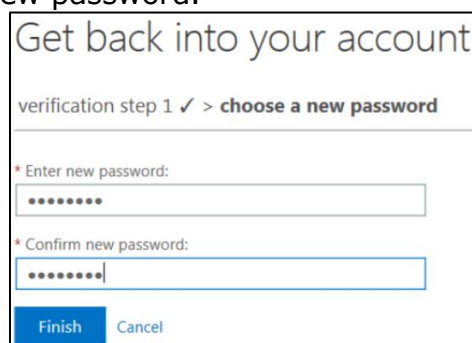
Who is your favorite superhero?

In what city was your first job?

Next

Cancel

- Enter your new password.



Get back into your account

verification step 1 ✓ > choose a new password

* Enter new password:

* Confirm new password:

Finish Cancel

Important: Password requirements are

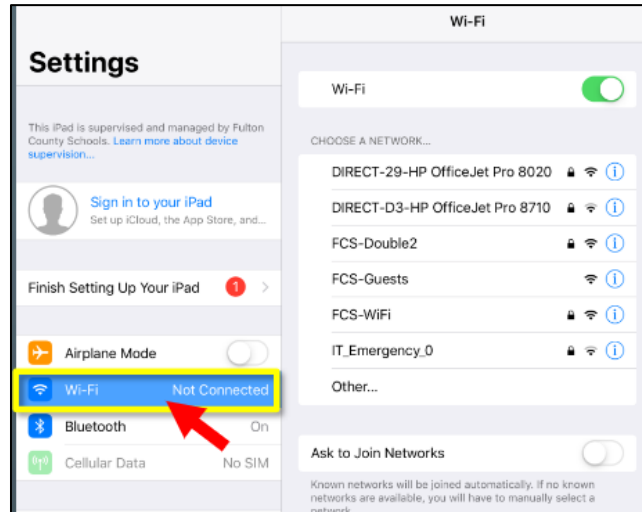
- At least 9 characters long and contain three of the following:
- At least 1 uppercase letter (A, B,C)
- At least 1 lowercase letter (a, b, c)
- At least 1 number (1, 2, 3)
- At least 1 special character (#, %,etc)
 - Cannot be the same as a previously used password
 - Cannot contain the username

If you go through this process and it appears to hang or displays an error; it could mean that your network connection to FCS is bad or off-line. Please contact the FCS Service Desk (470-254-4357) for assistance.

Step 3. Update the wi-fi on your ipad



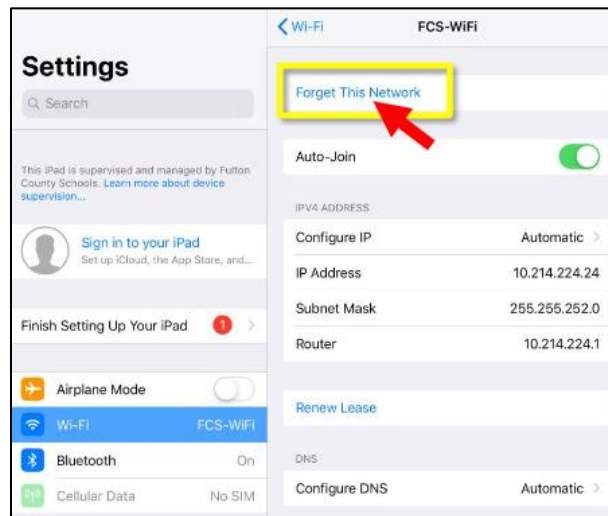
- From the home screen, click "Settings"
- Click "Wi-Fi."



- Next to "FCS-WiFi", click the blue "i."



- Click "Forget This Network."



- Click "Forget."



Important: If you are changing your password while on the FCS-Wifi, proceed to the next steps; otherwise stop here.

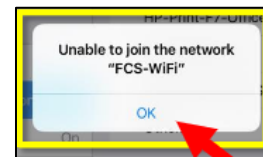
- Click "FCS-WiFi" again.



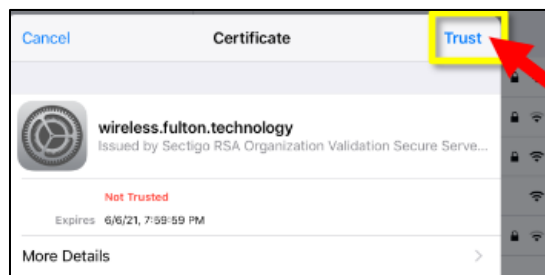
- Enter your FCS credentials. At username, enter fcboestu\(\Userid)\. Do not use "/" or "\". It must be a "\\".



Important: If your username and password is not accepted. You will see this message. Click "OK" and try again. If you continue to have trouble. Your account is either locked or your password is incorrect.



- Click "Trust."



- You should see a check mark next to FCS-WiFi.

