

## About Oakview Transition Program

The Oakview Transition Program (OTP) is a regional special education program for students aged 18-21 with developmental disabilities, including Autism Spectrum Disorders and Intellectual Disabilities. Students in this program benefit from an individualized transition program designed to prepare them for life after high school. Students are grouped homogeneously by social-emotional stages.

### Margo Sheldon

Program Administrator

203-365-8877

sheldonm@cestrumbull.org

www.cestrumbull.org/tlc

## About C.E.S.

Cooperative Educational Services is a public educational authority pursuant to Connecticut General Statute 10-66 and is one of six Regional Educational Service Centers in the state. The agency is governed by a Representative Council made up of Board of Education members from the 16 Fairfield County school districts served by CES: Bridgeport, Darien, Easton/Redding/Region 9, Fairfield, Greenwich, Monroe, New Canaan, Norwalk, Ridgefield, Shelton, Stamford, Stratford, Trumbull, Weston, Westport, and Wilton.

The CES main office is located at 40 Lindeman Drive in Trumbull.

### Cooperative Educational Services

40 Lindeman Drive

Trumbull, CT 06611

203-365-8840

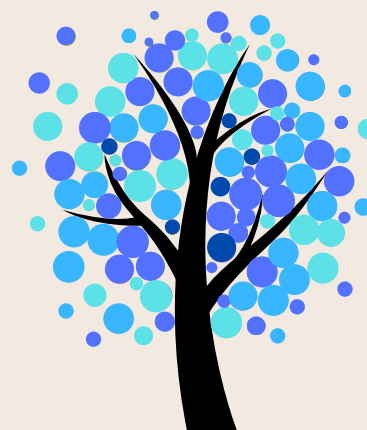
www.cestrumbull.org/specialeducation

### Dr. Mike McGrath

Director of Special Education

203-365-8837

mcgrathm@cestrumbull.org



## OAKVIEW TRANSITION PROGRAM

A Cooperative Educational Services School

An alternative approach to helping meet students' transition needs



# Program Highlights

## Vocational and Post-Secondary Training

Students participate in work-training experiences in the community to build upon their skills and explore their interests. Work skills are evaluated and analyzed to determine employment goals.

## Independent Living

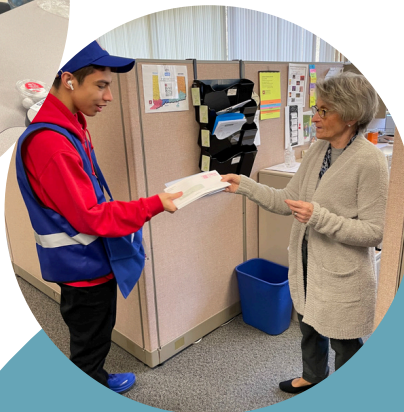
Students acquire skills to independently participate in daily-living activities. Hands-on experiences enhance real-life instruction and self-sufficiency. Instructional emphasis is on self-determination, decision-making, personal care, and domestic living skills.

## Community Participation

Functional curriculum skills are transferred to community environments through money management and budgeting skills. Students' social skills are enriched through integrated community recreation. Students receive travel training in the community to assist in accessing the community.

## Communication and Socialization

Practical application of communication and language skills enhances social development throughout the students' day and across environments. Social skills development is approached through the analysis of the communicative intent and strategies of student behavior, and teaching alternative coping techniques.



# Program Overview

The Oakview Transition Program is a specialized program for students aged 18-22 with developmental disabilities, offering an individualized transition program to prepare them for life after high school. The program emphasizes community-based vocational training, volunteering, and social/recreational experiences to build confidence, independence, and appropriate work skills. The program also enhances social and personal management skills through structured community and school-based environments that incorporate functional academics.

## Program Components

Self-Advocacy/Self-Determination Vocational Training Experiences

Communication/Language Skills Personal Management Skills

Social Skills Development

Interpersonal Relationships

Functional Academic Skills

Travel Skills

Transition Planning Activities Recreation and Leisure Activities

Community Service Learning Projects Technology/Computer Skills

Speech Language Therapy Occupational and Physical Therapy Nursing

Individual and Group Counseling BCBA/Behavioral Support Services



It is the policy of CES that no person shall be excluded from participation in, denied the benefits of, or otherwise discriminated against under any service or program on account of race, color, religious creed, age, marital or civil union status, national origin, sex, sexual orientation, gender identity or expression, ancestry, residence, veteran status, victim of domestic violence, present or past history of mental disorder, mental retardation, learning disability or physical disability including, but not limited to, blindness, or pregnancy and provides equal access to the Boy Scouts and other designated youth groups. Inquiries regarding CES nondiscrimination policies should be directed to the Associate Executive Director's office, CES, 40 Lindeman Drive Trumbull, CT 06611; 203-365-8831.