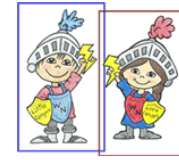


**SEPTEMBER
WEST NOBLE PRIMARY SCHOOL
BREAKFAST MENU
2024-2025**



MONDAY	TUESDAY	WEDNESDAY	THURSDAY	FRIDAY	NEWS
2	3	4	5	6	Breakfast \$ 1.40 Lunch \$2.60 Milk .50¢ Adult Breakfast \$2.50 Adult Lunch \$4.60 Extra milk with your meal or if you carry your lunch the cost is .50¢ If your child has a food allergy, please turn in a current doctor's slip to the school nurse. Sharon Bennett WNP Food Service Manager, ext. 4035 Debbie Rodriguez Director of Food Service ext. 5035 Milk is served with Breakfast and Lunch
Labor Day	Pizza Fruit Juice Milk	Blueberry Waffles Fruit Juice Milk	Cereal Fruit Juice Milk	Banana Muffin Fruit Juice Milk	
9	10	11	12	13	
Cereal Fruit Juice Milk	Pizza Fruit Juice Milk	Pancakes Fruit Juice Milk	Cereal Fruit Juice Milk	Blueberry Muffin Chat Snax Fruit Juice Milk	
16	17	18	19	20	
Cereal Fruit Juice Milk	Pizza Fruit Juice Milk	French Toast Fruit Juice Milk	Cereal Fruit Juice Milk	Cinnamon Roll Fruit Juice Milk	
23	24	25	26	27	
Cereal Fruit Juice Milk	Pizza Fruit Juice Milk	Waffles Fruit Juice Milk	Cereal Fruit Juice Milk	Chocolate Muffin Chat Snax Fruit Juice Milk	
30					
Cereal Fruit Juice Milk					

MENU IS SUBJECT TO CHANGE