

# **PEAK TO PEAK CHARTER SCHOOLS, INC.**

**501(C)(3) NON-PROFIT PUBLIC SCHOOL**

## **BOARD OF DIRECTORS**

### **2024-25 PEAK TO PEAK BOARD OF DIRECTORS**

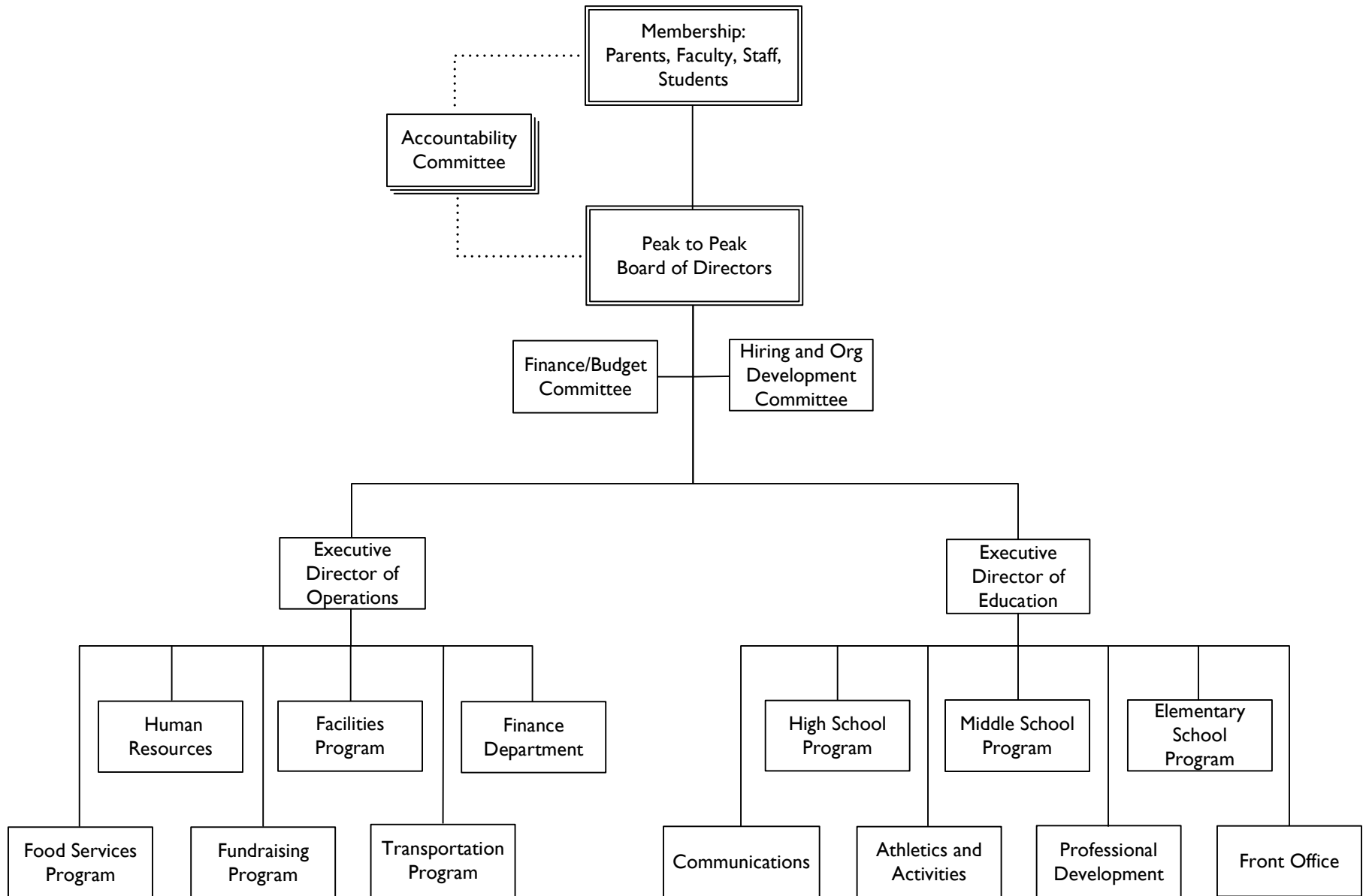
#### **VOTING MEMBERS:**

|                        |                        |
|------------------------|------------------------|
| <b>President:</b>      | <b>Brian Boonstra</b>  |
| <b>Vice President:</b> | <b>Nicole Harrison</b> |
| <b>Treasurer:</b>      | <b>Samantha Juedes</b> |
| <b>Secretary:</b>      | <b>Marlene Martin</b>  |
| <b>Member:</b>         | <b>Mark Seeber</b>     |
| <b>Member:</b>         | <b>Courtney Six</b>    |
| <b>Member:</b>         | <b>Marcus Watkins</b>  |

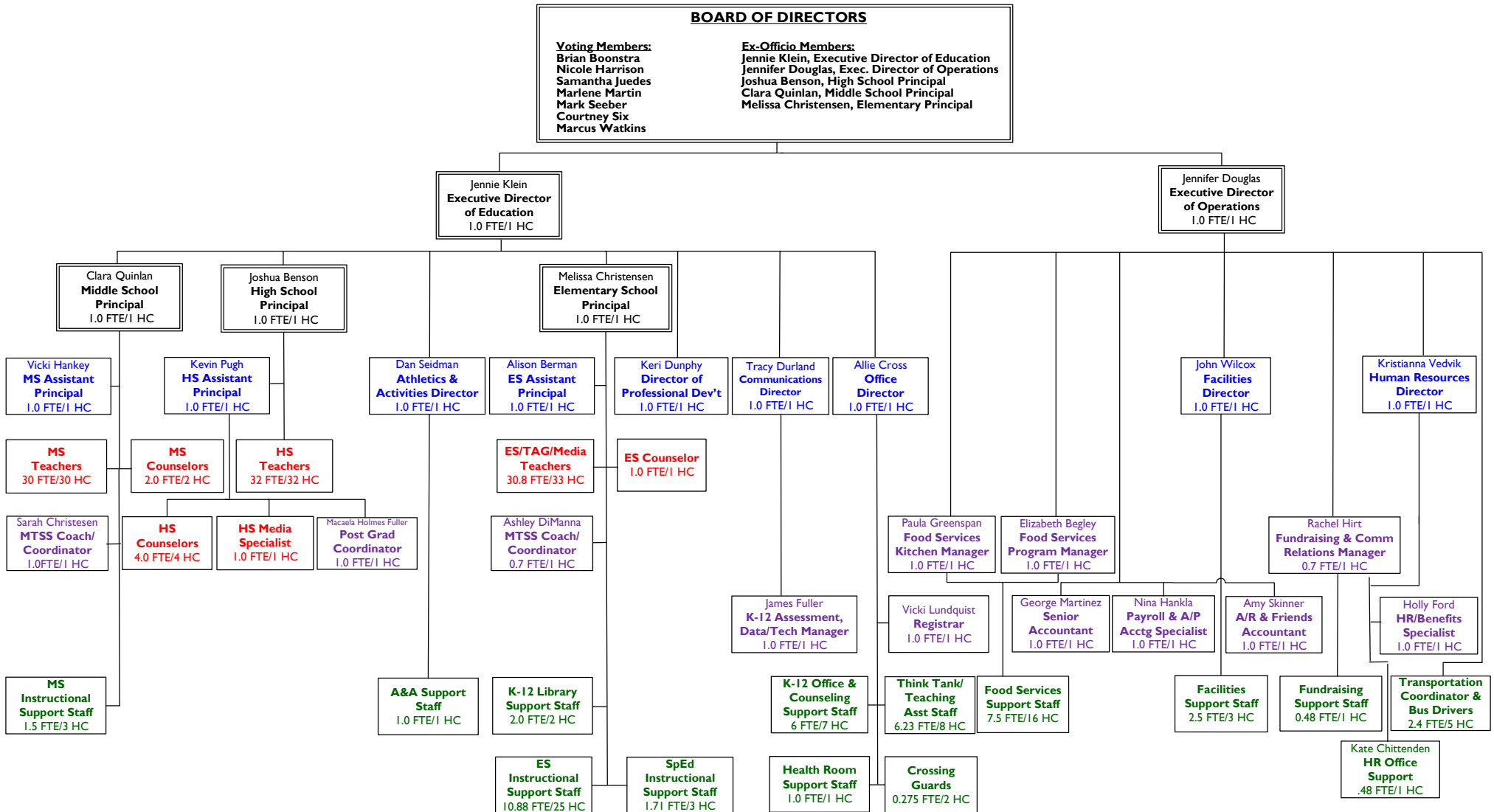
#### **NON-VOTING MEMBERS:**

|                                     |                            |
|-------------------------------------|----------------------------|
| <b>Exec Director of Education:</b>  | <b>Jennie Klein</b>        |
| <b>Exec Director of Operations:</b> | <b>Jennifer Douglas</b>    |
| <b>High School Principal:</b>       | <b>Joshua Benson</b>       |
| <b>Middle School Principal:</b>     | <b>Clara Quinlan</b>       |
| <b>Elementary School Principal:</b> | <b>Melissa Christensen</b> |

# PEAK TO PEAK CHARTER SCHOOL ORGANIZATIONAL STRUCTURE



# 2024-25 PEAK TO PEAK CHARTER SCHOOL ORGANIZATIONAL CHART



**FRIENDS OF PEAK TO PEAK**  
SEPARATE 501(C)(3) FROM PEAK TO PEAK

**BOARD OF DIRECTORS**

**2024-25 FRIENDS OF PEAK TO PEAK  
BOARD OF DIRECTORS**

**VOTING MEMBERS:**

|                        |                        |
|------------------------|------------------------|
| <b>President:</b>      | <b>Brian Boonstra</b>  |
| <b>Vice President:</b> | <b>Nicole Harrison</b> |
| <b>Treasurer:</b>      | <b>Samantha Juedes</b> |
| <b>Secretary:</b>      | <b>Marlene Martin</b>  |
| <b>Member:</b>         | <b>Mark Seeber</b>     |
| <b>Member:</b>         | <b>Courtney Six</b>    |
| <b>Member:</b>         | <b>Marcus Watkins</b>  |

**NON-VOTING MEMBERS:**

|                                     |                            |
|-------------------------------------|----------------------------|
| <b>Exec Director of Education:</b>  | <b>Jennie Klein</b>        |
| <b>Exec Director of Operations:</b> | <b>Jennifer Douglas</b>    |
| <b>High School Principal:</b>       | <b>Joshua Benson</b>       |
| <b>Middle School Principal:</b>     | <b>Clara Quinlan</b>       |
| <b>Elementary School Principal:</b> | <b>Melissa Christensen</b> |

**PRAIRIE VIEW, INC.**  
(BUILDING CORPORATION SUBSIDIARY OF PEAK TO PEAK)

**BOARD OF DIRECTORS**

**2024-25 PRAIRIE VIEW, INC.  
BOARD OF DIRECTORS**

**VOTING MEMBERS:**

|                        |                        |
|------------------------|------------------------|
| <b>President:</b>      | <b>Brian Boonstra</b>  |
| <b>Vice President:</b> | <b>Nicole Harrison</b> |
| <b>Treasurer:</b>      | <b>Samantha Juedes</b> |
| <b>Secretary:</b>      | <b>Marlene Martin</b>  |
| <b>Member:</b>         | <b>Mark Seeber</b>     |
| <b>Member:</b>         | <b>Courtney Six</b>    |
| <b>Member:</b>         | <b>Marcus Watkins</b>  |

**NON-VOTING MEMBERS:**

|                                     |                            |
|-------------------------------------|----------------------------|
| <b>Exec Director of Education:</b>  | <b>Jennie Klein</b>        |
| <b>Exec Director of Operations:</b> | <b>Jennifer Douglas</b>    |
| <b>High School Principal:</b>       | <b>Joshua Benson</b>       |
| <b>Middle School Principal:</b>     | <b>Clara Quinlan</b>       |
| <b>Elementary School Principal:</b> | <b>Melissa Christensen</b> |