

Reading Progress

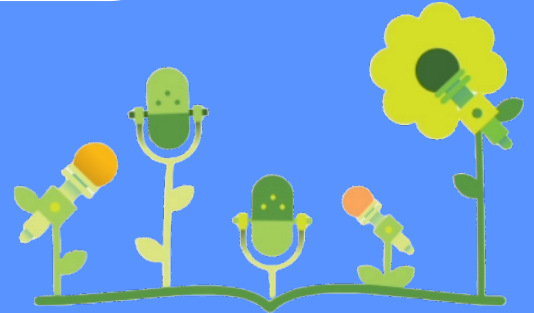


Tips and Tricks



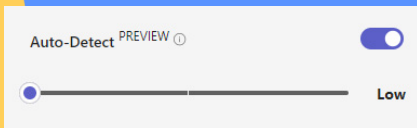
Create an Assignment

- Click on Assignments
- Create New Assignment
- Click Attach and Select Reading Progress or click Learning Accelerators



Adjust Sensitivity

When starting out with Reading Progress, it is recommended that you adjust the analysis sensitivity to "Low".



Audio and Video Settings

- On first use, students need to click "Allow" when the browser asks for permission to use the Mic and Camera.
- It may also be necessary to check the Audio/Video settings in the Microsoft Teams app settings.



Avoid All-at-Once Recording

Instead, consider off-setting Reading Progress activity by adding the task within a Must-Do, May-Do list or create a Reading Progress area that is limited to 5 or 6 at a time.

Correct any A.I. Mistakes

Reading Progress A.I. will learn and improve over time. Whenever you notice potentially incorrect analysis, correct it by clicking on the word.

