



Summer Math Program
Entering Seventh Grade
Week 10



Fast Facts

See how many you can do in one minute!

$$(0) + (+9) =$$

$$(-8) + (-9) =$$

$$(+30) \div (-6) =$$

$$(-6) - (+4) =$$

$$(-1) \times (-5) =$$

$$(0) - (+3) =$$

$$(-7) + (-5) =$$

$$(+3) \times (+1) =$$

$$(-3) \times (+1) =$$

$$(+4) \times (+8) =$$

$$(0) \times (0) =$$

$$(+1) \div (+1) =$$

$$(+24) \div (-8) =$$

$$(+1) \times (+3) =$$

What's Your Angle?

For a Khan Academy lesson on basic properties of angles go to:

<http://www.khanacademy.org/math/geometry/angles/v/angles--part-2>.

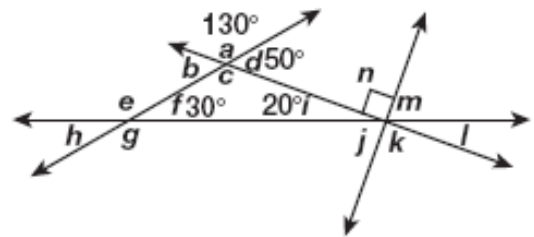
Use the diagram to give an example of each.

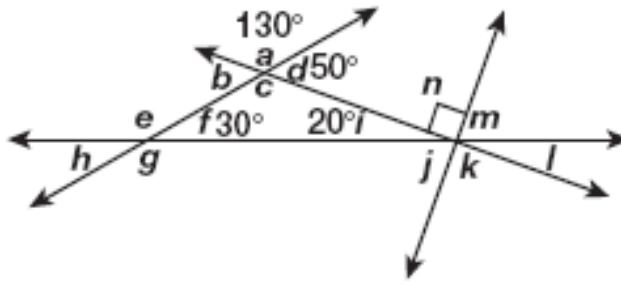
1. a pair of complementary angles

2. a pair of supplementary angles

3. an interior angle of the triangle

4. an exterior angle of the triangle





Find the degree measure of each angle.

5. $\angle b$ _____

6. $\angle c$ _____

7. $\angle e$ _____

8. $\angle h$ _____

9. $\angle j$ _____

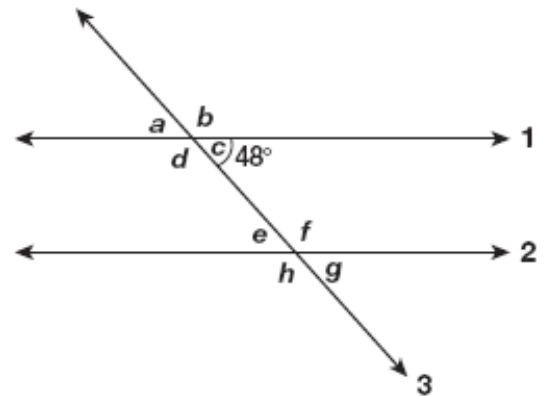
10. $\angle k$ _____

Use the diagram to give two examples of each.

1. a pair of vertical angles

2. a pair of alternate interior angles

3. a pair of alternate exterior angles



Find the measure of each angle.

4. $\angle a$

5. $\angle b$

6. $\angle d$

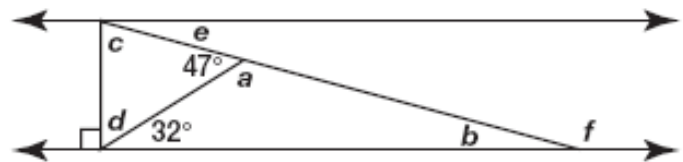
Use the diagram to find each angle measure.

1. a _____

2. b _____

3. c _____

4. d _____



Problem Solving with Ratios and Percents

Solve the following problems. Show your work on the right-hand side.

1. Roberta is planning a mural. She starts by making a sketch. The sketch is 40 inches wide and 55 inches tall. The mural will be 30 feet wide. How tall will it be?

2. For her sketch, Roberta mixed a shade of green using 3 tubes of yellow paint and 2 tubes of blue paint. She wants to use this same shade in the mural. If she has 6 gallons of blue, how many gallons of yellow does she need?

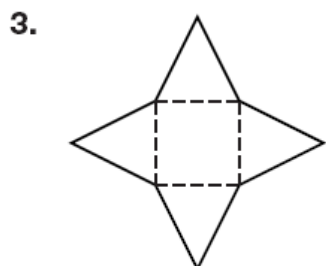
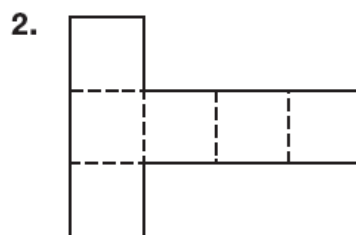
3. A drawing shows a scale 1 inch : $\frac{1}{8}$ inch. What length is represented by 3 inches on the drawing? Explain how you found your answer.

4. In a survey of 200 students, 40 liked pizza, 60 liked stew, and 100 liked meatloaf best for lunch. What percent liked pizza best?

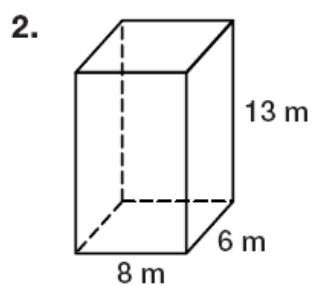
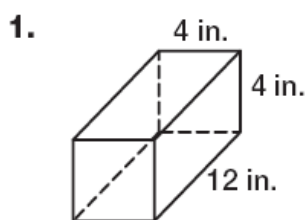
5. Teri spent \$8 on lunch, \$12 on a movie, and \$5 on a scarf. What percent of the money she spent was on lunch? Explain.

GEOMETRY

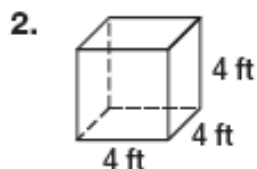
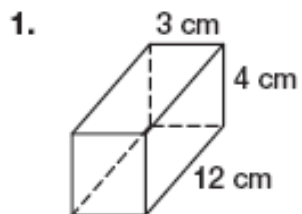
Draw a net for each solid figure or identify the solid figure each net represents.



Find the volume of each rectangular prism.



Find the surface area of each figure.



Web Links

Try these web sites for additional practice and interactive learning!

- Cool Math

<http://www.coolmath.com/>