

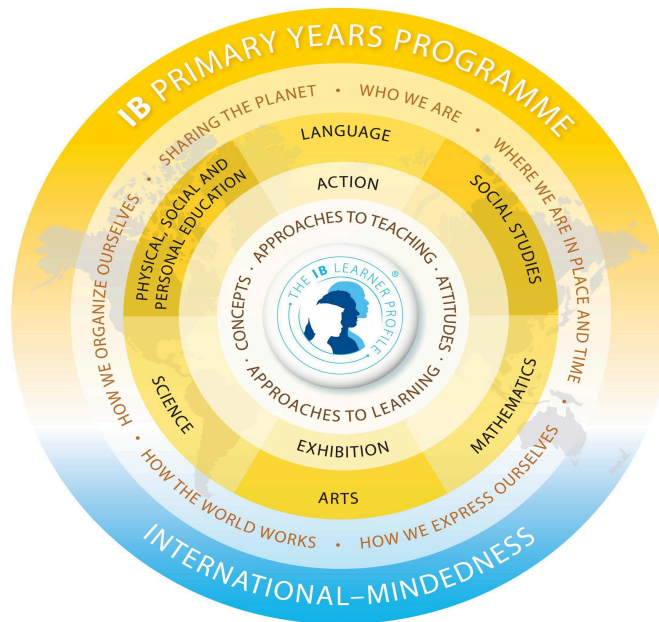
Grade 3

CURRICULUM GUIDE

2025 - 2026



Bonn
International
School



As an International Baccalaureate (IB) World School, we are committed to the Primary Years Programme (PYP). This is the IB programme designed for students aged 3–12 years. At BIS, students are in the PYP from Early Learning until Grade 5. The PYP is the best preparation for the IB programmes that follow, the Middle Years Programme (MYP) in Grades 6 - 10 and the Diploma Programme (DP) in Grades 11 and 12 .

The PYP is an international curriculum framework, based on best practice and research from around the world. The programme focuses on the development of the whole child, both in the classroom and in the world outside. We challenge students to excel in their learning and in their personal growth, and we aim to inspire in them a quest for learning throughout life.

Learning in the PYP is:

Inquiry-based: We believe children learn best through structured, purposeful inquiry. Students are expected to play an active role in, and take responsibility for, their own learning. Students are encouraged to ask questions, investigate and find ways to answer these questions, and to sustain this enjoyment of learning throughout life.

Collaborative: Learning is a social endeavour, and there is great emphasis on sharing, group work and collaboration at our school. Students learn to communicate well, to encourage each other, and to develop an open mind so they can learn from each other.

Differentiated: The learner is at the heart of our curriculum framework. Children come to school with a range of experiences, backgrounds and prior knowledge. Teachers in the PYP aim to design learning to suit children at all different levels of competence or experience, providing support for those who need it, and extensions for those who need more challenge. Not just their knowledge or skills.

Concept-driven: Students spend their time at school exploring and learning about important concepts that have relevance in their own lives, and that they can transfer to other contexts. Our aim is to develop students' understanding of big ideas, not

The Learner Profile Attributes

International mindedness is defined by the IB in the attributes of the Learner Profile. The PYP curriculum design supports students in developing these attributes, which are actively modeled by all members of our learning community. The Learner Profile attributes help develop internationally minded people. We want our learners to become:

Inquirers:

We nurture our curiosity, developing skills for inquiry and research. We know how to learn independently and with others. We learn with enthusiasm and sustain our love of learning throughout life.

Knowledgeable:

We develop and use conceptual understanding, exploring knowledge across a range of disciplines. We engage with issues and ideas that have local and global significance.

Thinkers:

We use critical and creative thinking skills to analyze and take responsible action on complex problems. We exercise initiative in making reasoned, ethical decisions.

Communicators:

We express ourselves confidently and creatively in more than one language and in many forms. We collaborate effectively, listening carefully to the perspectives of other individuals and groups.

Principled:

We act with integrity and honesty, with a strong sense of fairness and justice, and with respect for the dignity and rights of people everywhere. We take responsibility for our actions and their consequences.

Open-minded:

We critically appreciate our own cultures and personal histories, as well as the values and traditions of others. We seek and evaluate a range of points of view, and we are willing to grow from the experience.

Caring:

We show empathy, compassion and respect. We have a commitment to service, and we act to make a positive difference in the lives of others and in the world around us.

Risk-Takers:

We approach uncertainty with forethought and determination; we work independently and cooperatively to explore new ideas and innovative strategies. We are resourceful and resilient in the face of challenges and change.

Balanced:

We understand the importance of balancing different aspects of our lives – intellectual, physical, and emotional – to achieve well-being for ourselves and others. We recognize our interdependence with other people and with the world in which we live.

Reflective:

We thoughtfully consider the world and our own ideas and experience. We work to understand our strengths and weaknesses in order to support our learning and personal development.

Concepts

Our aim is for students to develop an understanding of big concepts, to explore these concepts in different ways, and to be able to apply their understanding of these concepts to new and unfamiliar situations. Our Units of Inquiry are organized in such a way that they offer opportunities for students to explore the **PYP key concepts** multiple times and in lots of ways throughout the PYP. These key concepts are:

Form (what is it like?)

Function (how does it work?)

Change (how is it changing?)

Connection (how is it connected to other things?)

Causation (why is it like it is?)

Responsibility (what is our responsibility?)

Perspective (what are the points of view?)

Approaches to Learning

Students develop a range of transdisciplinary skills throughout the PYP. These skills are divided into the following sets of skills:

Communication skills

Social skills

Self-management skills

Research skills

Thinking skills

Action

We believe that real learning will lead to some action or some change in attitude or thinking. Once something is learned and fully understood, it will lead to action of some kind. Student action in the PYP can be big or small, happen at school or at home, and will develop over time. Examples of student action might be: including more people on the playground, choosing healthy foods, trying a new activity, turning off the lights when leaving a room, and lots more.

The Programme of Inquiry in Grade 3

Each school year, students explore six different 'Units of Inquiry'. Each unit of inquiry lasts for approximately 6 weeks. The units are designed to be relevant, significant, engaging and challenging, as well as developmentally appropriate. Our units provide the context for much of the learning in Language and Mathematics, as well as all content within Science and Social Studies. Units of Inquiry are transdisciplinary and, where appropriate and authentic, connections are also made between the units and the single subjects Music, Visual Arts, German and PE.

Grade 3 Units of Inquiry

<p style="text-align: center;"><i>Who we are</i></p> <p>An inquiry into the nature of the self; beliefs and values; personal, physical, mental, social and spiritual health; human relationships including families, friends, communities, and cultures; rights and responsibilities; what it means to be human.</p>	<p style="text-align: center;"><i>Where we are in place and time</i></p> <p>An inquiry into orientation in place and time; personal histories; homes and journeys; the discoveries, explorations and migrations of humankind; the relationships between and the interconnectedness of individuals and civilizations, from local and global perspectives.</p>	<p style="text-align: center;"><i>How we express ourselves</i></p> <p>An inquiry into the ways in which we discover and express ideas, feelings, nature, culture, beliefs and values; the ways in which we reflect on, extend and enjoy our creativity; our appreciation of the aesthetic.</p>
<p>Central idea Understanding who we are as individuals and as a community empowers us to grow as activists.</p> <ul style="list-style-type: none"> ● How stereotypes can impact our identity ● How our values impact our decisions and choices ● How to be a social justic advocate 	<p>Central idea Trailblazers change the course of history.</p> <p>Lines of Inquiry:</p> <ul style="list-style-type: none"> ● Trailblazers and what they did and why? ● The setting and context at that particular time ● The impact trailblazers had on society 	<p>Central idea Cultures express creativity in many ways.</p> <p>Lines of Inquiry:</p> <ul style="list-style-type: none"> ● What culture means to me ● Different symbolism within cultures ● Artistic representation of beliefs and cultures

<i>How the world works</i>	<i>How we organize ourselves</i>	<i>Sharing the planet</i>
An inquiry into the natural world and its laws; the interaction between the natural world (physical and biological) and human societies; how humans use their understanding of scientific principles; the impact of scientific and technological advances on society and on the environment.	An inquiry into the interconnectedness of human-made systems and communities; the structure and function of organizations; societal decision-making; economic activities and their impact on humankind and the environment.	An inquiry into rights and responsibilities in the struggle to share finite resources with other people and with other living things; communities and the relationships within and between them; access to equal opportunities; peace and conflict resolution.
Central idea Human survival is connected to understanding the continual changing nature of the Earth.	Central idea In a workplace people share responsibility towards a common purpose.	Central idea Water usage can cause conflict amongst communities.
Lines of Inquiry: <ul style="list-style-type: none"> • How the different components of the Earth are interrelated • Why the Earth has changed and is continuing to change • Human responses to the Earth's changes 	Lines of Inquiry: <ul style="list-style-type: none"> • The purpose of an economic system • How marketplaces are organized • How people work together to achieve a common goal 	Lines of Inquiry: <ul style="list-style-type: none"> • The importance of water as a finite resource • Causes of conflict • Different views on how to manage water • Our responsibility as global citizens

Languages

Language

English is our shared language of instruction and communication. In a PYP school the focus is not just on learning language in isolation, but also on the application of language skills across the subject areas and throughout the Programme of Inquiry. Some language is taught as 'stand-alone', while other aspects of language are taught in the context of our Units of Inquiry. We believe students learn best when they have opportunities to learn within meaningful contexts, and when the teaching is in response to students' needs, interests and previous experiences. Students at BIS come from a wide range of language and cultural backgrounds, which we view as a major asset to our learning community.

In a PYP language classroom:

- Students and teachers appreciate language diversity
- All students feel supported in taking risks in language learning
- There are close connections with the Media Centre, other classrooms and single subject teachers
- Students connect to the broader world through technology
- Students have many opportunities to engage with high-quality literature

Students develop skills in the following strands of language learning:

- Written Language: Reading and Writing
- Oral Language: Listening and Speaking

Our English programme encompasses a readers' and writers' workshop model, as well as offering opportunities to develop speaking and listening skills within an integrated programme.

Students develop skills and understandings across the four areas of language learning.

Reading	<ul style="list-style-type: none">• Different types of texts serve different purposes• The structure and organization of written language influences and conveys meaning• Reading and thinking work together to enable us to make meaning• Applying a range of strategies helps us to read and understand new and more complex texts• Identifying the main idea in a text helps us to understand what is important
Writing	<ul style="list-style-type: none">• Writing and thinking work together to enable us to express ideas and convey meaning• Asking questions of ourselves and others helps to make our writing more focused and purposeful• The way we structure and organize our writing helps others to understand and to appreciate it• Rereading and editing our own writing enables us to express what we want to say more clearly• The structure of different types of texts includes identifiable features• We write in different ways for different purposes
Speaking and Listening	<ul style="list-style-type: none">• Taking time to reflect on what we hear and say helps us to make informed judgments and form new opinions• Spoken communication is different from written communication - it has its own set of rules• Thinking about the perspective of our audience helps us to communicate more effectively and appropriately• Spoken language varies according to the purpose and audience

Readers and Writers Workshop:

We work with the Readers and Writers Workshop model, based on the resources developed by the Columbia University Teacher's College Reading and Writing Project. The workshop model consists of several components each day, allowing for teachers to teach specific skills and for students to have time to practice and apply the skills taught. The workshop model also allows teachers to support and challenge all students, no matter their level of competence. Each year, we teach four Writing Units of Study and four Reading Units of Study.

Writing Units of Study in Grade 3:

- 'Crafting true stories' - writing personal narratives
- 'The Art of Information Writing – Expository Nonfiction'
- 'Once Upon a Time' - adapting and writing fairy tales
- 'Changing the World' – Persuasive writing

Reading Units of Study in Grade 3:

- 'Building a Reading Life' - developing routines as a reader, building stamina
- 'Reading to learn' - determining importance
- 'Character studies' - developing comprehension and analysis skills
- 'Solving the Mystery before the Detective' - reading mysteries

Phonics, Handwriting and Spelling

We use the UFLI phonics programme to support students' knowledge and skills in reading and writing. Handwriting and spelling are embedded into the phonics programme.

German

All students at BIS study the German Language. Students enter either [German Language and Literature](#) (for students who speak German at a native language level) or [German Language Acquisition](#) (for students learning German as an additional language). German Language Acquisition is further divided into three phases of language acquisition. Students are carefully assessed and monitored to ensure accurate grouping of students. Students of all classes within the grade level have German at the same time, as we have three different groups with three German teachers. As in the English language, students work on written and oral communication skills in German. Aspects of German culture are explored through our host country celebrations such as St. Martin in November and Karneval in February. Students in the German programme also learn other aspects about Germany within some topics/Units of Inquiry in their language programme.

Mathematics

We believe that students learn best through purposeful, structured inquiry. The aim of our Mathematics Programme is to develop students into confident mathematical thinkers, with a sound knowledge of numbers and the creativity to apply this knowledge to solve problems in many ways.

Underlying principles of our Mathematics Programme:

- All students are capable of learning Mathematics to high levels; we teach and promote the development of a growth mindset in our maths lessons and create a classroom culture where mistakes are viewed as opportunities for learning.
- We aim for students to develop a deep understanding of mathematical concepts, a sound knowledge base, fluency with procedures and skills and the ability to apply their learning in a variety of contexts.
- Through differentiation practices, our Maths Programme aims to be inclusive and ensures that all students reach their full potential.
- Through our transdisciplinary approach, students are given opportunities to see Mathematics in real life contexts as well as in other areas of the curriculum.

BIS has adapted Ontario Mathematics (2020) curriculum standards to develop a clear progression of learning outcomes for the Grade levels 1 - 5. The programme is based on the most current research into how students learn Mathematics and provides a seamless fit with our school's Definition of High Quality Learning as well as requirements of the IB Primary Years Programme.

Our Mathematics Programme covers the following distinct, but related, strands in every grade level:

A: Social Emotional Learning				
B: Number	C: Algebra	D: Data	E: Spatial Sense	F: Financial Literacy

Here are some of the knowledge and skills that students in Grade 3 are expected to learn.

Number

Students work with numbers up to 1,000 and learn how to break down numbers in different ways. For example, the number 225 can be described as $200 + 20 + 5$ or 2 hundreds, 2 tens, and 5 ones. Students learn that fractions can be represented in more than 1 way – for example, one-half can be thought of as 2 one-fourths. Multiplication is introduced as an area of rows and columns, and students are expected to know multiplication facts of $\times 2$, $\times 5$ and $\times 10$, and related division facts.

Algebra

Students learn to identify and describe what repeats in a pattern, such as when a specific event happens every Monday, or when a number sequence goes up by 2 each time. Students begin to identify multiplication and division equations that are equal, such as 3×4 and 6×2 . Students will write code to perform a repeating operation, such as a repeating “add 3”, beginning at 0, to make a number pattern. They will also use mathematical modelling to analyze and create possible solutions for real-life situations, such as planning a community vegetable garden.

Data

Students continue to develop their understanding of data. They learn more ways to collect, organize and display data. They start to use scales on their graphs and begin to use averages to make comparisons of data.

Spatial Sense

Students continue to develop their spatial sense as they recognize and describe 3-dimensional objects and imagine what these objects would look like if they were taken apart or flipped around. Students continue to measure length and are introduced to measuring the weight and capacity of objects. They learn how to measure the area of 2D shapes and how to tell time on both digital and analog clocks.

Financial Literacy

Students continue to develop their understanding of money by calculating the change required for simple transactions involving whole-Euro amounts.

Social Emotional Learning Skills and Mathematical Processes

Students identify and learn to manage emotions that they may feel such as pride, confusion, fear and excitement when faced with a new challenge to solve, such as creating and executing code that represents a math situation.

Personal, Social and Physical Education (PSPE)

Personal and Social Education

The development of a student's well-being is addressed through all areas of the PYP curriculum. Therefore students' social, personal and emotional development is the shared responsibility of all teachers at BIS. Children are given guidance to help develop positive attitudes and behaviours in order to meet challenges, make healthy lifestyle choices, and become successful learners.

Physical Education

Physical Education at BIS is about more than just student participation in sports and games. Its purpose is to develop a combination of transferable skills promoting physical, intellectual, emotional and social development. During the PYP, we endeavor to provide meaningful opportunities for learning about movement and through movement in a range of contexts.

Students in Grade 3 have PE lessons in the Sports Hall two periods per week. Depending on the time of year, some lessons take place outside on our fields.

PE units in Grade 3 include:

- Floor Hockey
- Parkour and Gymnastics
- Movement Composition: Cultural elements
- Paralympics: inclusion, determination
- Invasion games: Basketball, capture the flag
- Adventure challenge - Team Building, game creation

The Arts

Learning about and through the Arts is fundamental to the development of the whole child. It promotes creativity, critical thinking, problem-solving skills and social interactions. Through our Arts Programme students develop attitudes such as appreciation, empathy and Learner Profile attributes such as being a communicator and a risk-taker.

At BIS students have three periods of Visual Arts and three periods of Music over a ten-day cycle. Lessons take place in the Primary Art Room and the Primary Music Room.

Visual Art units in Grade 3 include:

- Shadow Art: Scherenschnitte & Silhouettes
- Purposes of Art
- Careers in Art & Package Design
- Wildlife Watercolours
- Rocks & Minerals

Music units in Grade 3 include:

- Exploring the recorder (sound, notes, fingering technique)
- Musical notation
- Singing (as part of the Upper Primary School Choir)
- Musical elements: Timbre
- Music appreciation: Poetry and Music

Toddle

Students are involved in learning how to assess, and reflect on, their own and others' work. Toddle is an online assessment, journal and portfolio tool. Toddle is used to record student progress, to plan for their next steps in learning and to document the learning journey. Parents log on to see and respond to examples of their children's learning.

Assessment and Reporting

In the PYP, assessment is integral to all teaching and learning. We use assessment data to inform our planning. This enables us to differentiate our programme so that each student is included, engaged and challenged at their own level.

Teachers use a range of assessment strategies and tools for formative (assessment FOR learning) and summative (assessment OF learning) assessments.

We also use a range of standardized assessment tools to keep track of children's progress, in Grade 3 these include:

- Developmental Reading Assessment (DRA) - administered at least twice a year to give an indication of reading level
- On demand writing samples using the Lucy Calkins Scaled Score Rubric - administered twice a year
- GloSS (Global Strategy Stage) Mathematics Assessment - administered at least twice a year to track student progress through the New Zealand Numeracy Framework

Annual Reporting Cycle

There are several opportunities each year for parents to be informed about their child's progress at school. In addition to the scheduled conferences, parents are encouraged to engage in open conversations with their child's teachers throughout the year, and can make appointments to speak with the teachers whenever they so wish. Teachers may also request additional meetings with parents if needed. Parents are also kept up to date through regular posts on Toddle.

Scheduled reporting times are:

October	Students in Grades 1 - 5 will participate in a three-way meeting with the teacher and parent to establish learning goals for the year.
January	Parent/teacher conferences are scheduled where you can discuss the progress your child is making.
March	Parents are invited in for a student-led conference whereby each student will talk through their learning progress with their parents.
June	At the end of the year, parents receive a formal written report for the academic year.

Students in Grades 3 - 5 will carry out MAP (Measure of Academic Progress) standardized assessments. These tests are used by the school to document growth and to track patterns across time.

Student Support

At BIS, we have a range of ways in which we support our students. We believe that sound relationships between teachers, support staff and students, as well as between students, are vital to ensure a good learning environment. Our aim is for all our students to feel safe, to feel accepted, to feel included and to feel cared about. We have a Primary School Counselor, who works with those students who might need some additional emotional or social support. She also works with whole classes on issues that might impact all children, such as bullying or safety issues.

The philosophy of the Learning Support Department at BIS is to empower students with learning differences to become confident, independent, well-balanced, responsible global citizens who can self-advocate and find their own path to success. Our Learning Support Programme is designed for students with mild to moderate learning difficulties. The LS teachers work in collaboration with homeroom teachers and parents to ensure that these students can make progress and show academic growth.