



L. Dow Hendricks | Elementary School



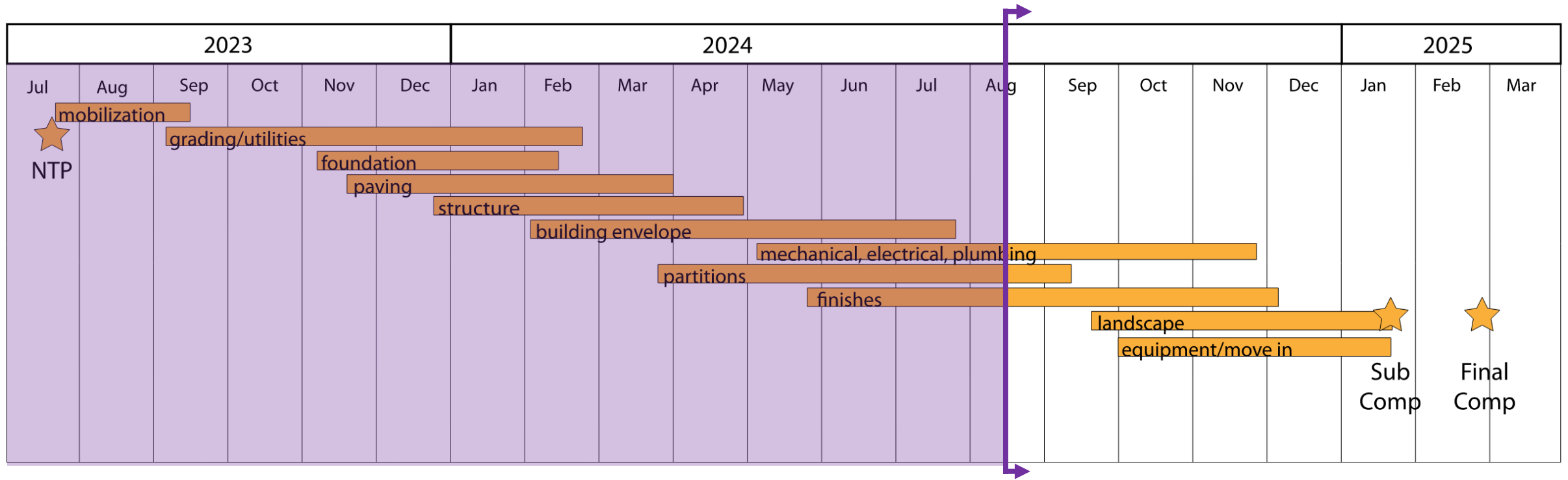
Anna ISD | Administration Building



AUGUST 2024
CONSTRUCTION UPDATE

L. Dow Hendricks Elementary School

Construction Update - August 2024



Construction Schedule



L. Dow Hendricks Elementary School

Construction Update - August 2024

MASONRY CLEANING IN
PROGRESS

CANOPY PREPPED FOR
METAL COMPOSITE PANEL
INSTALLATION

CANOPY SOFFIT FRAMING
CONTINUES

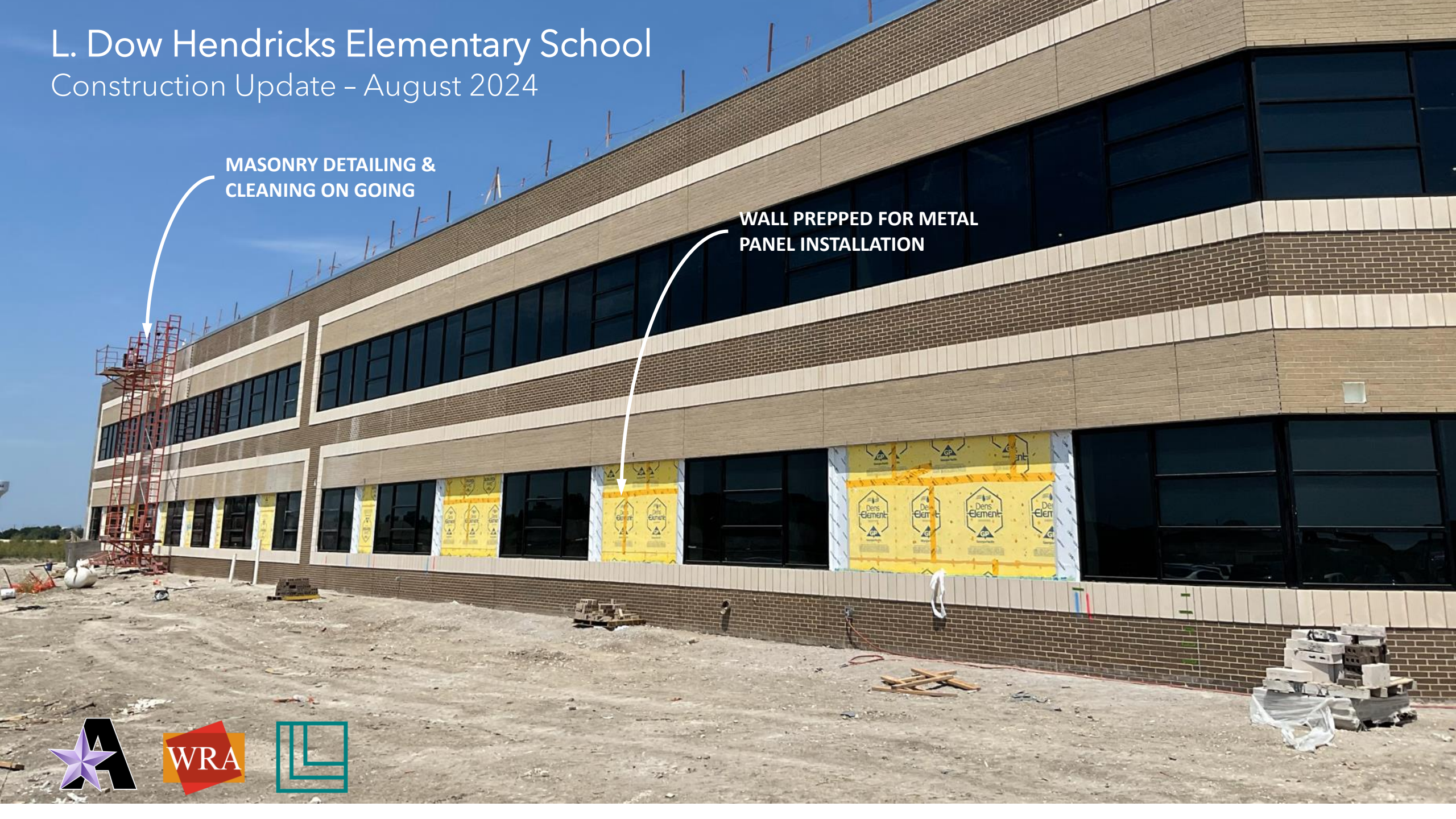


L. Dow Hendricks Elementary School

Construction Update - August 2024

MASONRY DETAILING & CLEANING ON GOING

WALL PREPPED FOR METAL PANEL INSTALLATION



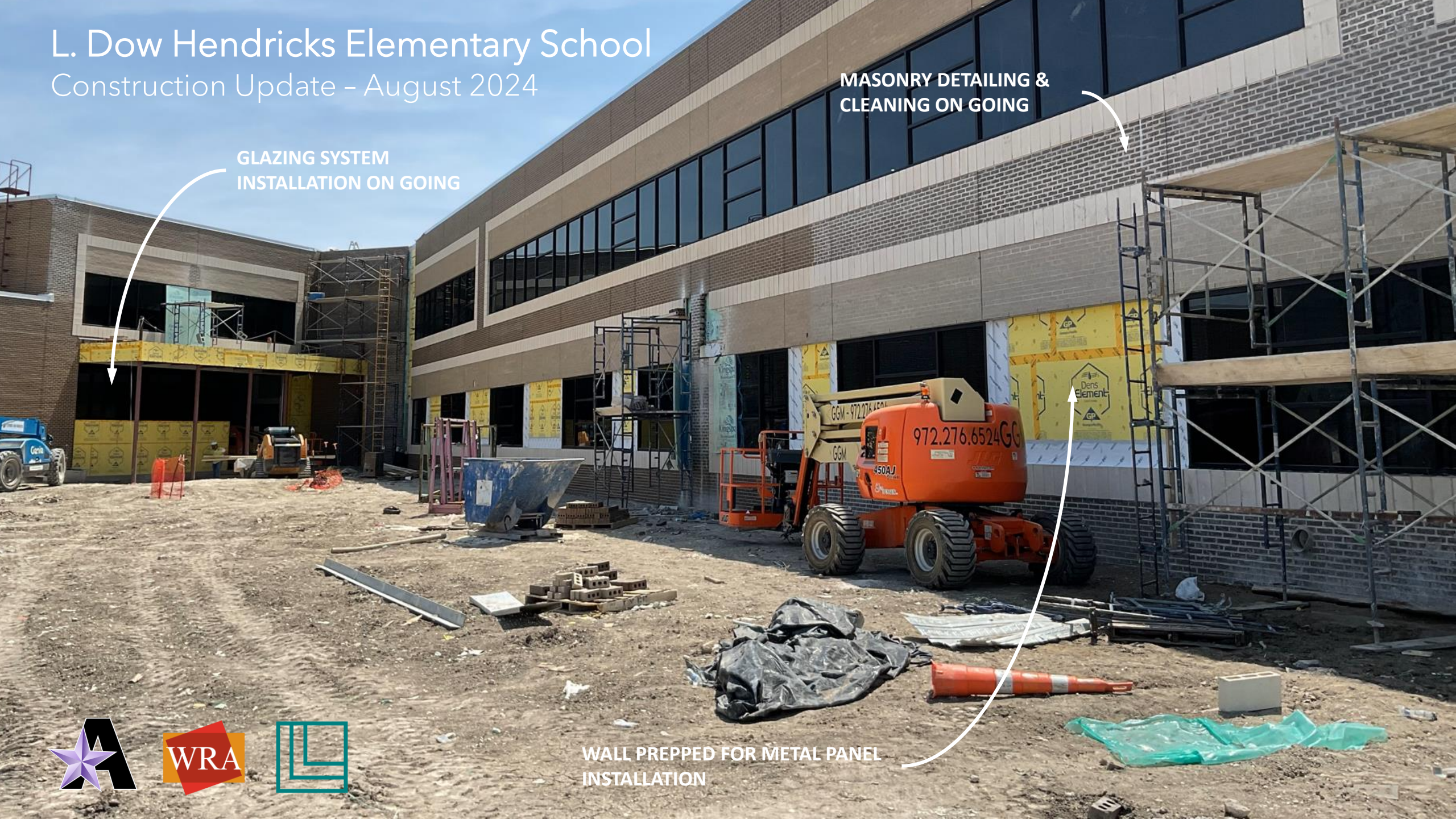
L. Dow Hendricks Elementary School

Construction Update - August 2024

MASONRY DETAILING & CLEANING ON GOING

GLAZING SYSTEM
INSTALLATION ON GOING

WALL PREPPED FOR METAL PANEL
INSTALLATION



L. Dow Hendricks Elementary School

Construction Update – August 2024

WALLS PREPPED FOR PAINT & FINISHES

FIRE SUPPRESSION
INSTALLATION
CONTINUES

MECHANICAL INSTALLATION
CONTINUES



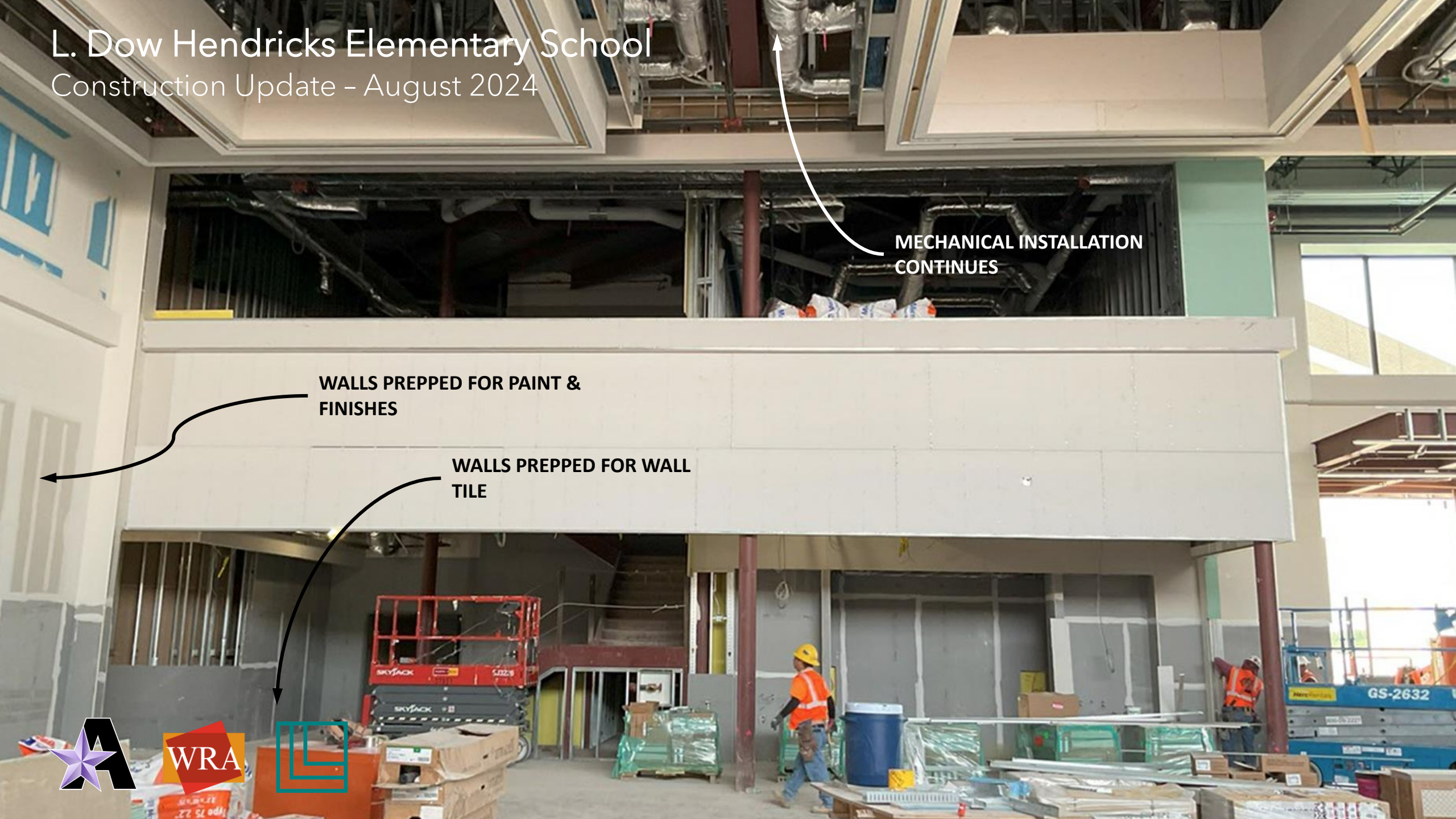
L. Dow Hendricks Elementary School

Construction Update - August 2024

MECHANICAL INSTALLATION
CONTINUES

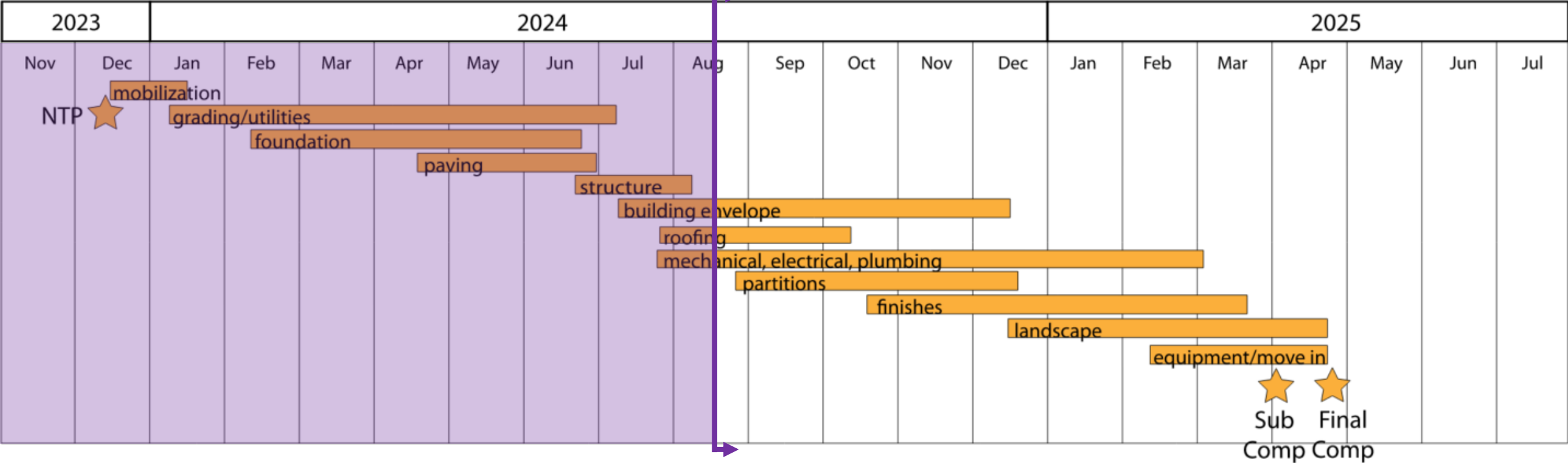
WALLS PREPPED FOR PAINT &
FINISHES

WALLS PREPPED FOR WALL
TILE



Anna ISD Administration Building

Construction Update - August 2024



Construction Schedule



Anna ISD Administration Building

Construction Update – August 2024

EXTERIOR BUILDING ENVELOPE ON GOING

SITE WORK CONTINUES



Anna ISD Administration Building

Construction Update - August 2024

JULY UPDATE



AUGUST UPDATE



PROGRESS

Anna ISD Administration Building

Construction Update – August 2024

ROOF DRAINAGE WORK
PROGRESSING

EXTERIOR ENVELOPE WALL
FRAMING ON GOING



Anna ISD Administration Building

Construction Update – August 2024

**GLAZING SYSTEMS BEING
INSTALLED**

**WATERPROOFING
INSTALLATION ON GOING**



Anna ISD Administration Building

Construction Update - August 2024



MECHANICAL INSTALLATION
CONTINUES



Anna ISD Administration Building

Construction Update - August 2024

PLUMBING INSTALLATION CONTINUES



ANNA ISD



Q & A

