

# TOPIC 6

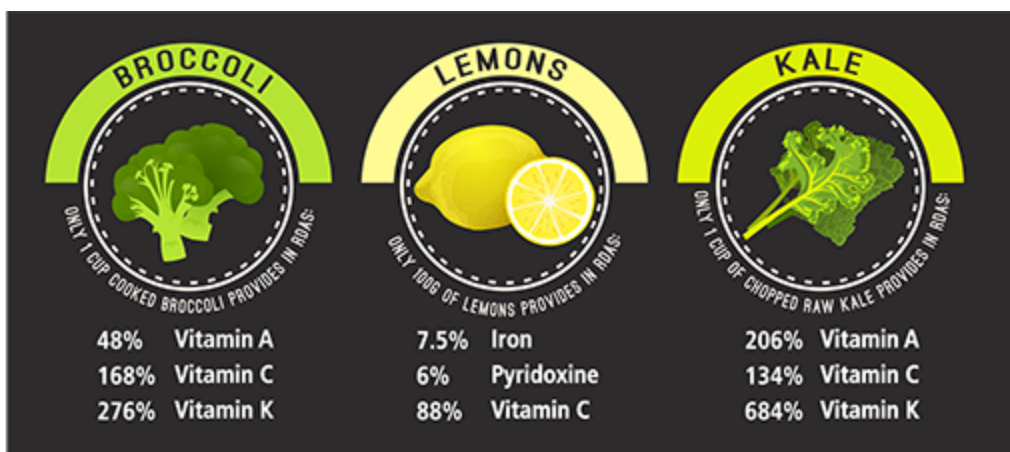
## Understand and Use Percent

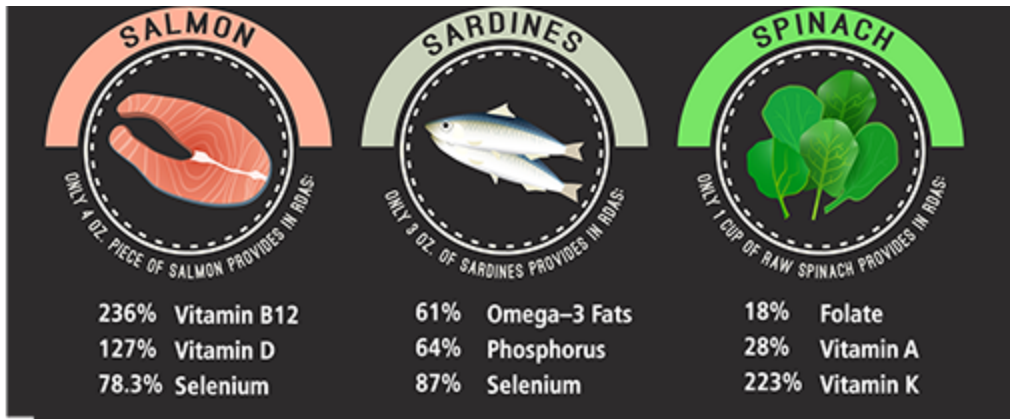
In this topic, students use percents to solve problems.

### CONNECT THE MATH

Statistics about food are often given as percents. Different foods contain varying amounts of vitamins and minerals. The nutrition panel on the side of a box or a bag contains information about the product. Breakfast cereal boxes often include the recommended daily allowance (RDA) for vitamins or minerals both with and without milk.

Nutritional information for unpackaged food, such as produce, is also available. A serving of broccoli (1 cup raw or cooked) and a serving of kale (1 cup raw, chopped) each contain more than 100% of the RDA of Vitamin C. The amount of Vitamin A in the vegetables differs greatly: a serving of broccoli has 48% of the RDA, while a serving of kale has over 200%.





## LESSON 6-1

### Understand Percent

A percent is a rate in which the first term is compared to 100. The percent is the number of hundredths that represent the part of the whole.

#### LESSON OBJECTIVES

- Represent the percent of a whole.
- Find the percent of a whole.

#### HOW CAN YOU HELP WITH HOMEWORK

##### Review Lesson Content

Watch and share these video tutorials with your student:

- [What's a Percent?](#)
- [How Do You Use a Proportion to Find What Percent a Part Is of a Whole?](#)

##### Review Key Vocabulary

Review key vocabulary from this lesson in your student's glossary:

- [percent](#)

You can use these search terms and phrases to help your student find additional help online:

- representing percents
- relating percents and wholes
- using percents

---

## LESSON 6-2

### Relate Fractions, Decimals, and Percents

Fractions, decimals, and percents are three ways to show parts of a whole.

---

#### LESSON OBJECTIVES

- Write equivalent values as fractions, decimals, and percents.
- Write fractions as decimals and percents when the denominator of the fraction is not 100.

---

#### HOW CAN YOU HELP WITH HOMEWORK

##### Review Lesson Content

Watch and share these video tutorials with your student:

- [How Do You Turn a Decimal into a Percent?](#)
- [How Do You Turn a Fraction into a Percent?](#)

You can use these search terms and phrases to help your student find additional help online:

- writing a percent
  - writing a decimal as part of a whole
  - writing a fraction as part of a whole
- 

## LESSON 6-3

### Represent Percents Greater Than 100 or Less Than 1

A percent greater than 100 is equivalent to more than the whole. A percent less than 1 is equivalent to less than  $\frac{1}{100}$  of the whole.

---

#### LESSON OBJECTIVES

- Write percents that are greater than 100.
  - Write percents less than 1.
- 

#### HOW CAN YOU HELP WITH HOMEWORK

##### Review Lesson Content

Watch and share these video tutorials with your student:

- [How Do You Turn a Percent into a Decimal?](#)
- [How Do You Turn a Percent into a Fraction?](#)

You can use these search terms and phrases to help your student find additional help online:

- writing percents greater than 100
  - writing percents less than 1
-

## LESSON 6-4

### Estimate to Find Percent

Equivalent fractions and compatible numbers can be used to estimate the percent of a number.

---

#### LESSON OBJECTIVES

- Estimate the percent of a number.
- 


#### HOW CAN YOU HELP WITH HOMEWORK

##### Review Lesson Content

Watch and share these video tutorials with your student:

- [How Do You Use Compatible Numbers to Estimate a Part of a Whole?](#)
- [How Do You Turn a Percent into a Fraction?](#)

You can use these search terms and phrases to help your student find additional help online:

- using fractions to estimate percents
  - using rounding to estimate percents
- 

## LESSON 6-5

### Find the Percent of a Number

Finding the percent of a whole is like finding a fractional part of a whole.

---

## LESSON OBJECTIVES

- Use the decimal form of a percent to find the percent of a number.
  - Write an equation to solve a percent problem.
- 


## HOW CAN YOU HELP WITH HOMEWORK

### Review Lesson Content

Watch and share these video tutorials with your student:

- [How Do You Use an Equation to Find a Part of a Whole?](#)
- [How Do You Use a Proportion to Find What Percent a Part Is of a Whole?](#)

You can use these search terms and phrases to help your student find additional help online:

- finding a percent
  - finding a part of a whole
- 

## LESSON 6-6

### Find the Whole Given a Part and the Percent

Models and equations can be used to find the whole amount when the percent and a part are known.

---

## LESSON OBJECTIVES

- Find the whole amount when given a part and the percent.
- 

## HOW CAN YOU HELP WITH HOMEWORK

## Review Lesson Content

Watch and share these video tutorials with your student:

- [How Do You Use an Equation to Find a Whole?](#)
- [How Do You Solve a Word Problem Using a Percent Proportion?](#)

You can use these search terms and phrases to help your student find additional help online:

- solving a percent problem
- finding the whole in a percent problem