

WELCOME TO
STEVENSON HIGH SCHOOL



TRANSFER STUDENT PROGRAM CONTACTS

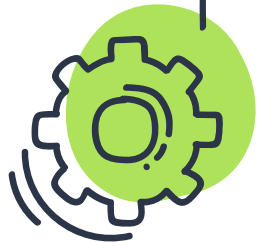
Ray Tad-y
School Counselor
rtady@d125.org

Lisa Scanio
School Counselor
lscanio@d125.org

Irina Kogan
School Counselor
ikogan@d125.org

Christina Foss
School Social Worker
cfoss@d125.org

Mara Grujanac
Family Engagement
mgrujanac@d125.org



FEEL FREE TO FOLLOW ALONG



TRANSFER STUDENT ORIENTATION PROGRAMS

- X Transfer welcome day
- X Transfer buddies
- X Weekly transfer group during lunch on Friday in 6110 (first meeting - 8/23)
- X Transfer Student Resource Fair in room 2104 (Tuesday, 8/20, 8:15 am)
- X Social worker check-in
- X [Transfer student materials](#)



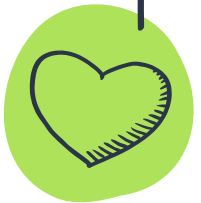
STUDENT SUPPORT TEAM (SST)

COUNSELOR

SOCIAL WORKER

DEAN

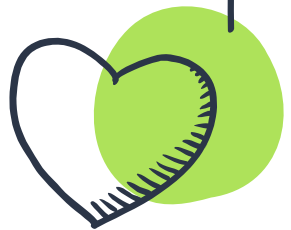
PSYCHOLOGIST



COUNSELOR

Maintains relationships with students/families throughout their high school years and provides support:

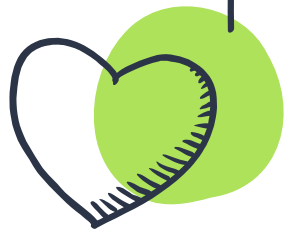
- X Academics
- X Personal/social concerns
- X Career/post-secondary planning



DEAN

Monitors behavior, maintains discipline, and provides support with:

- X Attendance/truancy
- X Behavior
- X Safety
- X Peer relations
- X Violations of school policy



PSYCHOLOGIST

Works with students and families to identify and address learning and behavioral issues that interfere with academic success

- ✗ Serves as 504 coordinator
- ✗ Evaluates eligibility for special education services as part of a multidisciplinary team
- ✗ Supports students social/emotional and behavioral health



SOCIAL WORKER

Provides social/emotional support with issues such as:

- X Family/peer concerns
- X Crisis situations at home or school
- X Changes in behavior/mood
- X Mental health concerns
- X Substance use and abuse
- X Assessment and referral to school/community supports



AVAILABLE SUPPORTS

Support Groups

Support groups meet weekly and allow students to connect with peers around common issues.

Academic Supports

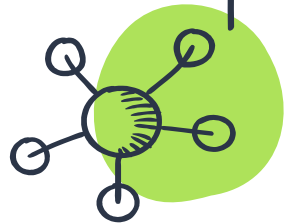
Tutoring services are available in both buildings to provide students with the support they need to achieve academic success.

Substance Use Prevention

The Student Assistance Program provides prevention, intervention, referrals, and support for those impacted by substance use/abuse.

College/Career Counseling

Counselors provide grade-specific programming for students and families throughout the four years.



WWW.D125.ORG



HELPFUL LINKS

- X [Bell Schedules](#)
- X [Attendance](#)
- X [Transcripts](#)
- X [Nurses' Office](#)
- X [Patriot Dollars](#)
- X [Transportation](#)
- X [stevenson.space](#)





PARENT PAGE

Information and Links

MONITORING STUDENT PROGRESS

Infinite Campus

View attendance
and schedule

Interactive Report Card (IRC)

View grades

The Grading Process

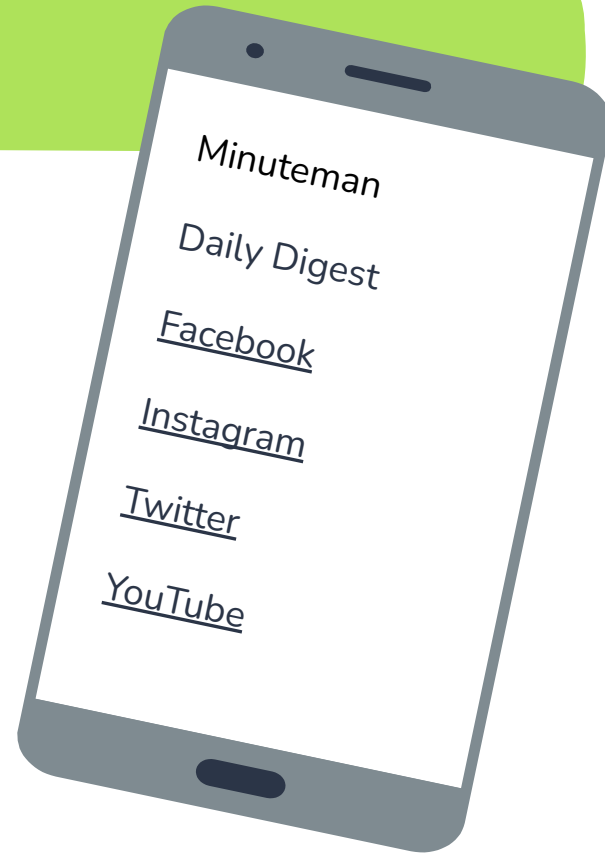
Canvas

View classroom
resources and
assignments



STAY INVOLVED AND INFORMED

- X Email
- X Family Engagement
- X Parent Groups
- X Student Activities



IMPORTANT DATES

AUG 21 Open House

AUG 29 Open House

OCT 9 PSAT (Juniors),
First Gen to College Night (All)

AUGUST

SEPTEMBER

OCTOBER

NOVEMBER

AUG 20
Transfer
Resource Fair
(8:15 AM)

AUG 26 Senior
Family Night

SEP 30 Financial Aid
Night (Juniors/Seniors)

OCT 22 Let's Talk
About Your Future
(Fr/So/Jr)



TRANSFER STUDENT CANVAS PAGE

Students can use the QR code to the right or join the canvas page at this link:

<https://d125.instructure.com/enroll/4RL3JG>



THANKS FOR ATTENDING!

Any questions?

You can find us at:

- x mgrujanac@d125.org
- x rtady@d125.org
- x ikogan@d125.org
- x lscanio@d125.org

