



Child Find at GCA

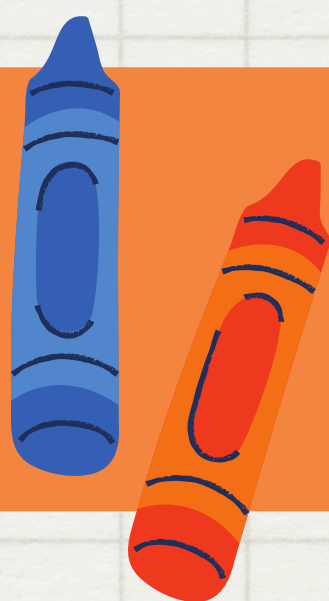


Child Find Inquiry

The Instructional Support Services (ISS) Department will send out a bi-yearly survey to all stakeholders. Families will receive the survey in August and January. The Instructional Support Services Assistant Director and Inquiry Specialist will monitor survey responses.

GCA Website

The Georgia Cyber Academy Website will contain all Child Find Information, including information on how stakeholders can make inquiries for support. The Instructional Support Services Assistant Director will monitor and update the website regularly.



GCA Community Day

District Staff attend Community Day and are available to discuss Child Find, along with any other concerns, at this time. The Instructional Support Services Department is available to answer questions and disseminate information.

Child Find Training

All GCA staff will participate in Child Find Training at the beginning of each school year. Staff will receive information on the Child Find process and how to submit referrals. The Instructional Support Services Department will provide this training.



Communication

The Instructional Support Services Department will oversee all district communication related to Child Find. As the ISS Department receives referrals, the Inquiry Specialist will ensure the appropriate team(s) are notified.

