



STUDENT LAPTOP INSURANCE



2024 - 2025

ANNUAL COVERAGE AT JUST

\$30

ENSURES PROTECTION AGAINST

COSTLY REPAIR OR REPLACEMENT EXPENSES (UP TO \$450)

IN THE EVENT OF ACCIDENTAL DAMAGE OR THEFT

We offer convenient payment options for laptop insurance:

Easily pay with your credit card online through Skyward Family Access.

For those who prefer in-person transactions, you can pay by cash or check directly to your friendly Campus Bookkeeper.



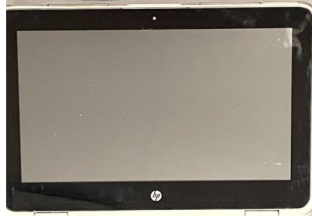
Visit skyward.ccisd.net

Flip to the back of this page for a detailed breakdown of the coverage provided by your student's device insurance.

INSURANCE BREAKDOWN

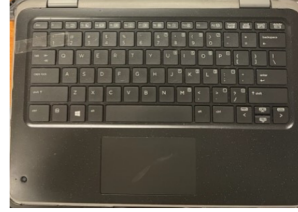


THE HINGE LINE



Top Assembly

Damage either intentional or accidental above the hinge up (LCD, Glass, Screen) without insurance can total **\$400**



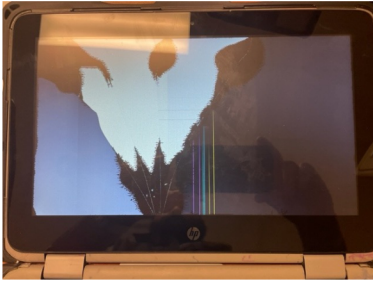
Bottom Assembly

Damage either intentional or accidental below the hinges (Keyboard, Touchpad) without insurance can total **\$125**

SCREEN DAMAGE

Both the LCD and Glass are covered under insurance IF the damage is deemed unintentional.

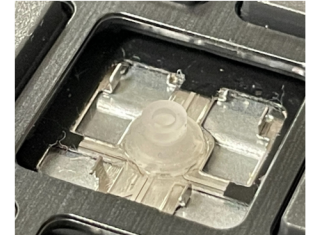
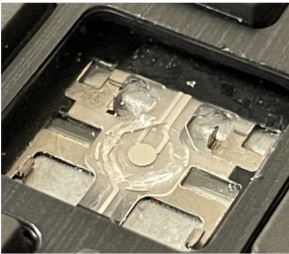
If the student does not have insurance a fee of **\$400** will be charged regardless if the damage is intentional/accidental.



KEYBOARD DAMAGE

A keyboard with a missing key that still has the membrane button intact can be repaired. →

← A keyboard with a missing key does not have the membrane button intact can not be repaired.



Component	Cost with insurance	Cost without insurance
Screen / Top Assembly	\$0	\$400
Ink / Carvings on Top Assembly	\$400	\$400
Bottom Assembly	\$0	\$65
Ink / Carvings on Bottom Assembly	\$65	\$65
Keyboard (with membrane)	\$0	\$60
Keyboard (without membrane)	\$60	\$60
Lost / Damaged Charger	\$40	\$40
Lost / Damaged case	\$40	\$40

WHEN IS INSURANCE VOIDED?

Insurance is deemed voided if:

The damage is clearly intentional. (Removal of Glass, Membrane button, Trackpad)

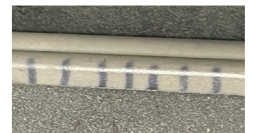
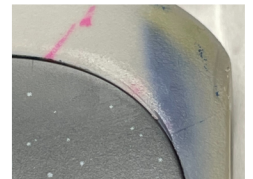
Ink/writing or carvings are on the device. (Ink seeps into the rubber of the laptop and cannot be removed) →

Damage occurs while the protective case is not installed.

Please note:
Accidental liquid damage is covered.

Adding stickers to your laptop is discouraged.

Slide them under the case instead!



If you or your students have any further questions regarding insurance, please reach out to your Campus Technician.