



CREAN LUTHERAN
HIGH SCHOOL

CREAN LUTHERAN HIGH SCHOOL

2024-2025 ADMISSIONS BROCHURE



There is none holy like the Lord: for there is none besides You; there is no rock like our God. 1 Samuel 2:2

CREAN LUTHERAN HIGH SCHOOL

GREETINGS IN THE NAME OF OUR LORD JESUS CHRIST!

It is a joy and honor to welcome and introduce you to a special ministry in Irvine, CA: Crean Lutheran High School. This year, we continue to celebrate God's faithfulness, amazing grace, and the many blessings He has poured into our ministry as we celebrate our 18th academic year. We invite you to come and see what the Lord is doing at Crean Lutheran High School.

OUR MISSION

While much is changing in this world and on our campus, as we continue to grow and add to our campus and community, one thing hasn't changed: our mission and commitment to *Proclaiming Jesus Christ Through Excellence in Education!*

OUR LEARNING OUTCOMES

In support of our mission, our schoolwide learning outcomes revolve around Christian faith, lifelong learning, and serving others. These desired outcomes are simply: *I am a Christian; I am a Learner; I am a Servant.* In the fulfillment

of reaching each of these outcomes, Crean Lutheran seeks to teach and live by God's grace through a guiding Biblical worldview. Through the nurturing lens of God's Word, along with the power of the Holy Spirit, we pray our students' faith will grow and be equipped to understand, view, and engage the culture around them - proclaiming Jesus Christ.

OUR VALUES

In order to support our mission and achieve our learning outcomes and vision, Crean Lutheran High School seeks to live out our five core values daily. We value **FAITHFULNESS** to our Lord and Savior, Jesus Christ. We value **EXCELLENCE** as the Christ-honoring approach to work as unto the Lord

(*Colossians 3:23-24*), using our God-given gifts to the very best that we can. We value **STEWARDSHIP** of our time, talents, treasures, and testimony of faith, recognizing that all that we have belongs to the Lord. We value **SERVICE** because Christ first loved and served us; we embrace service when we actively and joyfully serve while loving God and others. We value **COMMUNITY**, recognizing that what unites us in Jesus Christ as the Saints family is greater than any of our differences that could divide us.

OUR VISION

By the grace of God, Crean Lutheran High School strives to continue to be a safe haven and a beacon that shines the light of Jesus Christ in a world of spiritual darkness.

Our Spirit-led and committed faculty and staff continue to embrace and pursue excellence and are committed to providing loving care for our students. They love the Lord, excel at and love what they do, and love our students. Since today's world is increasingly complex and technologically advancing at an incomprehensible pace, our efforts in the classroom are future-oriented and responsive to the rapidly changing demands and needs of our students. Together, we partner as students, parents, school, church, and community in pursuit of the best educational practices in a Christ-centered environment, serving our Lord and proclaiming Jesus Christ.

OUR PASSION

The love of God and of Jesus Christ, the love of our students and their families, and the love of what we do in our daily service to the Lord compel those who serve at Crean Lutheran High School.

There are no "do-overs" in high school. The Crean Lutheran experience promotes an engaged student body, encouraging students to engage in Christian faith, embark on lifelong learning, and embrace a life of serving mankind. Students are encouraged to be active participants in activities, the arts, and athletics to have a robust four-year transformative experience.

Thank you for the time spent getting to know more about and considering the Crean Lutheran High School community. We hope you're led and compelled to become a member of our blessed Saints family!

In His love and mine,

DR. JEFFREY BEAVERS, ED.D., LMFT
EXECUTIVE DIRECTOR | CEO



OUR MISSION

Proclaiming Jesus Christ through Excellence in Education

CHRISTIAN FAITH

Crean Lutheran High School develops students into disciples of Christ who are knowledgeable about their faith and willing to defend their beliefs. They are encouraged to engage in classroom discussions, think critically, and communicate clearly as they develop into servant-leaders who live their lives for Jesus Christ.

I am a **CHRISTIAN**
I am a **LEARNER**
I am a **SERVANT**



CREAN LUTHERAN HIGH SCHOOL



2023 NATIONAL BLUE RIBBON SCHOOL

in the category of Exemplary High Performing Schools

OUR CAMPUS

Crean Lutheran High School is comprised of two properties. Our 18-acre main campus includes 58,000 sq. ft. of academic space, a 15,000 sq. ft. event center and gymnasium, over 12,000 sq. ft. of visual and performing arts space, a 5,000 sq. ft. strength and performance center, and multiple athletic fields. Our Athletic Complex, a 12-acre property within walking distance from the main campus, includes baseball and softball fields, sand volleyball courts, and six tennis courts.



ACADEMICS

A TRADITION OF EXCELLENCE

Crean Lutheran High School offers a rigorous and nurturing academic environment that fosters spiritual, academic, and personal growth. The dedicated faculty employs instructional approaches that create student-centered classrooms. An array of dynamic courses are led by faithful teachers who promote inquiry, nurture creative thinking, and accommodate diverse learning styles.

CONTINUING EXCELLENCE IN EDUCATION

Crean Lutheran places high value on personalized education. Accordingly, Crean Lutheran maintains a 20:1 average class size. Students may follow various academic tracks, including those designed to meet the high standards of the University of California's A-G subject requirements or those customized to meet the admission guidelines for elite private institutions. A wide array of academically rigorous honors and Advanced Placement (AP) courses and dual credit courses support these tracks.

2023 NATIONAL BLUE RIBBON SCHOOL

Crean Lutheran High School has been recognized by the U.S. Department of Education as a 2023 National Blue Ribbon School. The recognition is based on a school's overall academic performance or progress in closing achievement gaps among student groups on assessments. Crean Lutheran High School was recognized in the category of Exemplary High Performing Schools.



20:1

AVERAGE CLASS SIZE



1295

AVERAGE SAT SCORE

+235 above National Average

25.7

AVERAGE ACT SCORE

+6.2 above National Average

26

ADVANCED PLACEMENT COURSES

67

HONORS COURSES

20

DUAL CREDIT COURSES

(up to 80 college units)

MULTIPLE LEARNING OPTIONS

Students may take classes in various settings, including on-campus, online, and blended (**a combination of on-campus and online**).

Scan the QR Code or visit creanlutheran.org/academics to view the course listings.



COMPREHENSIVE SCHOOL COUNSELING

The Crean Lutheran Counseling Department proudly provides a comprehensive school counseling program. Direct and indirect services in academic planning, college and career readiness, social and emotional support, and spiritual guidance are provided to each student and family. The Counseling Department comprises six counselors who have completed Master's level coursework and are PPS credentialed by the California Commission on Teacher Credentialing (CTC).

Counselor caseloads serve an average of 184:1 student-to-counselor ratio, far below the California average of 601:1. Reduced caseloads allow counselors to provide services that meet the unique needs of each student. Crean Lutheran High School counselors diligently provide personalized four-year planning services to each student, considering their individual needs, circumstances, and preferences.

As a result of rigorous course offerings and extracurricular opportunities, graduating students engage in strenuous university-level academics at some of the nation's finest colleges, universities, and conservatories. Graduates from the Class of 2024 attend Duke, UCLA, UC Berkeley, Harvard University, USC, Baylor University, Stanford, Cornell, Northwestern, UPenn, Virginia Tech, NYU, and many other elite institutions nationwide.

184:1

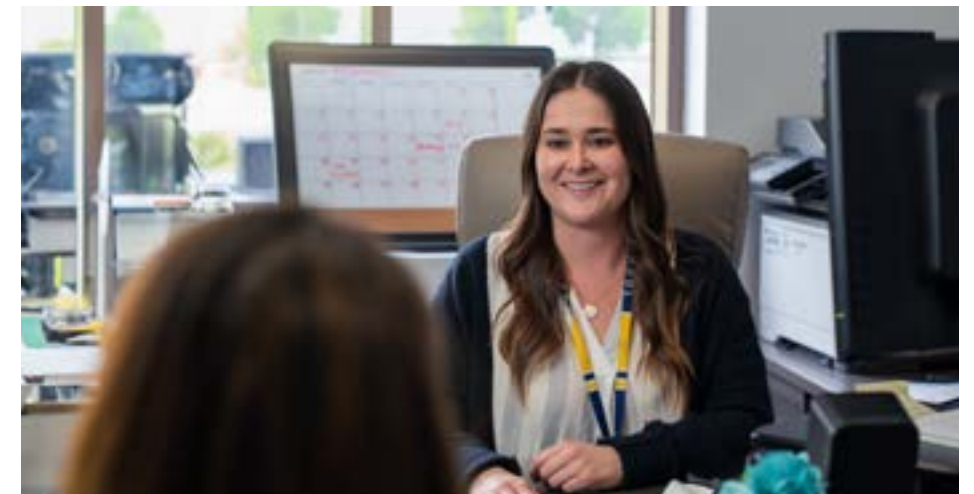
STUDENT-TO-COUNSELOR RATIO

250:1

AMERICAN SCHOOL COUNSELING ASSOCIATION RECOMMENDATION

601:1

CALIFORNIA'S AVERAGE STUDENT-TO-COUNSELOR RATIO



Yale University

Baylor University

Stanford University

Penn

UCLA

USC University of Southern California

Cornell University

VIRGINIA TECH

Berkeley

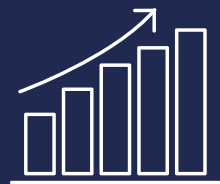
HARVARD UNIVERSITY

Northwestern University

NYU

COHORT PROGRAMS

Crean Lutheran offers four Christ-centered and scholastically rigorous cohorts that prepare students for academic and professional success in their chosen fields. Each cohort introduces students to high-level professionals, includes experiential field trips, and provides both independent research and internship opportunities. Cohort students take various dual-credit college courses, which help them become emerging leaders in a professional environment. Cohort graduates receive special recognition at graduation as well as on their transcripts. Enrollment in a cohort requires a separate application. More information is available at creanlutheran.org/cohorts.



BUSINESS COHORT

The Business Cohort develops future leaders and entrepreneurs for a global economy, preparing students for careers in marketing, finance, accounting, communication, and hospitality. The courses engage students in real-world experiences, promoting college and career success. By drafting resumes, interviewing for internships, writing business plans, building their own businesses, and learning from influential guest speakers and local business partners, students are prepared to make a difference in their lives and the world.

BUSINESS COHORT COURSES:

- Honors Introduction to Business
- Honors Communication
- Honors Marketing
- Honors Accounting
- Honors Global Business
- Honors Finance
- AP Statistics



LAW COHORT

The Law Cohort provides a launch point for students interested in pursuing careers in law, elected office, and government. The program prepares students for the rigorous analytical reading and writing requirements of the legal profession while emphasizing the philosophical foundations of law, government/political connections, and the practical aspects of legal practice. Additionally, our students will meet practicing attorneys from a variety of fields, visit elected officials and local governments, and participate in one or more competition-based activities.

LAW COHORT COURSES:

- Honors Ethics
- Honors Communications
- Honors Introduction to Law
- Honors Philosophy of Law
- Honors Speech & Debate
- AP American Government

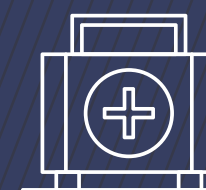


ENGINEERING COHORT

The Engineering Cohort is designed to empower students by building a strong foundation for college and a career through Project Lead the Way (PLTW) engineering courses. Students engage in interdisciplinary activities, develop critical thinking skills, and learn to collaborate with others. Through partnerships with UCI and other universities, students are exposed to a variety of engineering specializations.

ENGINEERING COHORT COURSES:

- Honors Computer Programming I and II
- AP Computer Science Principles
- Honors Introduction to Design
- Honors Principles of Engineering (PLTW)
- Honors Aerospace (PLTW)



MEDICAL COHORT

The Medical Cohort is designed for students interested in learning about health careers. The program prepares students to study various disciplines in the medical field through specialized coursework, lectures from health professionals, and field trips to medical and industrial facilities. Through partnerships with local hospitals, universities, and other medical facilities, our students are exposed to a variety of medical specialties.

MEDICAL COHORT COURSES:

- Medical Careers
- Honors Anatomy & Physiology
- Honors Sports Medicine
- Honors Medical Assisting



ATHLETICS



Crean Lutheran High School Athletics is founded upon six core values firmly rooted in the acrostic **CHRIST: Commitment, Honor, Responsibility, Integrity, Service, and Teamwork**. Saints Athletics is an educational-based athletics program that seeks to transform the lives of our student-athletes using sport as a platform. A strong athletic program that values each athlete's well-being and personal development is vital. Coaches dedicate themselves to their craft and facilitate a Christ-centered program that promotes positive character-building and upholds the proud tradition of *Proclaiming Jesus Christ through Excellence in Athletics*. Athletics is the foundation for building healthy school pride and school spirit. We encourage the participation of all students in multiple sports and activities.



26
SPORTS
OFFERED

GOVERNING BODY
**CALIFORNIA
INTERSCHOLASTIC
FEDERATION**

HEALTH AND SAFETY

Crean Lutheran has a full Sports Medicine staff to ensure student health and safety. A Director supports two full-time Athletic Trainers who serve our student-athletes and work with our UCI team Doctors to serve the needs of our student-athletes. Athletic trainers and all coaches are trained and certified to treat routine injuries and manage serious situations when needed. The health and personal safety of every Saints student-athlete is our top priority.

FALL

- Football
- Girls Tennis
- Girls Volleyball
- Girls & Boys Cross Country
- Girls Golf
- Boys Water Polo
- Boys Beach Volleyball
- Girls Flag Football

LEAGUE AFFILIATION

CENTURY CONFERENCE

Brea Olinda, Canyon, Crean Lutheran, Cypress, El Dorado, El Modena, Esperanza, Foothill, La Habra, Pacifica, Sonora, Sunny Hills, Troy, Villa Park, Yorba Linda

STRENGTH & PERFORMANCE

All Crean Lutheran athletes have access to collegiate-level weight training in the state-of-the-art Strength & Performance Center. Our dedicated strength & performance coaches design workouts that emphasize optimal athletic performance and sport-specific excellence. Even more, the coaches fine-tune workouts to meet individual needs, adjusting to the level of ability, specific training goals, and injury avoidance/recovery. Our exceptional facilities and knowledgeable coaches help athletes stay injury-free and reach their full athletic potential.

WINTER

- Girls Basketball
- Boys Basketball
- Girls Soccer
- Boys Soccer
- Girls Water Polo
- Saints Surf

DIVISION VARIES BY SPORT

SPRING

- Baseball
- Softball
- Boys Volleyball
- Boys Golf
- Boys Lacrosse
- Boys Tennis
- Girls Beach Volleyball
- Girls & Boys Swimming & Diving
- Girls & Boys Track & Field

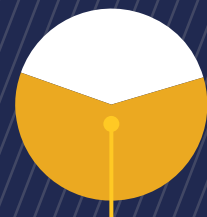
YEAR ROUND

- Sideline Cheer
- Song



65%

OF STUDENTS ARE INVOLVED WITH ATHLETICS



60%

STUDENT-ATHLETES HAD A 3.5 GPA OR BETTER

OVERALL



2023-2024 SEASON

71 LEAGUE TITLES
14 CIF TITLES
4 STATE TITLES

12 LEAGUE TITLES
2 CIF TITLES
19 TEAMS APPEARED IN PLAYOFFS

SUMMER SPORTS TRAINING

Crean Lutheran offers summer sports training for all student-athletes. This program allows students the opportunity to form strong bonds with future teammates, gain confidence, and practice before the school year begins. For more information, visit creanlutheran.org/summersports.

For questions regarding Crean Lutheran High School Athletics, please contact our Athletics Department at athletics@creanlutheran.org.





ARTS



Crean Lutheran High School supports the Visual and Performing Arts (VPA) by developing the individual creative gifts of each artist. In 2024, three Crean Lutheran students were named Artist of the Year Semifinalists by the Orange County Register. Crean Lutheran is pleased to provide diverse opportunities for VPA engagement. Students may perform in a variety of settings, including theatrical productions, instrumental concerts, choral concerts, and dance performances. Visual artists are afforded platforms to showcase their talents through exhibitions, both on and off campus. Crean Lutheran High School is committed to providing students with real-world experiences to develop and refine their respective gifts and crafts.

CHOIR

*Saints Singers (Honors after 1 Year Participation)
Honors Chamber Choir**

DANCE

*Dance I
Honors Dance II*
Honors Dance III*
Honors Dance Ensemble*
Honors Dance Company*
Hip Hop I
Honors Hip Hop II*
Honors Hip Hop III**

DRAMA

*Acting I
Honors Acting II*

INSTRUMENTAL MUSIC

*Concert Band
Honors Concert Band
Honors Music Composition
Honors Symphony Orchestra
Jazz Band
Honors Jazz Band
String Orchestra
Honors String Orchestra
Introduction to Worship Team
Worship Team
Honors Worship Team*

MEDIA STUDIES

Honors Film Studies

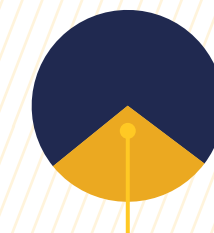
**audition required*

VISUAL ARTS

*Photography I
Honors Photography II*
Exploratory Art
Honors Exploratory Art*
Honors Advanced Studio Art*
Honors Drawing & Painting*
Honors Sculpture I*
Honors Sculpture II*
Honors Sculpture III*
AP Art: Drawing and Painting*
AP Art: 2-D*
AP Art: 3-D*
AP Art History*

2024 OC REGISTER ARTIST OF THE YEAR SEMI-FINALISTS

AIMEE CHO
Dance: Contemporary ballet
BOYAN CHEN
Art: Mixed media
STEPHANIE SOO YEON SUH
Dance: Classical ballet

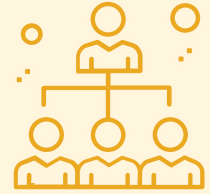


30%

OF STUDENTS ARE INVOLVED IN PERFORMING ARTS

STUDENT ACTIVITIES

SERVANT LEADERSHIP TEAM



Our Servant Leadership Team (SLT) comprises two distinct but unified programs: ASB and Link Crew. SLT-ASB provides a wide array of student activities, such as dances, pep rallies, spirit weeks, lunchtime activities, student clubs, and more. SLT-Link is our peer mentorship program where upperclassmen are trained to mentor incoming Freshmen as they transition into high school. SLT seeks to create an environment where all Crean Lutheran students are welcomed, have opportunities to get involved, and experience growth.

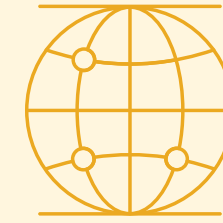
EDUCATION TECHNOLOGY



Integrating technology into the classroom setting is a hallmark of Crean Lutheran High School. All students are required to have a laptop that meets technology guidelines. From online research to group collaboration, students use their laptops daily. Crean Lutheran also encourages students to utilize available digital textbooks and the school's JSTOR subscription to collegiate-level academic journals to advance their academic pursuits. Finally, Crean Lutheran High School employs Canvas as a powerful course management system. Students can submit homework, download class content, take quizzes, communicate with teachers, and monitor grades through Canvas.



INTERNATIONAL DEPARTMENT



Crean Lutheran High School's esteemed International Department believes that the global perspective enriches the experience of our students and helps foster a learning environment that broadens

the culture. The International Department ensures high-quality and professional support and services to meet the diverse personal and academic needs of Crean Lutheran High School's international students through excellence and quality of work that honors God. The International Department aims to provide its students with an understanding of the local, diverse community, as well as the tools to become active leaders and responsible members of the increasingly interconnected, global society they will enter while equipping them to approach complex challenges ethically, thoughtfully, and spiritually. Crean Lutheran's international students have been accepted to many top universities in the U.S. as they have the opportunity to participate in college preparatory coursework such as Honors and Advanced Placement classes. Individuals interested in learning more about the international admissions process should contact the International Department at int@creanlutheran.org.

LEARNING SUCCESS PROGRAM



The Learning Success Program (LSP) assists students in excelling academically, socially, athletically, and spiritually in pursuit of the school's mission of *Proclaiming Jesus Christ through Excellence in Education*. LSP Director Mary Oliver, M.Ed., M.A. leads the program with the support of an LSP counselor and resource teachers. The program supports students with documented learning needs through accommodations and counseling so that they may achieve success. Admission into the program requires the submission of a neuropsychological evaluation, psychoeducational evaluation, or a multidisciplinary assessment. For more information, contact the Admissions Department at admissions@creanlutheran.org.

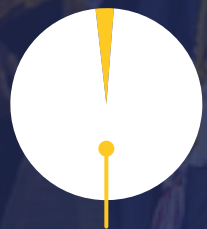


CLASS OF 2024



265
GRADUATES

OVER \$17.8 MILLION IN SCHOLARSHIPS



97%

ATTENDING A COLLEGE OR UNIVERSITY



86%

ATTENDING FOUR-YEAR UNIVERSITIES



25%

ATTENDING CHRISTIAN UNIVERSITIES



21%

ATTENDING UNIVERSITIES OF CALIFORNIA



29%

ATTENDING UNIVERSITIES RANKED IN THE TOP 50
(U.S. News & World Report)

STUDENT SUCCESS

In tandem with a comprehensive school counseling program, Crean Lutheran is pleased to offer our families access to *Navigance*, a comprehensive platform that parents and students can use to help make decisions about college and career planning. Below is a list of institutions where a few of our graduates are pursuing higher education:

ALABAMA

Auburn University
Samford University
University of Alabama

ARIZONA

Arizona State University
Arizona Christian University
Embry-Riddle Aeronautical University
Grand Canyon University
Northern Arizona University
University of Arizona

CALIFORNIA

Art Center College of Design
Azusa Pacific University
Biola University
California Baptist University
California Institute of Technology
California Lutheran University
California State Polytechnic, Pomona
California State Polytechnic, San Luis Obispo
Chapman University
Concordia University Irvine
Loyola Marymount University
Masters University
Occidental College
Otis College of Art and Design
Pepperdine University
Point Loma Nazarene University
Pomona College
San Diego Christian College
San Diego State University
Stanford University
University of California, Berkeley
University of California, Davis
University of California, Irvine
University of California, Los Angeles
University of California, Riverside
University of California, San Diego
University of California, Santa Barbara
University of California, Santa Cruz
University of Southern California
Vanguard University
Westmont College

COLORADO

Colorado State University
The United States Air Force Academy
University of Colorado

CONNECTICUT

University of Connecticut
Yale University

FLORIDA

Embry-Riddle Aeronautical University

GEORGIA

Emory University
Georgia Tech University

HAWAII

Chaminade University of Honolulu
University of Hawaii-Manoa

IDAHO

Boise State
The College of Idaho

ILLINOIS

Northwestern University
School of the Art Institute of Chicago
University of Illinois, Urbana-Champaign
Wheaton College

INDIANA

Purdue University
University of Notre Dame

MASSACHUSETTS

Berklee College of Music
Boston College
Boston University
Emerson College
Harvard University
Massachusetts Institute of Technology
New England Conservatory of Music
Northeastern University
Smith College
Tufts University

MARYLAND

Johns Hopkins University
Maryland Institute College of Art

MICHIGAN

University of Michigan
Michigan State University

NEW JERSEY

Monmouth University
Princeton University
Seton Hall

NEW YORK

Columbia University
Cornell University
New York University
Parsons School of Design
School of Visual Arts
Stony Brook University
Syracuse University
The Juilliard School
United States Military Academy, West Point
University of Buffalo
University of Rochester

NORTH CAROLINA

Duke University
Elon University
University of North Carolina, Chapel Hill

OHIO

Case Western Reserve University
Ohio State University

OREGON

George Fox University
University of Oregon
Willamette University

PENNSYLVANIA

Bucknell University
Carnegie Mellon University
Lehigh University
Penn State
University of Pennsylvania
University of Pittsburgh
Villanova University

RHODE ISLAND

Brown University
Rhode Island School of Design

SOUTH CAROLINA

Clemson University

TENNESSEE

Lipscomb University
Milligan University
Vanderbilt University

TEXAS

Baylor University
Dallas Baptist University
Rice University
Southern Methodist University
Texas A&M University
Texas Christian University
University of Texas, Austin

UTAH

The University of Utah
Southern Utah University
Utah State University

VIRGINIA

College of William and Mary
Virginia Tech

WASHINGTON

Gonzaga University
Pacific Lutheran University
Seattle Pacific University
University of Washington

WASHINGTON DC

Catholic University of America
Georgetown University
George Washington University
Washington University in St. Louis

WISCONSIN

Marquette University
University of Wisconsin, Madison

CANADA

University of British Columbia
University of Toronto

JAPAN

Keio University
Waseda University

KOREA

Korea Advanced Institute of Science & Technology (KAIST)
Korea University
Seoul National University
Yonsei University

UNITED KINGDOM

University of Oxford

CREAN LUTHERAN HIGH SCHOOL



BE A SAINT FOR A DAY!

Crean Lutheran High School cordially invites all 8th-grade and transfer students interested in attending Crean Lutheran to spend a day on campus. Prospective students will be partnered with current Crean Lutheran students, who will introduce them to the Crean Lutheran community. To schedule a Shadow Day, please go to the Shadow Day link on the Admissions page at creanlutheran.org/admissions.

For any questions regarding admission to Crean Lutheran High School, please contact the Admissions Director, Tara Mathis, at (949) 387-1199 ext. 2417 or email tara.mathis@creanlutheran.org.

For questions regarding international admission, please email int@creanlutheran.org.

ADMISSIONS

APPLICATION STEPS

The Admissions Committee reviews each applicant holistically, considering each student's unique gifts and talents.

- 1 Complete the online application and submit the **\$75** application fee by visiting creanlutheran.org/apply or scanning the QR Code.
- 2 Complete the application checklist in the student application portal.



FINANCIAL ASSISTANCE

Crean Lutheran High School views financial aid as a partnership between families and the school. Financial aid awards are based on financial need and available funds. To be considered for financial aid, a family must first apply for admission and then apply for financial assistance, which can be found at creanlutheran.org/admissions.

TUITION & FEES

The Crean Lutheran Board of Directors, administration, faculty, and staff value Christian stewardship. Accordingly, tuition dollars are a blessing that Crean Lutheran strives to use wisely and efficiently to avoid unnecessary increases. The scheduled tuition for the 2025-2026 school year is **\$22,240**.

Additional costs include a registration fee, books, uniforms, and special program fees. Crean Lutheran estimates books will cost an average of \$420 per year, and uniforms will likely cost an initial \$400-500. Athletics, Performing Arts, Cohorts, and other program fees vary. A summary of tuition and various fees can be found at creanlutheran.org/tuition.





**CREAN LUTHERAN
HIGH SCHOOL**

Proclaiming Jesus Christ through Excellence in Education

12500 Sand Canyon Avenue, Irvine, CA 92618
(949) 387-1199

admissions@creanlutheran.org
creanlutheran.org