



Daniel P. King, Ph.D.
Executive Director

Region One Education Service Center

1900 W. Schunior, Edinburg, TX 78541 ♦ Ph (956) 984-6000 ♦ Fax (956) 984-7655

TO: Child Nutrition Program – South Texas Cooperative (CNP-STC) Members

FROM: Lori Atwood Ramos, Director- Purchasing

SUBJECT: Child Nutrition Program-South Texas Cooperative Dairy and Juice Products RFP 23-0135 Addendum

DATE: August 16, 2024

Please note the juice price changes as of August 1, 2024, reflected below to the Dairy & Juice Products RFP 23-0132, Addendum 4. Changes apply to *DFA Dairy Brands dba Oak Farms Dairy/Hygeia Dairy*.
Enclosed is backup documentation provided by the vendor.

District	Changes/Additions
Brownsville ISD	Item 60963 - Price increase from \$0.2598 to \$0.2898.
Edcouch - Elsa	Price increase from \$0.2398 to \$0.3006 Price increase from \$0.2481 to \$0.3089. Price increase from \$0.2789 to \$0.3089.
Edinburg CISD	*Strawberry milk pricing is available for SY 2024-2025.
Harlingen CISD	Item 60963 price increase from \$0.2706 to \$0.3006. Item 62900 price increase from \$0.2789 to \$0.3089. Item 56055 price increase from \$0.2789 to \$0.3089. *Strawberry milk pricing is available for SY 2024-2025.
IDEA Public Schools	Item 60963 price increase from \$0.2683 to \$0.2983. Item 62900 price increase from \$0.2707 to \$0.3007. Item 56055 price increase from \$0.2694 to \$0.3007. Item 56625 price increase from \$2.278 to \$2.5180
La Feria ISD	Item 60963 price increase from \$0.2706 to \$0.3006. Item 62900 price increase from \$0.2789 to \$0.3089. Item 56055 price increase from \$0.2789 to \$0.3089. *Strawberry milk pricing is available for SY 2024-2025.
La Joya ISD	Item 60963 - Price increase from \$0.2683 to \$0.2983. Item 62900 - Price increase from \$0.2707 to \$0.3007. Apple Juice Alt - Price increase from \$0.2707 to \$0.3007. Item 70245 added to meet new feeding style, 5 gal. bags. Item 22827 added to meet new feeding style, 5 gal. bags. *Strawberry milk pricing is available for SY 2024-2025.
La Villa ISD	Item 60963 - Price increase from \$0.2706 to \$0.3006. Item 62900 - Price increase from \$0.2789 to \$0.3089. Item 56055 - Price increase from \$0.2789 to \$ 0.3089. *Strawberry milk pricing is available for SY 2024-2025.

Laredo ISD	Item 62900 - Price increase from \$0.2707 to \$0.3007. *Strawberry milk pricing is available for SY 2024-2025.
McAllen ISD	Item 60963 - Price increase from \$0.2706 to \$0.3006. Item 62900 - Price increase from \$0.2789 to \$0.3089. Item 56055 - Price increase from \$0.2789 to \$0.3089. Item added to offer flavor variety to students; strawberry milk.
Mission CISD	Item 60963 - Price increase from \$0.2706 to \$0.3006. *Strawberry milk pricing is available for SY 2024-2025.
Pharr-San Juan-Alamo (PSJA) ISD	Item 60963 - Price increase from \$0.2683 to \$ 0.2983. Item 62900 -Price increase from \$0.2707 to \$0.3007. Item 56055 - Price increase \$0.2707 to \$0.3007. Item 71241 was added to fit the needs of the school district's menu. Item 56742 was added to fit the needs of the school district's menu. Item 56743 was added to fit the needs of the school district's menu. Item 21414 was added to fit the needs of the school district's menu.
Point Isabel ISD	Item 60963 price increase from \$0.2411 to \$0.2711. Item added to offer flavor variety to students; strawberry milk.
Sharyland ISD	Item 60963 price increase from \$0.2706 to \$0.3006. Item 62900 price increase from \$0.2789 to \$0.3089.
Valley View ISD	Item 60963 - Price increase from \$0.2706 to \$0.3006. Item 62900 - Price increase from \$0.2789 to \$0.3089.
Weslaco ISD	Item 60963 - Price increase from \$0.2706 to \$0.3006. *Strawberry milk pricing is available for SY 2024-2025.
Vanguard Academy	*Strawberry milk pricing is available for SY 2024-2025.

Pricing for dairy products is subject to monthly escalation/de-escalation based on the Federal Milk Marketing Order (FMMO) as published by the USDA, juice and other product pricing is firm. For your convenience, the order guide has been revised and posted on the CNP-STC Webpage at www.escl.net/southtexascoop, Awarded Bids & Proposals.

For additional information or questions, please contact the South Texas Cooperative at eBuyOne@escl.net:

Lori Atwood Ramos, Purchasing Director, Phone: 956.984.6123
 Kristina C. Escobar, Buyer Cooperative Purchasing, Phone: 956.984.6012
 Roberto Meave, Buyer Cooperative Purchasing, Phone: 956.984.6249
 Daisy Cuevas, Buyer Cooperative Purchasing, Phone: 956.984.6217
 Idania Gonzalez, Purchasing Technician, Phone: 956. 984.6204



June 28, 2024

Region One ESC
1900 W Schunior
Edinburg, Texas 78541
Attention: Kristina Carrizales Escobar

Orange Juice Increase Documentation

Kristina

As you will read the juice market continues to experience a period of volatility caused by weather, disease, and real estate growth.... contributing to unseen increases.

I have attached the information as follows:

- Orange Juice Market Condition/Trend
- Citrusuco- Orange Juice supplier increases – **July/August 2024**
- Graph showing Frozen Concentrate Orange Juice movement.
- Juice Pricing per Month

As agreed upon here is the supporting documentation 30 days prior to the increase.

Please reach out if you have any questions.

As always... thank you for all you do!

Israel Rios
Director of Sales
DFA Dairy Brands dba Oak Farms Dairy/Hygeia Dairy

Oak Farms Dairy
1314 Fredicksburg Road
San Antonio, TX 78201
(210) 732-1111

Oak Farms Dairy
1819 Rutland Dr
Austin, Texas 78758
(512) 837-2685

Hygeia Dairy - McAllen
525 Beaumont
McAllen, TX 78501
(956) 686-0511

Hygeia Dairy - Corpus
2525 Hygeia
Corpus Christi, TX 78415
(361) 854-4561

Hygeia Dairy - Laredo
8119 San Dario
Laredo, TX 78645
(956) 722-1718

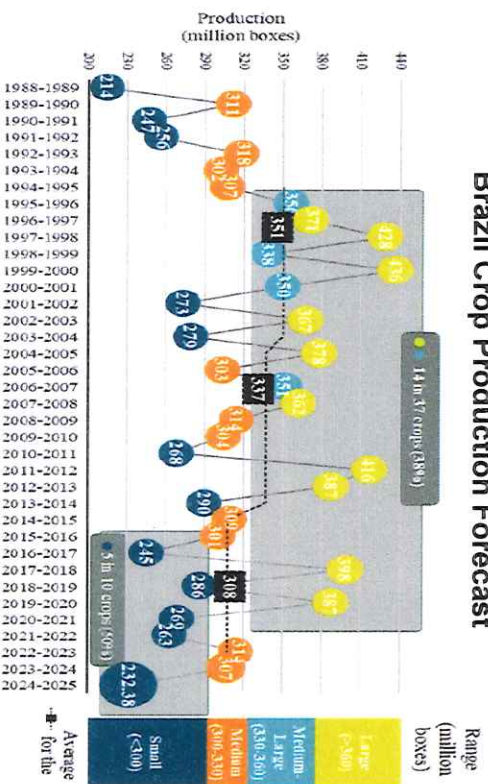
The largest production of orange crop in the world is predicted to be the lowest in 36 years



**2024-2025 ORANGE CROP FORECAST BY SECTOR²
AND COMPARISON TO THE PREVIOUS CROP SEASON**
Total: 232.38 million boxes of 40.8 kg (90 pounds) (-24.4%)



Brazil Crop Production Forecast



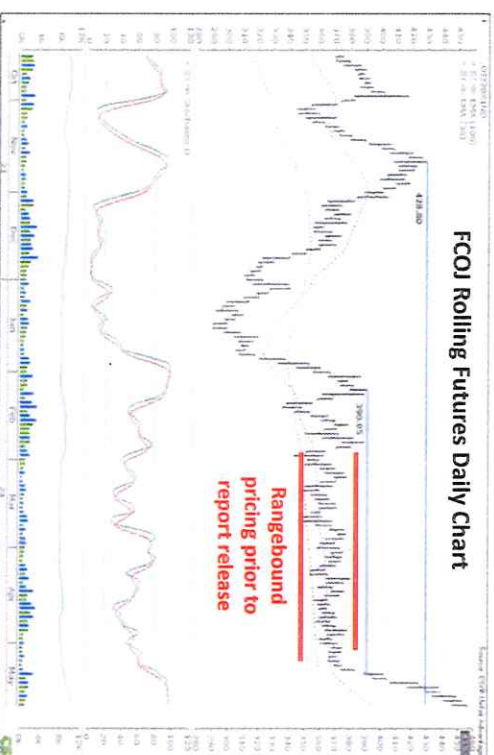
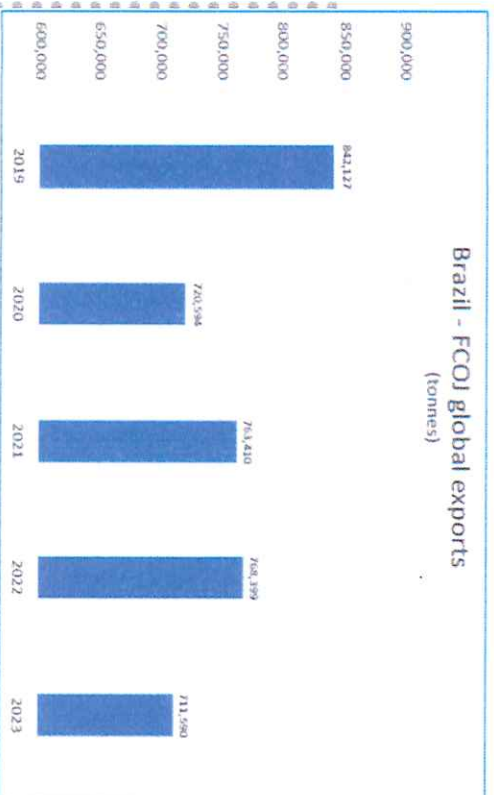
Graph 1 - Orange production from 1988-1989 to 2023-2024 and 2024-2025 crop forecast
Sources: CiniSBR (1988-1989 to 2014-2015) and Fundectrus (2015-2016 to 2024-2025)

- The production forecast for Brazil came in much lower than expected at just over 232 million boxes vs. 307 million boxes last year
- Extreme heat in September had a negative impact of the crop despite vigorous replanting by growers
- All of the growing areas of Brazil were impacted, especially the North and Northwest at 47% and 59.5% lower production vs. last year
- In addition, the Florida crop is estimated to be at 17.8 million boxes, which is also 1 million boxes lower than first predicted

Sources: Fundectrus, Juice Market



FCOJ futures pricing has propelled out the range it was trading in prior to the release of the Brazil production report



- Brazil produces 70% of the world orange juice so they are by far the largest producing and exporting country

- The quality of the fruit is also of concern; Mexico's crop is coming in at a higher ratio that is out of the FCOJ specification range

- After rangebound pricing on the ICE futures exchange for nine weeks, pricing has broken out to the upside from a range of \$3.65 to \$3.80/lb. solid to the \$4.20 lb. solid to \$4.80/lb. solid range

- More price increases are possible with this dire supply picture and suppliers are likely to place customers on allocation or cut them off altogether

Commodity Futures Price Quotes For Orange Juice (ICE Futures)
(Price quotes for ICE Futures Orange Juice delayed at least 10 minutes.)

Contract	Open	High	Low	Last	Current Session	Time
Cash	427.80	427.80	427.80	427.80		20:47 Jun 17
Jul'24	427.30	434.95	423.40	423.45		10:21 Jun 18
Sep'24	424.70	432.00	420.30	420.45		10:21 Jun 18
Nov'24	424.25	425.75	421.50	421.50		10:00 Jun 18
Jan'25	416.00	416.00	415.95	416.00		08:04 Jun 18

Sources: Fundedicus, Juice Market, McKeany Flavell



Citrosuco North America, Inc.
5937 Highway 60 East
Lake Wales • Florida
USA • 33898
Phone: +1 863 696 7400


www.citrosuco.com

6/19/2024

To:
Michael Miller
Montel Brown

Citrosuco will be increasing the price of FCOJ by \$0.7019 cents/PS for Jul/Aug 2024 based on FCOJ Futures pricing. The premium is \$0.35 cents/PS which is \$0.16/PS more than prior period. Please let us know if you have any questions.

Thank you!

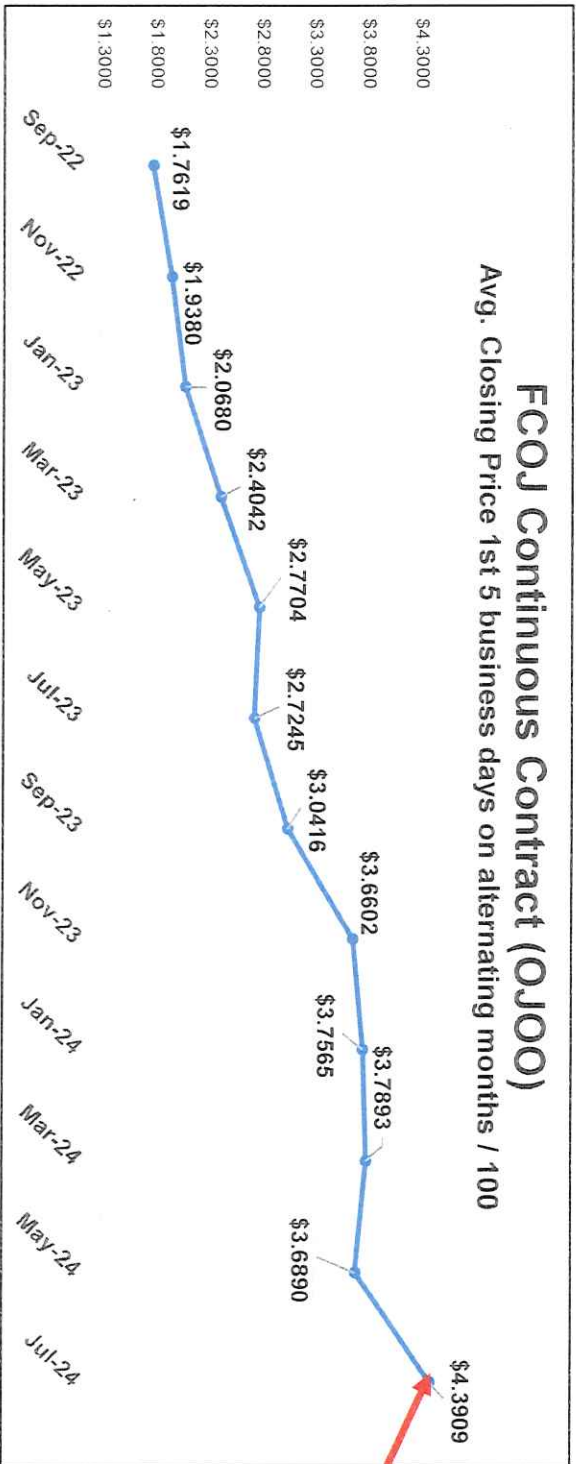
X 

Katerina De La Rosa
Sales Manager, Sales N.A.

FCOJ Futures Market – Continuous Contract

Montel Brown

Internal



**\$0.7019/PS increase
 +19% increase vs prior
 price**

REGION 1 - JUICE PRICING
EFFECTIVE: AUGUST 1, 2024

PRICE GROUP: 0023 POINT ISABEL (REG 1)

				JUL.24	MOVE	AUG.24
56055	ARDMORE JC 100% APL	4FZ Cbox	70	\$ 0.2494	\$ 0.0300	\$ 0.2794
62900	OF JC APL PP 75/CS	4FZ Case	75	\$ 0.2494	\$ 0.0300	\$ 0.2794
60963	OF OJ PP 75/CS	4FZ Case	75	\$ 0.2411	\$ 0.0300	\$ 0.2711
50977	ARDMORE JC ORG PP	4FZ Cbox	70	\$ 0.2411	\$ 0.0300	\$ 0.2711
50978	ARDMORE JC APL PP	4FZ Cbox	70	\$ 0.2494	\$ 0.0300	\$ 0.2794
62557	ARDMORE JC TROP PNCH W CALM PP	4.23 Case	44	\$ 0.2495	\$ 0.0317	\$ 0.2812
62555	ARDMORE JC APL W CALC PP	4.23 Case	44	\$ 0.2495	\$ 0.0317	\$ 0.2812
62556	ARDMORE JC GRP W CALC PP	4.23 Case	44	\$ 0.2495	\$ 0.0317	\$ 0.2812

PRICE GROUP: 00525 HARLINGEN ISD (REG 1)

				JUL.24	MOVE	AUG.24
56055	ARDMORE JC 100% APL	4FZ Cbox	70	\$ 0.2789	\$ 0.0300	\$ 0.3089
62900	OF JC APL PP 75/CS	4FZ Case	75	\$ 0.2789	\$ 0.0300	\$ 0.3089
60963	OF OJ PP 75/CS	4FZ Case	75	\$ 0.2706	\$ 0.0300	\$ 0.3006
50977	ARDMORE JC ORG PP	4FZ Cbox	70	\$ 0.3126	\$ 0.0300	\$ 0.3426
50978	ARDMORE JC APL PP	4FZ Cbox	70	\$ 0.3209	\$ 0.0300	\$ 0.3509
62557	ARDMORE JC TROP PNCH W CALM PP	4.23 Case	44	\$ 0.2910	\$ 0.0317	\$ 0.3227
62555	ARDMORE JC APL W CALC PP	4.23 Case	44	\$ 0.2910	\$ 0.0317	\$ 0.3227
62556	ARDMORE JC GRP W CALC PP	4.23 Case	44	\$ 0.2910	\$ 0.0317	\$ 0.3227

PRICE GROUP: 0029 LA FERIA ISD (REG 1)

				JUL.24	MOVE	AUG.24
56055	ARDMORE JC 100% APL	4FZ Cbox	70	\$ 0.2789	\$ 0.0300	\$ 0.3089
62900	OF JC APL PP 75/CS	4FZ Case	75	\$ 0.2789	\$ 0.0300	\$ 0.3089
60963	OF OJ PP 75/CS	4FZ Case	75	\$ 0.2706	\$ 0.0300	\$ 0.3006
50977	ARDMORE JC ORG PP	4FZ Cbox	70	\$ 0.3126	\$ 0.0300	\$ 0.3426
50978	ARDMORE JC APL PP	4FZ Cbox	70	\$ 0.3209	\$ 0.0300	\$ 0.3509
62557	ARDMORE JC TROP PNCH W CALM PP	4.23 Case	44	\$ 0.2910	\$ 0.0317	\$ 0.3227
62555	ARDMORE JC APL W CALC PP	4.23 Case	44	\$ 0.2910	\$ 0.0317	\$ 0.3227
62556	ARDMORE JC GRP W CALC PP	4.23 Case	44	\$ 0.2910	\$ 0.0317	\$ 0.3227

REGION 1 - JUICE PRICING
EFFECTIVE: AUGUST 1, 2024

PRICE GROUP: 0049 SHARYLAND ISD (REG 1)

				JUL.24	MOVE	AUG.24
56055	ARDMORE JC 100% APL	4FZ Cbox	70	\$ 0.2789	\$ 0.0300	\$ 0.3089
62900	OF JC APL PP 75/CS	4FZ Case	75	\$ 0.2789	\$ 0.0300	\$ 0.3089
60963	OF OJ PP 75/CS	4FZ Case	75	\$ 0.2706	\$ 0.0300	\$ 0.3006
50977	ARDMORE JC ORG PP	4FZ Cbox	70	\$ 0.3126	\$ 0.0300	\$ 0.3426
50978	ARDMORE JC APL PP	4FZ Cbox	70	\$ 0.3209	\$ 0.0300	\$ 0.3509
62557	ARDMORE JC TROP PNCH W CALM PP	4.23 Case	44	\$ 0.2910	\$ 0.0317	\$ 0.3227
62555	ARDMORE JC APL W CALC PP	4.23 Case	44	\$ 0.2910	\$ 0.0317	\$ 0.3227
62556	ARDMORE JC GRP W CALC PP	4.23 Case	44	\$ 0.2910	\$ 0.0317	\$ 0.3227

PRICE GROUP: 0050 IDEA (RGV) (REG 1)

				JUL.24	MOVE	AUG.24
56625	OP OF OJ 100% FR CON PL 12/CS	QT Case	12	\$ 2.2780	\$ 0.2400	\$ 2.5180
56055	ARDMORE JC 100% APL	4FZ Cbox	70	\$ 0.2707	\$ 0.0300	\$ 0.3007
62900	OF JC APL PP 75/CS	4FZ Case	75	\$ 0.2707	\$ 0.0300	\$ 0.3007
60963	OF OJ PP 75/CS	4FZ Case	75	\$ 0.2683	\$ 0.0300	\$ 0.2983
50977	ARDMORE JC ORG PP	4FZ Cbox	70	\$ 0.3103	\$ 0.0300	\$ 0.3403
50978	ARDMORE JC APL PP	4FZ Cbox	70	\$ 0.3127	\$ 0.0300	\$ 0.3427
62557	ARDMORE JC TROP PNCH W CALM PP	4.23 Case	44	\$ 0.2828	\$ 0.0317	\$ 0.3145
62555	ARDMORE JC APL W CALC PP	4.23 Case	44	\$ 0.2828	\$ 0.0317	\$ 0.3145
62556	ARDMORE JC GRP W CALC PP	4.23 Case	44	\$ 0.2828	\$ 0.0317	\$ 0.3145

PRICE GROUP: 0054 PSJA (REG 1)

				JUL.24	MOVE	AUG.24
56577	OP OF OJ 100% FR CON PL 4/CS	GL Case	4	\$ 6.3620	\$ 0.9600	\$ 7.3220
56596	OP OF OJ 100% FR CON PL 9/CS	HG Case	9	\$ 3.2560	\$ 0.4800	\$ 3.7360
56625	OP OF OJ 100% FR CON PL 12/CS	QT Case	12	\$ 2.2780	\$ 0.2400	\$ 2.5180
56055	ARDMORE JC 100% APL	4FZ Cbox	70	\$ 0.2707	\$ 0.0300	\$ 0.3007
62900	OF JC APL PP 75/CS	4FZ Case	75	\$ 0.2707	\$ 0.0300	\$ 0.3007
60963	OF OJ PP 75/CS	4FZ Case	75	\$ 0.2683	\$ 0.0300	\$ 0.2983
50977	ARDMORE JC ORG PP	4FZ Cbox	70	\$ 0.3103	\$ 0.0300	\$ 0.3403
50978	ARDMORE JC APL PP	4FZ Cbox	70	\$ 0.3127	\$ 0.0300	\$ 0.3427

REGION 1 - JUICE PRICING
EFFECTIVE: AUGUST 1, 2024

62557	ARDMORE JC TROP PNCH W CALM PP	4.23	Case	44	\$	0.2828	\$	0.0317	\$	0.3145
62555	ARDMORE JC APL W CALC PP	4.23	Case	44	\$	0.2828	\$	0.0317	\$	0.3145
62556	ARDMORE JC GRP W CALC PP	4.23	Case	44	\$	0.2828	\$	0.0317	\$	0.3145

PRICE GROUP: 0078 MCALLEN ISD (REG 1)

					JUL.24	MOVE	AUG.24			
56577	OP OF OJ 100% FR CON PL 4/CS	GL	Case	4	\$	6.0228	\$	0.9600	\$	6.9828
56612	OP OF OJ 100% FR CON PL 20/CS	PT	Case	20	\$	1.1216	\$	0.1200	\$	1.2416
56055	ARDMORE JC 100% APL	4FZ	Cbox	70	\$	0.2789	\$	0.0300	\$	0.3089
62900	OF JC APL PP 75/CS	4FZ	Case	75	\$	0.2789	\$	0.0300	\$	0.3089
60963	OF OJ PP 75/CS	4FZ	Case	75	\$	0.2706	\$	0.0300	\$	0.3006
50977	ARDMORE JC ORG PP	4FZ	Cbox	70	\$	0.3126	\$	0.0300	\$	0.3426
50978	ARDMORE JC APL PP	4FZ	Cbox	70	\$	0.3209	\$	0.0300	\$	0.3509
62557	ARDMORE JC TROP PNCH W CALM PP	4.23	Case	44	\$	0.2910	\$	0.0317	\$	0.3227
62555	ARDMORE JC APL W CALC PP	4.23	Case	44	\$	0.2910	\$	0.0317	\$	0.3227
62556	ARDMORE JC GRP W CALC PP	4.23	Case	44	\$	0.2910	\$	0.0317	\$	0.3227

PRICE GROUP: 0104 LAREDO (REG 1)

					JUL.24	MOVE	AUG.24			
56577	OP OF OJ 100% FR CON PL 4/CS	GL	Case	4	\$	6.4620	\$	0.9600	\$	7.4220
56055	ARDMORE JC 100% APL	4FZ	Cbox	70	\$	0.2707	\$	0.0300	\$	0.3007
62900	OF JC APL PP 75/CS	4FZ	Case	75	\$	0.2707	\$	0.0300	\$	0.3007
60963	OF OJ PP 75/CS	4FZ	Case	75	\$	0.2683	\$	0.0300	\$	0.2983
50977	ARDMORE JC ORG PP	4FZ	Cbox	70	\$	0.3103	\$	0.0300	\$	0.3403
50978	ARDMORE JC APL PP	4FZ	Cbox	70	\$	0.3127	\$	0.0300	\$	0.3427
62557	ARDMORE JC TROP PNCH W CALM PP	4.23	Case	44	\$	0.2828	\$	0.0317	\$	0.3145
62555	ARDMORE JC APL W CALC PP	4.23	Case	44	\$	0.2828	\$	0.0317	\$	0.3145
62556	ARDMORE JC GRP W CALC PP	4.23	Case	44	\$	0.2828	\$	0.0317	\$	0.3145

PRICE GROUP: 0142 WESLACO (REG 1)

					JUL.24	MOVE	AUG.24			
56577	OP OF OJ 100% FR CON PL 4/CS	GL	Case	4	\$	6.3204	\$	0.9600	\$	7.2804
56596	OP OF OJ 100% FR CON PL 9/CS	HG	Case	9	\$	3.2560	\$	0.4800	\$	3.7360
56625	OP OF OJ 100% FR CON PL 12/CS	QT	Case	12	\$	2.2780	\$	0.2400	\$	2.5180

**REGION 1 - JUICE PRICING
EFFECTIVE: AUGUST 1, 2024**

56055	ARDMORE JC 100% APL	4FZ Cbox 70	\$ 0.2707	\$ 0.0300	\$ 0.3007
62900	OF JC APL PP 75/CS	4FZ Case 75	\$ 0.2707	\$ 0.0300	\$ 0.3007
60963	OF OJ PP 75/CS	4FZ Case 75	\$ 0.2706	\$ 0.0300	\$ 0.3006
50977	ARDMORE JC ORG PP	4FZ Cbox 70	\$ 0.3126	\$ 0.0300	\$ 0.3426
50978	ARDMORE JC APL PP	4FZ Cbox 70	\$ 0.3127	\$ 0.0300	\$ 0.3427
62557	ARDMORE JC TROP PNCH W CALM PP	4.23 Case 44	\$ 0.2828	\$ 0.0317	\$ 0.3145
62555	ARDMORE JC APL W CALC PP	4.23 Case 44	\$ 0.2828	\$ 0.0317	\$ 0.3145
62556	ARDMORE JC GRP W CALC PP	4.23 Case 44	\$ 0.2828	\$ 0.0317	\$ 0.3145

PRICE GROUP: 0510 BROWNSVILLE (REG 1)

			JUL.24	MOVE	AUG.24
56055	ARDMORE JC 100% APL	4FZ Cbox 70	\$ 0.2707	\$ 0.0300	\$ 0.3007
62900	OF JC APL PP 75/CS	4FZ Case 75	\$ 0.2707	\$ 0.0300	\$ 0.3007
60963	OF OJ PP 75/CS	4FZ Case 75	\$ 0.2598	\$ 0.0300	\$ 0.2898
50977	ARDMORE JC ORG PP	4FZ Cbox 70	\$ 0.3018	\$ 0.0300	\$ 0.3318
50978	ARDMORE JC APL PP	4FZ Cbox 70	\$ 0.3127	\$ 0.0300	\$ 0.3427
62557	ARDMORE JC TROP PNCH W CALM PP	4.23 Case 44	\$ 0.2828	\$ 0.0317	\$ 0.3145
62555	ARDMORE JC APL W CALC PP	4.23 Case 44	\$ 0.2828	\$ 0.0317	\$ 0.3145
62556	ARDMORE JC GRP W CALC PP	4.23 Case 44	\$ 0.2828	\$ 0.0317	\$ 0.3145

PRICE GROUP: 0884 WEBB CISD (REG 1)

			JUL.24	MOVE	AUG.24
56055	ARDMORE JC 100% APL	4FZ Cbox 70	\$ 0.2789	\$ 0.0300	\$ 0.3089
62900	OF JC APL PP 75/CS	4FZ Case 75	\$ 0.2789	\$ 0.0300	\$ 0.3089
60963	OF OJ PP 75/CS	4FZ Case 75	\$ 0.3006	\$ 0.0300	\$ 0.3306
50977	ARDMORE JC ORG PP	4FZ Cbox 70	\$ 0.3426	\$ 0.0300	\$ 0.3726
50978	ARDMORE JC APL PP	4FZ Cbox 70	\$ 0.3209	\$ 0.0300	\$ 0.3509
62557	ARDMORE JC TROP PNCH W CALM PP	4.23 Case 44	\$ 0.2910	\$ 0.0317	\$ 0.3227
62555	ARDMORE JC APL W CALC PP	4.23 Case 44	\$ 0.2910	\$ 0.0317	\$ 0.3227
62556	ARDMORE JC GRP W CALC PP	4.23 Case 44	\$ 0.2910	\$ 0.0317	\$ 0.3227

**REGION 1 - JUICE PRICING
EFFECTIVE: AUGUST 1, 2024**

PRICE GROUP: 1024 LONDON ISD (REG 2)

				JUL.24	MOVE	AUG.24
62900	OF JC APL PP 75/CS	4FZ	Case 75	\$ 0.3213	\$ 0.0300	\$ 0.3513
60963	OF OJ PP 75/CS	4FZ	Case 75	\$ 0.3113	\$ 0.0300	\$ 0.3413
62557	ARDMORE JC TROP PNCH W CALM PP	4.23	Case 44	\$ 0.3714	\$ 0.0317	\$ 0.4031
62555	ARDMORE JC APL W CALC PP	4.23	Case 44	\$ 0.3714	\$ 0.0317	\$ 0.4031
62556	ARDMORE JC GRP W CALC PP	4.23	Case 44	\$ 0.3714	\$ 0.0317	\$ 0.4031

PRICE GROUP: 1085 LA VILLA ISD (REG 1)

				JUL.24	MOVE	AUG.24
56055	ARDMORE JC 100% APL	4FZ	Cbox 70	\$ 0.2789	\$ 0.0300	\$ 0.3089
62900	OF JC APL PP 75/CS	4FZ	Case 75	\$ 0.2789	\$ 0.0300	\$ 0.3089
60963	OF OJ PP 75/CS	4FZ	Case 75	\$ 0.2706	\$ 0.0300	\$ 0.3006
50977	ARDMORE JC ORG PP	4FZ	Cbox 70	\$ 0.3126	\$ 0.0300	\$ 0.3426
50978	ARDMORE JC APL PP	4FZ	Cbox 70	\$ 0.3209	\$ 0.0300	\$ 0.3509
62557	ARDMORE JC TROP PNCH W CALM PP	4.23	Case 44	\$ 0.2910	\$ 0.0317	\$ 0.3227
62555	ARDMORE JC APL W CALC PP	4.23	Case 44	\$ 0.2910	\$ 0.0317	\$ 0.3227
62556	ARDMORE JC GRP W CALC PP	4.23	Case 44	\$ 0.2910	\$ 0.0317	\$ 0.3227

PRICE GROUP: 1531 EDINBURG ISD (REG 1)

				JUL.24	MOVE	AUG.24
56055	ARDMORE JC 100% APL	4FZ	Cbox 70	\$ 0.2707	\$ 0.0300	\$ 0.3007
62900	OF JC APL PP 75/CS	4FZ	Case 75	\$ 0.2707	\$ 0.0300	\$ 0.3007
60963	OF OJ PP 75/CS	4FZ	Case 75	\$ 0.2683	\$ 0.0300	\$ 0.2983
50977	ARDMORE JC ORG PP	4FZ	Cbox 70	\$ 0.3103	\$ 0.0300	\$ 0.3403
50978	ARDMORE JC APL PP	4FZ	Cbox 70	\$ 0.3127	\$ 0.0300	\$ 0.3427
62557	ARDMORE JC TROP PNCH W CALM PP	4.23	Case 44	\$ 0.2828	\$ 0.0317	\$ 0.3145
62555	ARDMORE JC APL W CALC PP	4.23	Case 44	\$ 0.2828	\$ 0.0317	\$ 0.3145
62556	ARDMORE JC GRP W CALC PP	4.23	Case 44	\$ 0.2828	\$ 0.0317	\$ 0.3145

PRICE GROUP: 1759 MISSION ISD (REG 1)

				JUL.24	MOVE	AUG.24
56577	OP OF OJ 100% FR CON PL 4/CS	GL	Case 4	\$ 6.0228	\$ 0.9600	\$ 6.9828
56612	OP OF OJ 100% FR CON PL 20/CS	PT	Case 20	\$ 1.1216	\$ 0.1200	\$ 1.2416
56055	ARDMORE JC 100% APL	4FZ	Cbox 70	\$ 0.2789	\$ 0.0300	\$ 0.3089

**REGION 1 - JUICE PRICING
EFFECTIVE: AUGUST 1, 2024**

62900	OF JC APL PP 75/CS	4FZ	Case	75	\$	0.2789	\$	0.0300	\$	0.3089
60963	OF OJ PP 75/CS	4FZ	Case	75	\$	0.2706	\$	0.0300	\$	0.3006
50977	ARDMORE JC ORG PP	4FZ	Cbox	70	\$	0.3126	\$	0.0300	\$	0.3426
50978	ARDMORE JC APL PP	4FZ	Cbox	70	\$	0.3209	\$	0.0300	\$	0.3509
62557	ARDMORE JC TROP PNCH W CALM PP	4.23	Case	44	\$	0.2910	\$	0.0317	\$	0.3227
62555	ARDMORE JC APL W CALC PP	4.23	Case	44	\$	0.2910	\$	0.0317	\$	0.3227
62556	ARDMORE JC GRP W CALC PP	4.23	Case	44	\$	0.2910	\$	0.0317	\$	0.3227

PRICE GROUP: 1760 EDCOUCH-ELSA (REG 1)

					JUL.24	MOVE	AUG.24			
56577	OP OF OJ 100% FR CON PL 4/CS	GL	Case	4	\$	6.3620	\$	0.9600	\$	7.3220
56596	OP OF OJ 100% FR CON PL 9/CS	HG	Case	9	\$	3.2460	\$	0.4800	\$	3.7260
56625	OP OF OJ 100% FR CON PL 20/CS	PT	Case	20	\$	1.2064	\$	0.1200	\$	1.3264
56055	ARDMORE JC 100% APL	4FZ	Cbox	70	\$	0.2789	\$	0.0300	\$	0.3089
62900	OF JC APL PP 75/CS	4FZ	Case	75	\$	0.2789	\$	0.0300	\$	0.3089
60963	OF OJ PP 75/CS	4FZ	Case	75	\$	0.2706	\$	0.0300	\$	0.3006
50977	ARDMORE JC ORG PP	4FZ	Cbox	70	\$	0.3126	\$	0.0300	\$	0.3426
50978	ARDMORE JC APL PP	4FZ	Cbox	70	\$	0.3209	\$	0.0300	\$	0.3509
62557	ARDMORE JC TROP PNCH W CALM PP	4.23	Case	44	\$	0.2910	\$	0.0317	\$	0.3227
62555	ARDMORE JC APL W CALC PP	4.23	Case	44	\$	0.2910	\$	0.0317	\$	0.3227
62556	ARDMORE JC GRP W CALC PP	4.23	Case	44	\$	0.2910	\$	0.0317	\$	0.3227

PRICE GROUP: 1761 VALLEYVIEW / VANGUARD (REG 1)

					JUL.24	MOVE	AUG.24			
56612	OP OF OJ 100% FR CON PL 4/CS	PT	Case	20	\$	1.2428	\$	0.1200	\$	1.3628
56055	ARDMORE JC 100% APL	4FZ	Cbox	70	\$	0.2789	\$	0.0300	\$	0.3089
62900	OF JC APL PP 75/CS	4FZ	Case	75	\$	0.2789	\$	0.0300	\$	0.3089
60963	OF OJ PP 75/CS	4FZ	Case	75	\$	0.2706	\$	0.0300	\$	0.3006
50977	ARDMORE JC ORG PP	4FZ	Cbox	70	\$	0.3126	\$	0.0300	\$	0.3426
50978	ARDMORE JC APL PP	4FZ	Cbox	70	\$	0.3209	\$	0.0300	\$	0.3509
62557	ARDMORE JC TROP PNCH W CALM PP	4.23	Case	44	\$	0.2910	\$	0.0317	\$	0.3227
62555	ARDMORE JC APL W CALC PP	4.23	Case	44	\$	0.2910	\$	0.0317	\$	0.3227
62556	ARDMORE JC GRP W CALC PP	4.23	Case	44	\$	0.2910	\$	0.0317	\$	0.3227

REGION 1 - JUICE PRICING
EFFECTIVE: AUGUST 1, 2024

PRICE GROUP: 1762 LA JOYA ISD (REG 1)				JUL.24	MOVE	AUG.24
56055	ARDMORE JC 100% APL	4FZ	Cbox 70	\$ 0.2707	\$ 0.0300	\$ 0.3007
62900	OF JC APL PP 75/CS	4FZ	Case 75	\$ 0.2707	\$ 0.0300	\$ 0.3007
60963	OF OJ PP 75/CS	4FZ	Case 75	\$ 0.2683	\$ 0.0300	\$ 0.2983
50977	ARDMORE JC ORG PP	4FZ	Cbox 70	\$ 0.3103	\$ 0.0300	\$ 0.3403
50978	ARDMORE JC APL PP	4FZ	Cbox 70	\$ 0.3127	\$ 0.0300	\$ 0.3427
62557	ARDMORE JC TROP PNCH W CALM PP	4.23	Case 44	\$ 0.2828	\$ 0.0317	\$ 0.3145
62555	ARDMORE JC APL W CALC PP	4.23	Case 44	\$ 0.2828	\$ 0.0317	\$ 0.3145
62556	ARDMORE JC GRP W CALC PP	4.23	Case 44	\$ 0.2828	\$ 0.0317	\$ 0.3145