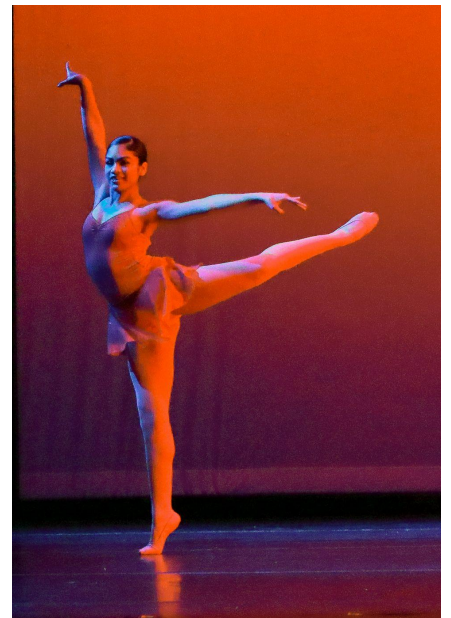
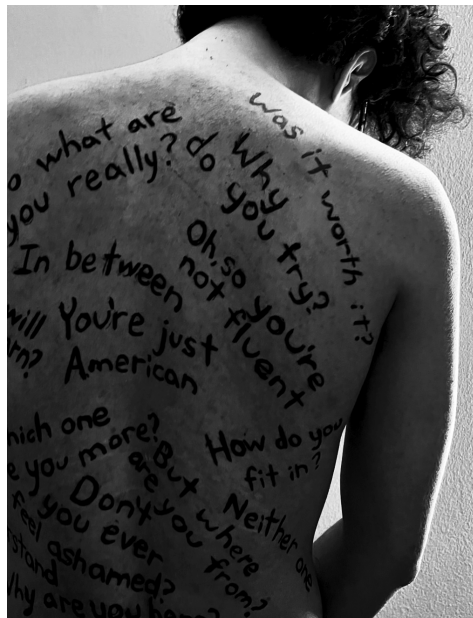




school of the arts

@ CENTRAL GWINNETT HIGH SCHOOL



Your Passion. Your Creativity. Your School.

School of the Arts @ Central Gwinnett High School offers a unique “arts-centric” learning experience for Gwinnett County high school students with a passion for the arts. Centrally located in Lawrenceville, SOTA is designed for students who want to take their art to the next level, working with industry professionals and partnering with arts organizations. This “school within a school” provides opportunities that students will not find anywhere else. Learn more...

About School of the Arts

School of the Arts @ Central Gwinnett High School (SOTA) provides a rigorous, college-preparatory curriculum that combines required academic coursework with expanded fine arts classes and arts-related internships and work experiences at a pre-professional and professional level.

SOTA Conservatory Program—The Conservatory is the signature program at SOTA. A non-traditional schedule, with online and blended courses for academic coursework, allows students to spend more of their school day in expanded arts classes, internships, and work experiences in the arts. SOTA offers the most fine arts courses in the district, and its faculty is made up of creative industry professionals. Areas of concentration include Art and Design, Dance, Music Technology and Audio Production, Theatre, and Voice.

Conservatory students will spend 20 hours per week in their arts program of study. Rising 9th graders from across the district may apply to be a part of the Conservatory. Admittance to the Conservatory will be determined through auditions, interviews, and juried presentations and performances.





SOTA Fellows Students— SOTA provides Central Gwinnett and transfer students with expanded elective course opportunities in art, dance, music, and theatre. SOTA Fellows students have a traditional core academic schedule while focusing their elective course work in the arts. While there is no admission criteria to be a SOTA Fellows student, this experience is designed for students with a strong interest in the arts. Students from around the district who are eligible for a permissive transfer and provide their own transportation can participate as a Fellows student (application only; no audition required).

About SOTA Students

A successful SOTA student has a passion for their content area, is self-motivated and self-disciplined, and is willing to participate in afterschool rehearsals and activities to create high-quality work/performances. SOTA students should enjoy working both individually and collaboratively.

Central Gwinnett students will have access to SOTA facilities, whether they want to take one fine arts course as an elective, pursue a fine arts pathway, take part as a Fellows student with expanded opportunities, or audition for the Conservatory.

Students from across the district who are eligible for a permissive transfer and who provide their own transportation may apply for both the SOTA Conservatory Program (audition/portfolio required) and SOTA Fellows (application only; no audition required).



About SOTA Facilities

SOTA is located at Central Gwinnett High School in Lawrenceville, just a mile from the county's only professional theatre and the brand new Lawrenceville Performing Arts Center. The building includes:

- A black box theatre for flexible staging and small-audience performances;
- New visual arts classrooms and computer art lab;
- New and expanded band, orchestra, chorus, music technology, and recording studio facilities;
- Dance studio space;
- Unique and specialized private lesson and studio space; and
- Expanded performance, rehearsal, and storage spaces.



About SOTA Faculty and Staff

SOTA teachers are industry professionals in their artistic field who are familiar with and know how to teach young artists. These teachers bring a wide variety of experiences to SOTA, including producing, directing, performing, creating, designing, and exhibiting their own work. Both full-time educators and adjunct fine arts experts lead classes, seminars, and other innovative instructional approaches to help build performance, business, technology, and communication skills needed for industry success. SOTA faculty and staff extend opportunities for its students through partnerships with semi-professional, professional, and postsecondary arts organizations and programs.

About SOTA Partners

Partnerships with the community and arts industry are key to SOTA's success. The City of Lawrenceville, where Central Gwinnett is located, is home to the award-winning Aurora Theatre and the city's new performing arts center, the Lawrenceville Arts Center. City leaders are committed partners with Gwinnett County Public Schools, providing financial support to build the new School of the Arts @ Central Gwinnett High School. Arts partnerships, arts-related internships, master classes with working professionals, and residencies will give Conservatory students the opportunity to learn from artists and performers in their artistic field. SOTA has support from a number of arts and arts education organizations, including Aurora Theatre, Atlanta Shakespeare Company, Kenny Leon's True Colors Theatre Company, LONA Foundation, Atlanta Opera, Georgia Gwinnett College, Savannah College of Art and Design (SCAD), Atlanta Institute of Music and Media, Kennesaw State University, Dance Canvas, The Hudgens Center for the Arts, and more.

About Careers in the Arts

The arts and entertainment industry is growing, with viable career options that provide pathways to a robust economic future for students. In fact, creative industries have a \$62.5-billion economic impact in Georgia, employing more than 200,000 people in careers in the arts and related fields. Theatre companies, arts programs, and film production are growing sectors in Gwinnett County, opening opportunities for GCPS to expand student-learning experiences in the arts.

About Arts Education in Gwinnett

Gwinnett County Public Schools has a proven commitment to funding the arts at a high level, resulting in a robust arts program throughout the district, with award-winning programs in the performing arts (music, theatre, dance), visual arts, and technology for the arts. Many of our students go on to postsecondary studies and careers in the arts.

For more information, email SOTA.Admissions@gcpsk12.org or visit our website at gcpsk12.org/SOTA.

