

*Gregory*

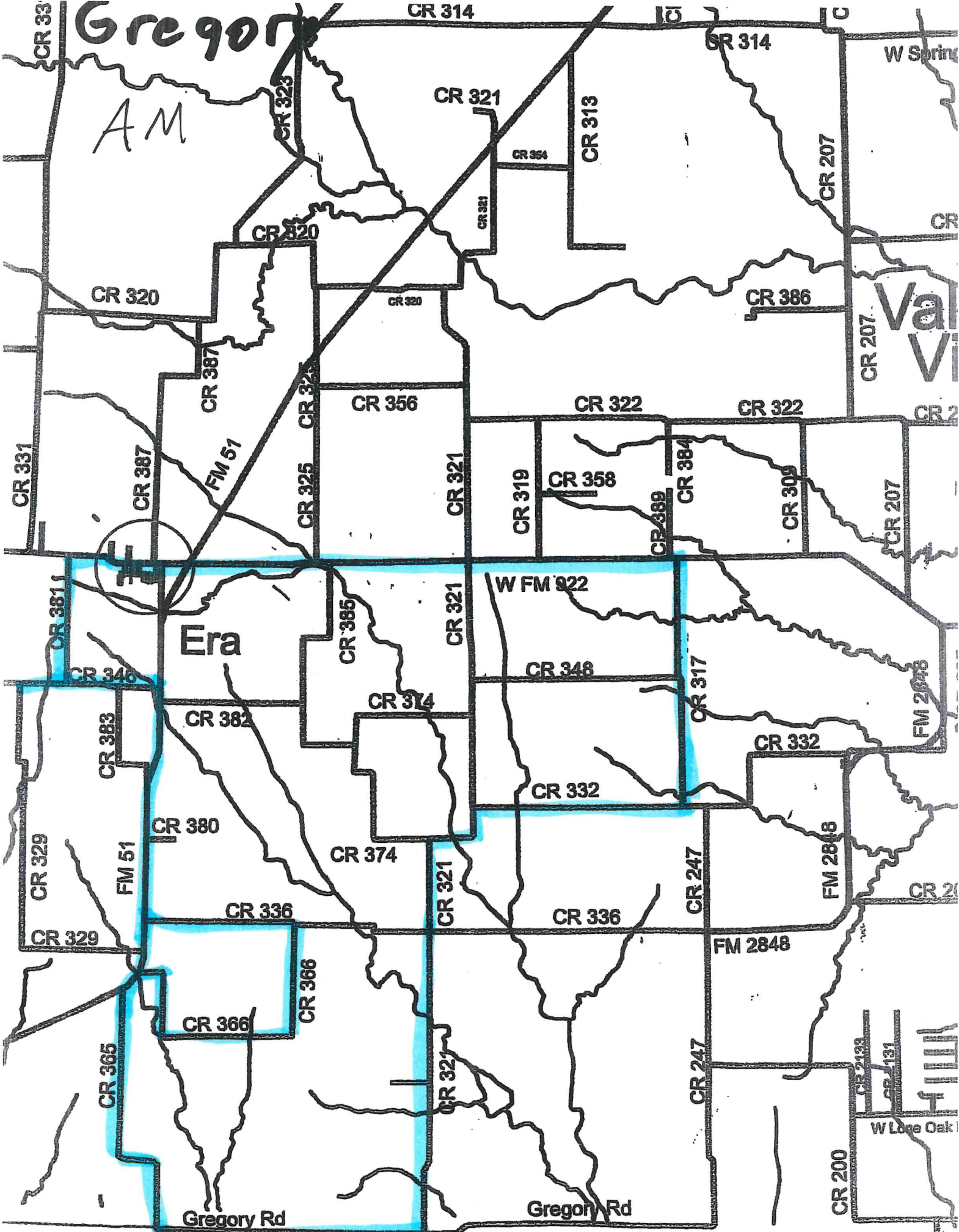
*AM*

**FF**

**Era**

**Va**  
**V**

**FW**



Gregory Rd

Gregory Rd

CR 200

W Lone Oak

W Spring

W FM 922

CR 314

CR 314

CR 322

CR 322

CR 320

CR 320

FM 51

CR 325

CR 356

CR 321

CR 319

CR 358

CR 389

CR 384

CR 309

CR 207

CR 387

CR 387

CR 325

CR 385

CR 321

CR 348

CR 317

FM 2848

CR 346

CR 382

CR 374

CR 332

CR 332

FM 2848

CR 20

CR 329

CR 383

CR 380

CR 374

CR 321

CR 336

CR 247

FM 2848

CR 329

CR 336

CR 365

CR 366

CR 366

CR 321

CR 247

CR 2133

CR 2131