



Celebrating Student Achievement: Edwin Markham Elementary School

August 13, 2024



Purpose

- Recognize **Edwin Markham Elementary School** students and staff for being recognized by the Washington School Recognition Program for 2022 - 2023 school year.

Recognition:

Growth for one or more student groups

Background

- What is the Washington School Recognition Program?
 - The State Board of Education (SBE), Office of the Superintendent of Public Schools (OSPI), and Educational Opportunity Gap Oversight and Accountability Committee (EOGOAC) collaborate to recognize the schools.

Background

How are schools identified?

- Based on the Washington School Improvement Framework (WSIF), schools are recognized for **Closing Gaps, Growth, Achievement** utilizing the following data:
 - Academic Achievement: ELA & Math proficiency
 - Other Academic Achievement: Student growth percentile
 - Graduation Rate: 4-year adjusted cohort
 - School Quality & Student Success (SQSS): regular attendance, ninth grade on track, dual credit
 - English Learner Progress: EL Progress – ELPA21 (2021) to WIDA (2022)

Background

How are schools identified?

- **Closing Gaps:** substantial improvements for the school or student groups
- **Growth:** All student groups or identified student groups are making the largest-to-year gains
- **Achievement:** highest achieving schools on English language arts and math proficiency, HS graduation rate, regular school attendance, 9th grade on-track, and dual credit completion

Recognition Matrix

Closing Gaps

Best improvement among schools receiving support

WSIF Change All Students

WSIF Change Student Groups

EL Progress Improvement

Grad Rate Improvement

Growth

School progress one year to the next or high student growth

All Students group

ELA Proficiency

Math Proficiency

ELA growth (SGP)

Math growth (SGP)

Grad rate (4-Year)

Extended Grad rate

Regular Attendance

Dual credit participation

9th graders on track

EL Progress

Disaggregated student groups

ELA Proficiency

Math Proficiency

ELA growth (SGP)

Math growth (SGP)

Grad rate (4-Year)

Extended Grad rate

Regular Attendance

Dual credit participation

9th graders on track

Achievement

*High performer in multiple measures
(3-Year Rollup)*

ELA proficiency

Math proficiency

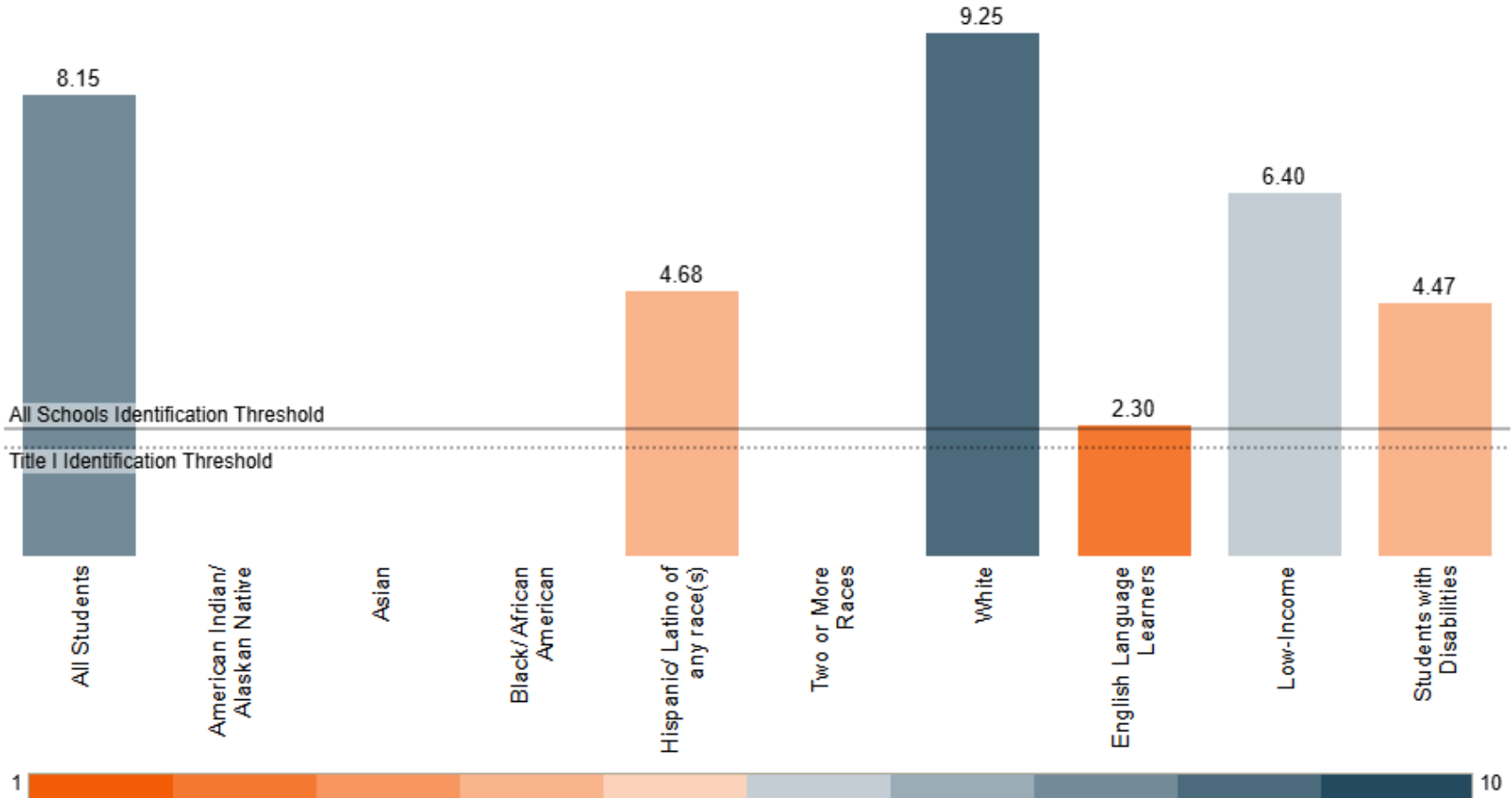
Graduation rate (4-Year)

Regular Attendance

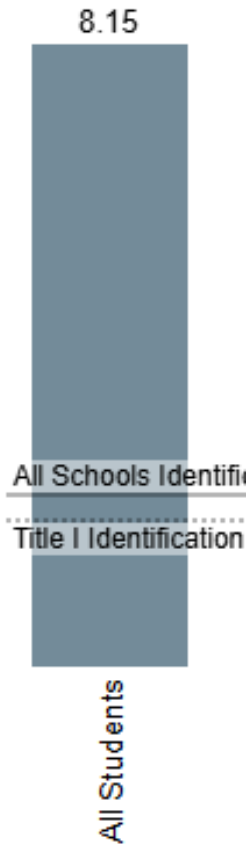
Dual credit

9th graders on track

Washington School Improvement Framework (WSIF): Markham Elementary School



Markham Elementary School: WSIF Scale 1-10



WSIF Year: 2023

Student Group: All Students

Composite Final Score: 8.15

Made up of the following indicator scores:

Proficiency Combined Score: 7.5

- ELA Proficiency Score: 7.0
- Math Proficiency Score: 8.0

Other Academic Achievement: 9.0

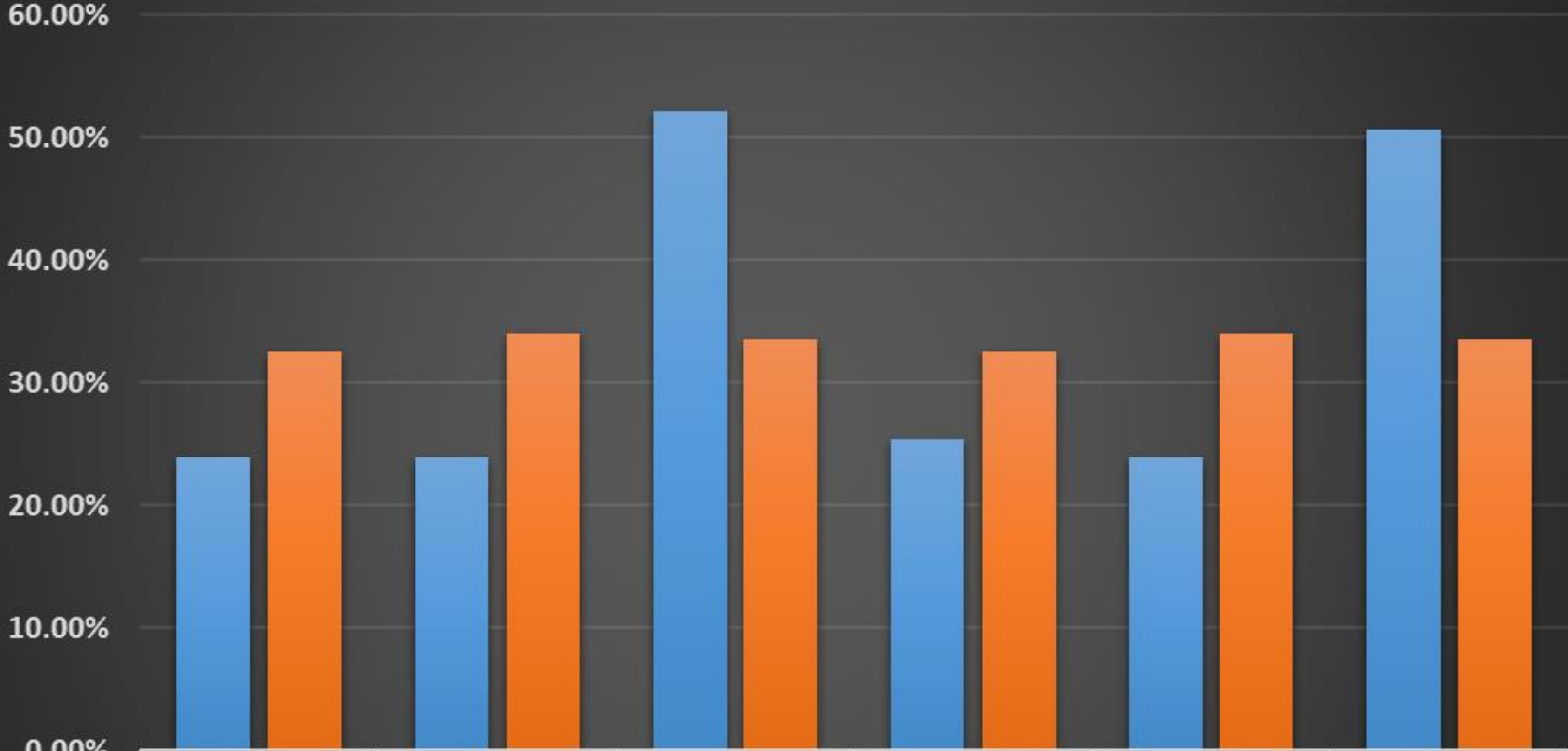
- **Growth ELA Score: 10.0**
- **Growth Math Score: 8.0**

English Learner Progress Score: 9

School Quality and School Success Combined Score: 4.0

- Regular Attendance: 4.0

2022 - 2023 Student Growth Comparason



	ELA Low Growth	ELA Typical Growth	ELA High Growth	Math Low Growth	Math Typical Growth	Math High Growth
■ Markham	23.90%	23.90%	52.20%	25.40%	23.90%	50.70%
■ WA State	32.50%	34%	33.50%	32.50%	34.00%	33.50%

How Did They Get Here?

Instruction: High Expectations – High Support

- Core curriculum utilized by all teachers
- Rigorous teaching with support
- Targeted intervention block that all staff participated in (teachers, paras, specialists)
- Schoolwide strategies for math (CUBES, math vocabulary notebooks, Dreambox math competition)
- Intentional goal setting and progress monitoring with students

How Did They Get Here?

Culture: Belief in Students

- Instilling and modeling the love of learning and school pride for all students
- Building on long standing traditions
- Positive student recognition celebrations for success in learning
- Strong parent and community partnerships
- Collective commitment of staff

Celebrating PSD Superstars



Celebrando a las Superestrellas del PSD