

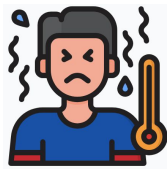
Catasauqua Middle School 2024-2025

Health & Safety Protocols



- Handwashing and respiratory etiquette
- Routine cleaning, disinfecting, sanitizing, and maintaining healthy facilities
- [CASD Health & Safety Plan](#)

Nurse's Office



- Stay home if unwell and go home if feeling unwell while at school
- Contact tracing in combination with isolation and quarantine
- When a child is sick, the child should not report to school.
- Parents/guardians should contact the school nurse and their healthcare provider to discuss COVID-19 symptoms and possible quarantine and/or isolation.
- Check with teachers to stay on top of classwork and assignment when sent home from school.

Click below to access the CMS Building Handbook

[2024-25 CMS Parent/Student Handbook](#)



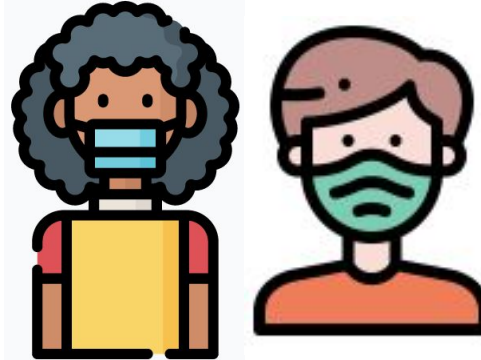
Attendance

- Regular attendance is essential to success in school.
- Children lose opportunities to learn when they miss school.
- Excessive absenteeism generally results in decreased academic achievement.
- Check with teachers to stay on top of classwork and assignment when absent from school.

Meals

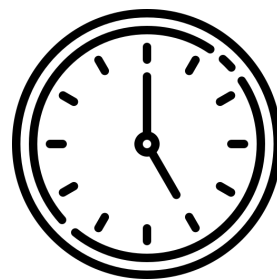
- All students will be eligible for Free breakfast and lunch.
- **Breakfast** - Served upon student arrival to grade levels.
- **Lunches** - See daily schedule block for lunch times.

Masking



- Face coverings/masks will be optional for all students and staff in buildings and on school vehicles (buses, vans, etc.). State orders and/or local data may result in modifications to the District's face covering practices.

Daily Schedule



Daily Schedule

[CMS Bell Schedule 2024/25](#)

- 7:45 AM** Main doors open for all students
- 7:52 AM** Homeroom begins
- 2:20 PM** Student Dismissal

All schedules are based on a five-day cycle.

Teaching and Learning



- [2024-2025 iPad User Agreement](#)
- All students will be provided with a district owned iPad K-12
- Students in grades K-8 will use [Google Classroom](#) as their learning management system
- Students in grades 9-12 will use [Canvas](#) as their learning management system
- The district will assess students' academic needs through the use of high-quality screeners for students in grades K-4 and high-quality ELA and math diagnostics in grades K through high school. The school district will utilize technology tools to create personalized learning pathways for students.

Student Supply Lists

[2024-2025 School Supplies](#)

Transportation



- Transportation Dept. Contact Info: Phone: 610-264-3192; extension 2
Email: transportation@cattysd.org
- You may view your child's bus information by logging into PowerSchool - look for Bus Information after Aug. 19, 2024.

Communication



- [PowerSchool Parent Portal](#) - Access teacher assignments, student schedules, and report cards



- Sign up for [Get the Remind app](#) - Text Messaging Tool used by CASD teachers and administration

*Please call the Main Office if you need assistance setting up your PowerSchool or Remind account - 610-264-4341.

Arrival & Dismissal

Click on the following links to view the Map for specific traffic patterns for our CMS Arrival and Dismissal Procedures

[CMS Arrival Map](#)

Homeroom is from 7:52 AM - 8:07 AM. Once students enter their designated entrance door, see below, students report directly to their homeroom on the first day of school.

- **Bus Students:** Students will enter the doors by the 7th Grade Wing and pick up a breakfast on the way to homeroom.
- **5th Grade:** enter through the main doors and pick up a breakfast on the way to homeroom.
- **6th Grade:** enter through side cafeteria doors and pick up a breakfast on the way to homeroom.
- **7th Grade:** enter through the exterior doors near the bridge and pick up a breakfast on the way to homeroom.
- **8th Grade:** enter through the doors located by the memory garden and pick up a breakfast on the way to homeroom.

[CMS Dismissal Map](#)

All students will exit through the main entrance of the Middle School and proceed off campus. We will operate on two staggered dismissal times. The dismissal times are as follows:

- 2:15 PM** - Dismissal for BUS Students
- 2:20 PM** - Dismissal for All Walkers & Parent Pick-up