



Roseville Area Schools Community Education

YOUTH ENRICHMENT

Central Park | September 2024 - January 2025

Field trips, STEM, art, language, sports, adventure, games, cooking, theater, and more for ages 0 to 14!



Register Today!

- Call 651-604-3770
- Visit isd623.ce.eleyo.com
- Scan this QR code!



WELCOME!



We offer engaging programming for ages 0 to 14 throughout the entire year - before school, after school, on non-school days, and during the summer. These experiences help your child expand their education, make friends, stay active, and explore new interests!

Follow us on social media for fun updates throughout the year:



Instagram Username:
[@Roseville_CommunityEd](https://www.instagram.com/Roseville_CommunityEd)



Facebook URL: [facebook.com/CommunityEd](https://www.facebook.com/CommunityEd)
Roseville Area Schools Community Education

FAQS

SCHOLARSHIPS ARE AVAILABLE!

Every student should be able to participate in enrichment classes! To receive financial assistance, the student must live in the district or attend Roseville Area Schools. Call 651-604-3770 to learn more.

OPPORTUNITIES WITH ★ INCLUDED IN FRIENDSHIP

Opportunities in this catalog that are marked with a star are included with Friendship Connection registration, if your student is registered for that Friendship Connection site during all days of the camp.

CONFIRMATION

If you register online, you will receive an email confirmation. Please verify the class dates and any special instructions in that email. If a class is cancelled, you will receive an email or phone call to notify you.

CANCELLATIONS & REFUNDS

Refunds can only be issued if requested 1 week prior to the start of a class. Refunds are not issued after a class has begun. There is a \$5 service charge on participant-initiated cancellations. If a class does not get the minimum enrollment needed, we may cancel the class, and you will receive a full refund.

ACCESSIBILITY & ACCOMMODATIONS

We welcome all children and are committed to creating inclusive experiences! Please contact us at 651-604-3770 if there are accommodations that your child may need.

REGISTER TODAY!



isd623.ce.eleyo.com



651-604-3770



1910 County Road B W, Roseville



Or scan this QR code!



We are open Monday - Friday from 7:30am - 4:00pm!

SEPTEMBER

THE COMPETITION IS ON!

VIRTUAL COMPETITION CHESS CLUB

Instructor: CSGA Enrichment

This program is for players who are interested in participating and competing in tournament chess, or who want their chess ability to improve to the next tactical level! Meet online for chess instruction and fun competitive play. Expert coaching will be provided for participants at tournaments. Perfect for students who want extra challenges beyond their school clubs, or who have scheduling conflicts with our other chess clubs!

Saturdays, Sep 21 - Dec 14 | 8:00 - 9:30am | Grades 1 - 12
986-Chess | Location: Online | \$75

OCTOBER

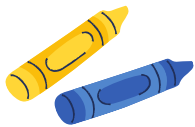
WHAT WILL YOU CREATE?

DRAWING PALOOZA WITH YOUNG REMBRANDTS

Instructor: Young Rembrandts

Got a little artist at home turning every corner into their personal gallery? Watch in awe as their pencils whirl across the paper, drawing everything from yummy taffy apples to charming seasonal scarecrows, and bunnies full of sass. We are even sprinkling a bit of Van Gogh magic with some vibrant sunflower sketches. Embark on an artistic adventure filled with colors and imagination they'll adore.

Tuesdays, October 1 - 29 | 3:30-4:30pm | Grades K - 6
123-CP | Location: Central Park | \$69



ELEMENTARY CODING & STEM CLUB WITH CSGA

Instructor: CSGA Enrichment

This program offers a crash course in coding your own games on Scratch! Students will create and develop 3-4 basic games while learning many foundational computer science skills with boundless potential for creativity and expansion. Apply your Scratch coding skills to robotics or continue creating games. Test your robots by solving specific challenge problems generated during the program!

Wednesdays, October 2 - January 29 | 3:20-4:30pm | Grades 1 - 6
409-CP | Location: Central Park | \$210

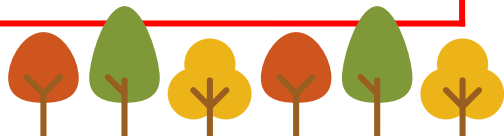


GET OUTDOORS!

NATURE TRAILS AND TALKS ★

If you like nature, join us around the trail around our school! We will have time to discuss what we see and the beauty of trails along the way.

Friday, October 4 | 7:30-9:00am | Grades K - 6
915-CP | Location: Central Park | \$5



Visit isd623.ce.eleyo.com to register!

OCTOBER

CHECKMATE!



ELEMENTARY CHESS CLUB WITH CSGA

Instructor: CSGA Enrichment

Whether you consider yourself a beginner or intermediate player, join this club to meet and interact with other chess players in your school and play on a weekly basis. If they are new to the game, players will learn the basic rules and strategies of chess. Tournament play is encouraged outside of the club, but not required.

Mondays, October 7 - January 27 | 8:00 - 8:50am | Grades 1 - 6
408-CP | Location: Central Park | \$119

CLAY CREATIONS ★

Let's play in the clay! We will brainstorm some fun things to build with clay from pinch pots to buildings to sculptures! You will get to take home and display your creations!

Monday - Thursday, October 7 - 10 | 7:00 - 9:00am | Grades K - 6
916-CP | Location: Central Park | \$39

SOCCER TYKES WITH DASH SPORTS

Instructor: DASH Sports

This camp provides players with an introductory experience to the game of soccer! Dribbling, passing, and shooting will be taught and practiced. Fun, skill-based games will be played to practice newly learned skills. Athletes should bring a water bottle (spikes and shin guards optional). Soccer balls are provided. Parent participation is recommended when needed.

Mondays, October 7 - 28 | 4:30 - 5:00pm | Ages 3 - 6
876-ATEC | Location: Anpétu Téča Education Center | \$75



POKÉ PALOOZA WITH KIDCREATE STUDIOS

Instructor: Kidcreate Studios

Experience the ultimate Pokémon-inspired art camp! Unleash your creativity in a supportive and exciting environment. Our skilled instructors will guide you as you dive into the magical world of Pokémon, creating iconic characters like Jigglypuff and Magikarp. Each day will be filled with sketching, painting, and sculpting as you embark on a vibrant exploration of artistic expression.

Wednesdays, October 9 - November 6 | 3:45 - 4:45pm | Grades K - 6
128-CP | Location: Central Park | \$89



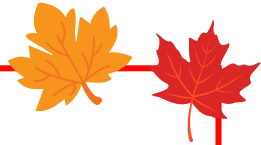
OCTOBER

FELT FAIRYLAND CAMP ★

Welcome to felt fairyland camp! We will create our very own fairy characters using felt and a little fairy dust! Once our story is written, we will use our imaginations and act out our very own fairyland stories.

Monday - Thursday, October 21 - 24 | 7:00 - 9:00am | Grades K - 6
912-CP | Location: Central Park | \$35

MEA BREAK!



FALL FUN DAY ★

Join us for a day of fall-themed activities including crafts, games, and food projects! The day will be filled with pumpkins, apples, and leaves to celebrate the season.

Wednesday, October 16 | 9:00am - 3:30pm | Grades K - 6
901-BH | Location: Falcon Heights | \$35

FALL CELEBRATION + PINE HAVEN FIELD TRIP ★

Come celebrate fall with us! We will be doing fall-themed activities all day, including a field trip to Pine Haven! There will be endless apples to choose from and many activities such as the hay ride, petting zoo and pumpkin patch.

Thursday, October 17 | 9:00am - 4:00pm | Grades K - 8
961-PV | Location: Parkview + Field Trip | \$39

DRAWING BABY ANIMALS WITH YOUNG REMBRANDTS

Instructor: Young Rembrandts

Embark on an enchanting journey through the world of baby animals. Begin with the heartwarming realism of nature's young, from the gentle gaze of a fawn to playful otters. Transition into the whimsical Kawaii style, capturing wide-eyed creatures. Add a twist as we imagine baby animals donning fashionable attire, blending humor with creativity. Dive into legends with mythical baby creatures, merging mystery with art.

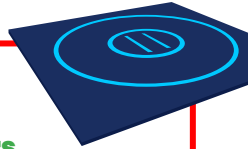
Thursday - Friday, October 17 - 18 | 9:00am - 12:00pm | Grades K - 6
815-ATEC | Location: Anpétu Téca Education Center | \$109



Visit isd623.ce.eleyo.com to register!

NOVEMBER

GET STARTED!



ROSEVILLE RAIDER YOUTH WRESTLING CLUB

Instructor: Roseville Wrestling Coaches + Wrestlers

The sport of wrestling offers opportunities for fun, play, hard work, technique, and competition! This club is an introduction to basic wrestling that any child, of any experience level, is invited to join! It is NOT a hard core program that competes with other clubs. Our motto is 100% FUN. Each student will receive a t-shirt and end-of-year pizza party!

Mondays & Wednesdays, Nov 6 - Dec 11 | 6:00 - 7:15pm | Grades 2 - 6
999-RAHS | Location: Roseville Area High School | \$75

LIKE TO MOVE AND GROOVE?



JUNIOR RAIDERS DANCE TEAM

Instructor: Brittany Rehling, Roseville Dance Team Coach

This camp is a fun, low-commitment opportunity for students to be introduced to the sport of dance and prepare for the 7-12th grade dance team! Our routines are fun and choreographed with all experience levels and an academic environment in mind. Students can join with or without dance experience. No tryout necessary, all who join will be a member of the Junior Raiders Dance Team! This group will perform at the Roseville Dance Team's winter show on Saturday, January 18th and will get a free t-shirt to wear!

Mon, Nov 6 - Jan 27 & Wed, Dec 4 | 6:30 - 7:30pm | Grades 3 - 6
139-1 | Location: Roseville Area Middle School
\$195 (or \$98 for January only)



DRAWING HUB WITH FRIENDS! ★

Ice Cream Cones to Sonic the Hedgehog! Learn to draw everything you can imagine. YouTube drawing hub friends will direct us in drawing cool things!

Friday, November 8 | 7:30 - 9:00am | Grades K - 6
917-CP | Location: Central Park | \$5



SHRINKY DINK DESIGNS ★

This week, we will learn how to create designs with shrinky dinks using personal photos and character pictures. We'll draw or trace images on the shrinky dinks, then color, bake and shrink!

Monday - Thursday, November 11 - 14 | 7:00 - 9:00am | Grades K - 6
918-CP | Location: Central Park | \$35

NOVEMBER

MAGICAL INK & MORE!

SCIENCE MAGIC WITH KIDSCIENTIFIC

Instructor: KidScientific

Unleash your inner wizard at this magical science camp! Experience the thrill of defying gravity with your very own hovercraft, amaze your friends with secret messages written in magical ink, and create wands that light up with enchantment. Unravel the scientific secrets behind each spellbinding phenomenon!

Wednesdays, Nov 13 - Dec 18 | 3:45-4:45pm | Grades K - 6
128-CP2 | Location: Central Park | \$155



SCENT-SATIONS ★

Do you like essential oils or to just relax from a scent when you walk into a room? Learn what smells make you feel calm and which bring you excitement. We will make scented candles and soaps to fill your rooms with good smells!

Monday - Thursday, November 18 - 21 | 7:00 - 9:00am | Grades K - 6
919-CP | Location: Central Park | \$39



ANIMAL CARTOONS WITH YOUNG REMBRANDTS ★

Instructor: Young Rembrandts

If your child is a fan of cuddly animals and funny cartoons, this drawing workshop is especially tailored for their needs. Over the course of five days, our students will learn how to draw animals of all shapes, sizes, and colors. They will learn how to personify ordinary animals, transforming them into fully realized cartoon characters. Be a part of something fun and special!

Tuesdays, Nov 19 - Dec 10 | 3:30 - 4:30pm | Grades K - 6
123-CP1 | Location: Central Park | \$69



Visit isd623.ce.eleyo.com to register!

DECEMBER

DECEMBER DESSERTS ★

Warm up with homemade hot chocolate! Let's make a variety of savory and sweet treats to bring home and share with your family on these cold days!

Friday, December 6 | 7:30 - 9:00am | Grades K - 6

923-CP | Location: Central Park | \$15



DECEMBER DECODED ★

It's December and cold, but we are going to have fun! Can winter slime last in the snow? How long does it take to melt a snow ball? Can do icicles form? Join us and find out!

Monday - Thursday, December 9 - 12 | 7:30 - 9:00am | Grades K - 6

922-CP | Location: Central Park | \$29

WINTER WONDERLAND ★

Do you love winter? This week we will do craft projects to get you into the winter mood! DIY painting and winter-themed pillows, come join the fun!

Monday - Thursday, December 16 - 19 | 7:30 - 9:00am | Grades K - 6

921-CP | Location: Central Park | \$35



WINTER BREAK!

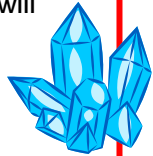


CAVES & CRYSTALS - SCIENCE MUSEUM FIELD TRIP ★

Dive in and join us in learning about geology through caves and crystals! Join us on a field trip to The Science Museum where we will go to the Omnitheater for a show on Ancient Caves.

Friday, December 27 | 10:00am - 2:00pm | Grades K - 6

932-EDG | Location: Edgerton + Field Trip | \$35



UNDER THE SEA DAY - FIELD TRIP TO SEAQUEST ★

Adventure into the deep blue and see some crazy creatures! Learn and craft your way through the wonderful world of water and join us on a field trip to SeaQuest Roseville.

Monday, December 30 | 9:00am - 4:00pm | Grades K - 8

946-EDWPV | Location: Parkview + Field Trip | \$39



MAGIC SHOW! WITH NORM BARNHART ★

Magic Show! Norm is a wonderful entertainer and educator. His shows are non-stop fun. We will celebrate the New Year with wild and wacky comedy and magic. He will even teach us a few of his tricks!

Tuesday, December 31 | 9:45 - 11:15am | Grades K - 6

908-BHFH | Location: Falcon Heights + Field Trip | \$15

JANUARY



BLANKET BUILDERS CLUB ★

Join us for creative blanket making! We will give our blankets to someone special in our community as an act of service and kindness and to show appreciation to them.

Monday - Thursday, January 6 - 9 | 7:00 - 9:00am | Grades K - 6
920-CP | Location: Central Park | \$35

PERLER BEAD PALOOZA ★

Do you love to do art and like to make detailed creations?! Join us for perler bead palooza and create 3-D perler beads with characters and castles.

Monday - Thursday, January 13 - 16 | 7:00 - 9:00am | Grades K - 6
913-CP | Location: Central Park | \$39

FREE ACTIVITY!

CARDS FOR THE COMMUNITY ★

Brighten someone's day by making them a surprise card! We will learn how to make cards and give them out to our community at Central Park and beyond!

Friday, January 24 | 7:00 - 9:00am | Grades K - 6
914-CP | Location: Central Park | **FREE!**



MARK YOUR CALENDAR!

December 19, 2024

Registration begins for winter/spring 2025 Youth Enrichment. We'll be offering camps and field trips from February - May!

February 3, 2025

Registration begins for summer 2025 Youth Enrichment!

February 24, 2025

Registration begins for Friendship Connection 2025-2026. We provide school-age care before and after school, on non-school days, and during summer break! Call 651-604-3505 or visit isd623.org/Friendship to learn more.

Order Apparel

to Support Roseville Community Education!

Choose from this selection of limited edition shirts! Your purchase will support Roseville Area Schools Community Education programs and services. These shirts are a soft, comfortable tri-blend fabric (50/37/13 poly/cotton/rayon) in a unisex fit. Sizes are available in adult S - 3XL and youth S - XL.

To order, scan this QR code or visit isd623.ce.eleyo.com. All orders are due by October 4, 2024. Shirts will arrive near the end of October!



HAVE YOUR CHILD'S BIRTHDAY PARTY IN OUR GYMNASIUM!

Take the stress out of planning, cleaning, and preparing for a party at your home. Come party at Anpétu Téca Education Center!

Along with exclusive access to our full gymnasium, your child's party will also have a private room for gifts and cake! You'll also have a choice of basketballs, dodgeballs, soccer balls, or hula hoops and jump ropes to play with.

We're located at 1910 County Road B West, Roseville. Party packages start at \$200 for 3 hours. Come check it out!



To get started and check availability,
call 651-604-3770 or scan this QR code!

FAMILY FALL FEST

Join Roseville Community Education for an afternoon of fall-themed crafts and activities with your family!

SATURDAY, NOVEMBER 16

12:00 - 4:00 PM

Anpétu Téča Education Center
1910 County Road B W, Roseville



This is a FREE event, but you must register your family in advance to attend. Space is limited. Scan this QR code or visit isd623.ce.eleyo.com to sign up!

Family **LEGO** Night

December 9, 2024

Save the Date!

Registration information will be posted at isd623.ce.eleyo.com once it becomes available.