

The background is a light cream color, decorated with various school supplies scattered around the central text. These include several orange pencils with pink erasers and green bands, blue laptops, yellow and pink spiral notebooks, blue pencil cases, green pencil sharpeners, and blue erasers. Some items are accompanied by small green star-shaped confetti.

WELCOME TO REAGAN!

Welcome Back Students & Parents!



OUR MISSION

The Elementary Magnet School at Reagan is committed to the belief that each student will develop to his or her potential within a positive learning community. Our students will demonstrate exemplary personal character, social responsibility, and intellectual, emotional, and physical excellence.



SCHOOL DROP-OFF

Car Lanes:
We have two car lanes in the front of the building where students can be safely and quickly dropped off.

Parent walk up:
Parents may walk their child to the building by using the crosswalk.

Pre-K parents may use the side gate located in the front of the building to go directly to the outside door of the school where their child will enter.

Parents may not enter the building or stand at the front doors unless approved by the administration.

Arrival Procedures for students:
All students should enter through the front door with the exception of our Pre-K.



***Pre-K parents must walk their child off at the end of A Wing.**

SCHOOL PICK-UP

Pick Up:

Pre-K

Pick up through the gate in front of the building and wait at end of their wing.
Siblings of Pre-K may also be picked up here as well.

Students have three choices for dismissal: walk home out the back gate, parents walk up at the end of each wing or parents pick up in line out front. Parents stay in their cars and wait for students to come to them down the center line.

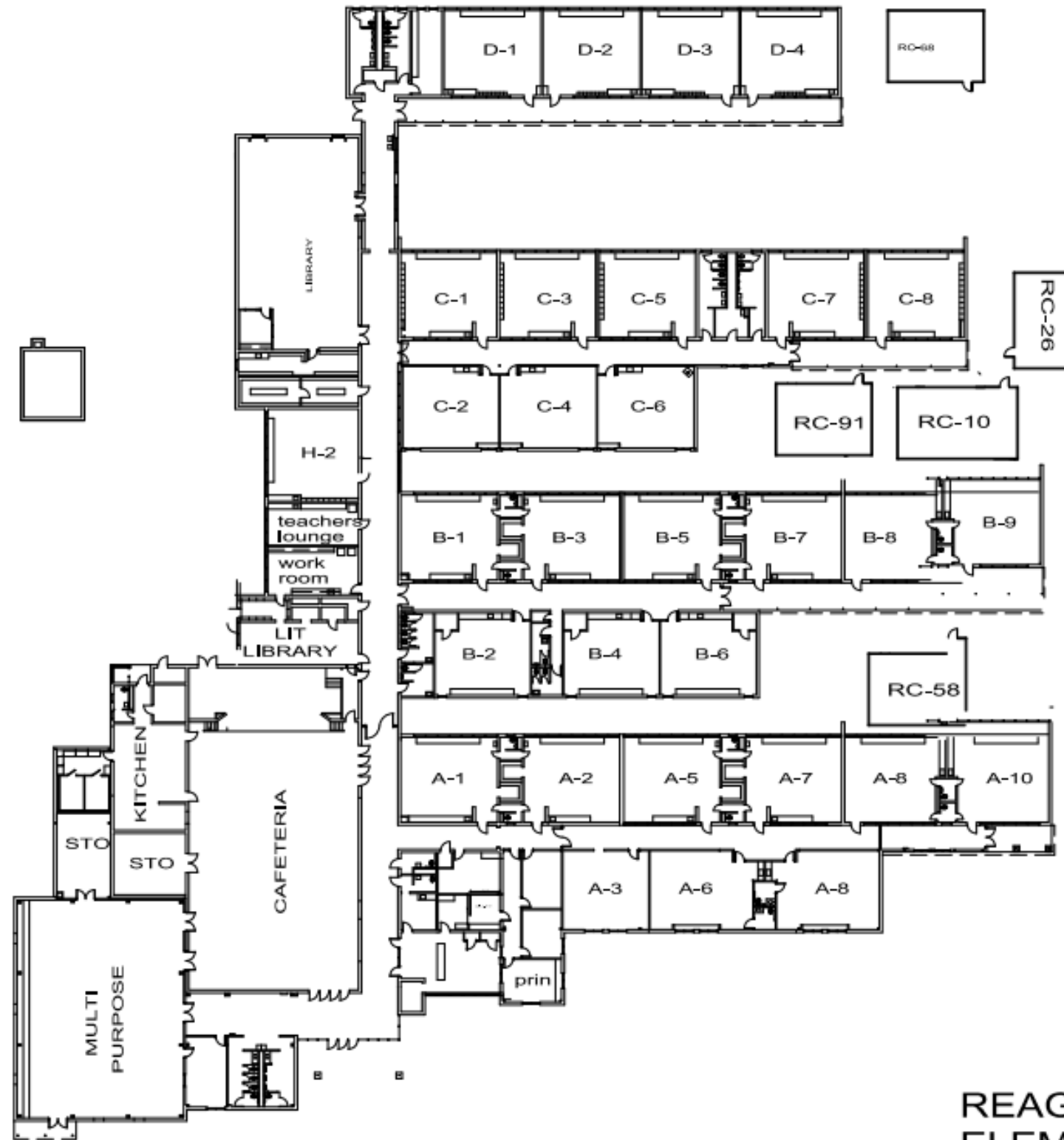


***Pre-K parents must pick up their child at the end of A Wing.**

CLASSROOM LOCATIONS



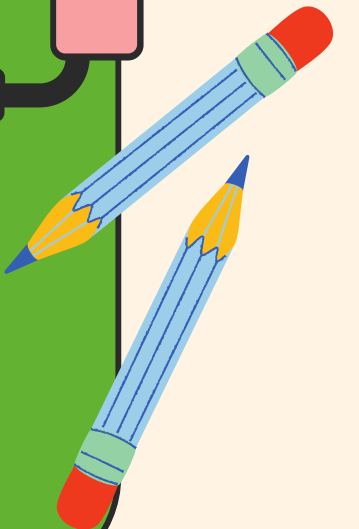
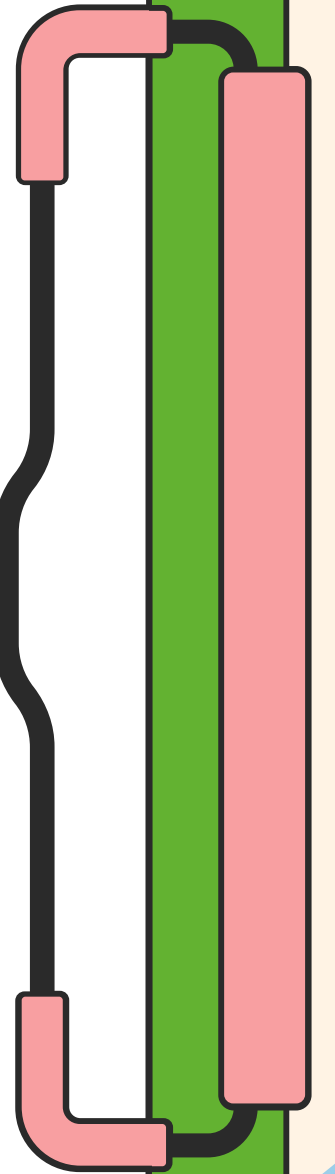
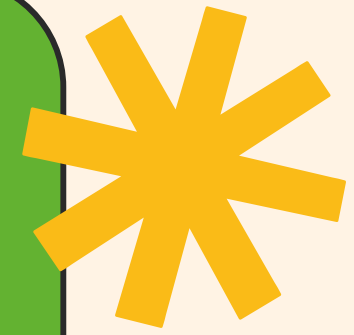
TOTAL SQ. FT. 64,234'
Updated 10/2017



ECISD DISTRICT OPERATIONS

FLOOR PLAN

REAGAN
ELEMENTARY
SCHOOL



EXPECTATIONS

- Maintain 80% average in all subjects.
- Must have 90% attendance
- Complete homework nightly (except PTA or scheduled nightly events)
- Be on time (Tardy bell is 7:40 - must be inside cafeteria and ready for announcements)
- Limit leave-earlies (must pick up before 2:45)
- Free lunch is provided daily



PARENT LUNCHES



- Monday- Kindergarten - 11:00 - 11:20 &
5th Grade 11:30 - 11:50
 - Tuesday - 1st Grade - 11:25 - 11:45
 - Wednesday - 2nd Grade - 11:10 - 11:30
 - Thursday - 3rd Grade - 11:40 - 12:00
 - Friday - 4th Grade - 11:50 - 12:10 &
Pre-K - 10:45- 11:05
- 
- 



CONTACT INFORMATION

Reagan Magnet Elementary

2321 E. 21st St.

Odessa, Tx 79761

Phone: 432-456-1189

Principal:

jennifer.bizzell@ectorcountysd.org

Assistant Principal:

jessica.berridge@ectorcountysd.org

PARENT HANDBOOK



The background is a light cream color, decorated with various school supplies scattered around the central text. These include several orange pencils with pink erasers and green bands, blue laptops, yellow and pink spiral notebooks, blue pencil cases, green pencil sharpeners, and blue erasers with the word 'ERASER' printed on them. Small green paper flowers are also scattered throughout.

THANK YOU!

We are looking forward to a great school year!